



Introducing the Texas Cancer Registry

Melanie Williams, Ph.D.
Director, Cancer Epidemiology and Surveillance Branch
Texas Department of State Health Services

Presentation Acknowledgments



Federal Funding

We acknowledge support from the following federal agencies.

- The Centers for Disease Control and Prevention provides financial support under Cooperative Agreement #1NU58DP006308. The contents of this presentation are solely the responsibility of the authors and do not necessarily represent the official views of the CDC or US Department of Health and Human Services.
- The National Cancer Institute's Surveillance, Epidemiology and End Results Program provides financial support under Contract #75N91021D00011.

State Agency Funding

We acknowledge support from the following Texas state agencies.

- Texas Department of State Health Services
- Cancer Prevention and Research Institute of Texas

Additional Acknowledgments

The TCR also thanks all cancer reporters for their hard work and collaboration. Cancer reporters help us meet national high quality and timeliness standards and enable us to serve as the primary source of cancer data in Texas.



Howdy Y'all!



Texas Overview



- Texas is the largest (by area) of the 48 contiguous states of the US, and the second largest overall, behind Alaska. Texas is about twice the size of Germany and larger than any other country in western Europe.
- Texas is the second most populous after California with an estimated population of 29 million. This is 1/12 of total U.S. population.
- Texas has 254 counties and only 40 counties have 100,000 people or more.
- Six Texas counties have a population over 1,000,000 people — Harris, Dallas, Tarrant, Bexar, Travis and Collin. About 47% of Texans live in one of these counties.



Texas Overview



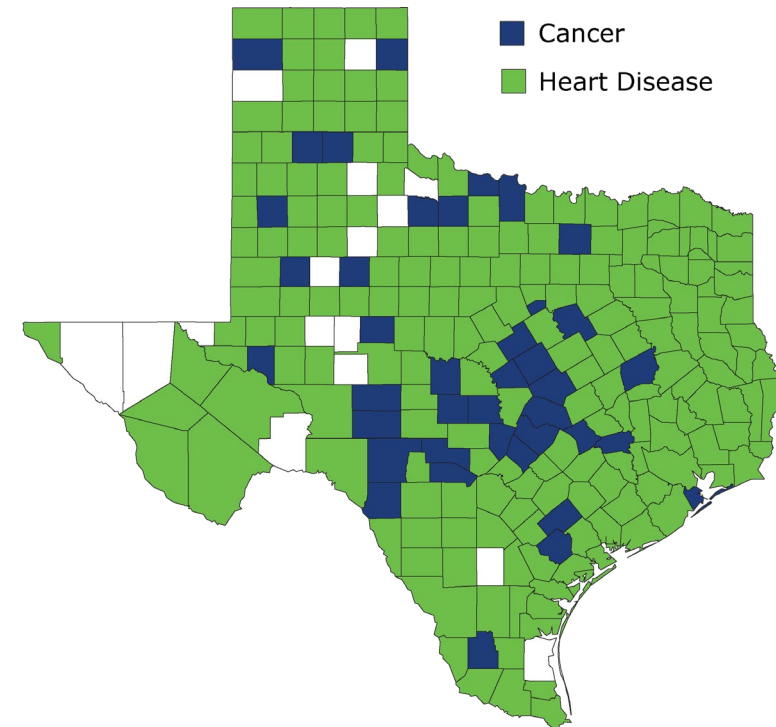
- Texas has 3 of the 10 largest cities in the US, as well as the largest rural population (over 3.8 million).
- Texas counties range in population from Loving, the 2nd smallest county population in the US with 169 people to Harris County, the 3rd largest county in the US with over 4.7 million.
- 32 counties along the Texas-Mexico border are designated as “border counties” and differ from non-border counties in some key demographic areas.
- Texas is diverse, with no ethnic majority.
- Texas has the second largest Hispanic population and the third largest Asian and Black populations.

Cancer in Texas: A Significant Public Health Issue



- In 2021, an estimated 131,610 new Texas cancer cases will be diagnosed, and an estimated 46,353 Texans will die from cancer.
- Overall, cancer is the 2nd leading cause of death, but is 1st in 40 Texas counties.¹
- The cost of cancer in Texas for 2020 is estimated to be over \$44.7 billion.²

Leading Cause of Death by County, 2015–2019



¹ Centers for Disease Control and Prevention, National Center for Health Statistics. Underlying Cause of Death 1999-2019 on CDC WONDER Online Database, released in 2020.

² An Economic Assessment of the Cost of Cancer in Texas and the Benefits of the Cancer Prevention and Research Institute of Texas (CPRIT) and its Programs: 2020 Update

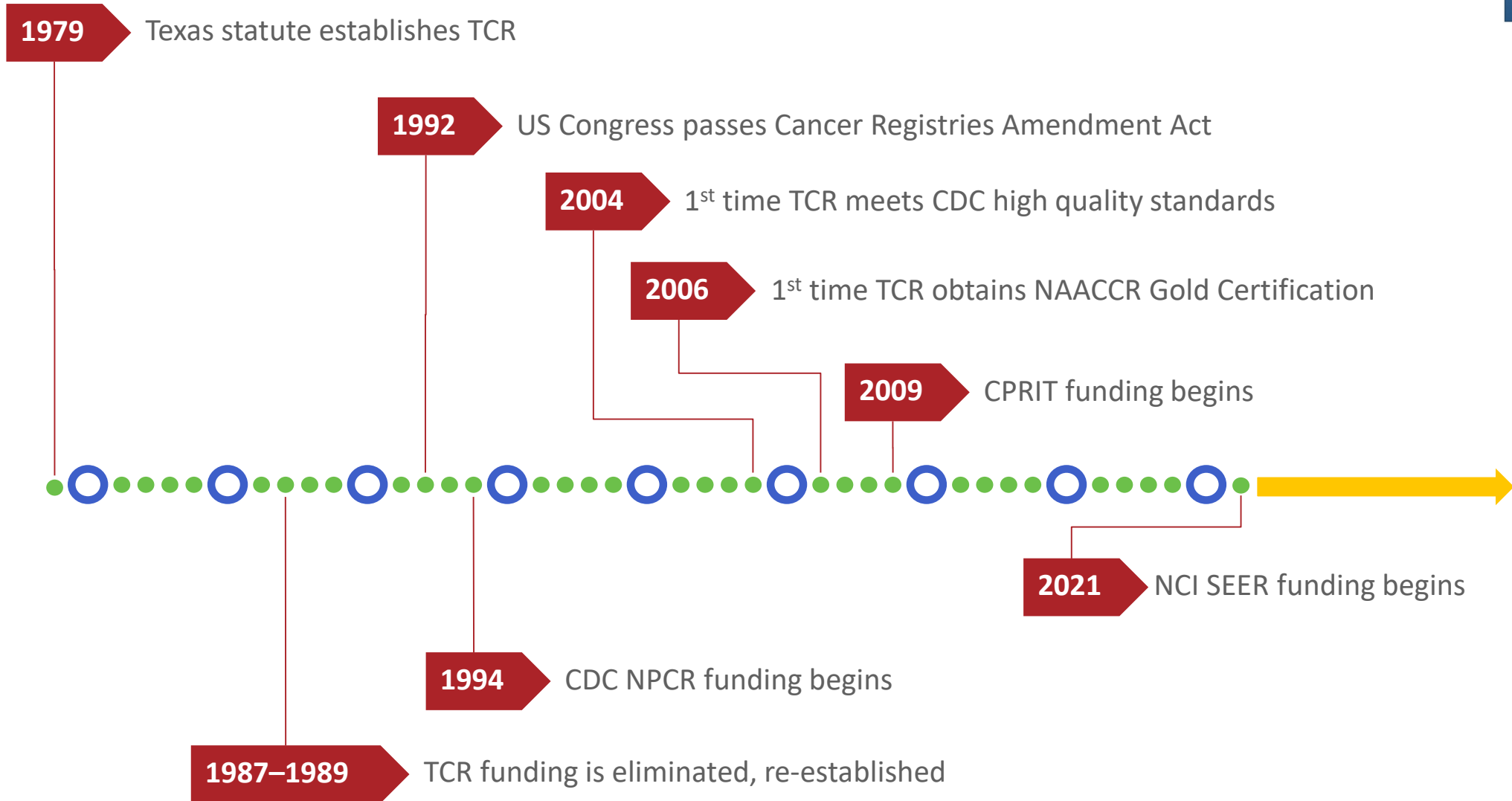
Texas Cancer Registry Overview



- The TCR is part of the Texas Department of State Health Services, the state public health agency within Texas Health and Human Services.
- 46 staff are in Austin, 4 in Arlington which is just outside Dallas/Fort Worth, and 3 in Houston.
- There are 21 CTRs and 15 staff hold advanced degrees including 5 PhDs.
- We are in process of adding 10 new positions with the additional NCI-SEER funding.



TCR Milestones



Texas Cancer Registry Overview



- The TCR is a combination active/passive statewide population-based surveillance system.
- We collect over 2,000 cases annually for approximately 320 small caseload, mostly rural health care facilities.
- In 2020, the TCR received 305,876 reports of cancer from over 500 hospitals, cancer treatment centers, ambulatory surgery centers, and pathology laboratories across Texas.
 - 12,578 reports were for out-of-state residents.

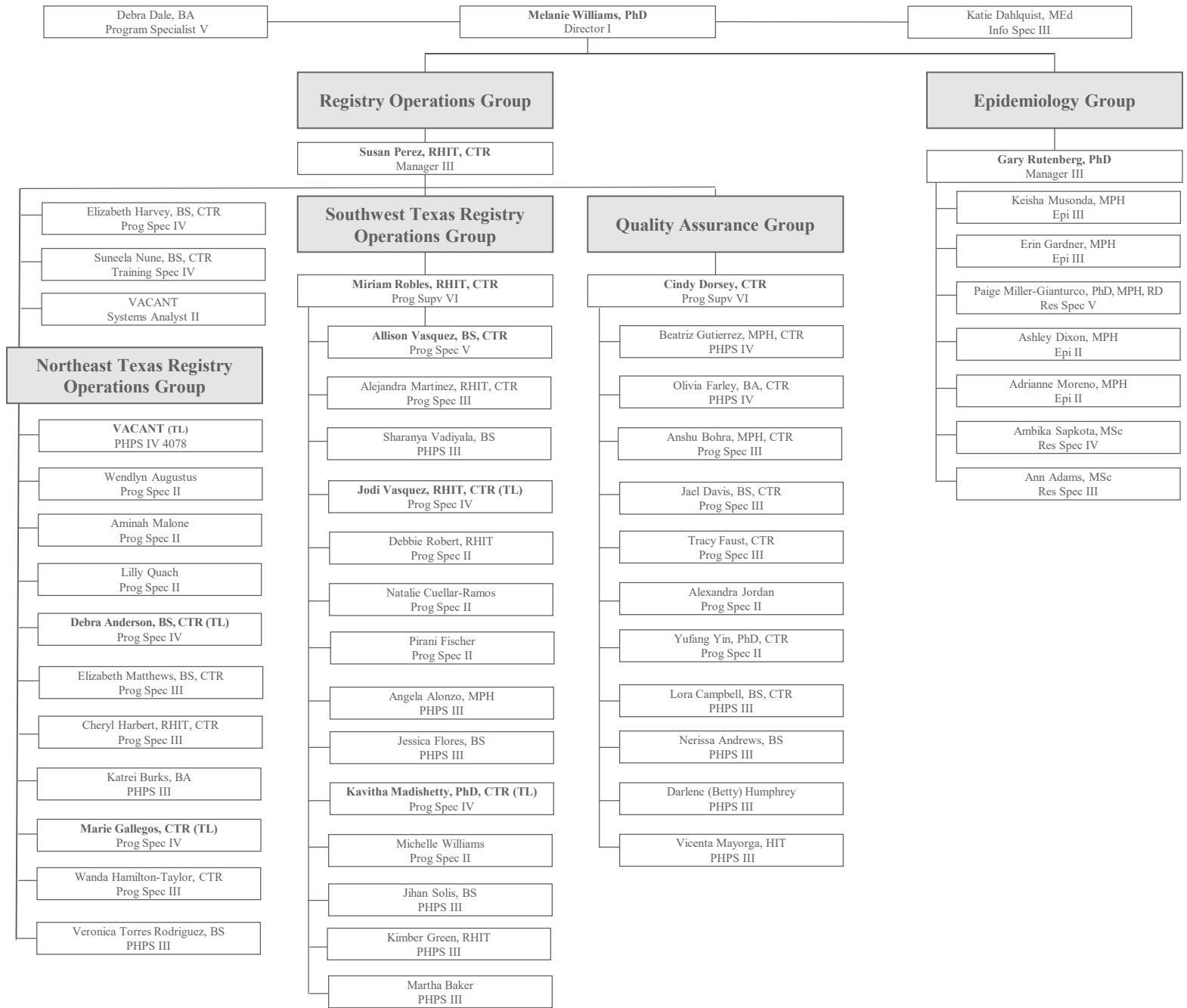


Texas Cancer Registry Overview



- The TCR has collected over 100,000 records for SEER registries for diagnosis years 1995–present.
- For 2018–2019, TCR provided over 7,000 abstracts to SEER registries through inter-state data exchange.

SEER Registry	2018	2019
LA	1,088	1,649
NM	1,322	1,470
CA	185	293
GA	133	227
KY	45	102
NY	76	92
IA	55	71
WI	49	58
HI	26	42
ID	14	27
UT	17	18
MA	13	24
CT	5	11
Total	3,028	4,084





**We are the
Texas Cancer Registry**

Texas Cancer Registry Partners



- Four NCI-designated cancer centers
 - University of Texas MD Anderson Cancer Center
 - Dan L. Duncan Cancer Center at Baylor College of Medicine
 - Simmons Comprehensive Cancer Center at UT Southwestern
 - Mays Cancer Center at UT Health San Antonio
- Cancer Prevention and Research Institute of Texas
 - CPRIT is a \$6 billion, 20-year initiative – the largest state cancer research investment in the history of the US and the second largest cancer research and prevention program in the world.
- Advisory Committee to the Texas Cancer Registry
 - Members include physicians, researchers, registry staff, and representatives from various cancer advocacy organizations

Recent Accomplishments



- SEER!
- Supporting COVID-19 public health response
- Transitioning from full-time office to full-time telework environment
- TCR data are being used in 72 active IRB-approved studies and support \$128 million in grant funding, the most in our agency
- 393 research publications used TCR data in the past five years (2016–2020)
- TCR staff continue serving in a variety of state, national and international steering committees, work groups, and leadership positions

Publications and Statistics



- Annual report on Cancer in Texas
- How TCR Data Are Used (annual)
- Texas Cancer Reporting newsletter
- Data tables
 - Cancer incidence and mortality rates
 - Expected cancer cases and deaths
 - Estimated cancer prevalence
 - Cancer survival
 - Potential Years of Life Lost
- The web query tool received 12,808 queries in 2020.

The collage displays various sections of the Texas Cancer Registry (TCR) website:

- Navigation:** Home, About DSHS, News, I Am A..., Most Popular, Resources, Online Services, Contact Us.
- Cancer Statistics and Publications:** A central hub for research and data.
- General Information:**
 - TCR Data Release Policy
 - Requested Citation When Using TCR Data
 - TCR Data Dictionary
 - How TCR Data Are Used
- Interactive Tools, Maps and Graphs:**
 - TCR Web Query Tool
 - CDC Cancer Data Visualizations
 - CDC/NCI State Cancer Profiles
- Data Tables:**
 - Cancer Incidence and Mortality
 - Childhood and Adolescent Cancer
 - Adolescents and Young Adults (AYA) Cancer
- Publications:**
 - Cancer in Texas 2020
 - 2020 Texas Cancer Registry Legislative Report
 - 2018-2019 Cancer Reporting Handbook
- Estimates for New Cancers:**
 - New Cancer Cases by Public Health Region, 2020
 - New Cancer Cases by Sex for Leading Sites, Texas, 2020
- Age-Adjusted Invasive Cancer Incidence Rates in Texas:**
 - Map of Texas showing incidence rates by county.
 - Table of rates by county.

Current Priorities



- SEER start up activities
 - Learning new SEER requirements
 - Preparing for 2022 new SEER data items
 - Adding 10 new staff positions
 - Moving to SEER*DMS
- Annual SEER, NPCR-CDC, and NAACCR data submissions
- Planning transition back from full-time telework to the office



Texas Cancer Registry (TCR)
Texas Department of State Health Services
Cancer Epidemiology and Surveillance Branch

Visit us on the web:

<https://www.dshs.texas.gov/tcr>

Or email

cancerdata@dshs.Texas.gov





**NATIONAL
CANCER
INSTITUTE**

www.cancer.gov

www.cancer.gov/espanol