



**2023 DSHS Arbovirus Activity Report
Week #43 (ending October 28, 2023)
Report Date: October 31, 2023**

Table 1. 2023 Arbovirus Activity Summary, Texas, Week 43

| Arbovirus | Mosquito Pools | Avian | Veterinary | Sentinel Chicken | Human | | | | | |
|-----------------------------------|----------------|----------|------------|------------------|-----------------|--------------------|---------------|---------------|----------|------------------|
| | | | | | Febrile Illness | Neurologic Illness | Severe Dengue | TOTAL (HUMAN) | Deaths | PVD ² |
| California Serogroup ¹ | | | | | | | | 0 | | |
| Chikungunya | | | | | | | | 0 | | |
| Dengue | | | | | 26 | | 1 | 27 | | |
| Eastern Equine Encephalitis | | | | | | | | 0 | | |
| St. Louis Encephalitis | 13 | | | 1 | | | | 0 | | |
| West Nile | 892 | | 5 | 6 | 17 | 54 | | 71 | 6 | 27 |
| Zika | | | | | | | | 0 | | |
| TOTAL REPORTS | 905 | 0 | 5 | 7 | 43 | 54 | 1 | 98 | 6 | 27 |

¹California Serogroup includes California encephalitis, Jamestown Canyon, Keystone, La Crosse, snowshoe hare, and trivittatus viruses.

²PVD - Presumptive viremic blood donors are people who had no symptoms at the time of donating blood through a blood collection agency, but whose blood tested positive when screened for the presence of West Nile virus or Zika virus. Unless they meet the case reporting criteria, they are not counted as a case for official reporting purposes and are not included in the "Total (HUMAN)" column.

Note: Human mortality from arboviral conditions is aggregated and reported monthly once documentation has been received and verified.

For more detailed information about West Nile virus, including past weekly and annual reports, please visit <https://www.dshs.texas.gov/mosquito-borne-diseases/dshs-arbovirus-weekly-activity-reports>

For more detailed information about Zika, please visit <http://www.texaszika.org/>

Table 2. 2023 Aedes-Associated Arbovirus Activity by County†, Week 43

| County | CHIKV | | DENV | | ZIKV | | |
|-------------------------|-------|---|------|----|------|---|-----|
| | M | H | M | H | M | H | PVD |
| Collin | | | | 4 | | | |
| Dallas* | | | | 5 | | | |
| Denton | | | | 2 | | | |
| Fort Bend | | | | 3 | | | |
| Galveston | | | | 1 | | | |
| Hays | | | | 1 | | | |
| Montgomery | | | | 1 | | | |
| Refugio | | | | 1 | | | |
| Tarrant | | | | 5 | | | |
| Travis | | | | 4 | | | |
| Total Number of Reports | 0 | 0 | 0 | 27 | 0 | 0 | 0 |

M- mosquito H- human PVD- Presumptive viremic blood donors

CHIKV - Chikungunya Virus

DENV - Dengue Virus

ZIKV - Zika Virus

* One case acquired by mosquito transmission in Val Verde County

†County level data is not reported for conditions with <5 cases reported in a year.

Table 3. 2023 Other Arbovirus Activity by County†, Week 43

| County | CAL | | EEEV | | | | SLEV | | | WNV | | | | | | | |
|------------|-----|---|------|---|----|---|------|----|---|-----|---|---|----|-----|------|------|-------|
| | M | H | M | V | SC | H | M | SC | H | M | A | V | SC | H | | | |
| | | | | | | | | | | | | | | WNF | WNND | PVD# | TOTAL |
| Bell | | | | | | | | | | 38 | | | | 1 | 1 | | 2 |
| Bexar | | | | | | | | | | 9 | | | | | 4 | 1 | 4 |
| Bowie | | | | | | | | | | 0 | | | | | 1 | | 1 |
| Brazoria | | | | | | | | | | 4 | | | | | | | 0 |
| Brazos | | | | | | | | | | 1 | | | | | | | 0 |
| Carson | | | | | | | | | | 0 | | | | | | 2 | 0 |
| Castro | | | | | | | | | | 0 | | 1 | | | | | 0 |
| Collin | | | | | | | | | | 15 | | | | 1 | | 1 | 1 |
| Crosby | | | | | | | | | | 0 | | | | 1 | | | 1 |
| Dallas | | | | | | | | | | 213 | | | | 5 | 14 | 1 | 19 |
| Denton | | | | | | | | | | 17 | | | | | 2 | 2 | 2 |
| El Paso | | | | | | | 1 | | | 11 | | | | | 3 | 1 | 3 |
| Ellis | | | | | | | | | | 7 | | | | | | | 0 |
| Franklin | | | | | | | | | | 0 | | | | | 1 | 1 | 1 |
| Galveston | | | | | | | | | 1 | 0 | | | 6 | | 1 | | 1 |
| Gray | | | | | | | | | | 0 | | 1 | | | | | 0 |
| Grayson | | | | | | | | | | 2 | | | | | | | 0 |
| Harris | | | | | | | 1 | | | 52 | | | | 1 | | 3 | 1 |
| Hartley | | | | | | | | | | 0 | | | | | | 1 | 0 |
| Hemphill | | | | | | | | | | 0 | | | | 1 | | | 1 |
| Hockley | | | | | | | | | | 0 | | | | | 1 | | 1 |
| Hunt | | | | | | | | | | 14 | | | | | 2 | | 2 |
| Hutchison | | | | | | | | | | 0 | | | | | | 1 | 0 |
| Jefferson | | | | | | | | | | 1 | | | | | | | 0 |
| Johnson | | | | | | | | | | 10 | | | | | | | 0 |
| Lubbock | | | | | | | 3 | | | 57 | | | | | 1 | 5 | 1 |
| Lynn | | | | | | | | | | 0 | | | | | 1 | | 1 |
| Midland | | | | | | | | | | 9 | | | | | | | 0 |
| Montgomery | | | | | | | | | | 68 | | | | 1 | 3 | | 4 |
| Moore | | | | | | | | | | 0 | | | | | | 1 | 0 |
| Ochiltree | | | | | | | | | | 0 | | | | | 1 | | 1 |

| | | | | | | | | | | | | | | | | | |
|-------------------------|---|---|---|---|---|---|----|---|---|-----|---|---|---|----|----|----|----|
| Orange | | | | | | | | | | 1 | | | | | | | 0 |
| Potter | | | | | | | | | | 12 | | | | 2 | | 1 | 2 |
| Randall | | | | | | | 6 | | | 28 | | 2 | | 3 | 4 | 4 | 7 |
| Roberts | | | | | | | | | | 0 | | 1 | | | | | 0 |
| Rockwall | | | | | | | | | | 4 | | | | | | | 0 |
| Smith | | | | | | | | | | 0 | | | | | 1 | | 1 |
| Swisher | | | | | | | | | | 0 | | | | | 1 | | 1 |
| Tarrant | | | | | | | | | | 229 | | | | 1 | 8 | 1 | 9 |
| Taylor | | | | | | | | | | 1 | | | | | 1 | | 1 |
| Terry | | | | | | | | | | 1 | | | | | | | 0 |
| Travis | | | | | | | | | | 47 | | | | | 1 | 1 | 1 |
| Wichita | | | | | | | 2 | | | 9 | | | | | | | 0 |
| Williamson | | | | | | | | | | 32 | | | | | 1 | | 1 |
| Zavala | | | | | | | | | | 0 | | | | | 1 | | 1 |
| Total Number of Reports | 0 | 0 | 0 | 0 | 0 | 0 | 13 | 1 | 0 | 892 | 0 | 5 | 6 | 17 | 54 | 27 | 71 |

M- mosquito A- avian V- veterinary SC- sentinel chicken H- human WNF- West Nile Fever WNND- West Nile Neuroinvasive Disease PVD- Presumptive viremic blood donors

CAL - California Serogroup Viruses

EEEV - Eastern Equine Encephalitis Virus

SLEV - St. Louis Encephalitis Virus

WNV - West Nile Virus

†County level data is not reported for conditions with <5 cases reported in a year.

‡PVDs are not included in the "Total" column.

Figure 1. Texas Counties Reporting Arbovirus Activity, Week 43

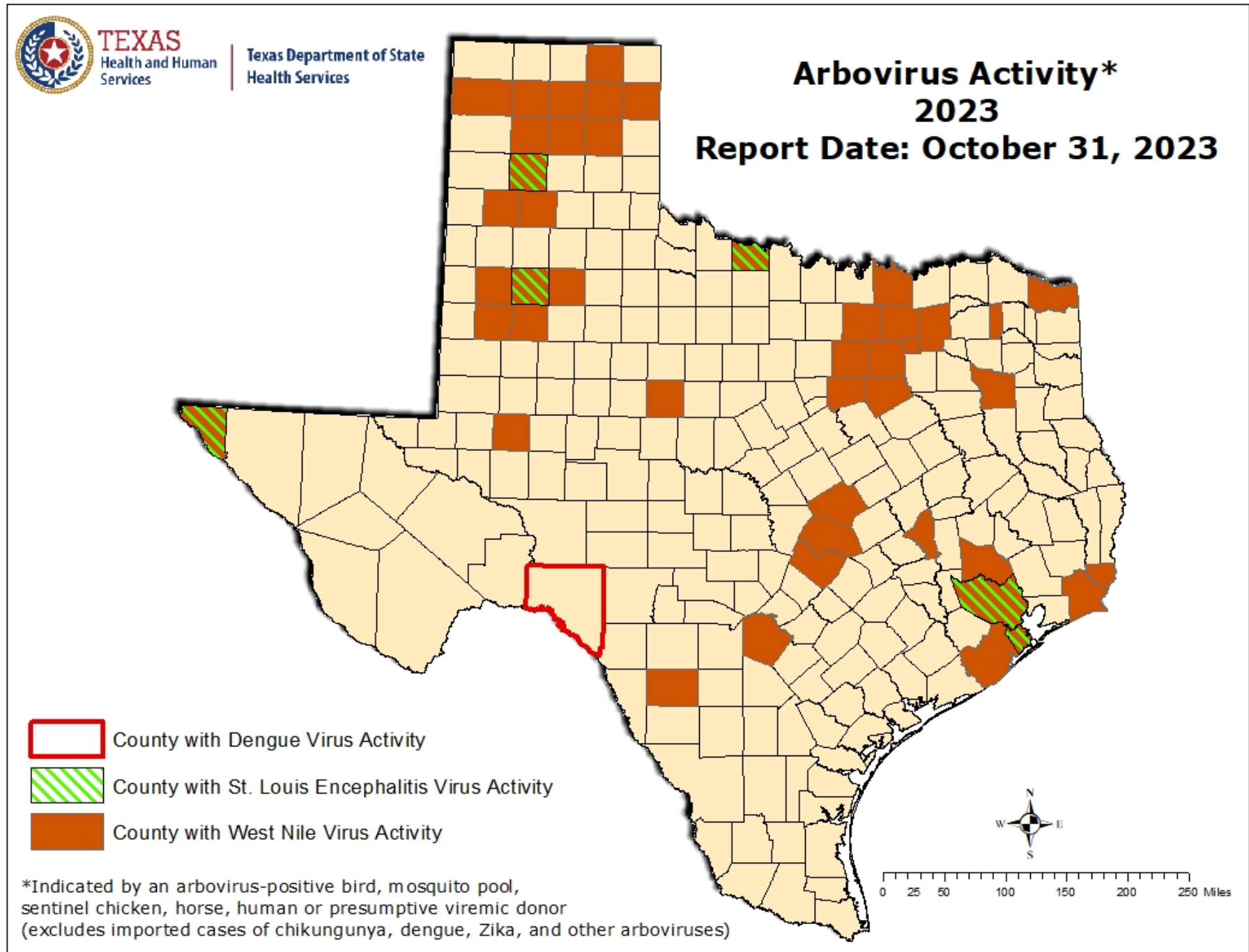


Figure 2. WNV-Positive Mosquito Pools Reported in Texas, by MMWR Week of Collection, 2021-2023, Week 43

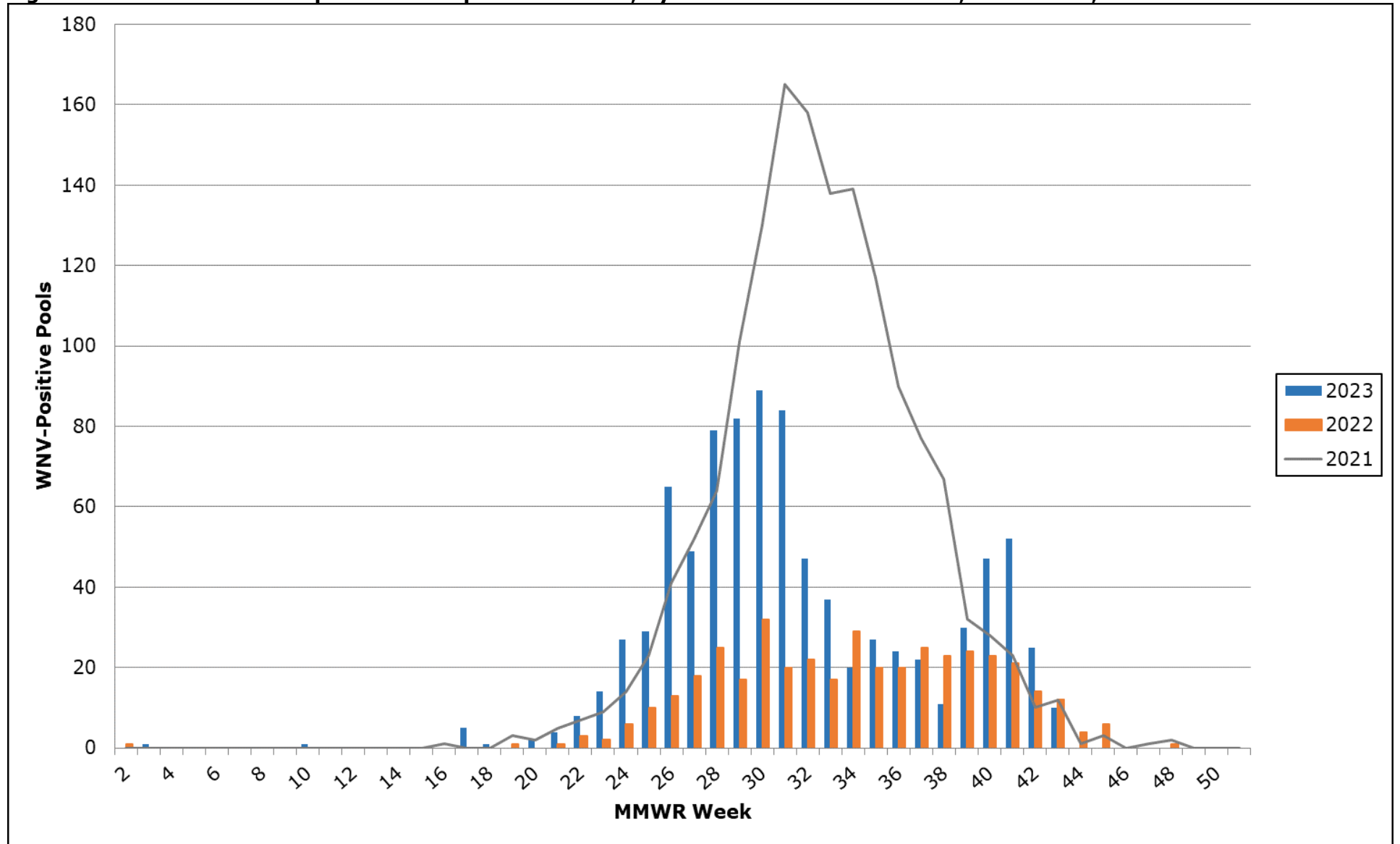


Figure 3. Human Cases of West Nile Virus Reported in Texas, by MMWR Week of Onset, 2021-2023, Week 43

