

**Weekly Flu Surveillance Report**  
**Public Health Region 9/10**  
**Week 41- October 10th-October 16th**



Texas Department of State Health Services

**Disclaimer**

Most cases of influenza are not reportable in the state of Texas, thus the data in this report was collected from hospitals, clinics, and schools throughout the region who have agreed to voluntarily submit data.

**Definitions**

**ILI:** Influenza-Like Illness. This is an illness that resembles the flu, but has not been confirmed. **Rapid:** These tests are typically done in-house to quickly test for influenza. **PCR:** These tests are generally more precise than rapid tests and are performed at the DSHS state lab and many commercial labs to confirm a case of influenza.

**Geographic Spread of Influenza in the Region**

No Activity	Sporadic	Local	Regional	Widespread
-------------	----------	-------	----------	------------

Geographic spread is determined using the CDC's guidelines for flu activity: <http://www.cdc.gov/flu/weekly/overview.htm>.

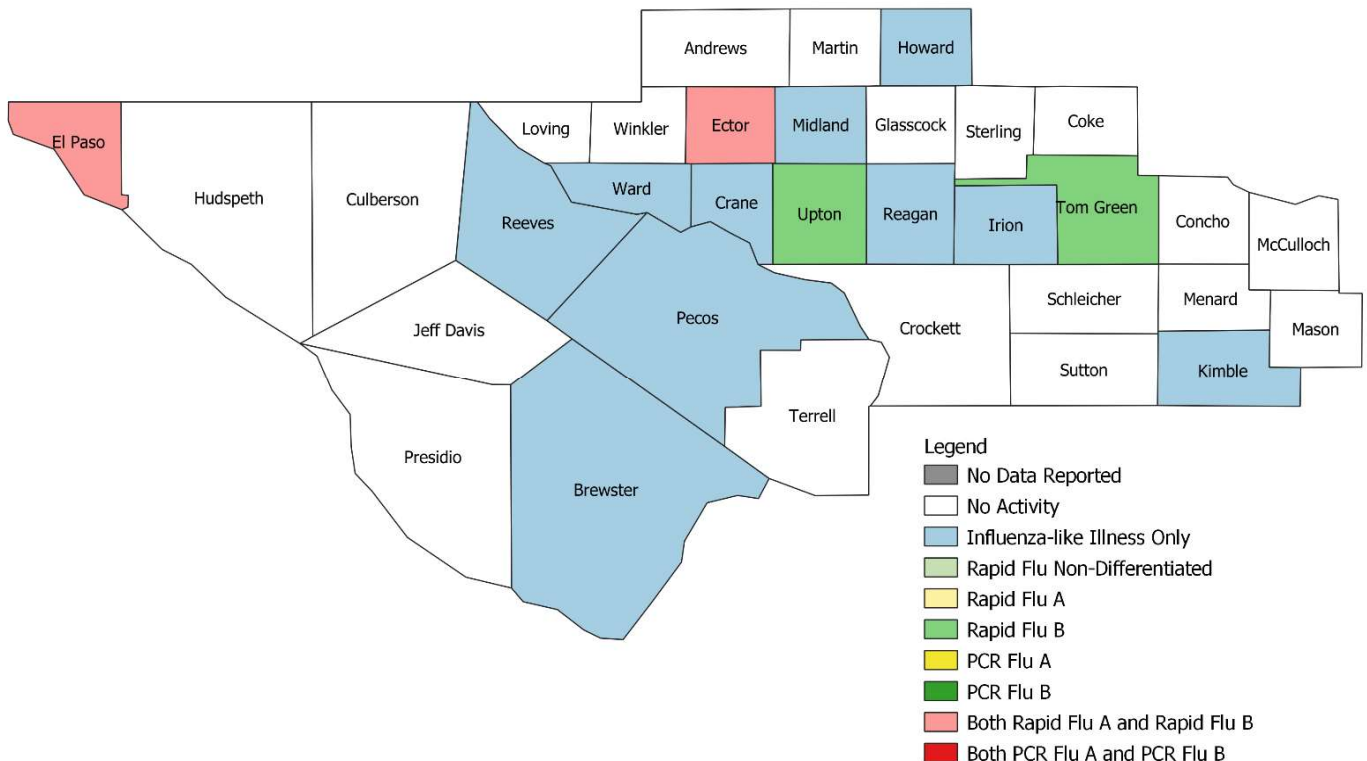
**Summary Data**

Condition	Week 41	Week 40	Week 39
Number of Counties Reporting (36 total)	→ 36	36	0
Number of Counties Reporting ILI	↓ 15	18	0
Number of Counties Reporting High Levels of ILI*	↓ 7	8	0
Number of Counties Reporting Flu A	↑ 2	1	0
Number of Counties Reporting Flu B	→ 4	4	0
Number of Counties Reporting Flu A & Flu B	↑ 2	1	0

The arrows represent changes from the previous week. A sideways arrow means there was no change in that condition.

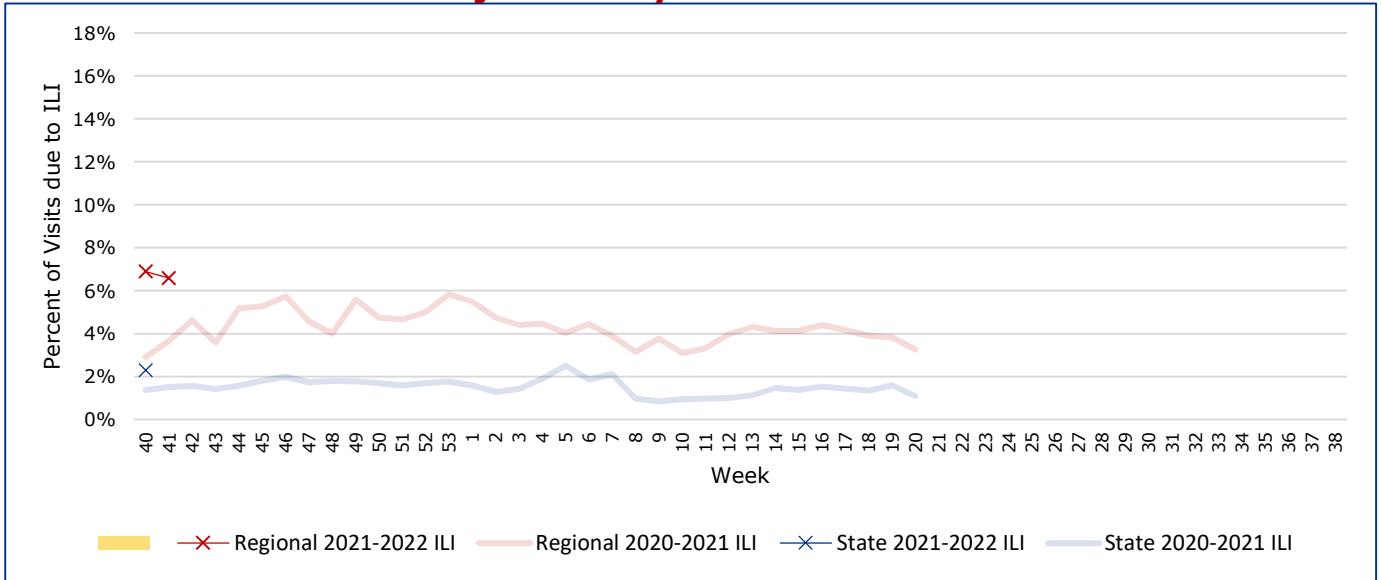
\*Counties with total percent of visits due to ILI above 4.0% for the week are considered to have high/abnormal levels.

**Map of Regional Flu Activity**



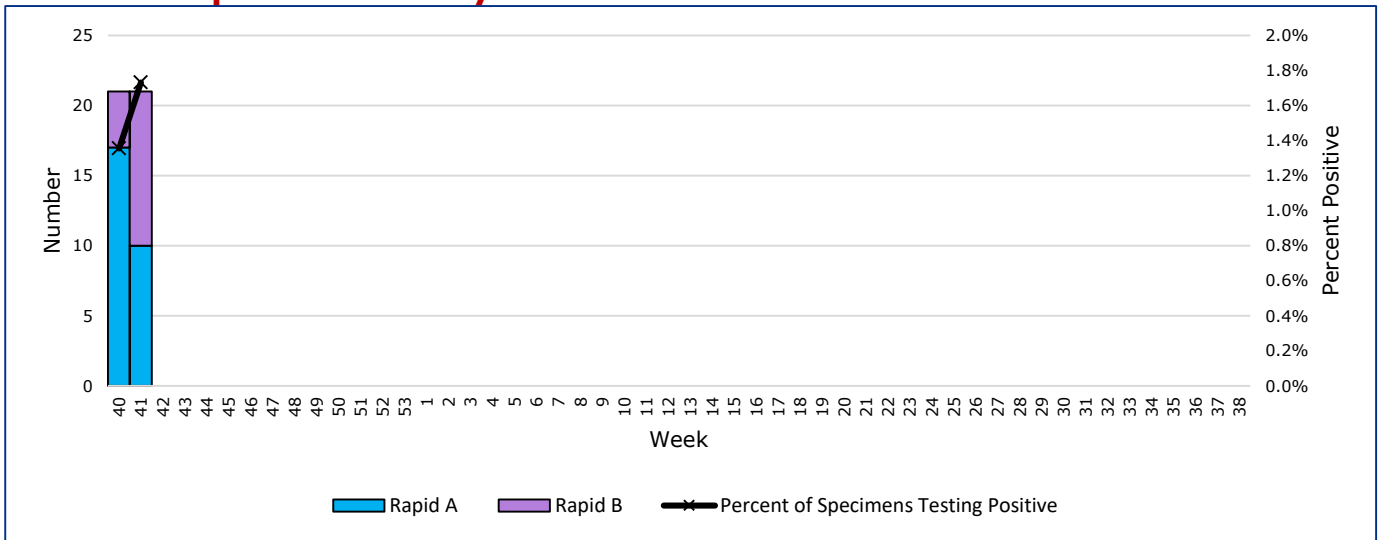
The map above depicts the previous week's reports of flu or influenza-like illness activity in each county. The legend on the bottom right of the map describes the meaning of each color.

## Influenza-Like Illness Projections by Week



This chart documents the percentage of patient visits that were due to ILI at hospitals and clinics around the region. It compares our region's data with the state's data and also compares to last flu season.

## Positive Rapid Flu Tests by Week



This chart documents the number of rapid tests that have come back positive for flu A and flu B each week throughout the region.

## Flu Data by County

County	Week 41				Week 40				Week 39			
	Patient Visits	% with ILI	Flu A	Flu B	Patient Visits	% with ILI	Flu A	Flu B	Patient Visits	% with ILI	Flu A	Flu B
Andrews	461	0%	0	0	483	0%	0	0	0		0	0
Borden	1	0%	0	0	3	0%	0	0	0		0	0
Brewster	81	1%	0	0	89	1%	0	0	0		0	0
Coke	5	0%	0	0	6	0%	0	0	0		0	0
Concho	16	0%	0	0	12	0%	0	0	0		0	0
Crane	29	3%	0	0	44	2%	0	0	0		0	0
Crockett	4	0%	0	0	4	0%	0	0	0		0	0
Culberson	8	0%	0	0	9	0%	0	0	0		0	0
Dawson	159	0%	0	0	157	1%	0	0	0		0	0
Ector	3148	19%	9	7	4515	15%	17	1	0		0	0
El Paso	8421	2%	1	1	7733	2%	0	2	0		0	0
Gaines	127	1%	0	0	122	3%	0	0	0		0	0
Glasscock	1	0%	0	0	5	20%	0	0	0		0	0
Howard	394	5%	0	0	2428	4%	0	0	0		0	0
Hudspeth	13	0%	0	0	32	0%	0	0	0		0	0
Irion	55	2%	0	0	47	0%	0	0	0		0	0
Jeff Davis	18	0%	0	0	15	7%	0	0	0		0	0
Kimble	172	1%	0	0	166	0%	0	0	0		0	0
Loving	1	0%	0	0	1	0%	0	0	0		0	0
McCulloch	26	0%	0	0	81	2%	0	0	0		0	0
Martin	51	0%	0	0	61	10%	0	0	0		0	0
Mason	30	0%	0	0	46	7%	0	0	0		0	0
Menard	12	0%	0	0	12	0%	0	0	0		0	0
Midland	3562	7%	0	0	2398	11%	0	0	0		0	0
Pecos	125	2%	0	0	131	0%	0	0	0		0	0
Presidio	57	0%	0	0	51	0%	0	0	0		0	0
Reagan	19	5%	0	0	27	4%	0	0	0		0	0
Reeves	145	10%	0	0	705	3%	0	0	0		0	0
Schleicher	19	0%	0	0	23	0%	0	0	0		0	0
Sterling	1	0%	0	0	2	0%	0	0	0		0	0
Sutton	17	0%	0	0	14	0%	0	0	0		0	0
Terrell	20	0%	0	0	4	0%	0	0	0		0	0
Tom Green	1239	1%	0	2	1226	2%	0	1	0		0	0
Upton	59	41%	0	1	105	3%	0	0	0		0	0
Ward	669	14%	0	0	98	0%	0	0	0		0	0
Winkler	32	0%	0	0	445	25%	0	0	0		0	0
<b>Total</b>	<b>19197</b>	<b>6.4%</b>	<b>10</b>	<b>11</b>	<b>21300</b>	<b>6.8%</b>	<b>17</b>	<b>4</b>	<b>0</b>		<b>0</b>	<b>0</b>

## Flu-Associated Pediatric Deaths & Outbreaks

No flu-associated pediatric deaths have been reported in PHR 9/10 this flu season. No flu outbreaks have been reported for Week 41.