



### Weekly Flu Surveillance Report

Week 11 - March 10th - March 16th, 2024

### Disclaimer

Most cases of influenza are not reportable in the state of Texas, thus the data in this report was collected from hospitals, clinics, and schools throughout the region who have agreed to voluntarily submit data.

### Definitions

**ILI:** Influenza-Like Illness. This is an illness that resembles the flu, but has not been confirmed. **Rapid:** These tests are typically done in-house to quickly test for influenza. **PCR:** These tests are generally more precise than rapid tests and are performed at the DSHS state lab and many commercial labs to confirm a case of influenza.

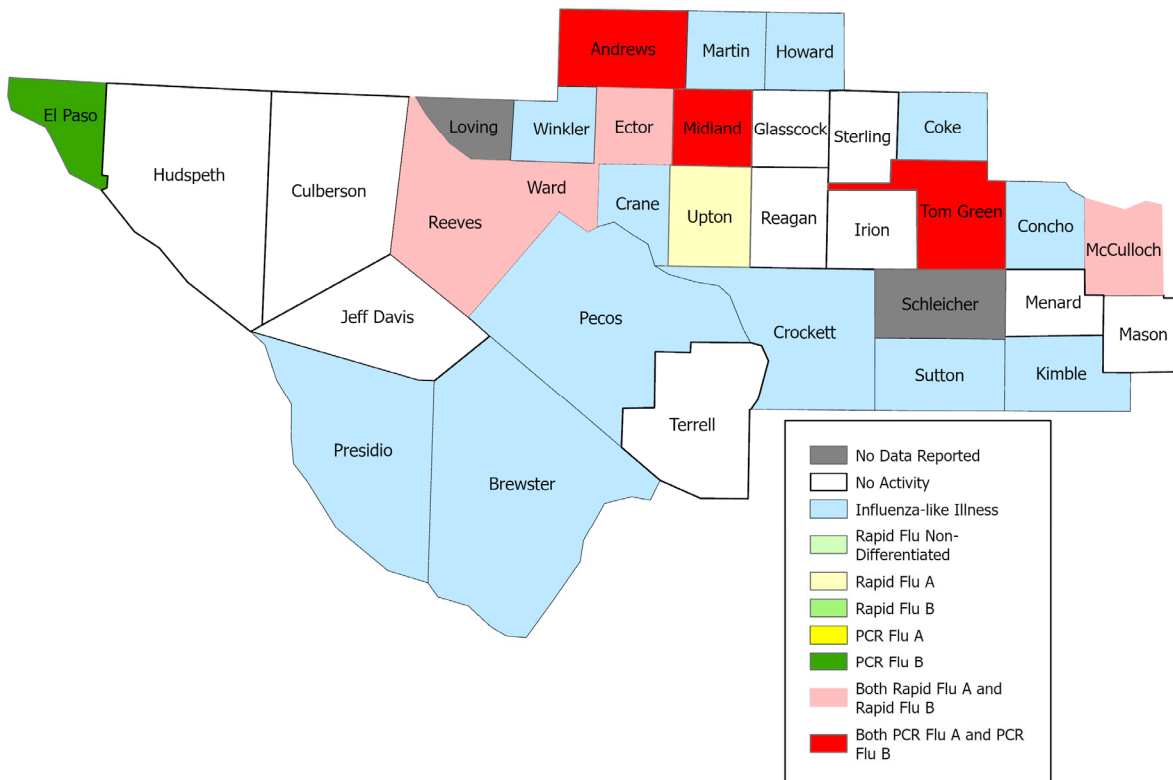
### Summary Data

Condition	Week 11	Week 10	Week 09
Number of Counties Reporting (36 total)	↓ 34	35	35
Number of Counties Reporting ILI	↑ 18	17	22
Number of Counties Reporting High Levels of ILI*	↓ 4	7	10
Number of Counties Reporting Flu A	→ 8	8	9
Number of Counties Reporting Flu B	↓ 8	10	10
Number of Counties Reporting Flu A & Flu B	↓ 7	8	9

The arrows represent changes from the previous week. A sideways arrow means there was no change in that condition.

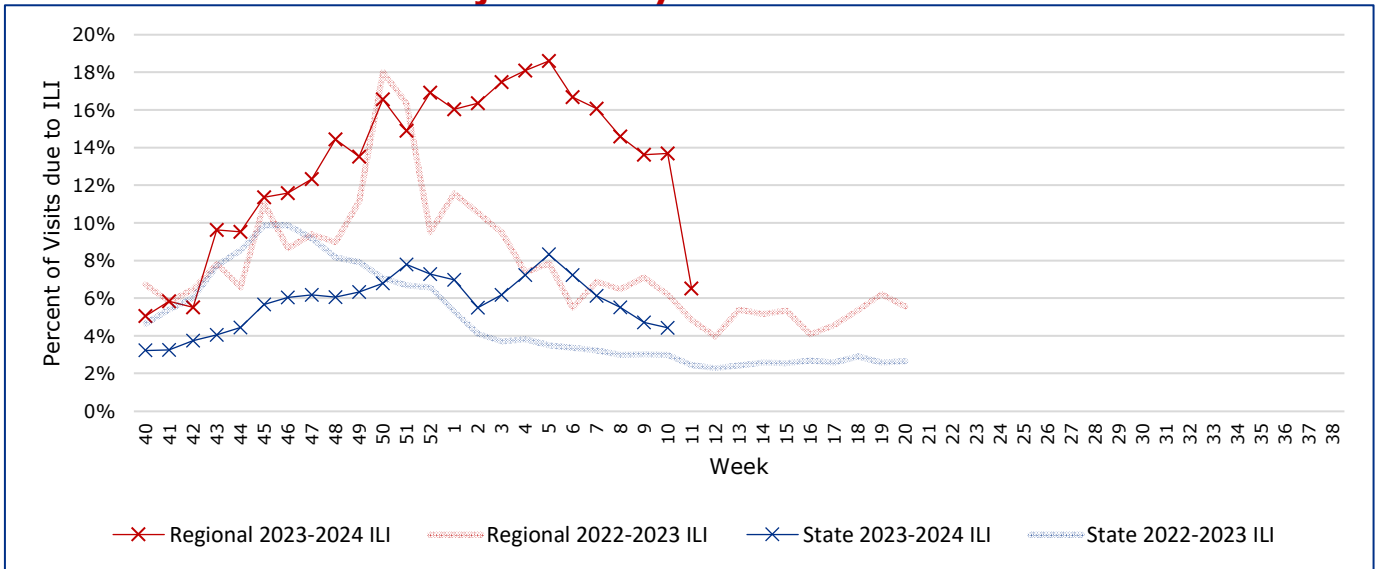
\*Counties with total percent of visits due to ILI above 4.0% for the week are considered to have high/abnormal levels.

### Map of Regional Flu Activity



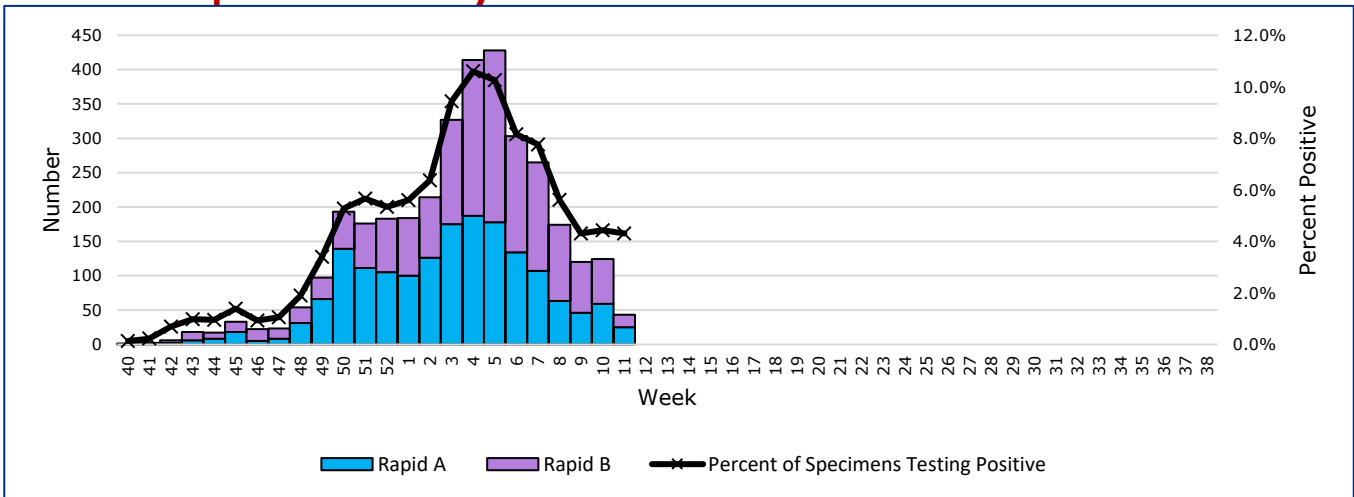
The map above depicts the previous week's reports of flu or influenza-like illness activity in each county. The legend on the bottom right of the map describes the meaning of each color.

## Influenza-Like Illness Projections by Week



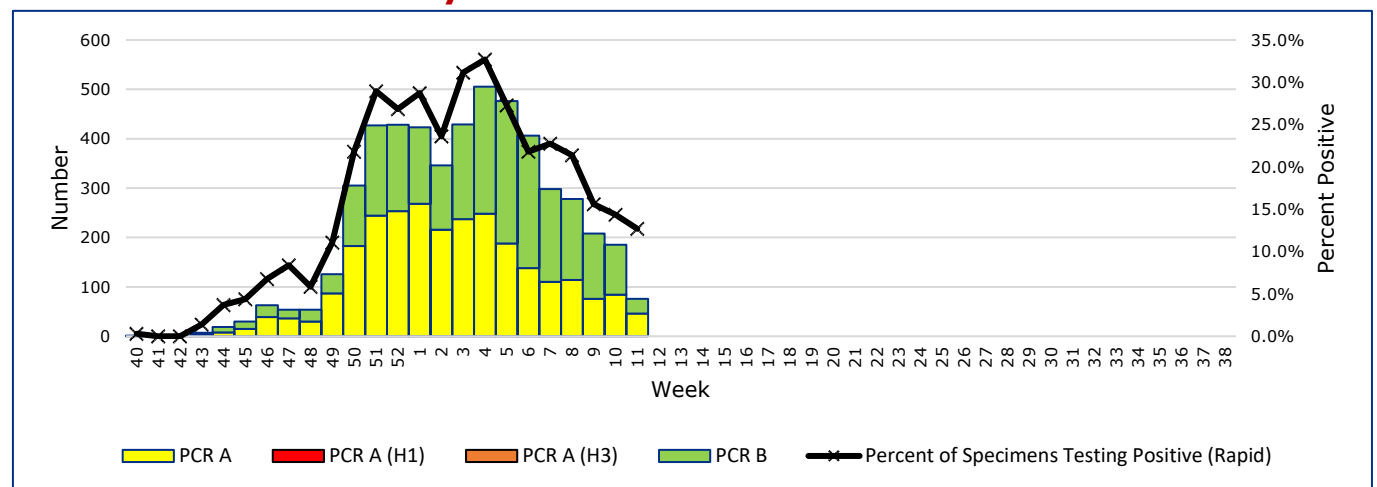
This chart documents the percentage of patient visits that were due to ILI at hospitals and clinics around the region, excluding confirmed COVID cases. It compares our region's data with the state's data and also compares to last flu season.

## Positive Rapid Flu Tests by Week



This chart documents the number of rapid tests that have come back positive for flu A and flu B each week throughout the region.

## Positive PCR Flu Tests by Week



This chart documents the number of PCR tests that have come back positive for flu A and flu B each week throughout the region.

## Flu Data by County

County	Week 11				Week 10				Week 09			
	Patient Visits	% with ILI	Flu A	Flu B	Patient Visits	% with ILI	Flu A	Flu B	Patient Visits	% with ILI	Flu A	Flu B
Andrews	610	11%	2	4	684	12%	4	13	707	13%	4	11
Borden	1	0%	0	0	0		0	0	1	0%	0	0
Brewster	85	0%	0	0	80	0%	0	0	88	0%	0	0
Coke	7	0%	0	0	2	0%	0	0	7	0%	0	0
Concho	22	0%	0	0	22	0%	0	0	15	0%	0	0
Crane	42	0%	0	0	43	0%	0	0	32	0%	0	0
Crockett	9	0%	0	0	15	0%	0	0	15	0%	0	0
Culberson	8	0%	0	0	3	0%	0	0	4	0%	0	0
Dawson	156	0%	0	0	155	0%	0	0	145	0%	0	0
Ector	2156	7%	8	7	5816	29%	56	69	5839	31%	44	93
El Paso	7447	1%	0	5	7427	1%	1	12	7415	0%	0	0
Gaines	147	0%	0	0	150	0%	0	0	134	0%	0	0
Glasscock	7	0%	0	0	6	0%	0	0	13	8%	0	0
Howard	352	0%	0	0	590	4%	4	2	575	3%	2	3
Hudspeth	14	0%	0	0	22	0%	0	0	22	0%	0	0
Irion	1	0%	0	0	2	0%	0	0	1	0%	0	0
Jeff Davis	13	0%	0	0	21	0%	0	0	14	0%	0	0
Kimble	116	2%	0	0	121	1%	0	0	128	5%	0	0
Loving	0		0	0	2	0%	0	0	3	0%	0	0
McCulloch	63	76%	1	3	73	88%	7	3	91	82%	3	8
Martin	67	0%	0	0	165	8%	0	5	233	8%	0	1
Mason	33	0%	0	0	35	0%	0	0	51	0%	0	0
Menard	6	0%	0	0	5	0%	0	0	9	0%	0	0
Midland	2676	13%	32	12	3168	16%	33	33	3088	15%	32	41
Pecos	140	0%	0	0	135	0%	0	0	166	0%	0	0
Presidio	139	24%	0	0	37	0%	0	0	72	6%	0	0
Reagan	10	0%	0	0	22	0%	0	0	25	0%	0	0
Reeves	923	7%	6	5	199	0%	0	0	198	0%	0	0
Schleicher	0		0	0	1	0%	0	0	0		0	0
Sterling	2	0%	0	0	2	0%	0	0	2	0%	0	0
Sutton	28	0%	0	0	21	0%	0	0	19	0%	0	0
Terrell	1	0%	0	0	5	0%	0	0	8	0%	0	0
Tom Green	1354	2%	10	10	1390	2%	15	17	1408	2%	15	30
Upton	94	15%	1	0	144	22%	0	6	120	18%	1	1
Ward	568	49%	11	2	832	42%	23	6	623	39%	11	14
Winkler	82	0%	0	0	90	0%	0	0	417	25%	10	4
<b>Total</b>	<b>17379</b>	<b>6.3%</b>	<b>71</b>	<b>48</b>	<b>21485</b>	<b>13.4%</b>	<b>143</b>	<b>166</b>	<b>21688</b>	<b>13.6%</b>	<b>122</b>	<b>206</b>

## **Flu-Associated Pediatric Deaths & Outbreaks**

No flu-associated pediatric deaths have been reported in PHR 9/10 this flu season. In PHR 9/10, no flu outbreaks have been reported for Week 11.

**For a more comprehensive look at respiratory illnesses circulating throughout Texas, please visit: <https://www.dshs.texas.gov/texas-respiratory-virus-surveillance-report> and select the "Current Texas Respiratory Virus Surveillance Report"**