



**2020 DSHS Arbovirus Activity Report  
Week #51 (ending December 19, 2020)  
Report Date: Dec 22, 2020**

**Table 1. 2020 Arbovirus Activity Summary, Texas, Week 51**

Arbovirus	Positive Mosquito Pools	Avian	Equine	Sentinel Chicken	Human						TOTAL
					Febrile Illness	Neurologic Illness	Severe Dengue	TOTAL (HUMAN)	Deaths	PVD <sup>2</sup>	
California Serogroup <sup>1</sup>								0			0
Chikungunya					2			2			2
Dengue					39			39			39
Eastern Equine Encephalitis								0			0
St. Louis Encephalitis	16			1		2		2			19
West Nile	1389	1	4	3	10	58		68	11	30	1465
Zika								0			0
<b>TOTAL REPORTS</b>	<b>1405</b>	<b>1</b>	<b>4</b>	<b>4</b>	<b>51</b>	<b>60</b>	<b>0</b>	<b>111</b>	<b>11</b>	<b>30</b>	<b>1525</b>

<sup>1</sup>California Serogroup includes California encephalitis, Jamestown Canyon, Keystone, La Crosse, snowshoe hare, and trivittatus viruses.

<sup>2</sup>PVD - Presumptive viremic blood donors are people who had no symptoms at the time of donating blood through a blood collection agency, but whose blood tested positive when screened for the presence of West Nile virus or Zika virus. Unless they meet the case reporting criteria, they are not counted as a case for official reporting purposes and are not included in the "Total" column.

Note: Human mortality from arboviral conditions is aggregated and reported monthly once documentation has been received and verified.

For more detailed information about West Nile virus, including past weekly and annual reports, please visit

<http://www.dshs.texas.gov/idcu/disease/arboviral/westNile/>

For more detailed information about Zika, please visit <http://www.texaszika.org/>

**Table 2. 2020 Aedes-Associated Arbovirus Activity by County†, Week 51**

County	CHIKV*		DENV**		ZIKV*			COUNTY TOTAL
	M	H	M	H	M	H	PVD‡	
Bastrop				1				1
Bexar				1				1
Brazos				1				1
Cameron				1				1
Collin				1				1
Ector				1				1
Fort Bend				2				2
Harris				3				3
Hays				1				1
Hidalgo				12				12
Travis				2				2
Webb				13				13
Total Number of Reports	0	2	0	39	0	0	0	41

M - mosquito H- human

CHIKV - Chikungunya Virus

DENV - Dengue Virus

ZIKV - Zika Virus

\*All reported cases are imported.

\*\*Includes cases transmitted by mosquitoes in Texas: Hidalgo County (5), Webb County (3).

†County level data is not reported for conditions with <5 cases reported in a year.

‡PVDs are not included in the "County Total" column.

**Table 3. 2020 Other Arbovirus Activity by County†, Week 51**

County	CAL		EEEV				SLEV			WNV								COUNTY TOTAL	
	M	H	M	E	SC	H	M	SC	H	M	A	E	SC	H					
														WNF	WNND	PVD†	TOTAL		
Bexar										2								0	2
Blanco																1		1	1
Brazoria										1								0	1
Brazos										4						1		1	5
Cameron							1									1		1	2
Coke																	1	0	0
Collin										53					1	3		4	57
Colorado																1		1	1
Dallas										481					5	13	4	18	499
Denton										53						5	2	5	58
Ellis																1		1	1
El Paso							3			6								0	9
Erath												1						0	1
Galveston								1					3					0	4
Hardeman												1						0	1
Harris										23	1					1		1	25
Hidalgo									1							2		2	3
Hood															2	1		2	2
Hunt										1								0	1
Jefferson																	2	0	0
Johnson										11								0	11
Jones												1						0	1
Kleberg							5		1									0	6
Lubbock							2			4								0	6
Montgomery										102				2	3	4	5	107	107
Nueces							5			2								0	7
Orange														1	1	2	2	2	2
Red River																1		1	1
Tarrant										592				1	15	12	16	608	608
Taylor												1						0	1
Travis										36					4	1	4	40	40
Webb										1								0	1
Williamson										17					3	1	3	20	20
Total Number of Reports	0	0	0	0	0	0	16	1	2	1389	1	4	3	10	58	30	68	1484	

M - mosquito A-avian E-equine SC- sentinel chicken H- human WNF - West Nile Fever WNND - West Nile Neuroinvasive Disease

CAL - California Serogroup Viruses

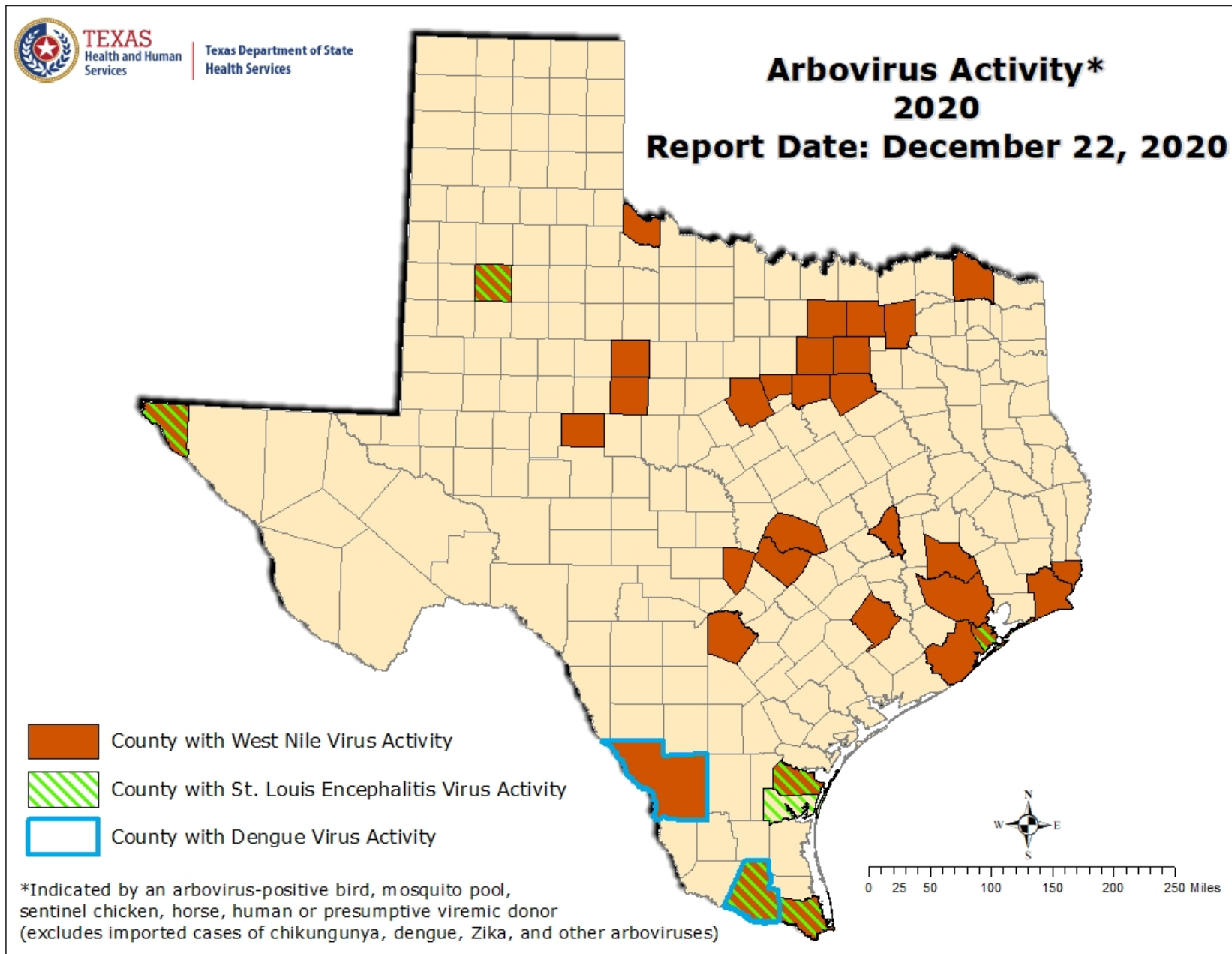
EEEV - Eastern Equine Encephalitis Virus

SLEV - St. Louis Encephalitis Virus

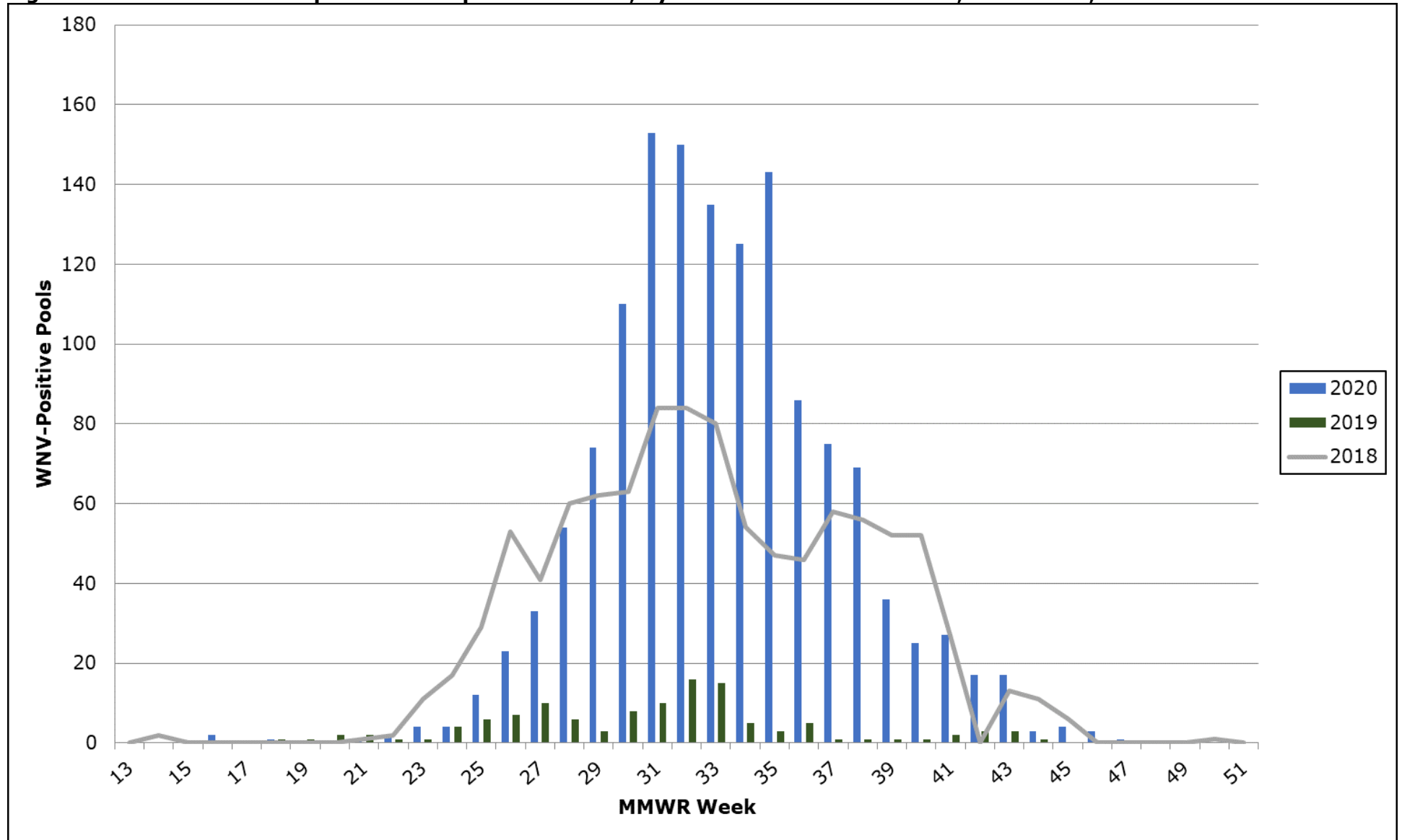
WNV - West Nile Virus

† PVDs are not included in any of the "total" columns.

Figure 1. Texas Counties Reporting Arbovirus Activity, Week 51



**Figure 2. WNV-Positive Mosquito Pools Reported in Texas, by MMWR Week of Collection, 2018-2020, Week 51**



**Figure 3. Human Cases of West Nile Virus Reported in Texas, by MMWR Week of Onset, 2018-2020, Week 51**

