



HAI Reporting In Texas

Jennifer Vinyard, MPH, CIC
Epidemiologist
for

David Rhinehart
Clinical Specialist

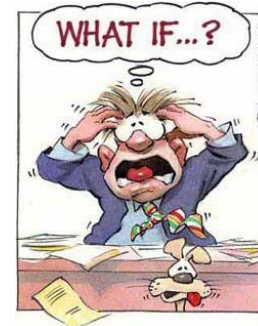
David.Rhinehart@dshs.state.tx.us

512-776-6878

Objectives

- Review Current Status of Reporting
- Summarize Results from 2012 Data Audits
- Review 2012 Data summary
- Discuss Frequently Asked Questions
- Review What's New?
- Discuss the Future of Reporting

Reporting, Reporting, Reporting!



PHASE	HAI	Facility Type/Unit	Start Date
1st	CLABSI	PEDIATRIC and ADULT General Hospital ICUs	October 1, 2011
	KPRO and related SSIs	ADULT General Hospitals and ASCs	October 1, 2011
	VSHN and related SSIs	PEDIATRIC General Hospitals	October 1, 2011
2 nd (in addition to 1 st phase)	HPRO and related SSIs	ADULT General Hospitals and ASCs	January 1, 2012
	CBGB and related SSIs	ADULT General Hospitals and ASCs	January 1, 2012
	CBGC and related SSIs	ADULT General Hospitals and ASCs	January 1, 2012
	CARD and related SSIs	PEDIATRIC General Hospitals	January 1, 2012
	HTP and related SSIs	PEDIATRIC General Hospitals	January 1, 2012
3 rd (in addition to 2 nd phase)	VHYS and related SSIs	ADULT General Hospitals and ASCs	January 1, 2013
	HYST and related SSIs	ADULT General Hospitals and ASCs	January 1, 2013
	COLO and related SSIs	ADULT General Hospitals and ASCs	January 1, 2013
	PVBY and related SSIs	ADULT General Hospitals and ASCs	January 1, 2013
	CEA and related SSIs	ADULT General Hospitals and ASCs	January 1, 2013
	AAA and related SSIs	ADULT General Hospitals and ASCs	January 1, 2013
	FUSN and related SSIs	PEDIATRIC General Hospitals	January 1, 2013
	RFUSN and related SSIs	PEDIATRIC General Hospitals	January 1, 2013
	LAM and related SSIs	PEDIATRIC General Hospitals	January 1, 2013
	CAUTI	PEDIATRIC and ADULT General Hospital ICUs	July 1, 2013

Publicly Reported Data

TEXAS
Department of State Health Services

Facility Search

Facility Type Hospital Ambulatory Surgical Center Both

Type all or part of the facility name, all or part of the city name, or all or part of the county name in the search boxes and click the Search button below. Text can be entered into one, two, or all three of the search boxes but **must** be entered in at least one of them. The following special keys are not accepted:
~ ` ! @ # \$ % * () + = { } | < > " , . ? \ []

Facility Name Name begins with this text
 Name contains this text

City Name City begins with this text
 City contains this text

County County begins with this text
 County contains this text

[HAI Home](#)
[HAI Data Home](#)
[How to Search](#)
[Find Facility HAI Reports](#)
[Facility Search](#)
[Map Search](#)
[Acronyms](#)
[Definitions](#)
[Understanding the Data](#)
[Frequently Asked Questions](#)
[Contact Us](#)

Facility-Specific Health Care-Associated Infections Report - Brief Version
 Reported by the Texas Department of State Health Services
 Time Period: July - December [Final]2012
 Report current as of: 04/01/2013 03:41 PM

Central Line-Associated Bloodstream Infection (CLABSI) Standardized Infection Ratio (SIR)		
Unit Type	CLABSI SIR	Statistical Interpretation
ICU-OTHER	1.379	About the same as the national experience 🌟🌟🌟

Surgical Site Infections (SSI) Standardized Infection Ratio (SIR)		
Surgery Type	SSI SIR	Statistical Interpretation
Coronary artery bypass graft with both chest and donor site incisions		
Inpatient	1.866	About the same as the national experience 🌟🌟🌟
Coronary artery bypass graft with chest incision only		
Inpatient		Not enough data to calculate SIR 🌟
Hip prosthesis		
Inpatient	0.478	About the same as the national experience 🌟🌟🌟
Knee prosthesis		
Inpatient	0.908	About the same as the national experience 🌟🌟🌟

Facility Comments:

2012 HAI Data Audits

- Facilities selected based on 2012 SIRs
 - Site visits for those facilities with significantly high SIRs
 - As of August 1, 2013, 28 health care facilities have had on-site audits.
- Results:
 - 97% of events were reported accurately. Those responsible for reporting, mostly Infection Preventionists, had a good grasp of requirements and definitions.
 - Audits were an excellent opportunity to review HAI reporting and overall identification with staff responsible for surveillance in hospitals.
 - There is a need to expand the selection criteria for auditing to include health care facilities with zero infections.

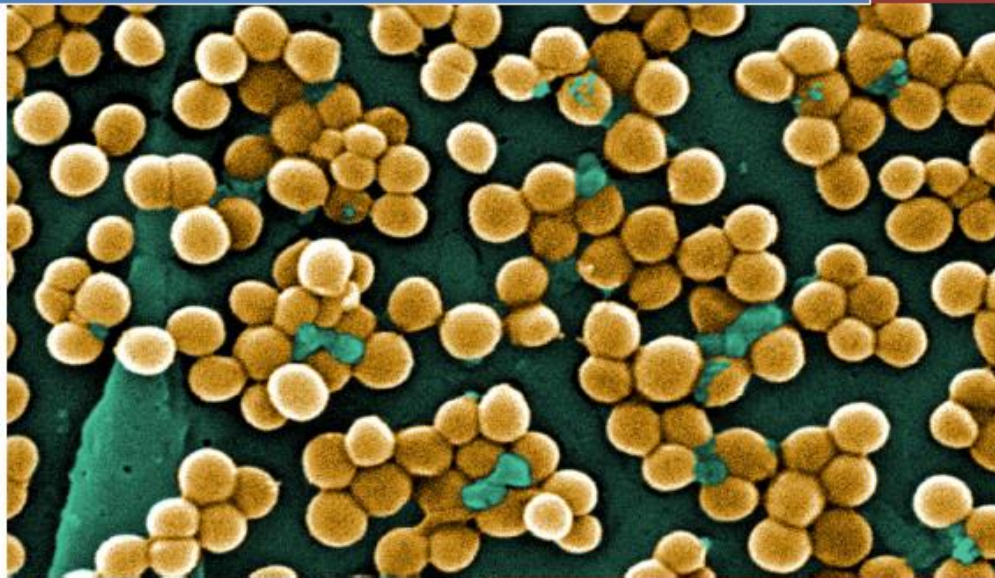
Texas 2012 Annual Report

www.HAITexas.org

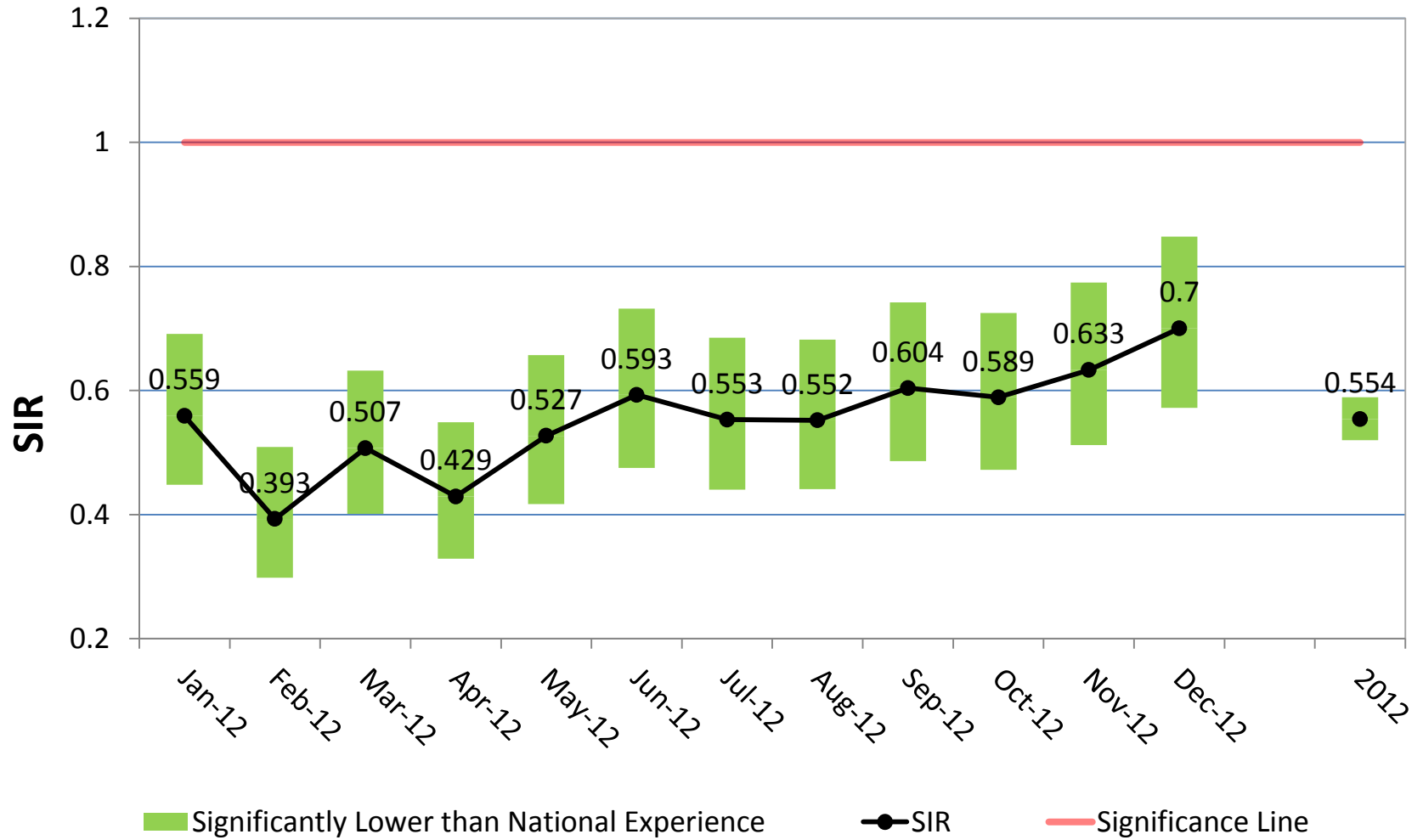


2012

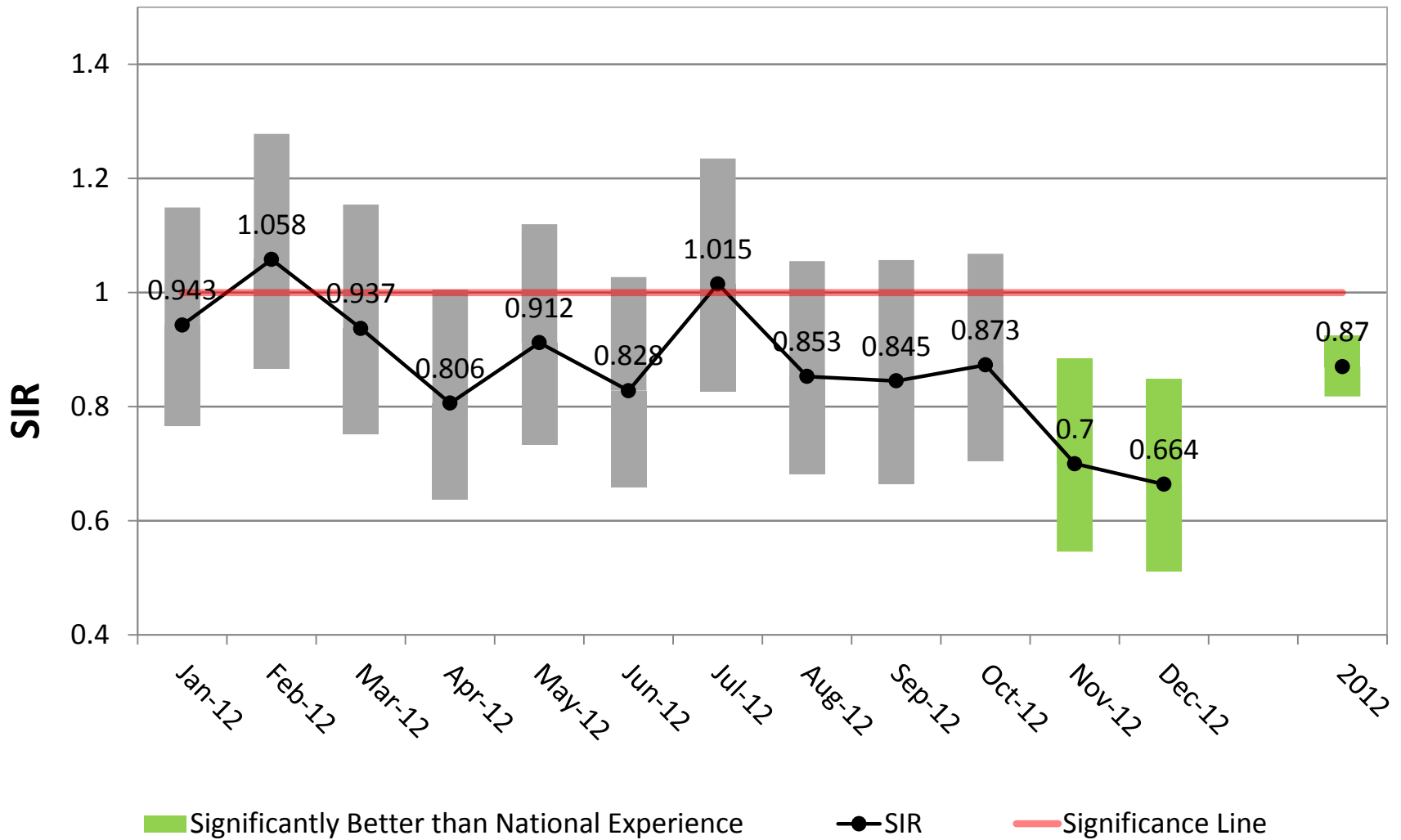
Annual Report on Health Care-Associated Infections



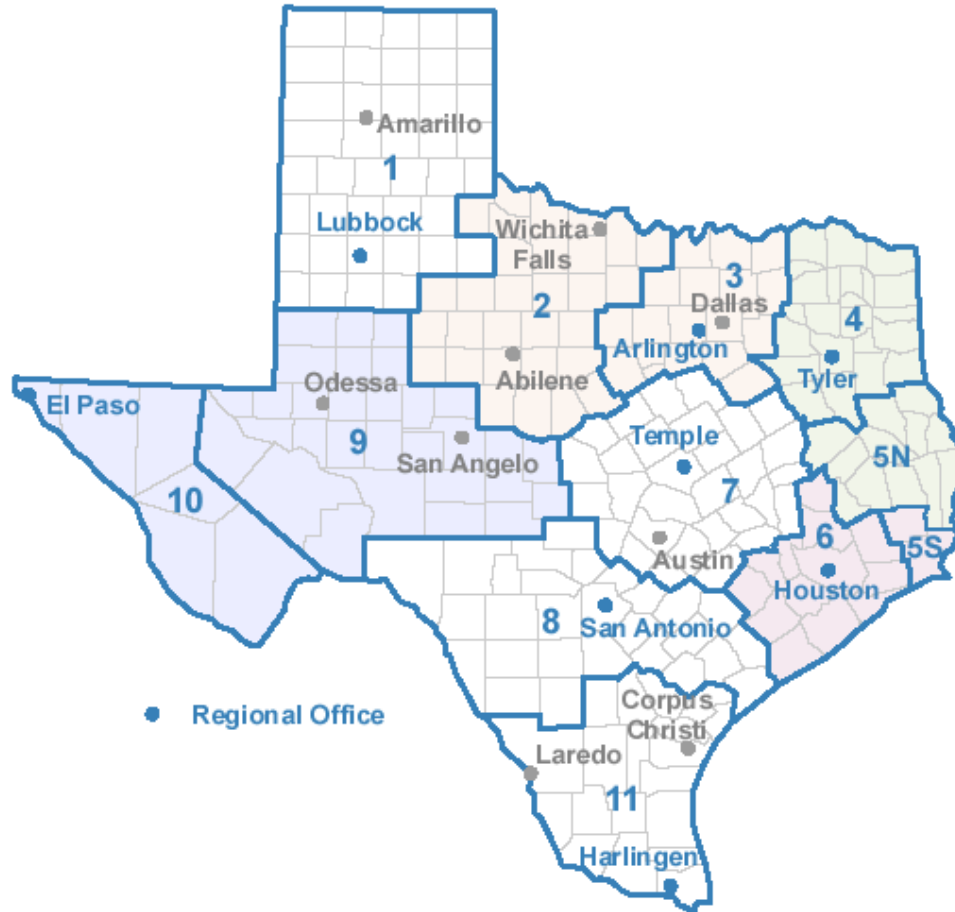
Texas CLABSI SIR for 2012



Texas SSI SIR for 2012



Map of Health Service Regions



CLABSI State Data

CLABSI SIR by Health Service Region						
Health Service Region	Central Line Days	# CLABSIs	Predicted # Infections	SIR	SIR p-value	95% Confidence Interval
HSR 1	41,119	49	88.89	0.551	0	0.408 - 0.729
HSR 2/3	275,593	256	556.69	0.46	0	0.405 - 0.520
HSR 4/5N	34,371	44	59.60	0.738	0.0214	0.536 - 0.991
HSR 6/5S	277,632	302	562.81	0.537	0	0.478 - 0.601
HSR 7	76,924	81	144.43	0.561	0	0.445 - 0.697
HSR 8	94,192	99	184.54	0.536	0	0.436 - 0.653
HSR 9/10	36,094	44	70.01	0.628	0.0006	0.457 - 0.844
HSR 11	69,325	121	131.86	0.918	0.1841	0.761 - 1.096

SSI State Data

Surgical Site Infection SIR by Health Service Region						
Health Service Region	Procedure Count	# of SSIs	Predicted # Infections	SIR	SIR p-value	95% Confidence Interval
HSR 1	4,778	47	66.14	0.711	0.0084	0.519 - 0.950
HSR 2/3	26,745	287	374.60	0.766	0	0.678 - 0.862
HSR 4/5N	6,608	99	90.12	1.099	0.1874	0.889 - 1.343
HSR 6/5S	19,607	224	309.80	0.723	0	0.630 - 0.826
HSR 7	9,436	158	124.69	1.267	0.0023	1.074 - 1.485
HSR 8	8,516	155	119.78	1.294	0.0011	1.095 - 1.519
HSR 9/10	4,154	35	52.61	0.665	0.0065	0.460 - 0.931
HSR 11	5,906	68	96.59	0.704	0.0014	0.544 - 0.896

FAQs



#1 Most Common FAQ



- Password Reset

- Resetting, expired, can't log on, forgot, locked out of TxHSN, etc.

- Link on HAITexas website: How to Reset Your TXHSN Password (On *Resources page*)

- <http://www.dshs.state.tx.us/WorkArea/linkit.aspx?LinkIdentifier=id&ItemID=8589975173>

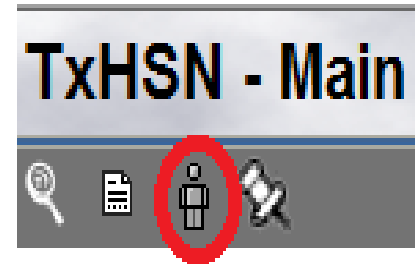
- All functions require completing Security Question

Password Security

- 8 Characters
- At least one number
- At least 3 letters
- At least 1 symbol
- Expires every 60 days
- Do not share your username/password
- **YOU** can reset your password if you forget as long as you set your Security Question!

Password about to expire/Change Password

On main page, click on person icon



- Enter and confirm new password
- Complete Security question, if not done so.
- Save

Supervisor:

Login Credentials

Login Name:

Please fill out password field only if you want to change your password

Password: Confirm Password:

Please fill out only if you want to change the security answer

Security Question:

Security Answer: Confirm Security Answer:

Expired Password

- Enter current password
- Click Login

Welcome to the Texas Health Care Safety Network!

This information system, data, hardware, and software are State of Texas property. The use of this system is restricted to authorized users only; unauthorized access is prohibited. Usage of and all activity on this system are subject to security monitoring and testing. Unauthorized access, use or misuse of this system is a violation of applicable DSHS

If you are unsure of your login information, please contact HAITexas@dshs.state.tx.us

For more information about Texas Reporting, go to www.HAITexas.org

Login

Login Name:

Password:

Application: ▼

[Reset your password](#)

Powered by Maven, a product of Consilience Software (www.consiliencesoftware.com)

- Prompted to enter new password

Instructions

Password change required. Please use the form below to enter new password

Login

Login Name:

Current Password:

New Password:

Confirm Password:

Forgot Password

- If you forgot your password, you can:
 - If you already answered your Security Question when you were logged on in the past, you will be able to use the “Reset my password” link on the TxHSN Login Page
 - Enter Login Name and Email
- If you have not answered your security question, contact HAITexas@dshs.state.tx.us

Other FAQs

- Facility Error Report
 - Log in to NHSN, Correct any Alerts found in your Action Items list.
- Enrolling Facility in NHSN
 - Link on HAITexas website: Getting Started with NHSN and TXHSN
<http://www.dshs.state.tx.us/WorkArea/linkit.aspx?LinkIdentifier=id&ItemID=8589972760>
- Change of Contact
 - Email HAITexas@dshs.texas.gov
 - Sent Change of Contact form, Fax back
 - For NHSN, C-suite letter, fax to 404-929-0131

What comment should I submit?

- Facilities may submit comments to be displayed on the report
- Comments will not be approved if it:
 - Contains inappropriate language
 - Refers to another healthcare facility
 - Refers data from a different reporting time period (other than the current)
 - Are submitted after the comment deadline
 - Comments that are not meant to be publically displayed (e.g. “There are no errors to correct in NHSN for the time period of July- December 2012”)

Comment Examples:

- “Our ICUs consist of 3 units (2 PICUs and 1 CICU) and includes a total of 64 beds. VSHN surgical site infections include 1 superficial incisional and 1 deep incisional infection. CARD infections include 1 organ space infection.”
- “The majority of patients with infections related to coronary bypass surgery were high risk because of obesity. We have refocused our efforts to improve post op wound care to prevent infections in this high risk patient group.”
- “Facility did not perform any of the reportable procedures from July - December 2012 and therefore had no data to report.”
- “The goal at ***** Medical Center is zero infections. When an infection does occur, we take a proactive approach to identify any issues and ensure that all of our processes of care support quality and safety for our patients.”



Three NHSN Facility Groups

- HAITexas
- HAITexas ASC*
- HAITexas LTAC*



For instructions on how to Join a Group,
go to www.HAITexas.org

New Confer Rights Template

Coming Soon

- In November 2013...
 - DSHS to update Confer Rights Templates for HAITexas General Hospitals and HAITexas LTAC groups in NHSN to include:
 - CAUTI reporting in ICUs
 - Addition of Oncology ICU location types
 - **Expect an email with instructions in early November 2013!**

NHSN

- NHSN Version 7.1 released February 16, 2013
 - <http://www.cdc.gov/nhsn/PDFs/Newsletters/Dec-2012.pdf>
- Definition changes
- After January 1, 2013, no longer have to monitor implants
- SAMS



A Look Ahead



TxHSN gets a face lift!

TxHSN - Main

TEXAS Department of State Health Services

TEXAS HEALTH CARE SAFETY NETWORK

Welcome to the Texas Health Care Safety Network!

This information system, data, hardware, and software is restricted to authorized users only; unauthorized access to this system are subject to security monitoring and testing. Unauthorized use of this system is prohibited. If you are unsure of your user name or password, please contact your system administrator.

For more information about HAI reporting, please visit the [Texas HAI Reporting Website](#).

TxHSN - Main

Search Jennifer Vinyard

Recent Records

Record ID	Name	Record Type
No Recent Records		

[More ...](#)

Activity Summary as of 10/21/2013 01:56 PM

Type of Record	# Last Week	# Average Last 4 Weeks	# Last 52 Weeks
Facility	0	0	
Primary Bloodstream Infection	0	0	33
Procedure - Denominator	0	0	721
Surgical Site Infection	0	0	99248
			1541

Resources & Support

- [Log into NHSN](#)
- [Texas HAI Reporting Website](#)
- Texas Department of State Health Services
PO BOX 149347
Mailcode 1960
Austin, Texas 78714-9347
512.458.7676
HAITexas@dshs.state.tx.us

Future Reporting



- Preventable Adverse Events (PAE)
 - Examples: Blood Incompatibility, Stage 3 or 4 Pressure Ulcers, Wrong site, wrong patient, wrong procedure surgical event, patient death due to medication error, etc.
 - Anticipate that all data will be entered into TXHSN
 - Currently working to expand TxHSN to accept PAE reports
 - PAE reporting may start around the beginning of 2015.

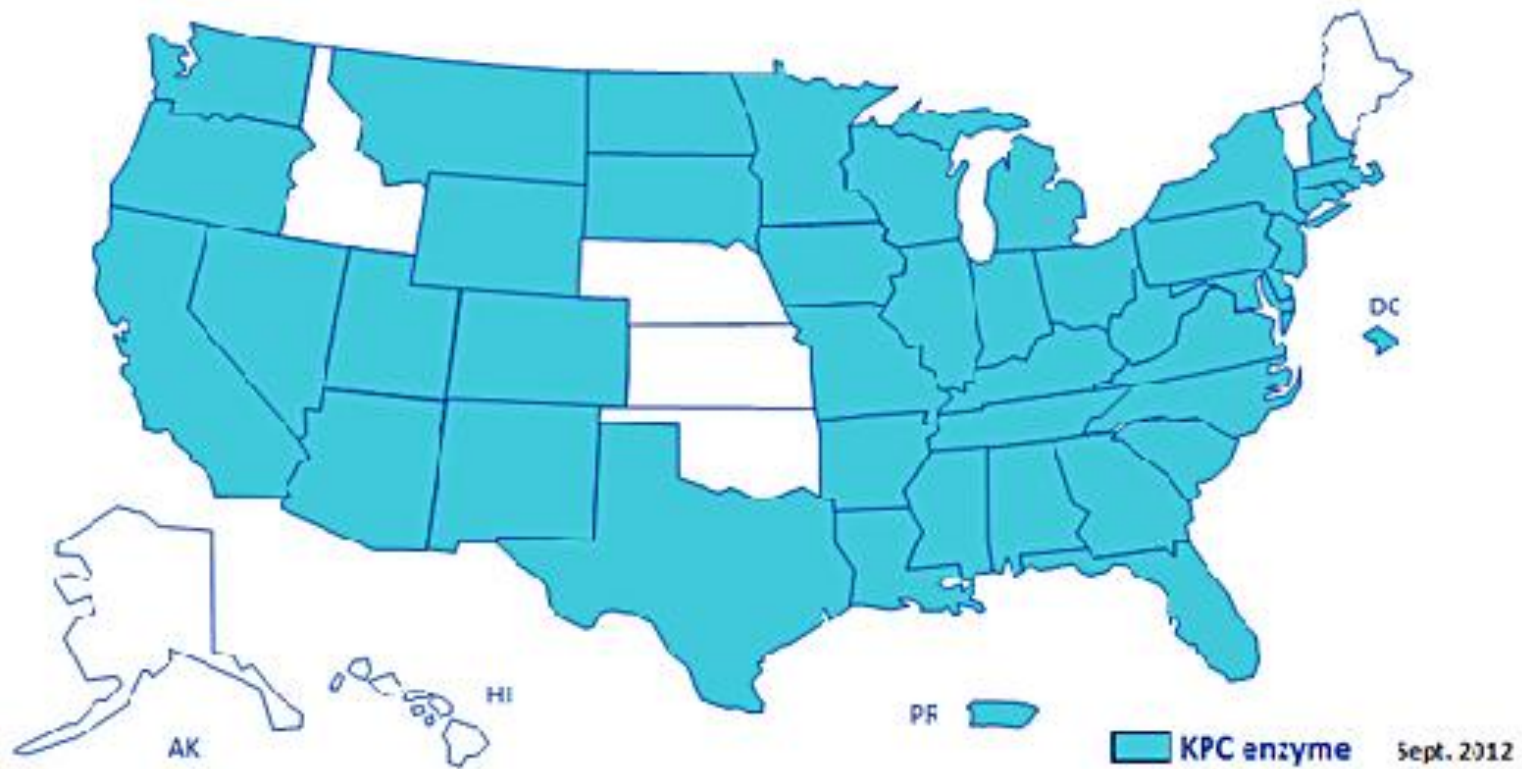
Future Reporting

- Publically displaying number of deaths associated with HAIs in ~2014 (see example below).
- Currently, death info is already being reported to NHSN; therefore, no additional burden.

Central Line-Associated Bloodstream Infection (CLABSI) Standardized Infection Ratio (SIR)						
Unit Type	Observed No. of CLABSI	No. of Central Line Days	Predicted No. of CLABSI	CLABSI SIR	SIR Statistical Interpretation*	No. of CLABSIs that Contributed to the Patient's Death
NICU	0	200	0.579		📉 Not enough data to calculate SIR	0
ICU-OTHER	2	4726	8.506	0.235	🌟🌟🌟 Better than the national experience	2

* NOTE: The SIR Statistical Interpretation only takes into consideration the SIR values. The facility is responsible for providing any additional explanation regarding deaths and if provided, can be found below in the Facility Comments Section.

Carbapenem Resistant *Enterobacteriaceae* (CRE)



Future Reporting

- CRE-*Klebsiella*, CRE-*E.coli* and MDR-*Acinetobacter* added to Notifiable Conditions reporting.
 - Currently accepting voluntary reports
 - Anticipated April 2014 start date.
- For case definitions, see NHSN MDRO protocol.
- **NOTE: This reporting will NOT be done via NHSN/TxHSN.**

CRE Webinar:

<http://texasgio.tmf.org/Networks/HealthcareAssociatedInfections.aspx>

Questions? Contact Neil Pascoe at
Neil.Pascoe@dshs.state.tx.us or 512-776-2358

HAI Texas website

(http://www.dshs.state.tx.us/idcu/health/infection_control/hai/)

TEXAS
Department of State Health Services

Advanced Inicio en español | Text Size: + -

Topics: A B C D E F G H I J K L M N O P Q R S T U V W X Y Z All

Home About Us News I am a... I want to... Resources Find Services

IDCU Home
Infectious Diseases A-C
D-G
H-L
M-Q
R-S
T-Z
IDCU Health Topics
Disease Reporting
Related Rules & Regulations
About IDCU
Related DSHS Sites
Staff Contact List

Contact Us
Infectious Disease Control Unit
Mail Code: 1960
PO BOX 149347 - Austin, TX 78714-9347
1100 West 49th Street, Suite T801
Austin, TX 78714
Phone: 512 776 7676
Fax: (512) 776-7616

Home > [Infectious Disease Control](#) > Health Care-Associated Infections

Health Care-Associated Infections

Health care-associated infections, or HAIs, are infections that people acquire while they are receiving treatment for another condition in a healthcare setting. HAIs can be acquired anywhere healthcare is delivered, including inpatient acute care hospitals, outpatient settings such as ambulatory surgical centers and end-stage renal disease facilities, and long-term care facilities such as nursing homes and rehabilitation centers. HAIs may be caused by any infectious agent, including bacteria, fungi, and viruses, as well as other less common types of pathogens.

In Texas, reporting of selective [health care-associated infections](#) is mandatory.

Facility infection rates are published at [HAI Data](#)

Wherever patient care is provided, adherence to infection prevention guidelines is needed to ensure that all care is safe care. The information on this website is intended to inform patients and healthcare personnel and help move healthcare systems toward elimination of HAIs.

EMAIL

Send your questions to the HAI Team

Last updated January 07, 2013

- HAI Home
- News
- Meetings
- Professional
- Advisory Panel
- Resources
- Data
- Patient Safety

Questions?



Contact Information

- David Rhinehart, MT, CIC
Clinical Specialist, HAI Reporting
- E-mail: HAITexas@dshs.texas.gov
david.rhinehart@dshs.texas.gov
- Phone: 512-776-6878