

Weekly Flu Surveillance Report
Public Health Region 9/10
Week 47- November 21st- November 27th



Texas Department of State Health Services

Disclaimer

Most cases of influenza are not reportable in the state of Texas, thus the data in this report was collected from hospitals, clinics, and schools throughout the region who have agreed to voluntarily submit data.

Definitions

ILI: Influenza-Like Illness. This is an illness that resembles the flu, but has not been confirmed. **Rapid:** These tests are typically done in-house to quickly test for influenza. **PCR:** These tests are generally more precise than rapid tests and are performed at the DSHS state lab and many commercial labs to confirm a case of influenza.

Geographic Spread of Influenza in the Region

No Activity	Sporadic	Local	Regional	Widespread
-------------	----------	-------	-----------------	------------

Geographic spread is determined using the CDC's guidelines for flu activity: <http://www.cdc.gov/flu/weekly/overview.htm>.

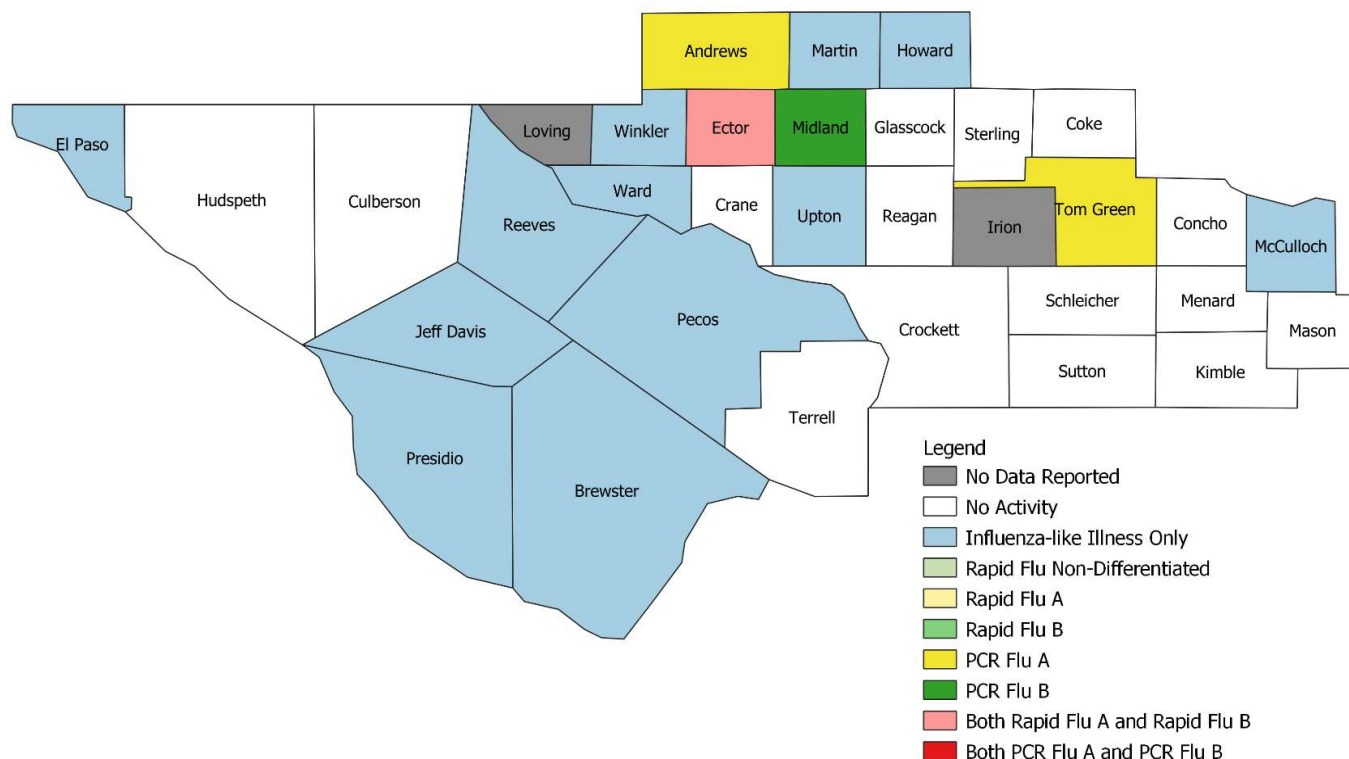
Summary Data

Condition	Week 47	Week 46	Week 45
Number of Counties Reporting (36 total)	→ 34	34	34
Number of Counties Reporting ILI	↓ 17	19	18
Number of Counties Reporting High Levels of ILI*	↓ 6	7	8
Number of Counties Reporting Flu A	↑ 4	1	3
Number of Counties Reporting Flu B	→ 3	3	4
Number of Counties Reporting Flu A & Flu B	↑ 2	1	2

The arrows represent changes from the previous week. A sideways arrow means there was no change in that condition.

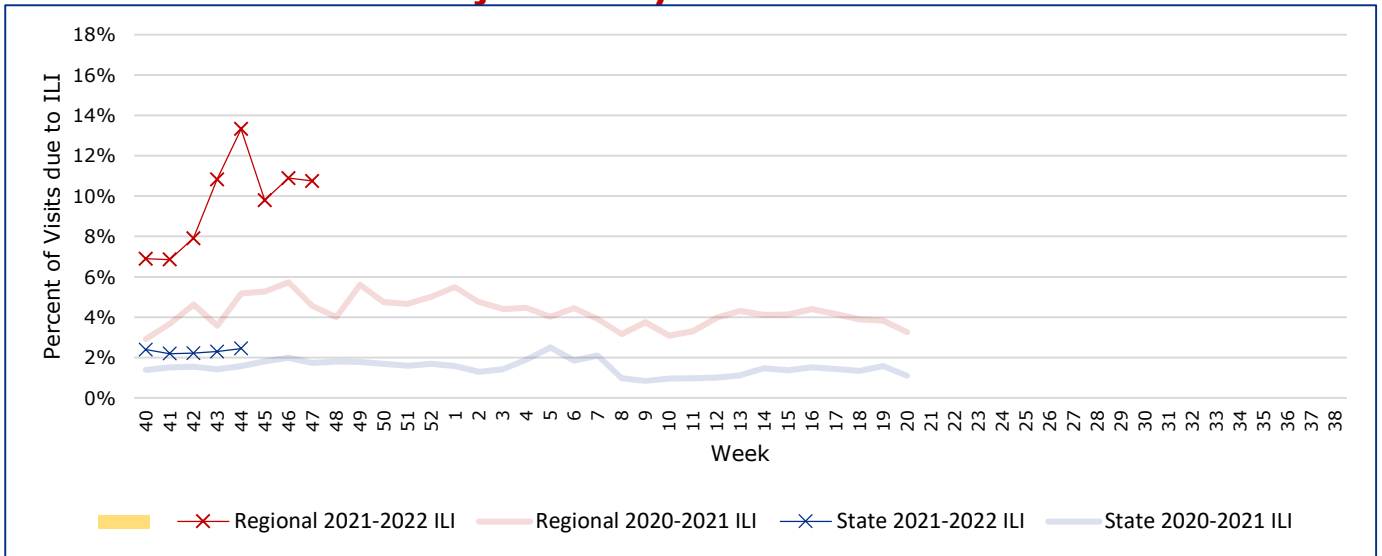
*Counties with total percent of visits due to ILI above 4.0% for the week are considered to have high/abnormal levels.

Map of Regional Flu Activity



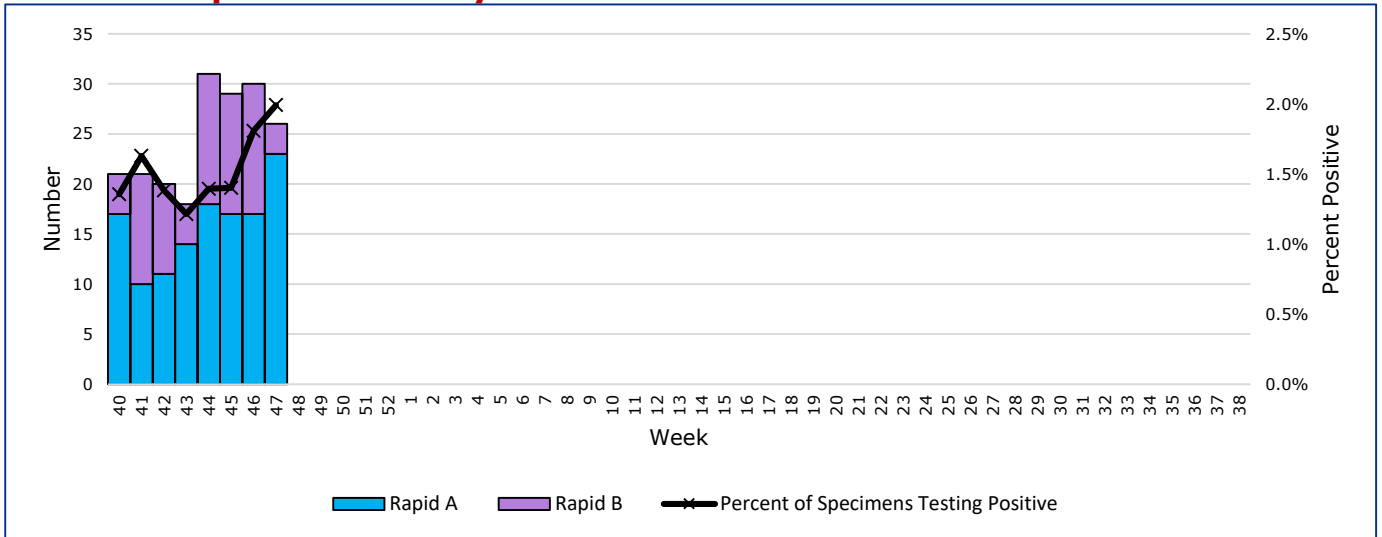
The map above depicts the previous week's reports of flu or influenza-like illness activity in each county. The legend on the bottom right of the map describes the meaning of each color.

Influenza-Like Illness Projections by Week



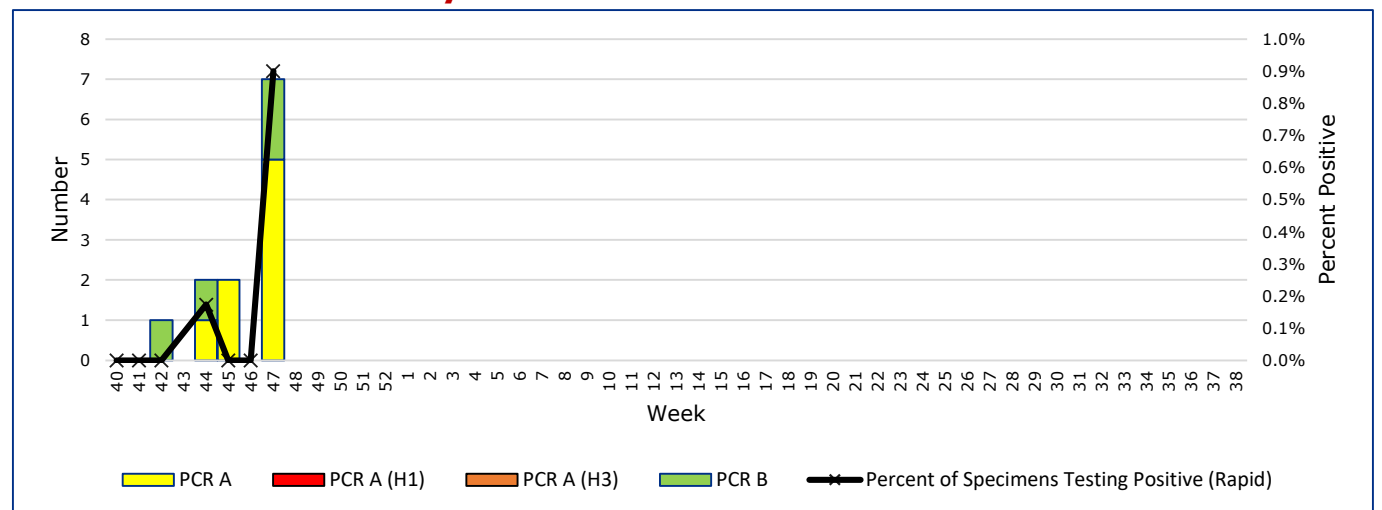
This chart documents the percentage of patient visits that were due to ILI at hospitals and clinics around the region. It compares our region's data with the state's data and also compares to last flu season.

Positive Rapid Flu Tests by Week



This chart documents the number of rapid tests that have come back positive for flu A and flu B each week throughout the region.

Positive PCR Flu Tests by Week



This chart documents the number of PCR tests that have come back positive for flu A and flu B each week throughout the region.

Flu Data by County

County	Week 47				Week 46				Week 45			
	Patient Visits	% with ILI	Flu A	Flu B	Patient Visits	% with ILI	Flu A	Flu B	Patient Visits	% with ILI	Flu A	Flu B
Andrews	322	1%	2	0	499	0%	0	0	491	28%	0	0
Brewster	94	1%	0	0	74	0%	0	0	80	3%	0	0
Coke	6	0%	0	0	6	0%	0	0	6	0%	0	2
Concho	20	0%	0	0	21	0%	0	0	18	0%	0	0
Crane	26	0%	0	0	27	4%	0	0	29	3%	0	0
Crockett	3	0%	0	0	6	0%	0	0	7	0%	0	0
Culberson	4	0%	0	0	7	0%	0	0	12	8%	0	0
Ector	4003	18%	24	3	4857	18%	17	12	4662	17%	13	1
El Paso	8531	4%	0	0	9004	4%	0	0	9084	4%	5	8
Glasscock	5	0%	0	0	7	14%	0	0	7	0%	0	0
Howard	308	4%	0	0	393	2%	0	0	377	2%	0	0
Hudspeth	18	0%	0	0	25	4%	0	0	24	8%	0	0
Irion	0		0	0	1	0%	0	0	0		0	0
Jeff Davis	13	8%	0	0	10	0%	0	0	23	0%	0	0
Kimble	118	0%	0	0	129	1%	0	0	214	0%	0	0
Loving	0		0	0	0		0	0	1	0%	0	0
McCulloch	98	5%	0	0	98	4%	0	0	73	5%	0	0
Martin	39	5%	0	0	491	16%	0	0	44	5%	0	0
Mason	43	0%	0	0	34	6%	0	0	17	0%	0	0
Menard	11	0%	0	0	9	0%	0	0	18	0%	0	0
Midland	2391	30%	1	2	2552	28%	0	0	2628	16%	1	0
Pecos	110	1%	0	0	129	6%	0	0	127	6%	0	0
Presidio	34	3%	0	0	46	0%	0	0	154	1%	0	0
Reagan	13	0%	0	0	15	0%	0	0	22	9%	0	0
Reeves	152	9%	0	0	182	6%	0	0	174	7%	0	0
Schleicher	4	0%	0	0	2	0%	0	0	11	0%	0	0
Sterling	1	0%	0	0	0		0	0	0		0	0
Sutton	20	0%	0	0	18	0%	0	0	17	0%	0	0
Terrell	5	0%	0	0	4	0%	0	0	8	0%	0	0
Tom Green	1174	2%	1	0	1383	1%	0	1	1326	1%	0	1
Upton	89	38%	0	0	142	26%	0	0	135	21%	0	0
Ward	88	1%	0	0	114	4%	0	0	139	1%	0	0
Winkler	271	23%	0	0	411	18%	0	0	300	22%	0	0
Total	18304	10.5%	28	5	20966	10.6%	17	13	20506	9.5%	19	12

Flu-Associated Pediatric Deaths & Outbreaks

No flu-associated pediatric deaths have been reported in PHR 9/10 this flu season. No flu outbreaks have been reported for Week 47.