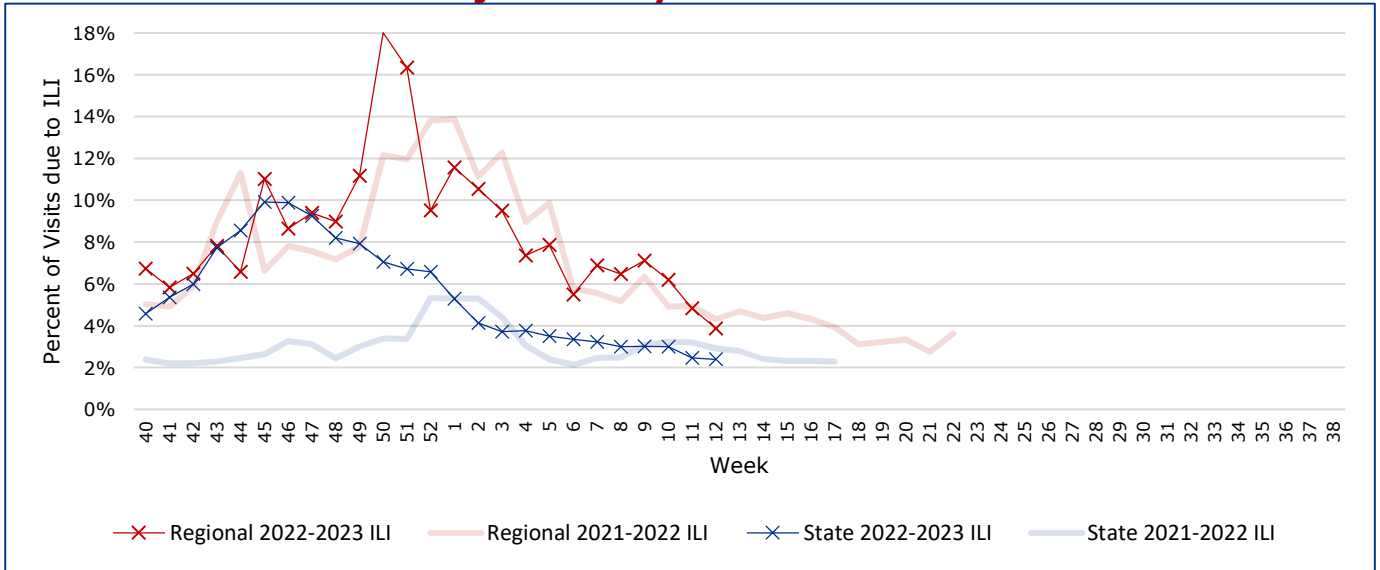


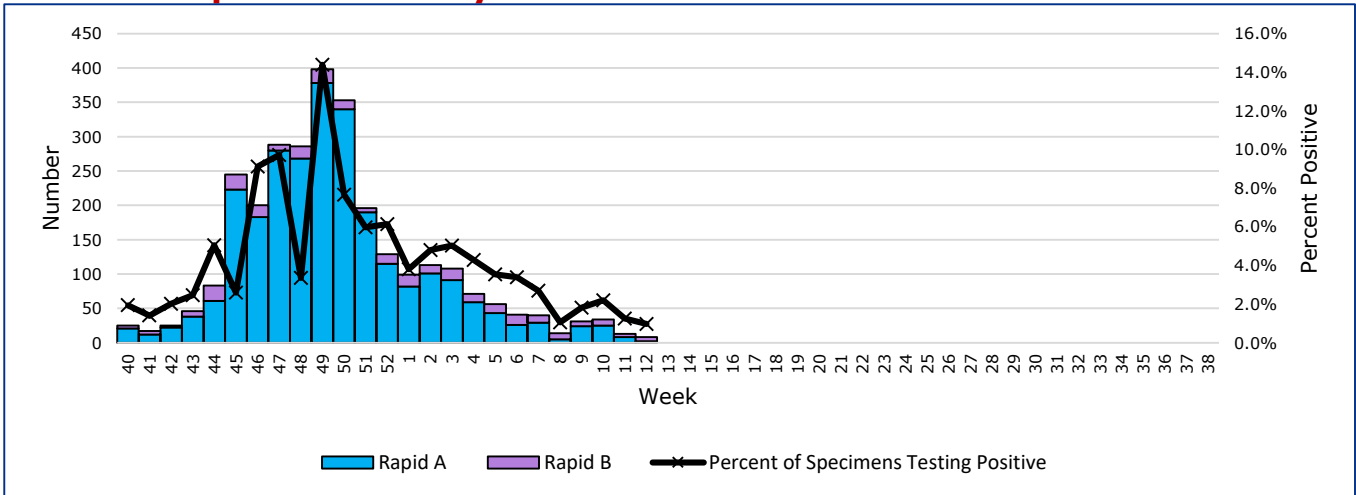


## Influenza-Like Illness Projections by Week



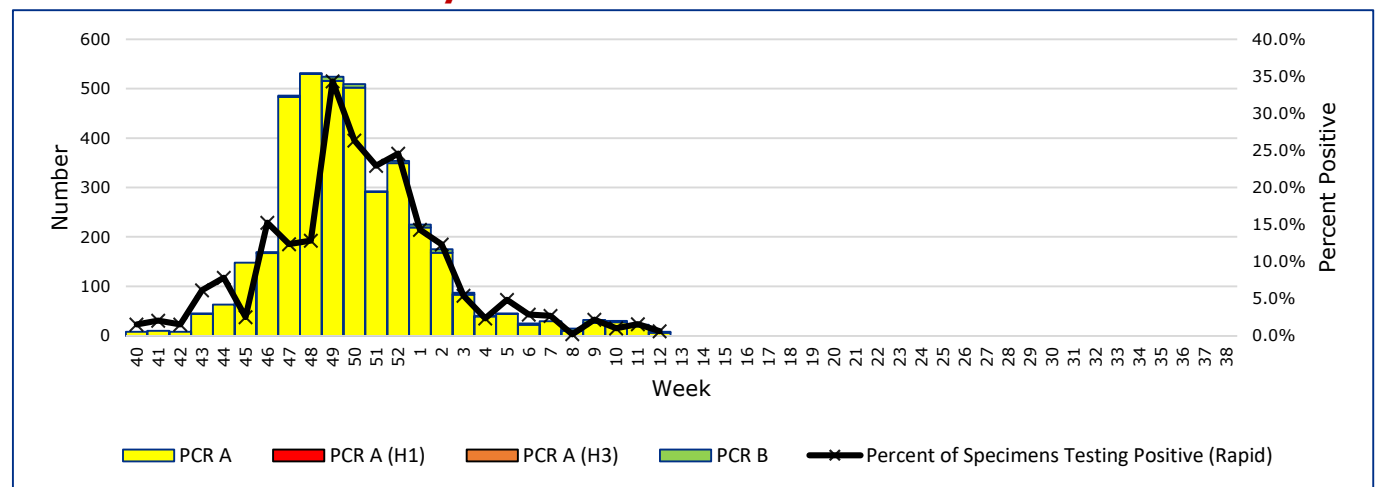
This chart documents the percentage of patient visits that were due to ILI at hospitals and clinics around the region, excluding confirmed COVID cases. It compares our region's data with the state's data and also compares to last flu season.

## Positive Rapid Flu Tests by Week



This chart documents the number of rapid tests that have come back positive for flu A and flu B each week throughout the region.

## Positive PCR Flu Tests by Week

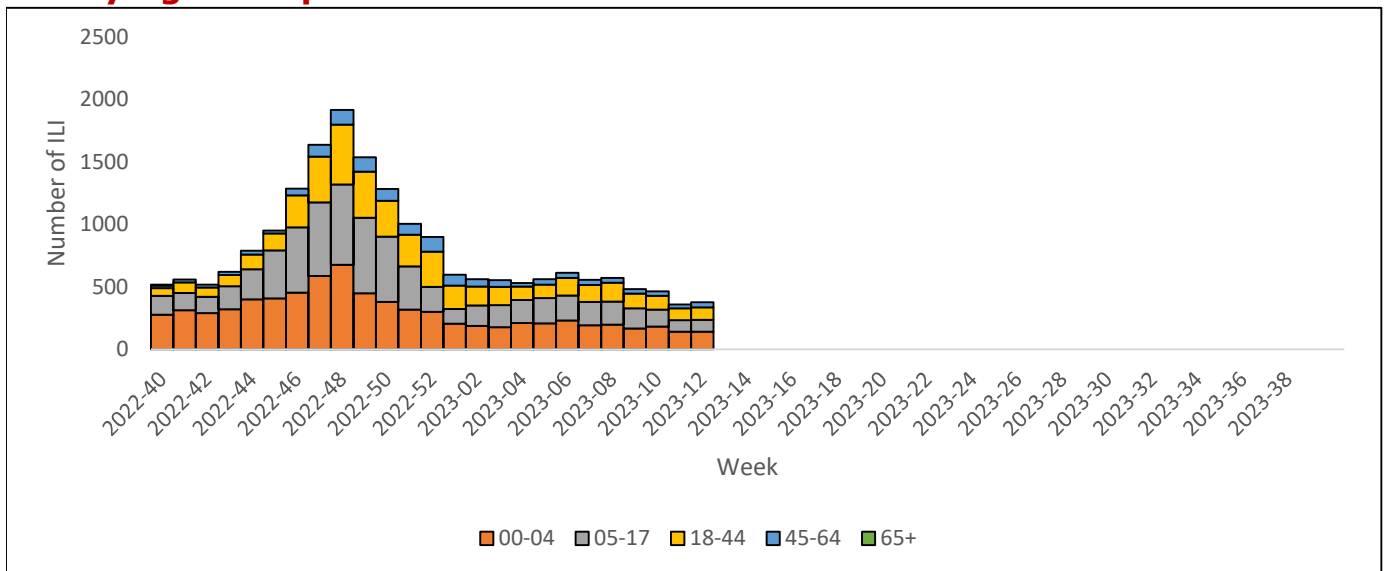


This chart documents the number of PCR tests that have come back positive for flu A and flu B each week throughout the region.

## Flu Data by County

County	Week 11				Week 10				Week 09			
	Patient Visits	% with ILI	Flu A	Flu B	Patient Visits	% with ILI	Flu A	Flu B	Patient Visits	% with ILI	Flu A	Flu B
Andrews	577	9%	2	0	651	10%	0	0	715	10%	4	1
Brewster	71	0%	0	0	95	0%	0	0	103	0%	0	0
Coke	2	0%	0	0	6	0%	0	0	9	0%	0	0
Concho	17	0%	0	0	21	0%	0	0	18	0%	0	0
Crane	23	0%	0	0	35	0%	0	0	53	0%	0	0
Crockett	8	0%	0	0	8	0%	0	0	8	0%	0	0
Culberson	10	0%	0	0	5	0%	0	0	7	0%	0	0
Ector	4983	9%	4	2	6084	10%	15	9	5842	11%	10	5
El Paso	9074	0%	3	1	9869	0%	5	2	9569	0%	2	1
Glasscock	3	0%	0	0	3	0%	0	0	16	6%	0	0
Howard	436	4%	1	0	524	4%	1	0	525	3%	0	0
Hudspeth	20	0%	0	0	24	0%	0	0	20	0%	0	0
Irion	3	0%	0	0	1	0%	0	0	1	0%	0	0
Jeff Davis	8	0%	0	0	10	0%	0	0	26	0%	0	0
Kimble	9	0%	0	0	145	10%	0	0	146	8%	0	0
Loving	0		0	0	0		0	0	5	0%	0	0
McCulloch	31	74%	0	0	31	45%	0	0	57	70%	0	1
Martin	186	10%	0	0	253	9%	0	0	167	7%	0	0
Mason	28	0%	0	0	41	0%	0	0	35	0%	0	0
Menard	6	0%	0	0	12	0%	0	0	11	0%	0	0
Midland	2787	12%	4	1	3100	11%	4	1	2975	13%	4	1
Pecos	783	10%	3	1	982	12%	16	0	889	13%	11	0
Presidio	33	0%	0	0	31	0%	0	0	23	0%	0	0
Reagan	15	0%	0	0	28	0%	0	0	23	0%	0	0
Reeves	128	0%	0	0	168	0%	0	0	140	0%	0	0
Schleicher	3	0%	0	0	5	0%	0	0	4	0%	0	0
Sterling	2	0%	0	0	4	0%	0	0	2	0%	0	0
Sutton	20	0%	0	0	18	0%	0	0	17	0%	0	0
Terrell	6	0%	0	0	7	0%	0	0	7	0%	0	0
Tom Green	1275	2%	7	3	1348	3%	10	0	1338	3%	16	3
Upton	94	9%	3	0	39	0%	0	0	98	13%	2	0
Ward	123	0%	0	0	708	36%	1	0	722	38%	1	0
Winkler	79	0%	0	0	74	1%	0	0	336	13%	0	1
<b>Total</b>	<b>21139</b>	<b>5.2%</b>	<b>27</b>	<b>8</b>	<b>24636</b>	<b>6.6%</b>	<b>52</b>	<b>12</b>	<b>24211</b>	<b>7.5%</b>	<b>50</b>	<b>13</b>

## ILI by Age Group



This chart documents the number of ILI admissions in hospitals around the region by age group from syndromic surveillance data. It excludes ILI with a confirmed COVID-19 discharge diagnosis.

## Flu-Associated Pediatric Deaths & Outbreaks

No flu-associated pediatric deaths have been reported in PHR 9/10 this flu season. In PHR 9/10, no flu outbreaks have been reported for Week 11.

**For a more comprehensive look at respiratory illnesses circulating throughout Texas, please visit: <https://www.dshs.texas.gov/2022-2023-texas-influenza-surveillance-activity> and select the "Current Extended Flu Activity Report"**