

TEXAS INFLUENZA SURVEILLANCE 2010-2011

Lesley Brannan

Influenza Surveillance Coordinator

Infectious Disease Control Unit

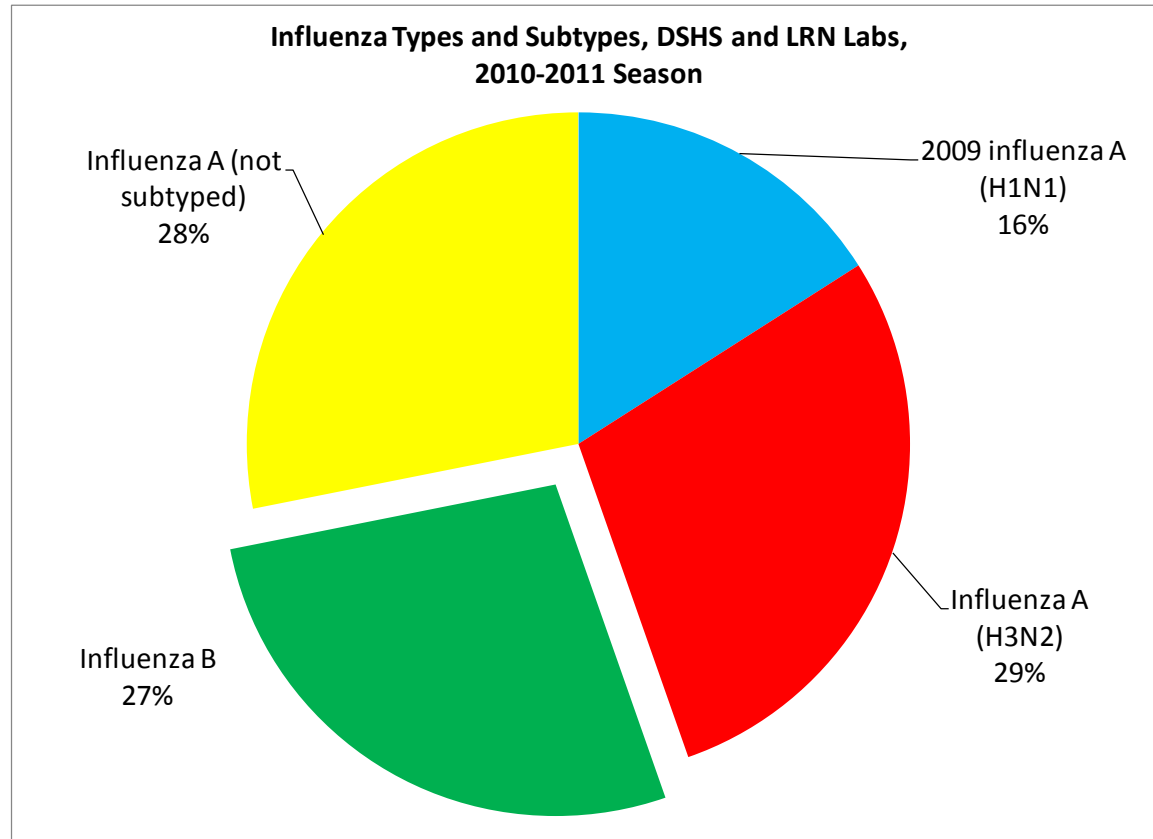
Outline

- Laboratory data
- ILINet
- Institutional outbreaks and school closures
- Influenza-associated mortality
- Possible vaccine “failures”

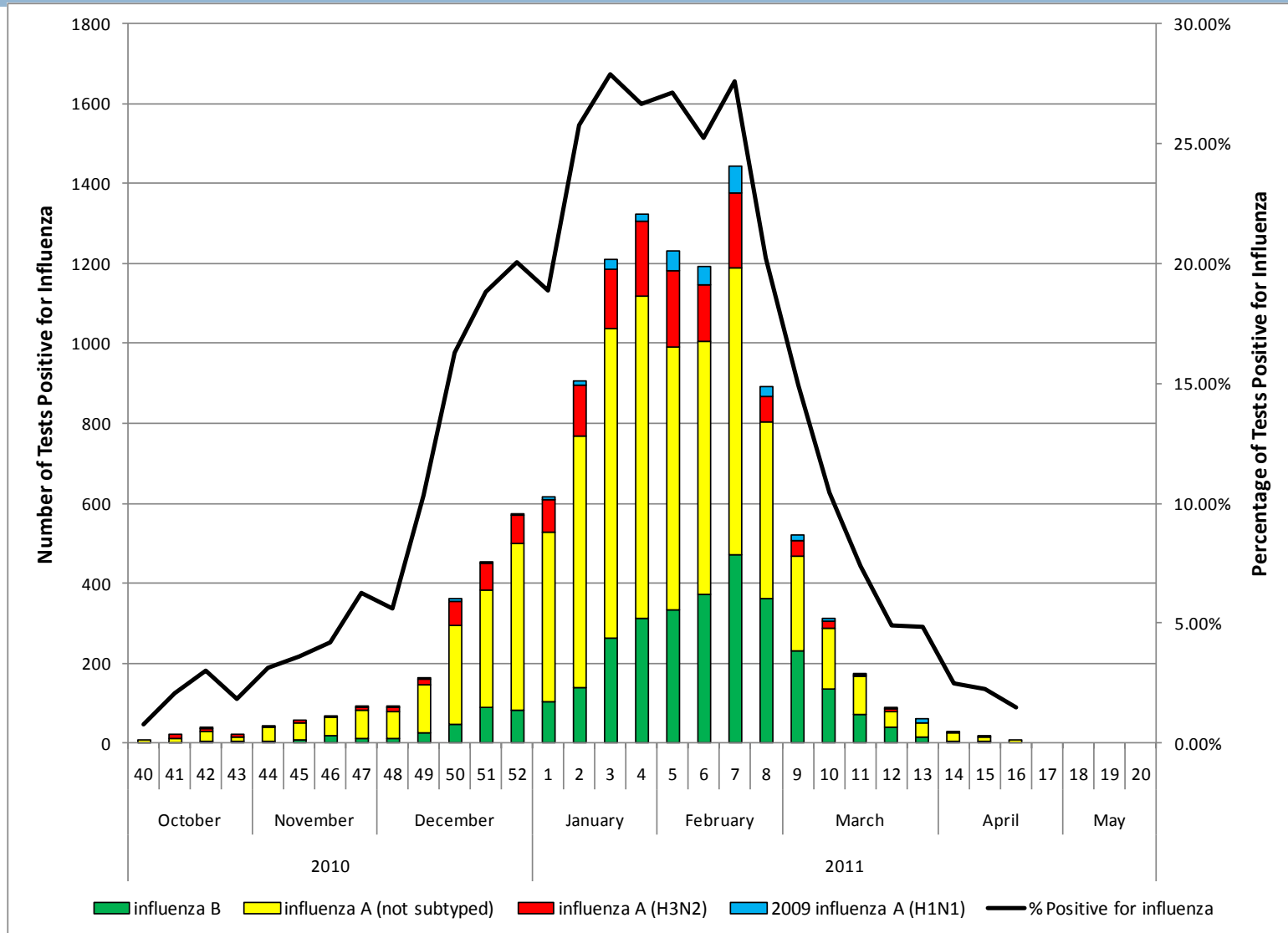
Texas Flu Summary, 2010-2011

- Predominant influenza type: A
 - Subtype: H3N2

- Seasonal peaks
 - ILINet peak: mid February
 - Laboratory peaks:
 - mid to late January
 - mid February



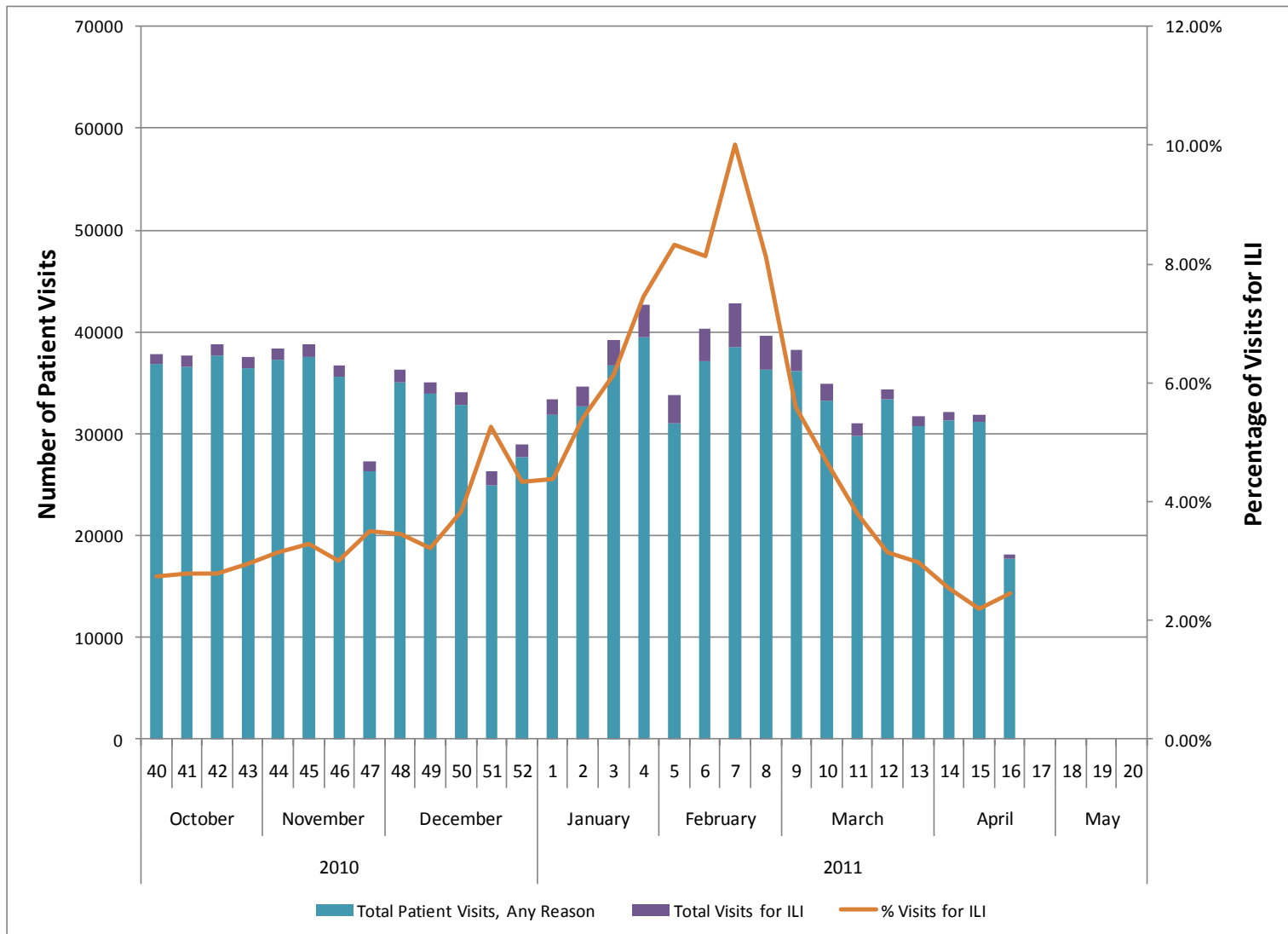
NREVSS Laboratory Data, 2010-11



Additional Testing, 2010-11

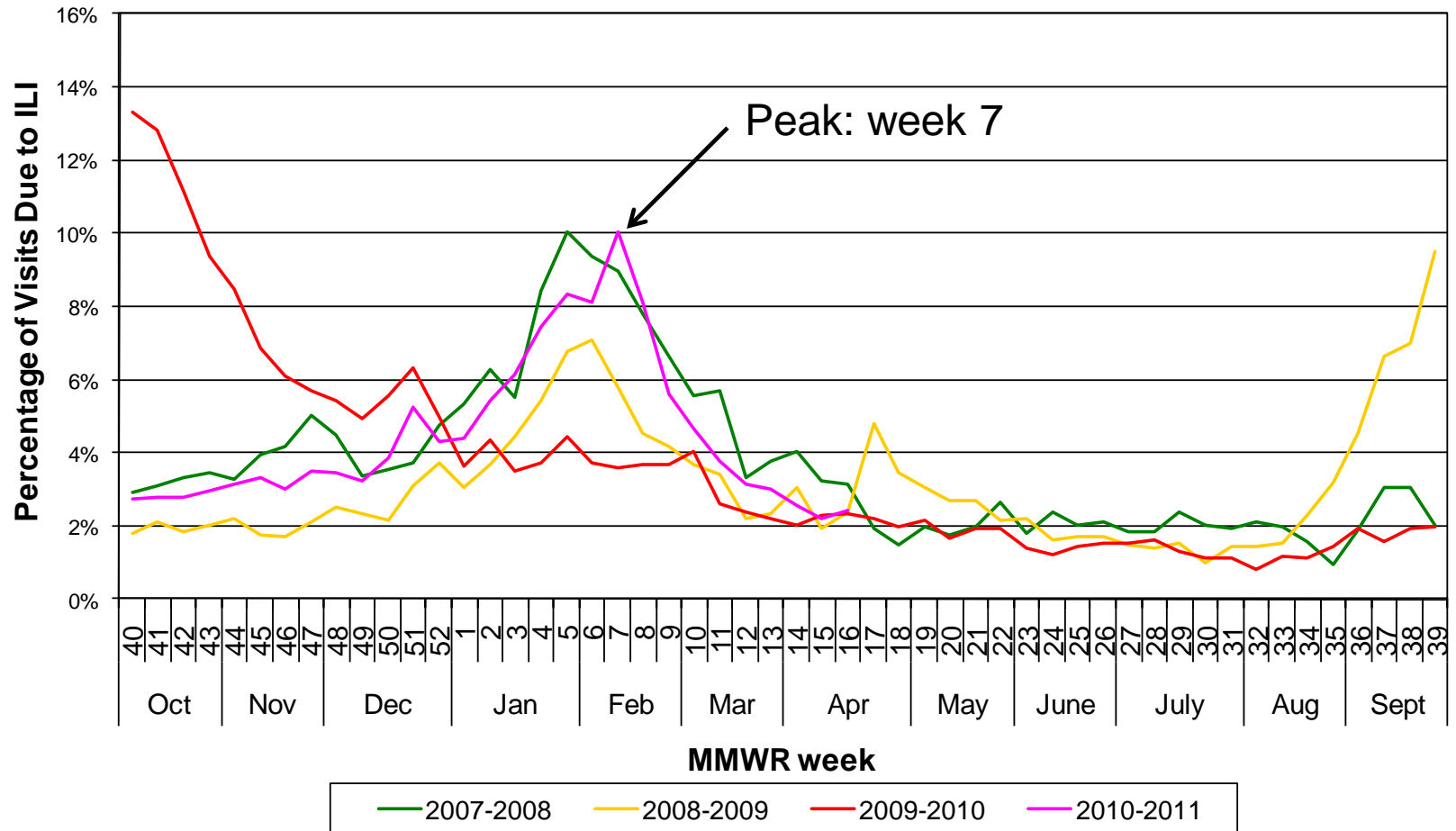
- Antigenic characterization
 - ▣ 58 Texas influenza viruses resulted by CDC
 - 2009 influenza A (H1N1): 12 (100% match)
 - Influenza A (H3N2): 30 (100% match)
 - Influenza B: 14 (100% match)
- Antiviral resistance testing
 - ▣ No reported oseltamivir or zanamivir resistance in Texas isolates

Influenza-Like Illness Visits and Total Patient Visits, Texas ILINet Participants, 2010-2011 Influenza Season



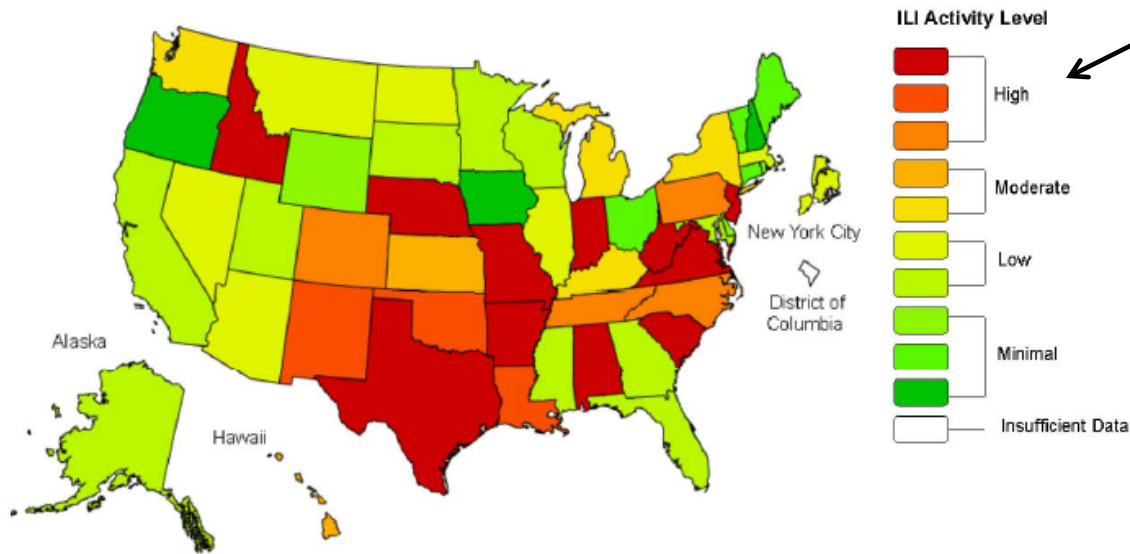
ILINet Data, 2007-2011

Percentage of Visits Due to Influenza-Like Illness
Reported by Texas Participants in ILINet, 2007-2011 Seasons



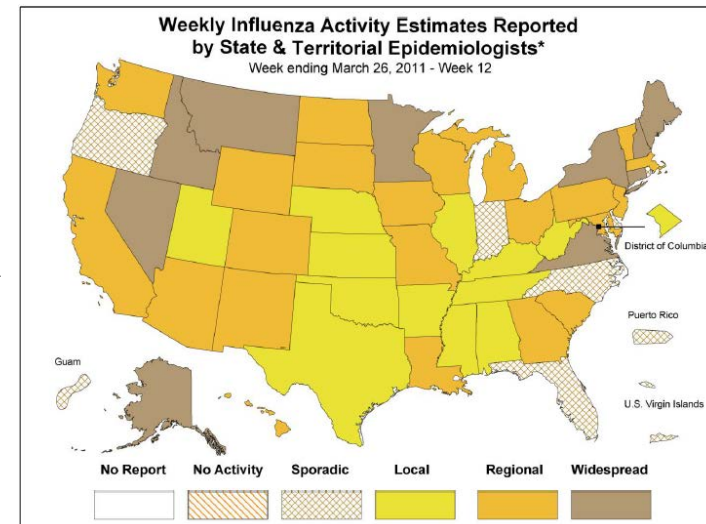
ILINet Activity Level Map

Influenza-Like Illness (ILI) Activity Level Indicator Determined by Data Reported to ILINet
2010-11 Influenza Season Week 8 ending Feb 26, 2011



Indicator of severity

Geographic spread of influenza



Report Sent to ILINet Providers

- Sent each Monday
- Includes reporting reminder
- Includes data by Health Service Region

Institutional Outbreaks

- 11 influenza outbreaks reported
 - Hospital: 1
 - Long-term care: 10
- January – March 2011
- Influenza Type
 - Influenza (type not specified): 2
 - Influenza A: 9
 - Influenza B: 0

School Outbreaks and Closures

- Weeks 42, 49, and 5
- All reported from HSR 4/5N
- Flu A and B
- 1 closure, 4 outbreaks

Influenza-Associated Mortality

- Influenza-Associated Pediatric Mortality
 - ▣ Laboratory-confirmed influenza death in a person under 18 years of age
 - ▣ 12 deaths
 - Age range: 5 months to 17 years
 - 10 Flu A, 2 Flu B
 - Known MRSA or MSSA co-infection: 2
 - Underlying medical condition or co-infection: 9 (75%)
 - Not vaccinated for flu: 5 (63%)
- Influenza-Associated Pregnant/Postpartum Deaths

Possible Vaccine “Failures”

- 100 investigation forms
- Age range: 0-99 years
- 29 vaccine lot numbers, no recalls
- Antigenic characterization: 10 isolates
 - 100% match to circulating strains