

U.S. Outpatient Influenza-Like Illness Surveillance Network (ILINet)

October 3, 2010 – October 1, 2011



Enrolled Providers

- October 1, 2010 started off with 177 enrolled health care providers.
- Inactive between October 1 until present = 43.
- Reason for Inactivity
 - 80% stated they were under staffed.
 - 10% either faxed or left phone messages stating they would no longer be able to participate.
 - 5% Relocated or moved to another facility.
 - 5% Never responded to calls, letters or emails.
- As of May 2, 2011 providers currently enrolled = 134.

Number of Providers Enrolled in HSR's

(May 2011 ILINet Providers per 100,000 Population)

PHR	Providers	Rate	
• HSR 1	11	1.31	• Texas Summary
• HSR 2/3	37	0.51	– Total providers - 134
• HSR 4/5N	11	0.74	– ILINet providers per 100,000 population - .53
• HSR 5S/6	25	0.39	
• HSR 7	9	0.31	
• HSR 8	7	0.27	
• HSR 9/10	17	1.22	– Reporting rate - 52%
• HSR 11	17	0.81	

ILINet State Survey - October 2010

- **Florida** - Population - 18,801,310
Enrolled - 170 enrolled
Reporting rate - 90%
ILINet Providers per 100,000 population -.91
- **New York** - Population - 19,378,102
Enrolled - 123
Reporting rate - 63%
ILINet Providers per 100,000 population - .62
- **Maryland** - Population - 5,773,552
Enrolled - 40 (April 5, 2011)
Reporting rate - 69%
ILINet Providers per 100,000 population - .70

Incentives for ILINet Providers

- **Florida**

- Offers to input ILI.
- County epidemiologist are very hands on & involved in recruiting.
- Flu testing supplies.
- At the end of the season along with the certificates, providers are sent pin lights and stethoscope pads.
- Florida does not send weekly reminders.

Each year Florida is recognized at a national level for the dedication and hard work of ILINet.

Incentives for ILINet Providers

- **New York**

- MMWR & EID subscriptions
- Program updates
 - *At least 2 summary reports throughout the year and at the end of the year.*
- Same group enrollment
- Flu testing supplies
- For larger groups offer to enter ILI.
- Work with various organizations to have ILINet program published in their monthly newsletter and/or have the recruitment poster put on their website.

Incentives for ILINet Providers

- **Maryland**
 - EID
 - Weekly Flu Report
 - CME credits for teleconference participation
 - Drawing for breakfast for providers office
 - Future Incentives

Maryland Continued

- Other ways of collecting ILI data
 - ESSENCE “Electronic Surveillance System for the Early Notification of Community-based Epidemics”
 - Web-based syndromic surveillance system designed for early detection of disease outbreaks, suspicious patterns of illness, and public emergencies.
 - Essence incorporates data from multiple data sources
 - Emergency department - chief complaints (hospital logs)
 - Laboratories
 - Urgent Care Facilities

Maryland Continued

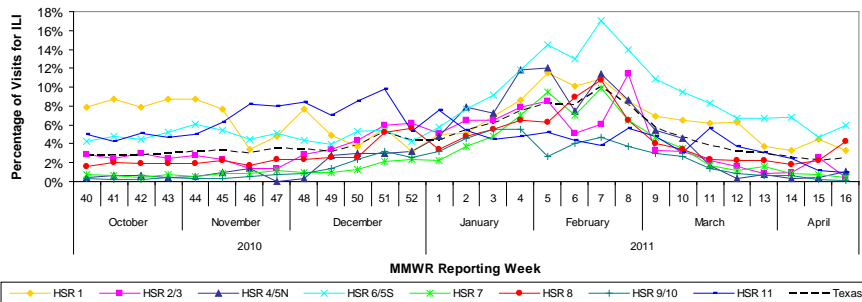
- Maryland Resident Flu Tracking
 - Weekly survey of regular people from all over Maryland.
 - *They answer question with regards to any:*
 - Respiratory symptoms they might have experienced during the previous week.
 - If they did experience fever, cough, and/or sore throat.
 - If they missed school or not.
 - If they saw a health care provider.
 - The survey takes about 3 minutes

What's New?

Weekly Summary Update

- Inform of flu activity
- Incentive
- Reminder

Percentage of Visits for Influenza-Like Illness (ILI) by Health Service Region (HSR) Reported by ILINet Providers in Texas 2010-2011 Influenza Season



ILINET PROVIDER WEEKLY UPDATE MONDAY, APRIL 18, 2011

KEY POINTS FOR WEEK 14

Circulating Influenza Week 14

What's in this issue

Out Breaks / Flu Deaths

School Closures

Circulating Flu

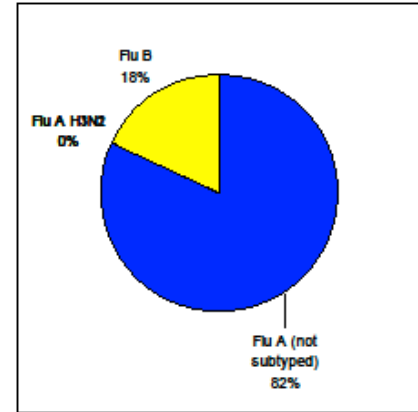
% of Patient Visits

Reporting Summary

Reporting Reminder

OUTBREAKS - FLU

- The geographic distribution of influenza for Texas was "sporadic" and the ILINet Activity Level indicator was "minimal".
- No influenza-associated pediatric deaths were reported for week 14. No institutional outbreaks or school closures were reported.
- The full flu report is posted on our website each Friday afternoon at <http://www.dshs.state.tx.us/idcu/disease/influenza/surveillance/2011/>



Percentage of Visits for Influenza-Like Illness in Texas Reported For Week 14

Week	# Reporters	Age 0-4	Age 5-24	Age 25-49	Age 50-84	Age 85+	Total ILI	Total Patients	% ILI
14	56	229	272	90	27	11	629	21085	2.99%

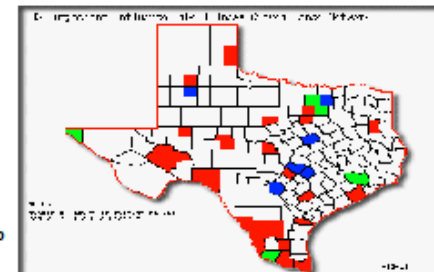
The percentage of visits for influenza-like illness as reported by ILINet providers in Texas was below state baseline (8.09%) but above the US regional baseline (4.9%)

Summary of ILINet Provider Reporting

Number of providers enrolled in ILINet	Number of providers who reported for week 14 as of noon on 4/12/2011
134	43

Reminder:

- ILI data are submitted by noon each Tuesday. Data may be faxed to 1-888-232-1322.
- You may also submit ILI data by Internet: <http://www2a.cdc.gov/ilinet>
- Report the total number of patients seen weekly even if there are no patients seen with ILI.



Counties with Providers Submitting ILI

- Red - one provider submitting ILI
- Blue - two providers submitting ILI
- Green - > 2 providers submitting ILI

Texas Department of State Health Services

Irene Brown
ILINet Coordinator

Infectious Disease Control Unit
1100 West 49th Street
Austin, Texas 78756

Phone (512) 458-7111, Ext. 6878
Fax (512) 458-7616
irene.brown@dshs.state.tx.us

