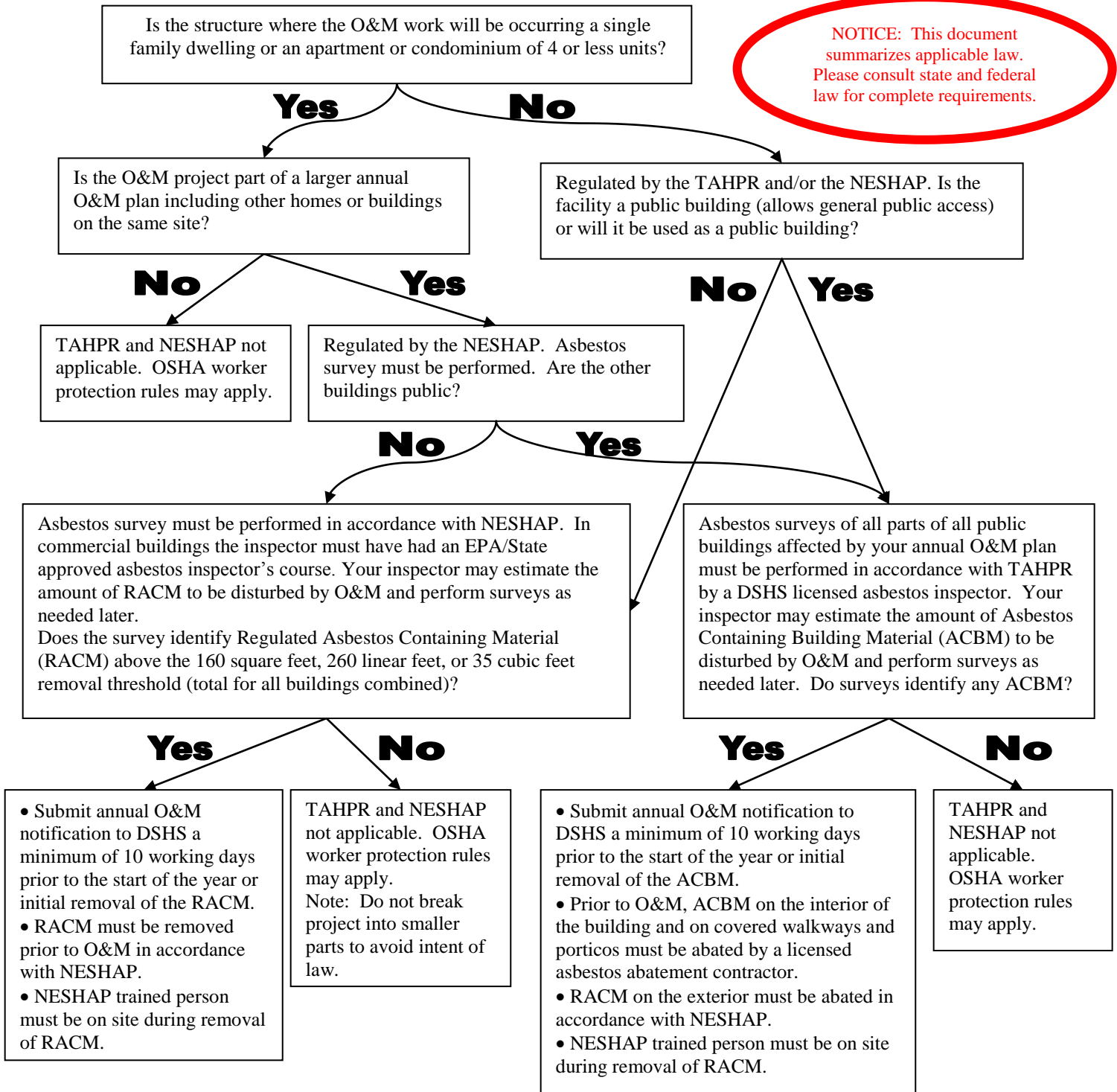




Texas Department of State Health Services
Asbestos Survey and Notifications Requirements
for Operations and Maintenance Work
Decision Tree Flowchart



NOTICE: This document summarizes applicable law. Please consult state and federal law for complete requirements.



Note: Any single project disturbing greater than 160sf, 260ft, or 35cf must be notified separate from the O&M notice.

- Key:**
 EPA – Environmental Protection Agency
 DSHS – Department of State Health Services
 TAHPR – Texas Asbestos Health Protection Rules
 NESHAP – National Emission Standards for Hazardous Air Pollutants
 OSHA – Occupational Health and Safety Administration
 RACM – Regulated Asbestos Containing Material
 ACBM – Asbestos Containing Building Materials