

Core Surveillance Data

Jonathon Poe, MSSW

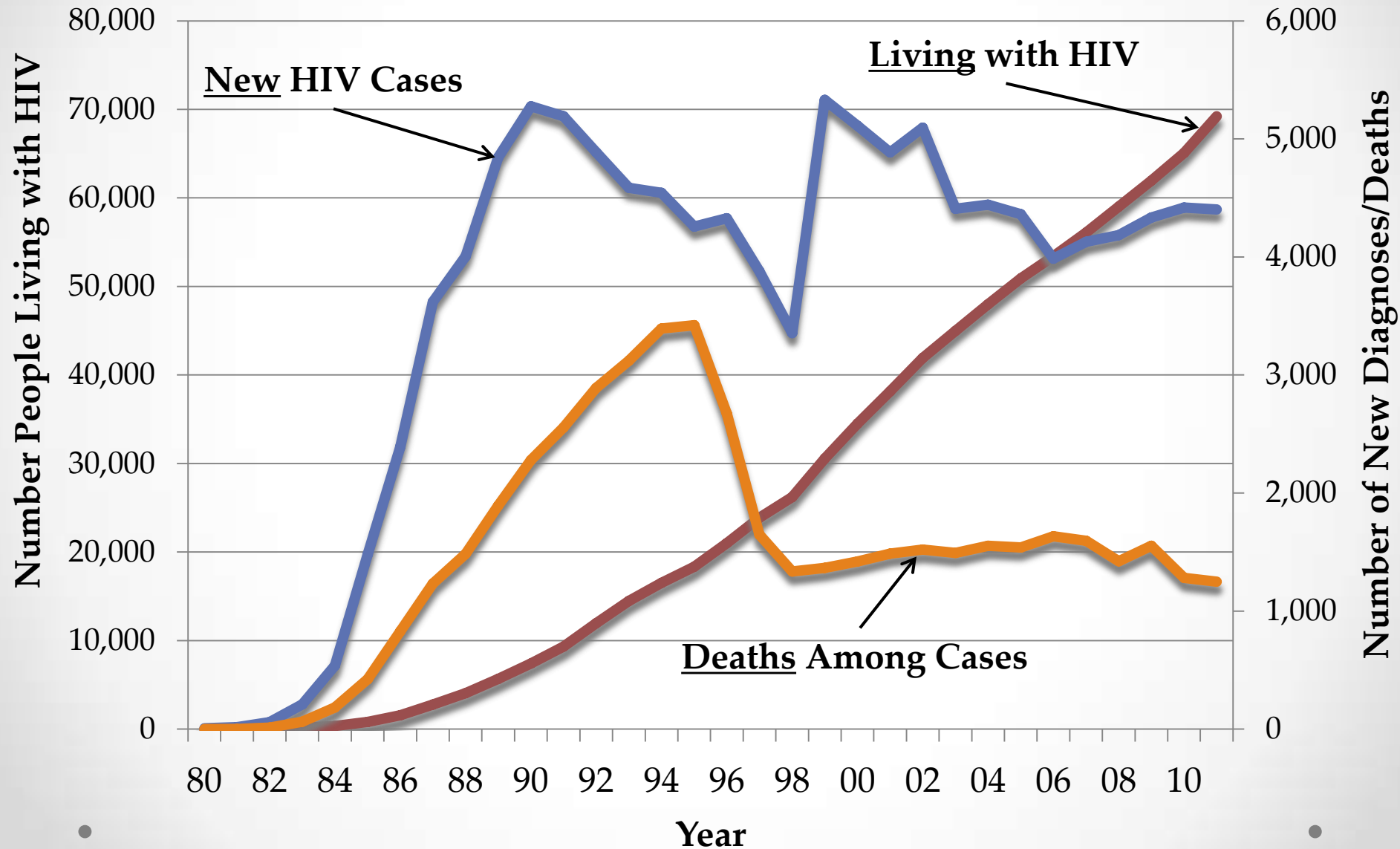
Epidemiology and Supplemental Projects Group Manager
TB/HIV/STD Epidemiology and Surveillance Branch



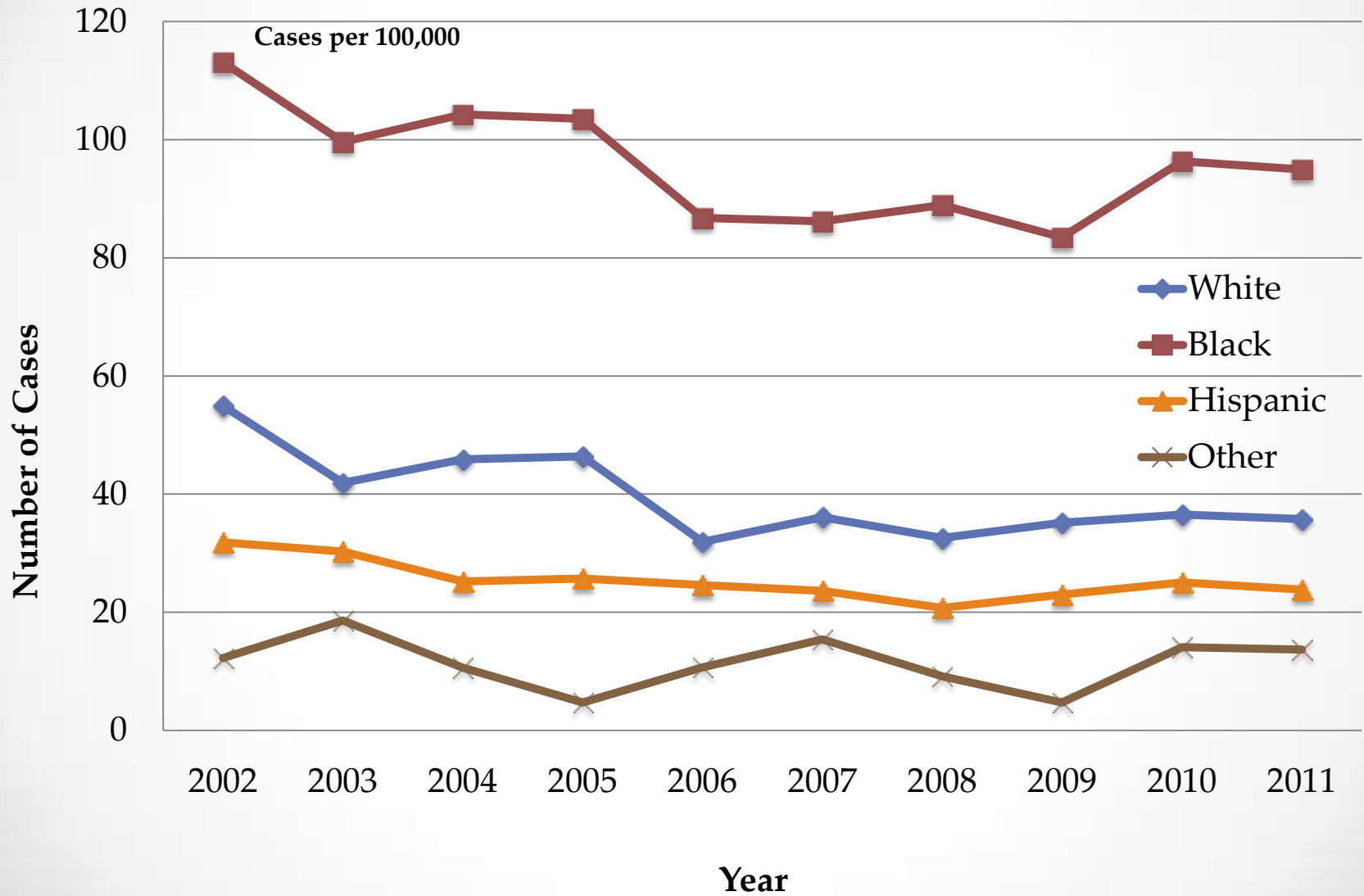
HIV Surveillance Tools

- Core HIV surveillance is routinely performed in all states (i.e., reportable condition by law)
- Supplemental HIV surveillance: projects that seek additional information related to HIV risks and transmission
 - National HIV Behavioral Surveillance (NHBS)
 - Medical Monitoring Project (MMP)

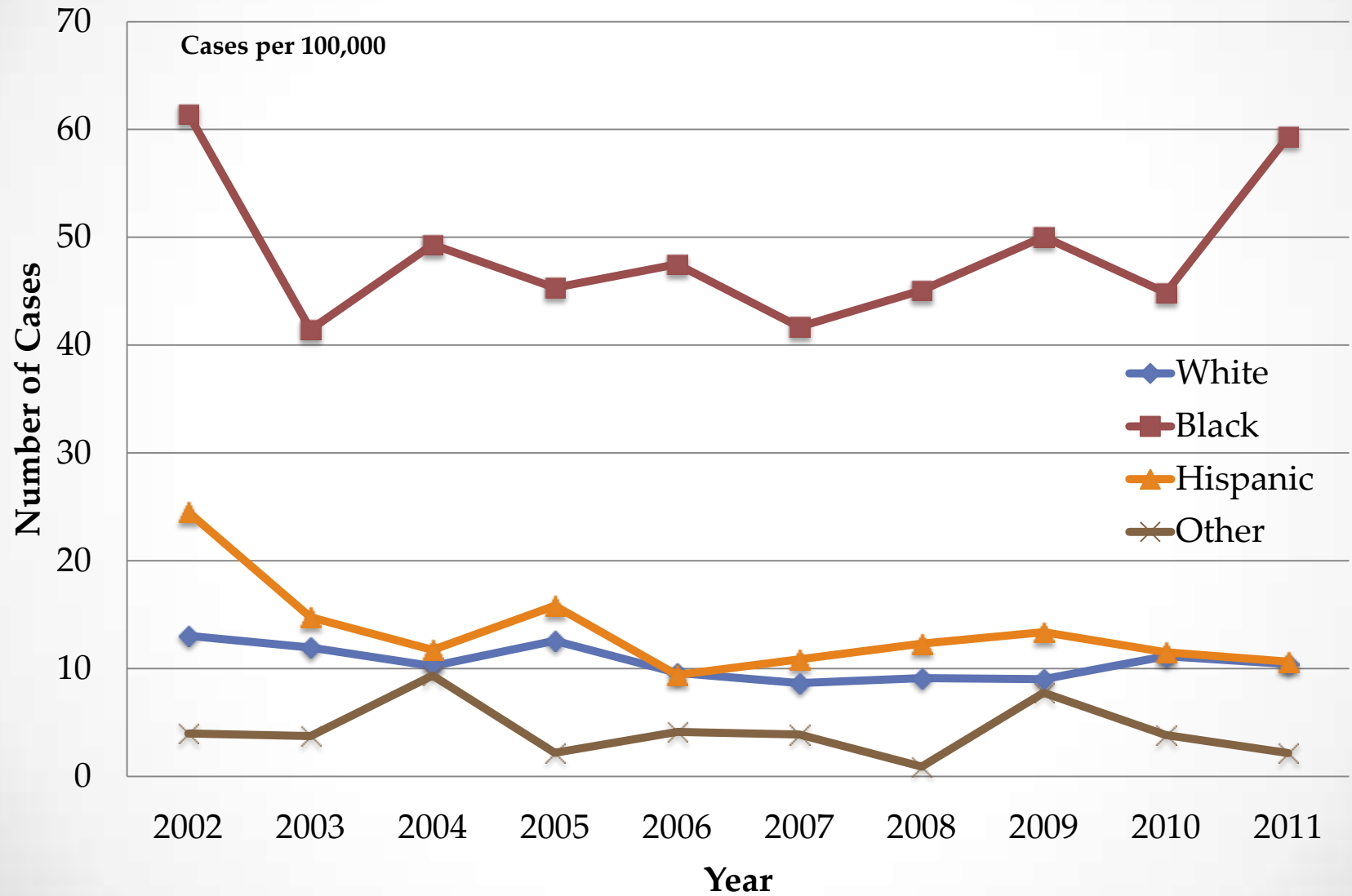
Newly Diagnosed, Deaths and PLWH, Texas



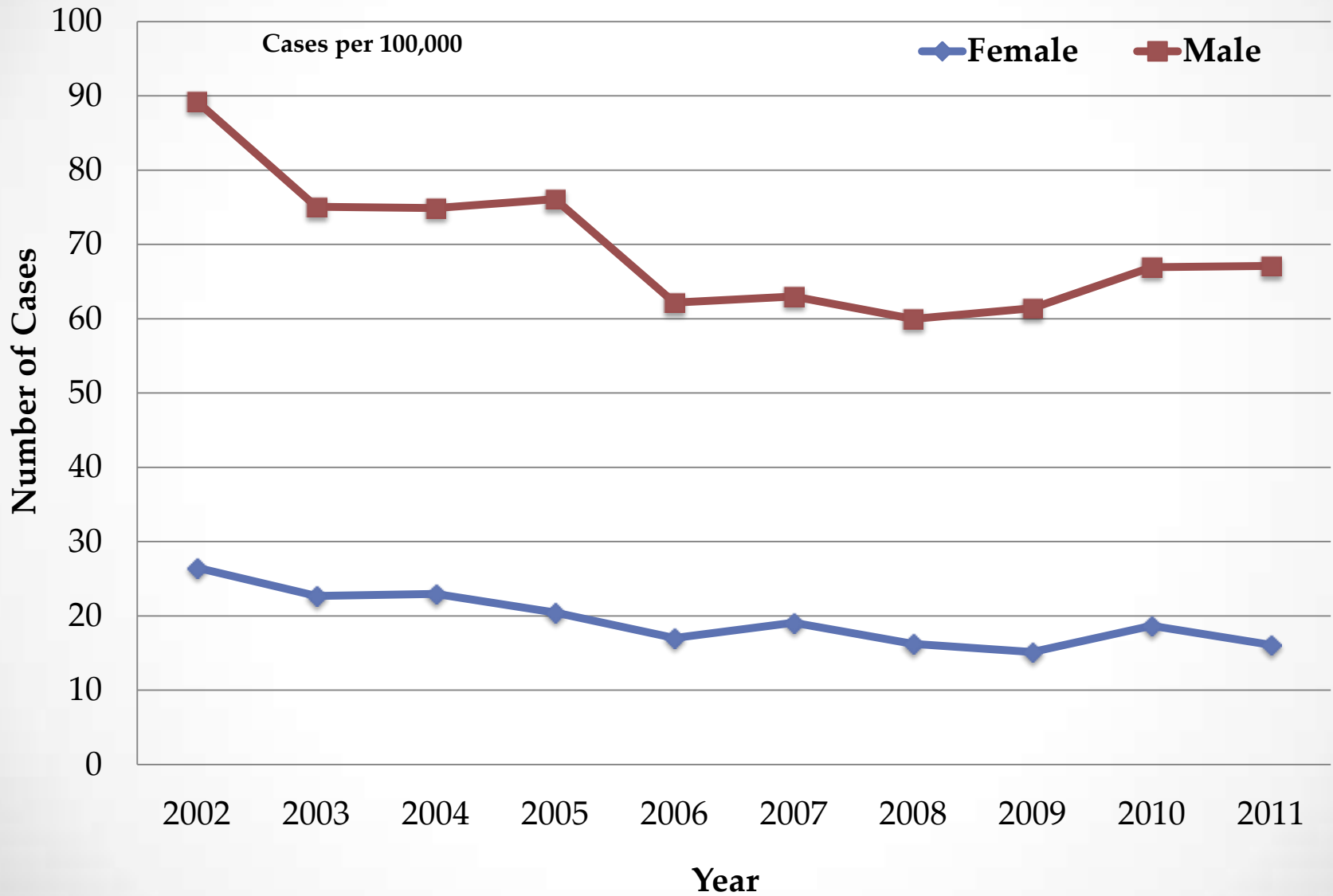
New Diagnosis Rates by Race/Ethnicity, Dallas EMA



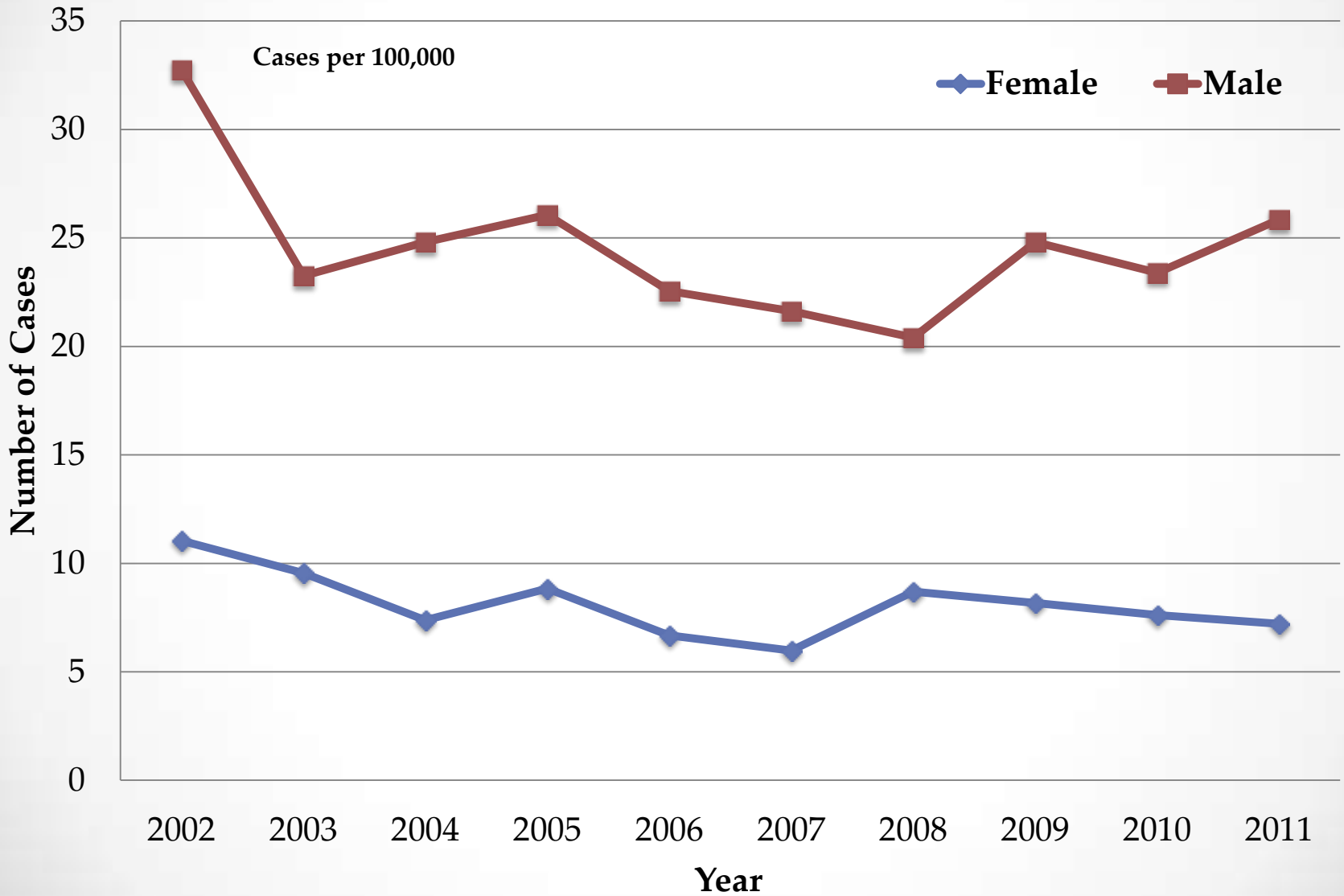
New Diagnosis Rates by Race/Ethnicity, Fort Worth TGA



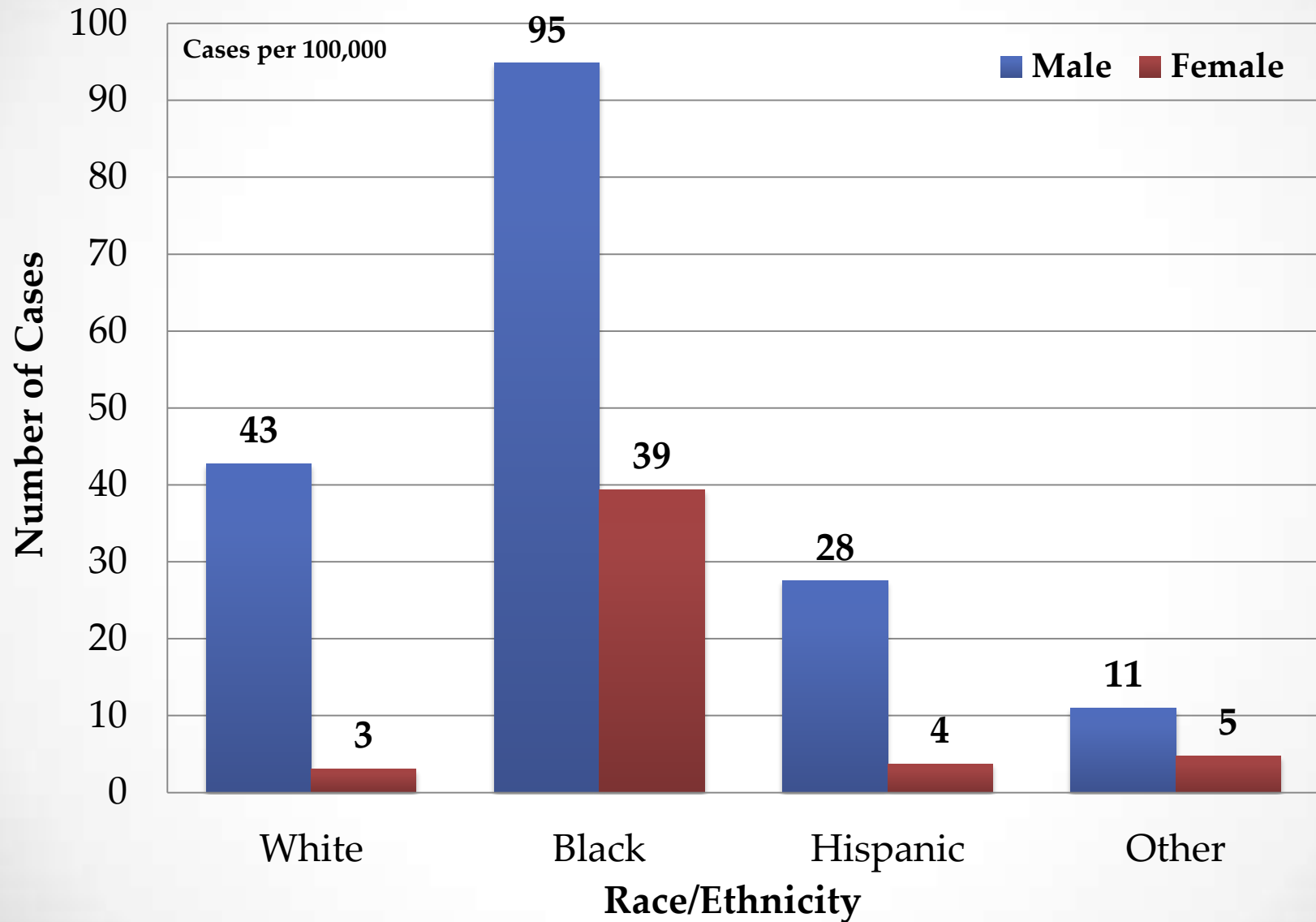
New Diagnosis Rates by Sex, Dallas EMA



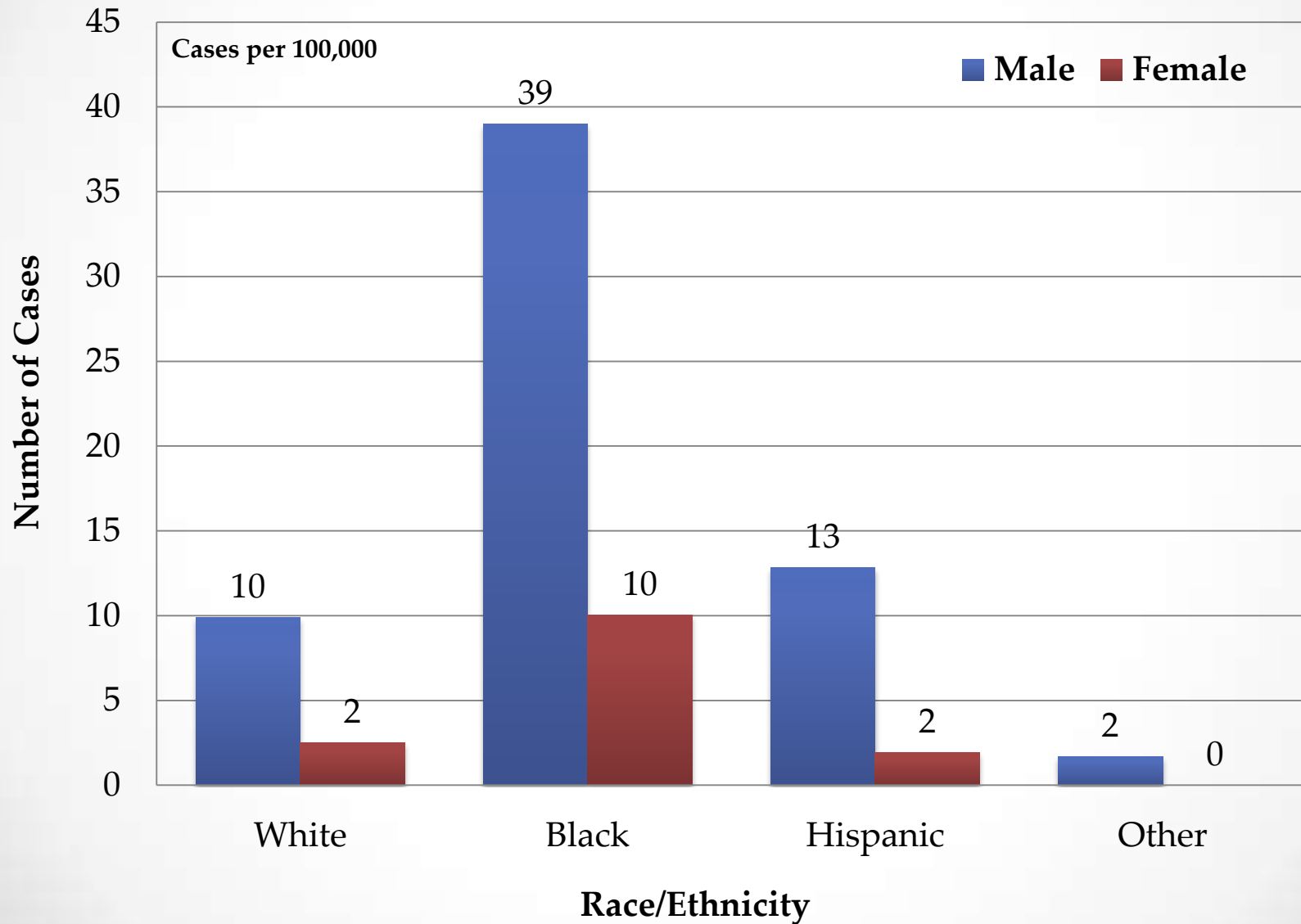
New Diagnosis Rates by Sex, Fort Worth TGA



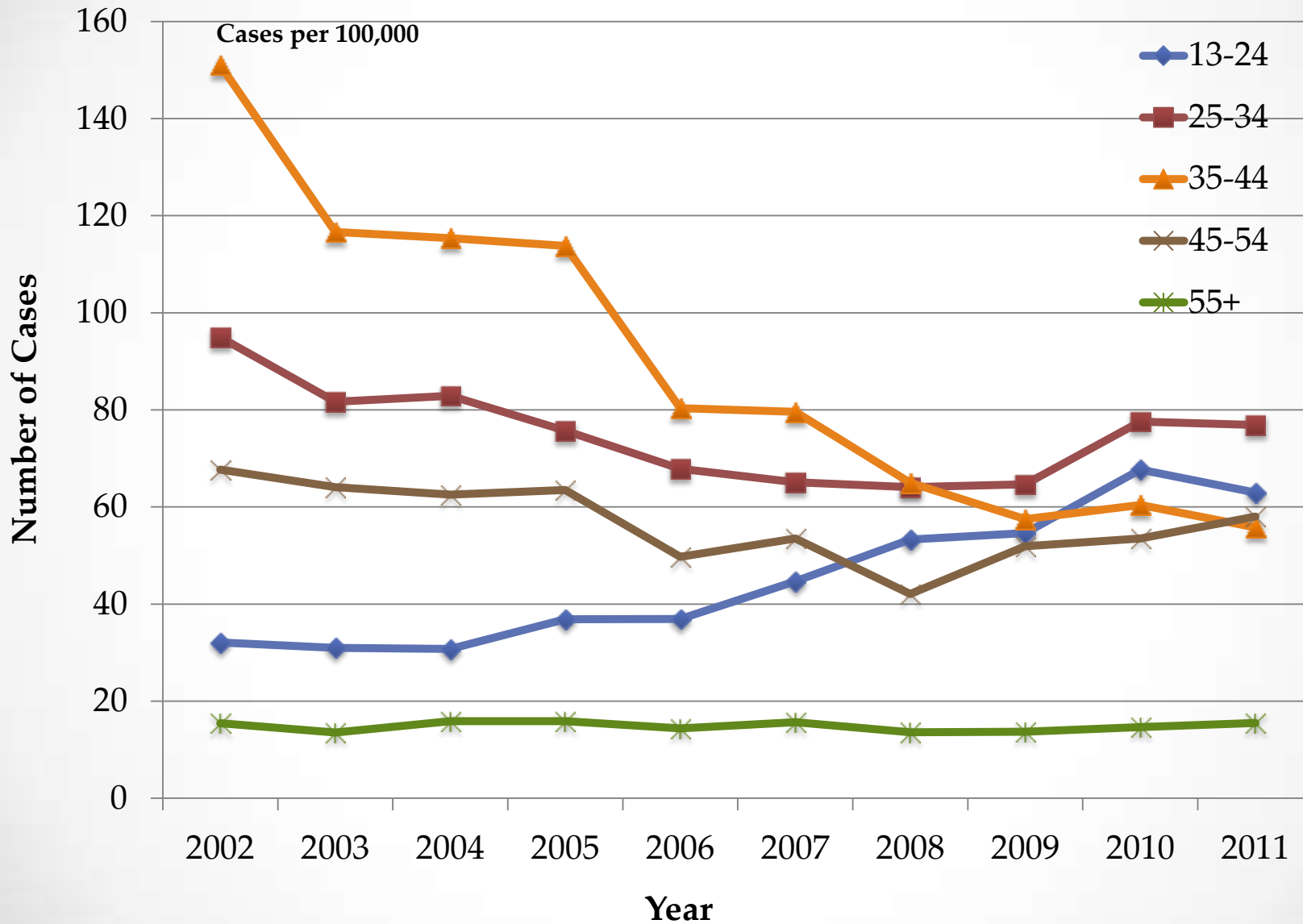
New Diagnosis Rates by Race/Ethnicity and Sex, Dallas EMA 2011



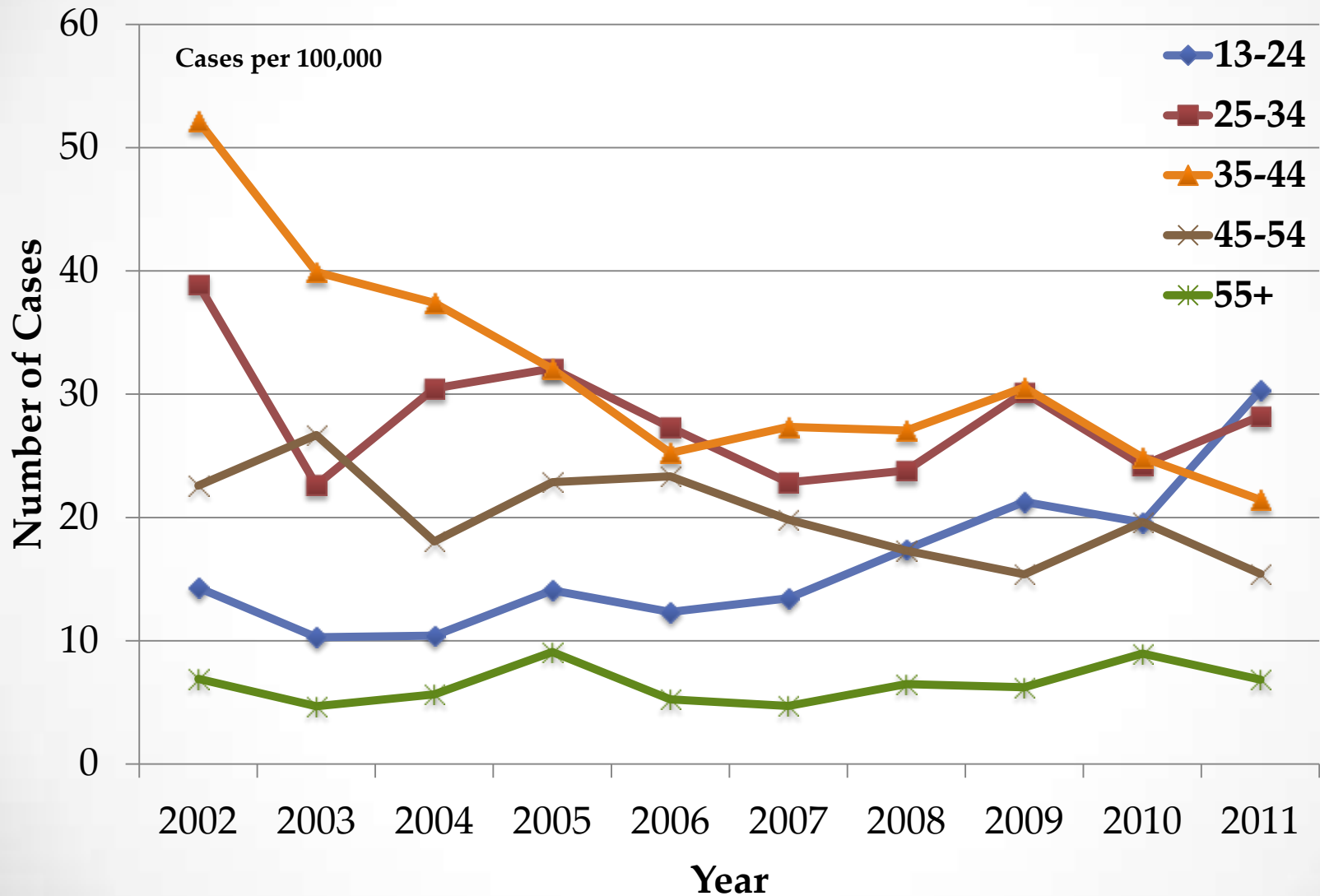
New Diagnosis Rates by Race/Ethnicity and Sex, Fort Worth TGA 2011



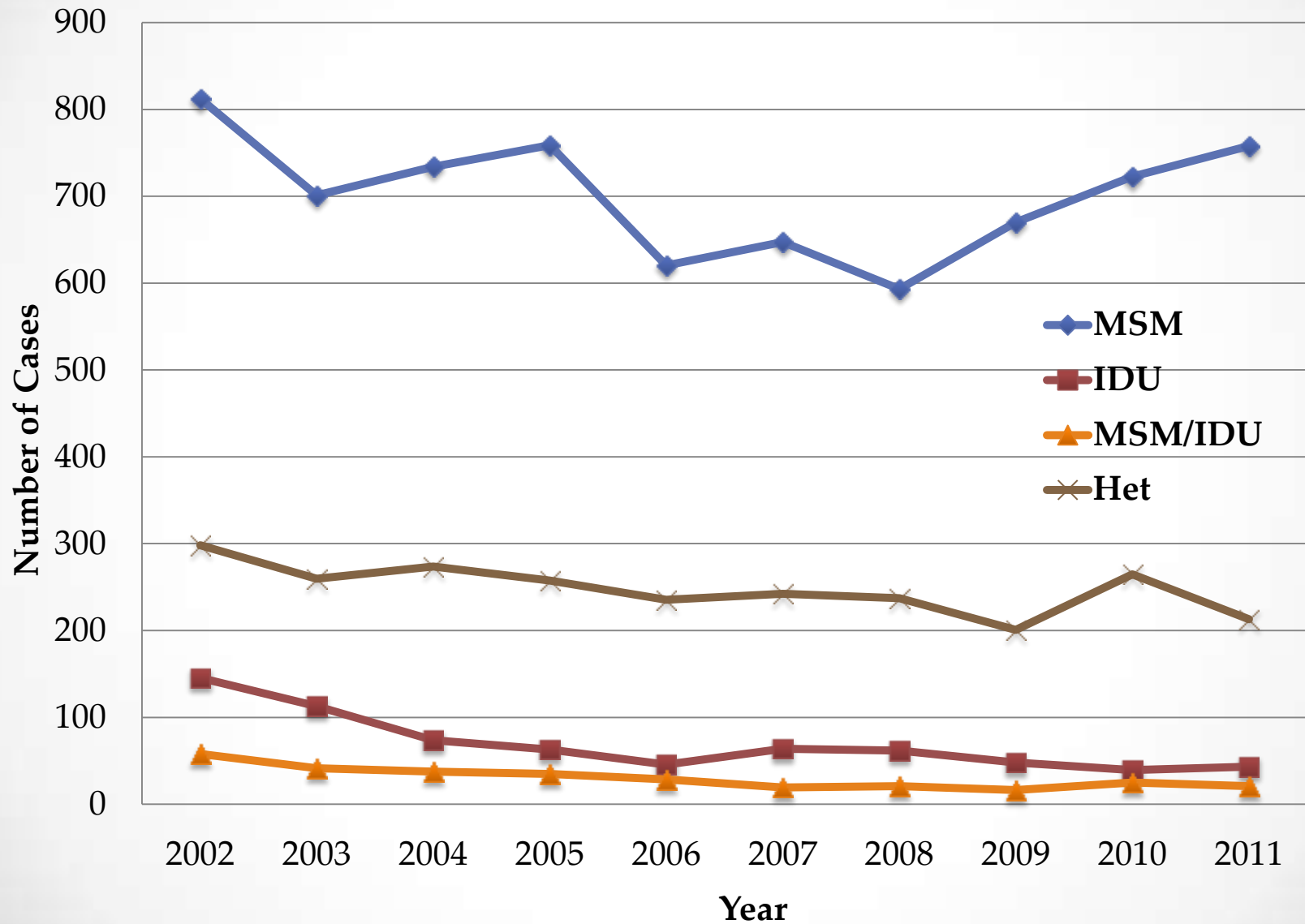
New Diagnosis Rates by Age Group, Dallas EMA



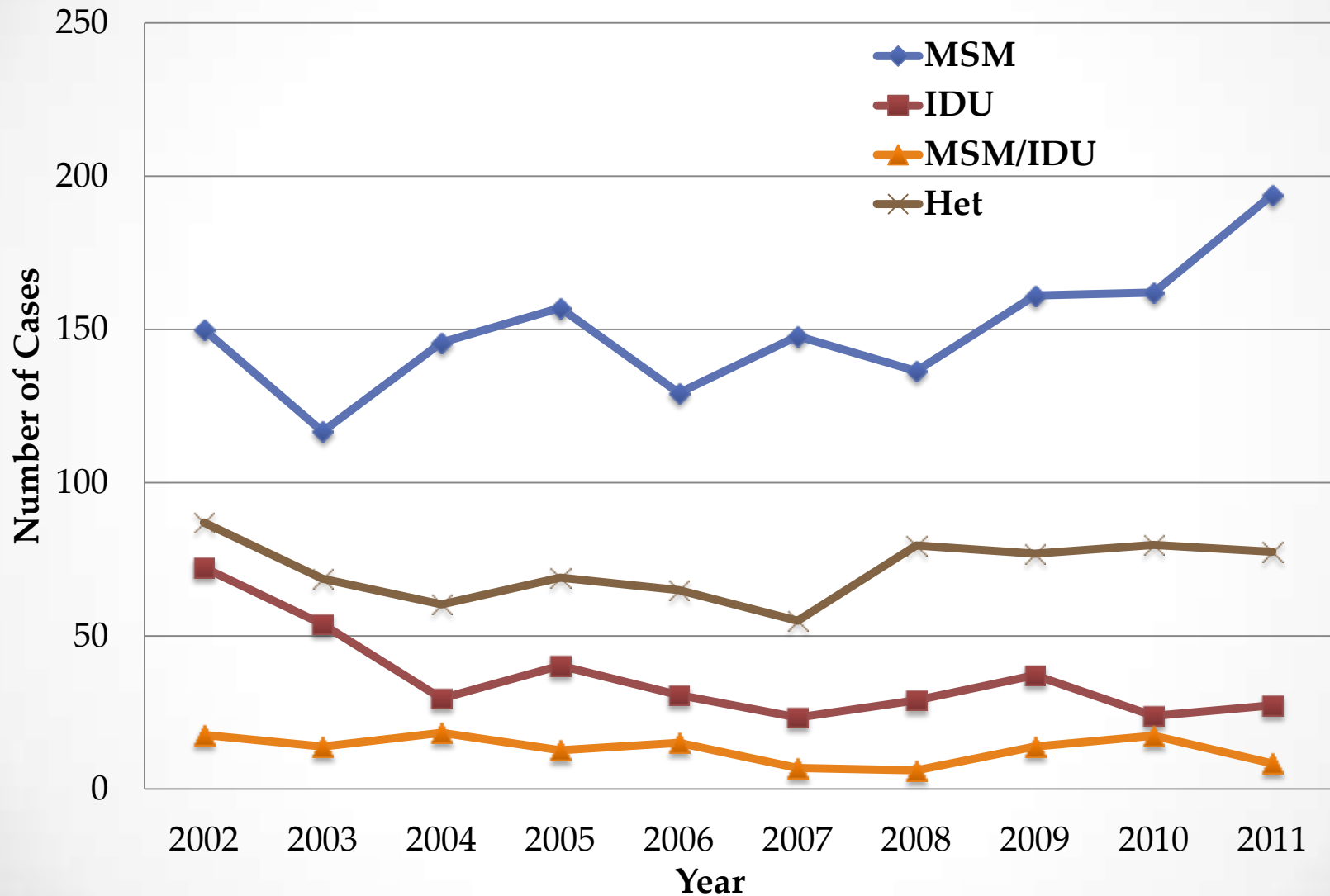
New Diagnosis Rates by Age Group, Fort Worth TGA



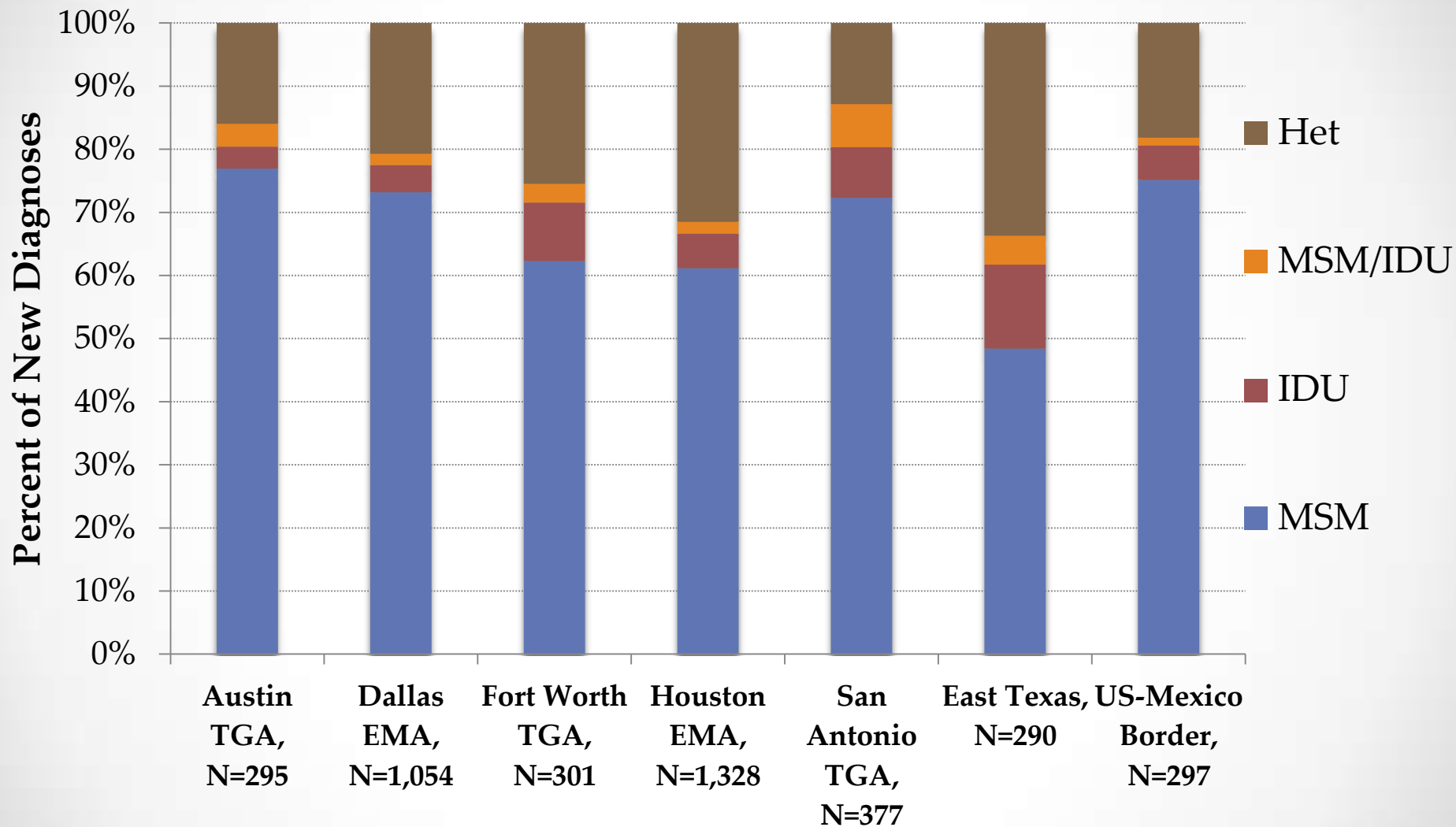
New Diagnoses by Transmission Category, Dallas EMA



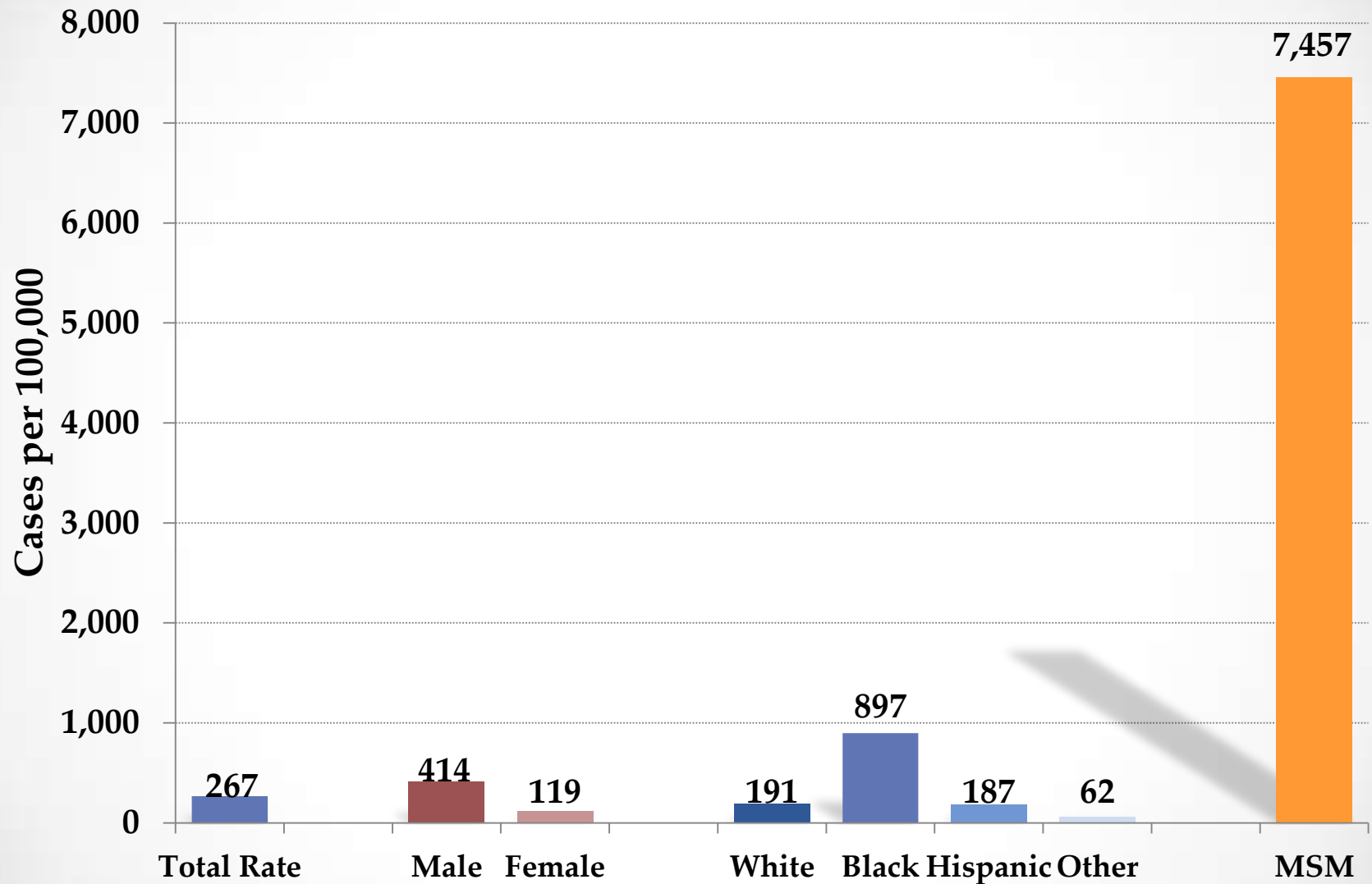
New Diagnoses by Transmission Category, Fort Worth TGA



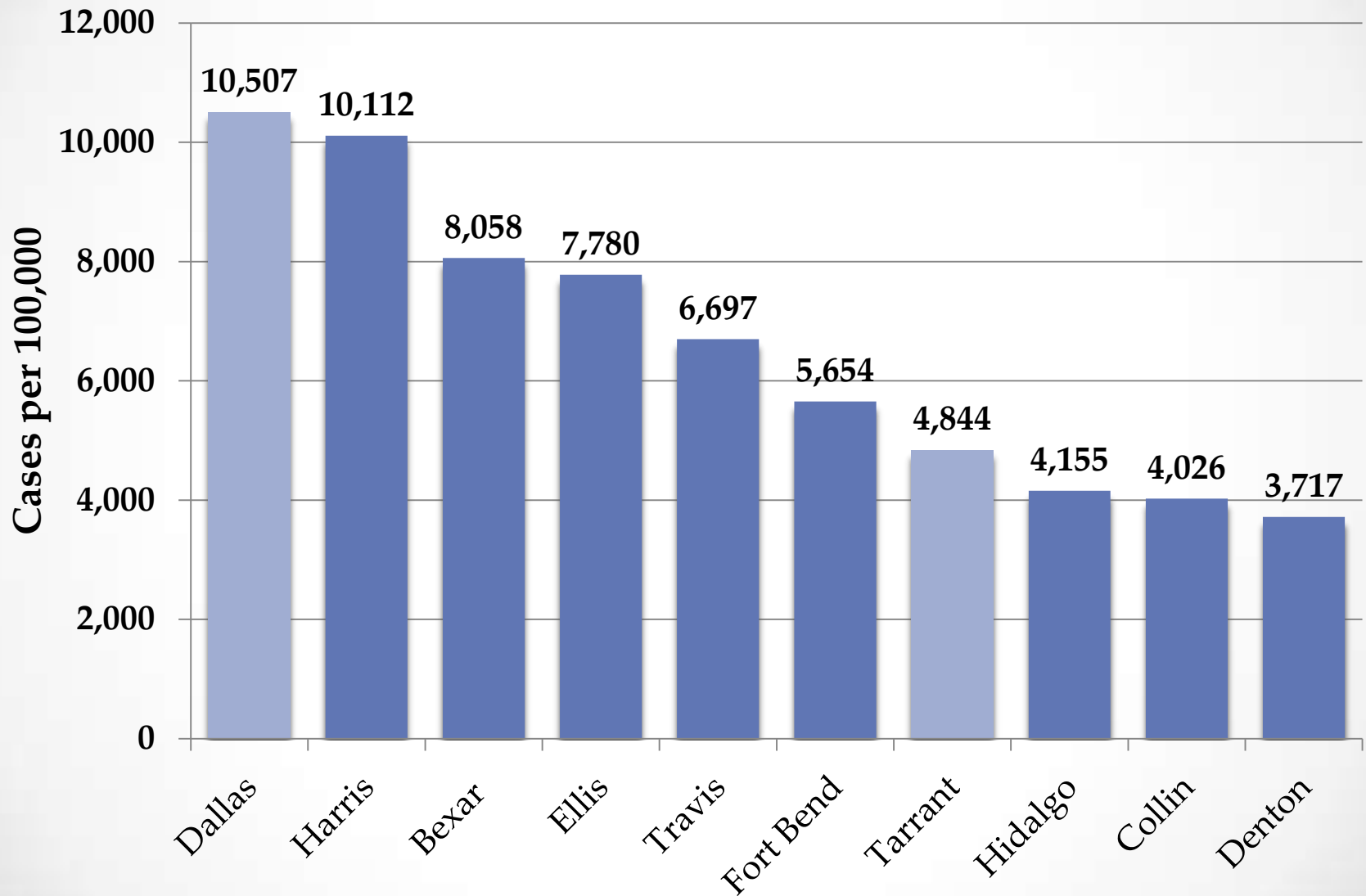
New Diagnosis Transmission Category, 2011



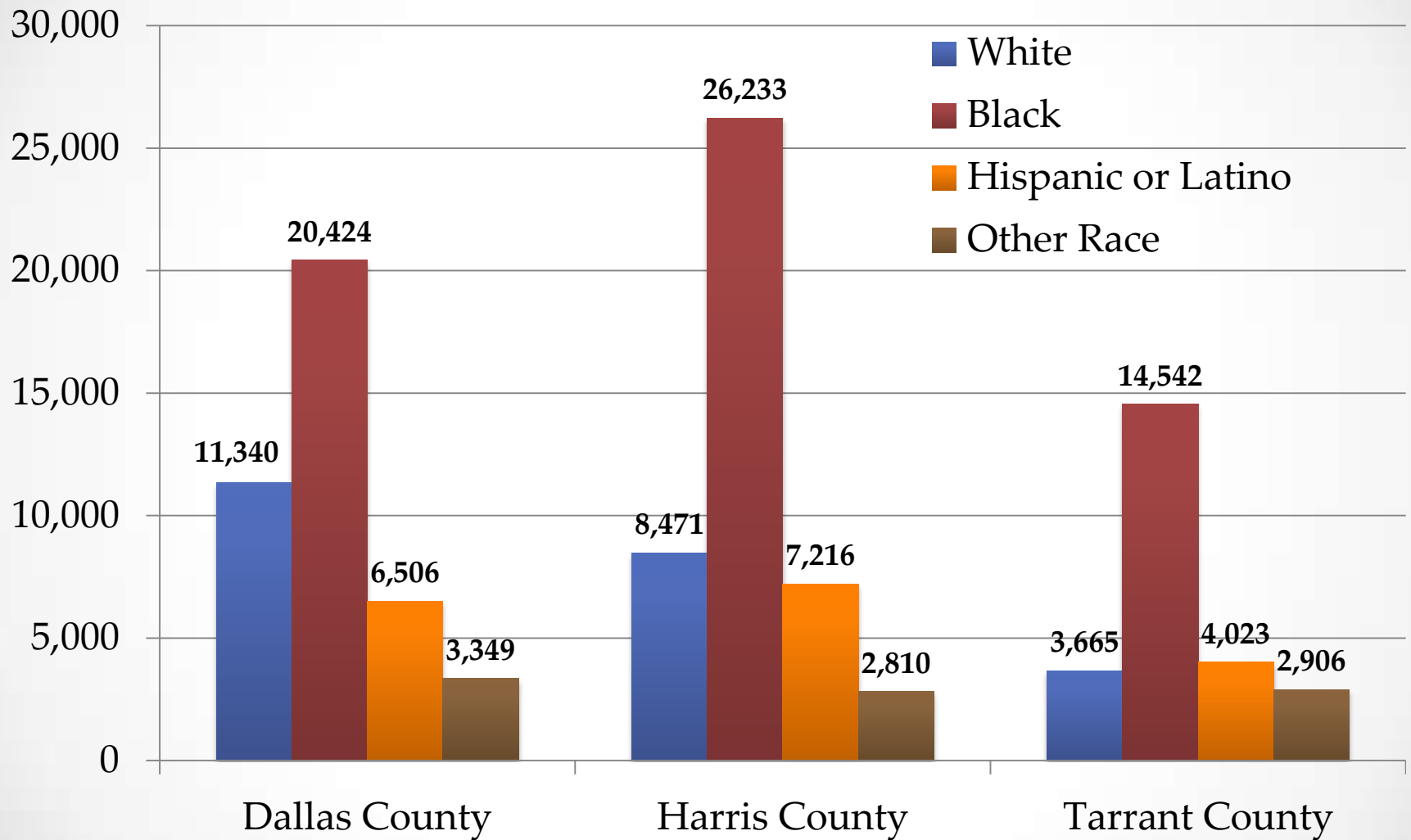
HIV Prevalence Rate by Selected Characteristics, Texas, 2011



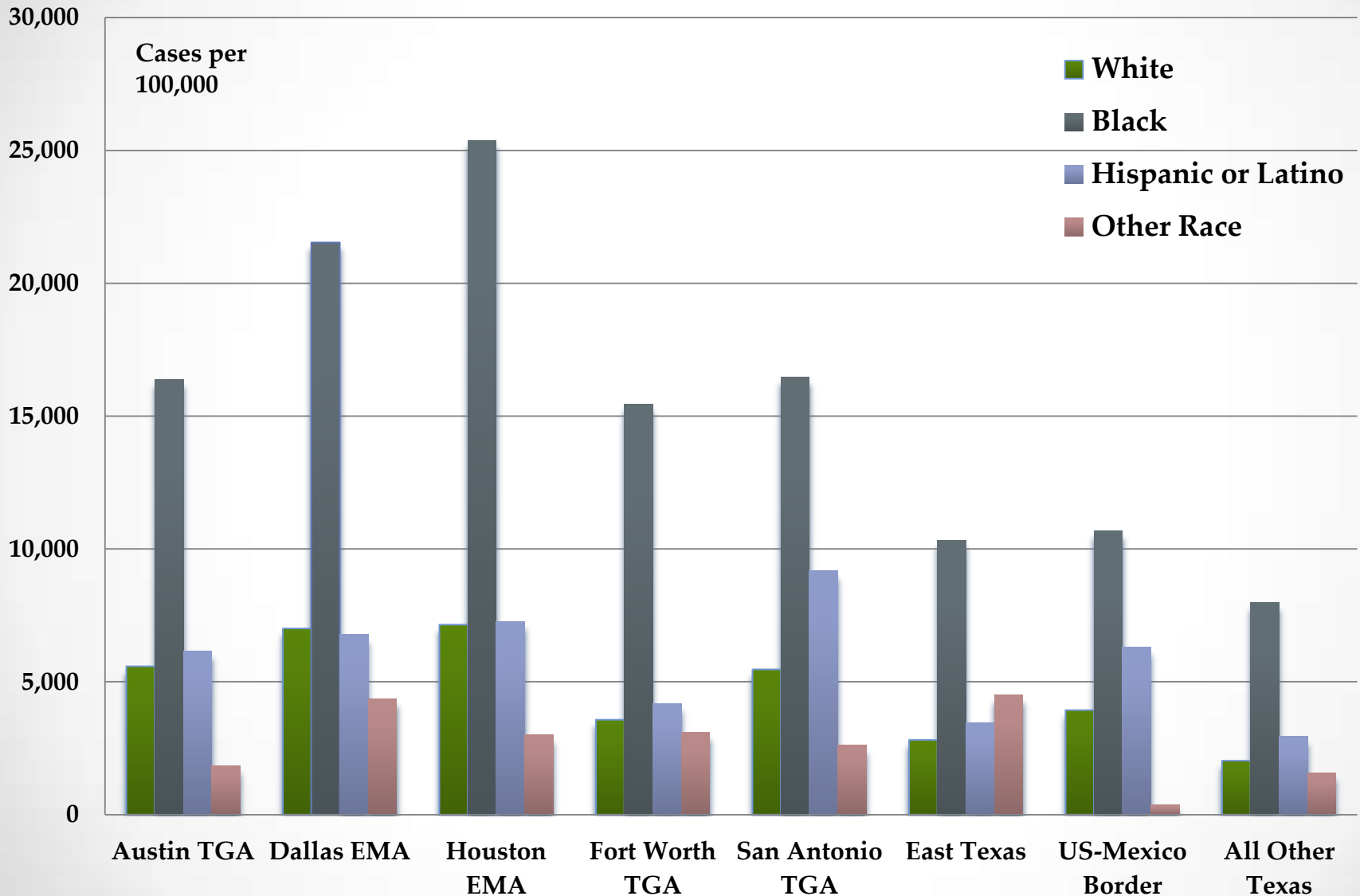
MSM Prevalence Rate by Selected Counties, 2011



MSM Prevalence Rate by Race, Dallas, Harris, and Tarrant 2011



Rates of MSM PLWHA by TGA/EMA, 2011



Jonathon Poe, MSSW
jonathon.poe@dshs.state.tx.us
512-533-3032