

Syphilis Health Check:

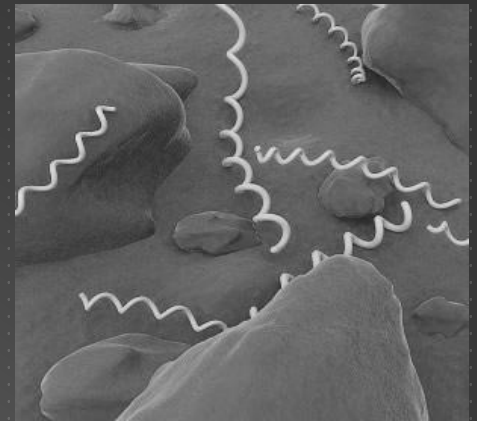
Implementation of a Rapid Treponemal Test in
Local Health Department Labs

Sydney S. Minnerly, MA

Syphilis Elimination Coordinator

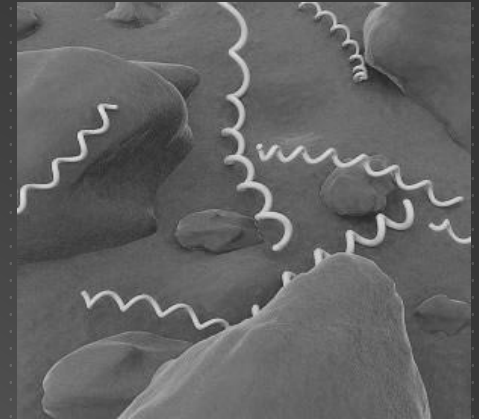
WHAT...

- „ Rapid Treponemal Test
- „ FDA-Approved
- „ Screening or with Non-Trep Test
- „ Moderately Complex
- „ CLIA Waiver pending



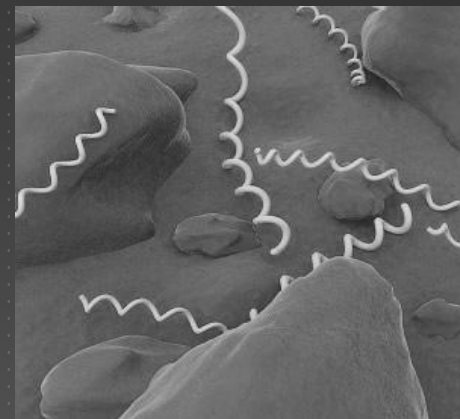
HOW...

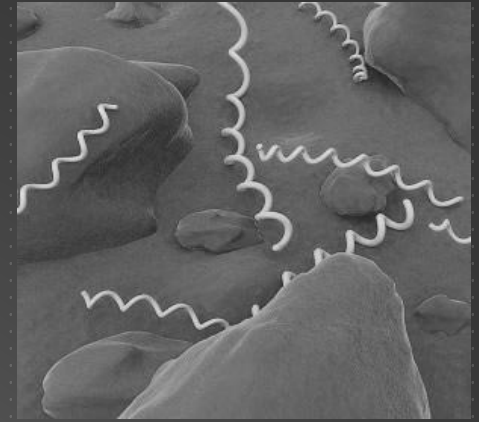
- " April - September 2012
- " 4 local labs identified
 - " Performed stat RPRs in-house
 - " Sent specimens out
 - " Had to wait for confirmation tests (locally batched)
- " Established testing parameters
 - " Reactive stat non-treponemal test (RPR)
 - " No previous treponemal testing history documented
 - " Process specimens for treponemal testing as usual
 - " Alert DSHS of any discordant results



WHO...

- " 225 SHC tests conducted
- " Age 33.8 (16-71)
- " 25% Female, 75% Male
- " 21% AA, 47% Hispanic, 27% White
- " 31 co-infected with HIV (7 new infections)
- " 170 Cases Identified
 - " 27 Primary
 - " 54 Secondary
 - " 62 Early Latent
 - " 27 Unknown Duration





- „ 34 BFPs identified
 - „ Avoided over-treat/public health follow-up

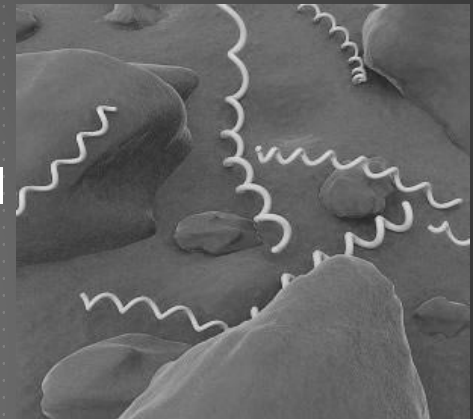
- „ 4 BFPs identified due to pregnancy
 - „ 1:1,1:4,1:8, 1:16
 - „ Took 2-9 days for traditional TPPA to be received

- „ Overall, saved an average of 5.1 days awaiting for TPPA

- „ Patients treated within one day of diagnosis
 - „ 139 treated the same day (82%)

THE DISCORDANT ONES...

- " 1 patient treated by PMD >1 mo. prior to reporting (primary stage)
 - " - RPR, -SHC, + TPPA
- " 1 patient primary stage with penile lesion
 - " 1:4, -SHC, +TPPA
- " 2 with non-reactive SHC/indeterminate TPPA
 - " 1 secondary TPPA was NR
 - " 1 FTA-ABS was NR
- " 1 patient lost to follow-up for secondary treponemal
 - " 1:1, +SHC, -TPPA



Sydney S Minnerly
Syphilis Elimination Coordinator
HIV/STD/TB/Hep Care Branch
sydney.minnerly@dshs.state.tx.us
512-533-3087

