

**Weekly Flu Surveillance Report**  
**Public Health Region 9/10**  
**Week 43- October 24th-October 30th**



Texas Department of State Health Services

**Disclaimer**

Most cases of influenza are not reportable in the state of Texas, thus the data in this report was collected from hospitals, clinics, and schools throughout the region who have agreed to voluntarily submit data.

**Definitions**

**ILI:** Influenza-Like Illness. This is an illness that resembles the flu, but has not been confirmed. **Rapid:** These tests are typically done in-house to quickly test for influenza. **PCR:** These tests are generally more precise than rapid tests and are performed at the DSHS state lab and many commercial labs to confirm a case of influenza.

**Geographic Spread of Influenza in the Region**

No Activity	Sporadic	Local	Regional	Widespread
-------------	----------	-------	----------	------------

Geographic spread is determined using the CDC's guidelines for flu activity: <http://www.cdc.gov/flu/weekly/overview.htm>.

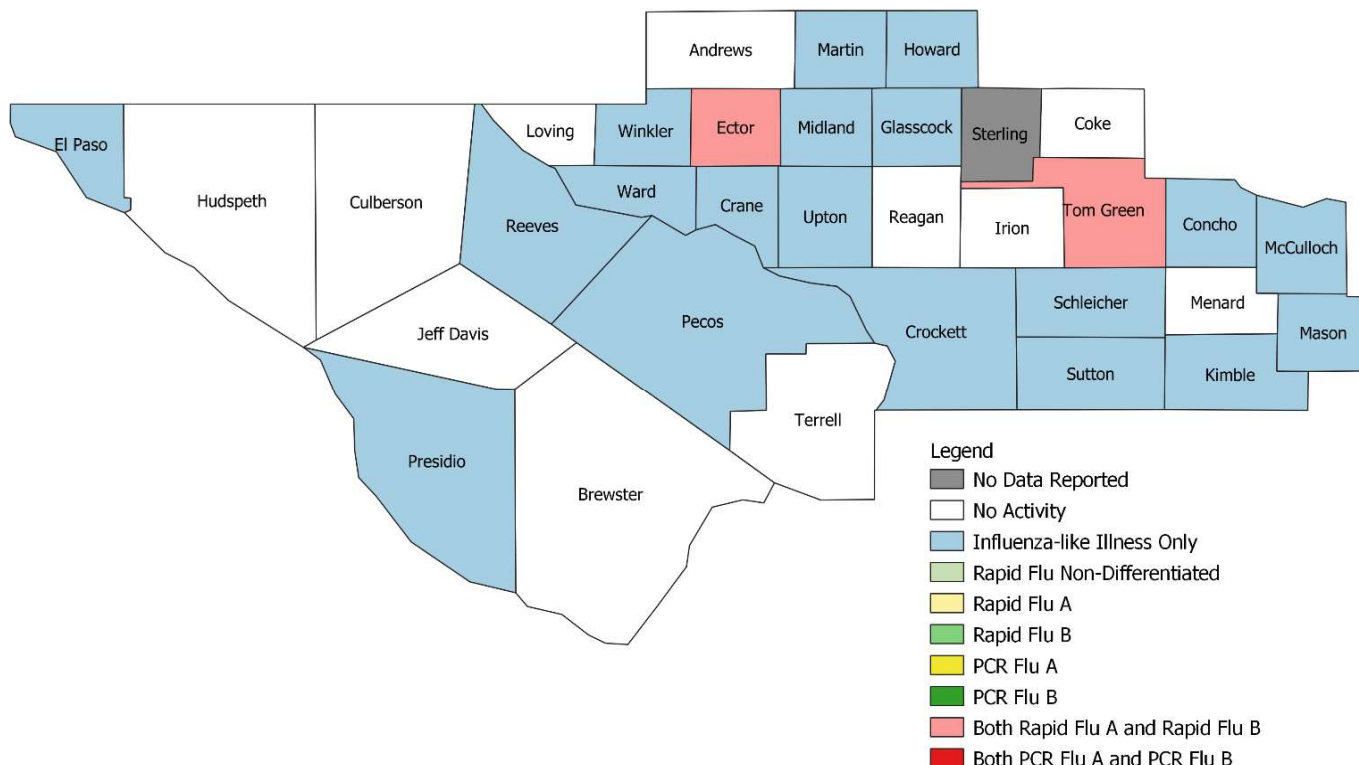
**Summary Data**

Condition	Week 43	Week 42	Week 41
Number of Counties Reporting (36 total)	↔ 35	35	36
Number of Counties Reporting ILI	↑ 20	15	16
Number of Counties Reporting High Levels of ILI*	↑ 6	3	8
Number of Counties Reporting Flu A	↑ 2	1	2
Number of Counties Reporting Flu B	↓ 2	4	4
Number of Counties Reporting Flu A & Flu B	↑ 2	1	2

The arrows represent changes from the previous week. A sideways arrow means there was no change in that condition.

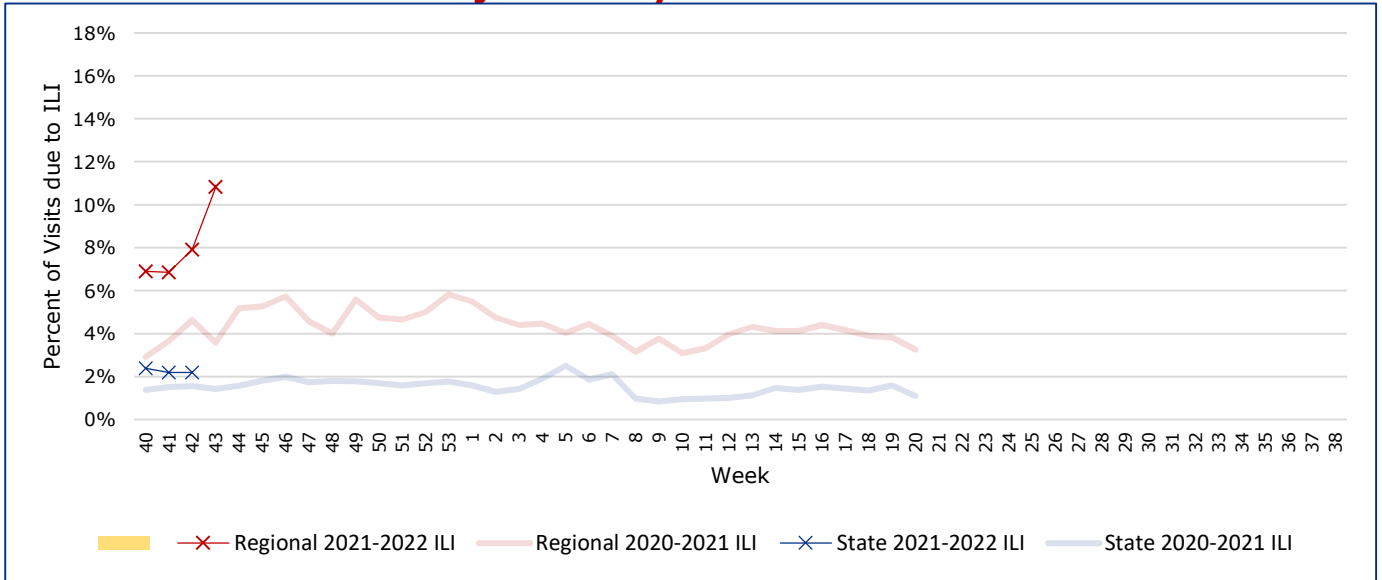
\*Counties with total percent of visits due to ILI above 4.0% for the week are considered to have high/abnormal levels.

**Map of Regional Flu Activity**



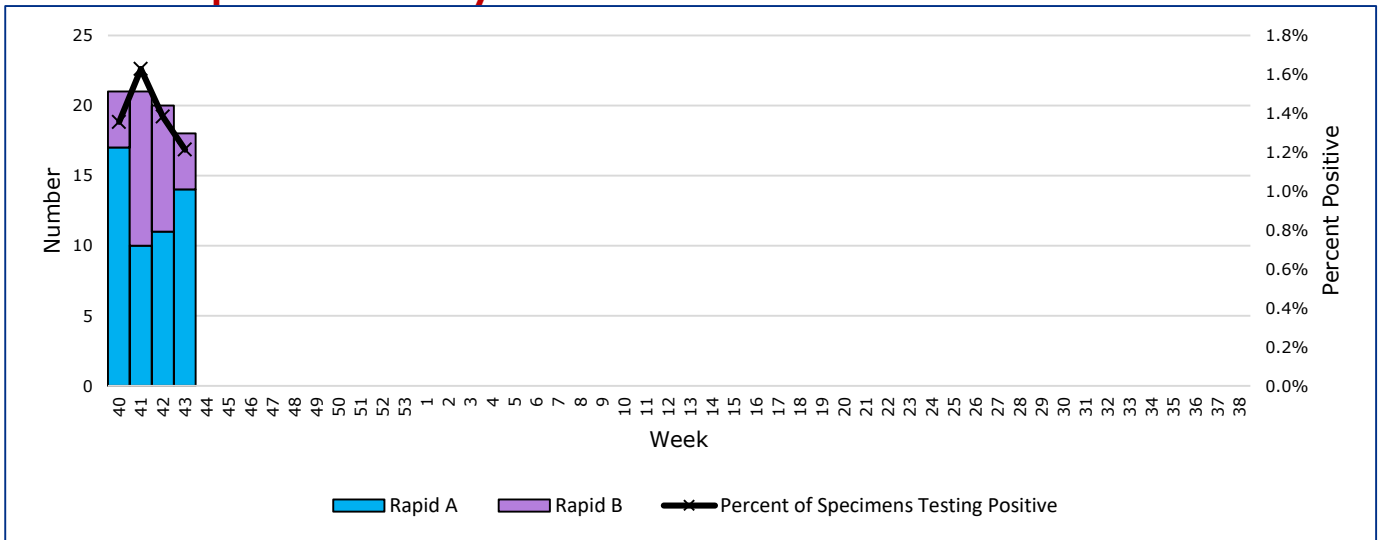
The map above depicts the previous week's reports of flu or influenza-like illness activity in each county. The legend on the bottom right of the map describes the meaning of each color.

## Influenza-Like Illness Projections by Week



This chart documents the percentage of patient visits that were due to ILI at hospitals and clinics around the region. It compares our region's data with the state's data and also compares to last flu season.

## Positive Rapid Flu Tests by Week



This chart documents the number of rapid tests that have come back positive for flu A and flu B each week throughout the region.

## Flu Data by County

County	Week 43				Week 42				Week 41			
	Patient Visits	% with ILI	Flu A	Flu B	Patient Visits	% with ILI	Flu A	Flu B	Patient Visits	% with ILI	Flu A	Flu B
Andrews	41	0%	0	0	469	32%	0	0	461	0%	0	0
Borden	1	0%	0	0	5	0%	0	0	1	0%	0	0
Brewster	81	0%	0	0	81	0%	0	0	81	1%	0	0
Coke	2	0%	0	0	4	0%	0	0	5	0%	0	0
Concho	11	9%	0	0	32	0%	0	0	16	0%	0	0
Crane	44	2%	0	0	35	6%	0	0	29	3%	0	0
Crockett	3	33%	0	0	5	0%	0	0	4	0%	0	0
Culberson	14	0%	0	0	11	0%	0	0	8	0%	0	0
Dawson	150	0%	0	0	152	1%	0	0	159	0%	0	0
Ector	4280	14%	13	3	4385	14%	11	5	3148	19%	9	7
El Paso	8045	3%	0	0	7836	3%	0	3	8421	2%	1	1
Gaines	114	3%	0	0	118	1%	0	0	127	1%	0	0
Glasscock	78	5%	0	0	3	0%	0	0	1	0%	0	0
Howard	753	3%	0	0	800	10%	0	0	394	5%	0	0
Hudspeth	23	0%	0	0	19	0%	0	0	13	0%	0	0
Irion	1	0%	0	0	1	0%	0	0	55	0%	0	0
Jeff Davis	19	0%	0	0	16	0%	0	0	18	0%	0	0
Kimble	174	1%	0	0	163	4%	0	0	172	1%	0	0
Loving	1	0%	0	0	0		0	0	1	0%	0	0
McCulloch	85	5%	0	0	12	0%	0	0	26	0%	0	0
Martin	490	2%	0	0	484	13%	0	0	51	0%	0	0
Mason	28	4%	0	0	28	0%	0	0	30	0%	0	0
Menard	18	0%	0	0	10	0%	0	0	12	0%	0	0
Midland	2831	10%	0	0	2858	10%	0	0	3562	3%	0	0
Pecos	639	42%	0	0	106	0%	0	0	125	2%	0	0
Presidio	137	8%	0	0	72	1%	0	0	71	0%	0	0
Reagan	26	0%	0	0	16	6%	0	0	19	5%	0	0
Reeves	640	43%	0	0	171	5%	0	0	145	10%	0	0
Schleicher	14	21%	0	0	9	11%	0	0	19	0%	0	0
Sterling	0		0	0	3	0%	0	0	1	0%	0	0
Sutton	22	5%	0	0	25	0%	0	0	17	0%	0	0
Terrell	17	0%	0	0	5	0%	0	0	20	0%	0	0
Tom Green	1228	2%	1	1	1354	1%	0	1	1239	1%	0	2
Upton	132	23%	0	0	148	28%	0	1	59	41%	0	1
Ward	643	43%	0	0	87	1%	0	0	669	14%	0	0
Winkler	551	49%	0	0	32	3%	0	0	418	18%	0	0
<b>Total</b>	<b>21336</b>	<b>10.7%</b>	<b>14</b>	<b>4</b>	<b>19555</b>	<b>10.5%</b>	<b>11</b>	<b>10</b>	<b>19597</b>	<b>6.7%</b>	<b>10</b>	<b>11</b>

## Flu-Associated Pediatric Deaths & Outbreaks

No flu-associated pediatric deaths have been reported in PHR 9/10 this flu season. No flu outbreaks have been reported for Week 43.