



Weekly Flu Surveillance Report

Week 13 - March 24th - March 30th, 2024

Disclaimer

Most cases of influenza are not reportable in the state of Texas, thus the data in this report was collected from hospitals, clinics, and schools throughout the region who have agreed to voluntarily submit data.

Definitions

ILI: Influenza-Like Illness. This is an illness that resembles the flu, but has not been confirmed. **Rapid:** These tests are typically done in-house to quickly test for influenza. **PCR:** These tests are generally more precise than rapid tests and are performed at the DSHS state lab and many commercial labs to confirm a case of influenza.

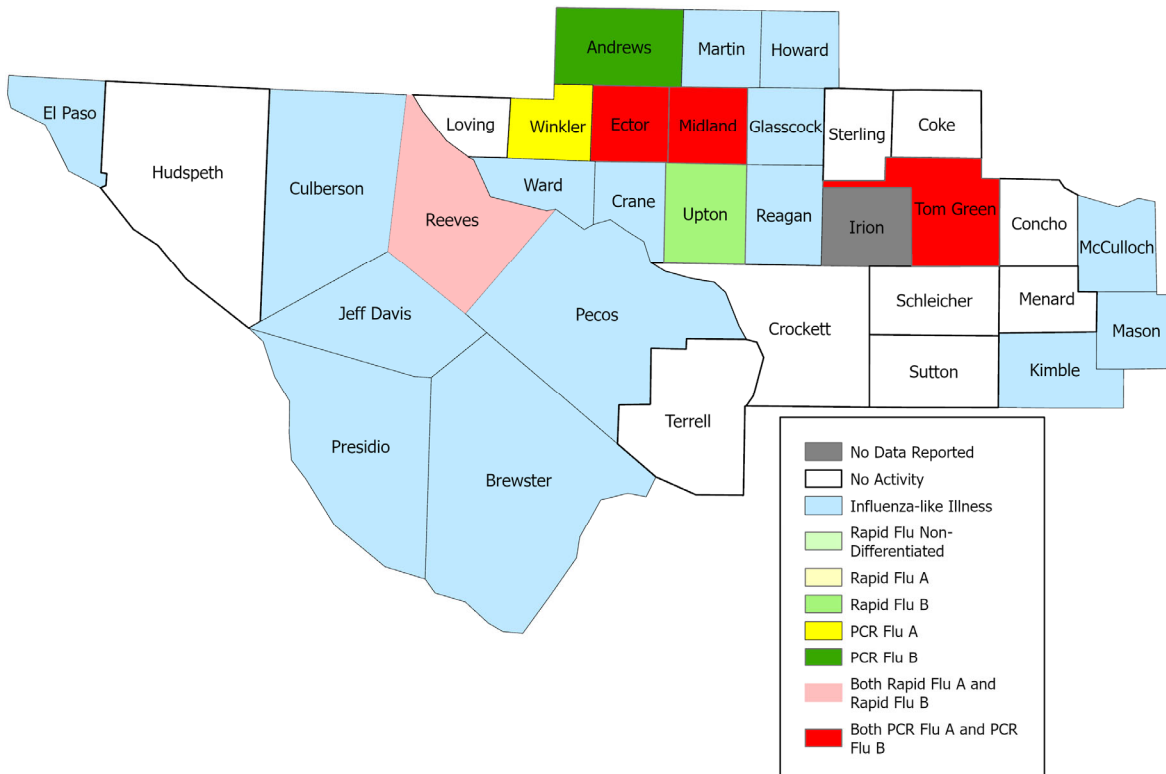
Summary Data

Condition	Week 13	Week 12	Week 11
Number of Counties Reporting (36 total)	↔ 35	35	34
Number of Counties Reporting ILI	↓ 17	20	18
Number of Counties Reporting High Levels of ILI*	↓ 3	5	4
Number of Counties Reporting Flu A	↓ 5	11	8
Number of Counties Reporting Flu B	↓ 6	8	8
Number of Counties Reporting Flu A & Flu B	↓ 4	8	7

The arrows represent changes from the previous week. A sideways arrow means there was no change in that condition.

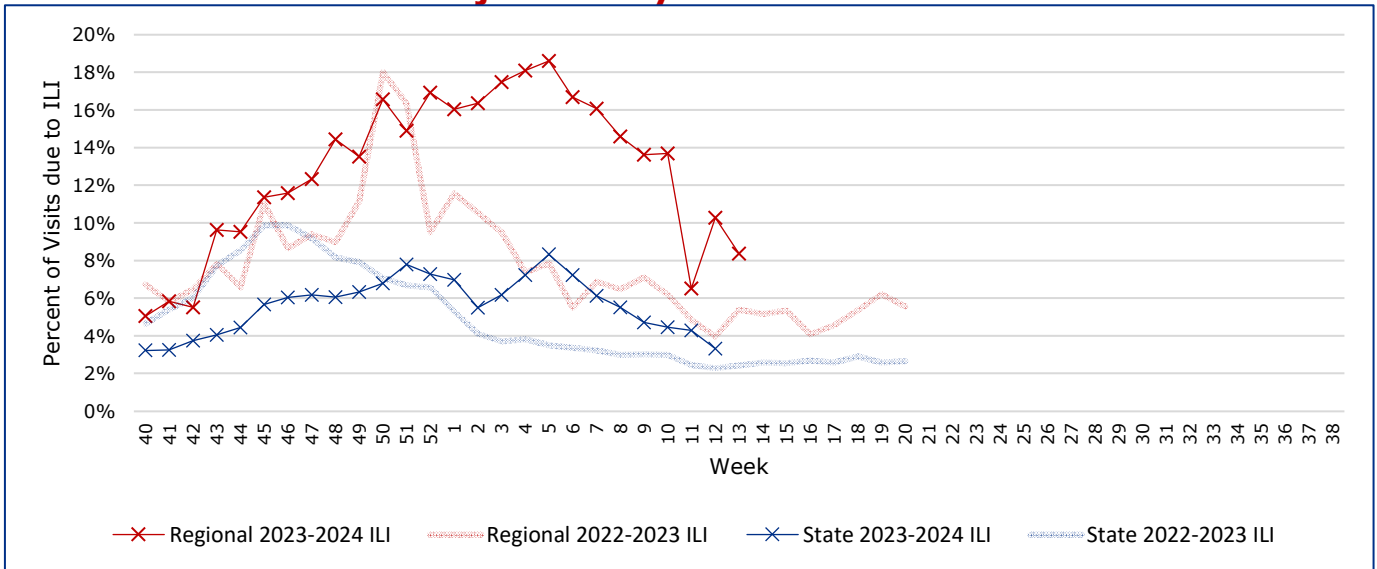
*Counties with total percent of visits due to ILI above 4.0% for the week are considered to have high/abnormal levels.

Map of Regional Flu Activity



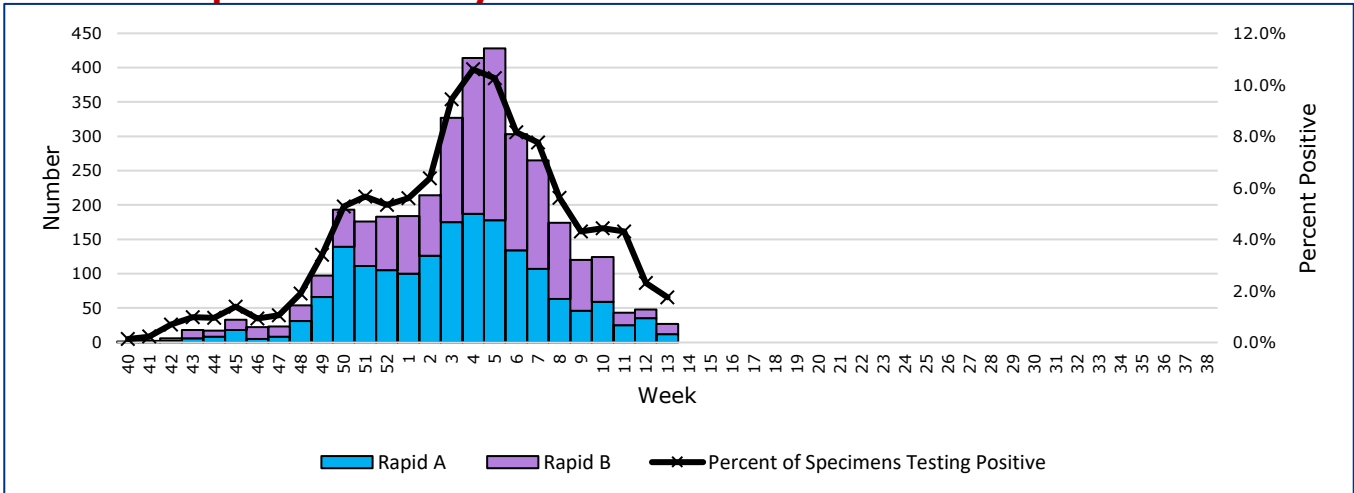
The map above depicts the previous week's reports of flu or influenza-like illness activity in each county. The legend on the bottom right of the map describes the meaning of each color.

Influenza-Like Illness Projections by Week



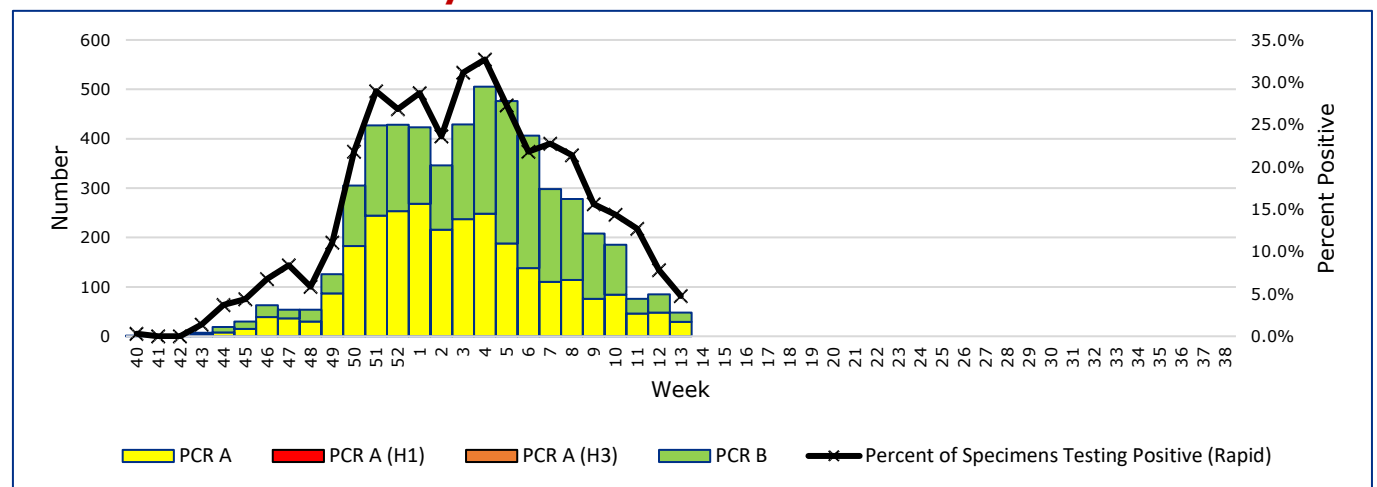
This chart documents the percentage of patient visits that were due to ILI at hospitals and clinics around the region, excluding confirmed COVID cases. It compares our region's data with the state's data and also compares to last flu season.

Positive Rapid Flu Tests by Week



This chart documents the number of rapid tests that have come back positive for flu A and flu B each week throughout the region.

Positive PCR Flu Tests by Week



This chart documents the number of PCR tests that have come back positive for flu A and flu B each week throughout the region.

Flu Data by County

County	Week 13				Week 12				Week 11			
	Patient Visits	% with ILI	Flu A	Flu B	Patient Visits	% with ILI	Flu A	Flu B	Patient Visits	% with ILI	Flu A	Flu B
Andrews	612	7%	0	4	639	7%	2	4	610	11%	2	4
Borden	1	0%	0	0	1	0%	0	0	1	0%	0	0
Brewster	83	0%	0	0	100	0%	0	0	85	0%	0	0
Coke	4	0%	0	0	8	0%	0	0	7	0%	0	0
Concho	16	0%	0	0	16	0%	0	0	22	0%	0	0
Crane	24	0%	0	0	35	0%	0	0	42	0%	0	0
Crockett	12	0%	0	0	6	0%	0	0	9	0%	0	0
Culberson	8	0%	0	0	4	0%	0	0	8	0%	0	0
Dawson	144	0%	0	0	150	0%	0	0	156	0%	0	0
Ector	5005	21%	19	17	5366	21%	35	19	2156	7%	8	7
El Paso	6712	0%	0	0	7382	1%	3	4	7447	1%	0	5
Gaines	150	0%	0	0	159	0%	0	0	147	0%	0	0
Glasscock	14	7%	0	0	4	0%	0	0	7	0%	0	0
Howard	546	3%	0	0	534	4%	0	0	352	0%	0	0
Hudspeth	20	0%	0	0	14	0%	0	0	14	0%	0	0
Irion	0		0	0	2	0%	0	0	1	0%	0	0
Jeff Davis	14	0%	0	0	13	0%	0	0	13	0%	0	0
Kimble	10	0%	0	0	119	4%	1	0	116	2%	0	0
Loving	1	0%	0	0	0		0	0	0		0	0
McCulloch	42	76%	0	0	68	74%	1	3	63	76%	1	3
Martin	250	6%	0	0	149	7%	1	0	67	0%	0	0
Mason	36	0%	0	0	33	0%	0	0	33	0%	0	0
Menard	3	0%	0	0	15	0%	0	0	6	0%	0	0
Midland	2836	11%	10	5	2874	12%	12	14	2676	13%	32	12
Pecos	116	0%	0	0	120	0%	0	0	140	0%	0	0
Presidio	41	0%	0	0	26	0%	0	0	139	24%	0	0
Reagan	25	0%	0	0	21	0%	0	0	10	0%	0	0
Reeves	838	3%	2	1	990	7%	1	1	923	7%	6	5
Schleicher	2	0%	0	0	2	0%	0	0	0		0	0
Sterling	2	0%	0	0	2	0%	0	0	2	0%	0	0
Sutton	16	0%	0	0	13	0%	0	0	28	0%	0	0
Terrell	6	0%	0	0	6	0%	0	0	1	0%	0	0
Tom Green	1298	1%	7	6	1413	1%	12	3	1354	2%	10	10
Upton	116	14%	0	1	124	12%	1	0	94	15%	1	0
Ward	139	0%	0	0	749	44%	14	2	568	49%	11	2
Winkler	338	13%	3	0	81	0%	0	0	82	0%	0	0
Total	19480	8.2%	41	34	21238	10.1%	83	50	17379	6.3%	71	48

Flu-Associated Pediatric Deaths & Outbreaks

No flu-associated pediatric deaths have been reported in PHR 9/10 this flu season. In PHR 9/10, no flu outbreaks have been reported for Week 13.

For a more comprehensive look at respiratory illnesses circulating throughout Texas, please visit: <https://www.dshs.texas.gov/texas-respiratory-virus-surveillance-report> and select the "Current Texas Respiratory Virus Surveillance Report"