



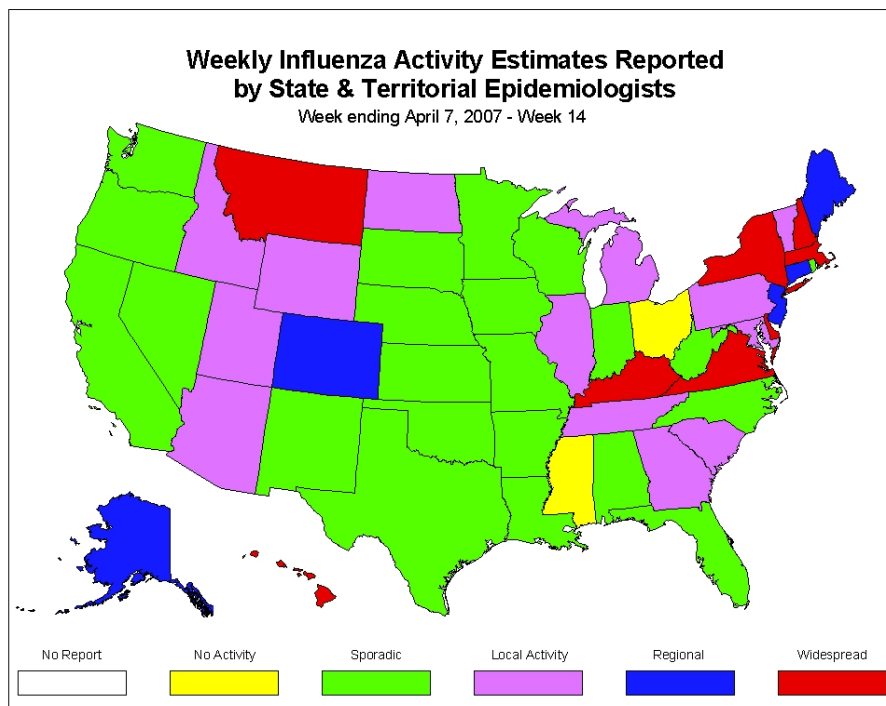
Influenza Surveillance Report 2006-2007 Season/MMWR Week 14

The flu activity level for the week ending April 7, 2007 is "**sporadic**". Sporadic activity indicates that isolated cases of lab confirmed influenza have been reported in the state, but influenza-like illness (ILI) is not increased in any of the regions. This is the first week that Texas has reported sporadic activity in 2007.

The DSHS laboratory isolated influenza in two specimens collected from Travis County during week 14. Both specimens were identified as flu A/H3.

In addition, the Air Force Institute for Operational Health (AFIOH) laboratory reported culture confirmed flu A from Lackland AFB (Bexar County) during week 14.

No school closures or institutional outbreaks were reported during week 14.

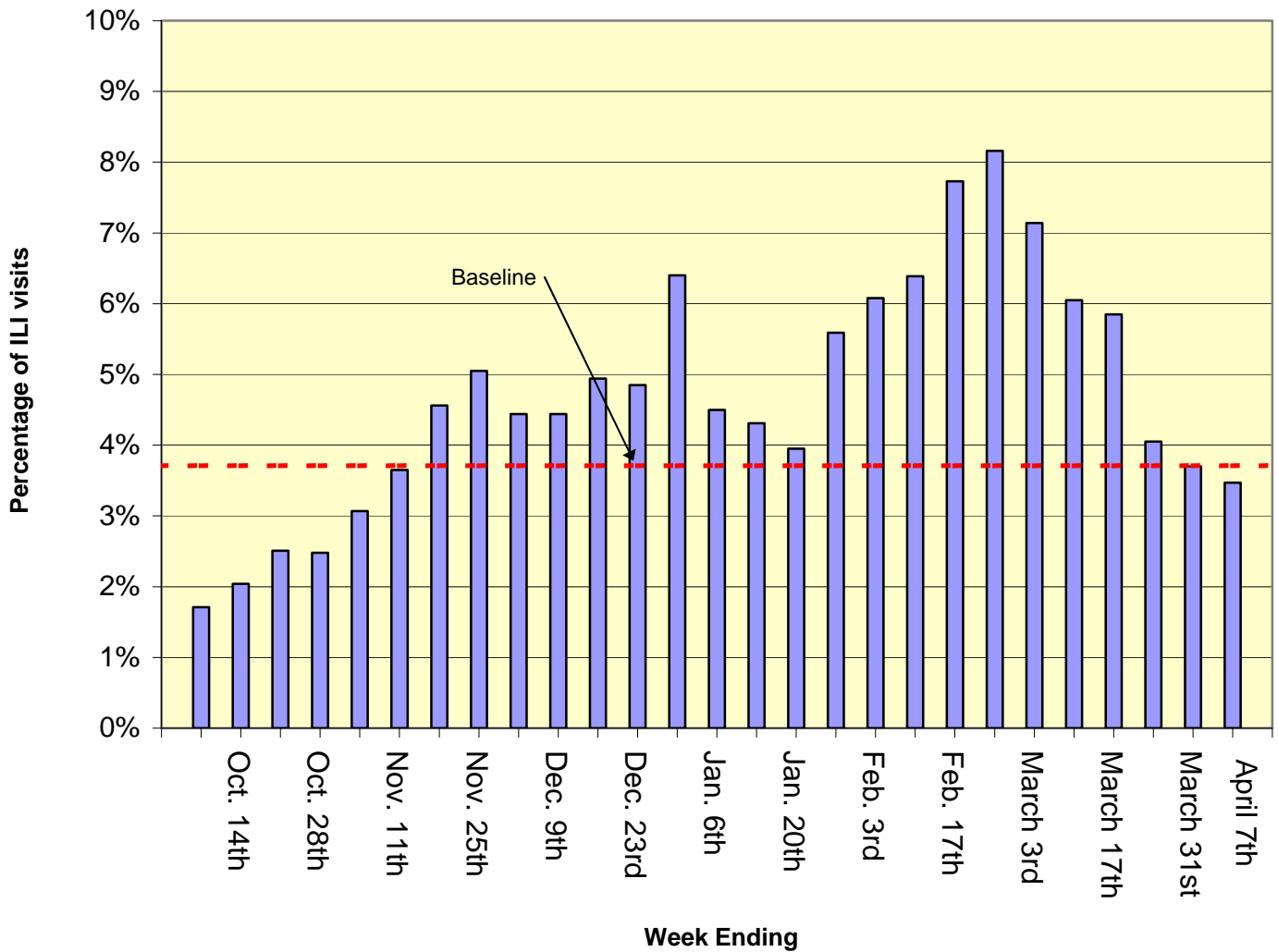


Seventy-eight sentinel providers have reported for week 14. Of all patient visits during this week, 3.47% were due to influenza-like illness (ILI). The baseline for Texas is 3.71%. The baseline is the mean percentage of patient visits for ILI during non-influenza weeks for the previous three seasons plus two standard deviations.

**Percentage of Influenza-Like Illness (ILI) Reported by Sentinel Providers in Texas
as of 4/19/07**

Week	# Reporting	Age 0-4	Age 5-24	Age 25-64	Age over 64	Total ILI	Total Patients	% ILI
2006-40	61	71	120	65	9	265	15479	1.71
2006-41	59	104	126	93	14	337	16457	2.04
2006-42	77	250	187	154	44	635	25223	2.51
2006-43	77	219	188	153	20	580	23296	2.48
2006-44	72	235	254	164	39	692	22504	3.07
2006-45	71	356	249	182	42	829	22660	3.65
2006-46	71	495	312	228	62	1097	24033	4.56
2006-47	76	450	227	237	95	1009	19958	5.05
2006-48	78	442	275	302	70	1089	24495	4.44
2006-49	84	374	325	283	96	1078	24229	4.44
2006-50	72	387	381	252	80	1100	22227	4.94
2006-51	67	349	259	187	50	845	17402	4.85
2006-52	63	460	199	264	104	1027	16039	6.40
2007-01	86	343	221	284	84	932	20681	4.50
2007-02	72	329	244	284	84	941	21819	4.31
2007-03	70	242	223	128	19	612	15461	3.95
2007-04	80	518	475	283	106	1382	24696	5.59
2007-05	82	560	580	380	62	1582	25999	6.08
2007-06	74	479	753	434	43	1709	26741	6.39
2007-07	83	685	755	473	71	1984	25662	7.73
2007-08	82	659	894	558	159	2270	27803	8.16
2007-09	78	589	664	475	132	1860	26039	7.14
2007-10	78	469	501	333	68	1371	22637	6.05
2007-11	68	417	382	407	93	1299	22178	5.85
2007-12	57	194	251	185	27	657	16210	4.05
2007-13	61	213	243	264	72	792	21393	3.70
2007-14	78	239	246	284	83	852	24500	3.47

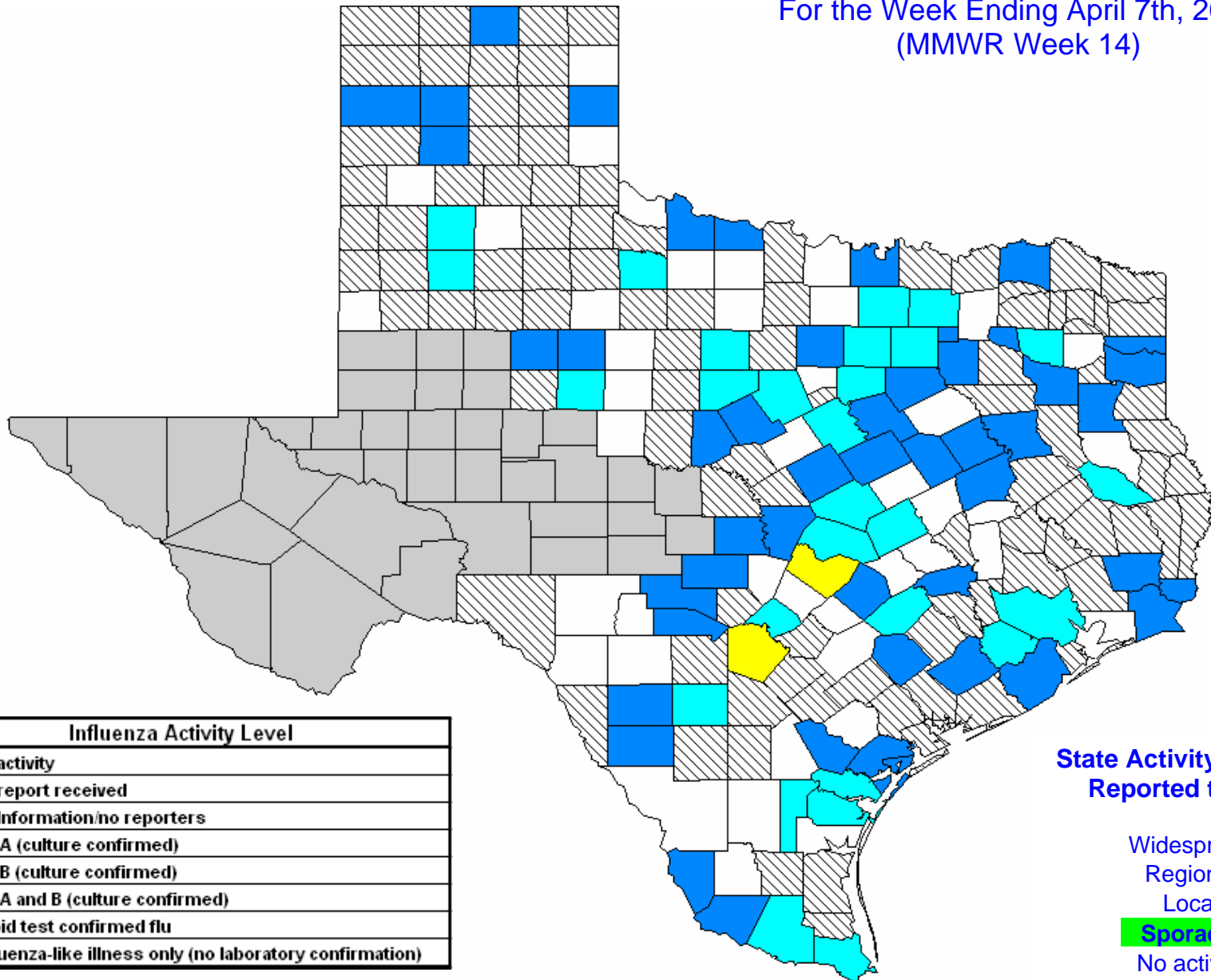
**Percentage of Visits Due to Influenza-Like Illness,
Texas Sentinel Providers Surveillance Network,
2006-2007 Season**



For more information on flu surveillance activities in the State of Texas, please visit the following website:

<http://www.dshs.state.tx.us/idcu/disease/influenza/surveillance/>

Statewide Influenza Activity
For the Week Ending April 7th, 2007
(MMWR Week 14)



Influenza Activity Level	
[White]	No activity
[Grey]	No report received
[Hatched]	No information/no reporters
[Yellow]	Flu A (culture confirmed)
[Orange]	Flu B (culture confirmed)
[Red]	Flu A and B (culture confirmed)
[Light Blue]	Rapid test confirmed flu
[Dark Blue]	Influenza-like illness only (no laboratory confirmation)

State Activity Level as Reported to CDC

Widespread
Regional
Local
Sporadic
No activity

*Influenza activity level corresponds to current MMWR week only and does not reflect previous weeks' activity.