



Texas Influenza Surveillance Report 2018-2019 Season/2018 MMWR Week 48

(November 25, 2018 – December 1, 2018)

Report produced on 12/7/2018

Summary

Influenza activity remains low across the state of Texas. Compared to the previous week, percentage of patient visits due to influenza-like illness (ILI) and the percentage of specimens testing positive for influenza reported by hospital laboratories slightly decreased. No influenza-associated pediatric deaths were reported. Two ILI or influenza-associated outbreaks were reported. In addition to flu, other respiratory viruses—especially respiratory syncytial virus (RSV)—were detected in Texas during week 48.

Table 1: Summary of Texas Influenza (Flu) and Influenza-like Illness (ILI) Activity for the Current Week

Texas Surveillance Component	Change from Previous Week	Current Week	Previous Week†	Page of Report
Statewide influenza activity level reported to CDC (geographic spread of influenza)	No change	Local	Local	--
Statewide ILINet Activity Indicator assigned by CDC (intensity of influenza-like illness)	No change	Minimal	Minimal	--
Percentage of specimens positive for influenza by hospital laboratories	▼0.97%	3.29%	4.26%	1
Percentage of visits due to ILI (ILINet)	▼0.07%	3.91%	3.98%	4
Number of regions reporting increased flu/ILI activity	No change	5	5	7
Number of regions reporting decreased flu/ILI activity	No change	1	1	7
Number of variant/novel influenza infections	No cases reported	0	0	7
Number of ILI/influenza outbreaks	▲2	2	0	7
Number of pediatric influenza deaths	No new cases reported	0	0	8

†Data displayed have been updated since last week's flu report with any new reports received.

Laboratory Results

Influenza

Hospital laboratories across Texas voluntarily report influenza tests (antigen, culture, and PCR) to the National Respiratory and Enteric Virus Surveillance System (NREVSS). Providers throughout Texas also submit specimens for influenza testing (PCR) to Texas public health laboratories, including the Texas Department of State Health Services (DSHS) state laboratory in Austin and the nine Texas Laboratory Response Network (LRN) laboratories. The results reported by Texas NREVSS participants and public health laboratories for the current week are summarized in the two tables below. Additional influenza test results (rapid tests, culture, PCR) and ILI activity were reported from providers and public health departments throughout the state (see county map at the end of this report).

Table 2: Influenza Testing Performed by Texas Hospital Laboratories for the Current Week

	Week 48	Season to Date Week Ending: Dec. 01, 2018
Number of labs reporting flu tests	13	
Number of specimens tested	2464	18430
Number of positive specimens (%)†	81 (3.29%)	411 (2.23%)
Percentage of total tests that were antigen detection tests	31.62%	
Positive specimens by type/subtype [n (%)]		
Influenza A	60 (74.07%)	264 (64.23%)
Subtyping performed	8 (13.33%)	18 (6.82%)
A (H1N1)	6 (75.00%)	16 (88.89%)
A (H3N2)	2 (25.00%)	2 (11.11%)
Subtyping not performed	52 (86.67%)	246 (93.18%)
Influenza B	21 (25.93%)	147 (35.77%)

†Laboratory data in 2016-2017 and 2017-2018 season reports may not be comparable to reports from seasons previous to 2016-2017 because the data only includes hospital laboratories data for the current season.

Figure 1: Number and Percentage of Tests (Antigen, Culture, PCR) Positive for Influenza by Type and Subtype Reported by Texas Hospital Laboratories, 2018-2019 Season

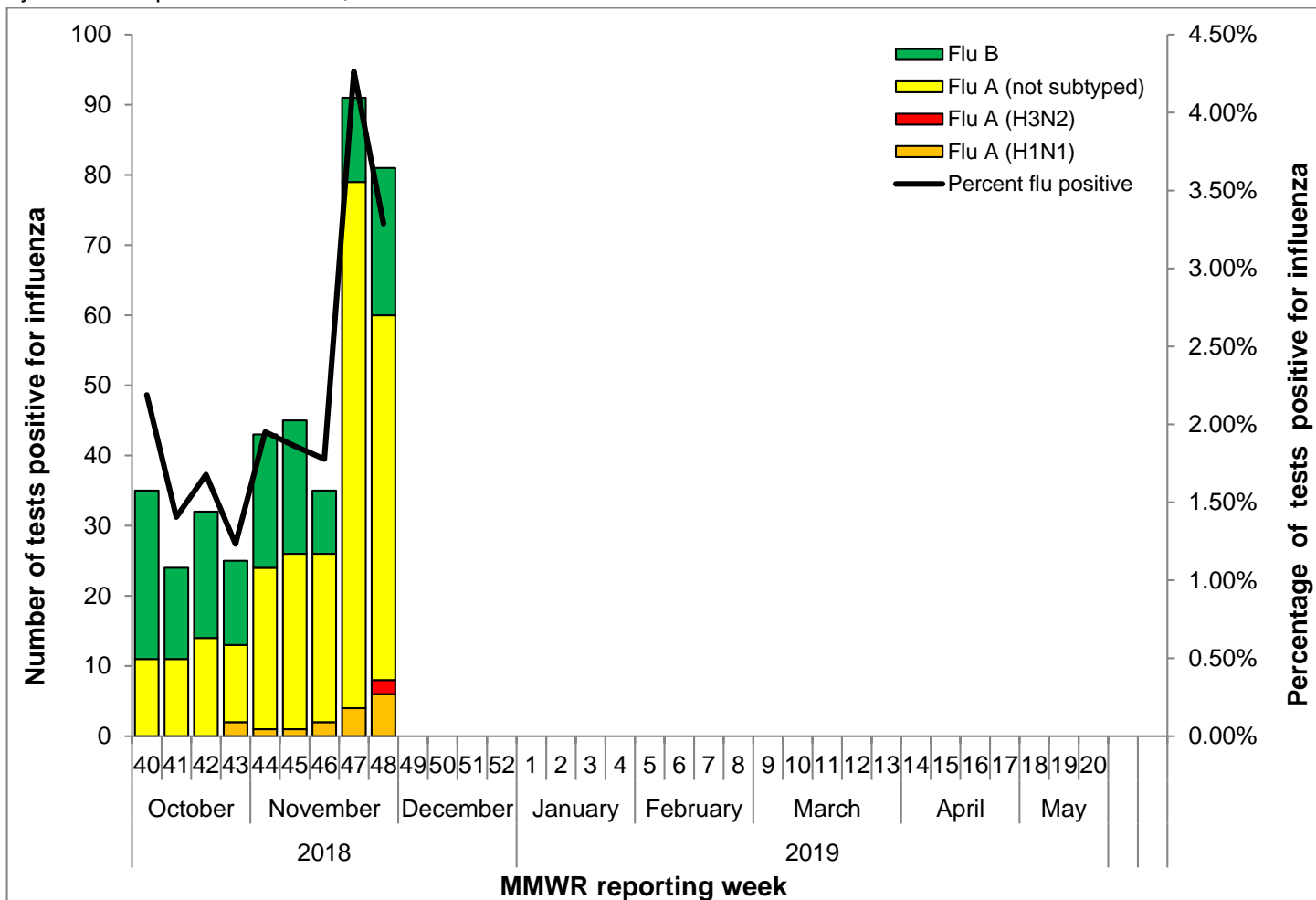


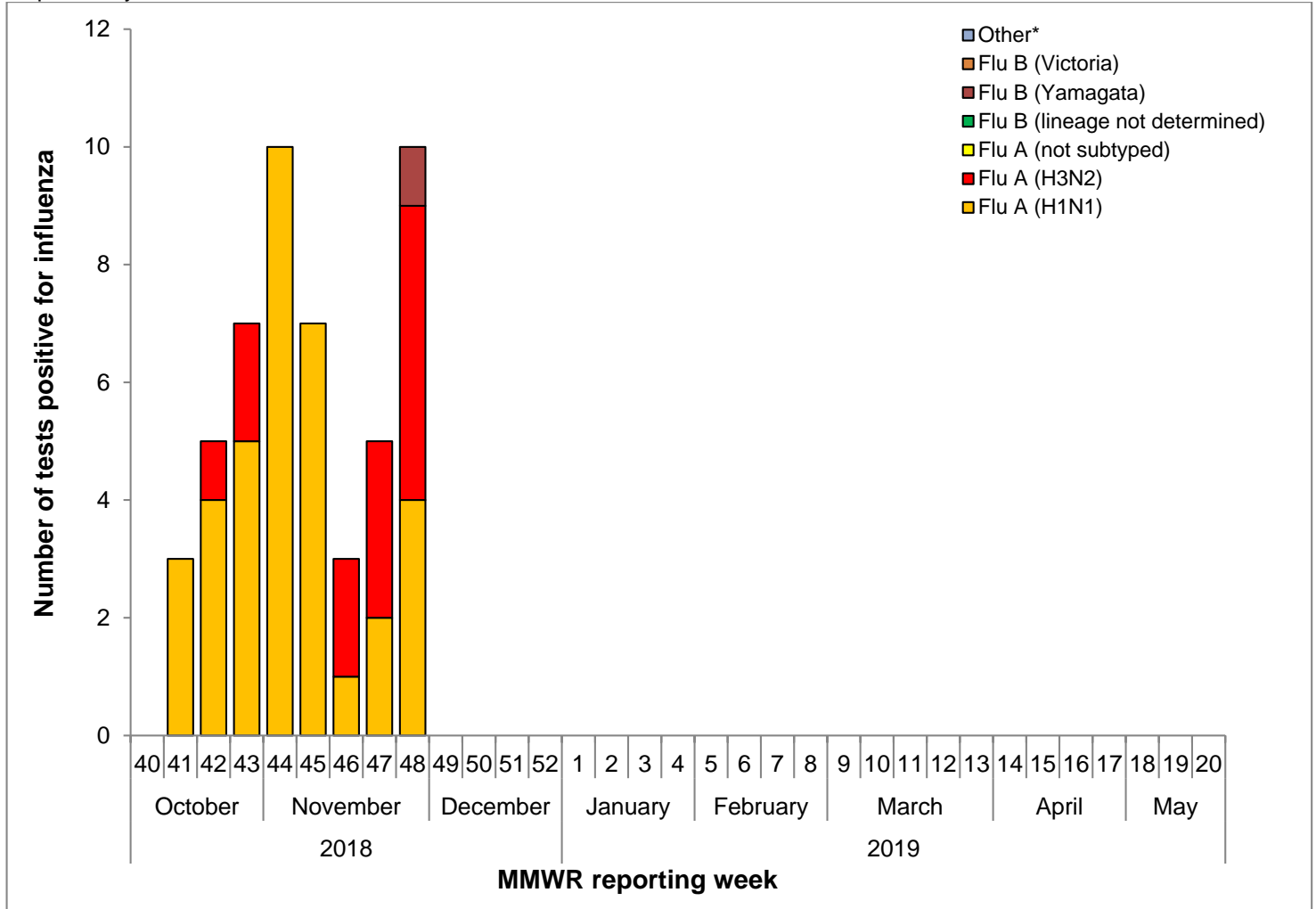
Table 3: Influenza Testing Performed by Texas Public Health Laboratories for the Current Week

	Week 48	Season to Date Week Ending: Dec. 01, 2018
Number of labs reporting flu tests	4	
Number of specimens tested	27	269
Number of positive specimens (%) [†]	10 (37.04%)	50 (18.59%)
Positive specimens by type/subtype/lineage [n (%)]		
Influenza A	9 (90.00%)	49 (98.00%)
Subtyping performed	9 (100.00%)	49 (100.00%)
A (H1N1)	4 (44.44%)	36 (73.47%)
A (H3N2)	5 (55.56%)	13 (26.53%)
Subtyping not performed	0 (0.00%)	0 (0.00%)
Influenza B	1 (10.00%)	1 (2.00%)
Lineage testing performed	0 (0.00%)	1 (100.00%)
B/Victoria	0 (0.00%)	0 (0.00%)
B/Yamagata	1 (100.00%)	1 (100.00%)
Lineage testing not performed	0 (0.00%)	0 (0.00%)
Other*	0 (0.00%)	0 (0.00%)

[†]Laboratory data in 2016-2017 and 2017-2018 season reports may not be comparable to reports from seasons previous to 2016-2017 because the data only includes hospital laboratories data for the current season

*Other denotes specimens with coinfections (i.e. one specimen was positive for both influenza A (H1N1) and influenza A (H3N2))

Figure 2: Number and Percentage of Tests (Antigen, Culture, PCR) Positive for Influenza by Type, Subtype, and Lineage Reported by Texas Public Health Laboratories, 2018-2019 Season



*Other denotes specimens with coinfections (i.e. one specimen was positive for both influenza A (H1N1) and influenza A (H3N2))

Other Respiratory Viruses

The NREVSS system collects information on a variety of respiratory viruses in addition to influenza including parainfluenza virus, respiratory syncytial virus (RSV), rhinovirus, human metapneumovirus (HMPV), seasonal coronavirus, and respiratory adenovirus. The results for the current week are summarized below.

Table 4: Non-Influenza Respiratory Virus Testing Performed by Texas NREVSS Laboratories for the Current Week

Virus	Number of Laboratories Testing	Tests Performed	Positive Tests	Percentage of Tests Positive
Adenovirus (respiratory)	9	987	44	4.46%
HMPV	10	1034	21	2.03%
Parainfluenza virus	10	1187	59	4.97%
Rhinovirus	9	750	197	26.27%
RSV ^{†^}	14	1889	475	25.15%
Seasonal coronavirus (does not include MERS-CoV)	5	635	68	10.71%

[†]RSV tests displayed in the table are a combination of antigen detection, PCR, and culture tests. Some non-NREVSS reporters also contribute to the RSV data.

[^]Numbers and percentage may differ from the weekly RSV report. The weekly RSV report may be accessed at <https://www.dshs.state.tx.us/RSV/disease/rsv-Data.aspx>.

Antigenic Characterization

No antigenic characterization data for Texas specimens are available at this time. The DSHS Laboratory sends a representative sample of influenza viruses to the CDC throughout the flu season.

Antiviral Resistance

No antiviral resistance testing data for Texas specimens are available at this time.

U.S. Outpatient Influenza-like Illness Surveillance Network (ILINet)

Table 5: Texas ILINet Reporting and Patient Visit Summary for the Current Week

Week 48	
Number of providers reporting [†]	102
Number of providers reporting patient visits	102
Number (%) of providers with at least one ILI case	90 (88.24%)
Percentage of all visits due to ILI	3.91%
Texas ILINet baseline [‡] , 2018-2019	5.60%

[†]Reporting providers include both ILINet and RVSP providers.

[‡]The baseline is the mean percentage of patient visits for ILI during non-influenza weeks for the previous three seasons plus two standard deviations. A "non-influenza week" is defined as a week that accounted for less than 2% of the season's total number of specimens that tested positive for influenza

Table 6: Percentage of Visits for Influenza-like Illness Reported by Texas ILINet Providers (as of 12/6/2018 8:50 AM)

Week	Providers Reporting	Number of ILI Cases by Age Group (Years)					Total ILI (all ages)	Total Patients	ILI
		0-4	5-24	25-49	50-64	65+			
201840	113	139	341	169	132	135	916	30116	3.04%
201841	112	155	216	185	116	98	770	29435	2.62%
201842	112	126	275	180	92	120	793	28991	2.74%
201843	109	141	314	203	106	121	885	30054	2.94%
201844	111	167	353	229	121	139	1009	30088	3.35%
201845	111	204	364	239	112	134	1053	30722	3.43%
201846	109	196	346	270	153	122	1087	29612	3.67%
201847	107	161	231	228	130	119	869	21836	3.98%
201848	102	189	347	284	201	164	1185	30297	3.91%

Figure 3: Percentage of Visits Due to Influenza-like Illness Reported by Texas ILINet Participants, 2018-2019 Season

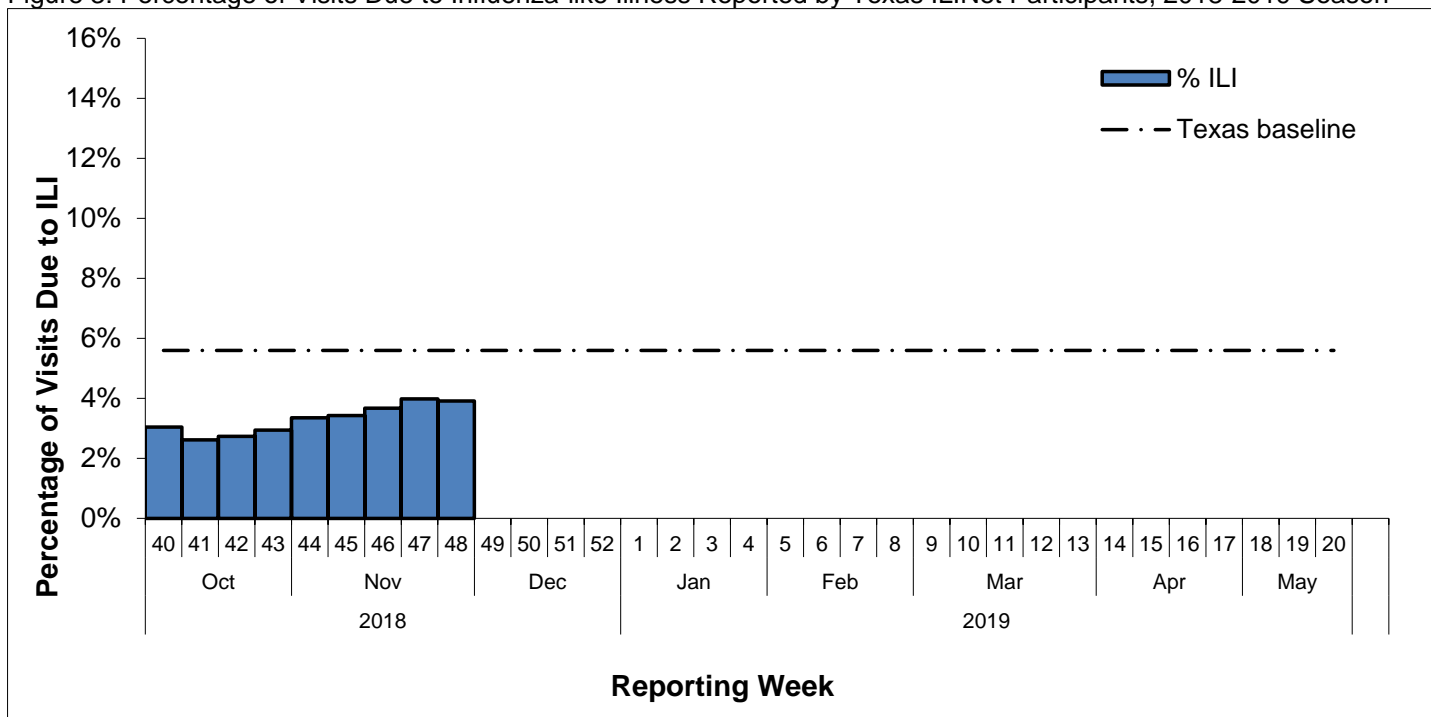
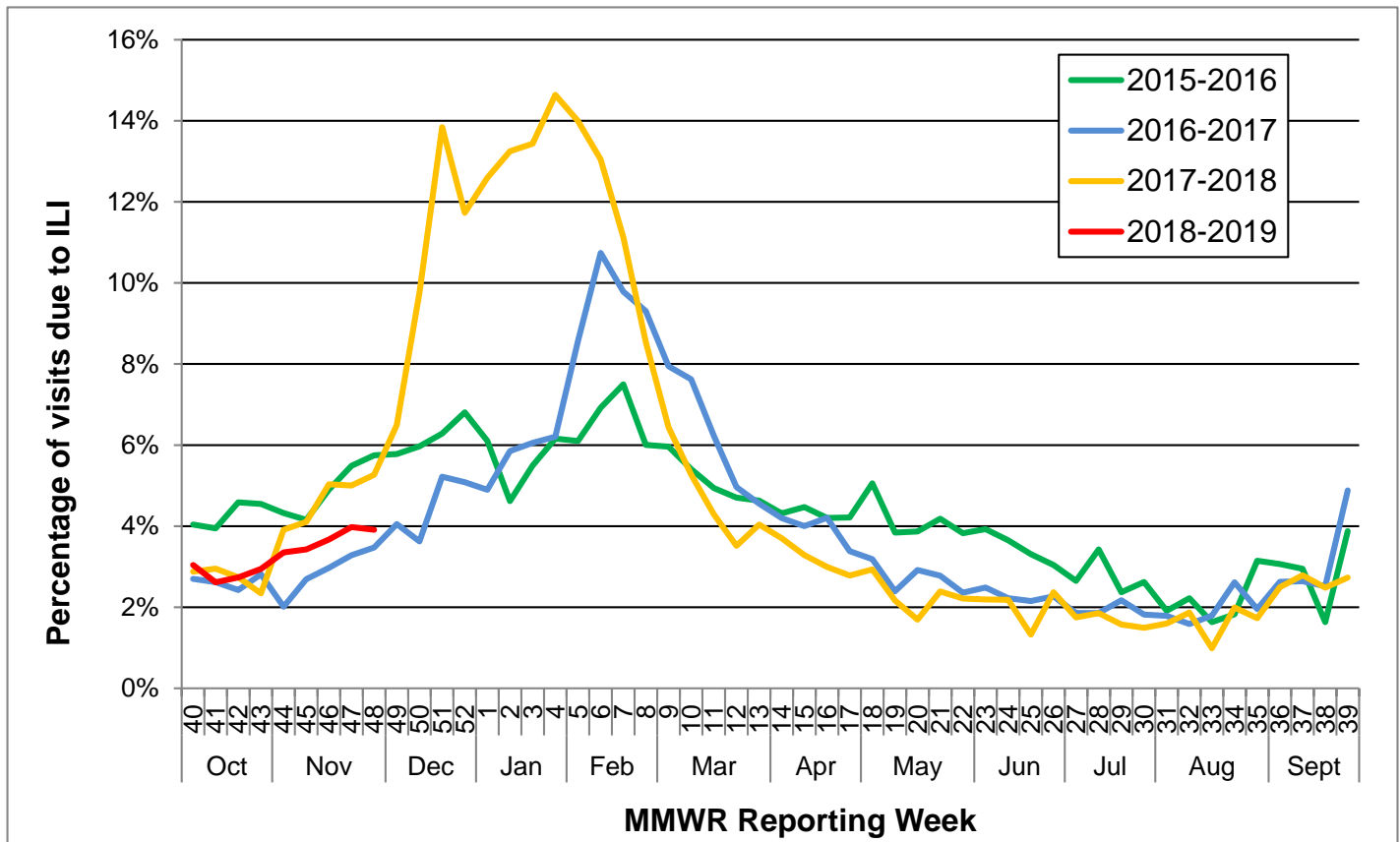


Figure 4: Percentage of Visits Due to Influenza-like Illness Reported by Texas ILINet Participants, 2015–2019 Seasons



Reports from Health Service Regions

Reports were received from all Health Service Regions (HSRs) during week 48.

Table 7: Influenza Activity Compared to week 47 by Health Service Region (HSR)

Influenza Activity Comparison	Health Service Region (HSR)
Increased	1, 2/3, 6/5S, 8, and 9/10
Same	4/5N and 11
Decreased	7
Unsure	

Variant Influenza Viruses

No variant or novel influenza viruses have been detected in Texas during the 2018-2019 season.

Institutional Outbreaks and School Closures

Two ILI or influenza-associated outbreaks were reported for week 48 in HSR 11. One ILI outbreak was reported at a school. Another influenza-associated outbreak was reported at a shelter as well. Control measures included isolation of the ill and educational materials provided.

P&I Mortality Surveillance Data

Pneumonia and influenza (P&I) death data are obtained from death certificates of Texas residents whose underlying or contributing cause(s) of death is reported as pneumonia or influenza. P&I deaths are identified based on ICD-10 multiple cause of death codes. In particular, P&I deaths are based on ICD-10 pneumonia and influenza mortality codes.

Nine hundred and fifteen P&I deaths have been reported in Texas during the 2018-2019 influenza season.

Table 8: Texas P&I Deaths Occurring Sept. 30, 2018- Dec. 06, 2018* by Age

Age Category (years)	Number of P&I Deaths ⁺	Mortality Rate (per 100,000)
0 - 4	<10	0.05
5 - 17	<10	0.05
18 - 49	51	0.38
50 - 64	152	2.93
65 +	708	18.46
Overall	915	3.06

*NOTE: Data are provisional and subject to change, errors, and duplicates

⁺ If the cell count is less than 10, the number of P&I deaths is suppressed and <10 is written in the cell.

Table 9: Texas P&I Deaths Occurring Sept. 30, 2018- Dec. 06, 2018* by Health Service Region (HSR)

HSR	Number of P&I Deaths	Mortality Rate (per 100,000)
1	30	3.22
2/3	272	3.14
4/5N	58	3.54
6/5S	221	2.82
7	105	2.86
8	106	3.43
9/10	50	3.13
11	73	2.91
Overall	915	3.06

*NOTE: Data are provisional and subject to change, errors, and duplicates

Influenza-Associated Pediatric Mortality

No influenza-associated pediatric deaths were reported during week 48.

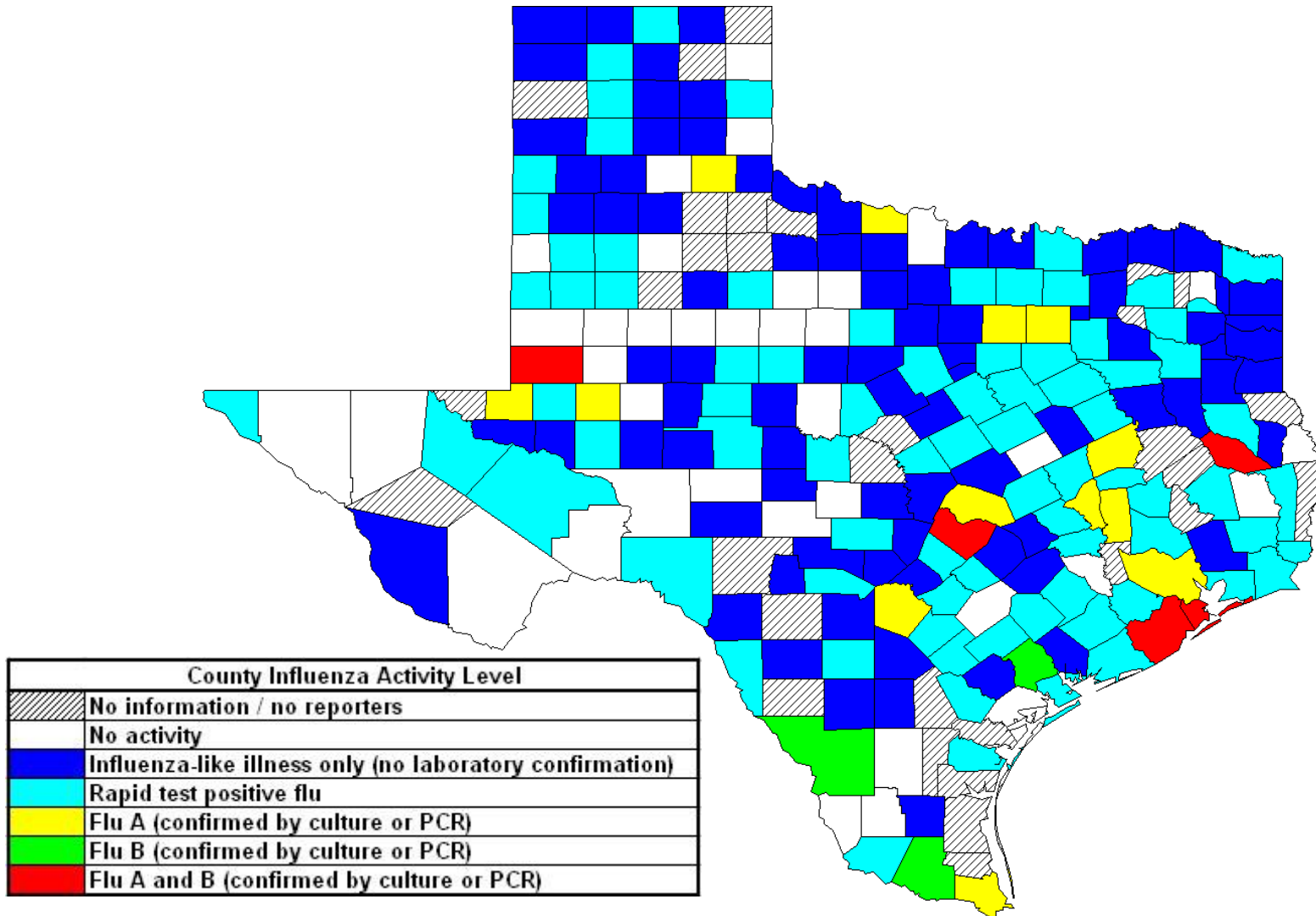
One influenza-associated pediatric death has been reported in Texas during the 2018-2019 influenza season. Cases of influenza-associated pediatric mortality (children <18 years of age) are reportable year-round and by law in Texas.

Table 10: Influenza-Associated Pediatric Deaths Reported in Texas during the 2018-2019 Season

Month of Pediatric Death	Influenza A (H1N1)	Influenza A (H3N2)	Influenza A (Not Subtyped)	Influenza B	Influenza, Not Typed / Not Differentiated	Influenza virus co-infection: A (not subtyped) and B	Total, All Influenza Types / Subtypes
2018							
October	1	0	0	0	0	0	1
November	0	0	0	0	0	0	0
December	0	0	0	0	0	0	0
Total	1	0	0	0	0	0	1

Statewide Influenza Activity Map

Figure 5: Texas Map Displaying the Highest Level of Influenza or ILI Activity Reported by County for the Week Ending Dec. 01, 2018 (MMWR Week 48)



Please note: The majority of influenza cases are not reportable by law in Texas. This map contains data from sentinel sites and only displays influenza and ILI cases that were reported to public health. Positive laboratory results are reported according to specimen collection date, or date received in the laboratory if the former is unknown.

Texas Influenza Surveillance Components and Measures

Activity codes (see <http://www.cdc.gov/flu/weekly/overview.htm>)

Statewide influenza activity level

A code reported weekly by states and territories to CDC indicating the geographic spread of influenza in the state. Levels are no activity, sporadic, local, regional, and widespread.

ILINet Activity Indicator

A statewide level of influenza-like illness intensity (on a scale of 1-10, with 1 being the lowest level) assigned to each state weekly by CDC based on data reported through ILINet.

Morbidity

Novel/variant influenza

Thorough investigations are performed on all cases of novel/variant influenza. *This condition is reportable by law in Texas.*

Texas ILINet

Providers voluntarily report weekly to CDC's ILINet system on the number of outpatient visits for ILI and total outpatient visits. Providers may submit up to 5 specimens per month for influenza testing. See <http://www.dshs.state.tx.us/idcu/disease/influenza/surveillance/ILINet/> for information on how to become an ILINet provider.

ILI activity

Non-ILINet providers report ILI or influenza data weekly to local or regional health departments.

Outbreaks

Healthcare, schools, childcare, and correctional facilities report ILI and influenza outbreaks to health departments in Texas. *This condition is reportable by law in Texas.*

Mortality

Pneumonia and Influenza (P&I) Mortality Surveillance

The DSHS Vital Statistics Unit collects death certificate information for all deaths on Texas residents from various partners such as funeral homes and local registrars around the state. The death certificates are then sent to the National Center for Health Statistics (NCHS) where the cause of death and underlying causes of death on the death certificates are coded with ICD-10 mortality codes. Once death certificates are coded, the information is sent back to DSHS Center for Health Statistics (CHS). CHS produces a Weekly Pneumonia and Influenza (P&I) Death Report and sends it to the State Influenza Surveillance Coordinator for inclusion in the Texas Weekly Flu Report. P&I deaths are identified based on ICD-10 multiple cause of death codes, and in particular, pneumonia and influenza mortality codes. Delays inherent in death reporting and coding practices may cause the number of reported P&I deaths to vary considerably each week.

Influenza-associated pediatric deaths

Deaths that are associated with influenza in children < 18 years of age are reported to health departments in Texas. *This condition is reportable by law in Texas.* <http://www.dshs.state.tx.us/idcu/disease/IAPM/>

Laboratory

DSHS Austin laboratory

Providers voluntarily submit specimens to the DSHS Austin laboratory for influenza PCR testing throughout the season. Providers sign up for this program through their local health departments.

Laboratory Response Network (LRN) laboratories

Providers voluntarily submit specimens to one of the 9 Texas LRNs for influenza PCR testing throughout the season. Providers sign up for this program through their local health departments.

NREVSS

Laboratories voluntarily report influenza and other respiratory virus data weekly through the CDC's online NREVSS reporting system. **Laboratories sign up for this program by contacting DSHS.** <http://www.cdc.gov/surveillance/nrevss/>

Recommended Resources

Texas Department of State Health Services

DSHS influenza page: <http://www.texasflu.org/>

Influenza surveillance data and reports: <http://www.dshs.state.tx.us/idcu/disease/influenza/surveillance/>

Map of Texas Health Service Regions: <http://www.dshs.state.tx.us/regions/state.shtm>

Centers for Disease Control and Prevention

National FluView weekly flu report: <http://www.cdc.gov/flu/weekly/>

Variant influenza viruses: <http://www.cdc.gov/flu/swineflu/variant.htm>

Avian influenza viruses: <http://www.cdc.gov/flu/avianflu/index.htm>

Swine influenza viruses: <http://www.cdc.gov/flu/swineflu/index.htm>

Infection Control in Healthcare Facilities: <http://www.cdc.gov/flu/professionals/infectioncontrol/>

Seasonal Flu Information for Schools and Childcare Providers: <http://www.cdc.gov/flu/school/index.htm>

World Health Organization

Influenza page: <http://www.who.int/topics/influenza/en/>

Disease Outbreak News: <http://www.who.int/csr/don/en/>