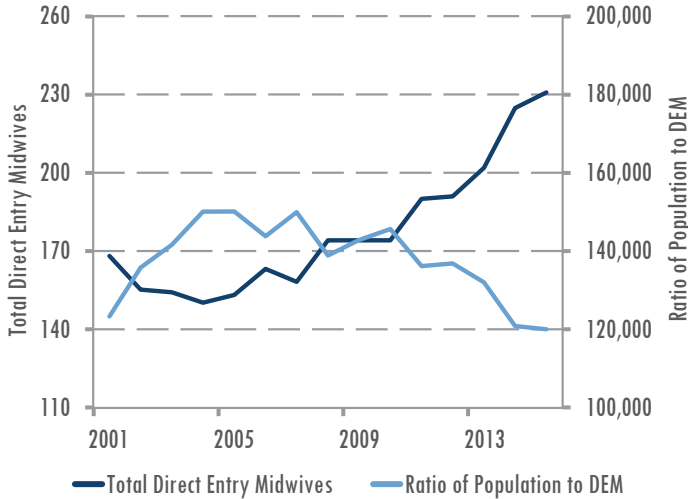




## Direct Entry Midwives

# 2015

### DEM Growth Trends



In 2015, there were 231 actively licensed direct entry midwives (DEM) providing care in Texas.

- This number represented a 32.8% increase since 2010 and a 50.9% increase since 2005.

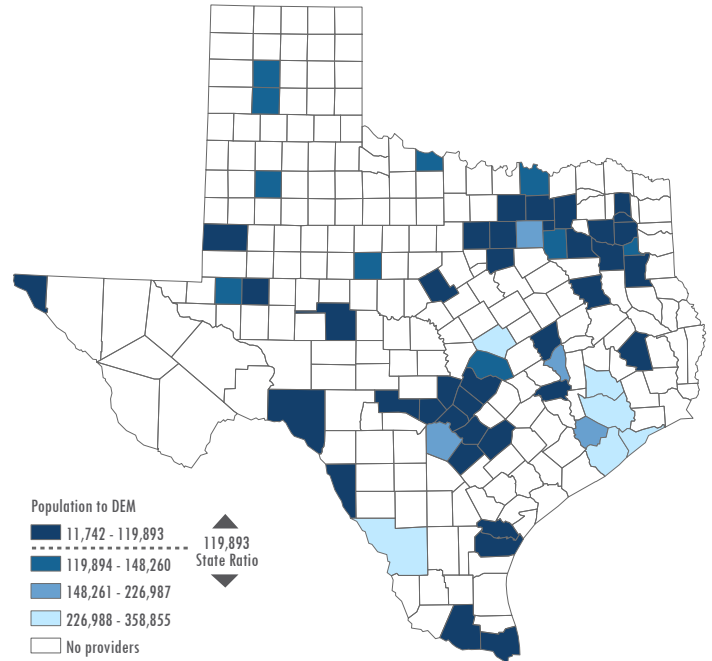
### Age Distribution of DEMs

Age Group	# DEMs	% DEMs
≤25	3	1.3%
26-30	14	6.1%
31-35	44	19.0%
36-40	33	14.3%
41-45	26	11.3%
46-50	25	10.8%
51-55	24	10.4%
56-60	26	11.3%
61-65	25	10.8%
>65	10	4.3%
<b>Total</b>	<b>230<sup>1</sup></b>	<b>100%</b>

- Within ten years, 26.4% of active 2015 DEMs will be at or approaching retirement age.
- Only 4.3% of DEMs were at retirement age in 2015.
- In 2015, 51.9% of the actively licensed DEM workforce was 45 years of age or younger.

<sup>1</sup> Age data were available for 230 of 231 direct entry midwives.

### Ratio of Texas Population to DEM, by County



### Geographic Distribution of DEMs

DEMs were not evenly distributed throughout the state.

- There was a 60.1% difference between the number of DEMs in metropolitan and non-metropolitan areas even after controlling for population differences.
- Between border and non-border areas the percent difference was 62.7%.

Geographic Designation	Ratio of population to DEM
Metropolitan	113,558
Non-metropolitan	211,078
Border	68,649
Non-border	131,280
<b>Texas</b>	<b>119,893</b>

