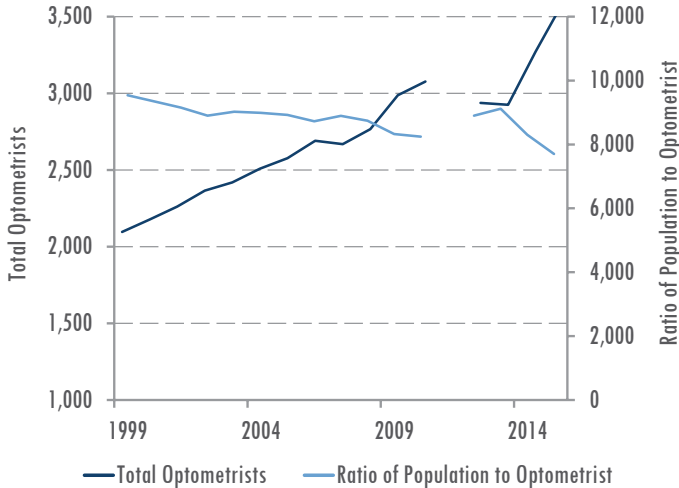




## Optometrists

# 2015

### Optometrist Growth Trends



In 2015, there were 3,596 actively licensed optometrists providing care in Texas.

- This number represented a 16.9% increase since 2010 and a 39.5% increase since 2005.

Despite these improvements, Texas still had fewer optometrists than the national average.

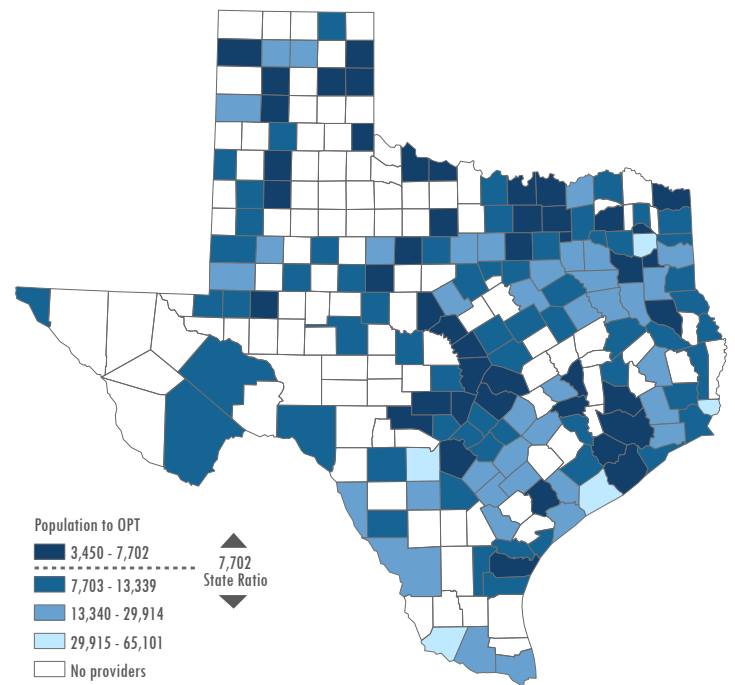
### Age Distribution of Optometrists, by Gender

Age Group	Female	Male	Total
≤30	284	123	407
31-35	378	174	552
36-40	300	217	517
41-45	308	227	535
46-50	201	183	384
51-55	112	191	303
56-60	86	247	333
61-65	57	223	280
>65	15	270	285
<b>Total</b>	<b>1,741</b>	<b>1,855</b>	<b>3,596</b>

Within ten years, 24.9% of the current Texas optometrist workforce will be at or past retirement age.

- Among optometrists over 55 years of age, males comprised 82.4% of the workforce.
- Among optometrists between 41 and 55 years of age, males comprised 49.2% of the optometrist workforce.

### Ratio of Texas Population to Optometrist, by County



Geographic Designation	Ratio of population to optometrist
Metropolitan	7,300
Non-metropolitan	13,416
Border	16,570
Non-border	7,251
<b>Texas</b>	<b>7,702</b>

Optometrists were not evenly distributed throughout the state.

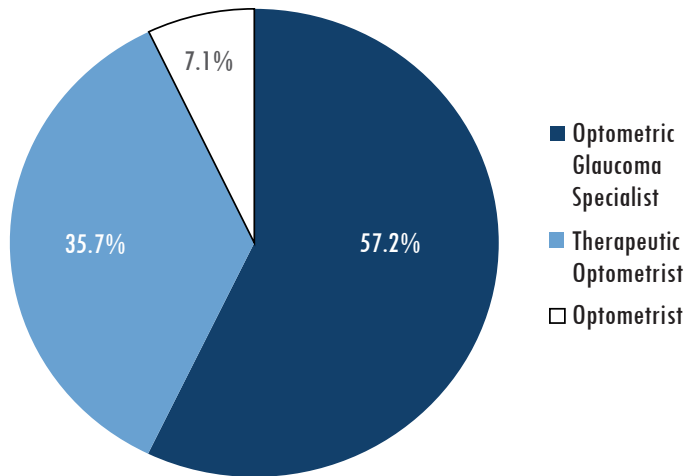
- There was a 59% difference between the number of optometrists in metropolitan and non-metropolitan areas even after controlling for population differences.
- Between border and non-border areas the percent difference was 78.2%.

### Gender of Optometrists

- In 2015, 48.4% of optometrists were female and 51.6% were male.
- In 2005, 37.7% were female and 62.3% were male.
- Among optometrists aged 40 years or younger in 2015, 65.2% were female and 34.8% were male.

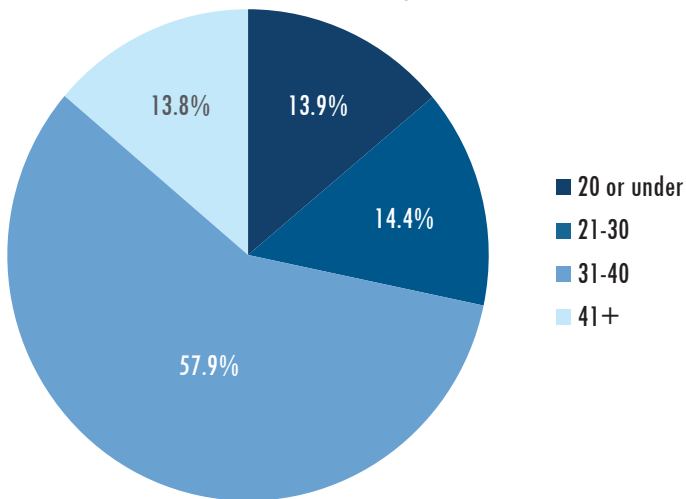


## Employment Characteristics of Optometrists Primary Practice Speciality<sup>1</sup>



<sup>1</sup> Practice speciality data were unavailable for 82 optometrists.

## Hours Worked at Primary Practice<sup>2</sup>



<sup>2</sup> Time data were unavailable for 276 optometrists.

## Employment Characteristics of Optometrists Primary Practice Setting<sup>3</sup>

Setting	# Optometrists	% Optometrists
Private Office	3,075	92.8%
Public Clinic/College/University	120	3.6%
Hospital	39	1.2%
Governmental Facility	36	1.1%
Military Facility	22	0.7%
Nursing Home	13	0.4%
Drug or Ophthalmic Device Company	8	0.2%
Research Facility	2	0.1%
<b>Total</b>	<b>3,315</b>	<b>100%</b>

<sup>3</sup> Practice setting data were unavailable for 281 optometrists.