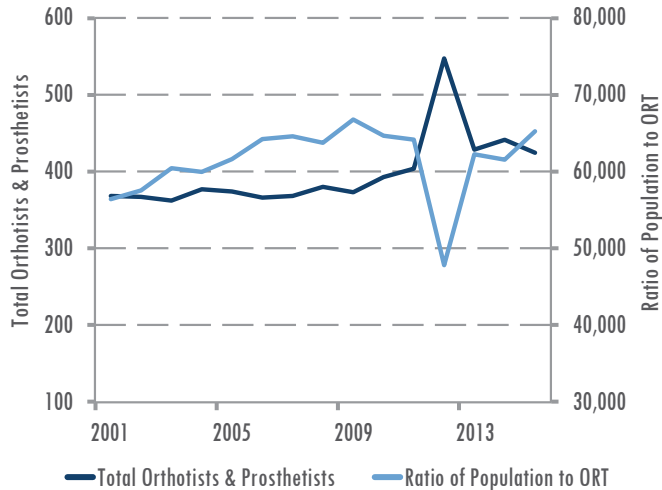




ORT Growth Trends



In 2015, there were 424 actively licensed orthotists and prosthetists (ORT) providing care in Texas.

- This number represented an 8.2% increase since 2010 and a 13.7% increase since 2005.
- Despite these improvements, Texas still had fewer orthotists and prosthetists than the national average.

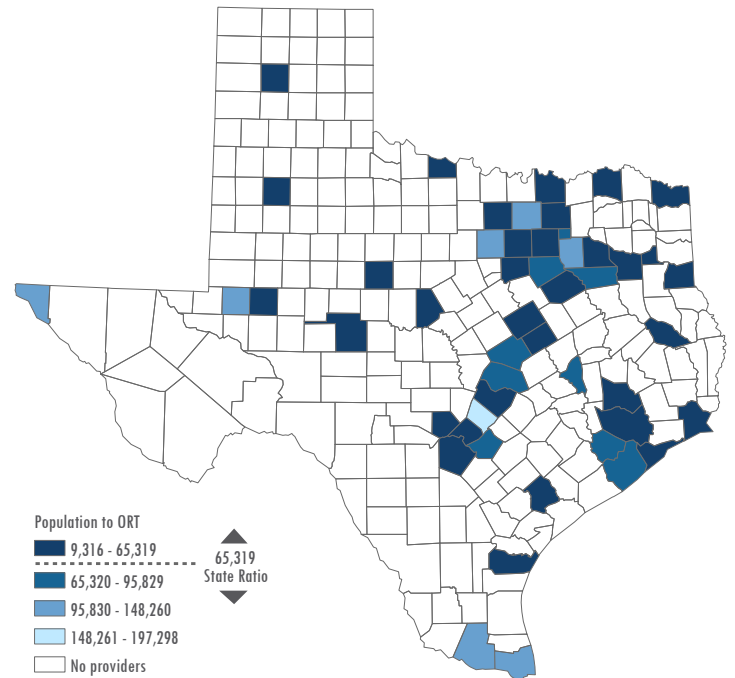
Age Distribution of ORTs

| Age Group | # ORT | % ORT |
|--------------|------------|-------------|
| ≤25 | 1 | 0.2% |
| 26-30 | 30 | 7.1% |
| 31-35 | 44 | 10.4% |
| 36-40 | 43 | 10.1% |
| 41-45 | 57 | 13.4% |
| 46-50 | 70 | 16.5% |
| 51-55 | 63 | 14.9% |
| 56-60 | 41 | 9.7% |
| 61-65 | 46 | 10.8% |
| >65 | 29 | 6.8% |
| Total | 424 | 100% |

Within ten years, 27.4% of ORTs will be at or past retirement age.

- 44.8% of ORTs were between 41 and 55 years of age in 2015.
- 27.8% of ORTs were 40 years of age or younger in 2015.

Ratio of Texas Population to ORT by County



Geographic Distribution of ORTs

ORTs were not evenly distributed throughout the state.

- There was a 97.7% difference between the number of ORTs in metropolitan and non-metropolitan areas even after controlling for population differences.
- Between border and non-border areas the percent difference was 80.5%.

| Geographic Designation | Ratio of population to ORT |
|------------------------|----------------------------|
| Metropolitan | 60,415 |
| Non-metropolitan | 175,898 |
| Border | 144,163 |
| Non-border | 61,416 |
| Texas | 65,319 |

