

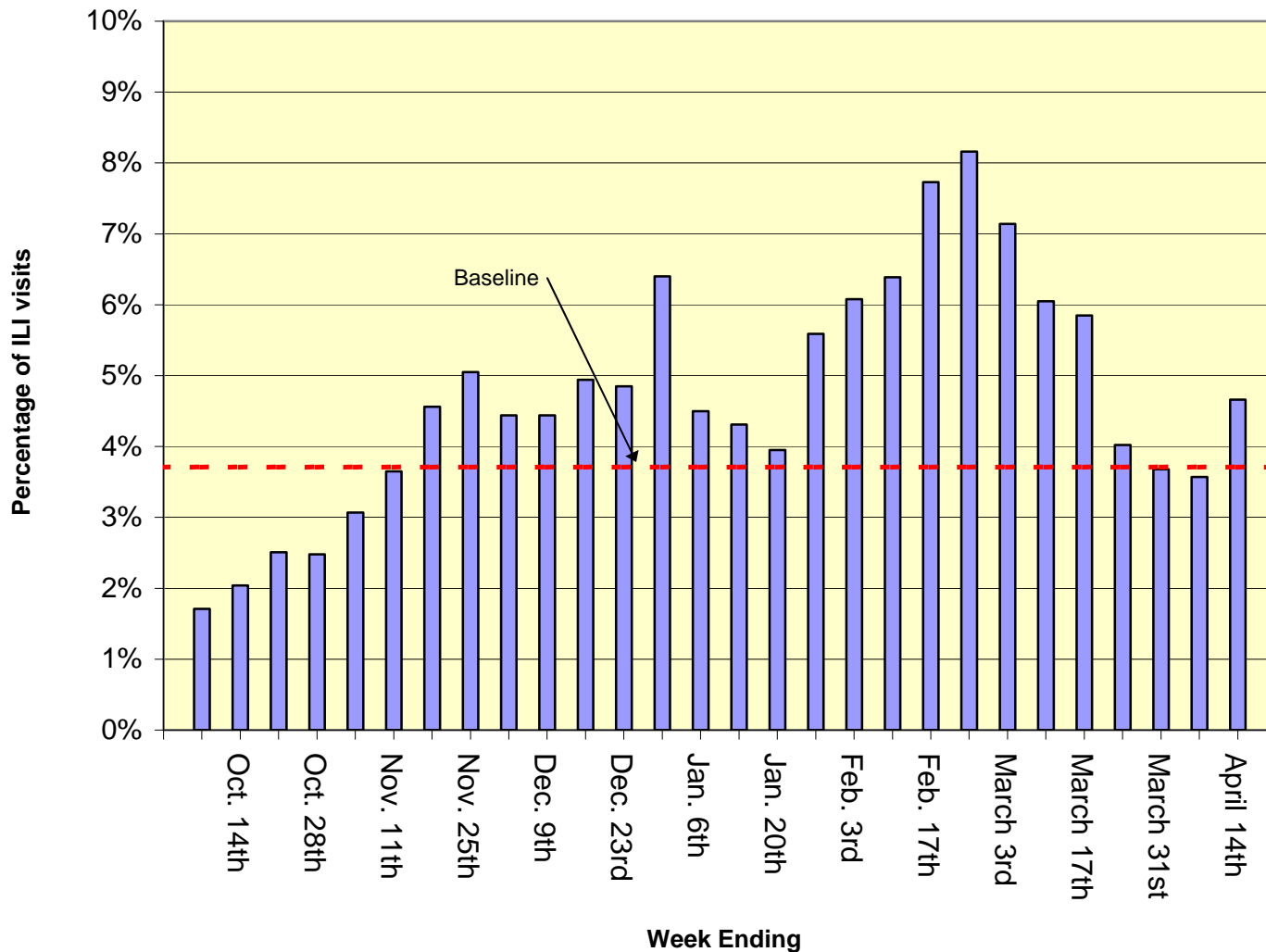


Seventy-seven sentinel providers have reported for week 15. Of all patient visits during this week, 4.66% were due to influenza-like illness (ILI). The baseline for Texas is 3.71%. The baseline is the mean percentage of patient visits for ILI during non-influenza weeks for the previous three seasons plus two standard deviations.

**Percentage of Influenza-Like Illness (ILI) Reported by Sentinel Providers in Texas  
as of 4/25/07**

<b>Week</b>	<b># Reporting</b>	<b>Age 0-4</b>	<b>Age 5-24</b>	<b>Age 25-64</b>	<b>Age over 64</b>	<b>Total ILI</b>	<b>Total Patients</b>	<b>% ILI</b>
2006-40	61	71	120	65	9	265	15479	1.71
2006-41	59	104	126	93	14	337	16457	2.04
2006-42	77	250	187	154	44	635	25223	2.51
2006-43	77	219	188	153	20	580	23296	2.48
2006-44	72	235	254	164	39	692	22504	3.07
2006-45	71	356	249	182	42	829	22660	3.65
2006-46	71	495	312	228	62	1097	24033	4.56
2006-47	76	450	227	237	95	1009	19958	5.05
2006-48	78	442	275	302	70	1089	24495	4.44
2006-49	84	374	325	283	96	1078	24229	4.44
2006-50	72	387	381	252	80	1100	22227	4.94
2006-51	67	349	259	187	50	845	17402	4.85
2006-52	63	460	199	264	104	1027	16039	6.40
2007-01	86	343	221	284	84	932	20681	4.50
2007-02	72	329	244	284	84	941	21819	4.31
2007-03	70	242	223	128	19	612	15461	3.95
2007-04	80	518	475	283	106	1382	24696	5.59
2007-05	82	560	580	380	62	1582	25999	6.08
2007-06	74	479	753	434	43	1709	26741	6.39
2007-07	83	685	755	473	71	1984	25662	7.73
2007-08	82	659	894	558	159	2270	27803	8.16
2007-09	78	589	664	475	132	1860	26039	7.14
2007-10	78	469	501	333	68	1371	22637	6.05
2007-11	68	417	382	407	93	1299	22178	5.85
2007-12	58	194	251	185	27	657	16336	4.02
2007-13	62	213	243	264	72	792	21516	3.68
2007-14	82	270	256	292	84	902	25199	3.57
2007-15	77	315	316	245	105	981	21020	4.66

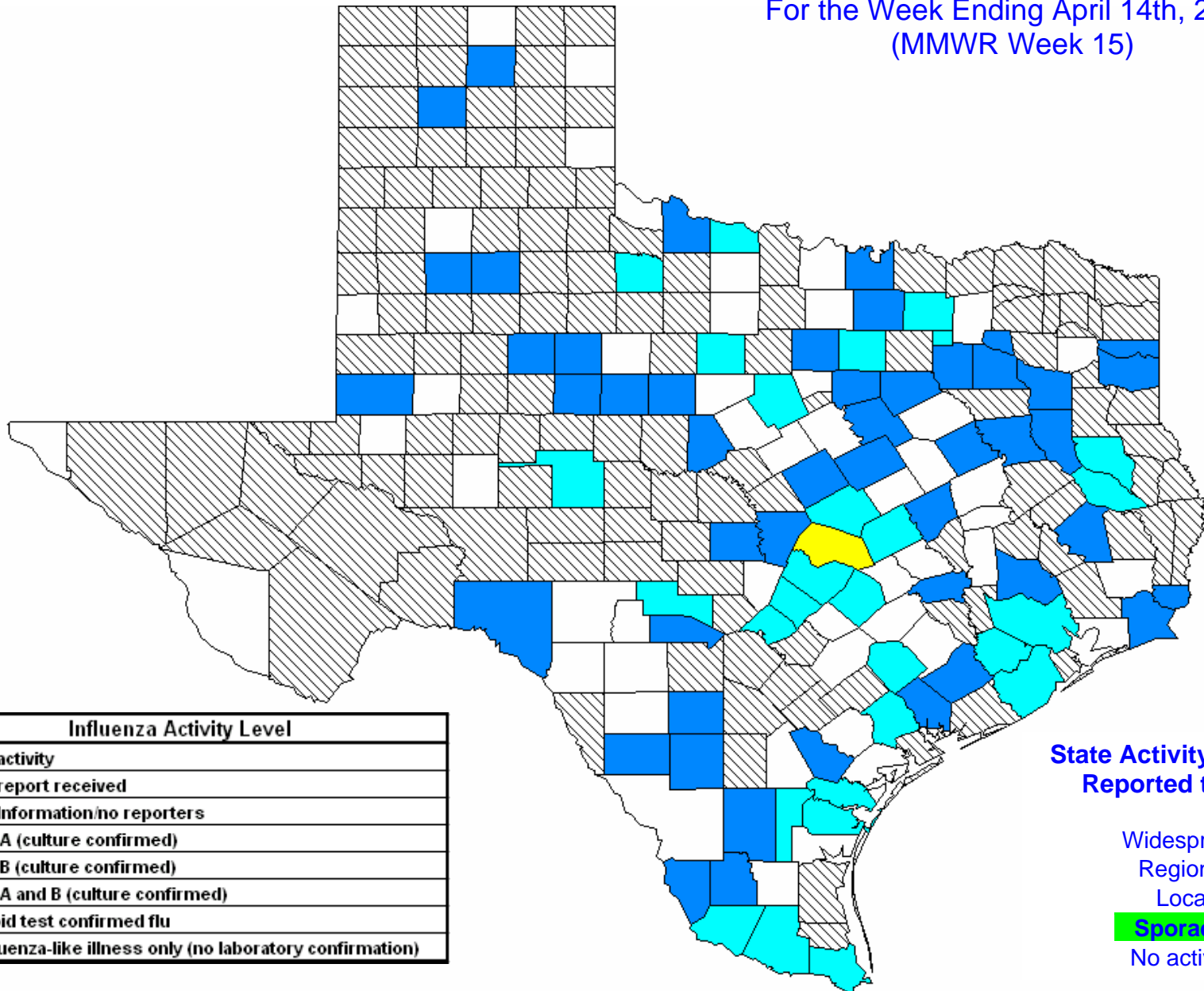
**Percentage of Visits Due to Influenza-Like Illness,  
Texas Sentinel Providers Surveillance Network,  
2006-2007 Season**



For more information on flu surveillance activities in the State of Texas, please visit the following website:

<http://www.dshs.state.tx.us/idcu/disease/influenza/surveillance/>

Statewide Influenza Activity  
For the Week Ending April 14th, 2007  
(MMWR Week 15)



Influenza Activity Level	
White	No activity
Grey	No report received
Diagonal hatching	No information/no reporters
Yellow	Flu A (culture confirmed)
Orange	Flu B (culture confirmed)
Red	Flu A and B (culture confirmed)
Light blue	Rapid test confirmed flu
Dark blue	Influenza-like illness only (no laboratory confirmation)

State Activity Level as Reported to CDC

- Widespread
- Regional
- Local
- Sporadic**
- No activity

\*Influenza activity level corresponds to current MMWR week only and does not reflect previous weeks' activity.