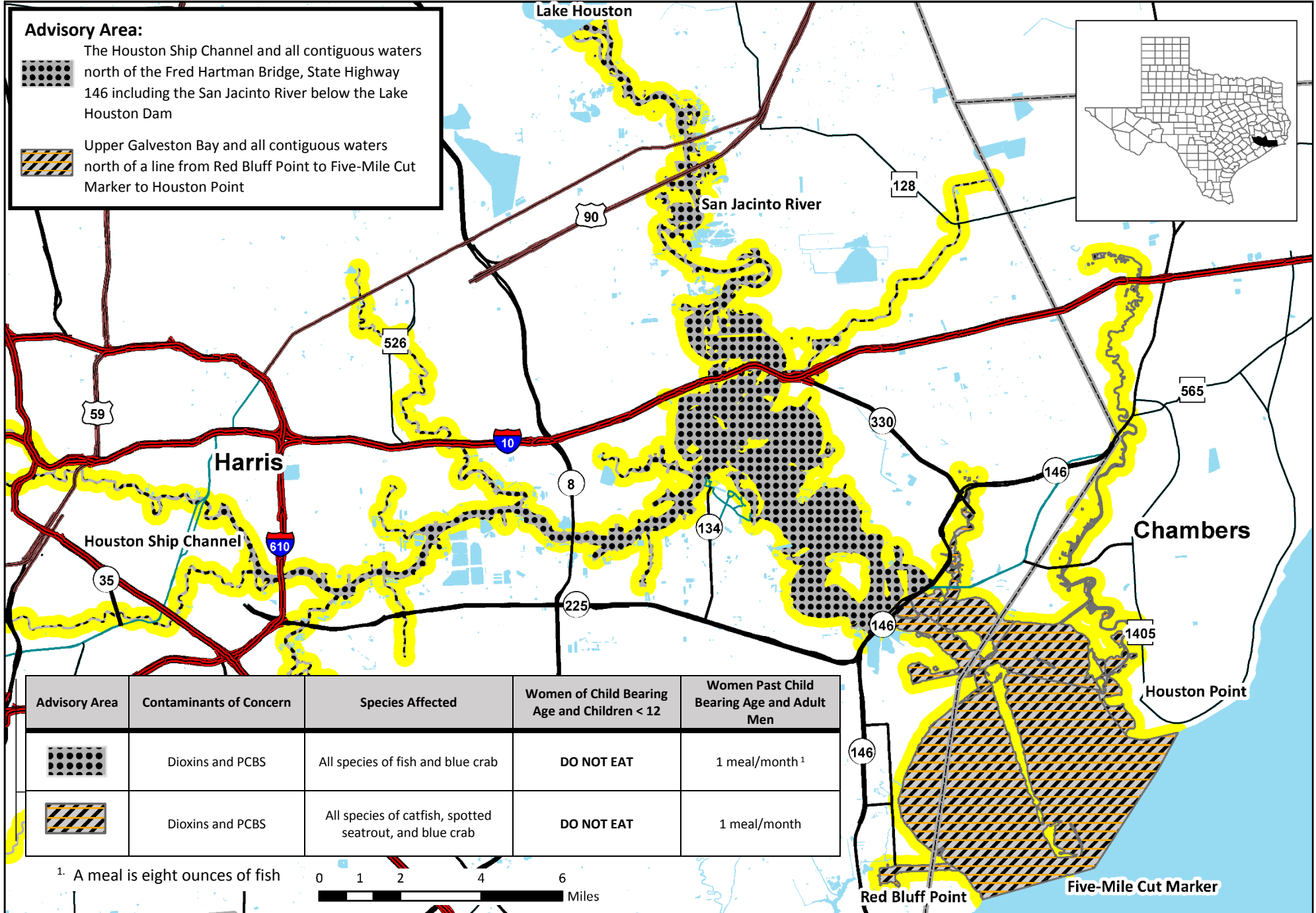



Galveston Bay Estuary (Map 1) – Houston Ship Channel, San Jacinto River, and Upper Galveston Bay


Chambers and Harris Counties



ADV-55 Issued December 18, 2015, Rescinding ADV-49; ADV-50 Issued June 26, 2013



Advisory Area:

 The Houston Ship Channel and all contiguous waters north of the Fred Hartman Bridge, State Highway 146 including the San Jacinto River below the Lake Houston Dam

 Upper Galveston Bay and all contiguous waters north of a line from Red Bluff Point to Five-Mile Cut Marker to Houston Point

Advisory Area	Contaminants of Concern	Species Affected	Women of Child Bearing Age and Children < 12	Women Past Child Bearing Age and Adult Men
	Dioxins and PCBS	All species of fish and blue crab	DO NOT EAT	1 meal/month ¹
	Dioxins and PCBS	All species of catfish, spotted seatrout, and blue crab	DO NOT EAT	1 meal/month

¹ A meal is eight ounces of fish



Red Bluff Point Five-Mile Cut Marker