



**2016 DSHS Arbovirus Activity Report**  
**Week #48 (ending December 3, 2016)**  
**Report Date: December 6, 2016**

**Table 1. 2016 Arbovirus Activity Summary, Texas, Weeks 1-48**

Disease	Positive Mosquito Pools	Avian	Equine	Sentinel Chicken	Human						TOTAL
					Febrile Illness	Neurologic Illness	Severe Dengue	TOTAL (HUMAN)	Deaths	PVD <sup>2</sup>	
California Serogroup <sup>1</sup>	2										2
Chikungunya					18			18			18
Dengue					38		1	39			39
Eastern Equine Encephalitis			6	26							32
St. Louis Encephalitis	1			2							3
West Nile	1773	5	123	17	106	210		316	14	45	2234
Zika <sup>3</sup>											
<b>TOTAL REPORTS</b>	<b>1776</b>	<b>5</b>	<b>129</b>	<b>45</b>	<b>162</b>	<b>210</b>	<b>1</b>	<b>373</b>	<b>14</b>	<b>45</b>	<b>2328</b>

<sup>1</sup>California Serogroup includes California encephalitis, Jamestown Canyon, Keystone, La Crosse, snowshoe hare, and trivittatus viruses.

<sup>2</sup>PVD - Presumptive viremic blood donors are people who had no symptoms at the time of donating blood through a blood collection agency, but whose blood tested positive when screened for the presence of West Nile virus or Zika virus. Unless they meet the case reporting criteria, they are not counted as a case for official reporting purposes and are not included in the "Total" column.

<sup>3</sup>For weekly case counts and additional information related to Zika virus in humans, please visit [www.texaszika.org](http://www.texaszika.org).

**Table 2. 2016 Arbovirus Activity by County, Weeks 1-48**

County	CAL		CHIKV*		DENV*		EEEV				SLEV			WNV							COUNTY TOTAL		
	M	H	M	H	M	H	M	E	SC	H	M	SC	H	M	A	E	SC	H					
																		WNF	WNND	PVD‡		TOTAL	
Anderson																1			1		1	2	
Angelina																		2	4			6	6
Archer																1						1	1
Austin																3							3
Bastrop															1	2		1	2	1		3	6
Bell				1		1								2					2	1		2	6
Bexar				1		1								3					2	1		2	7
Bosque																			2			2	2
Bowie																5		2		1		2	7
Brazoria						1								18		2			2			2	23
Brazos																2		2		1		2	4
Brown						1												1				1	2
Burleson																1						0	1
Burnet						1										1						0	2
Caldwell																1						0	1
Callahan																			1			1	1
Cameron														1								0	1
Camp																1						0	1
Cass								1								2		2				2	5
Cherokee																3			1			1	4
Coke																1						0	1
Collin				3		3								89		1		10	11	1		21	117
<b>Colorado</b>																			1			1	1
Comanche																1						0	1

County	CAL		CHIKV*		DENV*		EEEV				SLEV			WNV							COUNTY TOTAL	
	M	H	M	H	M	H	M	E	SC	H	M	SC	H	M	A	E	SC	H				
																		WNF	WNND	PVD‡		TOTAL
Cooke														3		1					0	4
Coryell														1							0	1
Dallam																				1	0	
Dallas				2		6								703				21	37	2	58	769
Dawson																		1			1	1
Denton	2					2								78		3		10	10	3	20	105
Dimmit																			1		1	1
Eastland																1			1		1	2
Ector						1										1			1		1	3
El Paso														10	2			2	3		5	17
Ellis														31					3		3	34
Erath																3					0	3
Falls																			1		1	1
Fayette																2					0	2
Fort Bend				4		3								1					1	2	1	9
Franklin																2			1		1	3
Freestone																2		1	1		2	4
Gaines																			1		1	1
Galveston				1		1			26			2		3		1	17	1	5	2	6	57
Grayson														49		1		1	5		6	56
Gregg						1								4		1			4	1	4	10
Grimes																4			1		1	5
Guadalupe						1										1				1	0	2
<b>Hansford</b>																			1		1	1

County	CAL		CHIKV*		DENV*		EEEV				SLEV			WNV							COUNTY TOTAL	
	M	H	M	H	M	H	M	E	SC	H	M	SC	H	M	A	E	SC	H				
																		WNF	WNND	PVD‡		TOTAL
Hamilton																		1			1	1
Harris				1		5								97	1	3		3	11	12	14	121
Harrison																1					0	1
Hays						1										1					0	2
Henderson																2			3		3	5
Hockley																		1	1		2	2
Hood																		1			1	1
Hopkins																2		2	2	1	4	6
Hunt														11		2		2	4	1	6	19
Irion																		1	1		2	2
Jasper																2					0	2
Jefferson						1								4				5			5	10
Johnson														15					4		4	19
Knox																			1		1	1
Lamar																1			2		2	3
Lavaca																1					0	1
Lee																1					0	1
Leon																1					0	1
Liberty																			2	1	2	2
Limestone																1			1		1	2
Lubbock						2								4				1			1	7
Madison																1					0	1
McLennan				1		1										1		3	4		7	10
McMullen																1					0	1
Montgomery														2		4		2	6	1	8	14

County	CAL		CHIKV*		DENV*		EEEV				SLEV			WNV							COUNTY TOTAL	
	M	H	M	H	M	H	M	E	SC	H	M	SC	H	M	A	E	SC	H				
																		WNF	WNND	PVD‡		TOTAL
Morris																3				0	3	
Nacogdoches																3				0	3	
Navarro																		1	4		5	5
Newton																			1		1	1
Nueces						1				1				24					4		4	30
Orange								1						4				1		1	1	6
Palo Pinto																1			2		2	3
Parker																1			2		2	3
Pecos																			1		1	1
Polk																1			2		2	3
Presidio																			1		1	1
<b>Rains</b>																			1		1	1
Randall																1		1			1	2
Red River																			1	1	1	1
Rockwall														21		1			1		1	23
Runnels																			1		1	1
Rusk																			2		2	2
San Jacinto																3					0	3
Shelby																1					0	1
Smith								3						5	1	4		1	4	1	5	18
Stonewall																1					0	1
Tarrant				2		1								558		1		15	28	4	43	605
Taylor																1					0	1
Throckmorton																1					0	1
Titus																2		1		1	1	3

County	CAL		CHIKV*		DENV*		EEEV				SLEV			WNV								COUNTY TOTAL
	M	H	M	H	M	H	M	E	SC	H	M	SC	H	M	A	E	SC	H				
																		WNF	WNND	PVD‡	TOTAL	
Tom Green																1				0	1	
Travis				1		4								15		1		3			3	24
Trinity																2		1			1	3
Tyler								1													0	1
Upshur																3				1	0	3
Van Zandt																2		1			1	3
Victoria																1					0	1
Waller																7			2		2	9
Washington																3				1	0	3
Webb														3							0	3
Wharton																			1	1	1	1
Wichita														2		1					0	3
Williamson				1										12		1			1		1	15
Wilson																			1		1	1
Wood																		3	1		4	4
Total Number of Reports	2	0	0	18	0	39	0	6	26	0	1	2	0	1773	5	123	17	106	210	45	316	2328

M - mosquito A-avian E-equine SC- sentinel chicken H- human WNF - West Nile Fever WNND - West Nile Neuroinvasive Disease

CAL - California Serogroup Viruses

CHIKV - Chikungunya Virus

DENV - Dengue Virus

EEEV - Eastern Equine Encephalitis Virus

SLEV - St. Louis Encephalitis Virus

WNV - West Nile Virus

\*All reported cases are imported.

‡PVDs are not included in any of the "Total" columns.

Figure 1. Texas Counties Reporting any Arbovirus Activity, Weeks 1-48

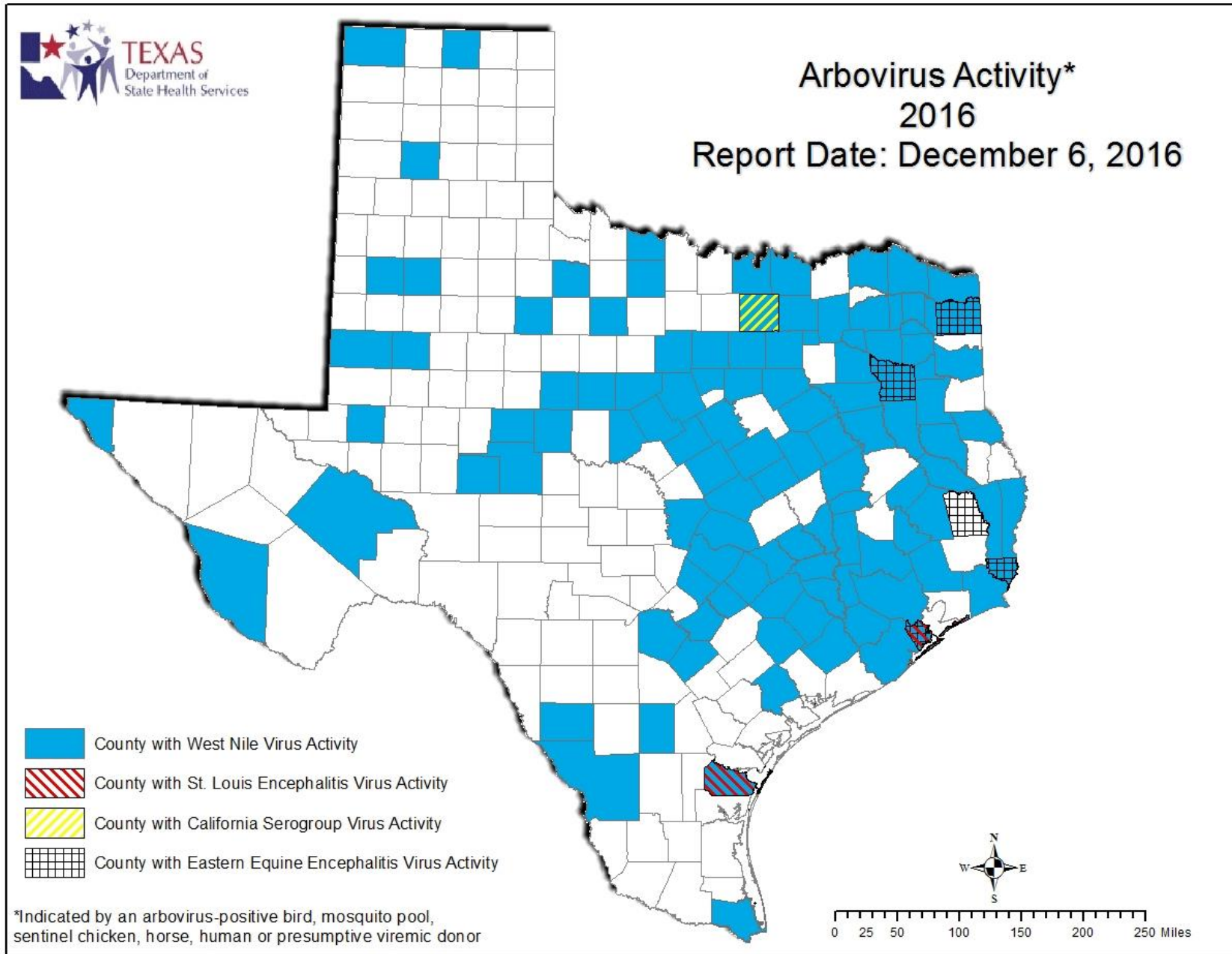


Figure 2. Epidemiologic Curve of Mosquito WNV Activity, 2014-2016

### WNV-Positive Mosquito Pools Reported in Texas, by MMWR Week, 2014-2016

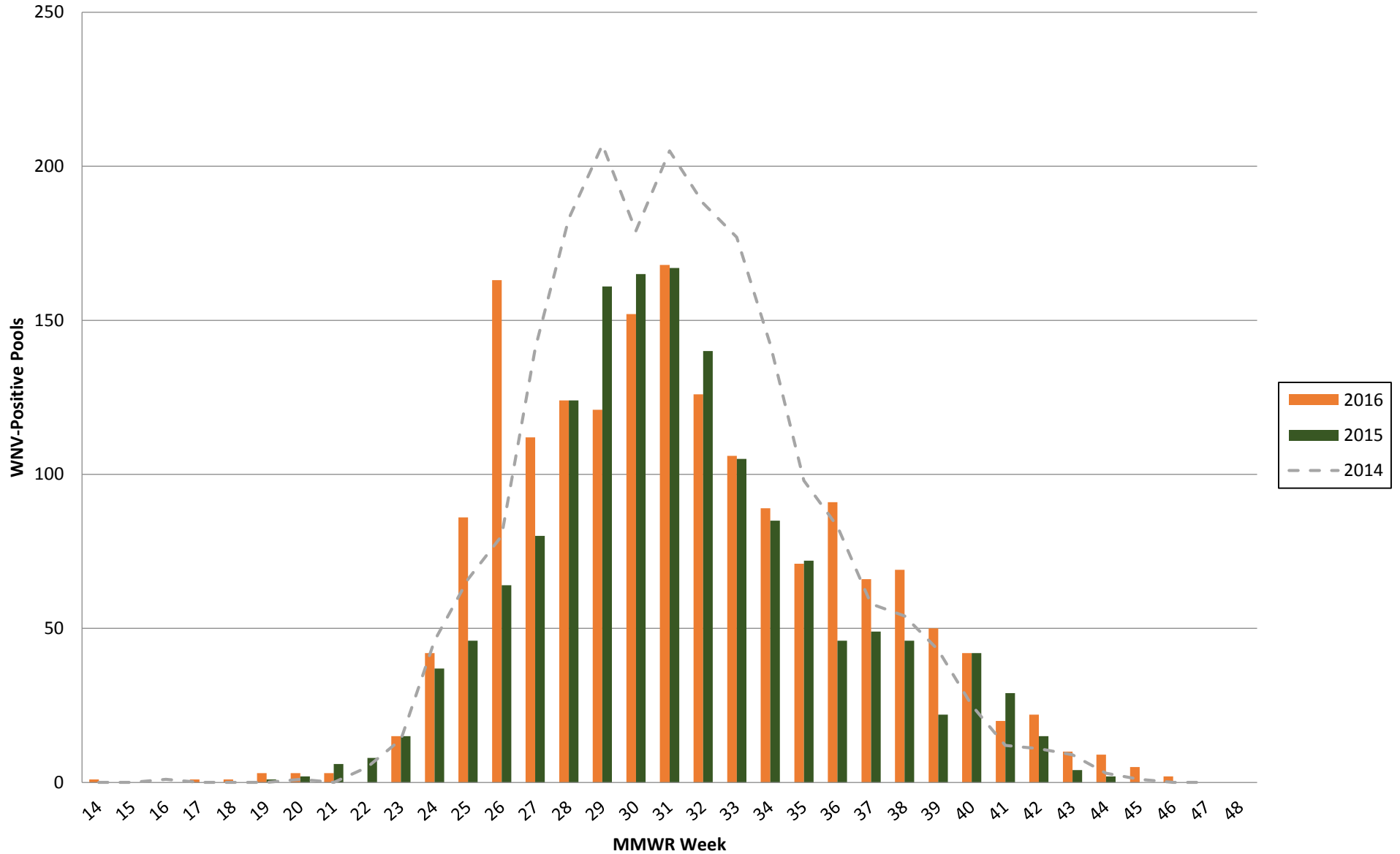




Figure 3. Epidemiologic Curve of Human WNV Activity, 2014-2016

