



**2021 DSHS Arbovirus Activity Report
Week #36 (ending September 11, 2021)
Report Date: September 14, 2021**

Table 1. 2021 Arbovirus Activity Summary, Texas, Week 36

Arbovirus	Positive Mosquito Pools	Avian	Equine	Sentinel Chicken	Human					
					Febrile Illness	Neurologic Illness	Severe Dengue	TOTAL (HUMAN)	Deaths	PVD ²
California Serogroup ¹								0		
Chikungunya								0		
Dengue					4			4		
Eastern Equine Encephalitis	2		1					0		
St. Louis Encephalitis	31							0		
West Nile	1146	10	1	1	2	14		16	2	28
Zika								0		
TOTAL REPORTS	1179	10	2	1	6	14	0	20	2	28

¹California Serogroup includes California encephalitis, Jamestown Canyon, Keystone, La Crosse, snowshoe hare, and trivittatus viruses.

²PVD - Presumptive viremic blood donors are people who had no symptoms at the time of donating blood through a blood collection agency, but whose blood tested positive when screened for the presence of West Nile virus or Zika virus. Unless they meet the case reporting criteria, they are not counted as a case for official reporting purposes and are not included in the "Total (HUMAN)" column.

Note: Human mortality from arboviral conditions is aggregated and reported monthly once documentation has been received and verified.

For more detailed information about West Nile virus, including past weekly and annual reports, please visit

<http://www.dshs.texas.gov/idcu/disease/arboviral/westNile/>

For more detailed information about Zika, please visit <http://www.texaszika.org/>

Table 2. 2021 Aedes-Associated Arbovirus Activity by County†, Week 36

County	CHIKV		DENV*		ZIKV		
	M	H	M	H	M	H	PVD
Collin				1			
Montgomery				1			
Tarrant				1			
Travis				1			
Total Number of Reports	0	0	0	4	0	0	0

M - mosquito H- human

CHIKV - Chikungunya Virus

DENV - Dengue Virus

ZIKV - Zika Virus

* All reported cases are imported.

†County level data is not reported for conditions with <5 cases reported in a year.

Table 3. 2021 Other Arbovirus Activity by County†, Week 36

County	CAL		EEEV				SLEV			WNV							
	M	H	M	E	SC	H	M	SC	H	M	A	E	SC	H			
														WNF	WNND	PVD‡	TOTAL
Armstrong										0						1	0
Bexar										1					1	1	1
Brazoria										7							0
Brazos										10					1	0	
Cameron										1							0
Carson										0					1	0	
Childress										0					1	0	
Collin										37							0
Cooke										1							0
Dallas										275				1	8	2	9
Denton										40					1		1
El Paso							26			30					1	0	
Ellis										8					1	0	
Fort Bend										10					1	1	1
Galveston							5			4			1		1	1	1
Grayson										1							0
Harris										299	10					10	0
Hood										0		1					0
Hunt										12							0
Jasper			1	1						0							0
Johnson										45					1	0	
Kleberg										8							0
Montgomery										106					2	1	2
Nueces										21							0
Orange			1							0							0
Parker										0					1	0	
Potter										0					1	0	
Randall										0					2	0	
Tarrant										211				1	1	1	1
Travis										4							0
Wichita										8							0
Williamson										7							0
Total Number of Reports	0	0	2	1	0	0	31	0	0	1146	10	1	1	2	14	28	16

M - mosquito A-avian E-equine SC- sentinel chicken H- human WNF - West Nile Fever WNND - West Nile Neuroinvasive Disease

CAL - California Serogroup Viruses

EEEV - Eastern Equine Encephalitis Virus

SLEV - St. Louis Encephalitis Virus

WNV - West Nile Virus

†County level data is not reported for conditions with <5 cases reported in a year.

‡PVDs are not included in the "Total" column.

Figure 1. Texas Counties Reporting Arbovirus Activity, Week 36

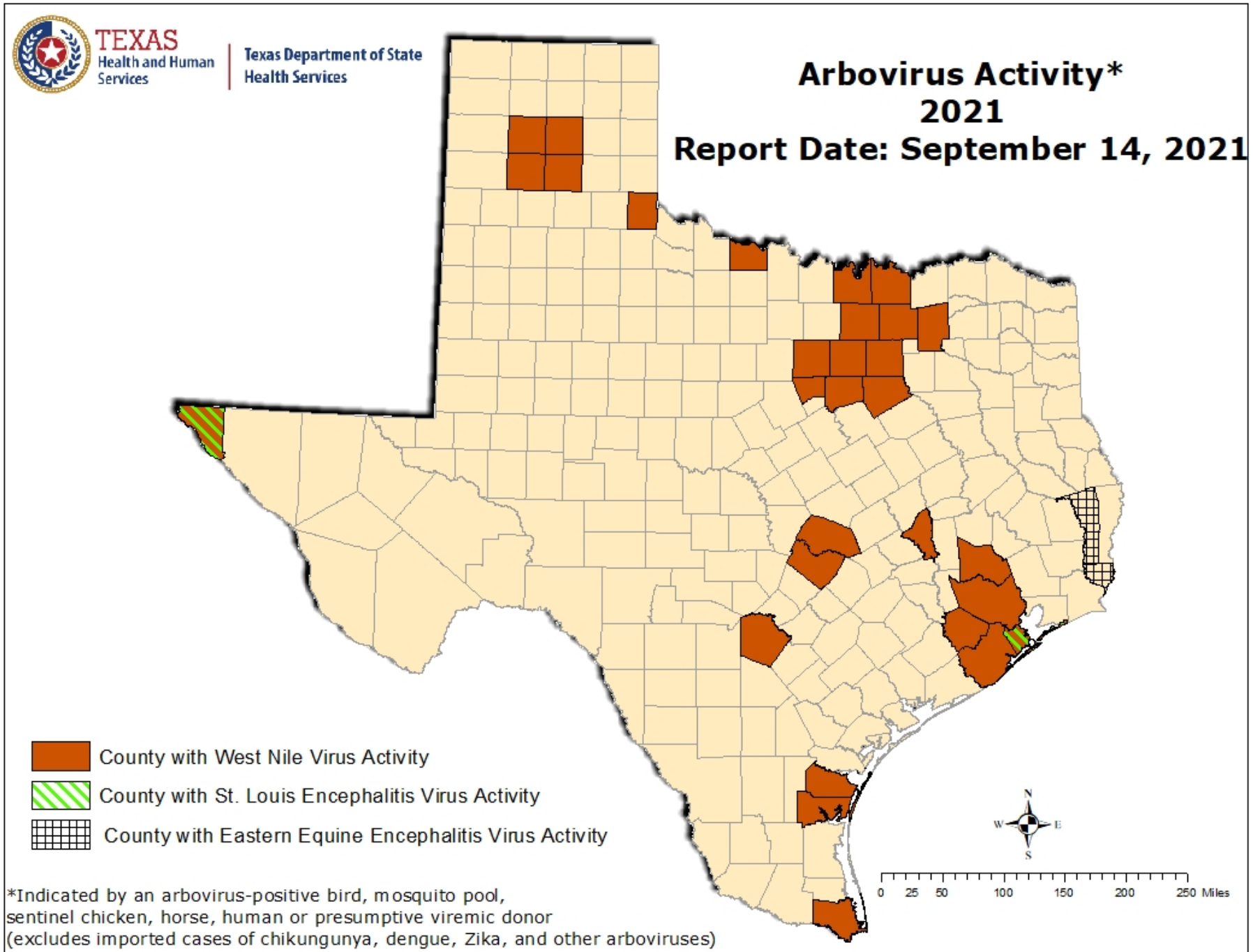


Figure 2. WNV-Positive Mosquito Pools Reported in Texas, by MMWR Week of Collection, 2019-2021, Week 36

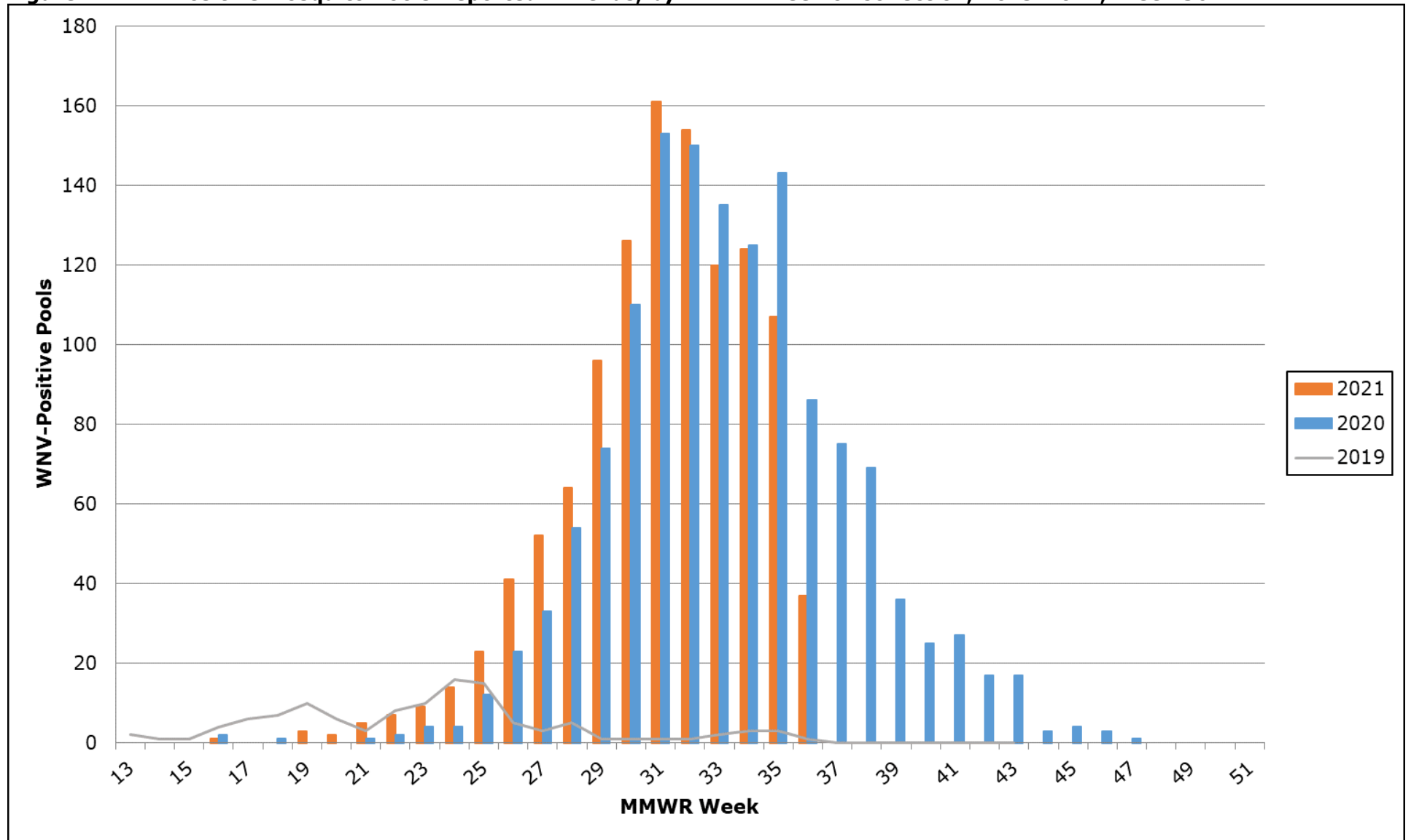


Figure 3. Human Cases of West Nile Virus Reported in Texas, by MMWR Week of Onset, 2019-2021, Week 36

