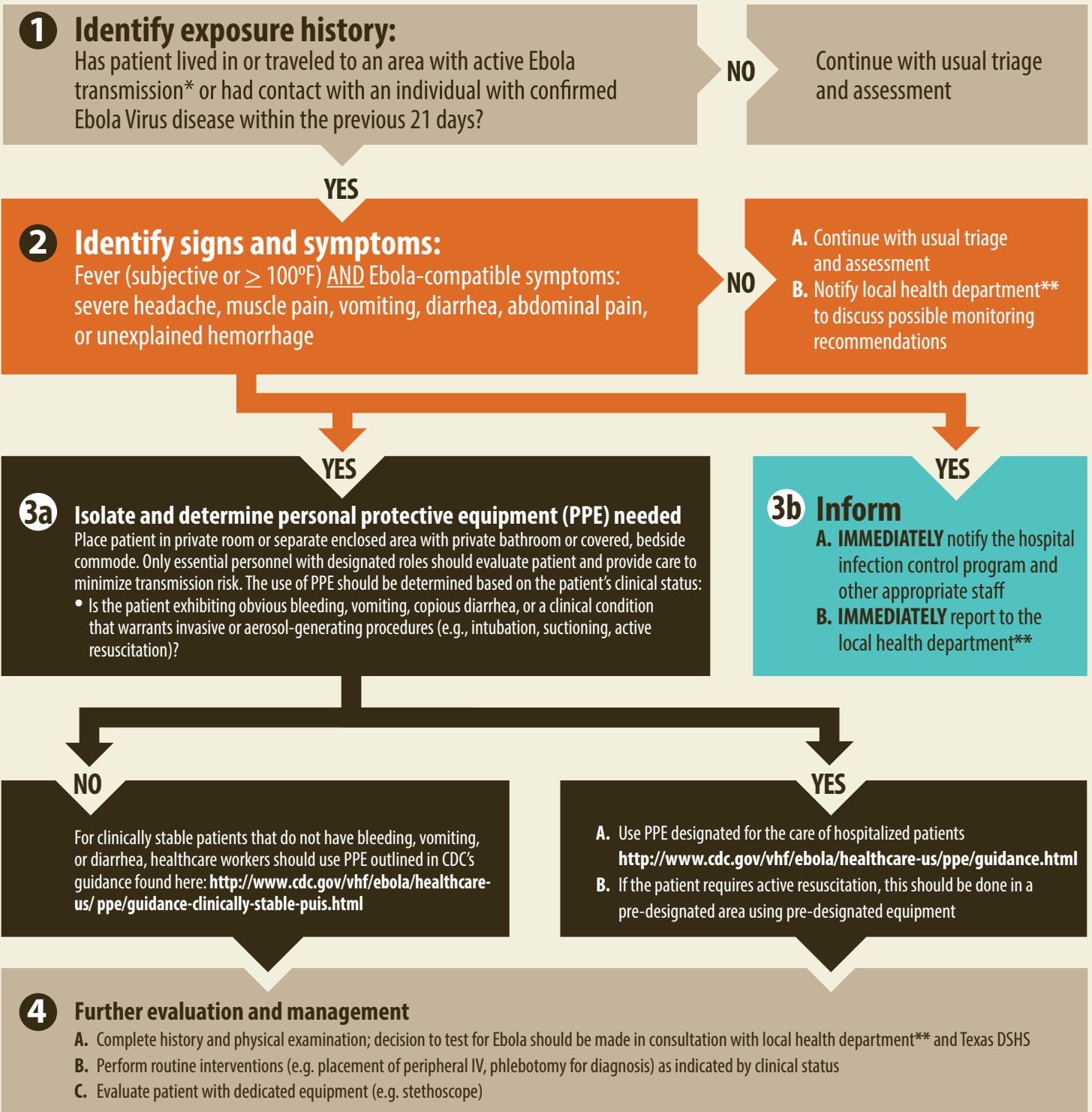


Identify, Isolate, Inform: Emergency Department Evaluation and Management of Patients Under Investigation for Ebola Virus Disease



Adapted from algorithm developed by CDC in collaboration with American College of Emergency Physicians and Emergency Nursing Association

* For more information about areas with active Ebola transmission, call your local health department**

** Find your Local Health Department: <http://www.dshs.texas.gov/idcu/investigation/conditions/contacts/>

