



CITY OF SAN ANTONIO  
**METROPOLITAN HEALTH DISTRICT**

# **Small Influenza Outbreak at an Elementary school**

Kamesha Owens, MPH  
Epidemiologist  
San Antonio Metropolitan Health District

August 16, 2016

# Topics

- Summary of Events
- School Information
- Case definitions
- Case summary
- Summary of Outbreak
  - Grades Affected
  - Common Reported Symptoms
  - Epi Curve
- Issues
- Lessons Learned
- Questions?



# Summary of Events

- 3/2/16: Received a phone call from the school nurse that 4 students in the same class were reported to have tested positive for influenza; class size is 22 students.
  - SAMHD follow up with the nurse and asked if she could create a list with student name, demos, contact information and parent name.
  - Initial line list was faxed on 3/3/2016
  - Notice to Parents had already been sent out before the school notified SAMHD
- Use the line list to call parents to obtain doctor information, and to obtain symptoms, vaccine history and if treatment was given.
- Prevention information was given verbally over the phone to each parent called and other printed as well as electronic resources from the CDC.gov

# School Information

- This school is a tuition-free public charter academy that is apart of the Texas-Science, Technology, Engineering, and Mathematics (T-STEM) program
- It serves K-5 grades only
- Class sizes average around 22 students
- Approximate total population for the school is 250 students.

# Case Definitions

- Confirmed: Student or staff at elementary charter school that is clinically compatible and laboratory confirmed and has an onset date between 2/25/2016 and 3/6/2016
- Probable: Student or staff at elementary charter school that is clinically compatible and has no lab and has an onset date between 2/25/2016 and 3/6/2016

# Case Summary

## Confirmed and Probable cases

	Students	Staff
Confirmed	6	1
Probable	4	0
Totals	10	1

N=11

# Summary of Outbreak

- The index case was never laboratory confirmed but was sent home by the nurse for ILI. Mom did not vaccinate.
- All the cases who were tested were confirmed via rapid influenza testing
  - Almost all who were tested including the TA were positive for Influenza B
    - One student was reported Influenza A positive
- 3 out of 11 cases reported were vaccinated against influenza
- 7 out of 11 cases reported were prescribed Tamiflu



# Grades Affected

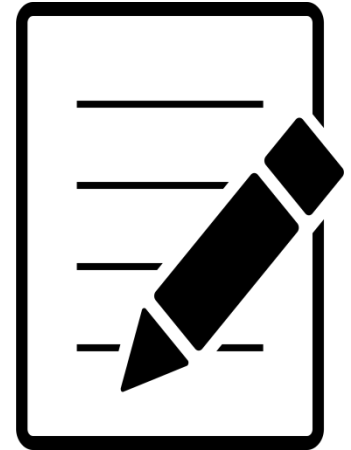
- 6 in class room A – 1<sup>st</sup> grade
- 1 in classroom B-1<sup>st</sup> grade
- 1-2<sup>nd</sup> grader
- 1-4<sup>th</sup> grader
- 1-kindergartener(sibling of 1<sup>st</sup> grader)
- 1-Teacher's assistant (TA) who worked helped in the library and lunch room in conjunction with the 1<sup>st</sup> grade classrooms





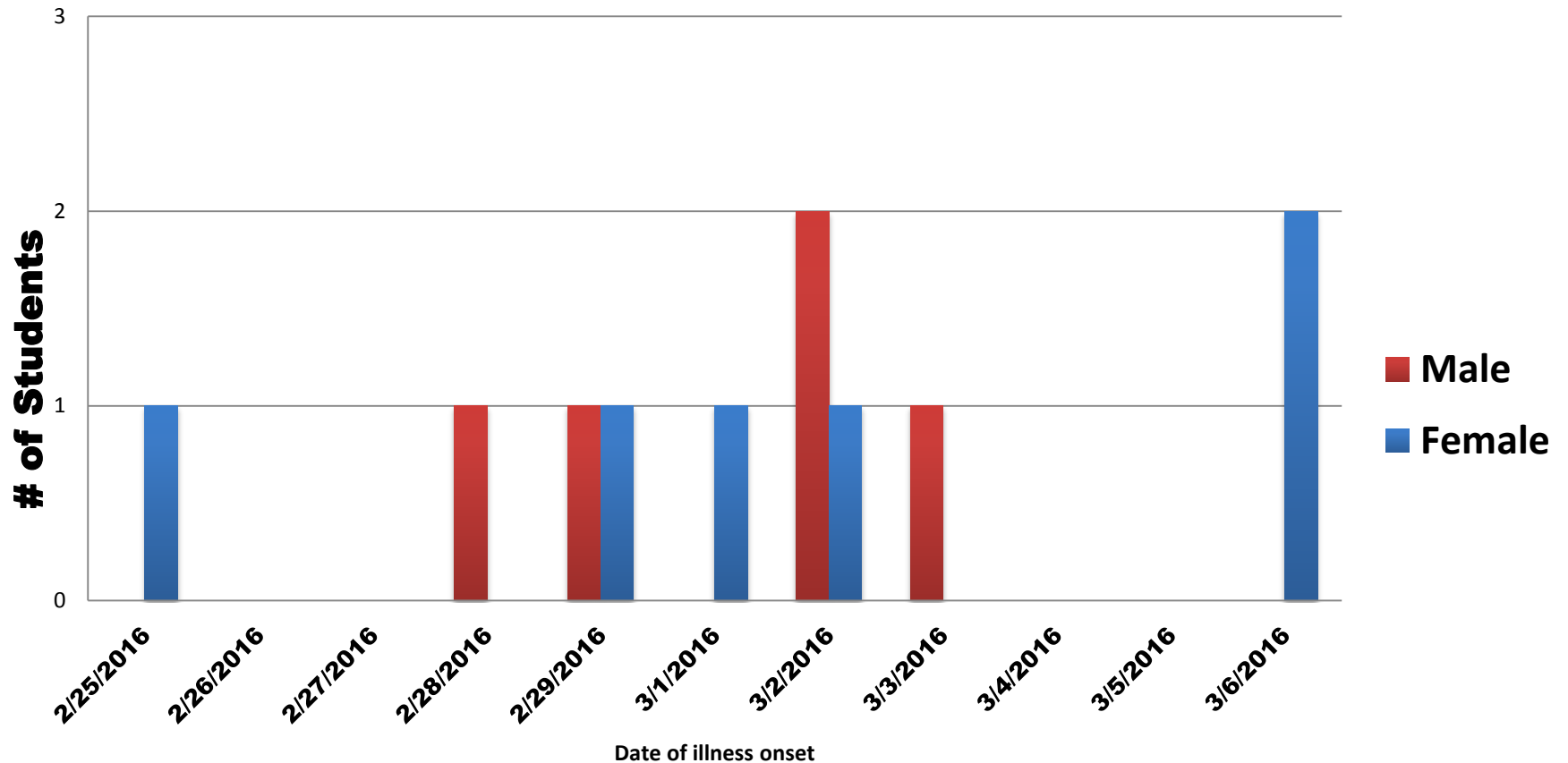
# Most common reported symptoms

- **Cough:** 73%
- **Fever:** 100%
- Sore Throat: 18%
- Vomiting: 18%
- Chills: 27%
- Other symptoms reported: Abdominal pain, Otitis media, myalgia, and nausea



# Epi Curve

## Small Influeza Outbreak at Elementary School



# Prevention Message

- Vaccinate against Influenza
- Hand, & personal hygiene
- Avoid exposure to infected persons
- Cough and Sneeze etiquette
- Increase cleaning in class rooms and common areas in school
- Influenza Information for schools from CDC.gov website.



# Issues

- Delays in obtaining medical records
- One upset Parent
- One Provider did not test on 2 cases who were siblings; clinical diagnosis

# Lessons Learned

- 1) More education and/or awareness to providers about collecting of patient information.
- 2) Be more organized!
- 3) Having documents ready in advance to hand out to Facilities.
  - A. Creating a generic form to send to the nurse to fill out.

# Any Questions?

