

Surveillance

[En Español](#)

 Influenza
(Flu)

ICD-9 487; ICD-10 J10,11

 Related Topics: [Protecting Yourself During the Cold and Flu Season](#), [Avian Flu](#), [Vaccine Preventable Diseases and SARS](#)

2008 - 2009 Texas Influenza Surveillance Information

Influenza Surveillance Report for MMWR Week 10

The influenza (flu) activity level for Texas for the week ending March 14, 2009 was "regional." During week 10, 172 (16.9%) specimens tested by NREVSS laboratories in Texas were positive for influenza. The percentage of visits for influenza-like illness as reported by ILINet providers in Texas was below the regional baseline.

Reports from Health Service Regions

Reports were received from all Health Service Regions (HSRs) for week 10. HSR 9/10 reported the same level of flu activity compared to week 9. All other HSRs reported a decreased level of flu activity compared to week 9. For a map of Health Service Regions, please visit the following website:

<http://www.dshs.state.tx.us/regions/state.shtm>

Laboratory Results

During week 10, ten hospital laboratories and public health agencies across Texas reported conducting a total of 1,019 influenza tests (antigen, culture, and PCR) to the National Respiratory and Enteric Virus Surveillance System (NREVSS) sponsored by the Centers for Disease Control and Prevention (CDC). Of the 890 antigen detection tests that were performed, 55 were positive for influenza A/not subtyped and 95 were positive for influenza B. The positive results were reported from Bell, Bexar, Collin, Dallas, Harris, Lubbock, and Tarrant counties. Five PCR tests positive for influenza A/H1, one PCR test positive for influenza A/H3, three PCR tests positive for influenza A/not subtyped, and seventeen PCR tests positive for influenza B were reported for Bell, Harris, and Tarrant counties. [There may be some overlap in the PCR and culture positive results described in this report (i.e., some of the PCR results may be from some of the same patients as the culture results).] A total of 79 reports of culture-confirmed influenza were received from public health laboratories, Scott & White Memorial Hospital in Temple, Texas Children's Hospital in Houston, the United States Air Force School of Aerospace Medicine (USAFSAM), NREVSS, and other sources for the following counties:

Influenza A/H1	Influenza A/H3	Influenza A/not subtyped	Influenza B
Wichita County	Bexar County El Paso County	Bell County (3) Bexar County Dallas County (4) Harris County (9) McLennan County (5) Wichita County (3)	Bell County Bexar County (3) Dallas County (18) Harris County (25) McLennan County (2) Travis County Wichita County

Additional positive results from point-of-care rapid flu tests were reported by providers throughout the state (see Texas map below).

Antigenic Characterization

CDC has reported antigenic characterization results from 36 influenza isolates [17 influenza A/H1, 1 influenza A/H3, and 18 influenza B viruses] received from the DSHS Laboratory since the beginning of the 2008–09 flu season.

Influenza A/H1 [17]

- All 17 viruses were characterized as A/Brisbane/59/2007, the influenza A/H1 component of the 2008–09 influenza vaccine for the Northern Hemisphere.

Influenza A/H3 [1]

- One virus was characterized as A/Brisbane/10/2007, the influenza A/H3 component of the 2008-09 influenza vaccine for the Northern Hemisphere.

Influenza B (B/Victoria/02/87 and B/Yamagata/16/88 lineages) [18]

Victoria lineage [12]

- Two (17%) of the twelve viruses were characterized as B/Ohio/01/2005-like viruses.
- Ten (83%) of the twelve viruses showed somewhat reduced titers with antisera produced against B/Malaysia/2506/2004 and B/Ohio/01/2005.

Yamagata lineage [6]

- Six viruses were characterized as B/Florida/4/2006, the influenza B component for the 2008-09 influenza vaccine for the Northern Hemisphere.

Antiviral Resistance

Since September 28, 2008, 15 influenza A/H1 isolates, 1 influenza A/H3 isolate, and 17 influenza B isolates from the DSHS laboratory have been tested by CDC for antiviral resistance.

	Isolates Tested (n)	Resistant Viruses, Number (%)		Isolates Tested (n)	Resistant Viruses, Number (%)
		Oseltamivir	Zanamivir		Adamantanes
Influenza A/H1	15	14 (93%)	0 (0)	15	0 (0)
Influenza A/H3	1	0 (0)	0 (0)	1	1 (100%)
Influenza B	17	0 (0)	0 (0)	N/A*	N/A*

*Adamantanes are not effective against influenza B viruses.

CDC has issued interim recommendations for use of antiviral medications in the 2008-09 influenza season. Those recommendations are available at: <http://www.cdc.gov/flu/professionals/antivirals/index.htm>.

Influenza–Associated Pediatric Mortality

No influenza-associated pediatric fatalities were reported during week 10. Texas has reported eight influenza-associated pediatric fatalities during the 2008-09 influenza season.

School Closures and Institutional Outbreaks

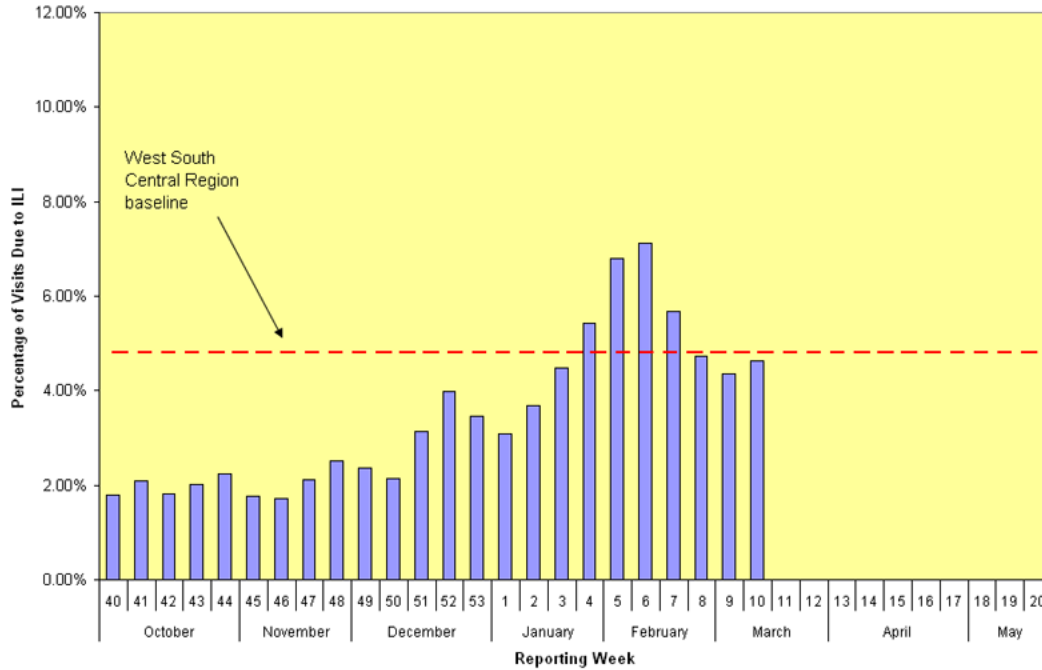
No school closures or institutional outbreaks were reported in week 10.

U.S. Outpatient Influenza-like Illness Surveillance Network

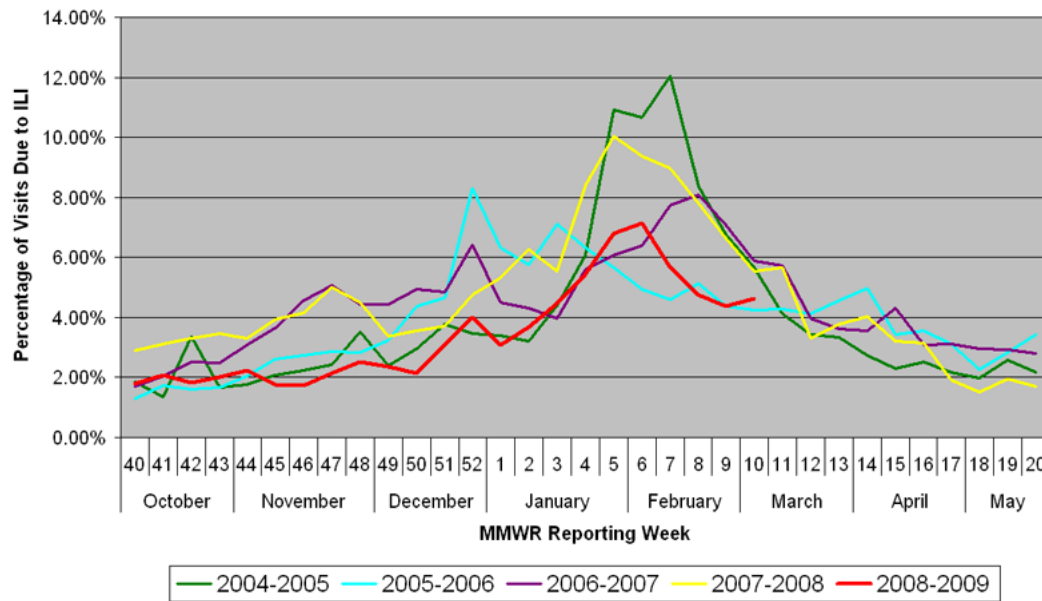
Fifty-five providers in Texas reported data to the U.S. Outpatient Influenza-like Illness Surveillance Network (ILINet) (formerly known as the U.S. Influenza Sentinel Provider Surveillance System) on patients with influenza-like illness (ILI) and total patients seen for any reason during week 10. Thirty-four (62%) of these providers saw at least one patient with ILI. Of all patient visits during this week, 4.63% were due to ILI. The ILI baseline for the West South Central Region (Arkansas, Louisiana, Oklahoma, and Texas) of the United States is 4.8% for the 2008-2009 season. The baseline is the mean percentage of patient visits for ILI during non-influenza weeks for the previous three seasons plus two standard deviations.

Percentage of Visits for Influenza–Like Illness Reported by the US Outpatient Influenza–Like Illness Surveillance Network (ILINet) in Texas as of 3/20/2009 10:27:33 AM								
Week	# Reporting	Age 0-4	Age 5-24	Age 25-64	Age over 64	Total ILI	Total Patients	% ILI
2008-40	78	84	133	127	22	366	20333	1.80
2008-41	78	114	163	124	19	420	20105	2.09
2008-42	79	107	156	90	7	360	19746	1.82
2008-43	79	120	152	106	20	398	19740	2.02
2008-44	80	136	199	103	26	464	20737	2.24
2008-45	78	110	111	122	27	370	20835	1.78
2008-46	73	110	106	103	23	342	19771	1.73
2008-47	75	137	143	122	19	421	19806	2.13
2008-48	79	131	132	125	37	425	16905	2.51
2008-49	77	143	159	153	24	479	20343	2.35
2008-50	75	133	146	108	28	415	19330	2.15
2008-51	69	172	177	175	24	548	17531	3.13
2008-52	76	194	153	154	34	535	13431	3.98
2008-53	77	176	141	165	46	528	15222	3.47
2009-01	78	162	182	188	38	570	18518	3.08
2009-02	77	178	287	235	41	741	20094	3.69
2009-03	78	174	468	341	43	1026	22951	4.47
2009-04	78	260	679	332	47	1318	24244	5.44
2009-05	73	282	883	465	40	1670	24590	6.79
2009-06	78	301	964	391	59	1715	24058	7.13
2009-07	78	320	814	316	57	1507	26597	5.67
2009-08	70	221	549	283	57	1110	23440	4.74
2009-09	70	188	404	241	71	904	20706	4.37
2009-10	55	204	295	202	73	774	16714	4.63

**Percentage of Visits Due to Influenza-Like Illness (ILI),
Texas Providers in the U.S. Outpatient Influenza-like Illness Surveillance Network,
2008–2009**

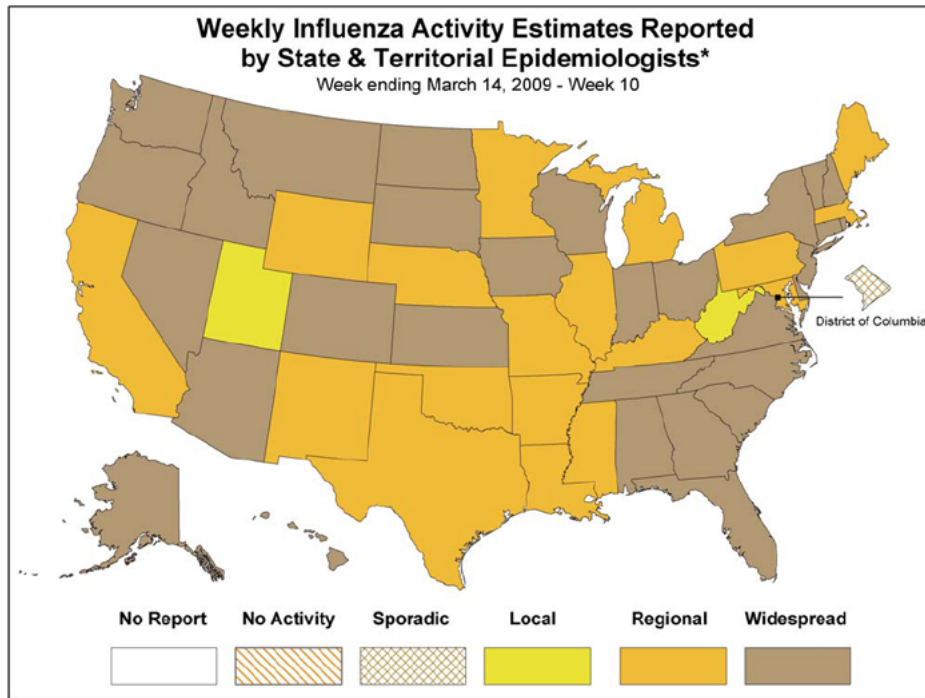


**Influenza-Like Illness (ILI) Data
Texas Providers in the U.S. Outpatient Influenza-like Illness Surveillance Network
Flu Seasons 2004–2009**



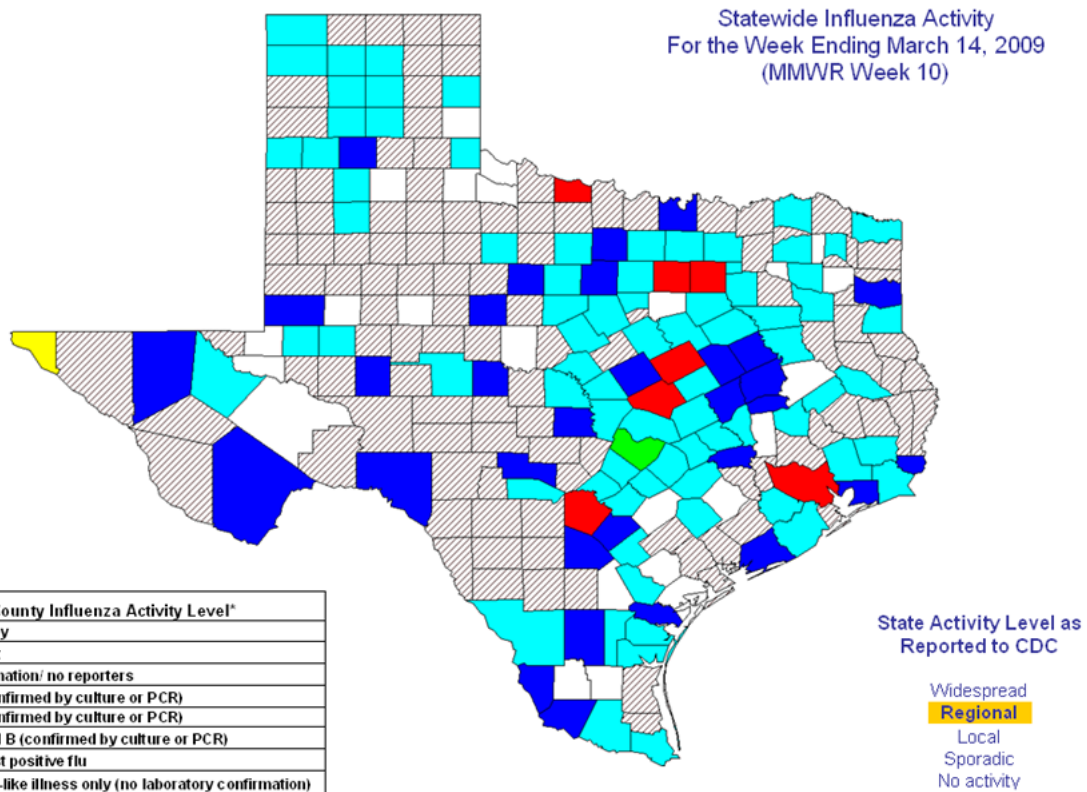
National Influenza Activity Map

The map showing influenza activity in the United States for MMWR week 10 is displayed below. The current U.S. flu weekly report may be found at: [here](#).



*This map indicates geographic spread and does not measure the severity of influenza activity.

For more information on flu surveillance activities in the State of Texas, please visit our main surveillance page.



*Influenza activity level corresponds to current MMWR week only and does not reflect previous weeks' activity.

Last Updated: Friday, March 20, 2009

Texas Department of State Health Services - Infectious Disease Control Unit
1100 West 49th Street, Suite T801, Mail Code: 1960 PO BOX 149347 - Austin, TX 78714-9347
(512) 458-7676 - Fax: (512) 458-7616 - E-Mail

Topics A-Z / Site Map