

## Texas Influenza Surveillance Report 2016–2017 Season/2016 MMWR Week 49

(Dec. 4, 2016 – Dec. 10, 2016)  
Report produced on 12/16/2016

### Summary

Influenza activity increased slightly, but remained low in Texas. Hospital and public health laboratories reported a small percentage of specimens testing positive for influenza. Compared to the previous week, the percentage of patient visits due to influenza-like illness (ILI) slightly increased. No influenza-associated pediatric deaths were reported. No ILI or influenza outbreaks were reported. In addition to flu, other respiratory viruses—especially rhinovirus/enterovirus and RSV—were detected in Texas during week 49.

Table 1: Summary of Texas Influenza (Flu) and Influenza-like Illness (ILI) Activity for the Current Week

Texas Surveillance Component	Change from Previous Week	Current Week	Previous Week <sup>†</sup>	Page of Report
Statewide influenza activity level reported to CDC (geographic spread of influenza)	No change	Local	Local	--
Statewide ILINet Activity Indicator assigned by CDC (intensity of influenza-like illness)	No change	Minimal	Minimal	--
Percentage of specimens positive for influenza by hospital laboratories	▲ 2.23%	3.62%	1.39% <sup>†</sup>	1
Percentage of specimens positive for influenza by public health laboratories	▲ 10.62%	21.43%	10.81% <sup>†</sup>	2
Percentage of visits due to ILI (ILINet)	▲ 0.57%	4.14%	3.57% <sup>†</sup>	4
Number of regions reporting increased flu/ILI activity	▲ 1	3	2	6
Number of regions reporting decreased flu/ILI activity	No change	0	0	6
Number of variant/novel influenza infections	No change	0	0	6
Number of ILI/influenza outbreaks	No change	0	0	6
Number of pediatric influenza deaths	No New Cases Reported	0	0	7

<sup>†</sup>Data displayed have been updated since last week's flu report with any new reports received.

### Laboratory Results

#### Influenza

Hospital laboratories across Texas voluntarily report influenza tests (antigen, culture, and PCR) to the National Respiratory and Enteric Virus Surveillance System (NREVSS). Providers throughout Texas also submit specimens for influenza testing (PCR) to Texas public health laboratories, including the Texas Department of State Health Services (DSHS) state laboratory in Austin and the nine Texas Laboratory Response Network (LRN) laboratories. The results reported by Texas NREVSS participants and public health laboratories for the current week are summarized in the two tables below. Additional influenza test results (rapid tests, culture, PCR) and ILI activity were reported from providers and public health departments throughout the state (see county map at the end of this report).

Table 2: Influenza Testing Performed by Texas Hospital Laboratories for the Current Week

	Week 49	Season to Date
Number of labs reporting flu tests	14	
Number of specimens tested	1604	15945
Number of positive specimens (%) <sup>†</sup>	58 (3.62%)	307 (1.93%)
Percentage of total tests that were antigen detection tests	38.53%	
<b>Positive specimens by type/subtype [n (%)]</b>		
<b>Influenza A</b>	<b>38 (65.52%)</b>	<b>153 (49.84%)</b>
Subtyping performed	9 (23.68%)	29 (18.95%)
A (H1N1)	1 (11.11%)	2 (6.90%)
A (H3N2)	8 (88.89%)	27 (93.10%)
Subtyping not performed	29 (76.32%)	124 (81.05%)
<b>Influenza B</b>	<b>20 (34.48%)</b>	<b>154 (50.16%)</b>

<sup>†</sup>Laboratory data in 2016-2017 season reports may not be comparable to reports from previous seasons because the data only includes hospital laboratories data for the current season.

Figure 1: Number and Percentage of Tests (Antigen, Culture, PCR) Positive for Influenza by Type and Subtype Reported by Texas Hospital Laboratories, 2016–2017 Season

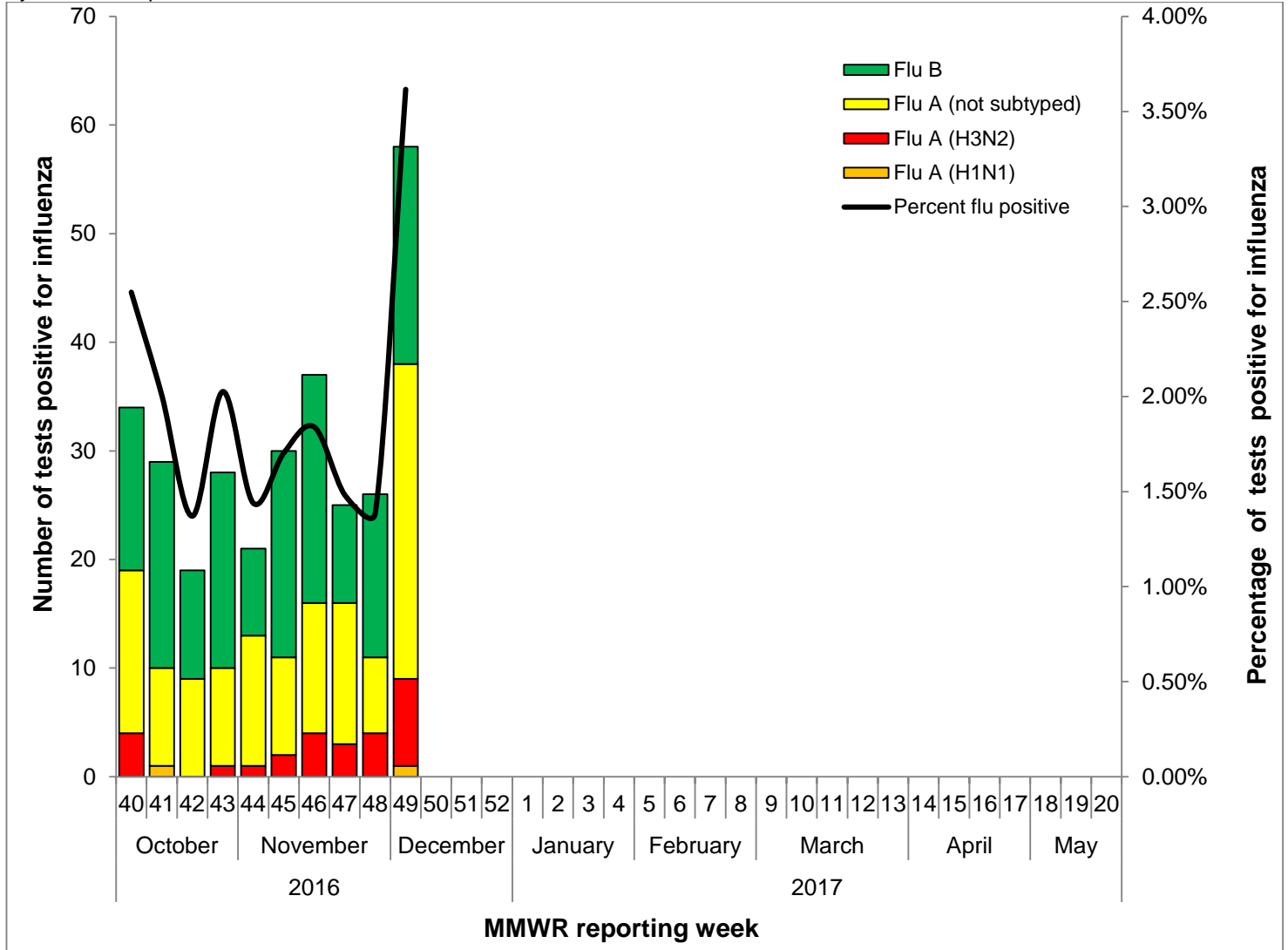
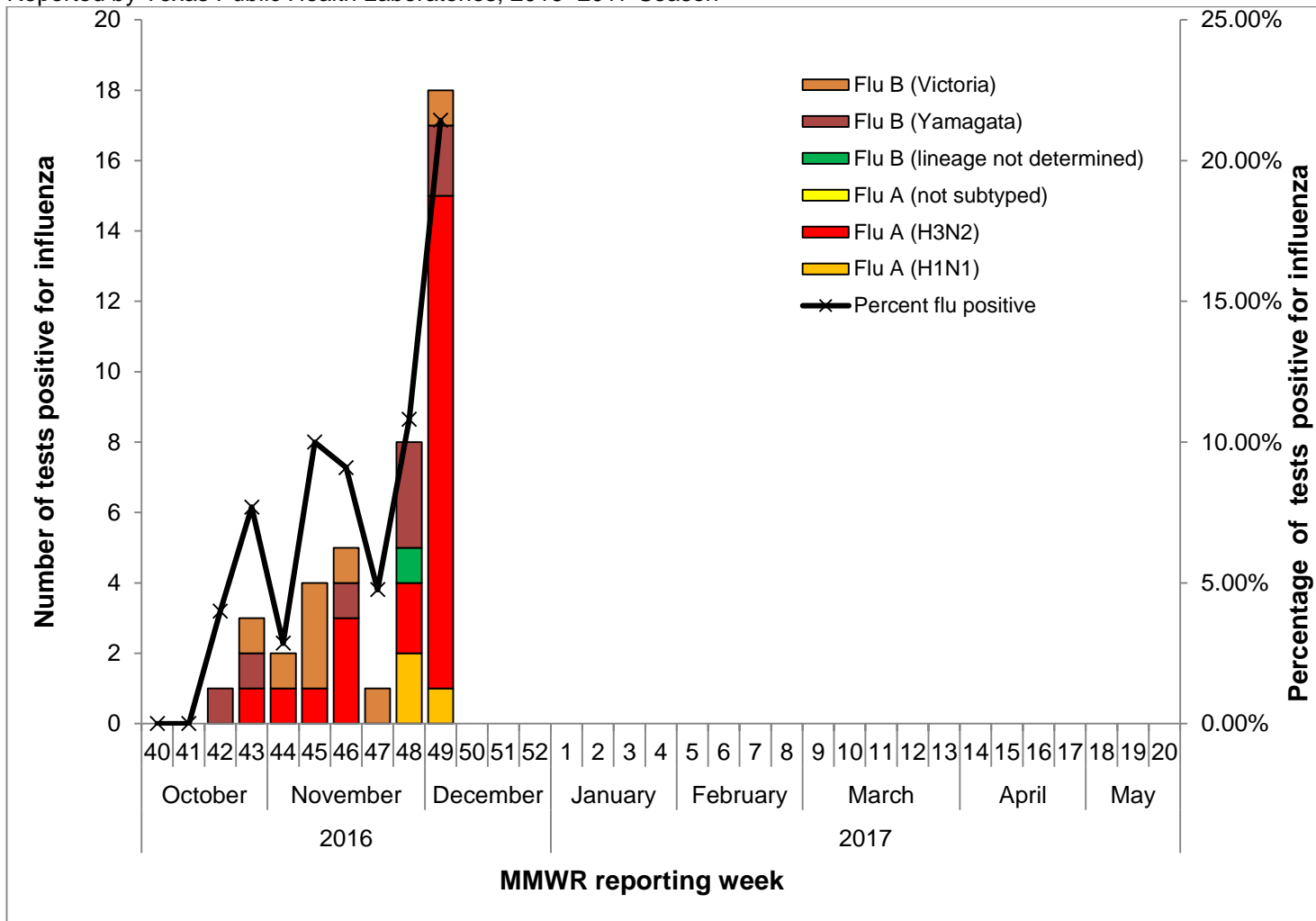


Table 3: Influenza Testing Performed by Texas Public Health Laboratories for the Current Week

	Week 49	Season to Date
Number of labs reporting flu tests	8	
Number of specimens tested	84	452
Number of positive specimens (%) <sup>†</sup>	18 (21.43%)	42 (9.29%)
Positive specimens by type/subtype/lineage [n (%)]		
<b>Influenza A</b>	<b>15 (83.33%)</b>	<b>25 (59.42%)</b>
Subtyping performed	15 (100.00%)	25 (100.00%)
A (H1N1)	1 (6.67%)	3 (12.00%)
A (H3N2)	14 (93.33%)	22 (88.00%)
Subtyping not performed	0 (0.00%)	0 (0.00%)
<b>Influenza B</b>	<b>3 (16.67%)</b>	<b>17 (40.48%)</b>
Lineage testing performed	3 (100.00%)	16 (94.12%)
B/Victoria	1 (33.33%)	8 (50.00%)
B/Yamagata	2 (66.67%)	8 (50.00%)
Lineage testing not performed	0 (0.00%)	1 (5.88%)

<sup>†</sup>Laboratory data in 2016-2017 season reports may not be comparable to reports from previous seasons because the data only includes DSHS and LRN laboratory data for the current season.

Figure 2: Number and Percentage of Tests (Culture, PCR) Positive for Influenza by Type, Subtype, and Lineage Reported by Texas Public Health Laboratories, 2016–2017 Season



*Other Respiratory Viruses*

The NREVSS system collects information on a variety of respiratory viruses in addition to influenza including parainfluenza virus, respiratory syncytial virus (RSV), rhinovirus, human metapneumovirus (HMPV), seasonal coronavirus, and respiratory adenovirus. The results for the current week are summarized below.

Table 4: Non-Influenza Respiratory Virus Testing Performed by Texas NREVSS Laboratories for the Current Week

Virus	Number of Laboratories Testing	Tests Performed	Positive Tests	Percentage of Tests Positive
Adenovirus (respiratory)	9	656	18	2.74%
HMPV	10	691	24	3.47%
Parainfluenza virus	10	869	55	6.33%
Rhinovirus	9	597	145	24.29%
RSV <sup>†^</sup>	15	1166	236	20.24%
Seasonal coronavirus (does not include MERS-CoV)	6	557	24	4.31%

<sup>†</sup>RSV tests displayed in the table are a combination of antigen detection, PCR, and culture tests. Some non-NREVSS reporters also contribute to the RSV data.

<sup>^</sup>Numbers and percentage may differ from the weekly RSV report. The weekly RSV report may be accessed at <https://www.dshs.state.tx.us/RSV/disease/rsv-Data.aspx>.

*Antigenic Characterization*

No antigenic characterization data for Texas specimens are available at this time. The DSHS Laboratory sends a representative sample of influenza viruses to the CDC throughout the flu season.

*Antiviral Resistance*

No antiviral resistance testing data for Texas specimens are available at this time.

**U.S. Outpatient Influenza-like Illness Surveillance Network (ILINet)**

Table 5: Texas ILINet Reporting and Patient Visit Summary for the Current Week

Week 49	
Number of providers reporting <sup>†</sup>	104
Number of providers reporting patient visits	104
Number (%) of providers with at least one ILI case	85 (81.73%)
Percentage of all visits due to ILI	4.14%
Texas ILINet baseline <sup>‡</sup> , 2016–2017	6.64%

<sup>†</sup>Reporting providers include both ILINet and RVSP providers.

<sup>‡</sup>The baseline is the mean percentage of patient visits for ILI during non-influenza weeks for the previous three seasons plus two standard deviations. A "non-influenza week" is defined as a week that accounted for less than 2% of the season's total number of specimens that tested positive for influenza

Table 6: Percentage of Visits for Influenza-like Illness Reported by Texas ILINet Providers (as of 12/15/16 1:31 PM)

Week	Providers Reporting	Number of ILI Cases by Age Group (Years)					Total ILI (all ages)	Total Patients	% ILI
		0-4	5-24	25-49	50-64	65+			
201640	119	166	313	142	106	145	872	32018	2.72%
201641	120	140	279	151	87	137	794	30668	2.59%
201642	116	132	246	126	118	109	731	30165	2.42%
201643	116	138	295	149	139	125	846	30041	2.82%
201644	107	115	274	102	36	33	560	27441	2.04%
201645	116	152	267	167	104	133	823	29815	2.76%
201646	114	186	318	142	116	147	909	30275	3.00%
201647	111	146	200	139	115	116	716	21475	3.33%
201648	107	193	240	175	165	187	960	26907	3.57%
201649	104	194	290	204	176	187	1051	25358	4.14%

Figure 3: Percentage of Visits Due to Influenza-like Illness Reported by Texas ILINet Participants, 2016–2017 Season

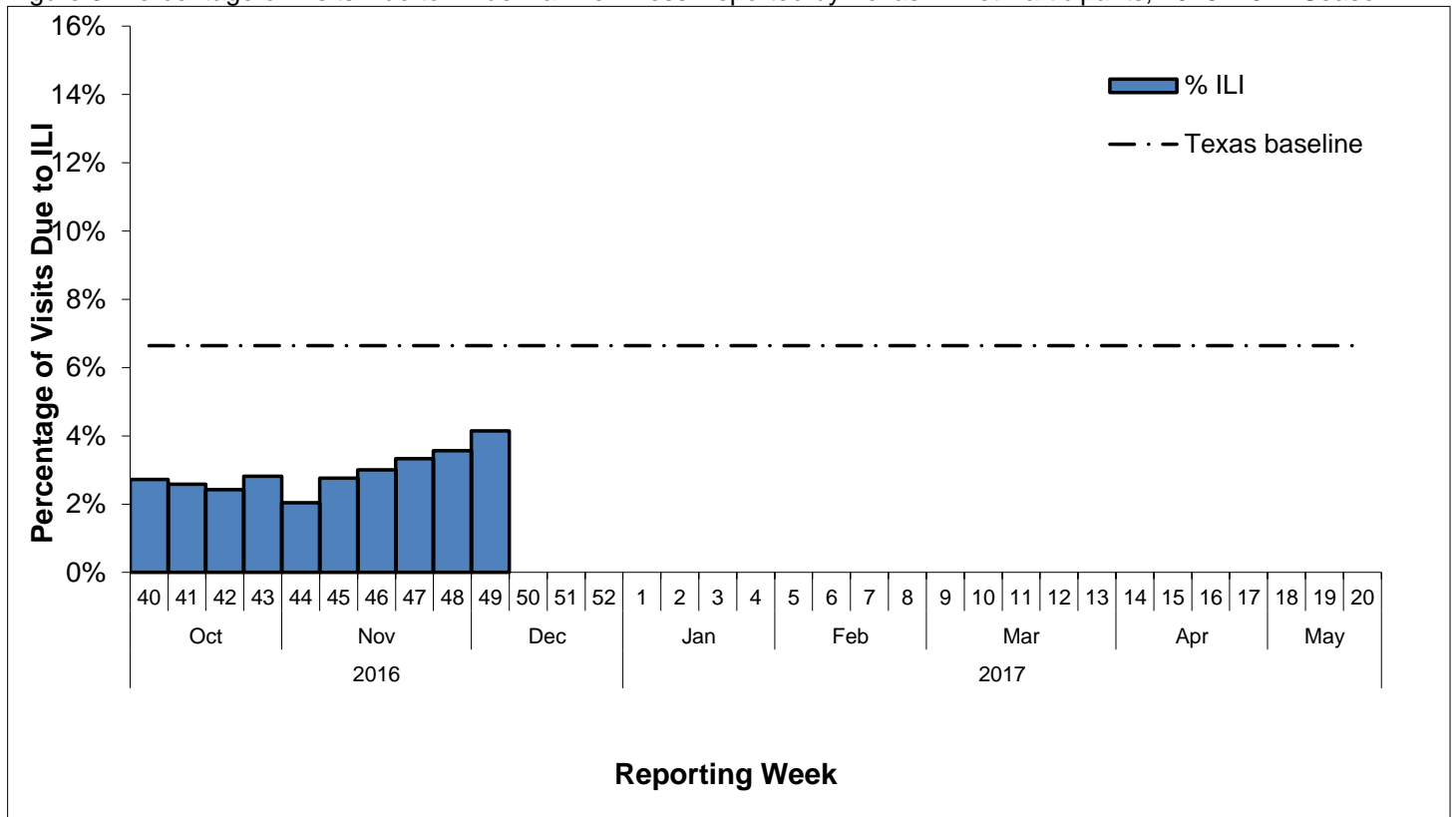
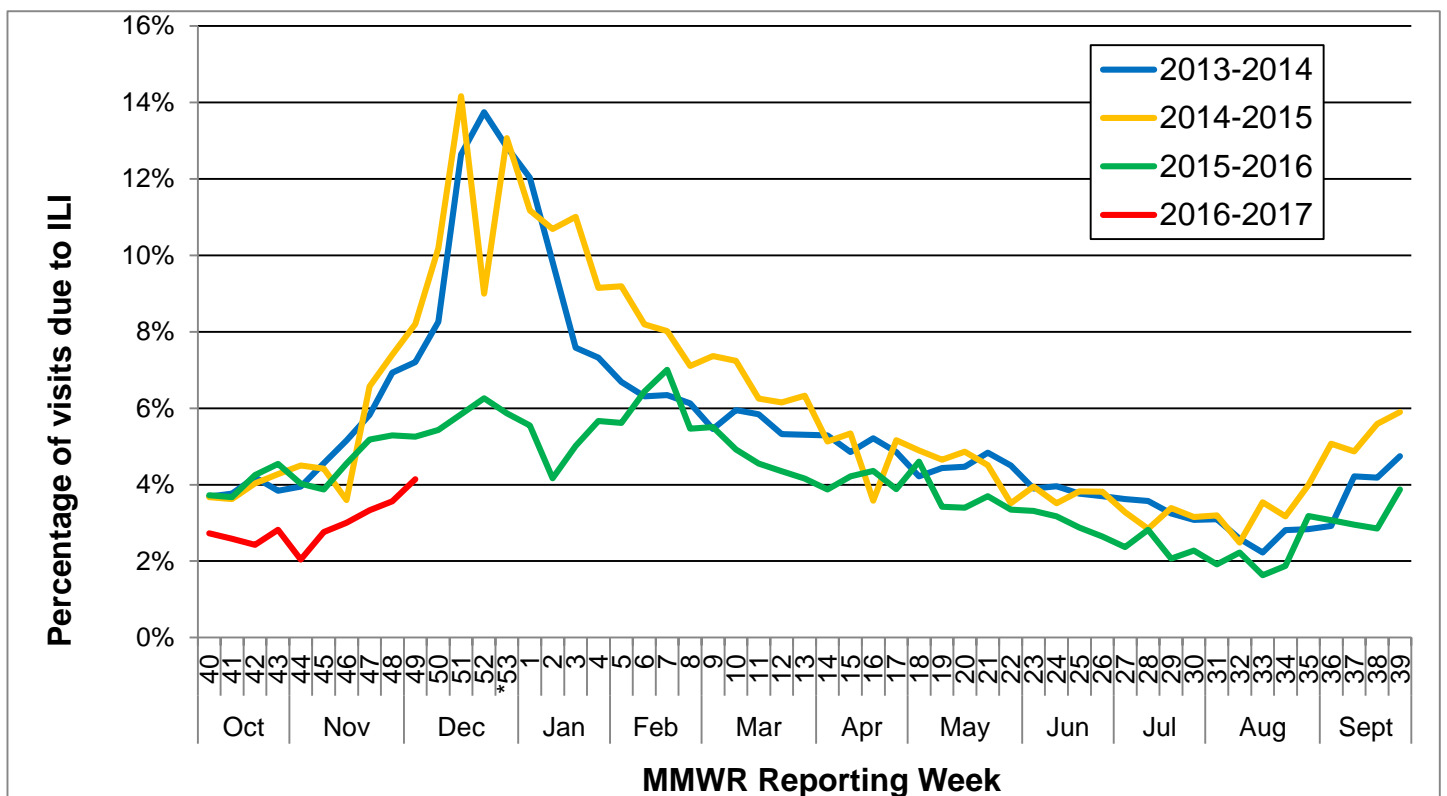


Figure 4: Percentage of Visits Due to Influenza-like Illness Reported by Texas ILINet Participants, 2013–2017 Seasons\*



\*There was a week 53 in the 2014-2015 influenza season, but there is not a week 53 in the 2016-2017 influenza season or the other previous seasons; therefore the week 53 data point for those seasons is an average of week 52 and 1.

## Reports from Health Service Regions

Reports were received from all Health Service Regions (HSRs) during week 49.

Table 7: Influenza Activity Compared to Week 48 by Health Service Region (HSR)

Influenza Activity Comparison	
Increased	1, 7, and 11
Same	2/3, 4/5N, 6/5S, 8, and 9/10
Decreased	
Unsure	

## Variant Influenza Viruses

No variant or novel influenza viruses have been detected in Texas in 2016.

## Institutional Outbreaks and School Closures

No new ILI or influenza outbreaks were reported during week 49.

No school closures were reported during week 49.

## TX P&I Mortality Surveillance Data

Pneumonia and influenza (P&I) death data are obtained from death certificates of Texas residents whose underlying or contributing cause(s) of death is reported as pneumonia or influenza. P&I deaths are identified based on ICD-10 multiple cause of death codes. In particular, P&I deaths are based on ICD-10 pneumonia and influenza mortality codes.

Six hundred eighty-two P&I deaths have been reported in Texas during the 2016-2017 influenza season.

Table 8: Texas P&I Deaths Occurring Oct. 02, 2016-Dec. 14, 2016\* by Age

Age Category (years)	Number of P&I Deaths <sup>+</sup>	Mortality Rate (per 100,000)
0 - 4	<10	0.24
5 - 17	<10	0.02
18 - 49	32	0.25
50 - 64	106	2.10
65 +	538	15.32
Overall	682	2.37

\*NOTE: Data are provisional and subject to change, errors, and duplicates

<sup>+</sup> If the cell count is less than 10, the number of P&I deaths is suppressed and <10 is written in the cell.

Table 9: Texas P&I Deaths Occurring Oct. 02, 2016-Dec. 14, 2016\* by Health Service Region (HSR)

HSR	Number of P&I Deaths <sup>+</sup>	Mortality Rate (per 100,000)
1	32	3.52
2/3	197	2.37
4/5N	52	3.24
6/5S	155	2.06
7	66	1.89
8	64	2.15
9/10	38	2.45
11	78	3.23
Overall	682	2.37

\*NOTE: Data are provisional and subject to change, errors, and duplicates

<sup>+</sup> If the cell count is less than 10, the number of P&I deaths is suppressed and <10 is written in the cell.

## Influenza-Associated Pediatric Mortality

No influenza-associated pediatric deaths were reported during week 49.

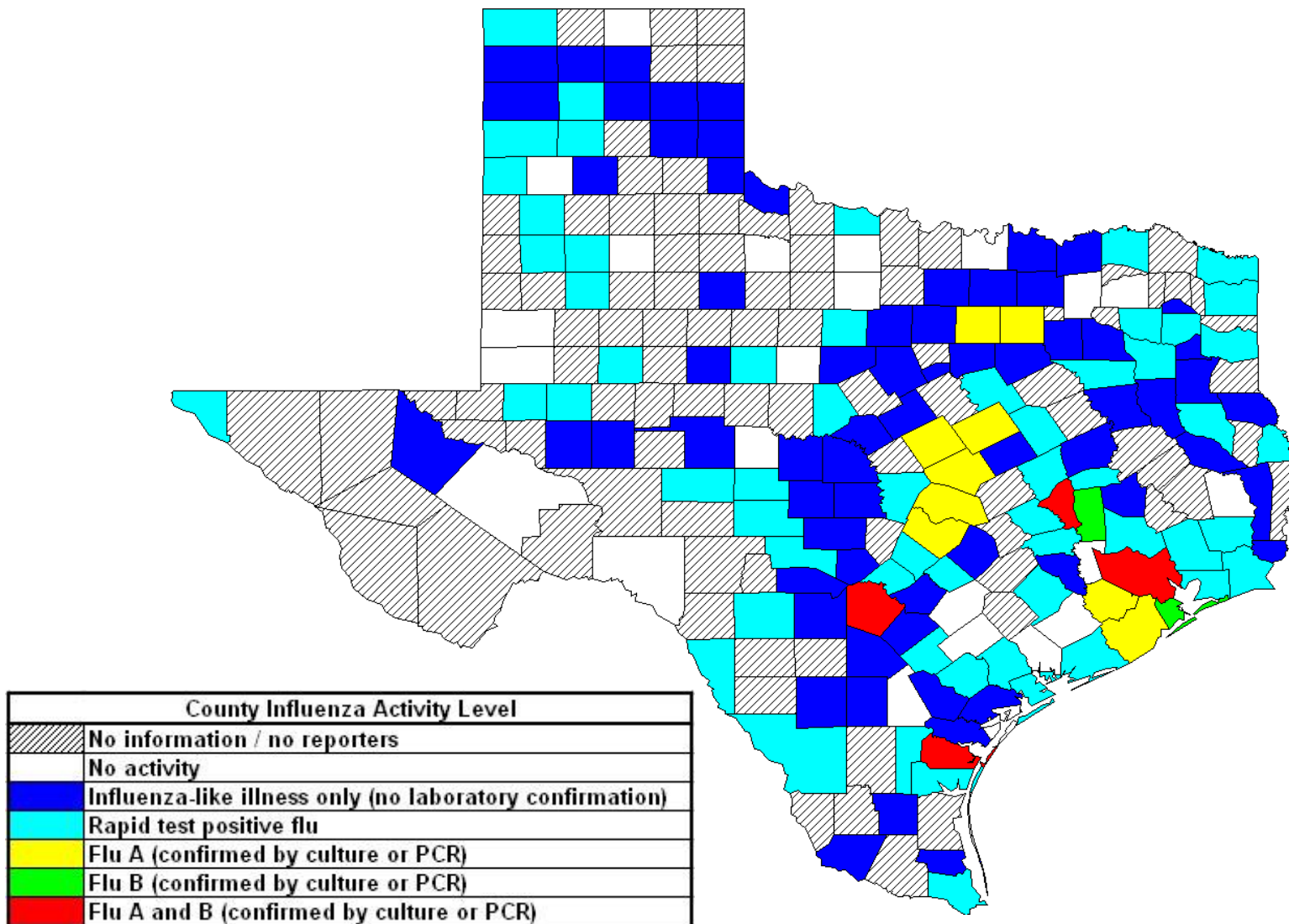
No influenza-associated pediatric deaths have been reported in Texas during the 2016-2017 influenza season. Cases of influenza-associated pediatric mortality (children <18 years of age) are reportable year-round and by law in Texas.

Table 10: Influenza-Associated Pediatric Deaths Reported in Texas during the 2016–2017 Season

Month of Pediatric Death	Influenza A (H1N1)	Influenza A (H3N2)	Influenza A (Not Subtyped)	Influenza B	Influenza, Not Typed / Not Differentiated	Influenza virus co-infection: A (not subtyped) and B	Total, All Influenza Types / Subtypes
<b>2016</b>							
October	0	0	0	0	0	0	0
November	0	0	0	0	0	0	0
December	0	0	0	0	0	0	0
<b>Total</b>	<b>0</b>	<b>0</b>	<b>0</b>	<b>0</b>	<b>0</b>	<b>0</b>	<b>0</b>

## Statewide Influenza Activity Map

Figure 5: Texas Map Displaying the Highest Level of Influenza or ILI Activity Reported by County for the Week Ending Dec. 10, 2016 (MMWR Week 49)



Please note: The majority of influenza cases are not reportable by law in Texas. This map contains data from sentinel sites and only displays influenza and ILI cases that were reported to public health. Positive laboratory results are reported according to specimen collection date, or date received in the laboratory if the former is unknown.



# Texas Influenza Surveillance Components and Measures

Activity codes (see <http://www.cdc.gov/flu/weekly/overview.htm>)

## Statewide influenza activity level

A code reported weekly by states and territories to CDC indicating the geographic spread of influenza in the state. Levels are no activity, sporadic, local, regional, and widespread.

## ILINet Activity Indicator

A statewide level of influenza-like illness intensity (on a scale of 1-10, with 1 being the lowest level) assigned to each state weekly by CDC based on data reported through ILINet.

## Morbidity

### Novel/variant influenza

Thorough investigations are performed on all cases of novel/variant influenza. *This condition is reportable by law in Texas.*

### Texas ILINet

Providers voluntarily report weekly to CDC's ILINet system on the number of outpatient visits for ILI and total outpatient visits. Providers may submit up to 5 specimens per month for influenza testing. See <http://www.dshs.state.tx.us/idcu/disease/influenza/surveillance/ILINet/> for information on how to become an ILINet provider.

### ILI activity

Non-ILINet providers report ILI or influenza data weekly to local or regional health departments.

### Outbreaks

Healthcare, schools, childcare, and correctional facilities report ILI and influenza outbreaks to health departments in Texas. *This condition is reportable by law in Texas.*

## Mortality

### Pneumonia and Influenza (P&I) Mortality Surveillance

The DSHS Vital Statistics Unit collects death certificate information for all deaths on Texas residents from various partners such as funeral homes and local registrars around the state. The death certificates are then sent to the National Center for Health Statistics (NCHS) where the cause of death and underlying causes of death on the death certificates are coded with ICD-10 mortality codes. Once death certificates are coded, the information is sent back to DSHS Center for Health Statistics (CHS). CHS produces a Weekly Pneumonia and Influenza (P&I) Death Report and sends it to the State Influenza Surveillance Coordinator for inclusion in the Texas Weekly Flu Report. P&I deaths are identified based on ICD-10 multiple cause of death codes, and in particular, pneumonia and influenza mortality codes. Delays inherent in death reporting and coding practices may cause the number of reported P&I deaths to vary considerably each week.

### Influenza-associated pediatric deaths

Deaths that are associated with influenza in children < 18 years of age are reported to health departments in Texas. *This condition is reportable by law in Texas.* <http://www.dshs.state.tx.us/idcu/disease/IAPM/>

## Laboratory

### DSHS Austin laboratory

Providers voluntarily submit specimens to the DSHS Austin laboratory for influenza PCR testing throughout the season. Providers sign up for this program through their local health departments.

### Laboratory Response Network (LRN) laboratories

Providers voluntarily submit specimens to one of the 9 Texas LRNs for influenza PCR testing throughout the season. Providers sign up for this program through their local health departments.

### NREVSS

Laboratories voluntarily report influenza and other respiratory virus data weekly through the CDC's online NREVSS reporting system. **Laboratories sign up for this program by contacting DSHS.** <http://www.cdc.gov/surveillance/nrevss/>

## **Recommended Resources**

### *Texas Department of State Health Services*

DSHS influenza page: <http://www.texasflu.org/>

Influenza surveillance data and reports: <http://www.dshs.state.tx.us/idcu/disease/influenza/surveillance/>

Map of Texas Health Service Regions: <http://www.dshs.state.tx.us/regions/state.shtm>

### *Centers for Disease Control and Prevention*

National FluView weekly flu report: <http://www.cdc.gov/flu/weekly/>

Variant influenza viruses: <http://www.cdc.gov/flu/swineflu/variant.htm>

Avian influenza viruses: <http://www.cdc.gov/flu/avianflu/index.htm>

Swine influenza viruses: <http://www.cdc.gov/flu/swineflu/index.htm>

Infection Control in Healthcare Facilities: <http://www.cdc.gov/flu/professionals/infectioncontrol/>

Seasonal Flu Information for Schools and Childcare Providers: <http://www.cdc.gov/flu/school/index.htm>

### *World Health Organization*

Influenza page: <http://www.who.int/topics/influenza/en/>

Disease Outbreak News: <http://www.who.int/csr/don/en/>