

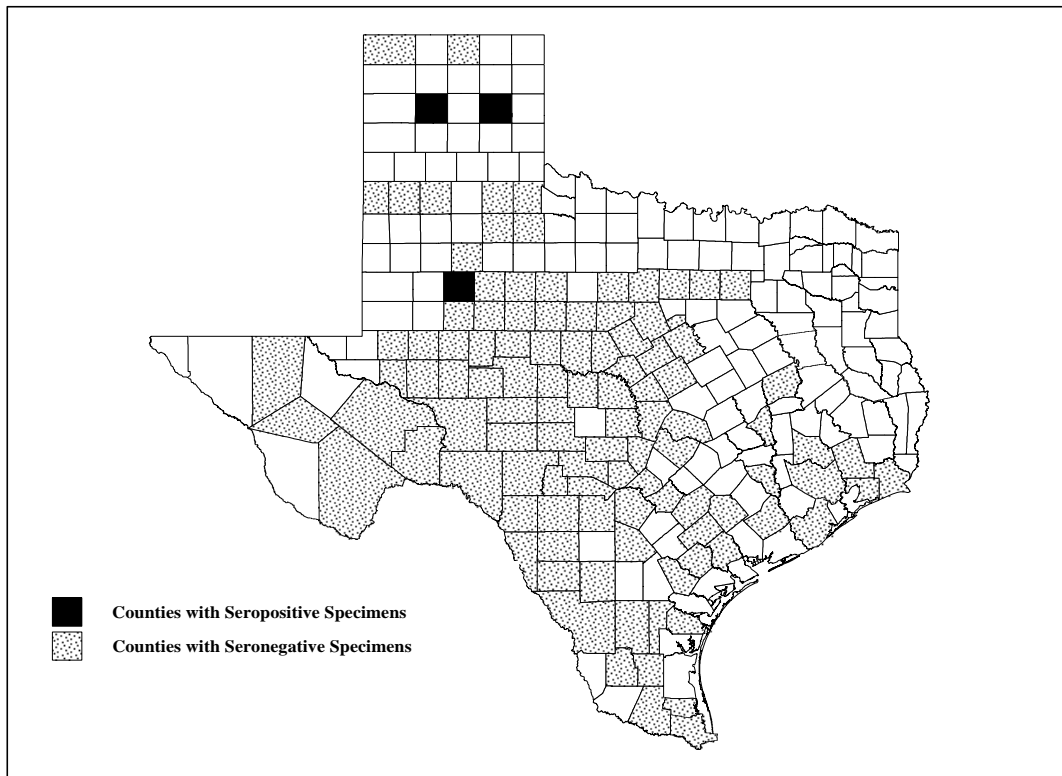
## 1998 PLAGUE SURVEILLANCE REPORT

During the calendar year of 1998, ♣the Texas Department of Health Laboratory, Microbiology Division, Serology Branch tested serum samples collected by Nobuto Strips from 2,757 animals from 109 counties for plague (*Yersinia pestis*) antibodies. Four ( 0.15% ) of the specimens tested seropositive ( titer  $\geq 1 : 32$  ) for plague.

### 1998 Plague Seropositive Species

County	Results	Coyote
Borden	1 : 32	1
Gray	1 : 32	1
Potter	1 : 256	2
Total		4

### Plague Surveillance in Texas, 1998



♣Serum samples are primarily collected from carnivores. Although most carnivores are resistant to plague, they seroconvert when exposed, thereby making them good indicators of local plague activity.

In addition to serosurveillance, two separate Black-tailed Prairie Dog ( *Cynomys ludovicianus* ) town die-offs were reported to Public Health Region 1 personnel, one in the Hockley County area and the other in the Terry County/Yoakum County area . Both occurred about six months apart, Hockley County in early spring and Terry County/Yoakum County in late summer or early fall.

1. The Hockley County incident : 356 live-trapped prairie dogs were shipped from Hockley Co. ( Texas Panhandle ) to a Colorado County ( Texas Coastal Plain ) animal facility. A few days after arrival, several prairie dogs began to die. By the end of the first week, a total of 281 (79%) animals had died. Plague was confirmed by FA ( fluorescent antibody ) testing of dead animal tissues by the Centers for Disease Control and Prevention, Plague Branch, Ft. Collins, Colorado.
2. The Terry County/Yoakum County incident : the Yoakum Co. county extension agent contacted the District Supervisor for the Texas Wildlife Damage Management Service, Canyon Office about the recent disappearance of a thriving colony of Black-tailed Prairie Dogs. The District Supervisor contacted PHR 1 personnel with this information and a site investigation was completed. This area was southwest of the Hockley Co. plague die-off that had occurred earlier in the year. On-site review revealed that this die-off had occurred several weeks prior to the report. No samples were collected from the site for testing.

1998 Plague Seronegative Specimens by county ( see table )

Plague Seropositives – 5 Year Overview ( see bar graph )

Distribution of Plague Based on Laboratory Testing ( see map )

\*Report provided by : Zoonosis Control Division, Plague Surveillance Branch;  
Guy M. Moore and Bradley N. Hicks, co-leaders

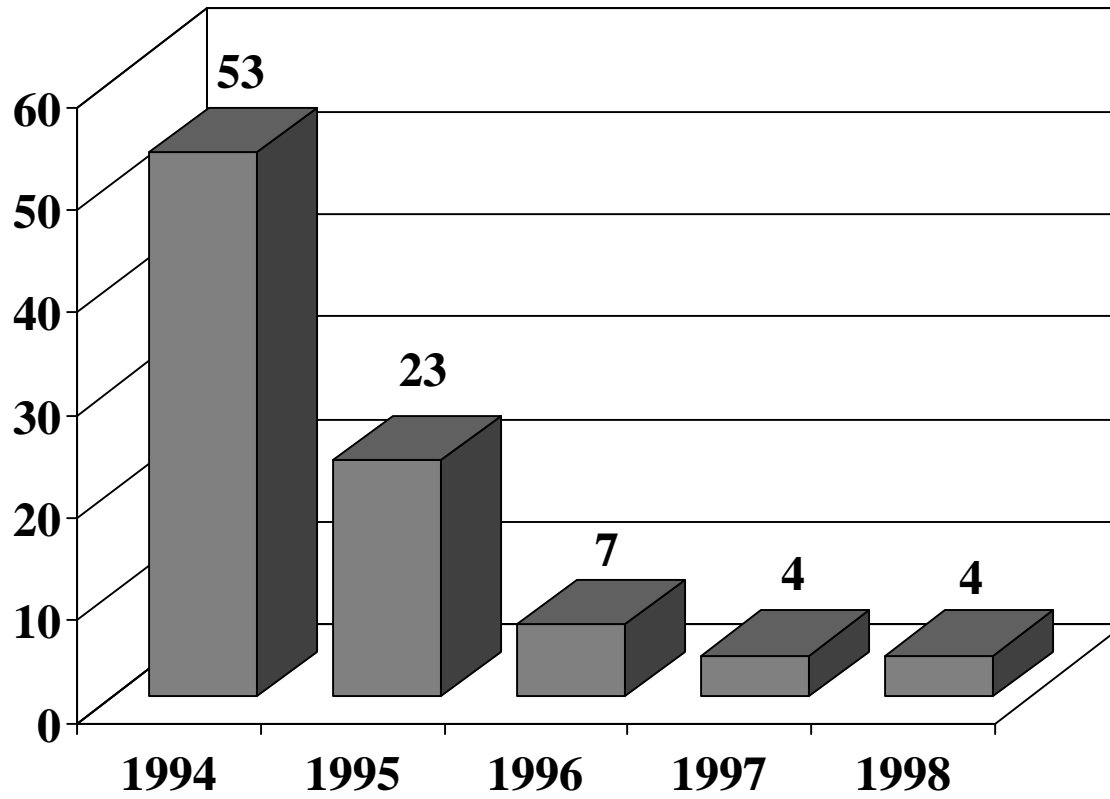


County	Aoudad	Badger	Beaver	Bobcat	Cat	Cottontail	Coyote	Dog	Fox, Gray	Fox, Red	Hog, Feral	Javelina	Mt.Lion	Opossum	Porcupine	Raccoon	Ringtail	Skunk	Total
Dallam																2			2
Dallas							7									130			137
De Witt							4												4
Dickens							3				3					1			7
Dimmit							1									2			3
Duval			1				3												4
Eastland			1				1		3							15			20
Ector					16														16
Edwards			12		1		4		24		123					46			210
Erath											4								4
Fisher							1												1
Garza							7												7
Gillespie							1		1							4			6
Glasscock			1	5			13		9	10								1	39
Goliad							6				1								7
Gonzales							1												1
Gray			1				25												26
Guadalupe							2												2
Hale		1					2												3
Hamilton				1															1
Hansford							1												1
Harris					14		1		1										16
Hidalgo		3			15	1	60	1	1					18		6			105
Howard							1												1
Irion							2		1										3
Jeff Davis					1				1										2
Jefferson					2		5												7
Jim Hogg							4				1								5
Jim Wells				2			16							2		6			26
Jones							3												3
Kendall			3						6							6	2		17



County	Aoudad	Badger	Beaver	Bobcat	Cat	Cottontail	Coyote	Dog	Fox, Gray	Fox, Red	Hog, Feral	Javelina	Mt.Lion	Opossum	Porcupine	Raccoon	Ringtail	Skunk	Total
Somervell			2				3												5
Stephens							92												92
Sterling	1	1	1	4			5		7	10						2			31
Sutton				2		3			7	1	20					5			38
Tarrant									1							5			6
Taylor				3			11		2							2			18
Terrell				4	4				3										11
Tom Green				1					16	3									20
Travis									1										1
Upton				3			1			3						1			8
Uvalde		1	1				26		8		3					9			48
Val Verde	2	3		76	4		9		57		6		1	2	3	74		2	239
Victoria							1		1							1			3
Webb		1		3			38				1	2				2			47
Wharton							1				7								8
Willacy							1												1
Williamson									2							2			4
Zavala							15												15
<b>Total</b>	<b>6</b>	<b>11</b>	<b>87</b>	<b>214</b>	<b>174</b>	<b>6</b>	<b>846</b>	<b>1</b>	<b>302</b>	<b>48</b>	<b>310</b>	<b>3</b>	<b>2</b>	<b>98</b>	<b>3</b>	<b>514</b>	<b>3</b>	<b>125</b>	<b>2753</b>

### Plague Seropositives – 5 Year Overview



# Distribution of Plague Based On Laboratory Testing

