

Texas Respiratory Virus Surveillance Report 2025-2026 Season 2025 MMWR Week 44

(October 26, 2025 – November 1, 2025)
Report produced on November 7, 2025

Table of Contents

Influenza Surveillance.....	2
Summary.....	2
Laboratory Results.....	2
U.S. Outpatient Influenza-like Illness Surveillance Network (ILINet)	4
Regional Activity Reports.....	7
Variant Flu and Respiratory Outbreaks.....	7
Pneumonia and Influenza (P&I) Mortality Surveillance Data	7
Influenza-Associated Pediatric Mortality	8
Statewide Influenza Activity Map	9
 RSV Surveillance.....	 10
Other Respiratory Viruses	12
 COVID-19 Surveillance.....	 13
Summary.....	13
<i>New and Total Cases</i>	13
Weekly Case Map	14
Laboratory Results	15
COVID-19 Mortality	16
COVID-19 Sequencing and Variant Surveillance.....	18
 Surveillance Components and Measures	 19
 Appendix.....	 22

Influenza Surveillance

Summary

Compared to the previous week, the percentage of specimens testing positive for influenza reported by hospital laboratories has decreased. The percentage of patient visits due to influenza-like illness (ILI) has decreased. There were no influenza-associated pediatric deaths reported, and no influenza-associated outbreaks reported in Week 44.

Table 1: Summary of Texas Influenza (Flu) and Influenza-like Illness (ILI) Activity for the Current Week

Texas Surveillance Component	Change from Previous Week	Current Week	Previous Week [†]	Page of Report
Statewide ILINet Activity Indicator assigned by CDC (intensity of influenza-like illness)	No Change	Minimal	Minimal	-
Percentage of specimens positive for influenza by hospital laboratories	▼ 0.20%	1.65%	1.85%	2
Percentage of visits due to ILI (ILINet)	▼ 0.06%	1.71%	1.77%	4
Number of regions reporting increased flu/ILI activity	▼ 1	3	4	7
Number of regions reporting decreased flu/ILI activity	▼ 2	2	4	7
Number of variant/novel influenza infections	No Change	0	0	7
Number of ILI/influenza outbreaks	No Change	0	0	7
Number of pediatric influenza deaths	No Change	0	0	8

[†]Data displayed have been updated since last week's flu report with any new reports received.

Laboratory Results

Influenza

Hospital laboratories across Texas voluntarily report influenza tests (antigen, culture, and PCR) to the National Respiratory and Enteric Virus Surveillance System (NREVSS). Providers throughout Texas also submit specimens for influenza testing (PCR) to Texas public health laboratories, including the Texas Department of State Health Services (DSHS) state laboratory in Austin and the nine Texas Laboratory Response Network (LRN) laboratories. The results reported by Texas NREVSS participants and public health laboratories for the current week are summarized in the two tables below (Tables 2 and 3). Additional influenza test results (rapid tests, culture, PCR) and ILI activity were reported from providers and public health departments throughout the state (see county map at the end of this report).

Table 2: Influenza Testing Performed by Texas Hospital Laboratories for the Current Week

	Week 44	Season to Date Week Ending November 1, 2025
Number of labs reporting flu tests	14	
Number of specimens tested	3,508	15,587
Number positive specimens (%)	58 (1.65%)	167 (1.07%)
Percentage of total tests that were antigen detection tests	1.05%	
Positive specimens by type/subtype [n (%)]		
Influenza A	41 (70.69%)	126 (75.45%)
Subtyping performed	6 (14.63%)	18 (14.29%)
A (H1N1)	2 (33.33%)	7 (38.89%)
A (H3N2)	4 (66.67%)	11 (61.11%)
Subtyping not performed	35 (85.37%)	108 (85.71%)
Influenza B	17 (29.31%)	41 (24.55%)

Figure 1: Number and Percentage of Tests (Antigen, Culture, PCR) Positive for Influenza by Type and Subtype Reported by Texas Hospital Laboratories, 2025-2026 Season

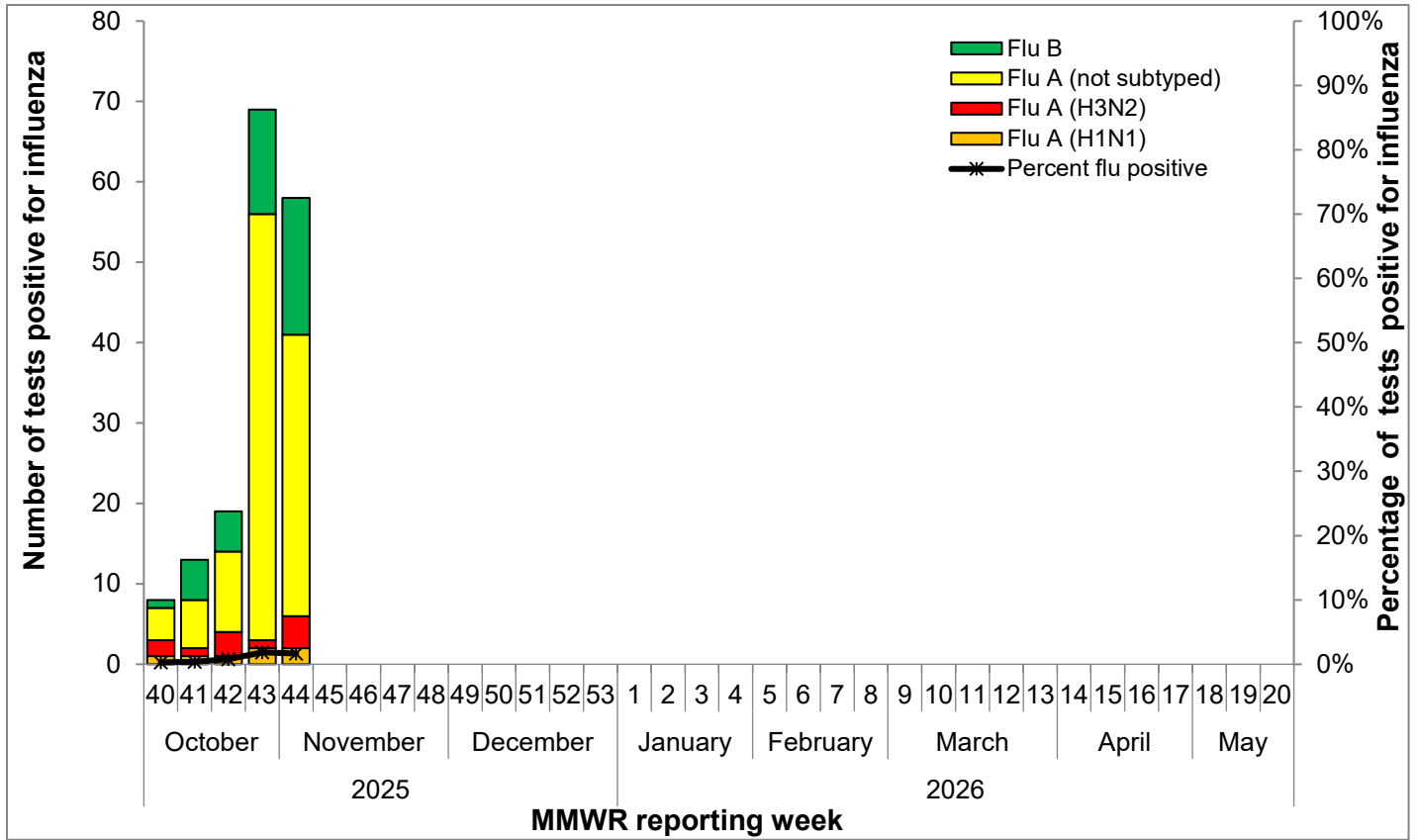
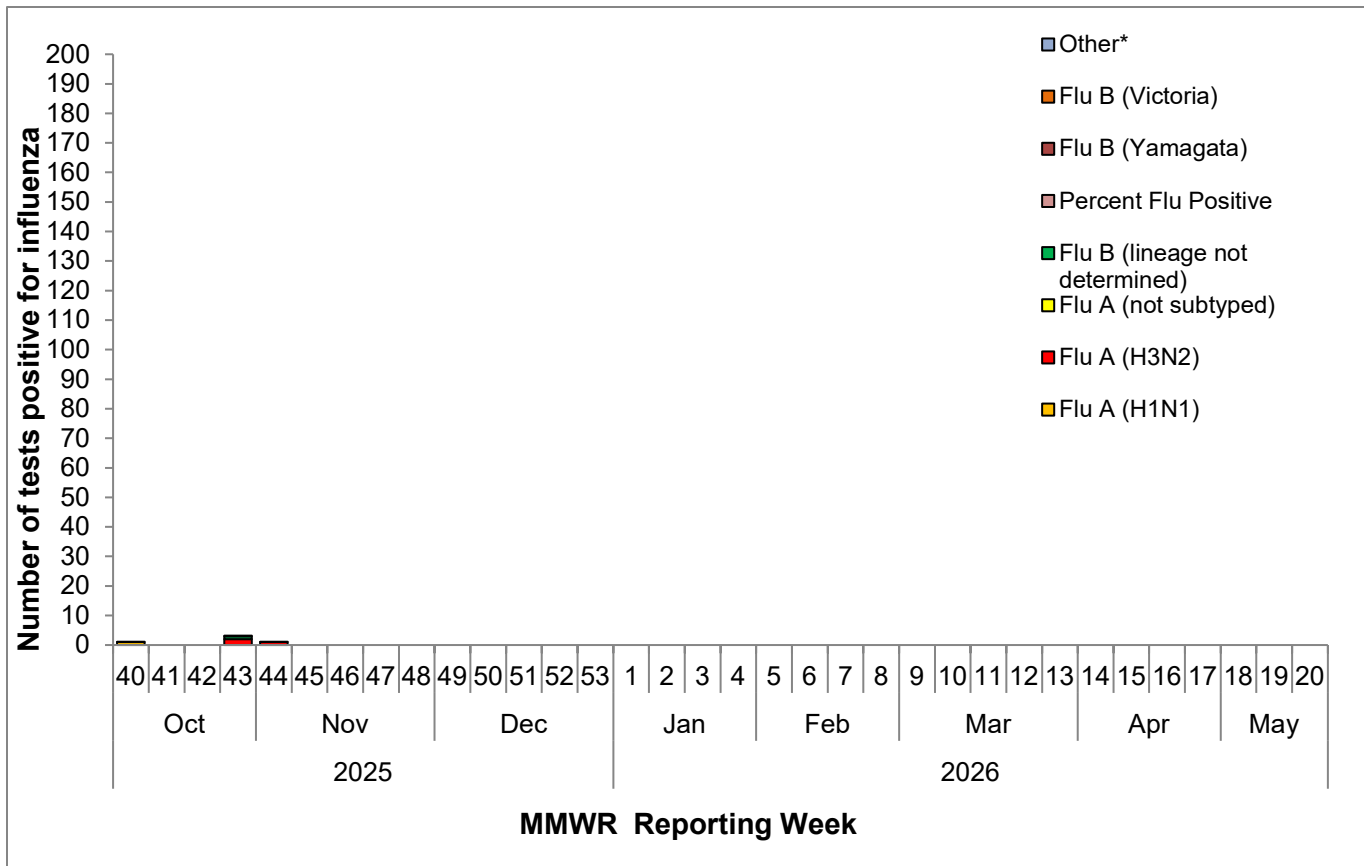


Table 3: Influenza Testing Performed by Texas Public Health Laboratories for the Current Week

	Week 44	Season to Date Week Ending: November 1, 2025
Number of labs reporting flu tests	4	
Number of specimens tested	10	51
Number of positive specimens (%)	1 (10.00%)	5 (9.80%)
Positive specimens by type/subtype/lineage [n (%)]		
Influenza A	1 (100.00%)	4 (80.00%)
Subtyping performed	1 (100.00%)	4 (100.00%)
A (H1N1)	0 (0.00%)	1 (25.00%)
A (H3N2)	1 (100.00%)	3 (75.00%)
Subtyping not performed	0 (0.00%)	0 (0.00%)
Influenza B	0 (0.00%)	1 (20.00%)
Lineage testing performed	0 (0.00%)	0 (0.00%)
B/Victoria	0 (0.00%)	0 (0.00%)
B/Yamagata	0 (0.00%)	0 (0.00%)
Lineage testing not performed	0 (0.00%)	0 (0.00%)
Other*	0 (0.00%)	0 (0.00%)

*Other denotes specimens with coinfections (i.e. one specimen was positive for both influenza A (H1N1) and influenza A (H3N2))

Figure 2: Number of Tests (PCR) Positive for Influenza by Type, Subtype, and Lineage Reported by Texas Public Health Laboratories, 2025-2026 Season



Subtype Final/Antigenic Characterization

Since September 29, 2025, CDC has reported subtype final/antigenic characterization results from Zero (0) Influenza A (H1N1), Zero (0) Influenza A (H3N2), and Zero (0) Influenza B virus received from the Texas Department of State Health Services (DSHS) Laboratory and the City of Houston Department of Health. The DSHS Laboratory and participating LRN Laboratories send a representative sample of influenza viruses to the CDC throughout the flu season.

Antiviral Resistance

No antiviral resistance testing data for Texas specimens is available presently.

U.S. Outpatient Influenza-like Illness Surveillance Network (ILINet)

Due to a lapse in Federal appropriation for Fiscal Year 2026 or a Continuing Resolution for the Department of Health and Human Services, CDC Influenza Division will not be updating FluView or FluView Interactive, but CDC is continuing to monitor national surveillance data.

Table 4: Texas ILINet Reporting and Patient Visit Summary for the Current Week

	Week 44
Number of providers reporting	43
Number of providers reporting patient visits	39
Number (%) of providers with at least one ILI case	32 (82.1%)
Percentage of all visits due to ILI	1.71%
Texas ILINet baseline [‡] , 2025-2026	3.83%

[‡]The baseline is the mean percentage of patient visits for ILI during non-influenza weeks for the previous three seasons plus two standard deviations. A "non-influenza week" is defined as a week that accounted for less than 2% of the season's total number of specimens that tested positive for influenza.

Special Note: The case definition was changed to capture respiratory pathogens causing illness, including CoVID-19, through the ILINet. The Influenza-like Illness (ILI) case definition is a patient with fever (≥ 100°F, 37.8°C) AND cough and/or sore throat.

Table 5: Percentage of Visits for Influenza-like Illness Reported by Texas ILINet Providers (as of 11/06/2025 10:00 AM)

Week	Providers Reporting	Number of ILI Cases by Age Group (Years)					Total ILI (all ages)	Total Patients	% ILI
		0-4	5-24	25-49	50-64	65+			
202540	46	235	412	204	68	45	964	45568	2.12%
202541	46	202	363	181	65	39	850	41301	2.06%
202542	45	233	346	188	71	43	881	43189	2.04%
202543	41	211	264	163	69	37	744	41965	1.77%
202544	43	196	240	158	56	35	685	39979	1.71%

Note: ILI percentages are not static from week to week. ILI percentages can change based on when the providers enter the ILI patient visits as providers can enter patient visits after the initial report week.

Figure 3: Percentage of Visits Due to Influenza-like Illness Reported by Texas ILINet Participants, 2025-2026 Season

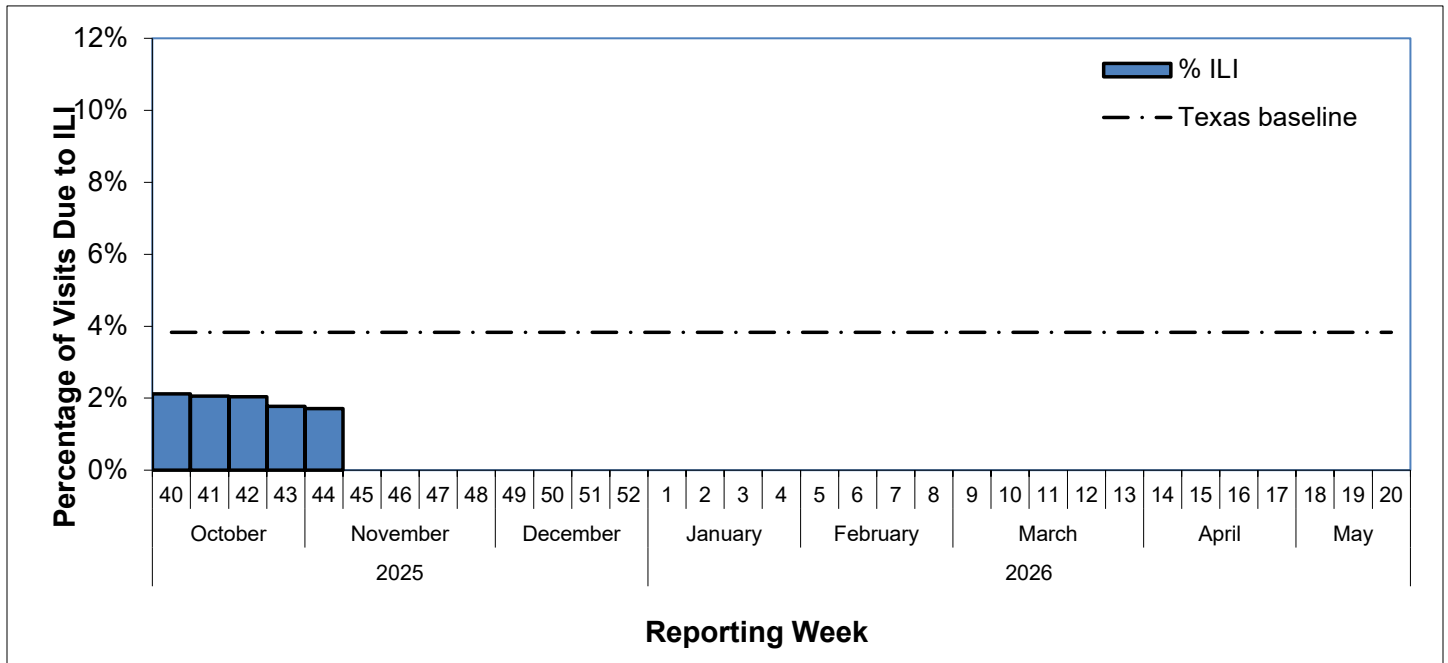
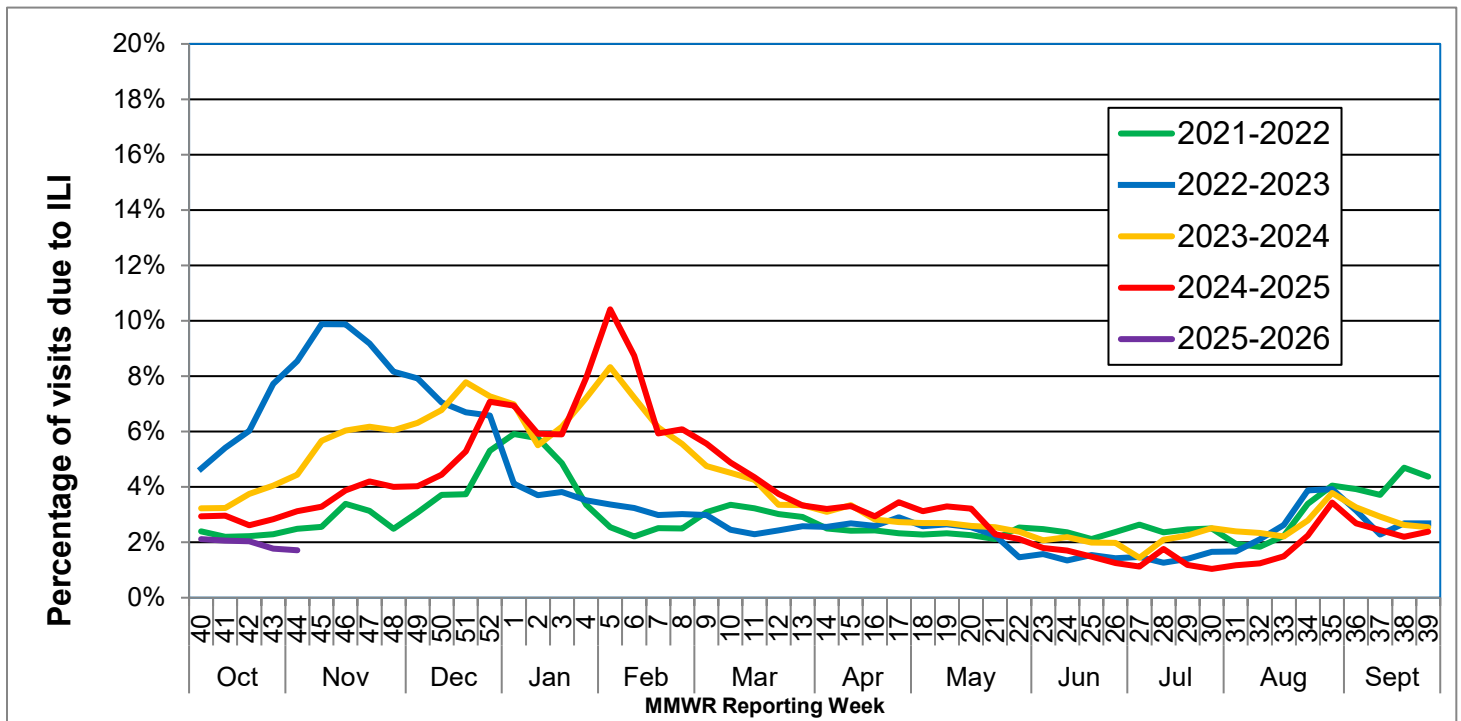


Figure 4: Percentage of Visits Due to Influenza-like Illness Reported by Texas ILINet Participants, 2021–2026 Season



Note: The 2020-2021 Flu Season contains MMWR week 202053. For graphical display compatibility with seasons containing 52 weeks, average values were generated using MMWR week 52 and 1

Reports from Public Health Regions

Reports were received from Public Health Regions (PHRs) during Week 44.

Table 6: Influenza Activity compared to Week 43 by Public Health Regions (PHRs).

Influenza Activity Comparison	
Increased	6/5S, 9/10, 11
Same	1, 4/5N, 7
Decreased	2/3, 8
Unsure	

Variant Influenza Viruses

No novel/variant influenza viruses have been detected in Texas during the 2024-2025 season.

Institutional Outbreaks and School Closures

No respiratory disease outbreaks were reported in Week 44.

P&I Mortality Surveillance Data

*Deaths due to COVID-19 may be classified as pneumonia deaths or influenza deaths (deaths due to “flu” or “flu-like illnesses”) in the absence of positive SARS-CoV-2 test results. Pneumonia and influenza (P&I) death data are obtained from death certificates of Texas residents whose underlying or contributing cause(s) of death is reported as pneumonia or influenza. P&I deaths are identified based on ICD-10 multiple cause of death codes for pneumonia and influenza related mortality.

P&I mortality surveillance data is not yet available for the 2025-2026 season.

Table 7: Texas P&I Deaths Occurring September 29, 2025 – November 1, 2025* by Age.

Age Category (years)	Number of P&I Deaths ⁺	Mortality Rate (per 100,000)
0 – 4	-	-
5 - 17	-	-
18 – 49	-	-
50 - 64	-	-
65 +	-	-
Overall	-	-

*NOTE: Data are provisional and subject to change, errors, and duplicates

+ If the cell count is less than 10, the number of P&I deaths is suppressed and <10 is written in the cell.

Table 8: Texas P&I Deaths Occurring September 29, 2025 – November 1, 2025* by Public Health Region (PHR).

PHR	Number of P&I Deaths ⁺	Mortality Rate (per 100,000)
1	-	-
2/3	-	-
4/5N	-	-
6/5S	-	-
7	-	-
8	-	-
9/10	-	-
11	-	-
Unknown	-	-
Overall	-	-

*NOTE: Data are provisional and subject to change, errors, and duplicates

+ If the cell count is less than 10, the number of P&I deaths is suppressed and <10 is written in the cell.

Influenza-Associated Pediatric Mortality

No influenza-associated pediatric mortalities were reported in Week 44.

Zero influenza-associated pediatric mortalities (0) have been reported in Texas during the 2025-2026 Influenza season. Cases of influenza-associated pediatric mortality (children <18 years of age) are reportable year-round by law in Texas.

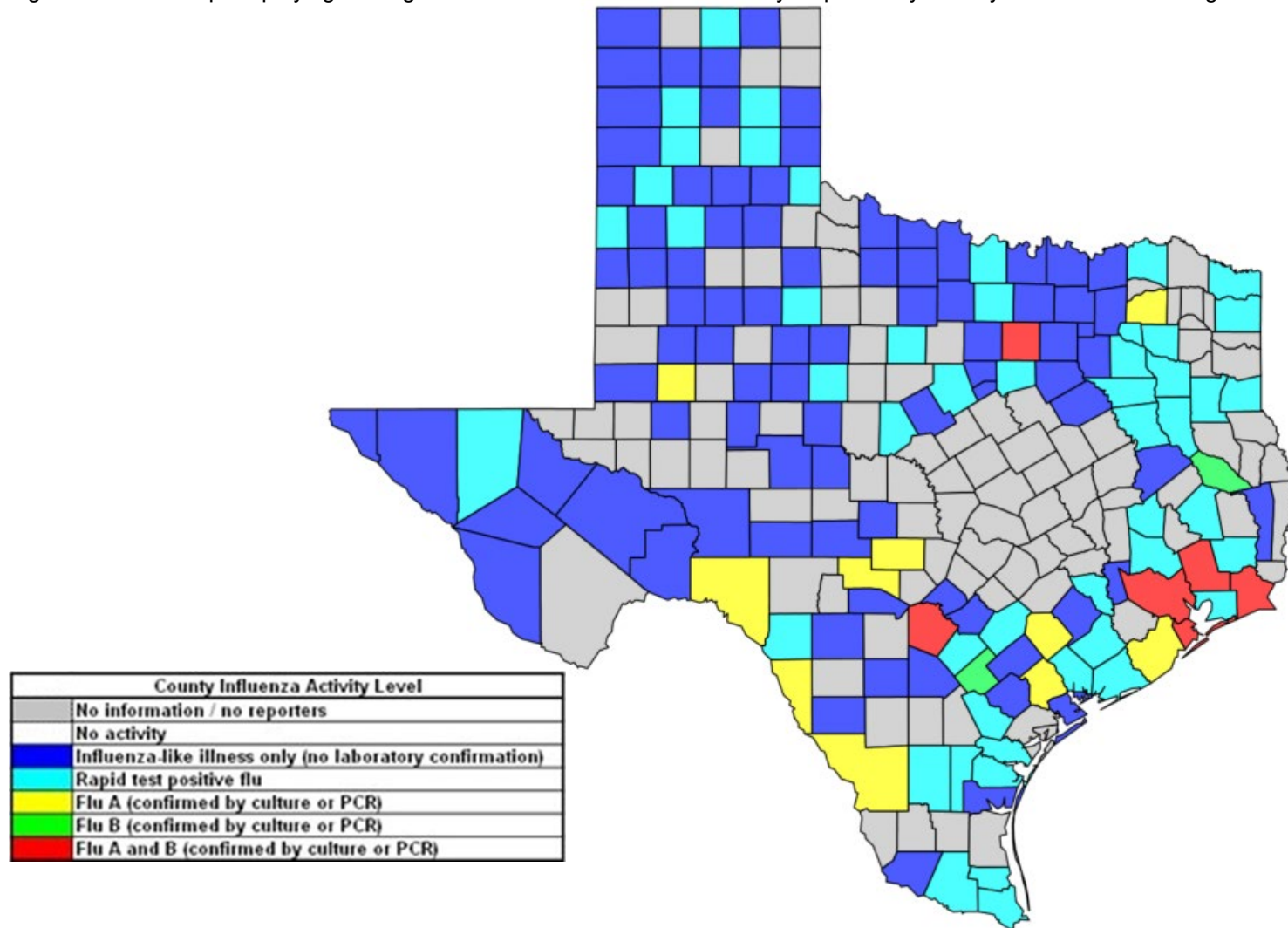
Table 9: Influenza-Associated Pediatric Deaths Reported in Texas during the 2025-2026 Season

Month of Pediatric Death	Influenza A (H1N1)	Influenza A (H3N2)	Influenza A (Not Subtyped)	Influenza B	Influenza, Not Typed / Not Differentiated	Influenza virus co-infection: A (not subtyped) and B	Total, All Influenza Types / Subtypes
2025							
October	0	0	0	0	0	0	0
November	0	0	0	0	0	0	0
Total*	0	0	0	0	0	0	0

*Total count of typed cases may be adjusted as lab testing and case investigation are completed; this does not alter total count of all cases (final column).

Statewide Influenza Activity Map

Figure 5: Texas Map Displaying the Highest Level of Influenza or ILI Activity Reported by County for the Week Ending November 1, 2025 (MMWR Week 44)



Please note: The majority of influenza cases are not reportable by law in Texas. This map contains data from sentinel sites and only displays influenza and ILI cases that were reported to public health. Positive laboratory results are reported according to specimen collection date, or date received in the laboratory if the former is unknown.

Respiratory Syncytial Virus (RSV) Surveillance

Respiratory Syncytial Virus (RSV) surveillance in Texas utilizes passive surveillance and is based on data submitted by providers and facilities to the National Respiratory and Enteric Virus Surveillance System (NREVSS). Data is reported in aggregate and is utilized by DSHS to produce the weekly surveillance graphs statewide and by health service regions. Some providers report RSV data directly to DSHS. As such, the weekly surveillance graphs may differ from NRVESS data. For a review of available RSV data by region, please see the addendum found at the end of this report.

Figure 6: Number and Percent of Antigen Tests Positive for Respiratory Syncytial Virus in the State of Texas, 2025-2026 Season

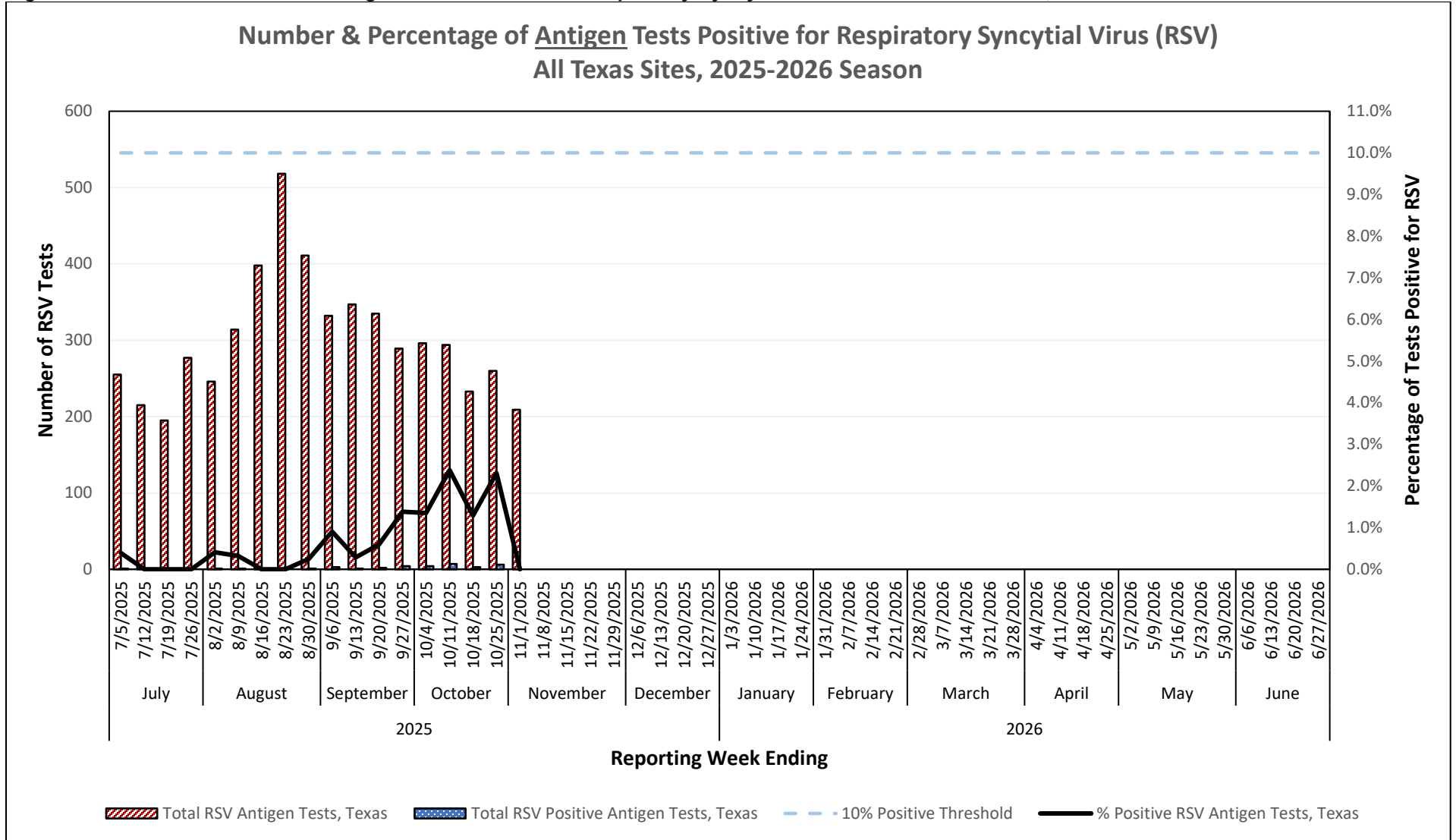
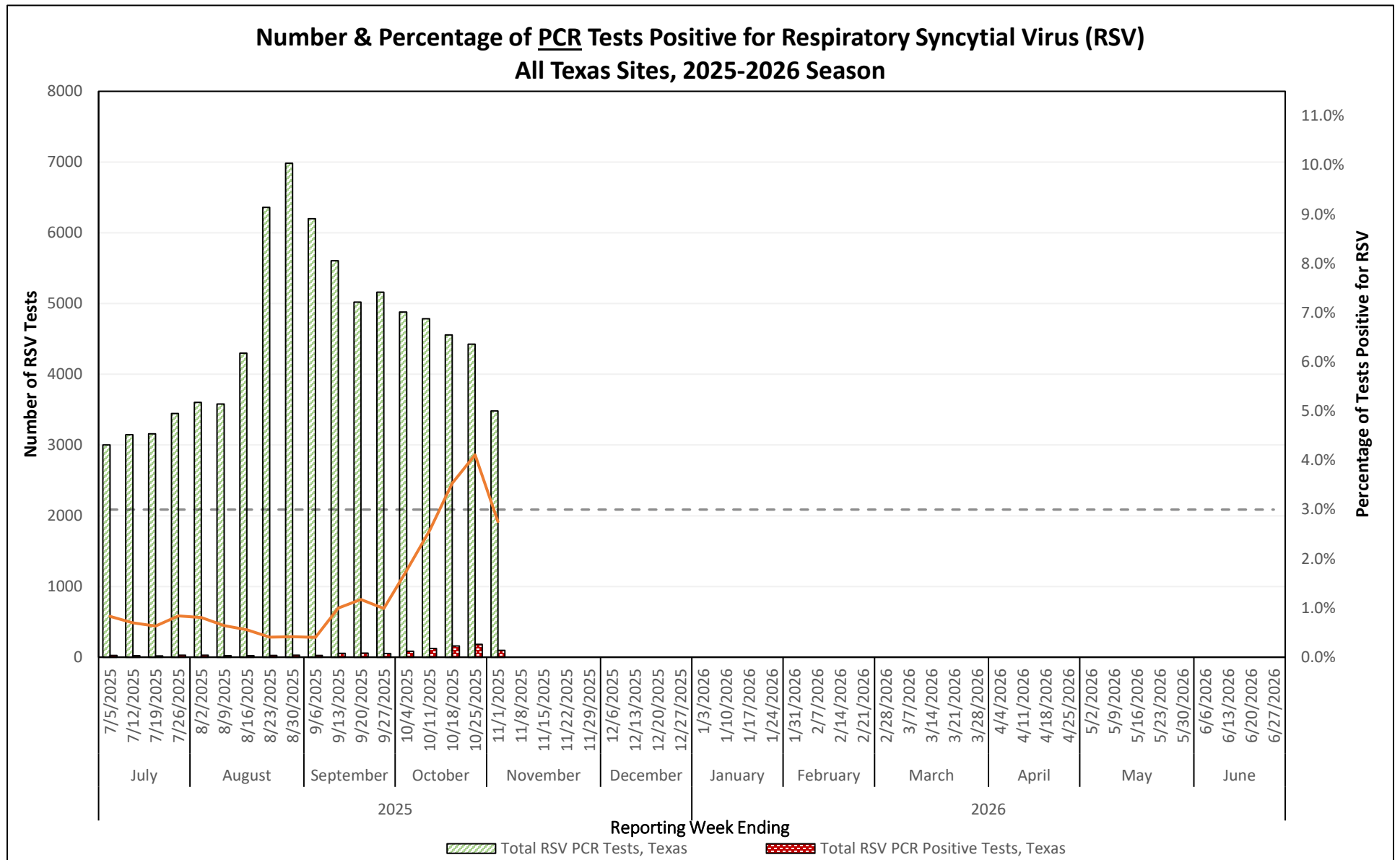


Figure 7: Number and Percent of PCR Tests Positive for Respiratory Syncytial Virus in the State of Texas, 2025-2026 Season



Other Respiratory Viruses

The NREVSS system collects information on a variety of respiratory viruses in addition to influenza including parainfluenza virus, respiratory syncytial virus (RSV), rhinovirus, human metapneumovirus (HMPV), seasonal coronavirus, and respiratory adenovirus. The results for the current week are summarized below.

Table 10: Non-Influenza Respiratory Virus Testing Performed by Texas NREVSS Laboratories for the Current Week

Virus	Number of Laboratories Testing	Tests Performed	Positive Tests	Percentage of Tests Positive
Adenovirus (respiratory)	15	1815	96	5.29%
HMPV	15	1815	11	0.61%
Parainfluenza virus	15	1815	119	6.56%
Rhino/enterovirus	15	2015	703	34.89%
RSV ^{†^}	17	3486	96	2.75%
Seasonal coronavirus (does not include MERS-CoV or COVID-19)	14	1803	30	1.66%

[†] RSV tests displayed in the table are a combination of antigen detection, PCR, and culture tests. Some non-NREVSS reporters also contribute to the RSV data.

[^] Numbers and percentage may differ from the weekly RSV report. The weekly RSV report may be accessed at <https://www.dshs.state.tx.us/RSV/disease/rsv-Data.aspx>.

COVID-19 Surveillance

Note: As of March 8, 2024, individual confirmed, and probable COVID-19 cases are no longer required to be reported to the Texas Department of State Health Services. Thus, as of March 8, 2024, COVID-19 case counts and associated rates represent COVID-19 cases which were reported to DSHS on a voluntary basis rather than a mandatory basis.

Summary

The Texas Department of State Health Services (DSHS) is working closely with the Centers for Disease Control and Prevention (CDC) in monitoring Coronavirus Disease 2019 (COVID-19). Multiple sources of data are being used to monitor the situation in Texas.

Between March 6, 2020, and the current report week, **9,432,615 confirmed and probable cases** of **COVID-19** were reported in Texas. So far for 2025, **104,173 confirmed and probable cases** of **COVID-19** were reported in Texas.

Table 11: Summary of COVID-19 Cases, COVID-19-Associated Fatalities, and Hospitalizations for the Current Reporting Week*

Texas Surveillance Component	Change from Previous Week	Current Week	Previous Week
New COVID-19 Cases (Probable and Confirmed)**	▼ 520	677	1,197
New COVID-19 Confirmed Cases**	▼ 396	399	795
New COVID-19 Probable Cases**	▼ 124	278	402
Total COVID-19 Cases (Probable and Confirmed)**	▲ 677	9,432,615	9,431,938
Total COVID-19 Confirmed Case**	▲ 399	7,161,296	7,160,897
Total COVID-19 Probable Cases**	▲ 278	2,271,319	2,271,041
Newly Reported COVID-19-Associated Fatalities	▼ 11	15	26
Hospitalized COVID-19 Cases (Day of Report)***	-	-	-
Hospitalized COVID-19 Cases(Rolling 7-Day Average)***	-	-	-

▲ = increase and ▼ = decrease

* Numbers and percentages might vary from the previous COVID-19 report due to additional data becoming available for non-finalized surveillance years. COVID-19 case data for 2020-2023 are finalized. All other data are provisional and subject to change.

** Cases for the current week include both cases reported in the last week and may include newly reported cases from prior weeks.

*** Hospitalization data are not currently available.

COVID-19 cases reported decreased in Texas by **43.4%** in **Week 44** compared to the previous MMWR Week.

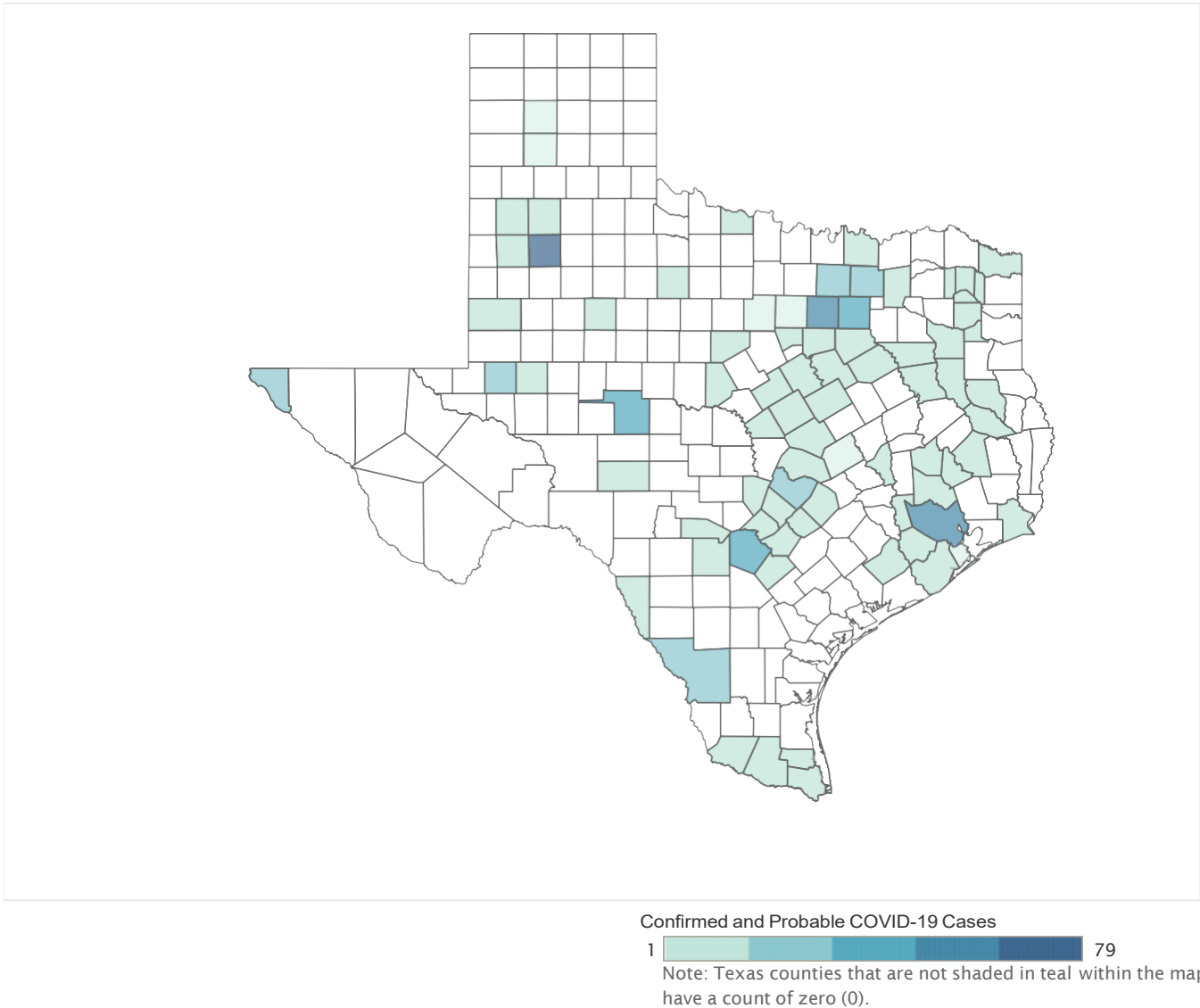
COVID-19-associated fatalities decreased **42.3%** in **Week 41** when compared to the previous week. COVID-19-associated fatalities are shown by week during which the death occurred, up to three weeks prior to current report week because death certificates are required to be filed within 10 days of date of death.

Note: Cumulative counts will consistently reflect all cases within the National Electronic Disease Surveillance System as of report date. Counts may include cases which were provided after initial reporting, such as backlogged cases; and reflect regular case quality assurance updates.

Weekly COVID-19 Case Map

A map of weekly confirmed and probable COVID-19 cases by county can be viewed below.

Figure 8: Texas Map Displaying COVID-19 Case Counts by County for the Current Reporting Week



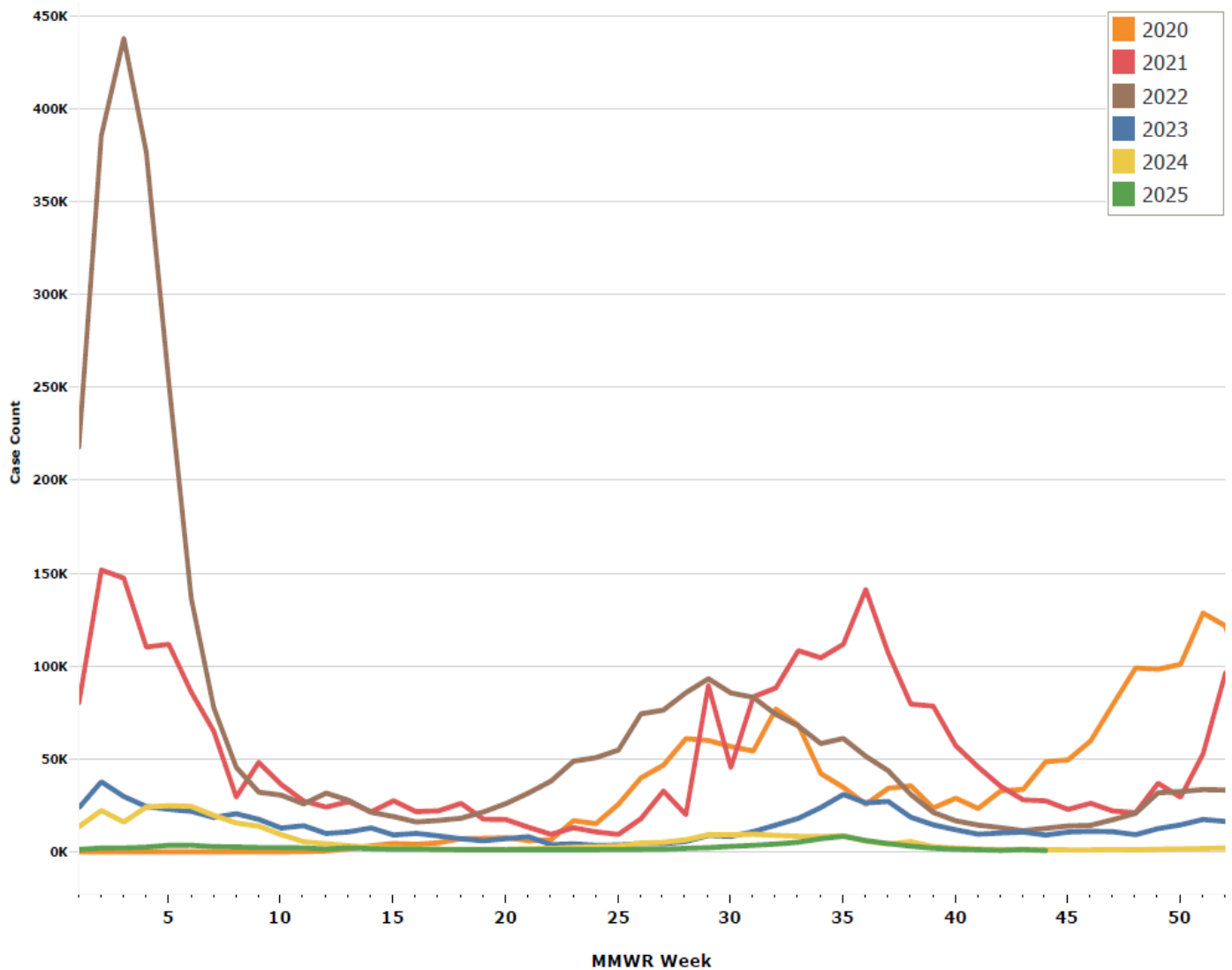
COVID-19 Case Map Notes

COVID-19 cases shown are for the MMWR week of the report. This count includes cases reported in the past week, as well as newly reported cases from prior weeks. All counts are provisional and subject to change.

The populations used are population projections from the Texas Demographic Center*. There may be COVID-19 cases with incomplete address reported to Texas DSHS which are not included in the COVID-19 Case Map by County, Figure 8

*Refer to Appendix 4 for the link to view the population projections from Texas Demographic Center

Figure 9: Cases of COVID-19 by MMWR Week, Texas, 2020 to Current Report Week (N = 9,432,615)



Note: The COVID-19 pandemic reported the first locally acquired SARS-CoV-2 case in Texas during the MMWR Week 10 in 2020. Prior to MMWR Week 10 in 2020 there were no locally acquired cases of SARS-CoV-2 infection reported among Texas residents. Case counts are reported based on all MMWR weeks as they are provided.

Laboratory Results

Providers throughout Texas submit specimens for SARS CoV-2 testing to Texas laboratories which are reported to the National Electronic Disease Surveillance System (NEDSS).

Statewide, COVID-19 laboratory reporting decreased in **Week 44**.

Table 12: Summary of All COVID-19 PCR and Antigen Tests Reported for the Current Week Versus the Previous Week

Test Reported	Change from Previous Week	Current Week	Previous Week
PCR Tests*	▼ 83	1,249	1,332
per 100,000 population	-	4.01	4.27
Antigen Tests*	▲ 20	304	284
per 100,000 population	-	0.98	0.91

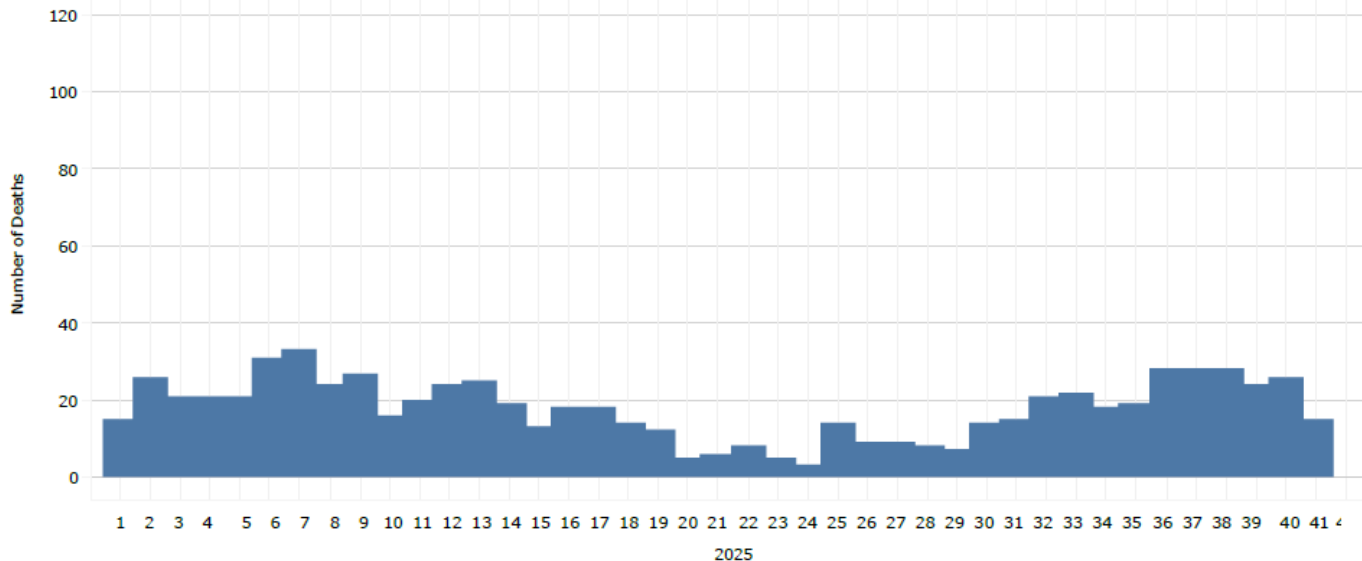
* As of June 15th, 2023, only positive tests must be reported to DSHS. Negative tests are no longer required to be reported, resulting in a decrease in the number of tests reported

COVID-19 Mortality

COVID-19 mortality data in this report are obtained from death certificates of Texas residents whose underlying or contributing cause(s) of death is reported as COVID-19. Reporting of deaths occurs up to three weeks following date of death. Data is provisional until data close out occurs.

730 † COVID-19-associated deaths were reported up to **MMWR Week 41** in 2025 from death certificates of Texas residents. There were **15 COVID-19-associated deaths** reported in **MMWR Week 41**. In total, **96,634 COVID-19 -associated deaths** have been identified from death certificates of Texas residents.

Figure 10: COVID-19 Associated Deaths Identified from Vital Statistics Data by MMWR Week of Death, MMWR Year 2025 Week 41



Note: Counts shown reflect the available death certificate data. This will be updated as death certificate data becomes available. Data exclude the most recent three MMWR weeks due to lag time inherent in death registration and reporting processes. Death certificate data should be considered provisional and subject to change as additional information becomes available.

Table 13: COVID-19-Associated Mortality Rate by Age for the Current Year*

Age Group	Total Number of COVID-19 Deaths (2025) †	Total Mortality Rate (Per 100,000) (2025) †	MMWR Week Total Number of COVID-19 Deaths***	MMWR Week Mortality Rate (per 100,000)****
<1 year	<10	<10	<10	<10
1-9 years	<10	<10	<10	<10
10-19 years	<10	<10	<10	<10
20-29 years	<10	<10	<10	<10
30-39 years	11	0.24	<10	<10
40-49 years	<10	<10	<10	<10
50-59 years	26	0.72	<10	<10
60-64 years	19	1.11	<10	<10
65-69 years	42	2.71	<10	<10
70-74 years	64	5.19	<10	<10
75-79 years	99	10.74	<10	<10
80+ years	374	35.60	<10	<10
Unknown	77	N/A	<10	<10
Overall	730	2.27	15	0.05

*If the cell number of deaths is less than 10, the number or percent of COVID-19 deaths is suppressed and <10 or n/a is written in the cell. The population estimates from the Texas Demographic Center are used for population rates. Data is provisional and subject to change, errors, and duplicates.

† Refer to Texas COVID-19 Surveillance Components and Measures on page 22, Section: Mortality

Table 14: COVID-19-Associated Mortality Rate by Race/Ethnicity for the Current Year*

Race/Ethnicity	Total Number of COVID-19 Deaths (2025) †	Total Mortality Rate (per 100,000) (2025) †	MMWR Report Week Number of COVID-19 Deaths***	MMWR Report Week Mortality Rate (per 100,000)****
White	457	3.66	<10	0.07
Black	49	1.25	<10	0.03
Hispanic	193	1.47	<10	0.03
Asian	26	1.35	<10	0.05
Other Race	<10	0.64	<10	0.00
Unknown Race/Ethnicity	<10	0.00	<10	0.00
Overall	730	2.27	15	0.05

*If the cell number of deaths is less than 10, the number or percent of COVID-19 deaths is suppressed and <10 or n/a is written in the cell. The population estimates from the Texas Demographic Center are used for population rates. Data is provisional and subject to change, errors, and duplications.

Table 15: COVID-19-Associated Mortality Rate by PHR for the Current Year*

PHR	Total Number of COVID-19 Deaths (2025) †	Total Mortality Rate (per 100,000) (2025) †	MMWR Report Week Number of COVID-19 Deaths***	MMWR Report Week Mortality Rate (per 100,000)****
PHR 1	37	3.96	<10	0.11
PHR 2/3	207	2.20	<10	0.05
PHR 4/5N	46	2.94	<10	0.13
PHR 6/5S	155	1.77	<10	0.03
PHR 7	80	2.03	<10	0.05
PHR 8	71	2.08	<10	0.06
PHR 9/10	53	3.04	<10	0.46
PHR 11	81	3.36	<10	0.08
Overall	730	2.27	15	0.05

*If the cell number of deaths is less than 10, the number or percent of COVID-19 deaths is suppressed and <10 or n/a is written in the cell. The population estimates from the Texas Demographic Center are used for population rates. Data is provisional and subject to change, errors, and duplicates.

Table 16: COVID-19-Associated Mortality Rate by Sex for the Current Year*

Sex	Total number of COVID-19 Deaths (2025) †	Total Mortality Rate (per 100,000) (2025) †	MMWR Report Week Number of COVID-19 Deaths***	MMWR Report Week Mortality Rate (per 100,000)****
Female	341	2.10	<10	0.04
Male	389	2.43	<10	0.05
Overall	730	2.27	15	0.05

*If the cell number of deaths is less than 10, the number or percent of COVID-19 deaths is suppressed and <10 or n/a is written in the cell. The population estimates from the Texas Demographic Center are used for population rates. Data is provisional and subject to change, errors, and duplicates.

† Refer to Texas COVID-19 Surveillance Components and Measures on page 22, Section: Mortality.

COVID-19 Sequencing and Variant Surveillance

An interactive version of the CDC COVID-19 variant dashboard can be viewed at:

<https://covid.cdc.gov/covid-data-tracker/#variant-proportions>

Information provided on this page has been sourced from the CDC Variant Proportions Webpage.

Due to low numbers of sequences being reported to CDC, precision in the most recent reporting period is low. CDC is moving to longer reporting periods to gather the number of sequences required to provide reliable Nowcast estimates.

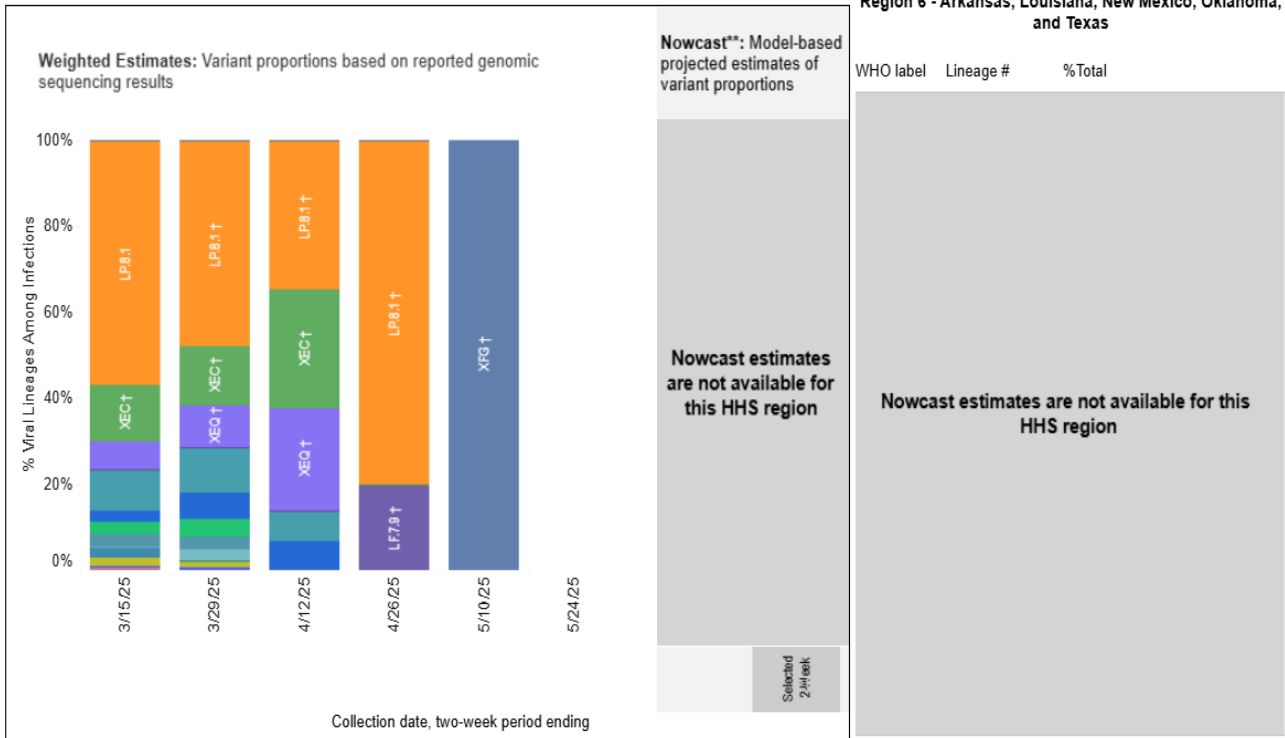
Region 6 - Arkansas, Louisiana, New Mexic... 6/21/2025(Nowcast)

This shows weighted and Nowcast estimates for the United States. The table and map show estimates for the 2-week period ending on 6/21/2025(Nowcast) if available. Due to low numbers of sequences being reported to CDC, precision in the most recent reporting period is low. CDC is moving to longer reporting periods to gather the number of sequences required to provide reliable Nowcast estimates.

Weighted Estimates in HHS Region 6 for 2-Week Periods in 3/2/2025 – 6/21/2025

Nowcast Estimates in HHS Region 6 for 6/8/2025 – 6/21/2025

Hover over (or tap in mobile) any lineage of interest to see the amount of uncertainty in that lineage's estimate.



** These data include Nowcast estimates, which are modeled projections that may differ from weighted estimates generated at later dates
 # Enumerated lineages are US VOC and lineages circulating above 1% nationally in at least one 2-week period. "Other" represents the aggregation of lineages which are circulating <1% nationally during all 2-week periods displayed. While all lineages are tracked by CDC, those named lineages not enumerated in this graphic are aggregated with their parent lineages, based on Pango lineage definitions, described in more detail here: <https://web.archive.org/web/20240116214031/https://www.pango.network/the-pango-nomenclature-system/statement-of-nomenclature-rules>.

Nowcast estimates are only available for HHS regions having above 300 sequences in the two weeks ending 05/24/2025

Note: Further information about data sources, limitations, and context is described in the Texas COVID-19 Surveillance Components and Measures Section of this report on Variant Dashboard Limitations on page 22.

Surveillance Components and Measures

Texas Influenza Surveillance Components and Measures

Activity codes (see <http://www.cdc.gov/flu/weekly/overview.htm>)

Statewide influenza activity level

A code reported weekly by states and territories to CDC indicating the geographic spread of influenza in the state. Levels are no activity, sporadic, local, regional, and widespread.

ILINet Activity Indicator

A statewide level of influenza-like illness intensity (on a scale of 1-10, with 1 being the lowest level) assigned to each state weekly by CDC based on data reported through ILINet.

Morbidity

Novel/variant influenza

Thorough investigations are performed on all cases of novel/variant influenza. *This condition is reportable by law in Texas.*

Texas ILINet

Providers voluntarily report weekly to CDC's ILINet system on the number of outpatient visits for ILI and total outpatient visits. Providers may submit up to 5 specimens per month for influenza testing. **See <http://www.dshs.state.tx.us/idcu/disease/influenza/surveillance/ILINet/> for information on how to become an ILINet provider.**

ILI activity

Non-ILINet providers report ILI or influenza data weekly to local or regional health departments.

Outbreaks

Healthcare, schools, childcare, and correctional facilities report ILI and influenza outbreaks to health departments in Texas. *This condition is reportable by law in Texas.*

Mortality

Pneumonia and Influenza (P&I) Mortality Surveillance

The DSHS Vital Statistics Unit collects death certificate information for all deaths on Texas residents from various partners such as funeral homes and local registrars around the state. The death certificates are then sent to the National Center for Health Statistics (NCHS) where the cause of death and underlying causes of death on the death certificates are coded with ICD-10 mortality codes. Once death certificates are coded, the information is sent back to DSHS Center for Health Statistics (CHS). CHS produces a Weekly Pneumonia and Influenza (P&I) Death Report and sends it to the State Influenza Surveillance Coordinator for inclusion in the Texas Weekly Flu Report. P&I deaths are identified based on ICD-10 multiple cause of death codes, and in particular, pneumonia and influenza mortality codes. Delays inherent in death reporting and coding practices may cause the number of reported P&I deaths to vary considerably each week.

Influenza-associated pediatric deaths

Deaths that are associated with influenza in children < 18 years of age are reported to health departments in Texas. *This condition is reportable by law in Texas.* <http://www.dshs.state.tx.us/idcu/disease/IAPM/>

Laboratory

DSHS Austin laboratory

Providers voluntarily submit specimens to the DSHS Austin laboratory for influenza PCR testing throughout the season. Providers sign up for this program through their local health departments.

Laboratory Response Network (LRN) laboratories

Providers voluntarily submit specimens to one of the 9 Texas LRNs for influenza PCR testing throughout the season. Providers sign up for this program through their local health departments.

NREVSS

Laboratories voluntarily report influenza and other respiratory virus data weekly through the CDC's online NREVSS reporting system. **Laboratories sign up for this program by contacting DSHS.** <http://www.cdc.gov/surveillance/nrevss/>

Recommended Resources

Texas Department of State Health Services

DSHS influenza page: <http://www.texasflu.org/>

Influenza surveillance data and reports: <http://www.dshs.state.tx.us/idcu/disease/influenza/surveillance/>

Map of Texas Health Service Regions: <http://www.dshs.state.tx.us/regions/state.shtm>

Centers for Disease Control and Prevention

National FluView weekly flu report: <http://www.cdc.gov/flu/weekly/>

Variant influenza viruses: <http://www.cdc.gov/flu/swineflu/variant.htm>

Avian influenza viruses: <http://www.cdc.gov/flu/avianflu/index.htm>

Swine influenza viruses: <http://www.cdc.gov/flu/swineflu/index.htm>

Infection Control in Healthcare Facilities: <http://www.cdc.gov/flu/professionals/infectioncontrol/>

Seasonal Flu Information for Schools and Childcare Providers: <http://www.cdc.gov/flu/school/index.htm>

Texas Respiratory Syncytial Virus (RSV) Surveillance Components and Measures

Technical Notes

The start of RSV season is the first of two consecutive weeks with $\geq 10\%$ of tests positive, and the end is the last of two consecutive weeks with $\geq 10\%$ of tests positive.

“The percentage of positive detections reflects test ordering practices and might not directly reflect disease burden.”
Centers for Disease Control and Prevention. Respiratory Syncytial Virus-United States, July 2007-June 2011. Morbidity and Mortality Weekly Report (MMWR). September 2011; 60 (35):1203-1206.

National and state RSV analyses typically rely on antigen test data; however PCR testing is also becoming more common.

Regional-level results may not be reliable if the number of RSV tests performed each week is small or if reporting is inconsistent. There is currently insufficient data/ participating RSV reporters to properly present trends for the following regions:

PHR 10 (Upper Rio Grande/El Paso)

RSV is not a notifiable condition in Texas. Sentinel laboratories voluntarily enter their RSV data weekly into the CDC National Respiratory and Enteric Virus Surveillance System (NREVSS), and these data are compiled to create the Texas Weekly RSV Report

Texas COVID-19 Surveillance Components and Measures

Provisional Data

Provisional data may not be complete. More data may be coming in to complete the data set, and DSHS and others have not completed quality checks of the information. Provisional data become final once the data set is complete and quality checks are finished. That process often takes several months.

COVID-19 Case Reporting

Investigations are performed on all cases of Coronavirus Disease 2019 (COVID-19). This condition is reportable by law in Texas.

Confirmed Case

A person who has tested positive through a molecular test that looks for the virus's genetic material. Texas uses the confirmed case definition adopted by the Council of State and Territorial Epidemiologists (CSTE). See the DSHS Epidemiologic Case Criteria Guide for full case definition.

Probable Case

A person who has tested positive through an antigen test. Texas uses the probable case definition adopted by the Council of State and Territorial Epidemiologists (CSTE).

New Confirmed Cases, New Probable Cases or Newly Reported Fatalities

Cases or fatalities reported for the first time on the DSHS COVID-19 report that day.

Mortality

Due to constraints related to COVID-19 funding, updates to the COVID-19 fatality data may be delayed, and some information might be missing or not aligned with the latest MMWR report.

COVID-19-associated deaths in Texas Residents.

Deaths associated with COVID-19 are reported to health departments in Texas. Deaths suspected of being caused by a reportable disease are required to be reported in accordance with Texas Health and Safety Code §81.045. Death certificates must be filed with Texas DSHS within 14 days of the date of death but may be amended at a later date. COVID-19 associated deaths are deaths for which COVID-19 is listed as a cause of death on the death certificate. A medical certifier, usually a doctor, determines the cause(s) of death. DSHS does not include deaths of people who had COVID-19 but died of an unrelated cause. Fatalities are reported by where the person lived as listed on the death certificate. Fatality data may include both confirmed and probable cases. **Data is considered provisional and subject to update as additional information becomes available until annual data has been finalized.**

†While reviewing report production methods, the 2023 COVID-19-Associated Deaths count as well as 2023 subtotals reported within tables 3 through 6 were found to have incorporated fatalities that had been reported with dates of death up through the report date rather than up through the end of the MMWR week. This has been corrected as of the MMWR week 38 report. The 2023 count thus was adjusted from with the original calculation method to the displayed count.

Laboratory

Positive SARS-CoV-2 laboratory results are reported to the Texas DSHS National Electronic Disease Surveillance System (NEDSS) by laboratories or local health departments. Positive SARS-CoV-2 laboratory results, including antigen, antibody, and molecular tests performed under CLIA oversight must be reported to Texas DSHS in accordance with Texas Health and Safety Code §81.045. This number does not include tests with results pending. Testing data is considered provisional and subject to update as additional information becomes available until annual data has been finalized.

Genomic Surveillance

Variants of SARS-CoV-2, the virus that causes COVID-19, are expected to continue to emerge, a natural process that occurs as viruses spread. Some variants will disappear, and others will continue to spread and may overtake previous variants. For example, the ancestral strain of the virus that caused the first Texas COVID-19 cases in early 2020 is no longer being detected. It was displaced by the Alpha variant, followed by the Delta variant and Omicron variants and may continue to be replaced by other emerging variants.

The Texas SARS-CoV-2 genomic sequencing data includes data provided by the CDC's commercial partner laboratories as a part of the national SARS-CoV-2 genomic surveillance program, sequencing conducted at academic and commercial laboratories, and Texas Department of State Health Services Austin Laboratory's genomic sequencing. The programs sequence hundreds of COVID-19 cases each week to monitor the spread of variants in Texas. This information helps scientists and public health professionals understand how the virus spreads and changes over time. It also helps researchers know whether existing COVID-19 tests, treatments, and vaccines will continue to work against emerging variants.

This report shows data on variants of concern (VOC), variants of interest (VOI) and variants being monitored (VBM) with all other variants grouped together. More information on variant classification is available on the CDC website at <https://www.cdc.gov/coronavirus/2019-ncov/variants/>

Lab Confirmed COVID-19 Patients in Texas Hospitals

The total number of patients in Texas hospitals who have tested positive for COVID-19.

Appendix

Appendix 1: COVID-19 Data Sources and Limitations

Data sources for this report are Texas DSHS Vital Statistics, COVID-19-Associated Fatalities, and National Electronic Disease Surveillance System (NEDSS), each of which have associated limitations. The use of multiple data sources can lead to overestimation through duplication of case reports within each system, and between systems. COVID-19 case investigation data entered in NEDSS is dependent upon accurate user entry of case information into the system and resources available for public health follow up.

Limitations

Vital Statistics

- Delay in reporting of COVID-19-associated fatalities of 10-14 days on average from date of death.

NEDSS

- Cases created off electronic laboratory report (ELR) feed may be missing information, such as patient race or ethnicity, or complete address.
- The completeness of case investigations is dependent on the information available to case investigators in the initial report, the resources available to local health departments for case follow up, and the availability of medical records and the information provided by the case.
- Case count data from 2020 and 2021 is considered finalized. Data from 2022 and 2023 are considered provisional and subject to update until data are finalized.

Note: DSHS completed the process of transferring case investigations from the COVID Case Investigation System (CCIS) to the Texas National Electronic Disease Surveillance System (NEDSS) in November 2021. Deduplication between cases entered into CCIS and NEDSS has taken place, and the transition was completed as of 11/15/2021. NEDSS data cited in this report is provisional and subject to the limitations of resources available for case investigation, the participation of the public in case investigation, and the process of transition from CCIS to NEDSS. Deduplication of newly reported COVID-19 laboratory results in NEDSS occurs automatically prior to data ingestion into NEDSS preventing generation of duplicate case reports.

Variant Dashboard Limitations

Due to constraints related to COVID-19 funding, updates to the data may be delayed, and some information might be missing or not aligned with the latest MMWR report.

The data shown in this report is collected by the CDC's commercial partner laboratories as a part of the national SARS-CoV-2 genomic surveillance program, commercial laboratories, academic laboratories, and Texas Department of State Health Services Austin Laboratory's genomic sequencing. Because samples collected by CDC National SARS-CoV-2 Strain Surveillance (NS3) partner laboratories are intended to be representative of Texas' proportion of the national population and estimate the prevalence of variants statewide, this data is not intended to count every variant case present in Texas. It does not necessarily represent geographic trends within the state of Texas. Some areas may be oversampled due to high numbers of participating laboratories. Local health officials may have more specific information regarding variant cases in their jurisdictions. No sample weighting is applied to this data. Sequencing results included in this data set take an average of 11 days from initial sample collection to report date. DSHS will post results after two weeks so that there will be enough results to represent a reliable estimate. The data visualization on the DSHS website is updated weekly on Tuesdays before 5 pm. Data is displayed by week of sample collection. Data should be considered preliminary and subject to change.

COVID Case Numbers

Case numbers and percentages might vary from the previous COVID-19 report due to continual changes in previous week totals. Data are provisional and are subject to change.

Possible attributes of various case numbers:

- Backlog from of COVID-19 results from reporting facilities
- Electronic laboratory reporting (ELR) failure in importing lab data
- Evidence of increased transmissibility
- Evidence of increased disease severity

Appendix 2: COVID-19 Data Cleaning Procedures

This report is generated on a weekly cycle, with the report prepared on Thursdays covering a one-week period beginning and ending the previous MMWR week.

Deduplication occurs routinely within NEDSS and ELR imports are prevented from creating duplicate case investigation and patient records if records matching first name, last name, date of birth and patient sex already exist. Data cleaning for this report included removal of out of state cases, matching residency based on patient address and county assignment in NEDSS. County of residency is determined based on zip code of residence, followed by provider zip code if residence zip code is unavailable. If both provider and residence zip codes are unavailable, ordering facility zip code is used. Out of bounds dates for specimen collection pre-January 1, 2020, and post report date are recoded as blank.

For the ELR Lab data file, the following cleaning procedures were used; out of state data was removed, residency is determined based on zip code of residence, followed by provider zip code if residence zip code is unavailable. If both provider and residence zip codes are unavailable, ordering facility zip code is used. Records are deduplicated by testing lab accession number, specimen collection date, ordered test code and reporting facility CLIA.

Appendix 3: COVID-19 MMWR Weeks

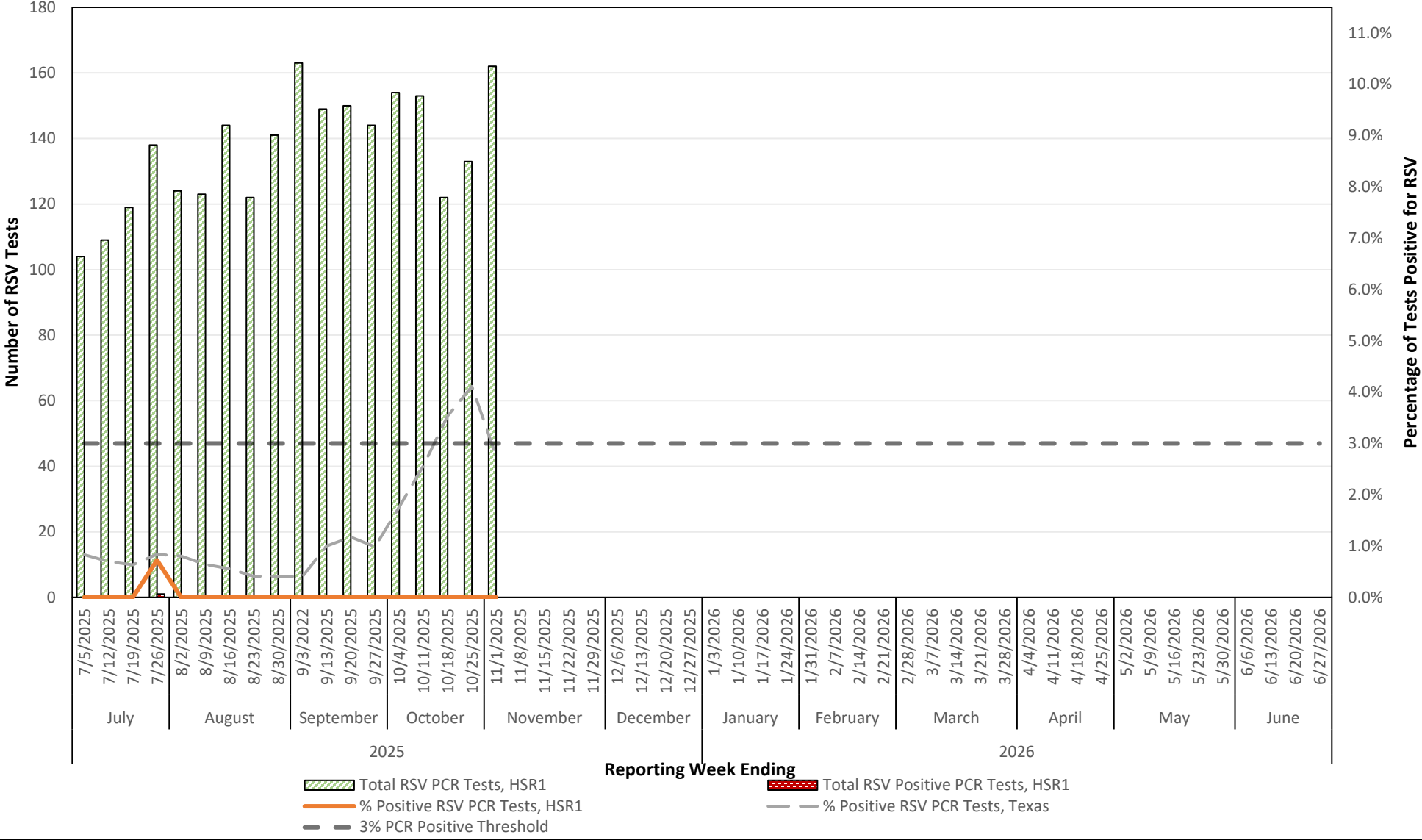
For a full list of MMWR Week dates please visit: <https://ndc.services.cdc.gov/wp-content/uploads/MMWR-Week-Log-2022-2023.pdf>

Appendix 4: COVID-19 Texas Demographic Center

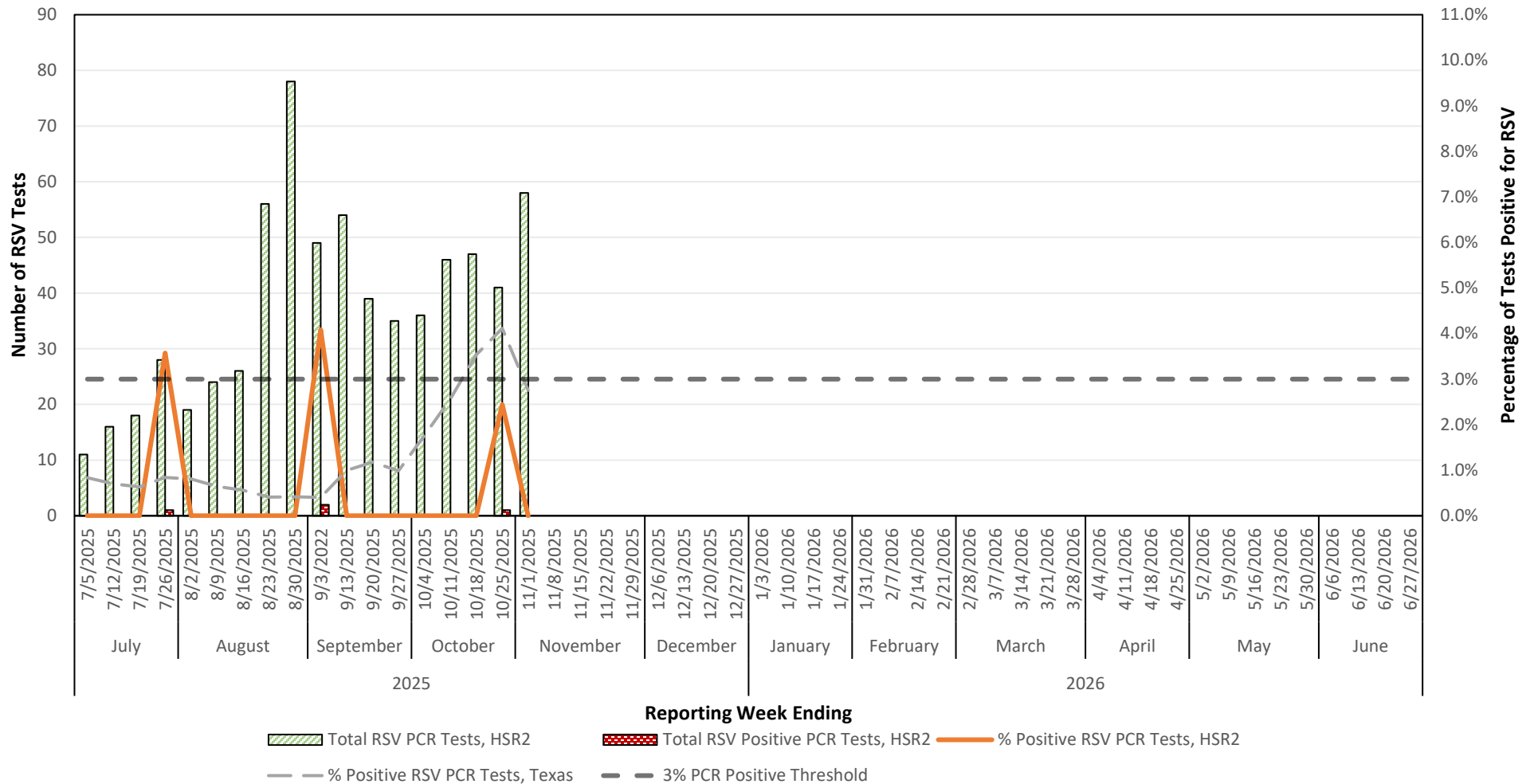
For population projections in Texas by county, please visit: <https://demographics.texas.gov/Projections/>

Appendix 5: Texas Respiratory Syncytial Virus (RSV) Surveillance by Health Service Region

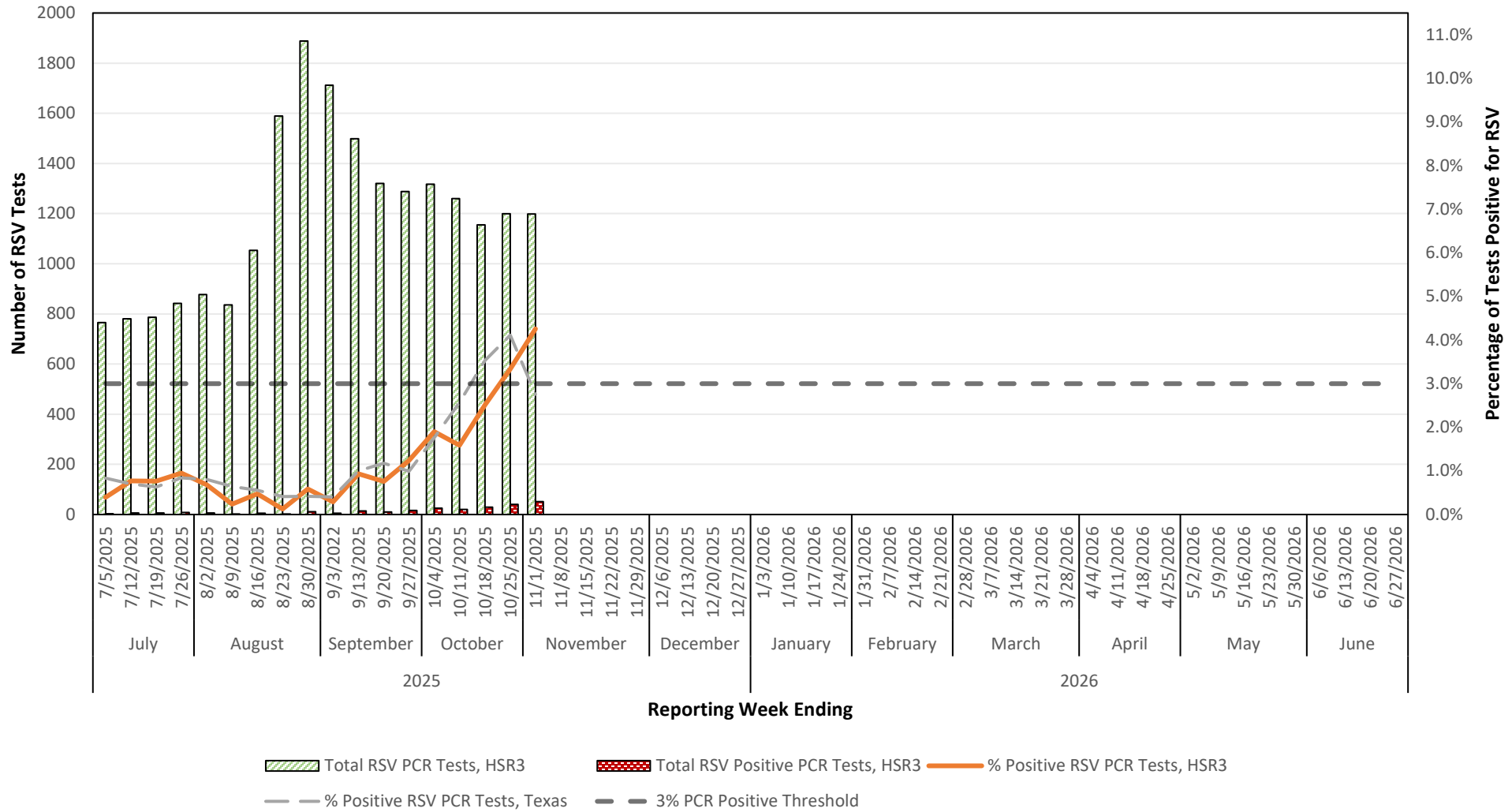
Number & Percentage of PCR Tests Positive for Respiratory Syncytial Virus (RSV)
 Health Service Region 1 (High Plains/Panhandle), 2025-2026 Season



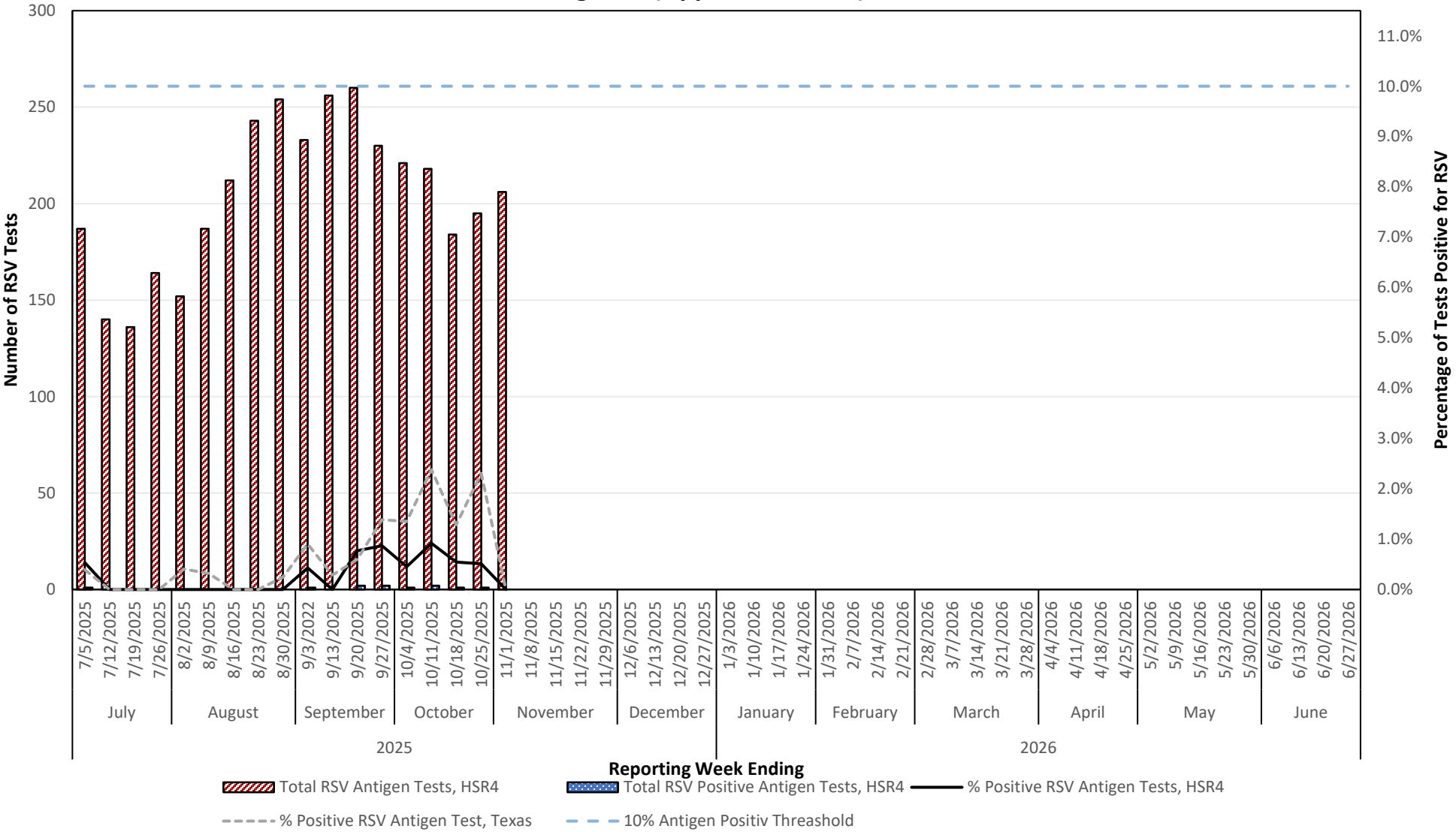
Number & Percentage of PCR Tests Positive for Respiratory Syncytial Virus (RSV) Health Service Region 2 (Northwest Texas), 2025-2026 Season



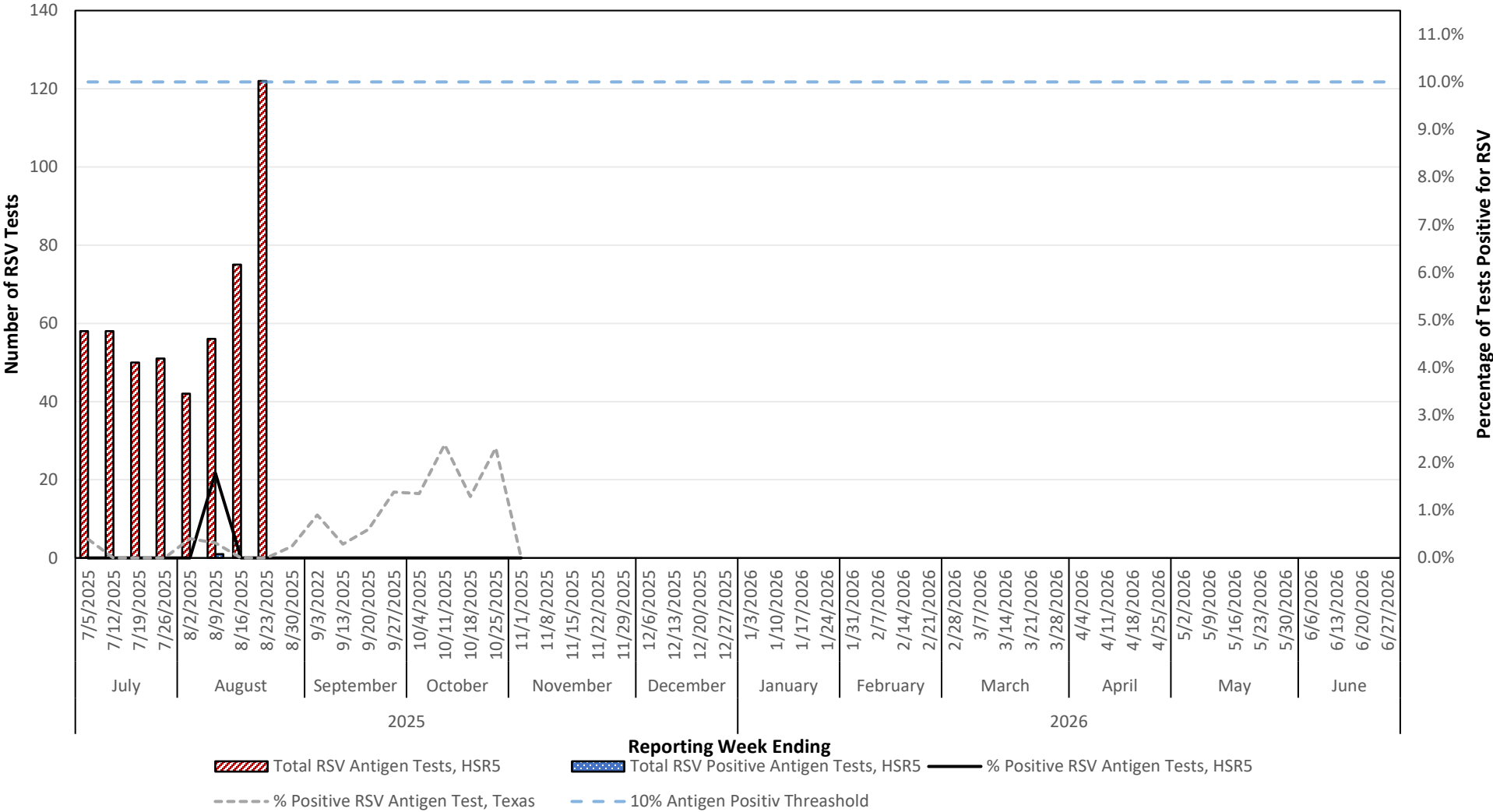
Number & Percentage of PCR Tests Positive for Respiratory Syncytial Virus (RSV) Health Service Region 3 (DFW Metroplex), 2025-2026 Season



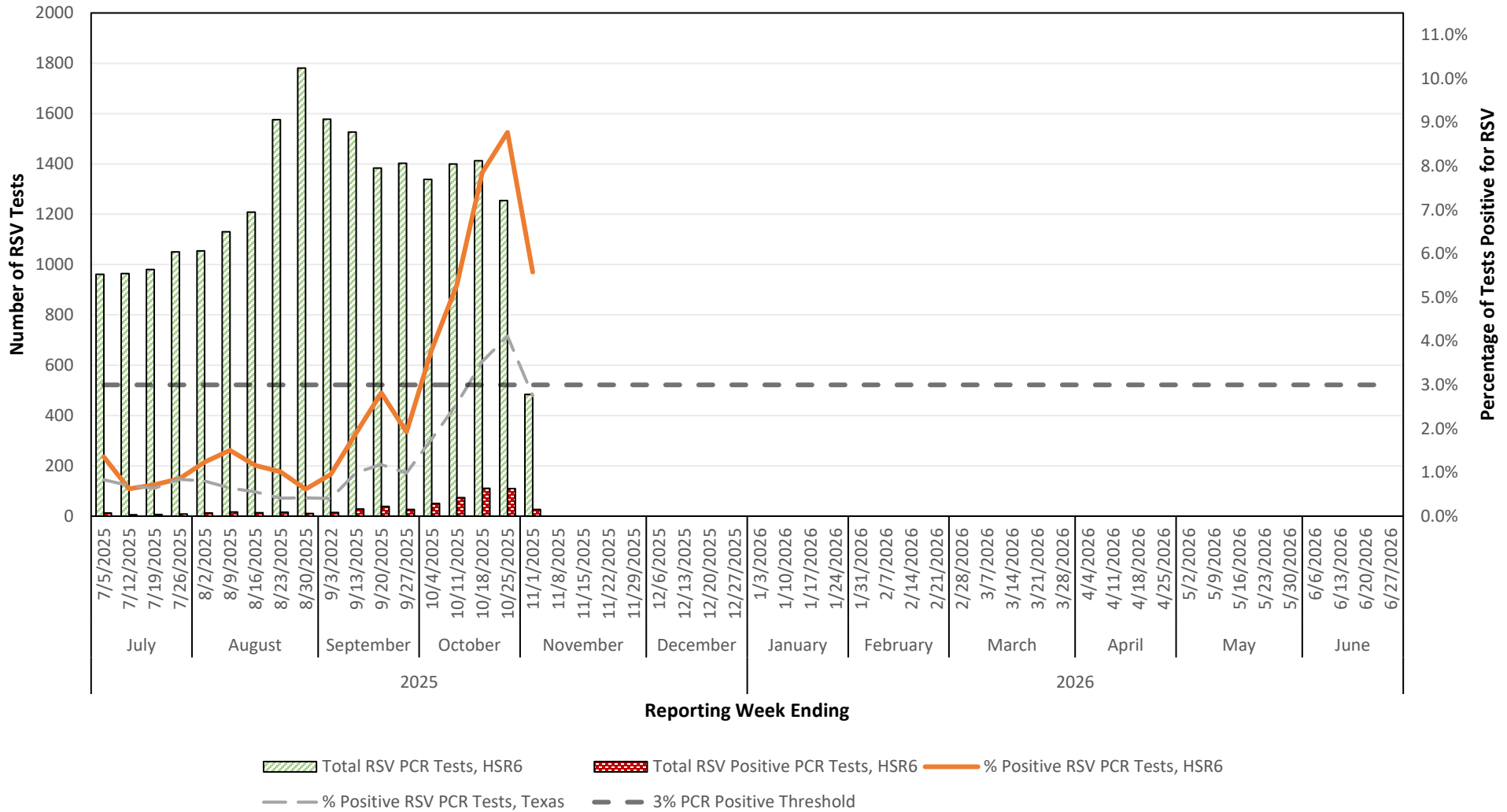
Number & Percentage of Antigen Tests Positive for Respiratory Syncytial Virus (RSV) Health Service Region 4 (Upper East Texas), 2025-2026 Season



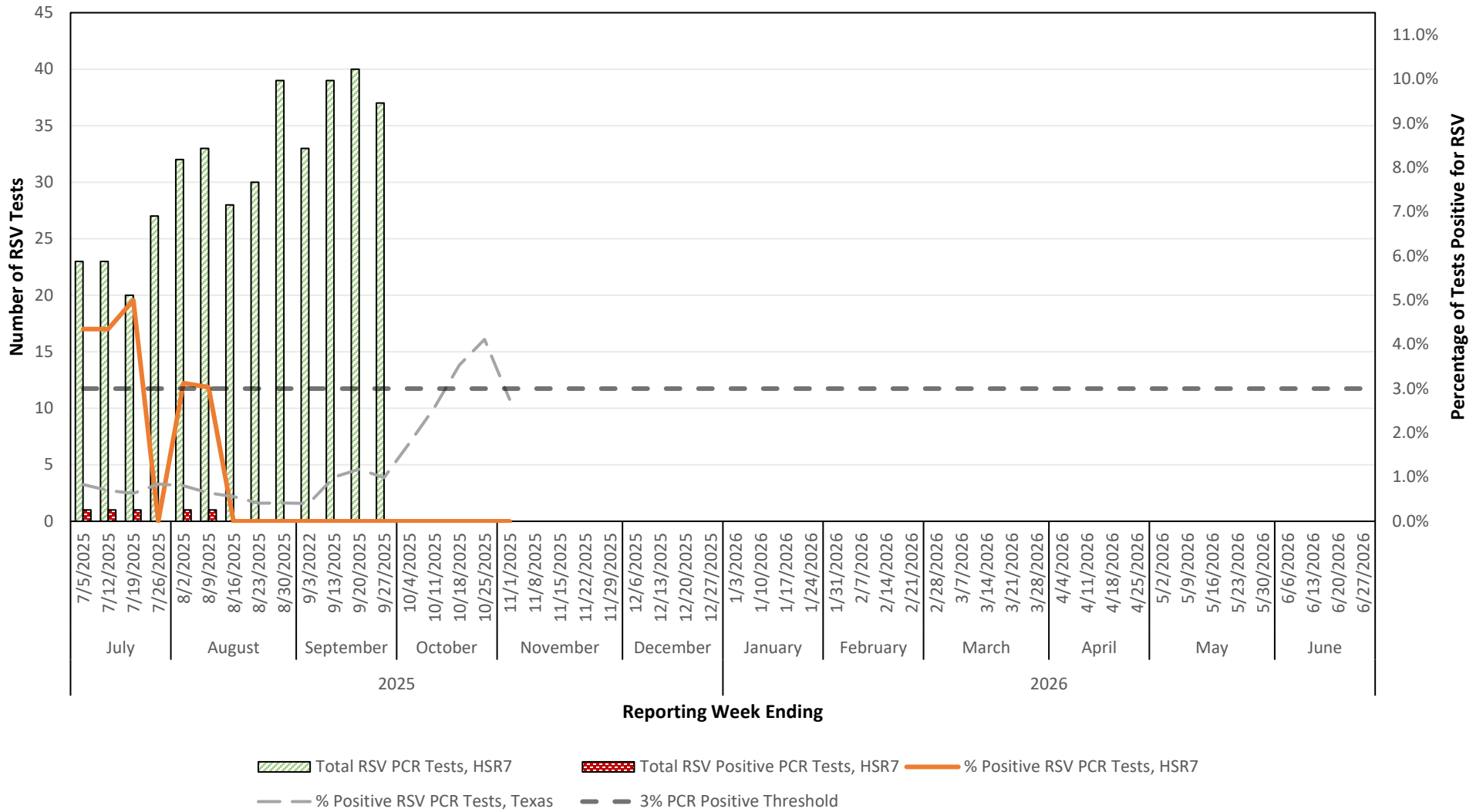
Number & Percentage of Antigen Tests Positive for Respiratory Syncytial Virus (RSV) Health Service Region 5 (Southeast), 2025-2026 Season



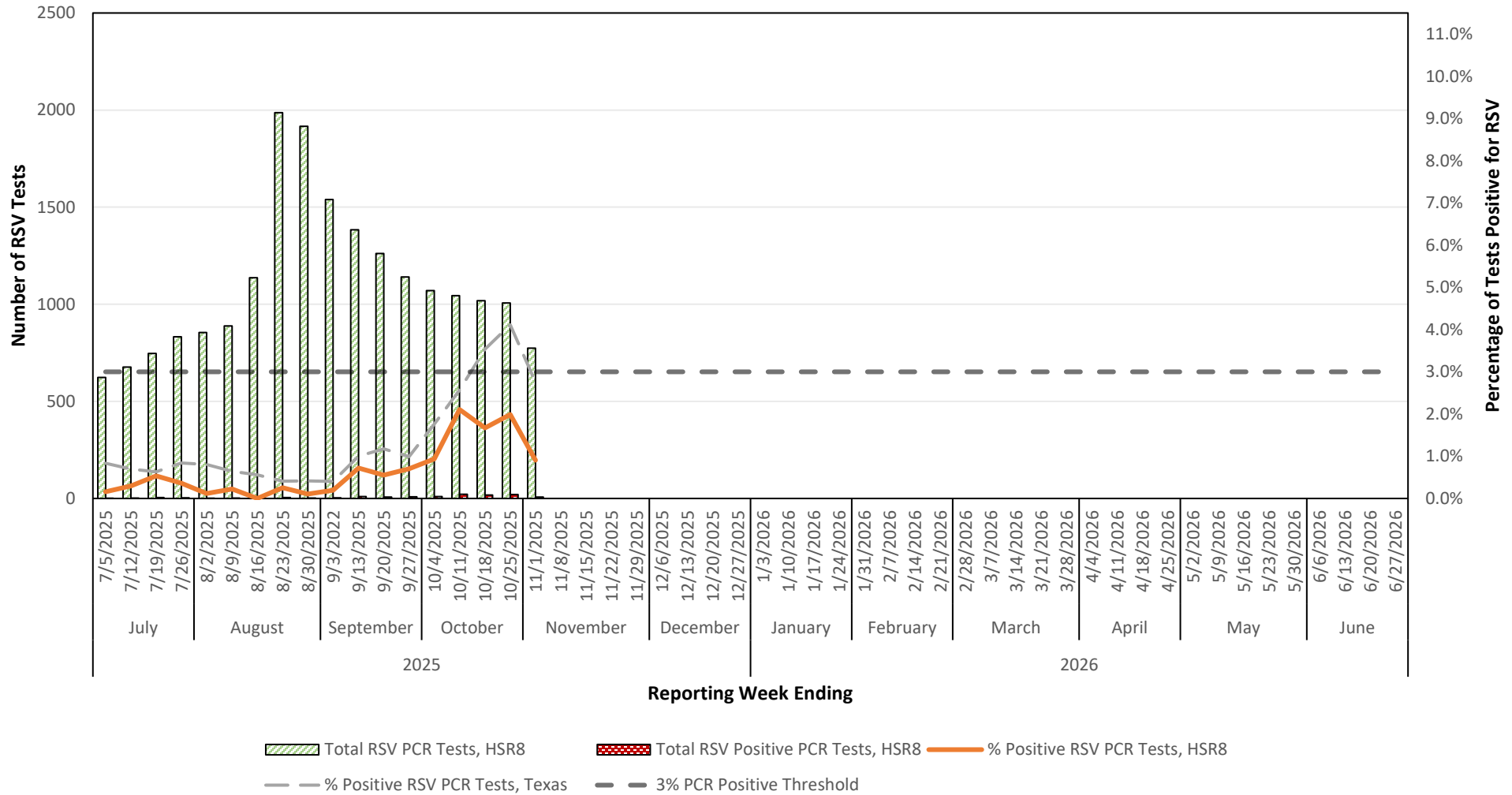
Number & Percentage of PCR Tests Positive for Respiratory Syncytial Virus (RSV) Health Service Region 6 (Gulf Coast/Houston), 2025-2026 Season



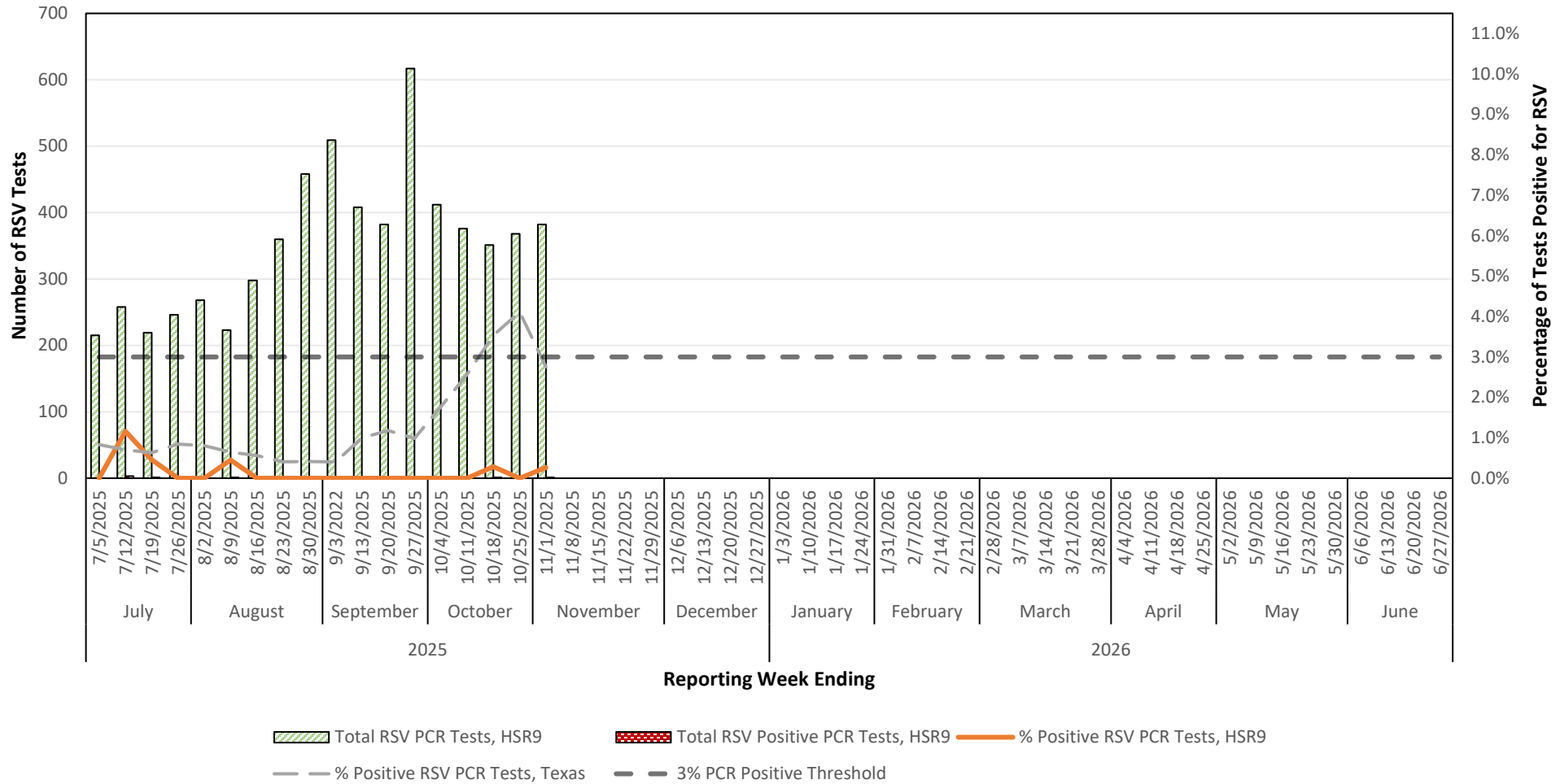
Number & Percentage of PCR Tests Positive for Respiratory Syncytial Virus (RSV) Health Service Region 7 (Central Texas), 2025-2026 Season



Number & Percentage of PCR Tests Positive for Respiratory Syncytial Virus (RSV) Health Service Region 8 (Upper South Texas), 2025-2026 Season



Number & Percentage of PCR Tests Positive for Respiratory Syncytial Virus (RSV) Health Service Region 9 (West Texas/Midland/Odessa), 2025-2026 Season



Number & Percentage of PCR Tests Positive for Respiratory Syncytial Virus (RSV) Health Service Region 11 (Lower South Texas), 2025-2026 Season

