

Texas Respiratory Virus Surveillance Report

2024-2025 Season 2025 MMWR Week 24

(June 8, 2025 – June 14, 2025)
Report produced on June 20, 2025

Table of Contents

Influenza Surveillance.....	2
Summary.....	2
Laboratory Results	2
U.S. Outpatient Influenza-like Illness Surveillance Network (ILINet)	4
Regional Activity Reports.....	6
Variant Flu and Respiratory Outbreaks.....	6
Pneumonia and Influenza (P&I) Mortality Surveillance Data	6
Influenza-Associated Pediatric Mortality	7
Statewide Influenza Activity Map	8
 RSV Surveillance.....	 9
Other Respiratory Viruses	11
 COVID-19 Surveillance.....	 12
Summary.....	12
<i>New and Total Cases</i>	12
Weekly Case Map	13
Laboratory Results	14
COVID-19 Mortality	15
COVID-19 Sequencing and Variant Surveillance.....	18
 Surveillance Components and Measures	 19
 Appendix.....	 22

Influenza Surveillance

Summary

Compared to the previous week, the percentage of specimens testing positive for influenza reported by hospital laboratories has decreased. The percentage of patient visits due to influenza-like illness (ILI) has decreased. There were no influenza-associated pediatric deaths reported, and no influenza-associated outbreaks reported in Week 24.

Table 1: Summary of Texas Influenza (Flu) and Influenza-like Illness (ILI) Activity for the Current Week

Texas Surveillance Component	Change from Previous Week	Current Week	Previous Week [†]	Page of Report
Statewide ILINet Activity Indicator assigned by CDC (intensity of influenza-like illness)	No Change	Minimal	Minimal	-
Percentage of specimens positive for influenza by hospital laboratories	▼ 1.34%	0.56%	1.90%	2
Percentage of visits due to ILI (ILINet)	▼ 0.15%	2.12%	2.27%	4
Number of regions reporting increased flu/ILI activity	No Change	0	0	6
Number of regions reporting decreased flu/ILI activity	▲ 2	4	2	6
Number of variant/novel influenza infections	No Change	0	0	7
Number of ILI/influenza outbreaks	No Change	0	0	7
Number of pediatric influenza deaths	▼ 1	0	1	8

[†]Data displayed have been updated since last week's flu report with any new reports received.

Laboratory Results

Influenza

Hospital laboratories across Texas voluntarily report influenza tests (antigen, culture, and PCR) to the National Respiratory and Enteric Virus Surveillance System (NREVSS). Providers throughout Texas also submit specimens for influenza testing (PCR) to Texas public health laboratories, including the Texas Department of State Health Services (DSHS) state laboratory in Austin and the nine Texas Laboratory Response Network (LRN) laboratories. The results reported by Texas NREVSS participants and public health laboratories for the current week are summarized in the two tables below (Tables 2 and 3). Additional influenza test results (rapid tests, culture, PCR) and ILI activity were reported from providers and public health departments throughout the state (see county map at the end of this report).

Table 2: Influenza Testing Performed by Texas Hospital Laboratories for the Current Week

	Week 24	Season to Date Week Ending June 14, 2025
Number of labs reporting flu tests	12	
Number of specimens tested	1,801	195,442
Number positive specimens (%)	10 (0.56%)	31,251 (15.99%)
Percentage of total tests that were antigen detection tests	1.61%	
Positive specimens by type/subtype [n(%)]		
Influenza A	1 (10.00%)	29,384 (94.03%)
Subtyping performed	1 (100.00%)	6,753 (22.98%)
A (H1N1)	1 (100.00%)	2,294 (33.97%)
A (H3N2)	0 (0.00%)	4,459 (66.03%)
Subtyping not performed	0 (0.00%)	22,631 (77.02%)
Influenza B	9 (90.00%)	1,867 (5.97%)

Figure 1: Number and Percentage of Tests (Antigen, Culture, PCR) Positive for Influenza by Type and Subtype Reported by Texas Hospital Laboratories, 2024-2025 Season

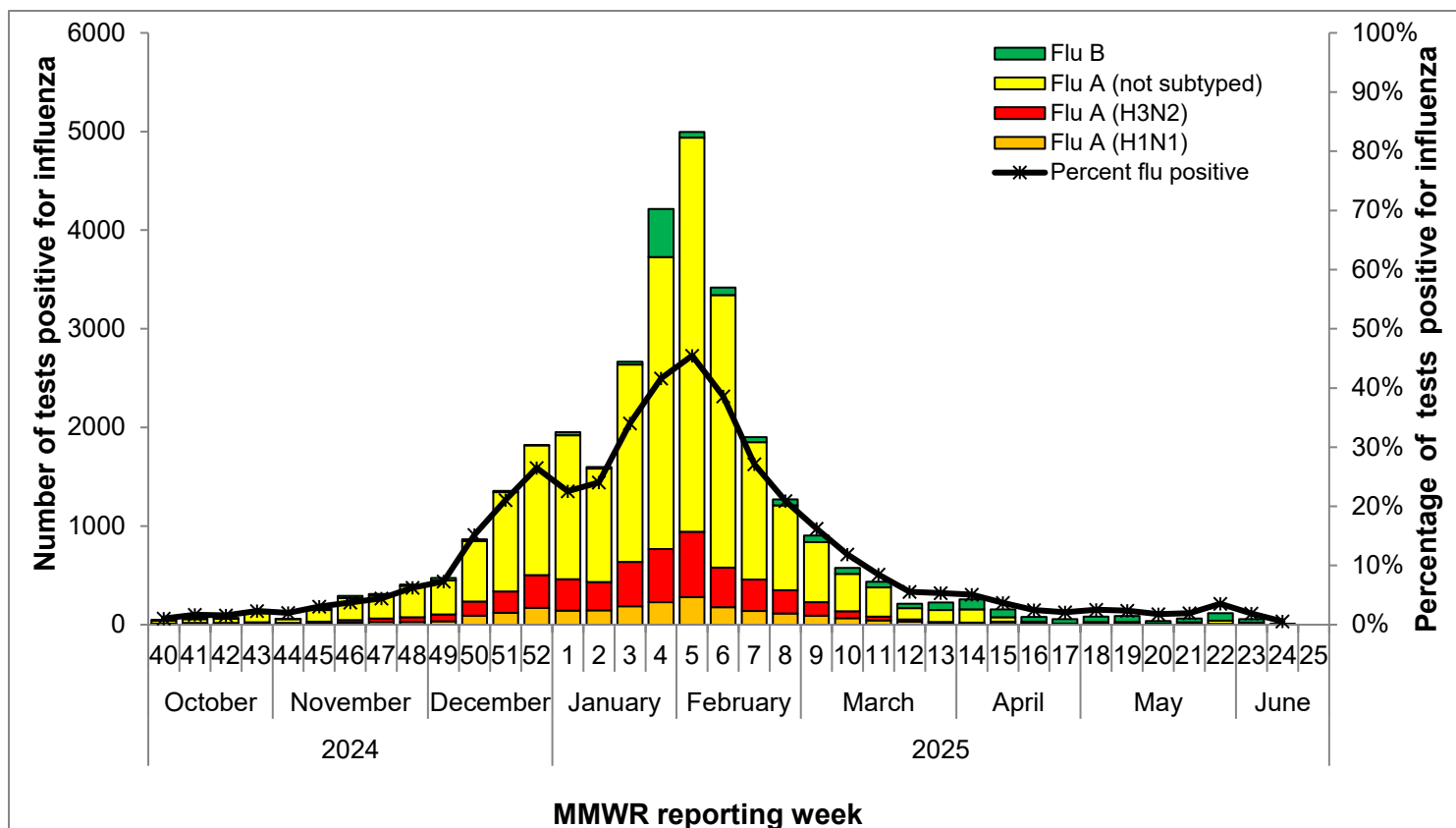
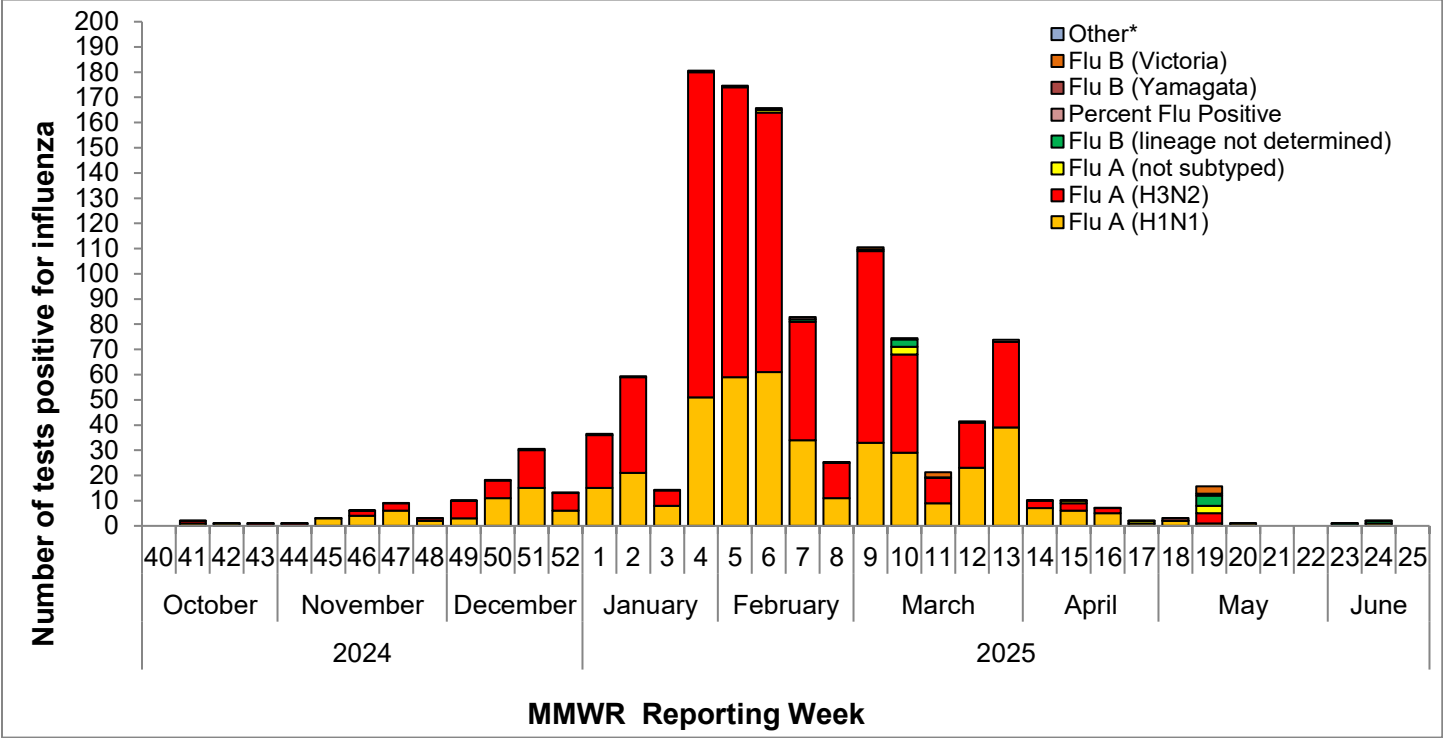


Table 3: Influenza Testing Performed by Texas Public Health Laboratories for the Current Week

	Week 24	Season to Date Week Ending: June 14, 2025
Number of labs reporting flu tests	7	
Number of specimens tested	33	2,892
Number of positive specimens (%)	2 (6.06%)	1,202 (41.56%)
Positive specimens by type/subtype/lineage [n (%)]		
Influenza A	1 (50.00%)	1,185 (98.59%)
Subtyping performed	1 (100.00%)	1,176 (99.24%)
A (H1N1)	1 (100.00%)	469 (39.88%)
A (H3N2)	0 (0.00%)	707 (60.12%)
Subtyping not performed	0 (0.00%)	9 (0.76%)
Influenza B	1 (50.00%)	17 (1.41%)
Lineage testing performed	0 (0.00%)	7 (41.18%)
B/Victoria	0 (0.00%)	7 (100.00%)
B/Yamagata	0 (0.00%)	0 (0.00%)
Lineage testing not performed	1 (100.00%)	10 (58.82%)
Other*	0 (0.00%)	0 (0.00%)

*Other denotes specimens with coinfections (i.e. one specimen was positive for both influenza A (H1N1) and influenza A (H3N2))

Figure 2: Number of Tests (PCR) Positive for Influenza by Type, Subtype, and Lineage Reported by Texas Public Health Laboratories, 2024-2025 Season



Subtype Final/Antigenic Characterization

Since September 29, 2024, CDC has reported subtype final/antigenic characterization results from thirty-five influenza A (H1N1), thirty-five influenza A (H3N2), and six Influenza B virus received from the Texas Department of State Health Services (DSHS) Laboratory and the City of Houston Department of Health. The DSHS Laboratory and participating LRN Laboratories send a representative sample of influenza viruses to the CDC throughout the flu season.

Antiviral Resistance

No antiviral resistance testing data for Texas specimens is available presently.

U.S. Outpatient Influenza-like Illness Surveillance Network (ILINet)

Table 4: Texas ILINet Reporting and Patient Visit Summary for the Current Week

Week 24	
Number of providers reporting	43
Number of providers reporting patient visits	43
Number (%) of providers with at least one ILI case	31 (72.1%)
Percentage of all visits due to ILI	2.12%
Texas ILINet baseline [‡] , 2024-2025	4.40%

[‡]The baseline is the mean percentage of patient visits for ILI during non-influenza weeks for the previous three seasons plus two standard deviations. A “non-influenza week” is defined as a week that accounted for less than 2% of the season’s total number of specimens that tested positive for influenza.
Special Note: The case definition was changed to capture respiratory pathogens causing illness, including CoVID-19, through the ILINet. The Influenza-like Illness (ILI) case definition is a patient with fever ($\geq 100^{\circ}\text{F}$, 37.8°C) AND cough and/or sore throat.

Table 5: Percentage of Visits for Influenza-like Illness Reported by Texas ILINet Providers (as of 06/19/2025 9:55 AM)

Week	Providers Reporting	Number of ILI Cases by Age Group (Years)					Total ILI (all ages)	Total Patients	% ILI
		0-4	5-24	25-49	50-64	65+			
202440	50	364	689	345	98	68	1564	53241	2.94%
202441	50	433	634	324	123	49	1563	52830	2.96%
202442	50	423	562	332	112	49	1478	56519	2.62%
202443	50	351	657	312	111	61	1492	52656	2.83%
202444	50	427	703	322	117	54	1623	51880	3.13%
202445	49	547	716	280	92	63	1698	51742	3.28%
202446	50	651	766	355	181	81	2034	52431	3.88%
202447	50	642	845	463	151	93	2194	52229	4.20%
202448	49	617	494	318	109	75	1613	40295	4.00%
202449	49	514	705	528	206	143	2096	52098	4.02%
202450	50	577	866	459	190	139	2231	50277	4.44%
202451	48	708	960	572	166	158	2564	48475	5.29%
202452	47	880	873	759	284	242	3038	42938	7.08%
202501	48	526	573	741	324	261	2425	34954	6.94%
202502	48	497	923	706	336	225	2687	45339	5.93%
202503	48	550	1161	852	327	196	3086	52294	5.90%
202504	49	623	1557	1014	362	201	3757	47313	7.94%
202505	50	854	2799	1405	597	409	6064	58223	10.42%
202506	50	755	2193	1256	509	347	5060	57906	8.74%
202507	49	469	1079	781	300	230	2859	48217	5.93%
202508	49	527	1129	721	352	197	2926	48255	6.06%
202509	48	601	1242	777	358	189	3167	57269	5.53%
202510	49	455	955	593	268	123	2394	49653	4.82%
202511	47	424	626	506	234	133	1923	44312	4.34%
202512	48	422	642	466	199	131	1860	49449	3.76%
202513	49	367	637	396	187	97	1684	50873	3.31%
202514	49	393	616	373	151	96	1629	51004	3.19%
202515	48	378	617	386	159	86	1626	49653	3.27%
202516	47	346	488	277	81	74	1266	43907	2.88%
202517	46	396	547	350	158	87	1538	45309	3.39%
202518	48	377	612	341	118	82	1530	49489	3.09%
202519	48	412	559	340	150	124	1585	48240	3.29%
202520	47	402	608	353	132	74	1569	48587	3.23%
202521	46	361	484	323	127	85	1380	47515	2.90%
202522	47	339	340	289	137	89	1194	43212	2.76%
202523	47	279	288	284	115	67	1033	45502	2.27%
202524	43	232	200	221	127	43	823	38891	2.12%

Note: ILI percentages are not static from week to week. ILI percentages can change based on when the providers enter the ILI patient visits as providers can enter patient visits after the initial report week.

Figure 3: Percentage of Visits Due to Influenza-like Illness Reported by Texas ILINet Participants, 2024-2025 Season

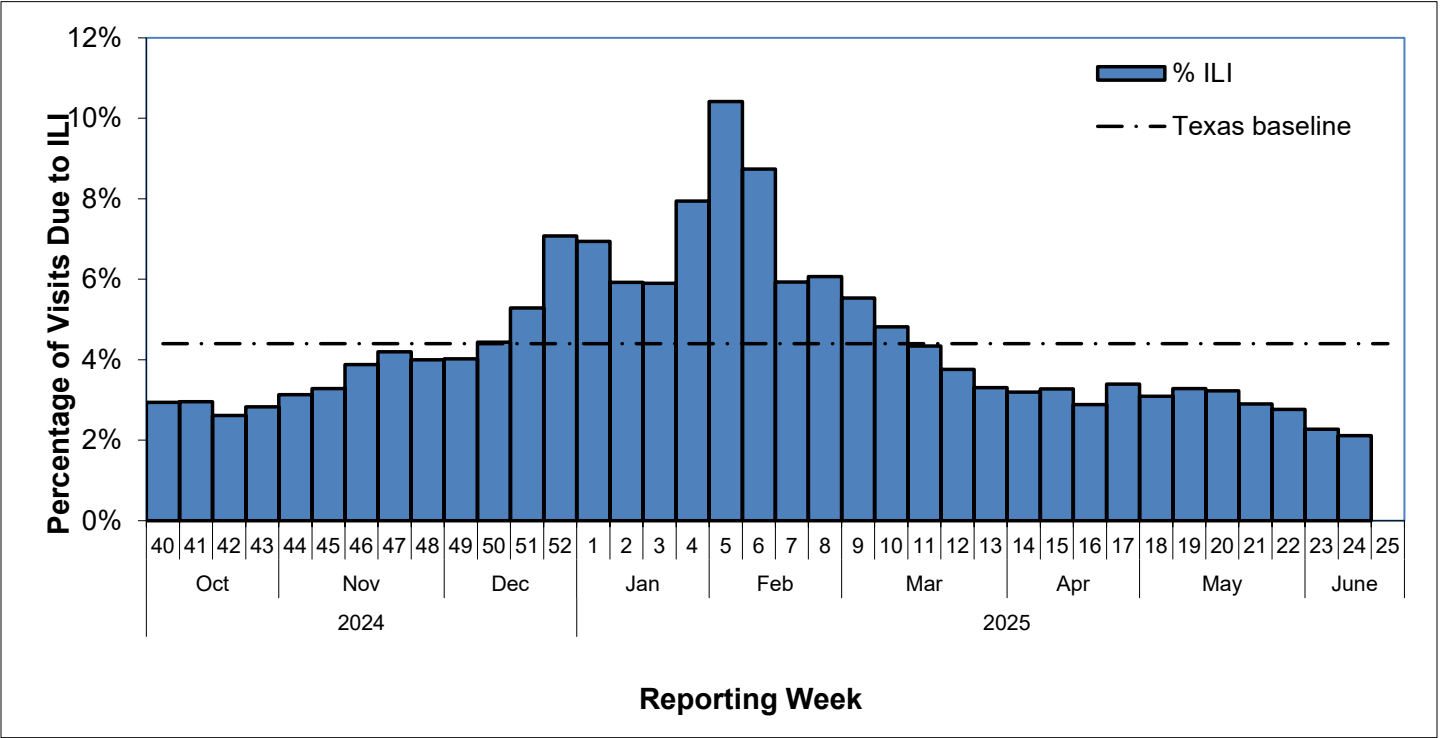
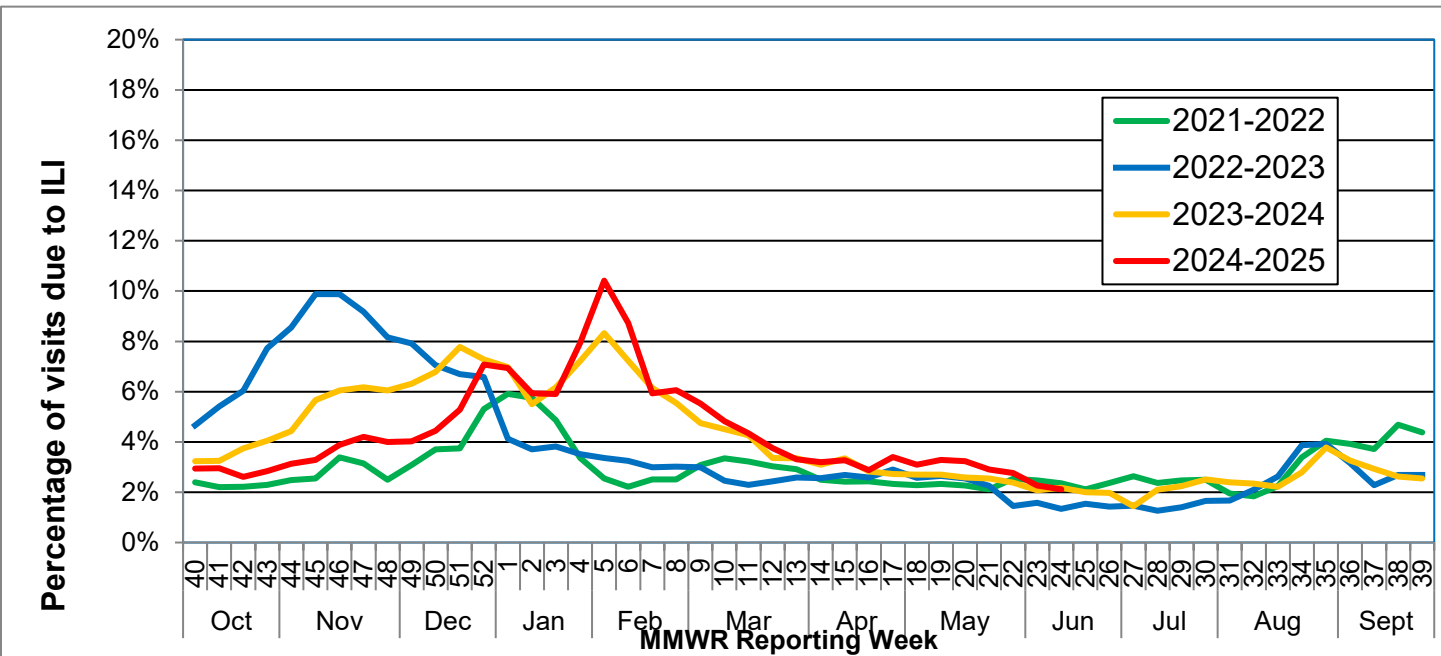


Figure 4: Percentage of Visits Due to Influenza-like Illness Reported by Texas ILINet Participants, 2021–2025 Seasons



Note: The 2020-2021 Flu Season contains MMWR week 202053. For graphical display compatibility with seasons containing 52 weeks, average values were generated using MMWR week 52 and 1.

Reports from Public Health Regions

Reports were received from Public Health Regions (PHRs) during Week 24.

Table 6: Influenza Activity compared to week 19 by Public Health Regions (PHRs).

Influenza Activity Comparison	
Increased	
Same	1, 7, 4/5N, 9/10
Decreased	2/3, 6/5S, 8, 11
Unsure	

Variant Influenza Viruses

No novel/variant influenza viruses have been detected in Texas during the 2024-2025 season.

Institutional Outbreaks and School Closures

No respiratory disease outbreaks were reported in Week 24.

P&I Mortality Surveillance Data

***Deaths due to COVID-19 may be classified as pneumonia deaths or influenza deaths (deaths due to “flu” or “flu-like illnesses”) in the absence of positive SARS-CoV-2 test results.** Pneumonia and influenza (P&I) death data are obtained from death certificates of Texas residents whose underlying or contributing cause(s) of death is reported as pneumonia or influenza. P&I deaths are identified based on ICD-10 multiple cause of death codes for pneumonia and influenza related mortality.

Eight thousand three hundred and ninety-eight (8398) P&I deaths have been reported in Texas during the 2024-2025 influenza season.

Table 7: Texas P&I Deaths Occurring September 29, 2024– June 14, 2025* by Age.

Age Category (years)	Number of P&I Deaths ⁺	Mortality Rate (per 100,000)
0 - 4	30	1.32
5 - 17	32	0.57
18 - 49	625	4.40
50 - 64	1368	25.69
65 +	6343	133.39
Overall	8398	26.08

*NOTE: Data are provisional and subject to change, errors, and duplicates

+ If the cell count is less than 10, the number of P&I deaths is suppressed and <10 is written in the cell.

Table 8: Texas P&I Deaths Occurring September 29, 2024– June 14, 2025* by Public Health Region (PHR).

PHR	Number of P&I Deaths ⁺	Mortality Rate (per 100,000)
1	308	32.97
2/3	2340	24.89
4/5N	688	44.01
6/5S	2018	22.99
7	990	25.07
8	919	26.88
9/10	386	22.05
11	748	31.06
Unknown	1	.
Overall	8398	26.08

*NOTE: Data are provisional and subject to change, errors, and duplicates

+ If the cell count is less than 10, the number of P&I deaths is suppressed and <10 is written in the cell.

Influenza-Associated Pediatric Mortality

No influenza-associated pediatric mortalities were reported in Week 24.

Sixteen influenza-associated pediatric mortalities have been reported in Texas during the 2024-2025 influenza season. Cases of influenza-associated pediatric mortality (children <18 years of age) are reportable year-round by law in Texas.

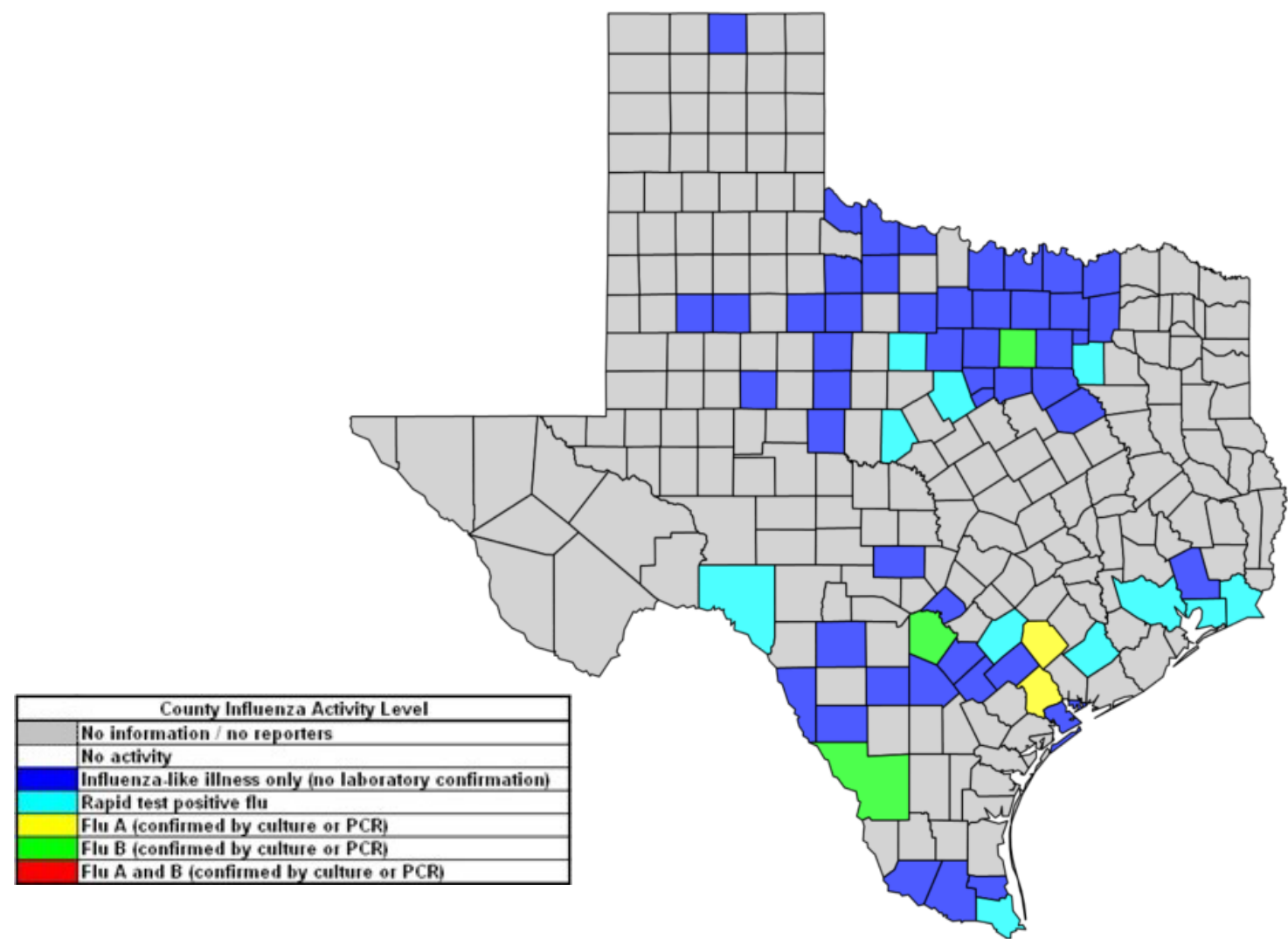
Table 9: Influenza-Associated Pediatric Deaths Reported in Texas during the 2024-2025 Season

Month of Pediatric Death	Influenza A (H1N1)	Influenza A (H3N2)	Influenza A (Not Subtyped)	Influenza B	Influenza, Not Typed / Not Differentiated	Influenza virus co-infection: A (not subtyped) and B	Total, All Influenza Types / Subtypes
2024							
October	0	0	0	0	0	0	0
November	0	0	0	0	0	0	0
December	2	3	0	0	0	0	5
2025							
January	1	3	1	0	0	0	5
February	0	1	0	1	0	0	2
March	2	1	0	1	0	0	4
April	0	0	0	0	0	0	0
May	0	0	0	0	0	0	0
Total*	5	8	1	2	0	0	16

*Total count of typed cases may be adjusted as lab testing and case investigation are completed; this does not alter total count of all cases (final column).

Statewide Influenza Activity Map

Figure 5: Texas Map Displaying the Highest Level of Influenza or ILI Activity Reported by County for the Week Ending June 14, 2025 (MMWR Week 24)



Please note: The majority of influenza cases are not reportable by law in Texas. This map contains data from sentinel sites and only displays influenza and ILI cases that were reported to public health. Positive laboratory results are reported according to specimen collection date, or date received in the laboratory if the former is unknown.

Respiratory Syncytial Virus (RSV) Surveillance

Respiratory Syncytial Virus (RSV) surveillance in Texas utilizes passive surveillance and is based on data submitted by providers and facilities to the National Respiratory and Enteric Virus Surveillance System (NREVSS). Data is reported in aggregate and is utilized by DSHS to produce the weekly surveillance graphs statewide and by health service regions. Some providers report RSV data directly to DSHS. As such, the weekly surveillance graphs may differ from NREVSS data. For a review of available RSV data by region, please see the addendum found at the end of this report.

Figure 6: Number and Percent of Antigen Tests Positive for Respiratory Syncytial Virus in the State of Texas, 2024-2025 Season

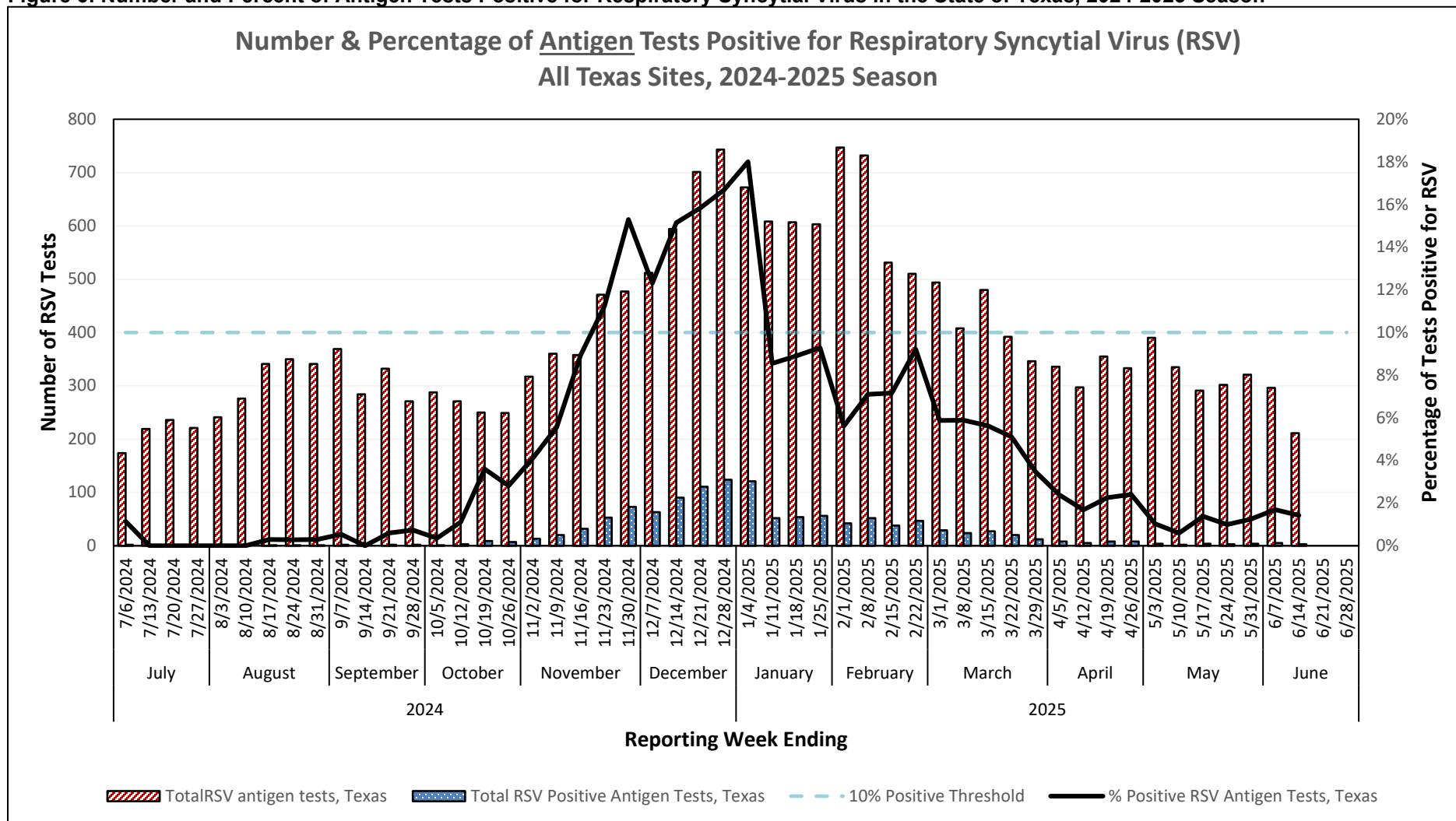
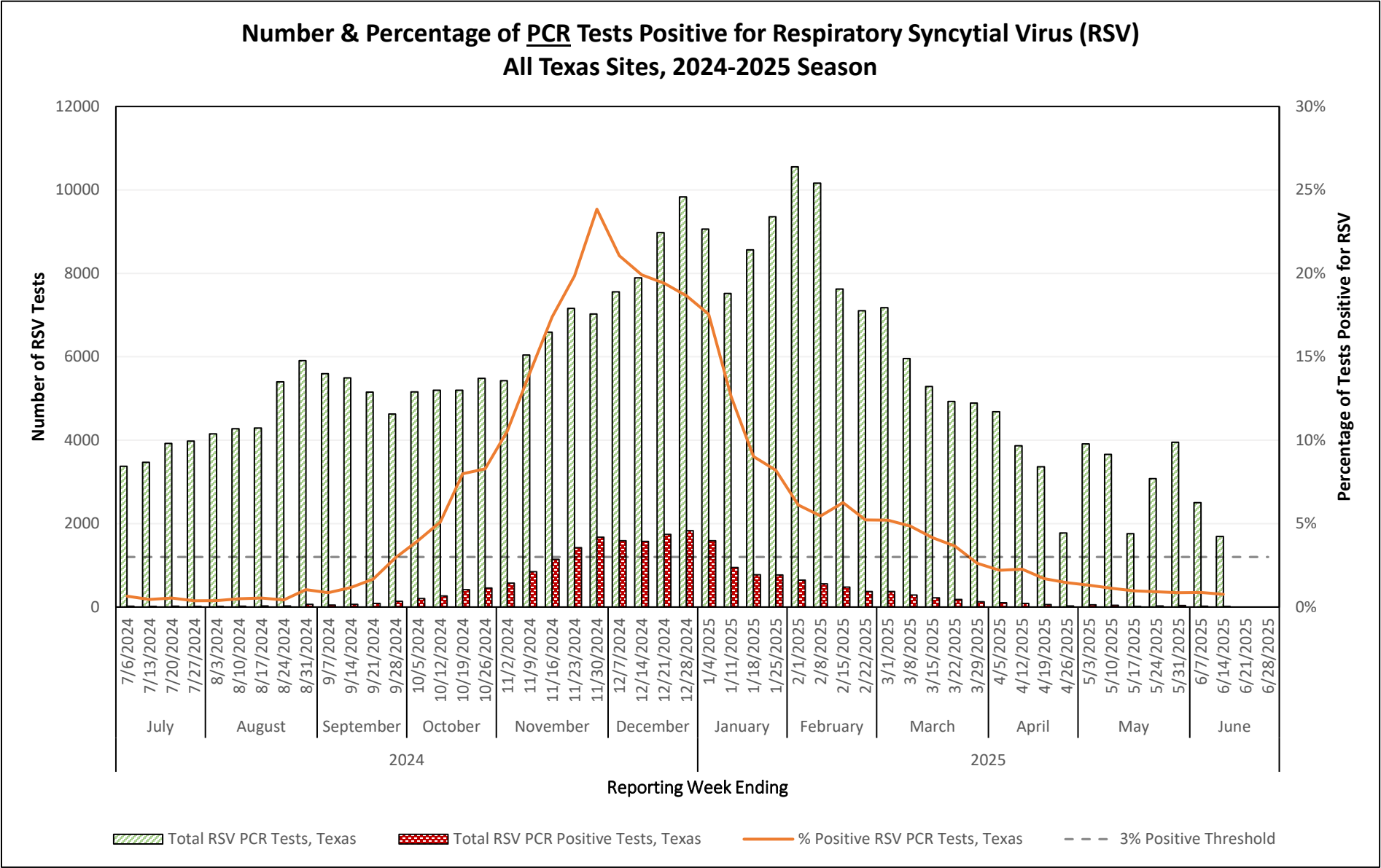


Figure 7: Number and Percent of PCR Tests Positive for Respiratory Syncytial Virus in the State of Texas, 2024-2025 Season



Other Respiratory Viruses

The NREVSS system collects information on a variety of respiratory viruses in addition to influenza including parainfluenza virus, respiratory syncytial virus (RSV), rhinovirus, human metapneumovirus (HMPV), seasonal coronavirus, and respiratory adenovirus. The results for the current week are summarized below.

Table 10: Non-Influenza Respiratory Virus Testing Performed by Texas NREVSS Laboratories for the Current Week

Virus	Number of Laboratories Testing	Tests Performed	Positive Tests	Percentage of Tests Positive
Adenovirus (respiratory)	11	1267	37	2.92%
HMPV	11	1267	67	5.29%
Parainfluenza virus	11	1267	103	8.13%
Rhino/enterovirus	11	1269	266	20.96%
RSV ^{†^}	12	1693	13	0.77%
Seasonal coronavirus (does not include MERS-CoV or COVID-19)	9	1165	10	0.86%

[†] RSV tests displayed in the table are a combination of antigen detection, PCR, and culture tests. Some non-NREVSS reporters also contribute to the RSV data.

[^] Numbers and percentage may differ from the weekly RSV report. The weekly RSV report may be accessed at <https://www.dshs.state.tx.us/RSV/disease/rsv-Data.aspx>.

COVID-19 Surveillance

Note: As of March 8, 2024, individual confirmed, and probable COVID-19 cases are no longer required to be reported to the Texas Department of State Health Services. Thus, as of March 8, 2024, COVID-19 case counts and associated rates represent COVID-19 cases which were reported to DSHS on a voluntary basis rather than a mandatory basis.

Summary

The Texas Department of State Health Services (DSHS) is working closely with the Centers for Disease Control and Prevention (CDC) in monitoring Coronavirus Disease 2019 (COVID-19). Multiple sources of data are being used to monitor the situation in Texas.

Between March 6, 2020, and the current report week, **9,372,646 confirmed and probable cases of COVID-19** were reported in Texas. So far for 2025, **44,204 confirmed and probable cases of COVID-19** were reported in Texas.

Table 11: Summary of COVID-19 Cases, COVID-19-Associated Fatalities, and Hospitalizations for the Current Reporting Week*

Texas Surveillance Component	Change from Previous Week	Current Week	Previous Week
New COVID-19 Cases (Probable and Confirmed)**	▲ 20	1,149	1,129
New COVID-19 Confirmed Cases**	▲ 11	813	802
New COVID-19 Probable Cases**	▲ 9	336	327
Total COVID-19 Cases (Probable and Confirmed)**	▲ 1,149	9,372,646	9,371,497
Total COVID-19 Confirmed Case**	▲ 813	7,116,776	7,115,963
Total COVID-19 Probable Cases**	▲ 336	2,255,870	2,255,534
Newly Reported COVID-19-Associated Fatalities	-	-	-
Hospitalized COVID-19 Cases (Day of Report)***	-	-	-
Hospitalized COVID-19 Cases (Rolling 7-Day Average)***	-	-	-

▲ = increase and ▼ = decrease

* Numbers and percentages might vary from the previous COVID-19 report due to additional data becoming available for non-finalized surveillance years. COVID-19 case data for 2020-2021 are finalized. All other data are provisional and subject to change.

** Cases for the current week include both cases reported in the last week and may include newly reported cases from prior weeks.

*** Hospitalization data are not currently available.

**** Fatality data are not currently available.

COVID-19 cases reported increased in Texas by **1.8%** in **Week 24** compared to the previous MMWR week.

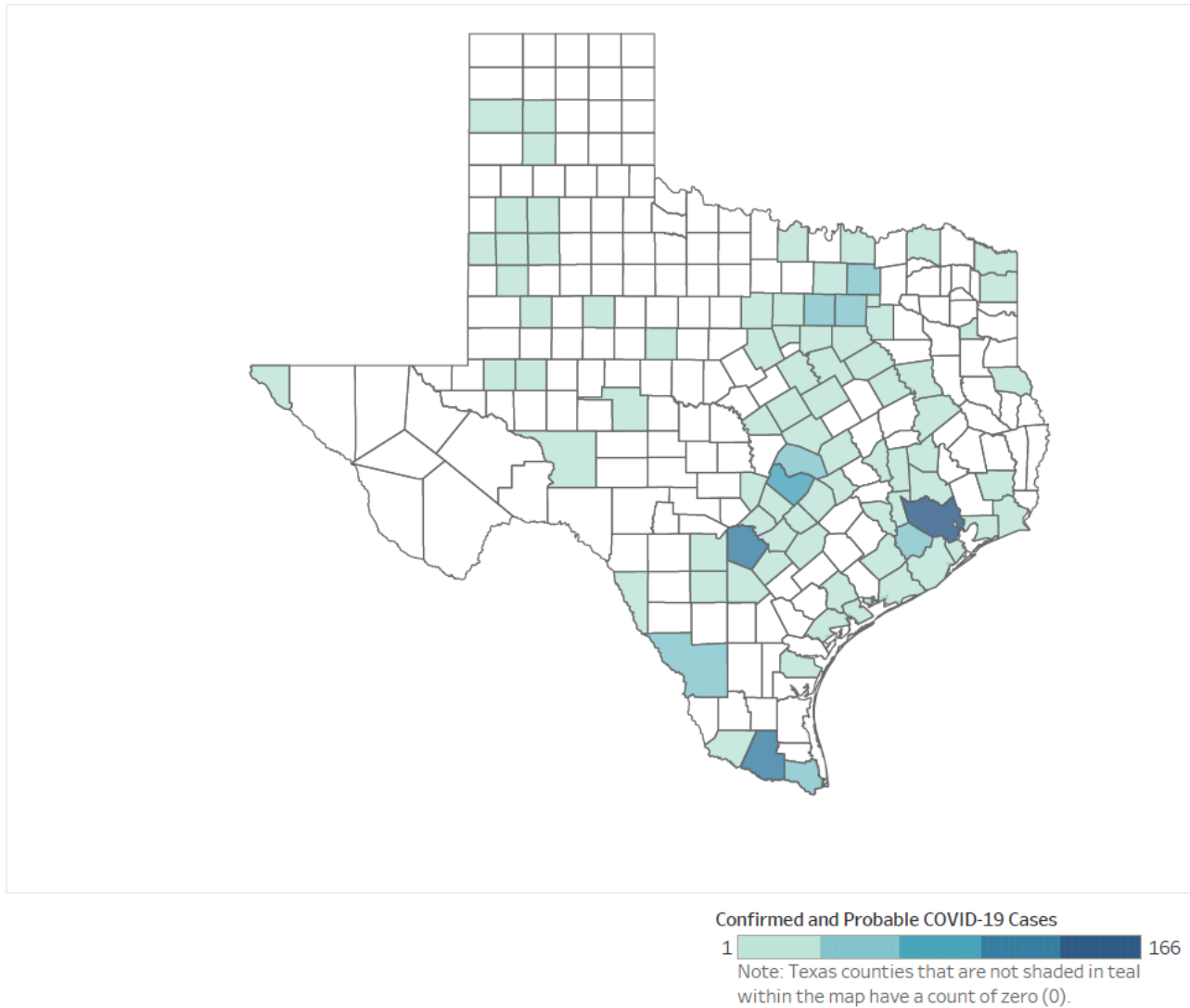
COVID-19-associated fatality data are not currently available for **Week 21**.

Note: Cumulative counts will consistently reflect all cases within the National Electronic Disease Surveillance System as of report date. Counts may include cases which were provided after initial reporting, such as backlogged cases; and reflect regular case quality assurance updates.

Weekly COVID-19 Case Map

A map of weekly confirmed and probable COVID-19 cases by county can be viewed below.

Figure 8: Texas Map Displaying COVID-19 Case Counts by County for the Current Reporting Week



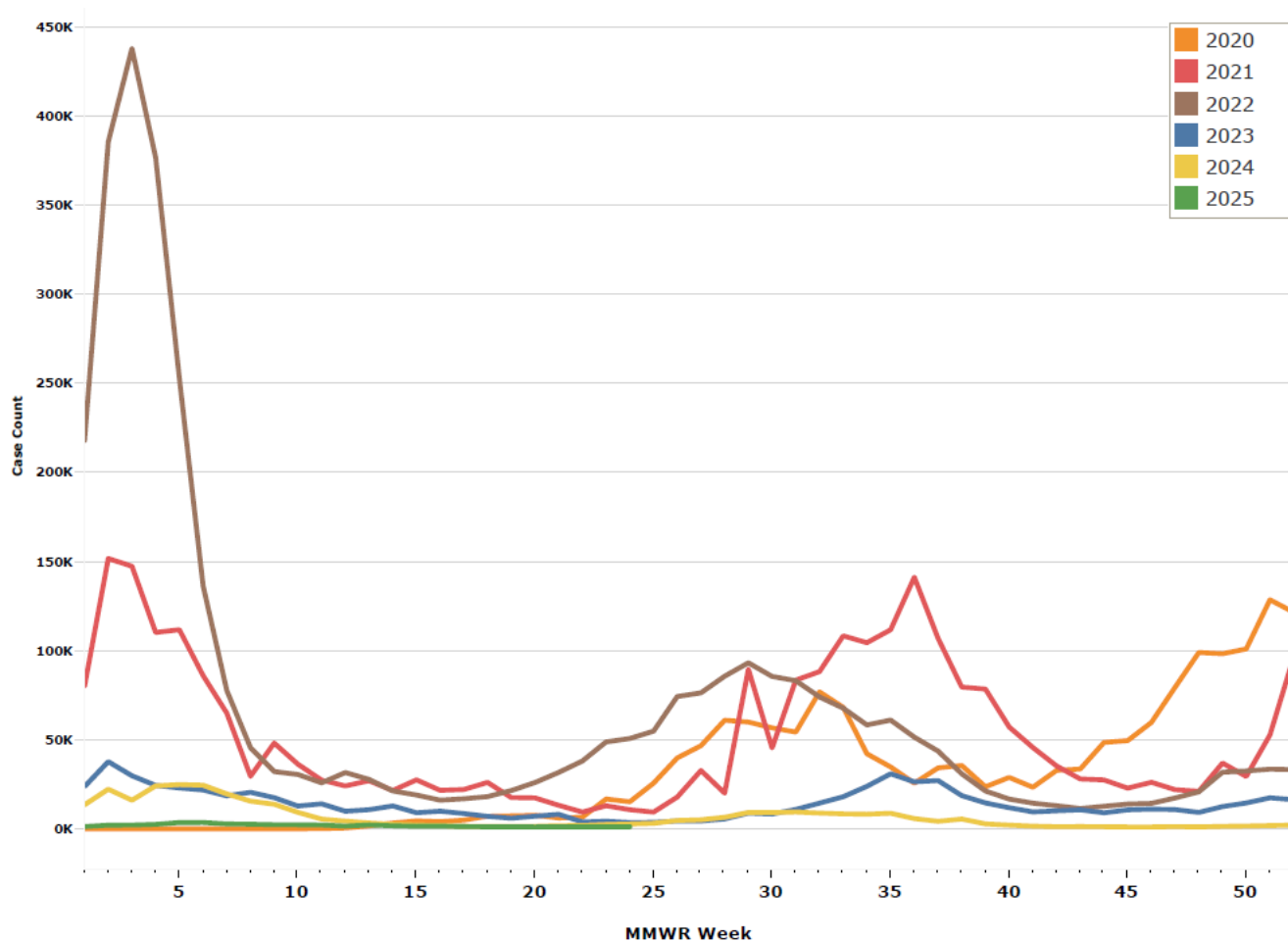
COVID-19 Case Map Notes

COVID-19 cases shown are for the MMWR week of the report. This count includes cases reported in the past week, as well as newly reported cases from prior weeks. All counts are provisional and subject to change.

The populations used are population projections from the Texas Demographic Center*. There may be COVID-19 cases with incomplete address reported to Texas DSHS which are not included in the COVID-19 Case Map by County, Figure 1.

*Refer to Appendix 4 for the link to view the population projections from Texas Demographic Center

Figure 9. Cases of COVID-19 by MMWR Week, Texas, 2020 to Current Report Week (N = 9,372,646)



Note: The COVID-19 pandemic reported the first locally acquired SARS-CoV-2 case in Texas during the MMWR Week 10 in 2020. Prior to MMWR Week 10 in 2020 there were no locally acquired cases of SARS-CoV-2 infection reported among Texas residents. Case counts are reported based on all MMWR weeks as they are provided.

Laboratory Results

Providers throughout Texas submit specimens for SARS CoV-2 testing to Texas laboratories which are reported to the National Electronic Disease Surveillance System (NEDSS).

Statewide, COVID-19 laboratory reporting decreased in **Week 24**.

Table 12: Summary of All COVID-19 PCR and Antigen Tests Reported for the Current Week Versus the Previous Week

Test Reported	Change from Previous Week	Current Week	Previous Week
PCR Tests*	▼ 50	1,457	1,507
per 100,000 population	-	4.67	4.83
Antigen Tests*	▲ 2	535	533
per 100,000 population	-	1.72	1.71

* As of June 15th, 2023, only positive tests must be reported to DSHS. Negative tests are no longer required to be reported, resulting in a decrease in the number of tests reported

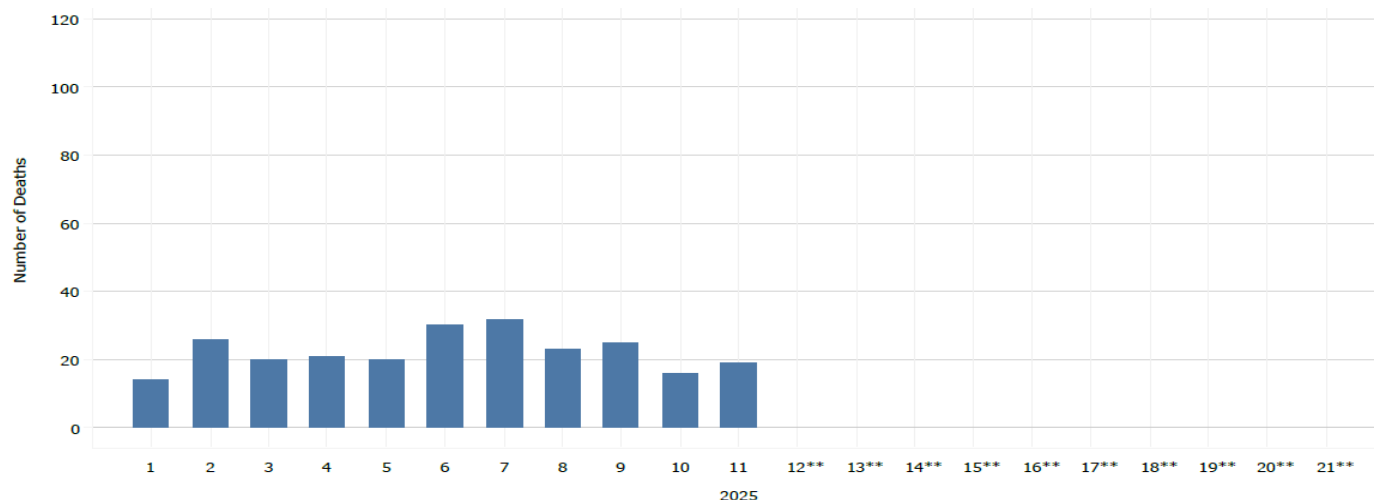
COVID-19 Mortality

COVID-19 mortality data in this report are obtained from death certificates of Texas residents whose underlying or contributing cause(s) of death is reported as COVID-19. Reporting of deaths occurs up to three weeks following date of death. Data is provisional until data close out occurs.

****COVID-19-associated deaths for MMWR Year 2025, Week 21 are currently unavailable. Information presented in this report is up to MMWR Week 11.**

The 243[†] COVID-19-associated deaths reflected in figure 10 and table 13 were reported up to MMWR Week 11 in 2025 from death certificates of Texas residents. There were **18 COVID-19-associated deaths** reported in MMWR Week 11. In total, **96,130 COVID-19-associated deaths** have been identified from death certificates of Texas residents.

Figure 10: COVID-19 Associated Deaths Identified from Vital Statistics Data by MMWR Week of Death, MMWR Year 2025 Week 21



Note: Counts shown reflect the available death certificate data. This will be updated as death certificate data becomes available. Data exclude the most recent three MMWR weeks due to lag time inherent in death registration and reporting processes. Death certificate data should be considered provisional and subject to change as additional information becomes available.

**Weekly fatality data are not available for Week 21.

Table 13: COVID-19-Associated Mortality Rate by Age for the Current Year*

Age Group	Total Number of COVID-19 Deaths (2025) [†]	Total Mortality Rate (Per 100,000) (2025) [†]	MMWR Week Total Number of COVID-19 Deaths***	MMWR Week Mortality Rate (per 100,000)****
<1 year	<10	<10	-	-
1-9 years	<10	<10	-	-
10-19 years	<10	<10	-	-
20-29 years	<10	<10	-	-
30-39 years	<10	<10	-	-
40-49 years	<10	<10	-	-
50-59 years	<10	<10	-	-
60-64 years	<10	<10	-	-
65-69 years	10	0.65	-	-
70-74 years	18	1.46	-	-
75-79 years	35	3.80	-	-
80+ years	131	12.47	-	-
Unknown	30	N/A	-	-
Overall	243	0.75	-	-

* Year 2025 Total COVID-19-associated deaths and Total mortality rates do not reflect the current week and the information in this report is up to MMWR week 11. If the cell number of deaths is less than 10, the number or percent of COVID-19 deaths is suppressed and <10 or n/a is written in the cell. The population estimates from the Texas Demographic Center are used for population rates. Data is provisional and subject to change, errors, and duplicates.

**Weekly fatality data are not available for Week 21.

*** MMWR Week Total number of COVID-19 Deaths are not currently available.

****MMWR Week Mortality Rate, (per 100,000), COVID-19 Deaths are not currently available.

[†] Refer to Texas COVID-19 Surveillance Components and Measures on page 7, Section: Mortality.

Table 14: COVID-19-Associated Mortality Rate by Race/Ethnicity for the Current Year*

Race/Ethnicity	Total Number of COVID-19 Deaths (2025) [†]	Total Mortality Rate (per 100,000) (2025) [†]	MMWR Report Week Number of COVID-19 Deaths***	MMWR Report Week Mortality Rate (per 100,000)****
White	175	1.40	-	-
Black	13	0.33	-	-
Hispanic	51	0.39	-	-
Asian	<10	<10	-	-
Other Race	<10	<10	-	-
Unknown Race/Ethnicity	<10	<10	-	-
Overall	243	0.75	-	-

* Year 2025 Total COVID-19-associated deaths and Total mortality rates do not reflect the current week and the information in this report is up to MMWR week 11. If the cell number of deaths is less than 10, the number or percent of COVID-19 deaths is suppressed and <10 or n/a is written in the cell. The population estimates from the Texas Demographic Center are used for population rates. Data is provisional and subject to change, errors, and duplicates.

**Weekly fatality data are not available for Week 21.

*** MMWR Week Total number of COVID-19 Deaths are not currently available.

****MMWR Week Mortality Rate, (per 100,000), COVID-19 Deaths are not currently available.

[†] Refer to Texas COVID-19 Surveillance Components and Measures on page 7, Section: Mortality.

Table 15: COVID-19-Associated Mortality Rate by PHR for the Current Year*

PHR	Total Number of COVID-19 Deaths (2025) [†]	Total Mortality Rate (per 100,000) (2025) [†]	MMWR Report Week Number of COVID-19 Deaths***	MMWR Report Week Mortality Rate (per 100,000)****
PHR 1	22	2.36	-	-
PHR 2/3	91	0.97	-	-
PHR 4/5N	11	0.70	-	-
PHR 6/5S	27	0.31	-	-
PHR 7	26	0.66	-	-
PHR 8	25	0.73	-	-
PHR 9/10	32	1.84	-	-
PHR 11	<10	<10	-	-
Overall	243	0.75	-	-

* Year 2025 Total COVID-19-associated deaths and Total mortality rates do not reflect the current week and the information in this report is up to MMWR week 11. If the cell number of deaths is less than 10, the number or percent of COVID-19 deaths is suppressed and <10 or n/a is written in the cell. The population estimates from the Texas Demographic Center are used for population rates. Data is provisional and subject to change, errors, and duplicates.

**Weekly fatality data are not available for Week 21.

*** MMWR Week Total number of COVID-19 Deaths are not currently available.

****MMWR Week Mortality Rate, (per 100,000), COVID-19 Deaths are not currently available.

[†] Refer to Texas COVID-19 Surveillance Components and Measures on page 7, Section: Mortality.

Table 16: COVID-19-Associated Mortality Rate by Sex for the Current Year*

Sex	Total number of COVID-19 Deaths (2025) [†]	Total Mortality Rate (per 100,000) (2025) [†]	MMWR Report Week Number of COVID-19 Deaths***	MMWR Report Week Mortality Rate (per 100,000)****
Female	119	0.73	-	-
Male	124	0.77	-	-
Overall	243	0.75	-	-

* Year 2025 Total COVID-19-associated deaths and Total mortality rates do not reflect the current week and the information in this report is up to MMWR week 11. If the cell number of deaths is less than 10, the number or percent of COVID-19 deaths is suppressed and <10 or n/a is written in the cell. The population estimates from the Texas Demographic Center are used for population rates. Data is provisional and subject to change, errors, and duplicates.

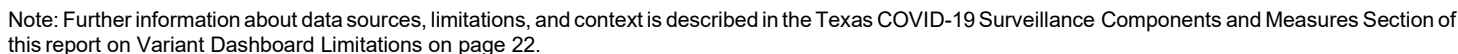
**Weekly fatality data are not available for Week 21.

*** MMWR Week Total number of COVID-19 Deaths are not currently available.

****MMWR Week Mortality Rate, (per 100,000), COVID-19 Deaths are not currently available.

[†] Refer to Texas COVID-19 Surveillance Components and Measures on page 7, Section: Mortality.

An interactive version of the DSHS COVID-19 variant dashboard can be viewed at:
<https://www.dshs.texas.gov/covid-19-coronavirus-disease/sars-cov-2-variants-and-genomic-surveillance-texas>



Surveillance Components and Measures

Texas Influenza Surveillance Components and Measures

Activity codes (see <http://www.cdc.gov/flu/weekly/overview.htm>)

Statewide influenza activity level

A code reported weekly by states and territories to CDC indicating the geographic spread of influenza in the state. Levels are no activity, sporadic, local, regional, and widespread.

ILINet Activity Indicator

A statewide level of influenza-like illness intensity (on a scale of 1-10, with 1 being the lowest level) assigned to each state weekly by CDC based on data reported through ILINet.

Morbidity

Novel/variant influenza

Thorough investigations are performed on all cases of novel/variant influenza. *This condition is reportable by law in Texas.*

Texas ILINet

Providers voluntarily report weekly to CDC's ILINet system on the number of outpatient visits for ILI and total outpatient visits. Providers may submit up to 5 specimens per month for influenza testing. **See <http://www.dshs.state.tx.us/idcu/disease/influenza/surveillance/ILINet/> for information on how to become an ILINet provider.**

ILI activity

Non-ILINet providers report ILI or influenza data weekly to local or regional health departments.

Outbreaks

Healthcare, schools, childcare, and correctional facilities report ILI and influenza outbreaks to health departments in Texas. *This condition is reportable by law in Texas.*

Mortality

Pneumonia and Influenza (P&I) Mortality Surveillance

The DSHS Vital Statistics Unit collects death certificate information for all deaths on Texas residents from various partners such as funeral homes and local registrars around the state. The death certificates are then sent to the National Center for Health Statistics (NCHS) where the cause of death and underlying causes of death on the death certificates are coded with ICD-10 mortality codes. Once death certificates are coded, the information is sent back to DSHS Center for Health Statistics (CHS). CHS produces a Weekly Pneumonia and Influenza (P&I) Death Report and sends it to the State Influenza Surveillance Coordinator for inclusion in the Texas Weekly Flu Report. P&I deaths are identified based on ICD-10 multiple cause of death codes, and in particular, pneumonia and influenza mortality codes. Delays inherent in death reporting and coding practices may cause the number of reported P&I deaths to vary considerably each week.

Influenza-associated pediatric deaths

Deaths that are associated with influenza in children < 18 years of age are reported to health departments in Texas. *This condition is reportable by law in Texas.* <http://www.dshs.state.tx.us/idcu/disease/IAPM/>

Laboratory

DSHS Austin laboratory

Providers voluntarily submit specimens to the DSHS Austin laboratory for influenza PCR testing throughout the season. Providers sign up for this program through their local health departments.

Laboratory Response Network (LRN) laboratories

Providers voluntarily submit specimens to one of the 9 Texas LRNs for influenza PCR testing throughout the season. Providers sign up for this program through their local health departments.

NREVSS

Laboratories voluntarily report influenza and other respiratory virus data weekly through the CDC's online NREVSS reporting system. **Laboratories sign up for this program by contacting DSHS.** <http://www.cdc.gov/surveillance/nrevss/>

Recommended Resources

Texas Department of State Health Services

DSHS influenza page: <http://www.texasflu.org/>

Influenza surveillance data and reports: <http://www.dshs.state.tx.us/idcu/disease/influenza/surveillance/>

Map of Texas Health Service Regions: <http://www.dshs.state.tx.us/regions/state.shtm>

Centers for Disease Control and Prevention

National FluView weekly flu report: <http://www.cdc.gov/flu/weekly/>

Variant influenza viruses: <http://www.cdc.gov/flu/swineflu/variant.htm>

Avian influenza viruses: <http://www.cdc.gov/flu/avianflu/index.htm>

Swine influenza viruses: <http://www.cdc.gov/flu/swineflu/index.htm>

Infection Control in Healthcare Facilities: <http://www.cdc.gov/flu/professionals/infectioncontrol/>

Seasonal Flu Information for Schools and Childcare Providers: <http://www.cdc.gov/flu/school/index.htm>

Texas Respiratory Syncytial Virus (RSV) Surveillance Components and Measures

Technical Notes

The start of RSV season is the first of two consecutive weeks with $\geq 10\%$ of tests positive, and the end is the last of two consecutive weeks with $\geq 10\%$ of tests positive.

“The percentage of positive detections reflects test ordering practices and might not directly reflect disease burden.”
Centers for Disease Control and Prevention. Respiratory Syncytial Virus-United States, July 2007-June 2011. Morbidity and Mortality Weekly Report (MMWR). September 2011; 60 (35):1203-1206.

National and state RSV analyses typically rely on antigen test data; however PCR testing is also becoming more common.

Regional-level results may not be reliable if the number of RSV tests performed each week is small or if reporting is inconsistent. There is currently insufficient data/ participating RSV reporters to properly present trends for the following regions:

PHR 10 (Upper Rio Grande/El Paso)

RSV is not a notifiable condition in Texas. Sentinel laboratories voluntarily enter their RSV data weekly into the CDC National Respiratory and Enteric Virus Surveillance System (NREVSS), and these data are compiled to create the Texas Weekly RSV Report

Texas COVID-19 Surveillance Components and Measures

Provisional Data

Provisional data may not be complete. More data may be coming in to complete the data set, and DSHS and others have not completed quality checks of the information. Provisional data become final once the data set is complete and quality checks are finished. That process often takes several months.

COVID-19 Case Reporting

Investigations are performed on all cases of Coronavirus Disease 2019 (COVID-19). This condition is reportable by law in Texas.

Confirmed Case

A person who has tested positive through a molecular test that looks for the virus's genetic material. Texas uses the confirmed case definition adopted by the Council of State and Territorial Epidemiologists (CSTE). See the DSHS Epidemiologic Case Criteria Guide for full case definition.

Probable Case

A person who has tested positive through an antigen test. Texas uses the probable case definition adopted by the Council of State and Territorial Epidemiologists (CSTE).

New Confirmed Cases, New Probable Cases or Newly Reported Fatalities

Cases or fatalities reported for the first time on the DSHS COVID-19 report that day.

Mortality

Due to constraints related to COVID-19 funding, updates to the COVID-19 fatality data may be delayed, and some information might be missing or not aligned with the latest MMWR report.

COVID-19-associated deaths in Texas Residents. Deaths associated with COVID-19 are reported to health departments in Texas. Deaths suspected of being caused by a reportable disease are required to be reported in accordance with Texas Health and Safety Code §81.045. Death certificates must be filed with Texas DSHS within 14 days of the date of death but may be amended at a later date. COVID-19 associated deaths are deaths for which COVID-19 is listed as a cause of death on the death certificate. A medical certifier, usually a doctor, determines the cause(s) of death. DSHS does not include deaths of people who had COVID-19 but died of an unrelated cause. Fatalities are reported by where the person lived as listed on the death certificate. Fatality data may include both confirmed and probable cases. **Data is considered provisional and subject to update as additional information becomes available until annual data has been finalized.**

†While reviewing report production methods, the 2023 COVID-19-Associated Deaths count as well as 2023 subtotals reported within tables 3 through 6 were found to have incorporated fatalities that had been reported with dates of death up through the report date rather than up through the end of the MMWR week. This has been corrected as of the MMWR week 38 report. The 2023 count thus was adjusted from with the original calculation method to the displayed count.

Laboratory

Positive SARS-CoV-2 laboratory results are reported to the Texas DSHS National Electronic Disease Surveillance System (NEDSS) by laboratories or local health departments. Positive SARS-CoV-2 laboratory results, including antigen, antibody, and molecular tests performed under CLIA oversight must be reported to Texas DSHS in accordance with Texas Health and Safety Code §81.045. This number does not include tests with results pending. Testing data is considered provisional and subject to update as additional information becomes available until annual data has been finalized.

Genomic Surveillance

Variants of SARS-CoV-2, the virus that causes COVID-19, are expected to continue to emerge, a natural process that occurs as viruses spread. Some variants will disappear, and others will continue to spread and may overtake previous variants. For example, the ancestral strain of the virus that caused the first Texas COVID-19 cases in early 2020 is no longer being detected. It was displaced by the Alpha variant, followed by the Delta variant and Omicron variants and may continue to be replaced by other emerging variants.

The Texas SARS-CoV-2 genomic sequencing data includes data provided by the CDC's commercial partner laboratories as a part of the national SARS-CoV-2 genomic surveillance program, sequencing conducted at academic and commercial laboratories, and Texas Department of State Health Services Austin Laboratory's genomic sequencing. The programs sequence hundreds of COVID-19 cases each week to monitor the spread of variants in Texas. This information helps scientists and public health professionals understand how the virus spreads and changes over time. It also helps researchers know whether existing COVID-19 tests, treatments, and vaccines will continue to work against emerging variants.

This report shows data on variants of concern (VOC), variants of interest (VOI) and variants being monitored (VBM) with all other variants grouped together. More information on variant classification is available on the CDC website at <https://www.cdc.gov/coronavirus/2019-ncov/variants/>

Lab Confirmed COVID-19 Patients in Texas Hospitals

The total number of patients in Texas hospitals who have tested positive for COVID-19.

Appendix

Appendix 1: COVID-19 Data Sources and Limitations

Data sources for this report are Texas DSHS Vital Statistics, COVID-19-Associated Fatalities, and National Electronic Disease Surveillance System (NEDSS), each of which have associated limitations. The use of multiple data sources can lead to overestimation through duplication of case reports within each system, and between systems. COVID-19 case investigation data entered in NEDSS is dependent upon accurate user entry of case information into the system and resources available for public health follow up.

Limitations

Vital Statistics

- Delay in reporting of COVID-19-associated fatalities of 10-14 days on average from date of death.

NEDSS

- Cases created off electronic laboratory report (ELR) feed may be missing information, such as patient race or ethnicity, or complete address.
- The completeness of case investigations is dependent on the information available to case investigators in the initial report, the resources available to local health departments for case follow up, and the availability of medical records and the information provided by the case.
- Case count data from 2020 and 2021 is considered finalized. Data from 2022 and 2023 are considered provisional and subject to update until data are finalized.

Note: DSHS completed the process of transferring case investigations from the COVID Case Investigation System (CCIS) to the Texas National Electronic Disease Surveillance System (NEDSS) in November 2021. Deduplication between cases entered into CCIS and NEDSS has taken place, and the transition was completed as of 11/15/2021. NEDSS data cited in this report is provisional and subject to the limitations of resources available for case investigation, the participation of the public in case investigation, and the process of transition from CCIS to NEDSS. Deduplication of newly reported COVID-19 laboratory results in NEDSS occurs automatically prior to data ingestion into NEDSS preventing generation of duplicate case reports.

Variant Dashboard Limitations

Due to constraints related to COVID-19 funding, updates to the data may be delayed, and some information might be missing or not aligned with the latest MMWR report.

The data shown in this report is collected by the CDC's commercial partner laboratories as a part of the national SARS-CoV-2 genomic surveillance program, commercial laboratories, academic laboratories, and Texas Department of State Health Services Austin Laboratory's genomic sequencing. Because samples collected by CDC National SARS-CoV-2 Strain Surveillance (NS3) partner laboratories are intended to be representative of Texas' proportion of the national population and estimate the prevalence of variants statewide, this data is not intended to count every variant case present in Texas. It does not necessarily represent geographic trends within the state of Texas. Some areas may be oversampled due to high numbers of participating laboratories. Local health officials may have more specific information regarding variant cases in their jurisdictions. No sample weighting is applied to this data. Sequencing results included in this data set take an average of 11 days from initial sample collection to report date. DSHS will post results after two weeks so that there will be enough results to represent a reliable estimate. The data visualization on the DSHS website is updated weekly on Tuesdays before 5 pm. Data is displayed by week of sample collection. Data should be considered preliminary and subject to change.

COVID Case Numbers

Case numbers and percentages might vary from the previous COVID-19 report due to continual changes in previous week totals. Data are provisional and are subject to change.

Possible attributes of various case numbers:

- Backlog from of COVID-19 results from reporting facilities
- Electronic laboratory reporting (ELR) failure in importing lab data
- Evidence of increased transmissibility
- Evidence of increased disease severity

Appendix 2: COVID-19 Data Cleaning Procedures

This report is generated on a weekly cycle, with the report prepared on Thursdays covering a one-week period beginning and ending the previous MMWR week.

Deduplication occurs routinely within NEDSS and ELR imports are prevented from creating duplicate case investigation and patient records if records matching first name, last name, date of birth and patient sex already exist. Data cleaning for this report included removal of out of state cases, matching residency based on patient address and county assignment in NEDSS. County of residency is determined based on zip code of residence, followed by provider zip code if residence zip code is unavailable. If both provider and residence zip codes are unavailable, ordering facility zip code is used. Out of bounds dates for specimen collection pre-January 1, 2020, and post report date are recoded as blank.

For the ELR Lab data file, the following cleaning procedures were used; out of state data was removed, residency is determined based on zip code of residence, followed by provider zip code if residence zip code is unavailable. If both provider and residence zip codes are unavailable, ordering facility zip code is used. Records are deduplicated by testing lab accession number, specimen collection date, ordered test code and reporting facility CLIA.

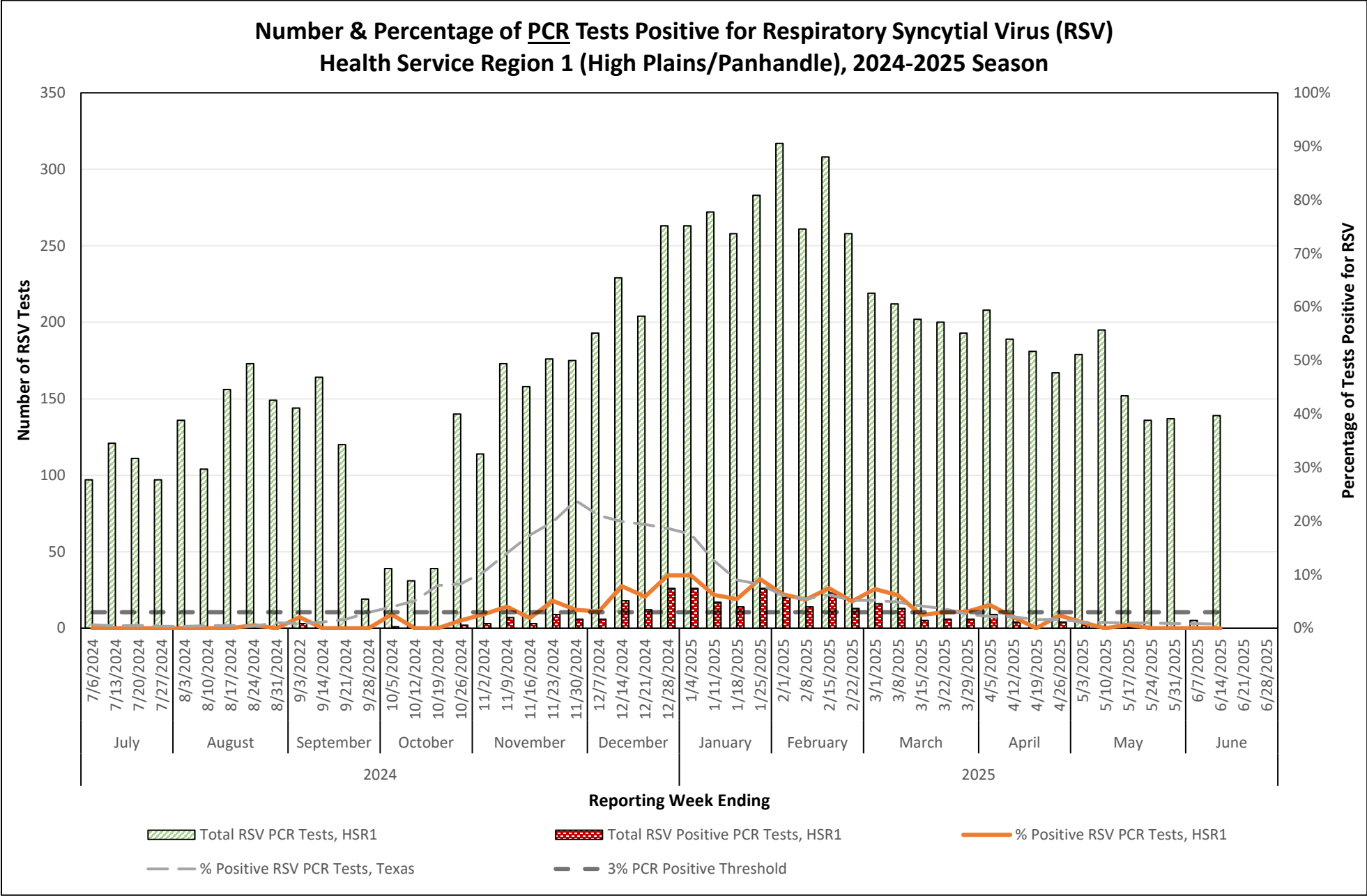
Appendix 3: COVID-19 MMWR Weeks

For a full list of MMWR Week dates please visit: <https://ndc.services.cdc.gov/wp-content/uploads/MMWR-Week-Log-2022-2023.pdf>

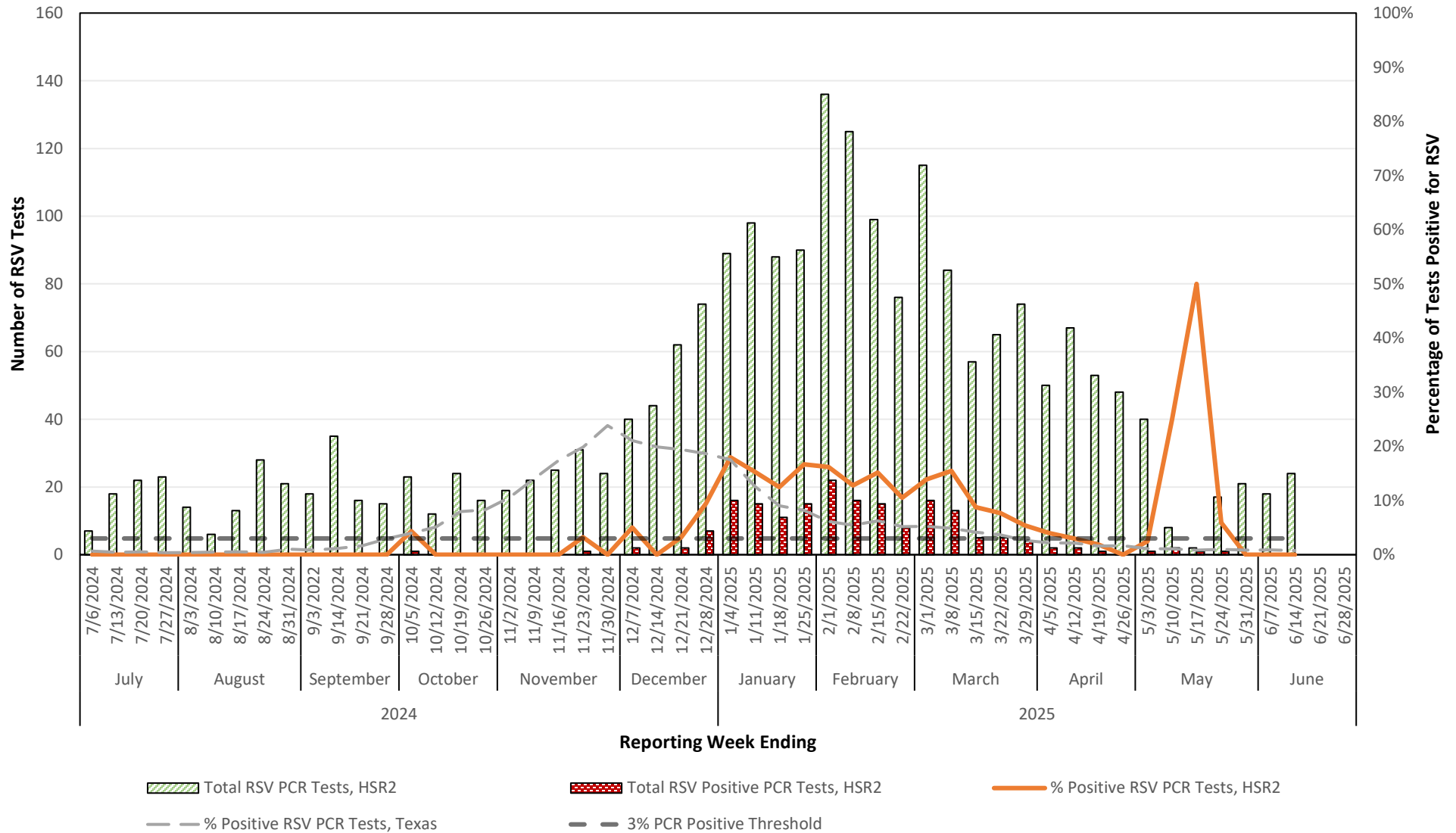
Appendix 4: COVID-19 Texas Demographic Center

For population projections in Texas by county, please visit: <https://demographics.texas.gov/Projections/>

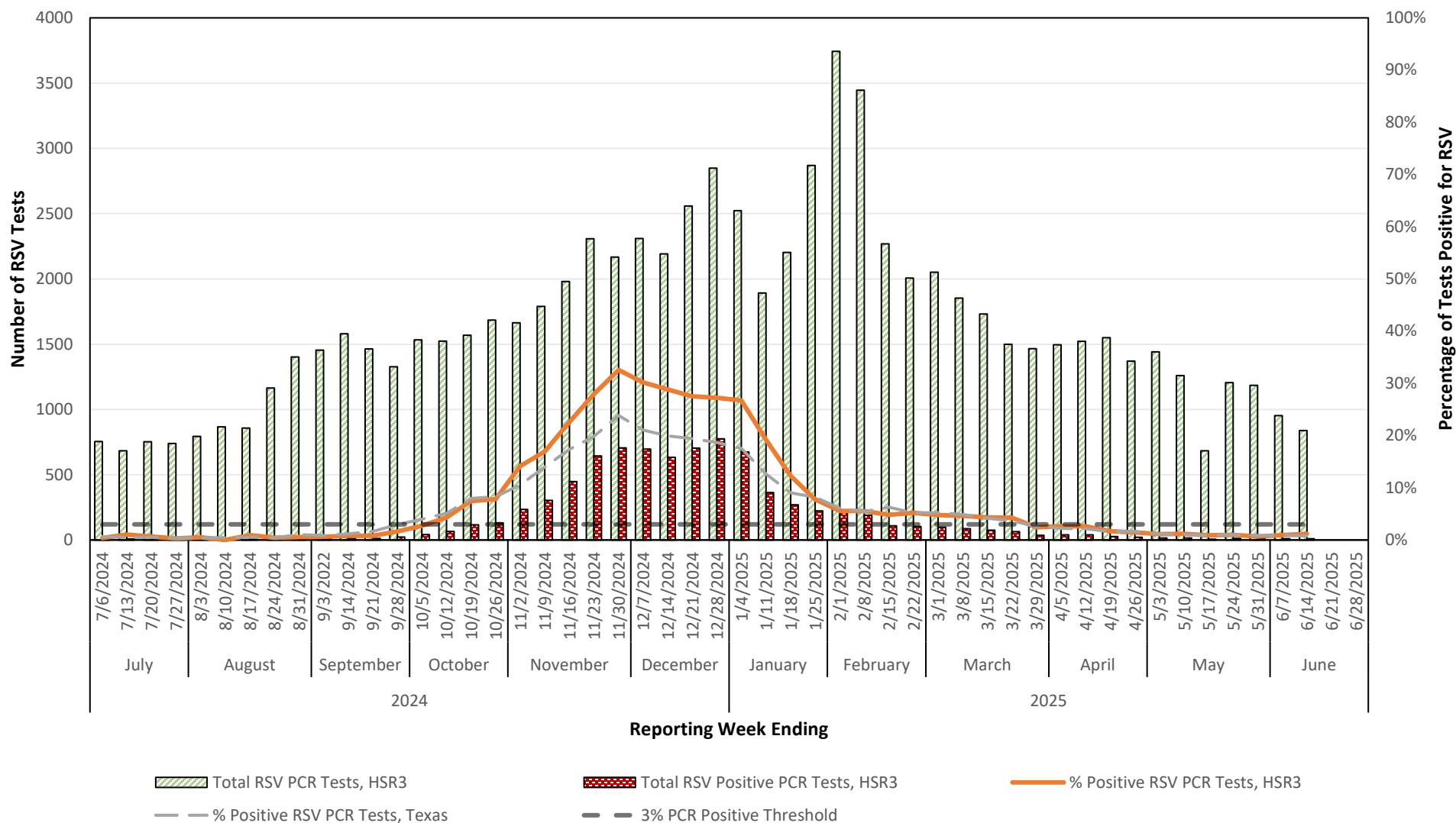
Appendix 5: Texas Respiratory Syncytial Virus (RSV) Surveillance by Health Service Region



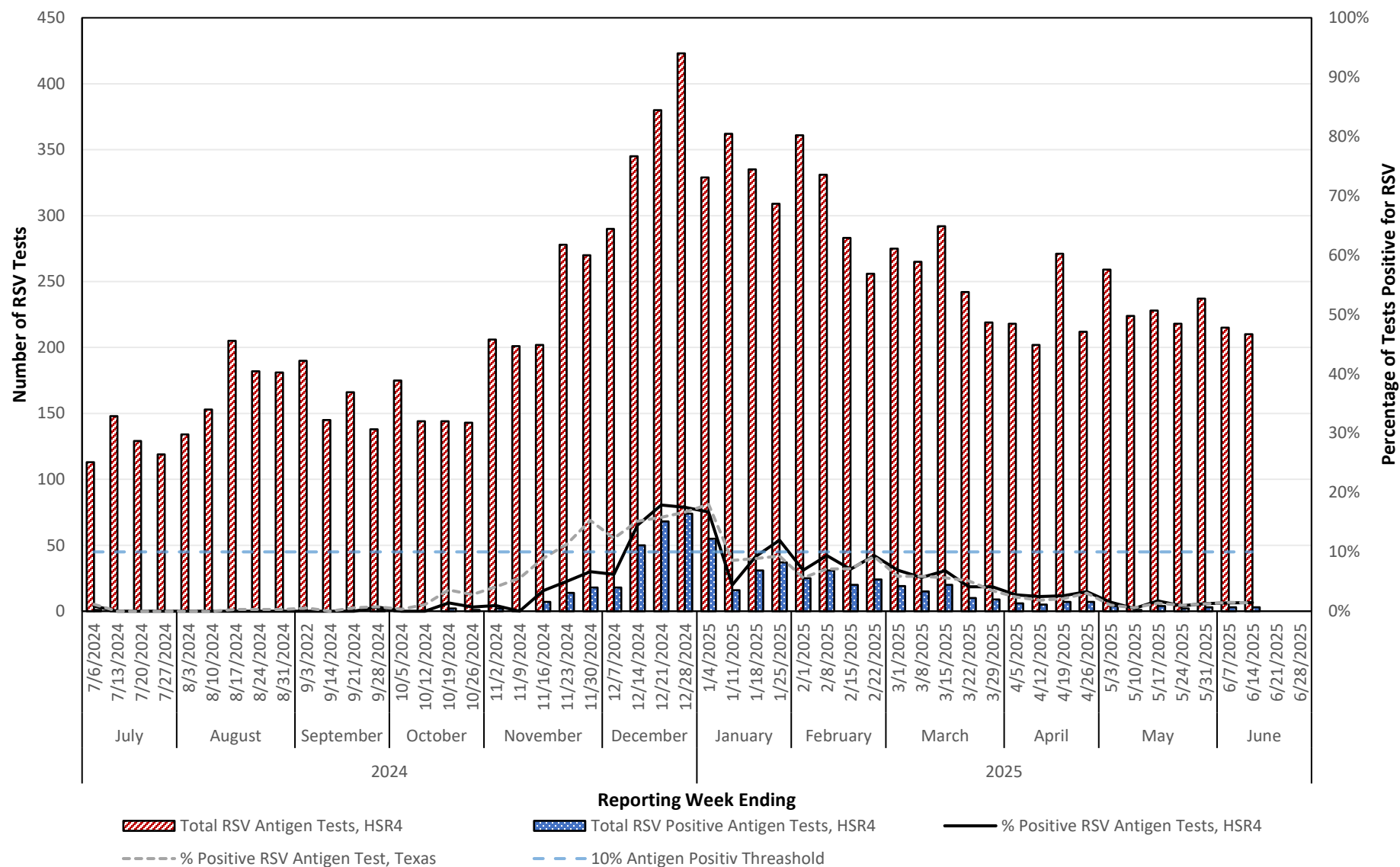
Number & Percentage of PCR Tests Positive for Respiratory Syncytial Virus (RSV) Health Service Region 2 (Northwest Texas), 2024-2025 Season



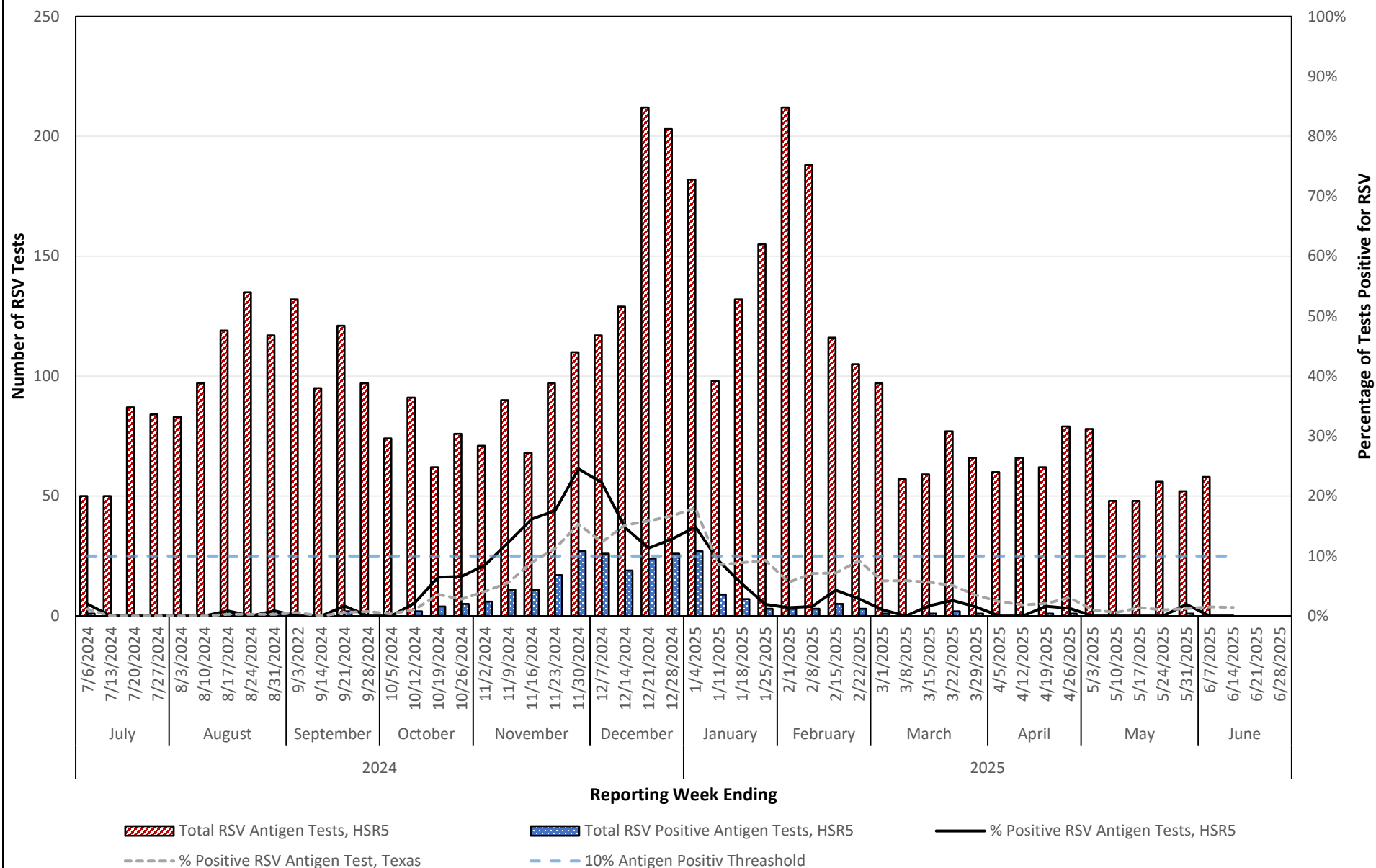
Number & Percentage of PCR Tests Positive for Respiratory Syncytial Virus (RSV) Health Service Region 3 (DFW Metroplex), 2024-2025 Season



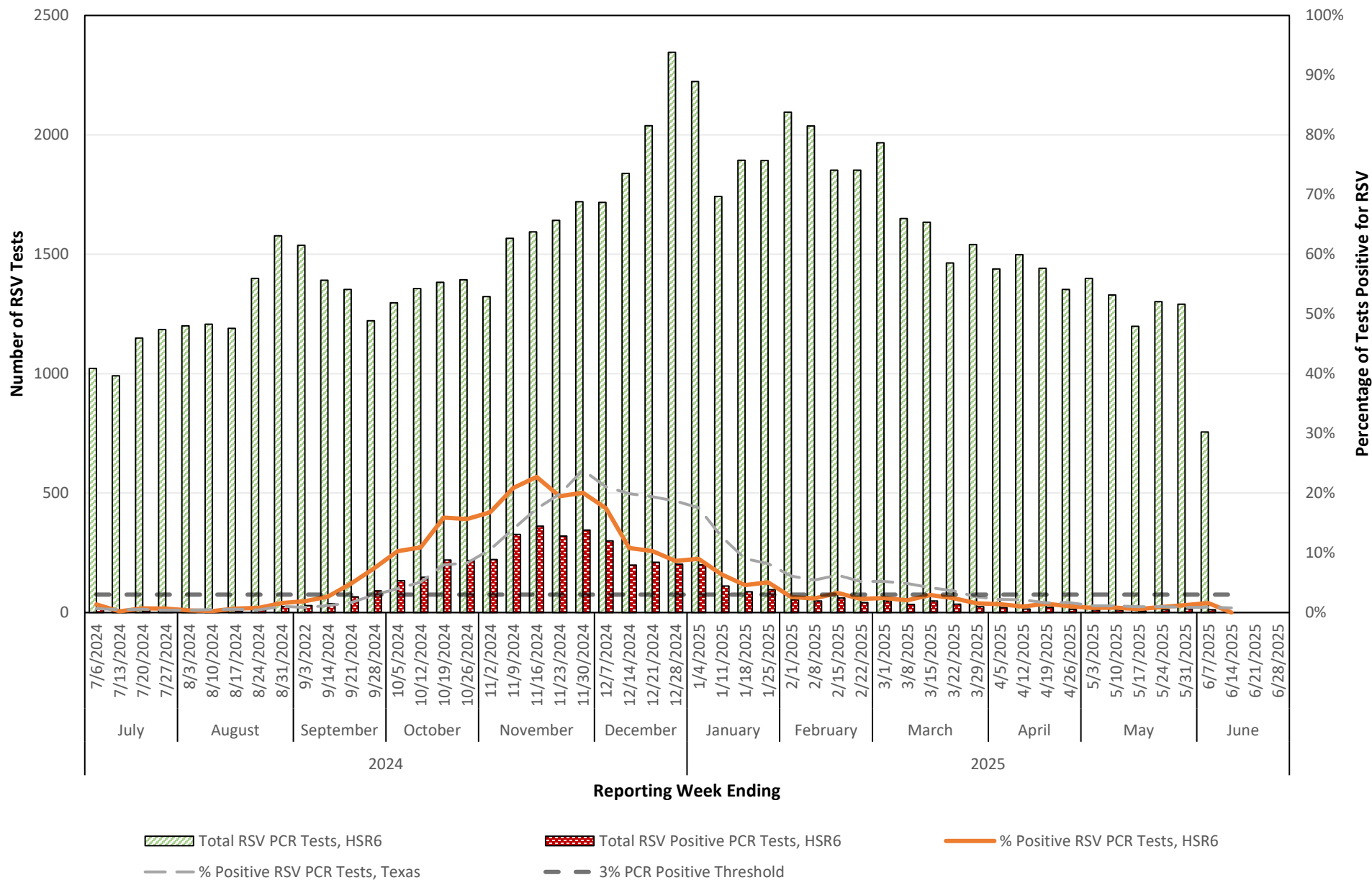
Number & Percentage of Antigen Tests Positive for Respiratory Syncytial Virus (RSV) Health Service Region 4 (Upper East Texas), 2024-2025 Season



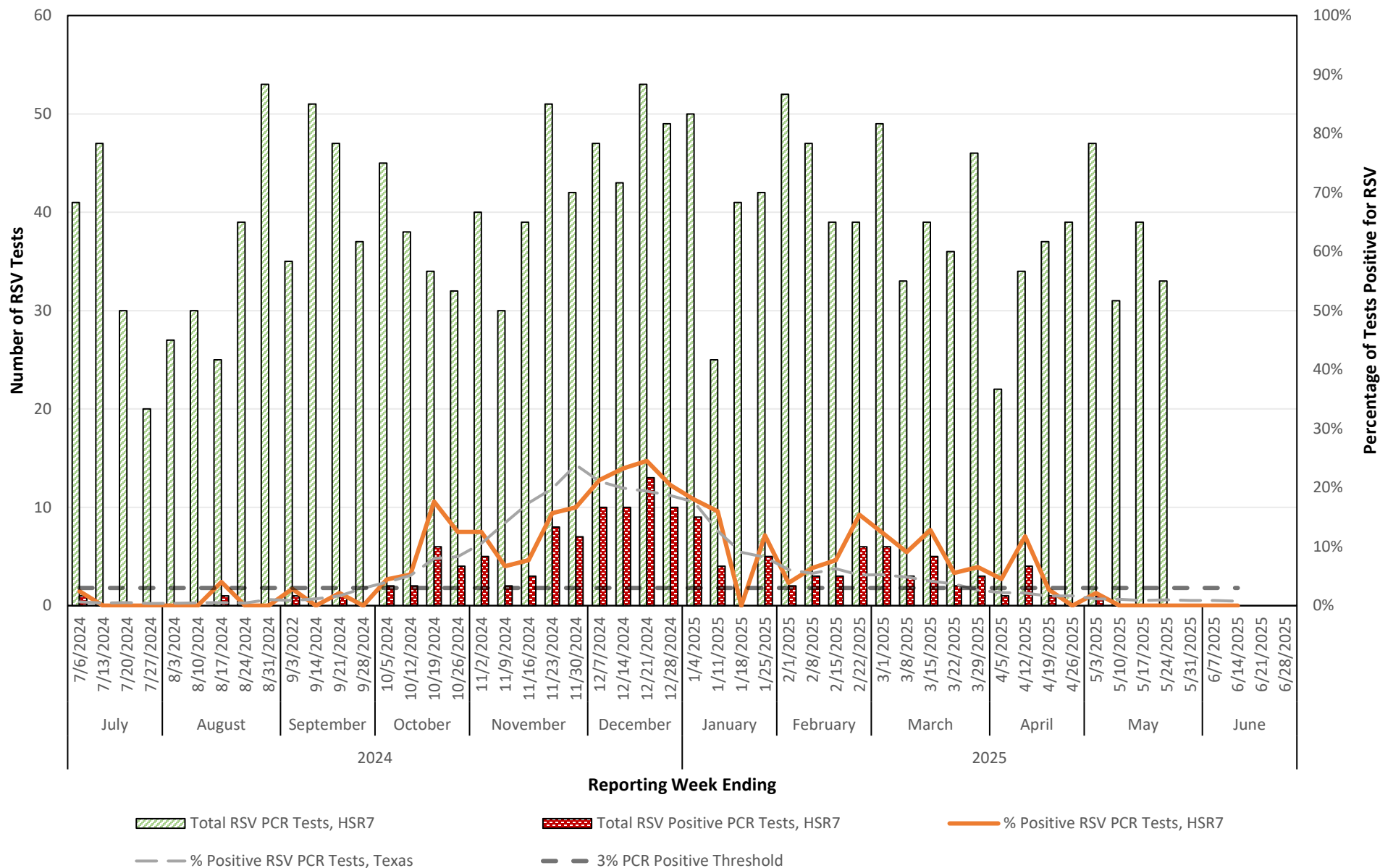
Number & Percentage of Antigen Tests Positive for Respiratory Syncytial Virus (RSV) Health Service Region 5 (Southeast), 2024-2025 Season



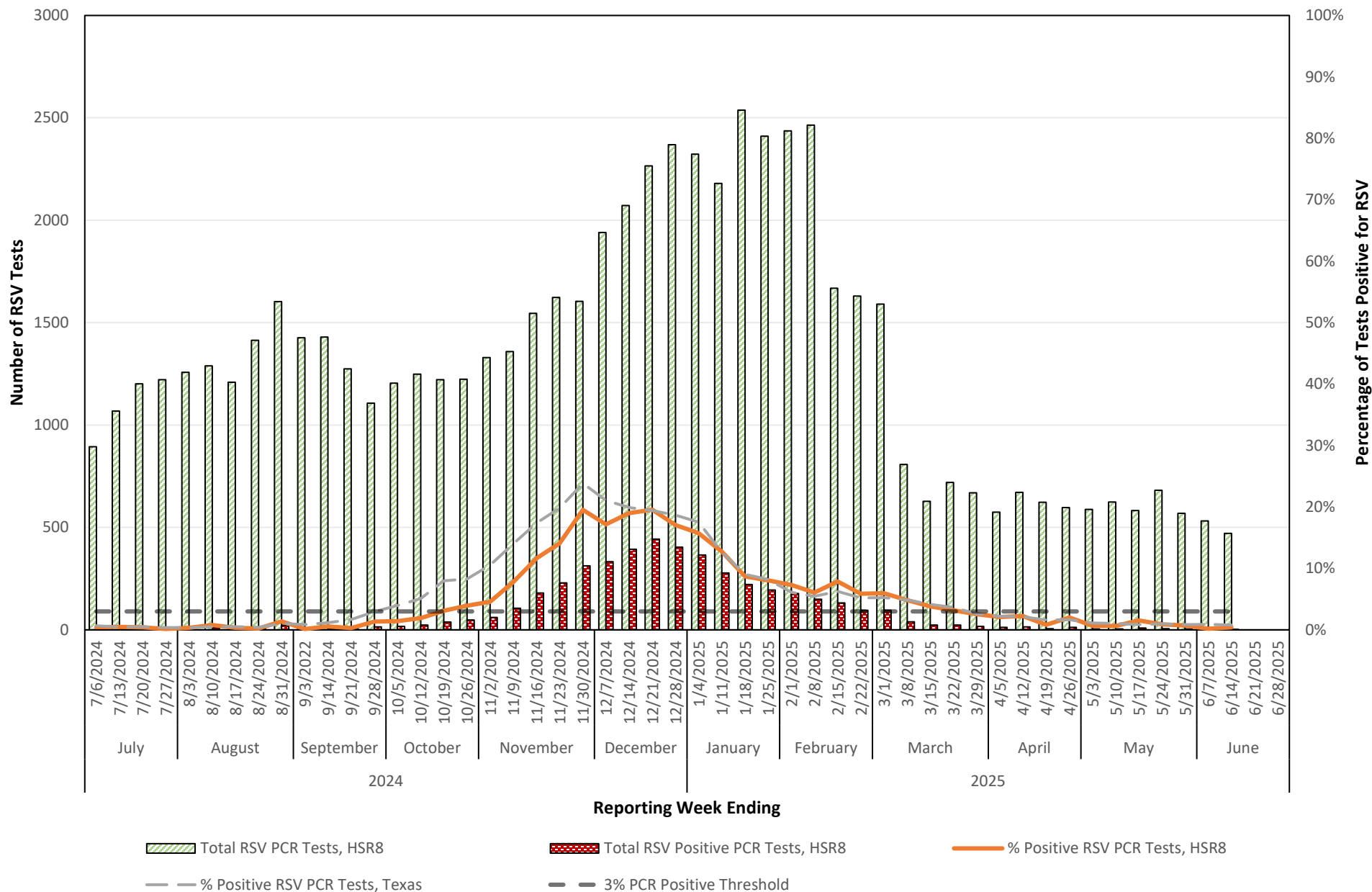
Number & Percentage of PCR Tests Positive for Respiratory Syncytial Virus (RSV) Health Service Region 6 (Gulf Coast/Houston), 2024-2025 Season



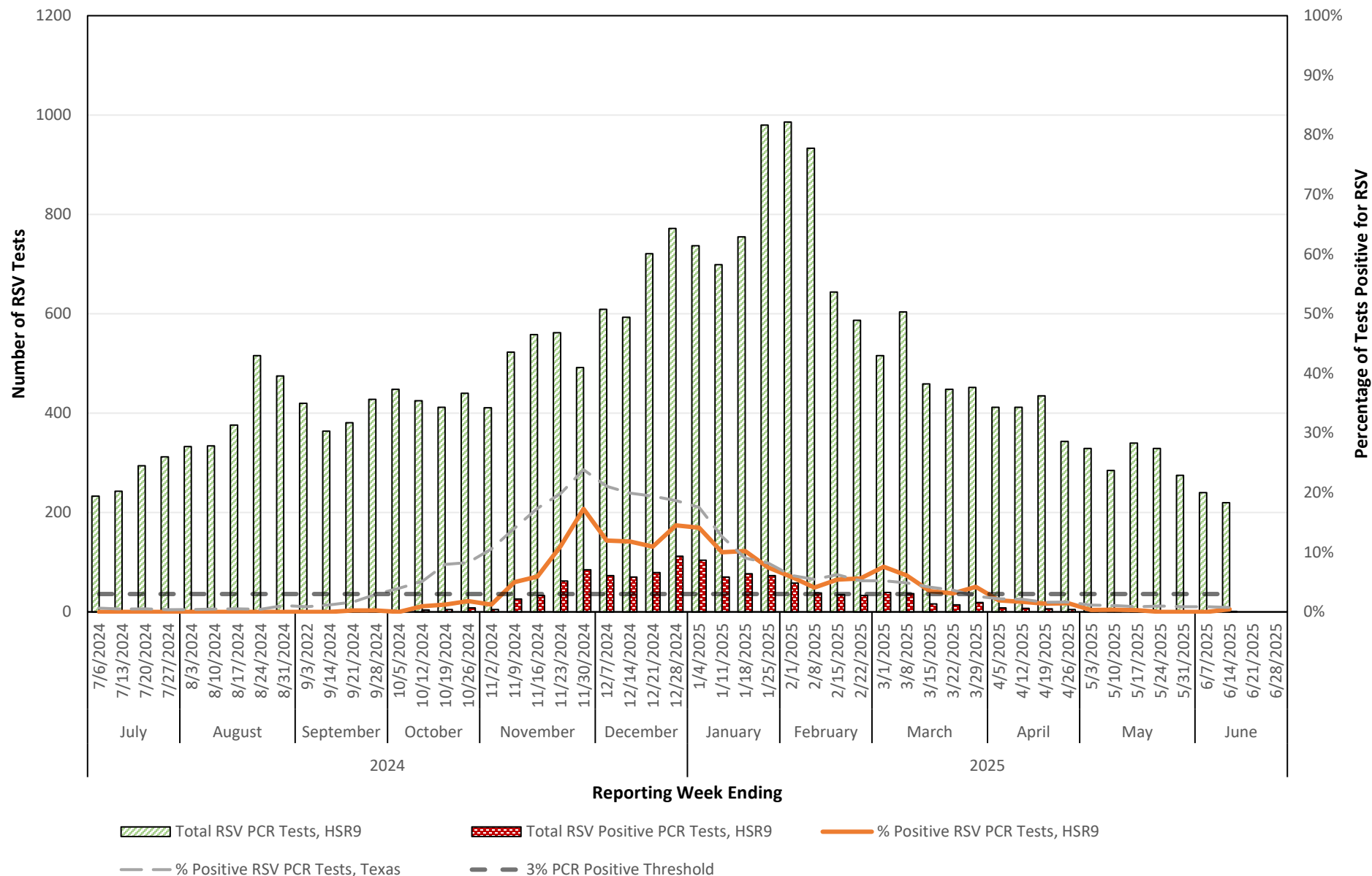
Number & Percentage of PCR Tests Positive for Respiratory Syncytial Virus (RSV) Health Service Region 7 (Central Texas), 2024-2025 Season



Number & Percentage of PCR Tests Positive for Respiratory Syncytial Virus (RSV) Health Service Region 8 (Upper South Texas), 2024-2025 Season



Number & Percentage of PCR Tests Positive for Respiratory Syncytial Virus (RSV) Health Service Region 9 (West Texas/Midland/Odessa), 2024-2025 Season



Number & Percentage of PCR Tests Positive for Respiratory Syncytial Virus (RSV) Health Service Region 11 (Lower South Texas), 2024-2025 Season

