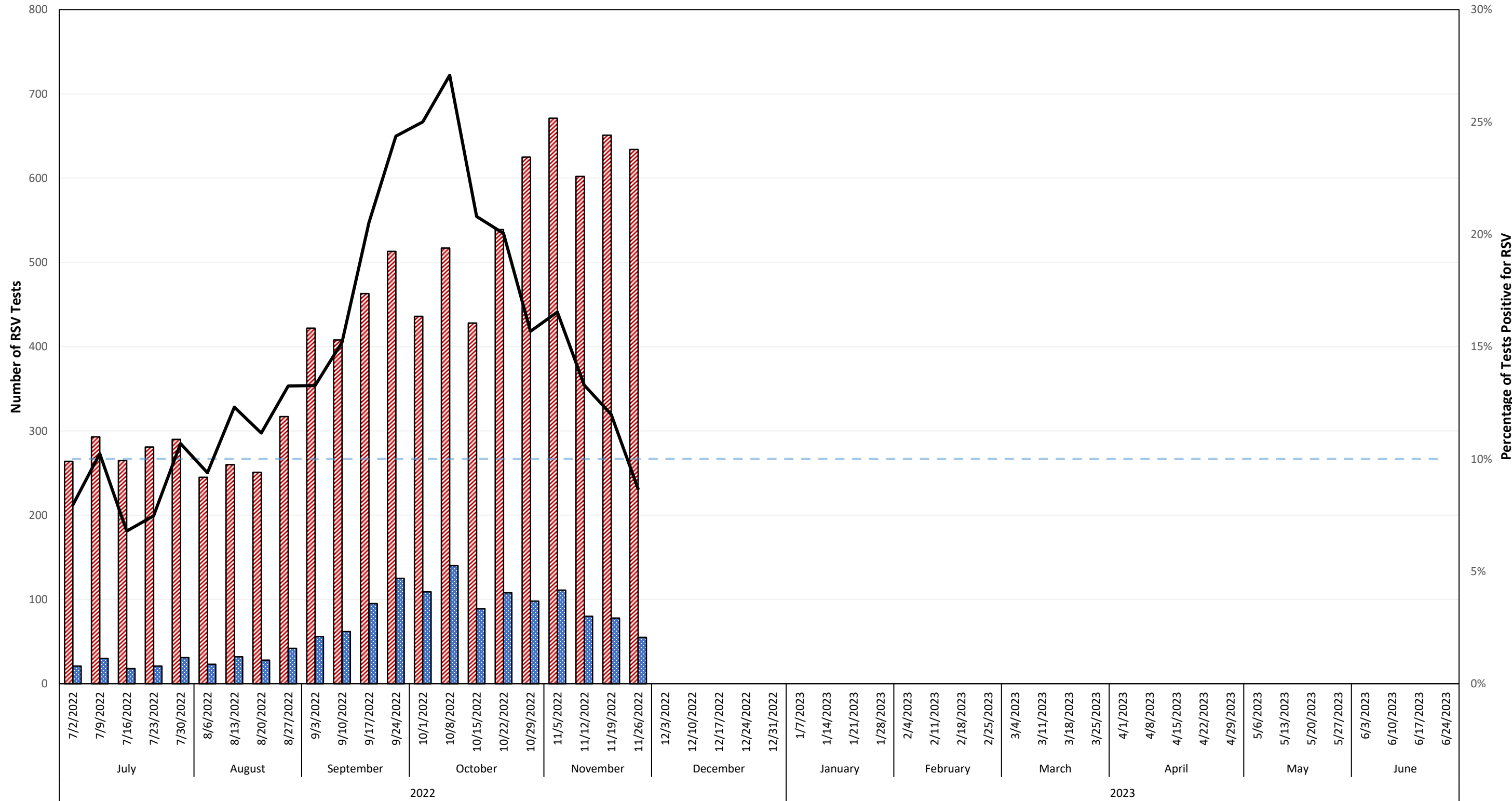
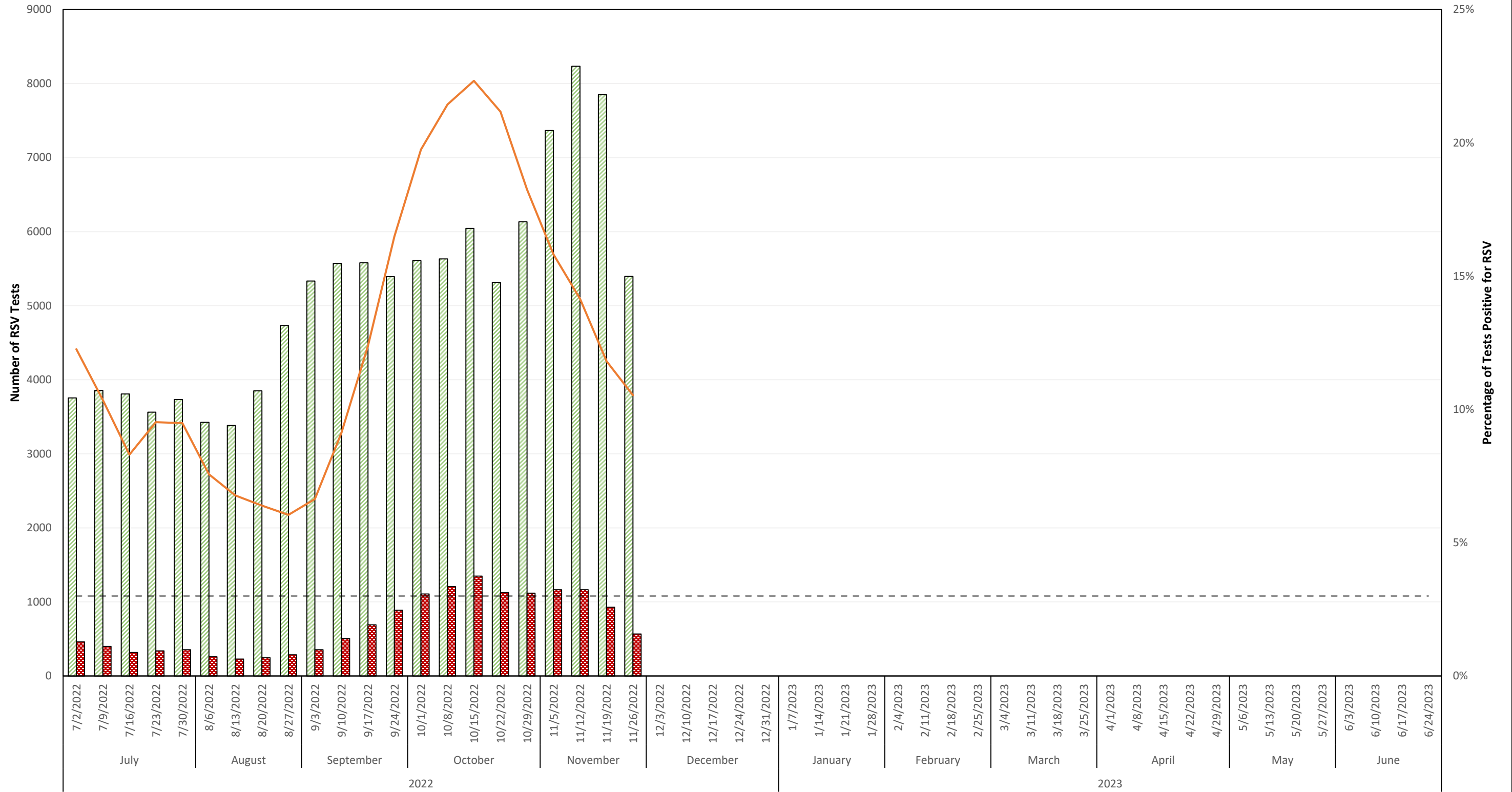


Number & Percentage of Antigen Tests Positive for Respiratory Syncytial Virus (RSV) All Texas Sites, 2022-2023 Season



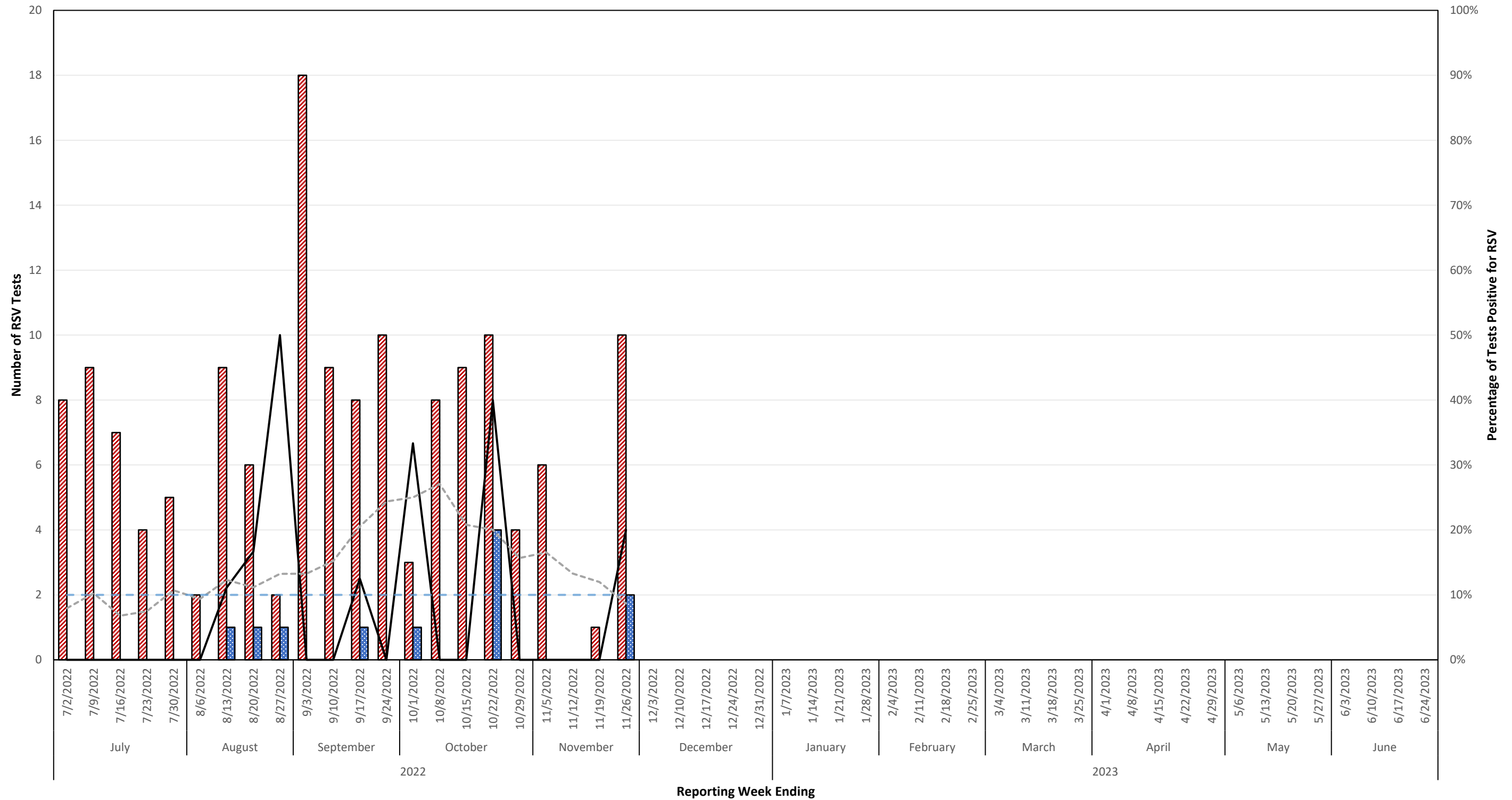
TotalRSV antigen tests, Texas
 Total RSV Positive Antigen Tests, Texas
 10% Positive Threshold
 % Positive RSV Antigen Tests, Texas

Number & Percentage of PCR Tests Positive for Respiratory Syncytial Virus (RSV) All Texas Sites, 2022-2023 Season



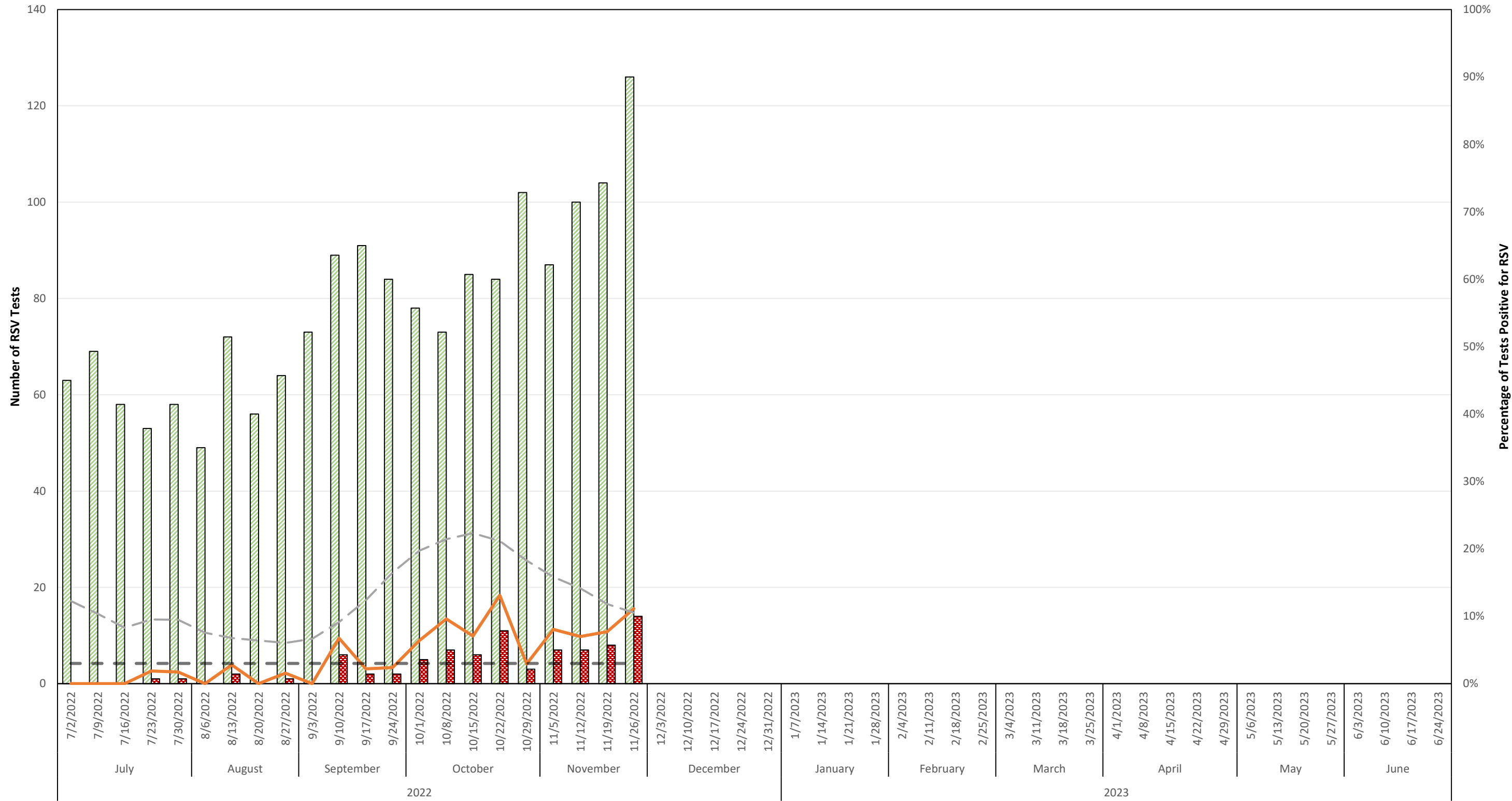
Total RSV PCR Tests, Texas
 Total RSV PCR Positive Tests, Texas
 % Positive RSV PCR Tests, Texas
 3% Positive Threshold

Number & Percentage of Antigen Tests Positive for Respiratory Syncytial Virus (RSV) Health Service Region 1 (High Plains/Panhandle), 2022-2023 Season



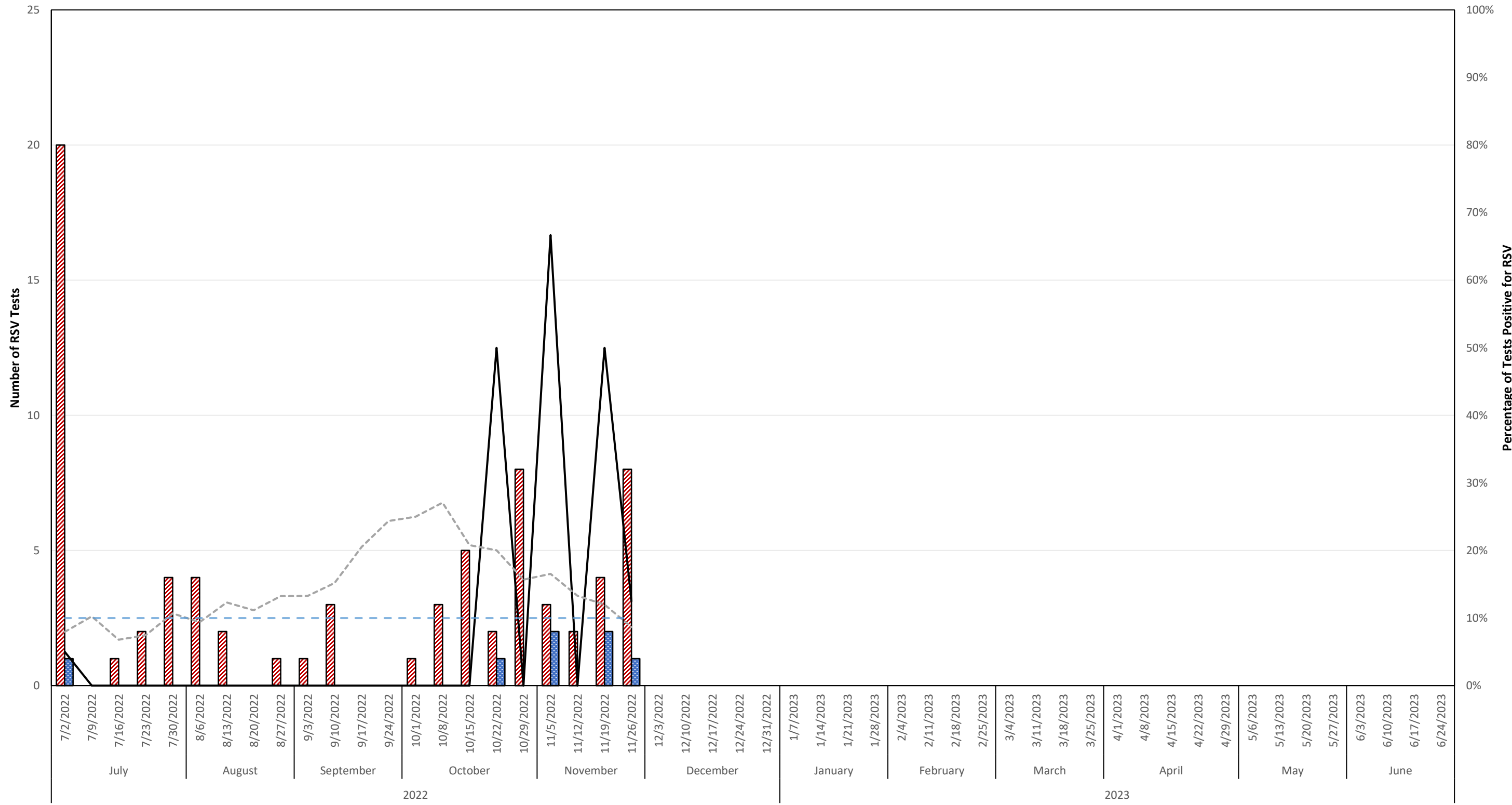
Total RSV Antigen Tests, HSR1
 Total RSV Positive Antigen Tests, HSR1
 % Positive RSV Antigen Tests, HSR1
 % Positive RSV Antigen Test, Texas
 10% Antigen Positiv Threshold

Number & Percentage of PCR Tests Positive for Respiratory Syncytial Virus (RSV) Health Service Region 1 (High Plains/Panhandle), 2022-2023 Season



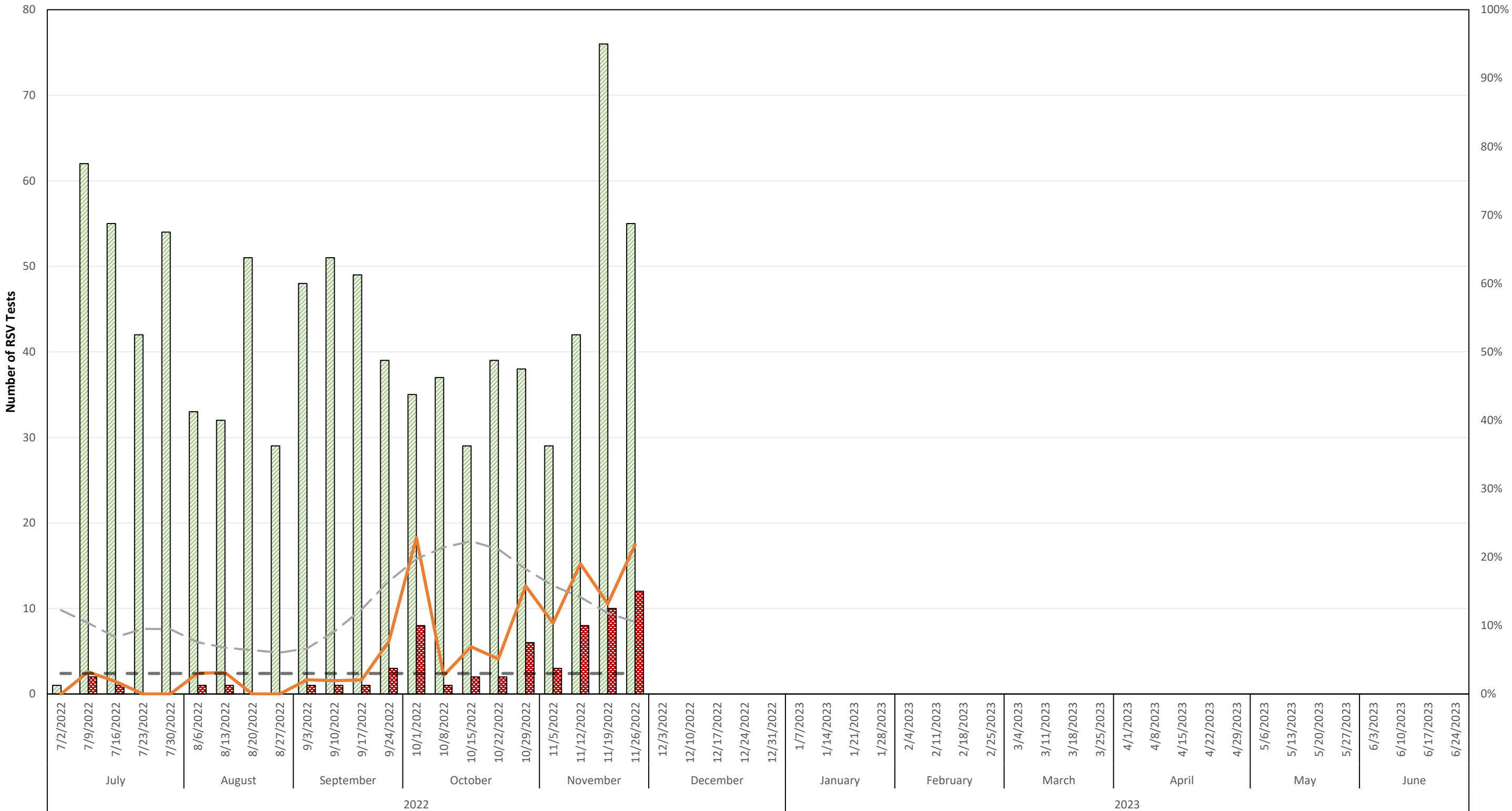
Total RSV PCR Tests, HSR1
 Total RSV Positive PCR Tests, HSR1
 % Positive RSV PCR Tests, HSR1
 % Positive RSV PCR Tests, Texas
 3% PCR Positive Threshold

Number & Percentage of Antigen Tests Positive for Respiratory Syncytial Virus (RSV) Health Service Region 2 (Northwest Texas), 2022-2023 Season



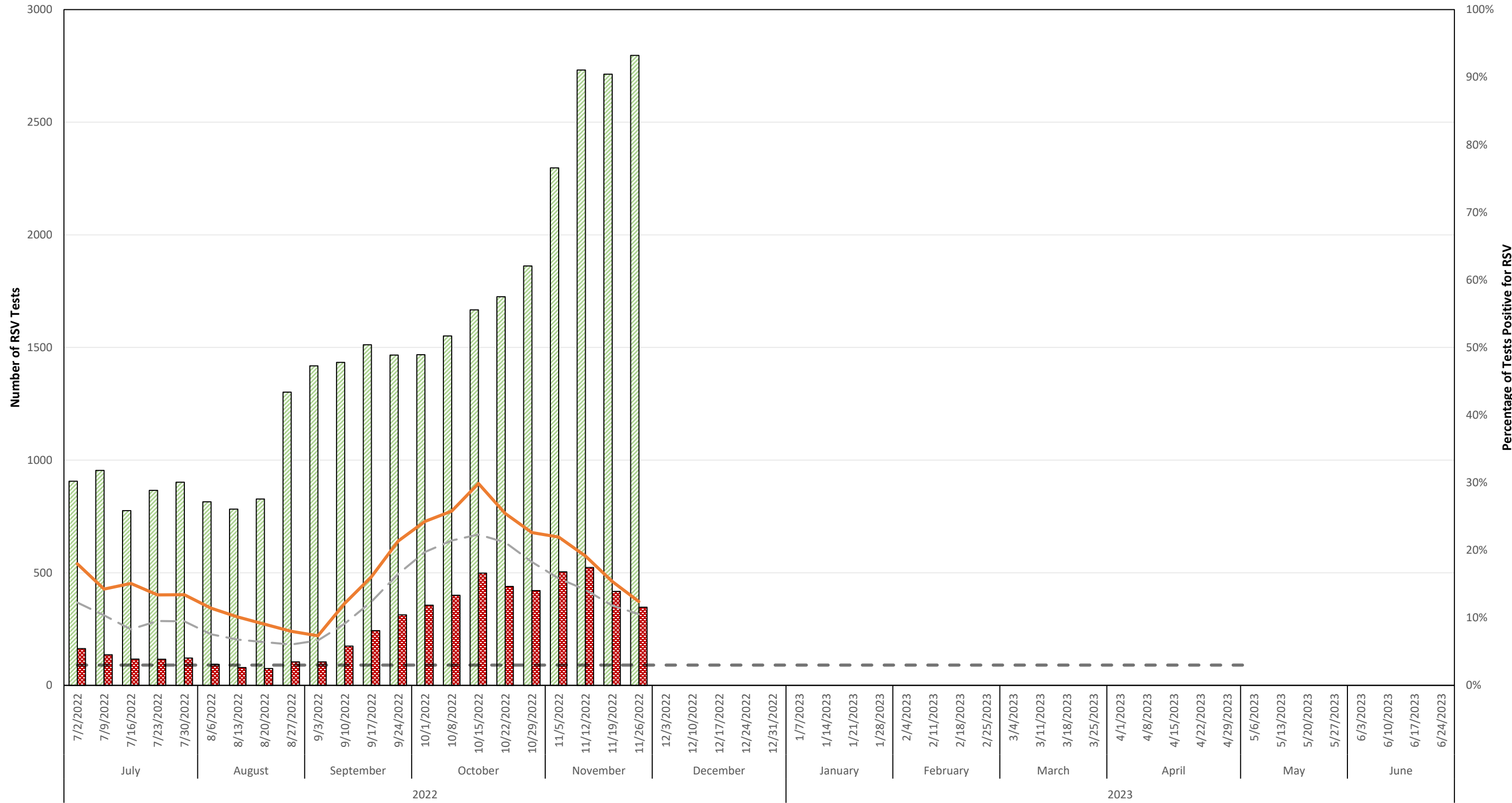
Total RSV Antigen Tests, HSR2
 Total RSV Positive Antigen Tests, HSR2
 % Positive RSV Antigen Tests, HSR2
 % Positive RSV Antigen Test, Texas
 10% Antigen Positiv Threshold

Number & Percentage of PCR Tests Positive for Respiratory Syncytial Virus (RSV) Health Service Region 2 (Northwest Texas), 2022-2023 Season



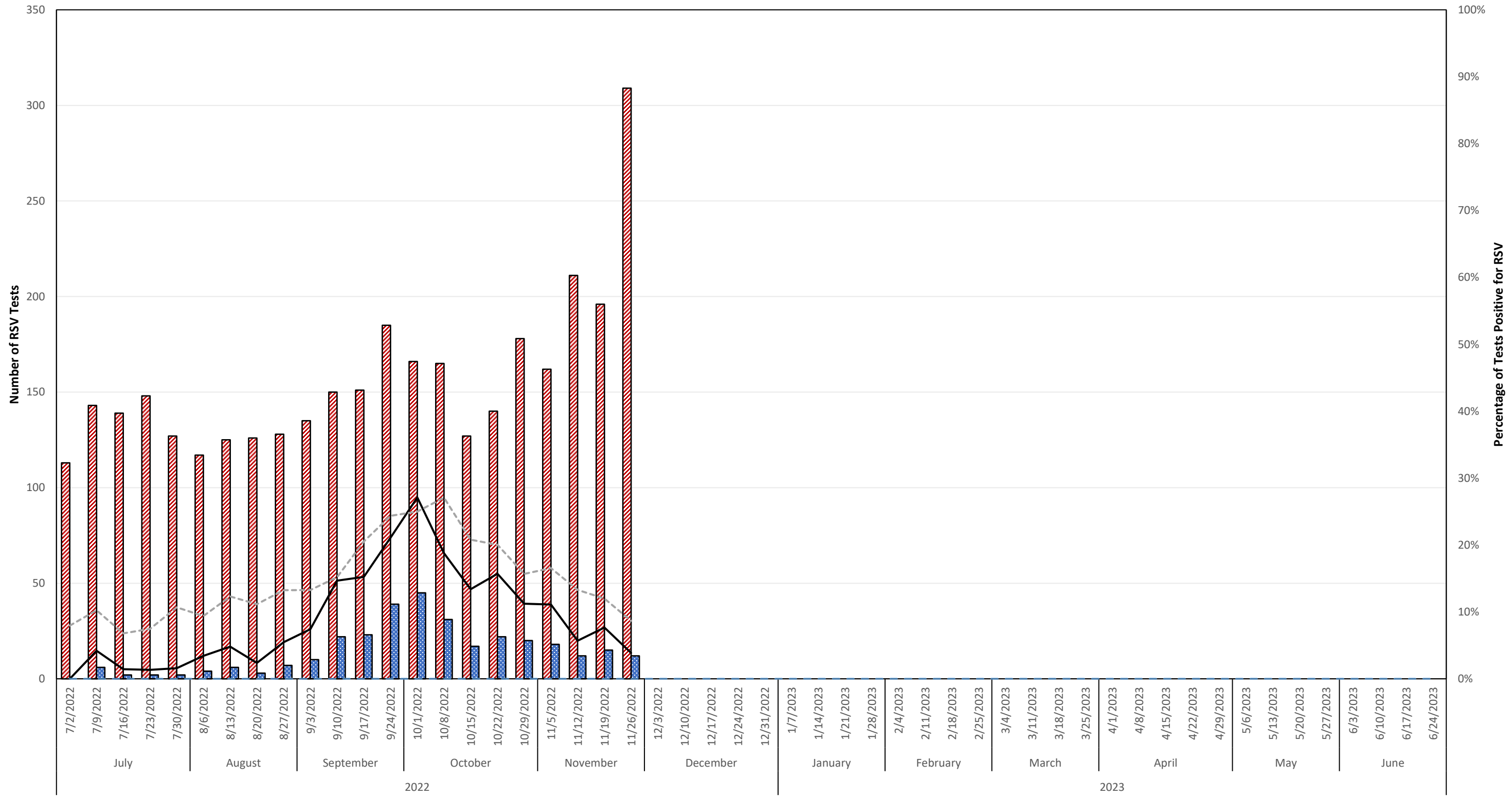
Total RSV PCR Tests, HSR2
 Total RSV Positive PCR Tests, HSR2
 % Positive RSV PCR Tests, HSR2
 % Positive RSV PCR Tests, Texas
 3% PCR Positive Threshold

Number & Percentage of PCR Tests Positive for Respiratory Syncytial Virus (RSV) Health Service Region 3 (DFW Metroplex), 2022-2023 Season



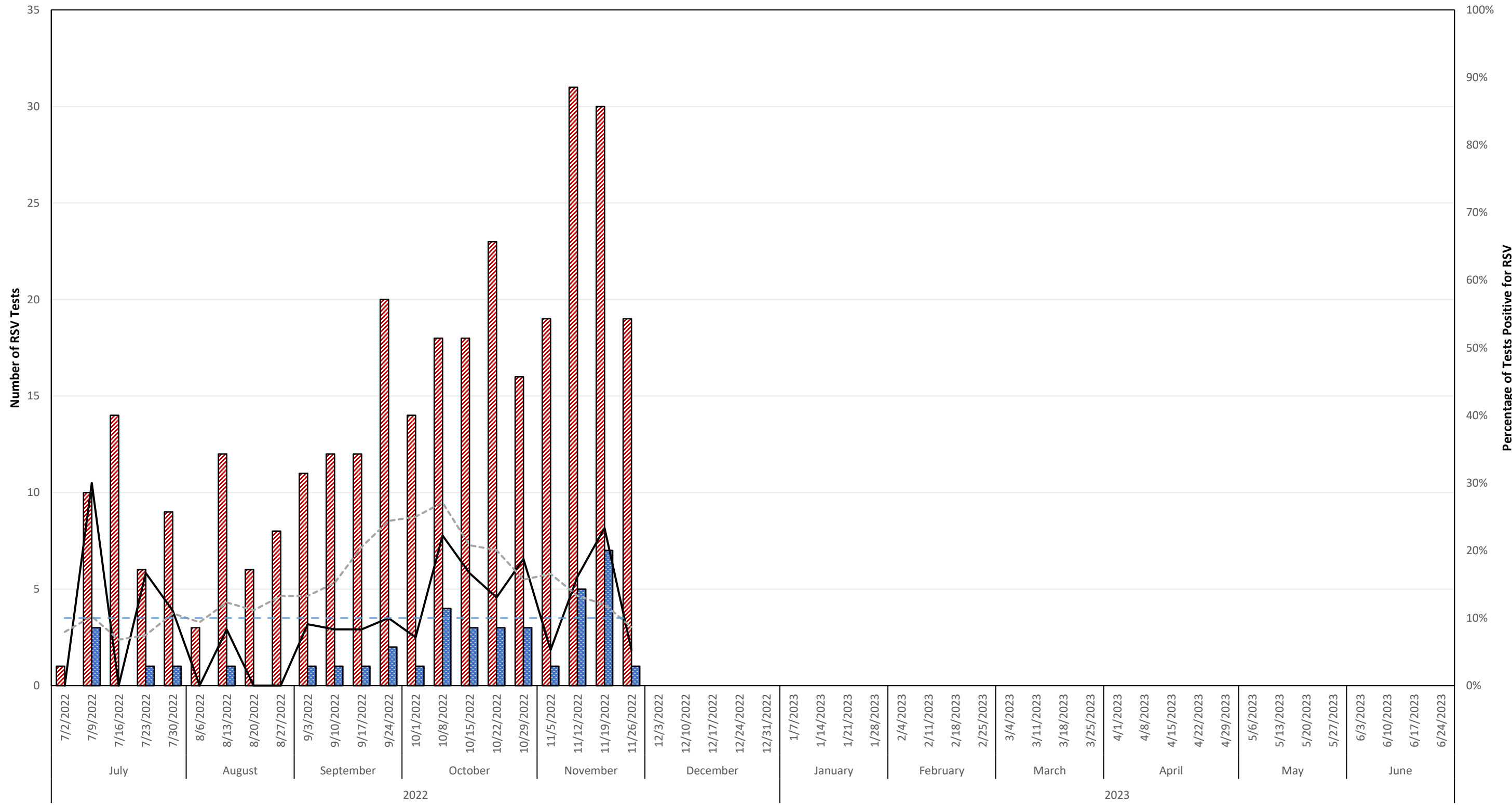
Total RSV PCR Tests, HSR3
 Total RSV Positive PCR Tests, HSR3
 % Positive RSV PCR Tests, HSR3
 % Positive RSV PCR Tests, Texas
 3% PCR Positive Threshold

Number & Percentage of Antigen Tests Positive for Respiratory Syncytial Virus (RSV) Health Service Region 4 (Upper East Texas), 2022-2023 Season



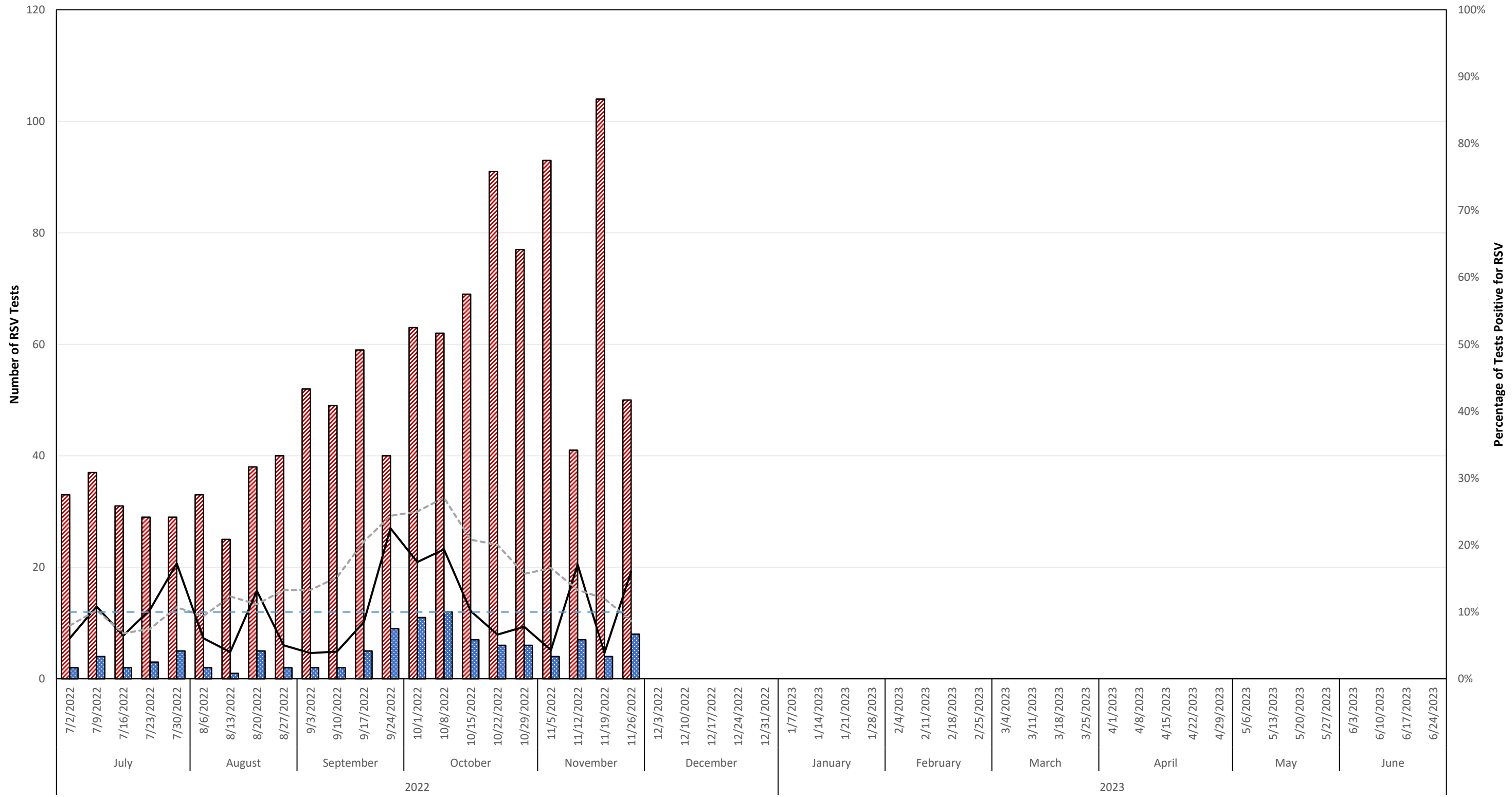
Total RSV Antigen Tests, HSR4
 Total RSV Positive Antigen Tests, HSR4
 % Positive RSV Antigen Tests, HSR4
 % Positive RSV Antigen Test, Texas
 10% Antigen Positiv Threshold

Number & Percentage of Antigen Tests Positive for Respiratory Syncytial Virus (RSV) Health Service Region 5 (Southeast), 2022-2023 Season



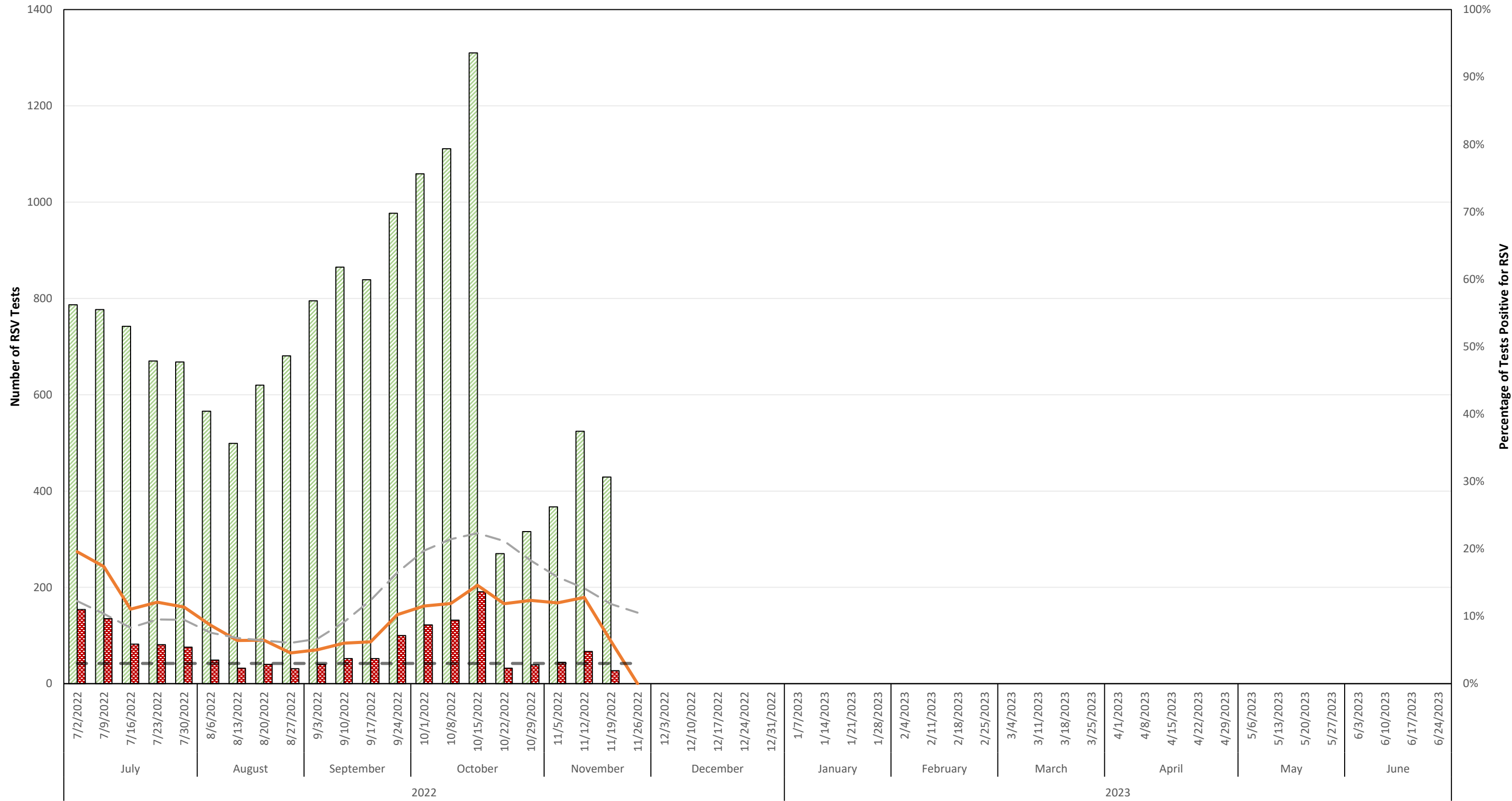
 Total RSV Antigen Tests, HSR5
 Total RSV Positive Antigen Tests, HSR5
 — % Positive RSV Antigen Tests, HSR5
 - - - - % Positive RSV Antigen Test, Texas
 - - - - 10% Antigen Positiv Threshold

Number & Percentage of Antigen Tests Positive for Respiratory Syncytial Virus (RSV) Health Service Region 6 (Gulf Coast/Houston), 2022-2023 Season



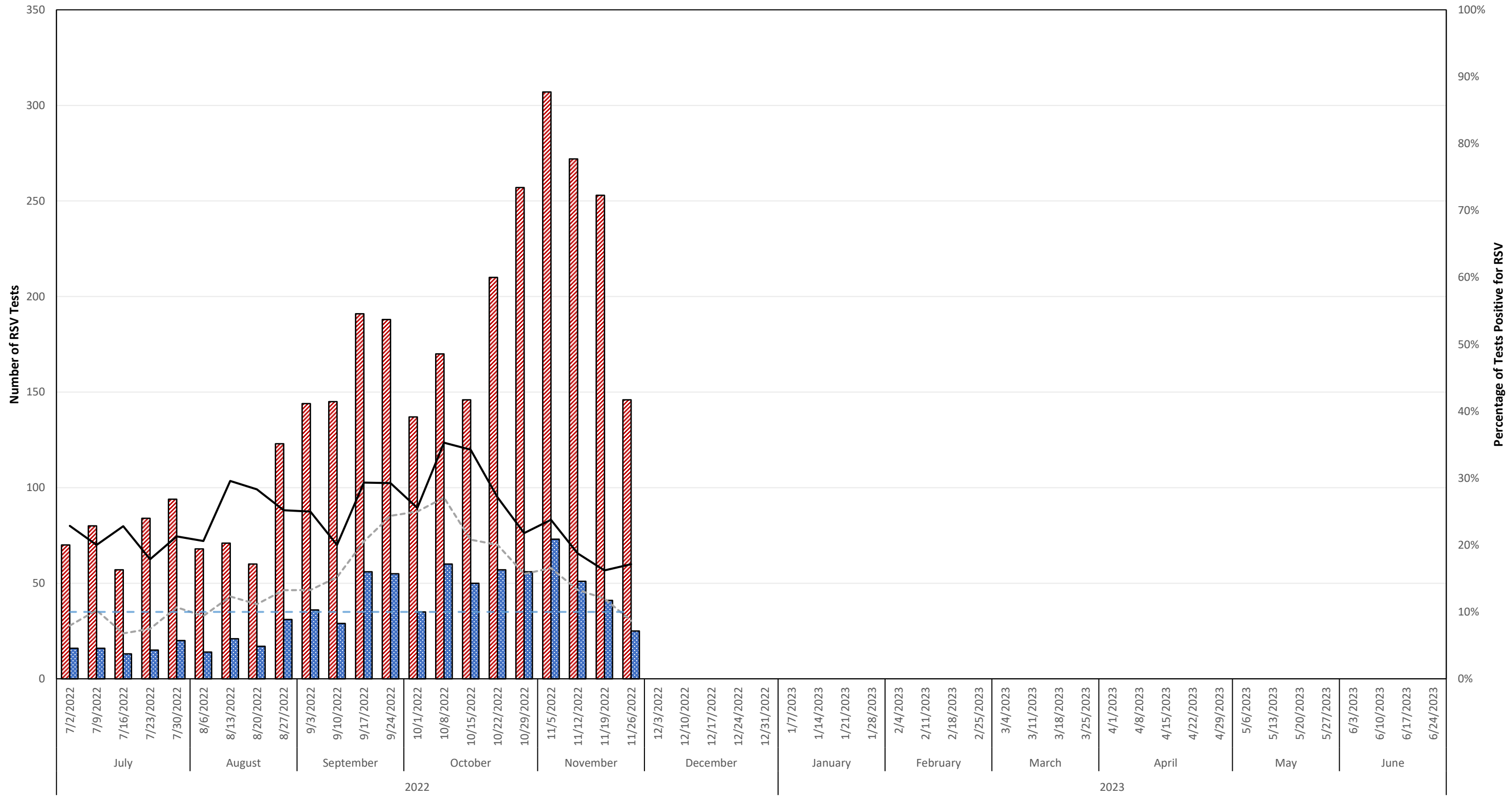
Total RSV Antigen Tests, HSR6
 Total RSV Positive Antigen Tests, HSR6
 — % Positive RSV Antigen Tests, HSR6
 — % Positive RSV Antigen Test, Texas
 — 10% Antigen Positiv Threshold

Number & Percentage of PCR Tests Positive for Respiratory Syncytial Virus (RSV) Health Service Region 6 (Gulf Coast/Houston), 2022-2023 Season



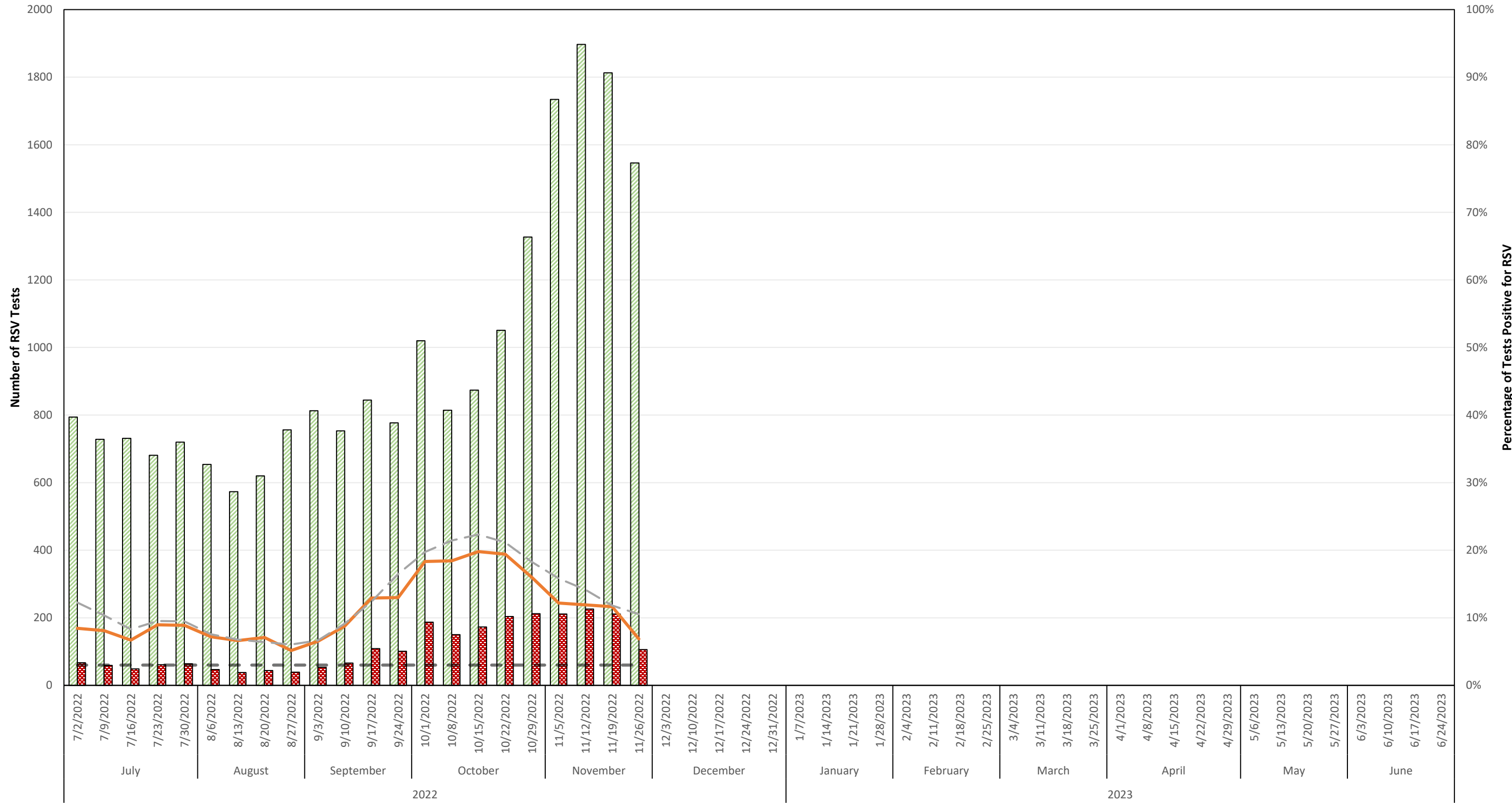
Total RSV PCR Tests, HSR6
 Total RSV Positive PCR Tests, HSR6
 % Positive RSV PCR Tests, HSR6
 % Positive RSV PCR Tests, Texas
 3% PCR Positive Threshold

Number & Percentage of Antigen Tests Positive for Respiratory Syncytial Virus (RSV) Health Service Region 7 (Central Texas), 2022-2023 Season



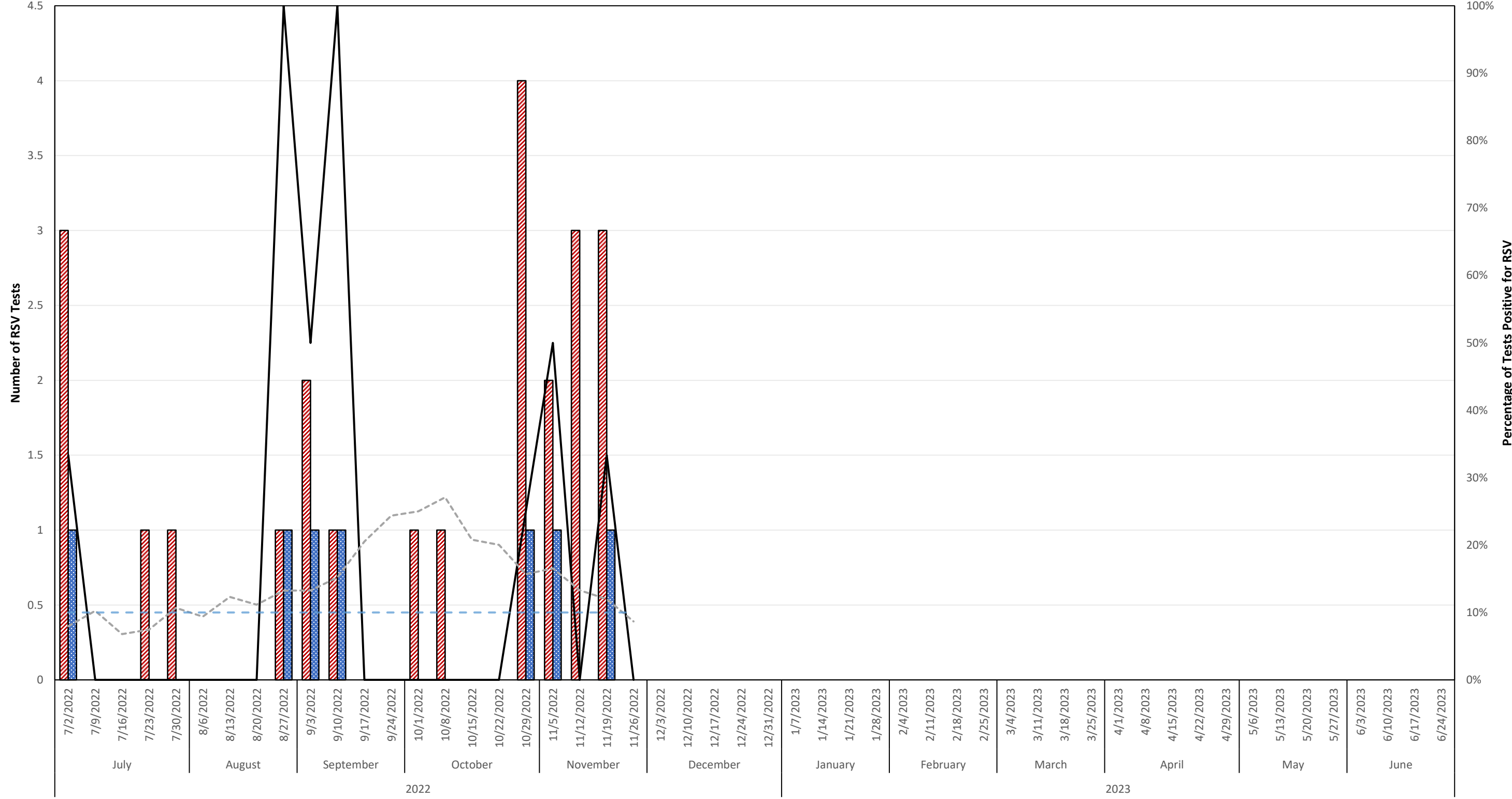
Total RSV Antigen Tests, HSR7
 Total RSV Positive Antigen Tests, HSR7
 % Positive RSV Antigen Tests, HSR7
 % Positive RSV Antigen Test, Texas
 10% Antigen Positiv Threshold

Number & Percentage of PCR Tests Positive for Respiratory Syncytial Virus (RSV) Health Service Region 7 (Central Texas), 2022-2023 Season



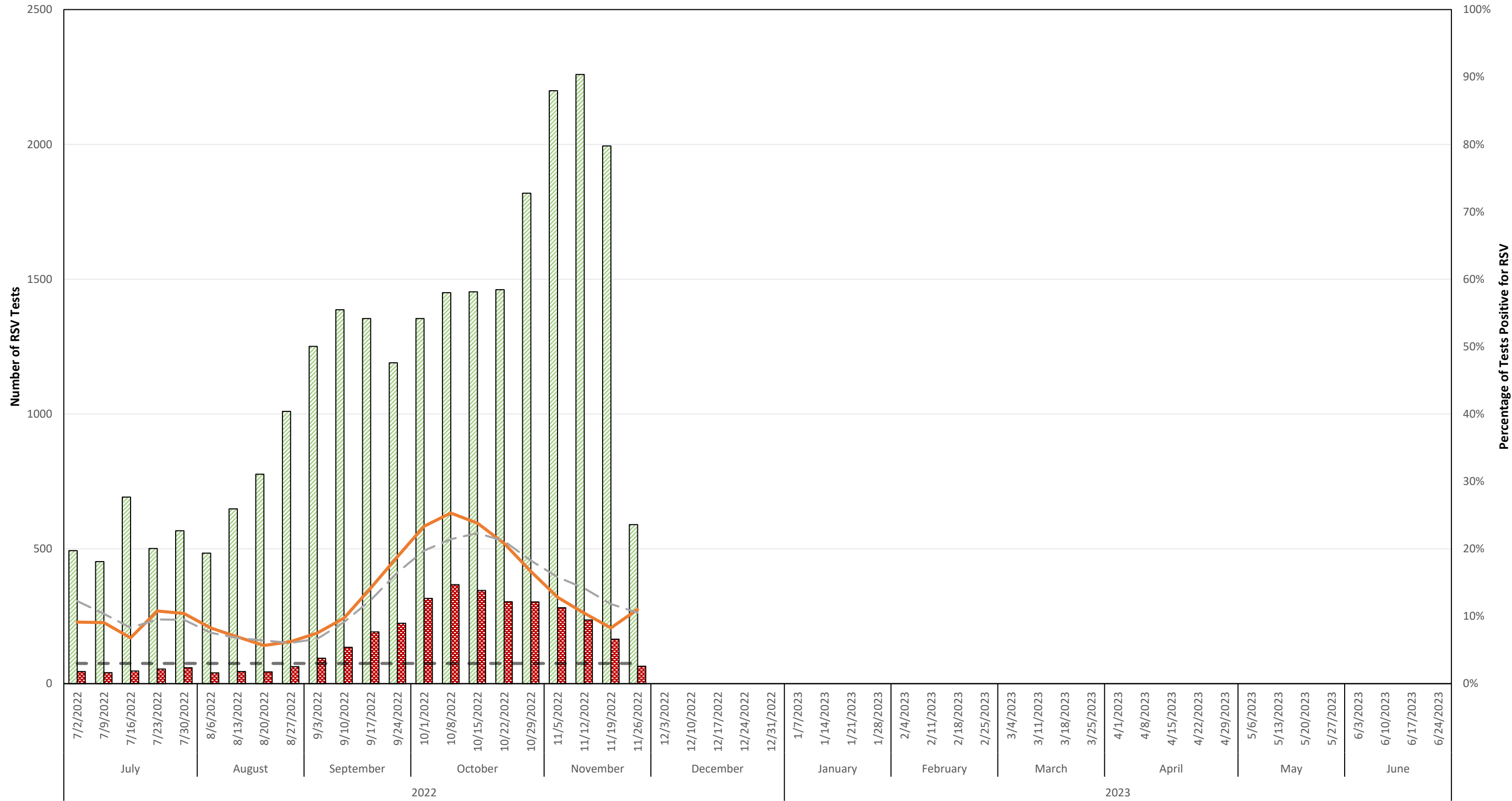
Total RSV PCR Tests, HSR7
 Total RSV Positive PCR Tests, HSR7
 % Positive RSV PCR Tests, HSR7
 % Positive RSV PCR Tests, Texas
 3% PCR Positive Threshold

Number & Percentage of Antigen Tests Positive for Respiratory Syncytial Virus (RSV) Health Service Region 8 (Upper South Texas), 2022-2023 Season



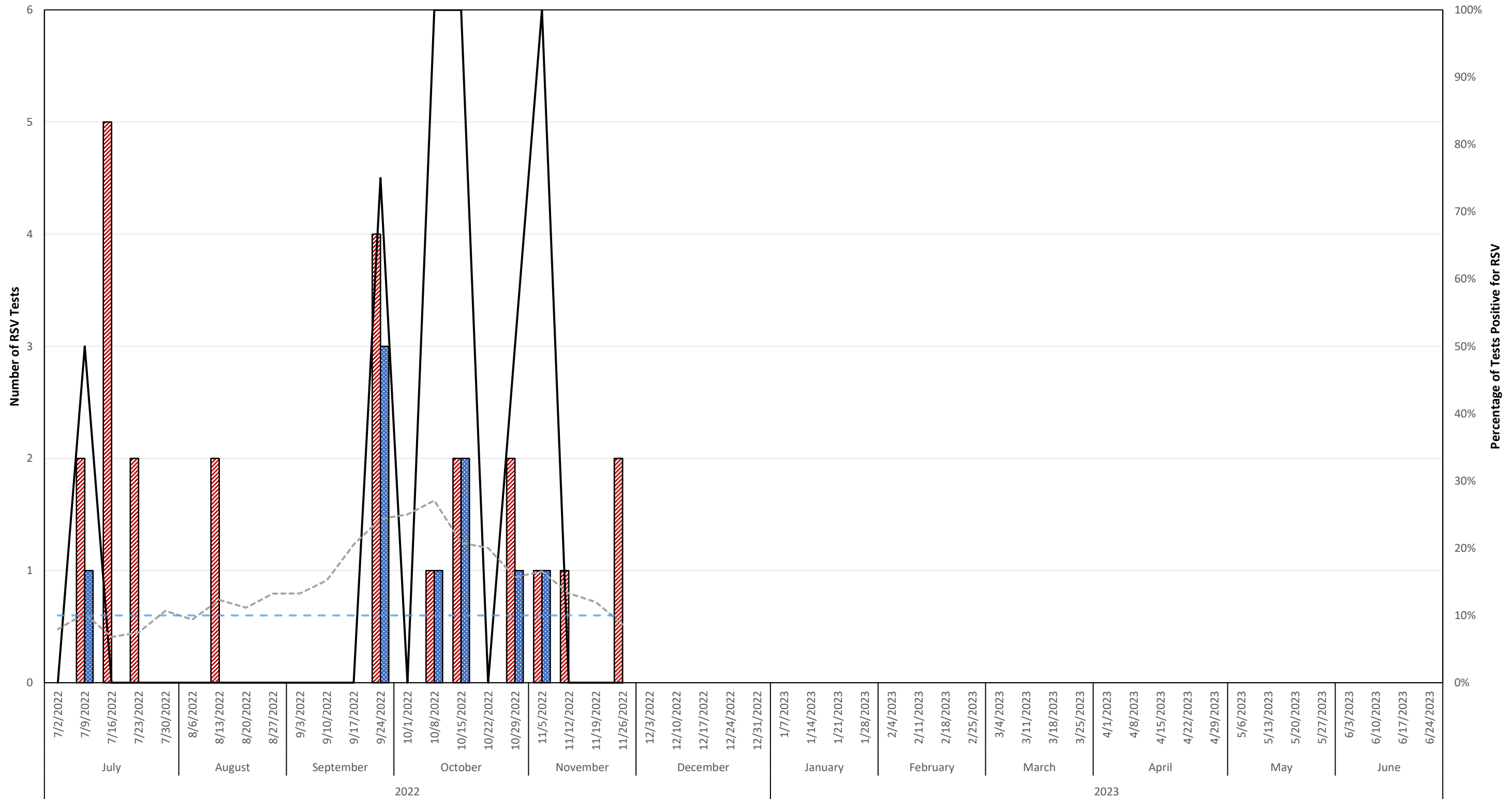
Total RSV Antigen Tests, HSR8
 Total RSV Positive Antigen Tests, HSR8
 ——— % Positive RSV Antigen Tests, HSR8
 - - - - % Positive RSV Antigen Test, Texas
 - - - - 10% Antigen Positiv Threshold

Number & Percentage of PCR Tests Positive for Respiratory Syncytial Virus (RSV) Health Service Region 8 (Upper South Texas), 2022-2023 Season



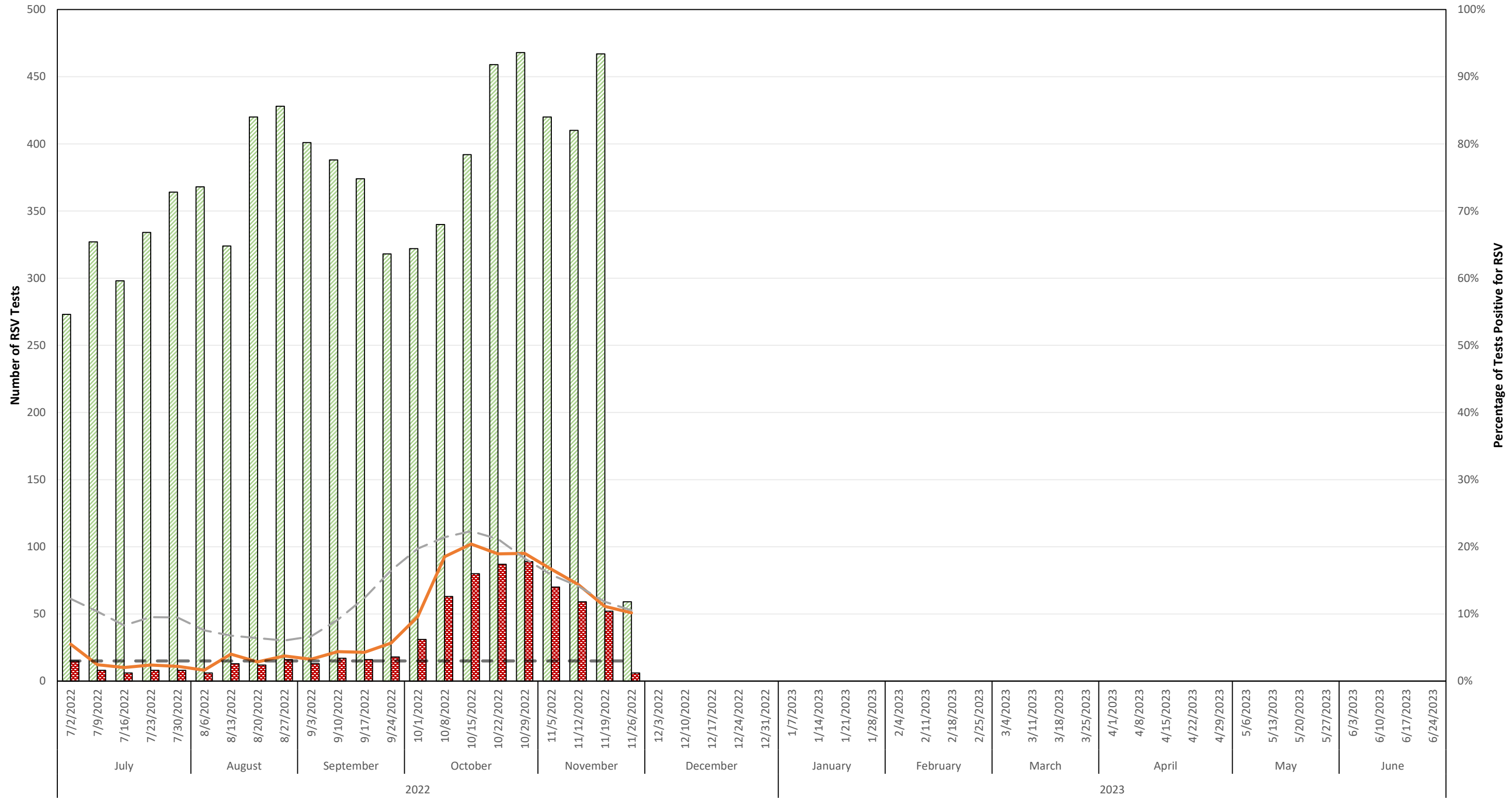
Total RSV PCR Tests, HSR8
 Total RSV Positive PCR Tests, HSR8
 % Positive RSV PCR Tests, HSR8
 % Positive RSV PCR Tests, Texas
 3% PCR Positive Threshold

Number & Percentage of Antigen Tests Positive for Respiratory Syncytial Virus (RSV) Health Service Region 9 (West Texas/Midland/Odessa), 2022-2023 Season



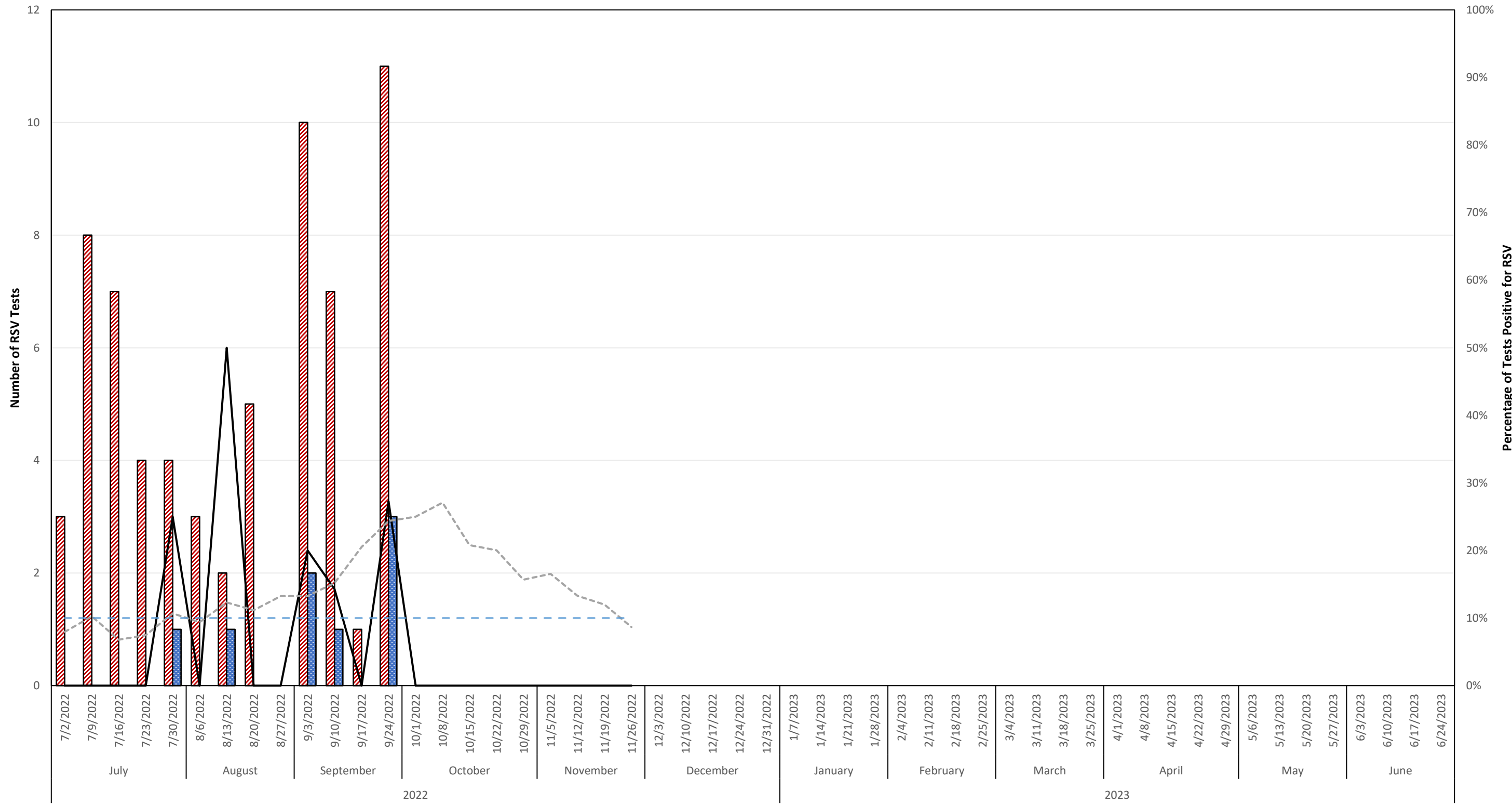
Total RSV Antigen Tests, HSR9
 Total RSV Positive Antigen Tests, HSR9
 % Positive RSV Antigen Tests, HSR9
 % Positive RSV Antigen Test, Texas
 10% Antigen Positiv Threshold

Number & Percentage of PCR Tests Positive for Respiratory Syncytial Virus (RSV) Health Service Region 9 (West Texas/Midland/Odessa), 2022-2023 Season



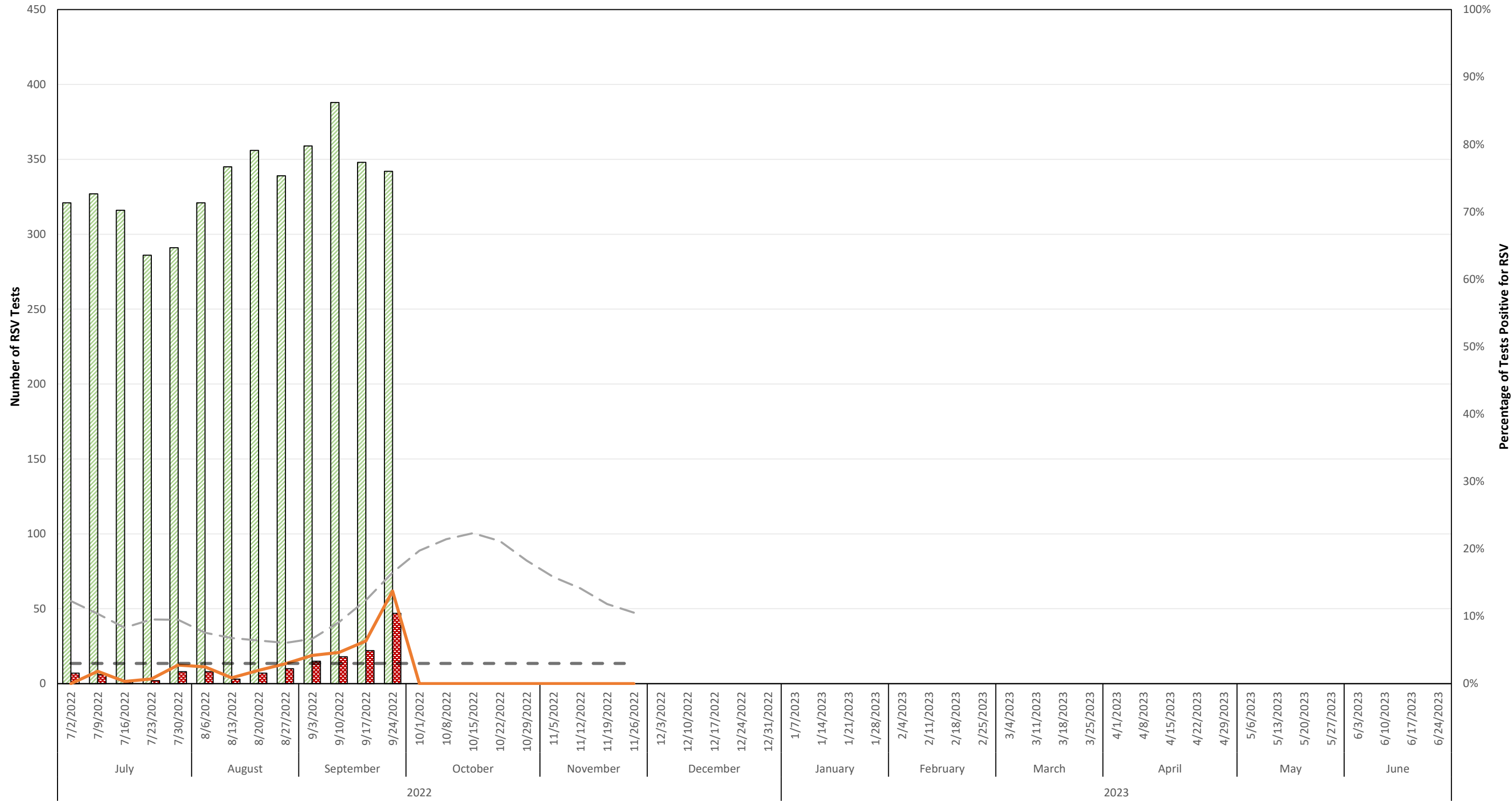
Total RSV PCR Tests, HSR9
 Total RSV Positive PCR Tests, HSR9
 % Positive RSV PCR Tests, HSR9
 % Positive RSV PCR Tests, Texas
 3% PCR Positive Threshold

Number & Percentage of Antigen Tests Positive for Respiratory Syncytial Virus (RSV) Health Service Region 10 (Upper Rio Grande/El Paso), 2022-2023 Season



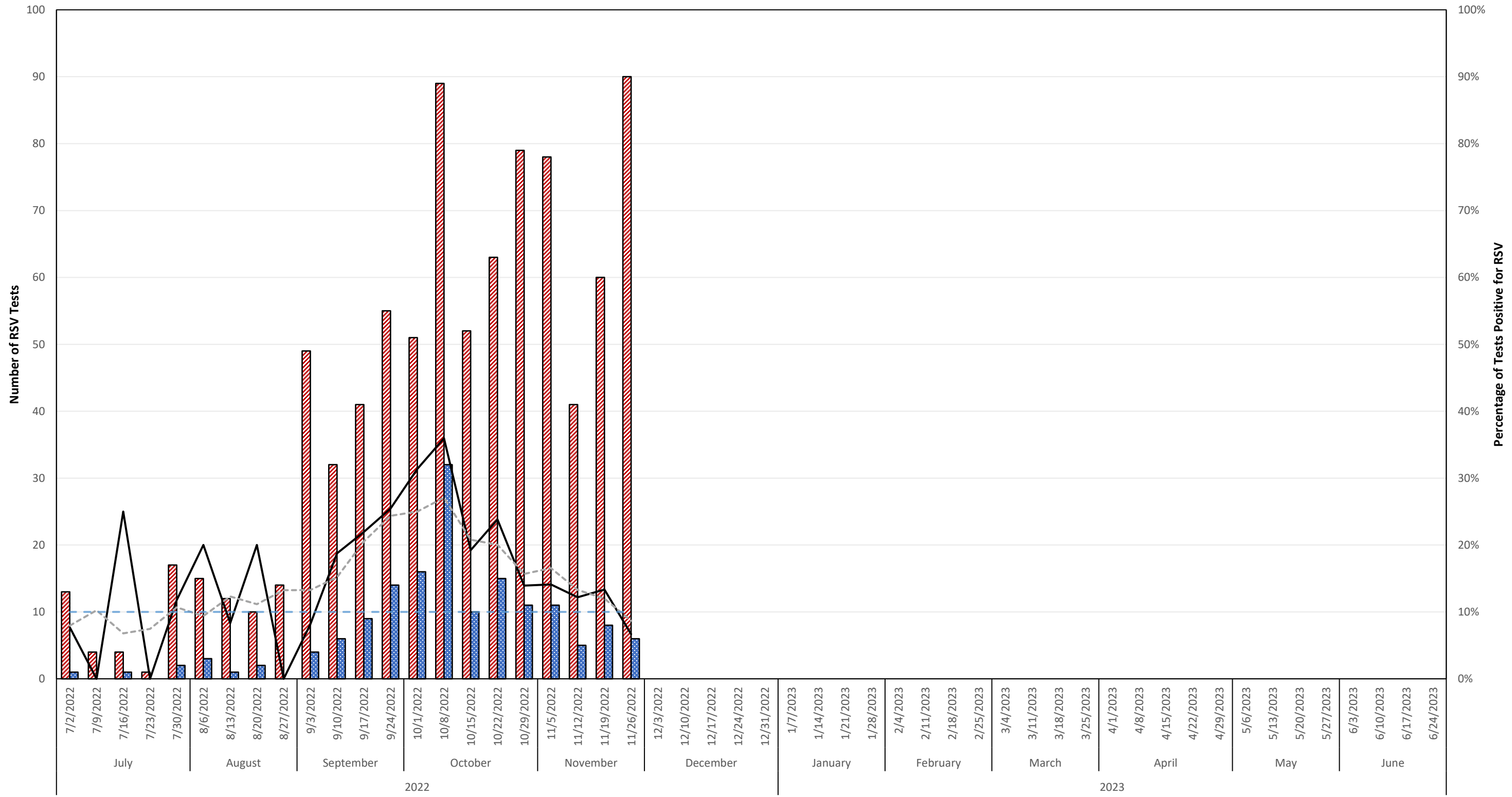
Total RSV Antigen Tests, HSR10
 Total RSV Positive Antigen Tests, HSR10
 % Positive RSV Antigen Tests, HSR10
 % Positive RSV Antigen Test, Texas
 10% Antigen Positiv Threshold

Number & Percentage of PCR Tests Positive for Respiratory Syncytial Virus (RSV) Health Service Region 10 (Upper Rio Grande/El Paso), 2022-2023 Season



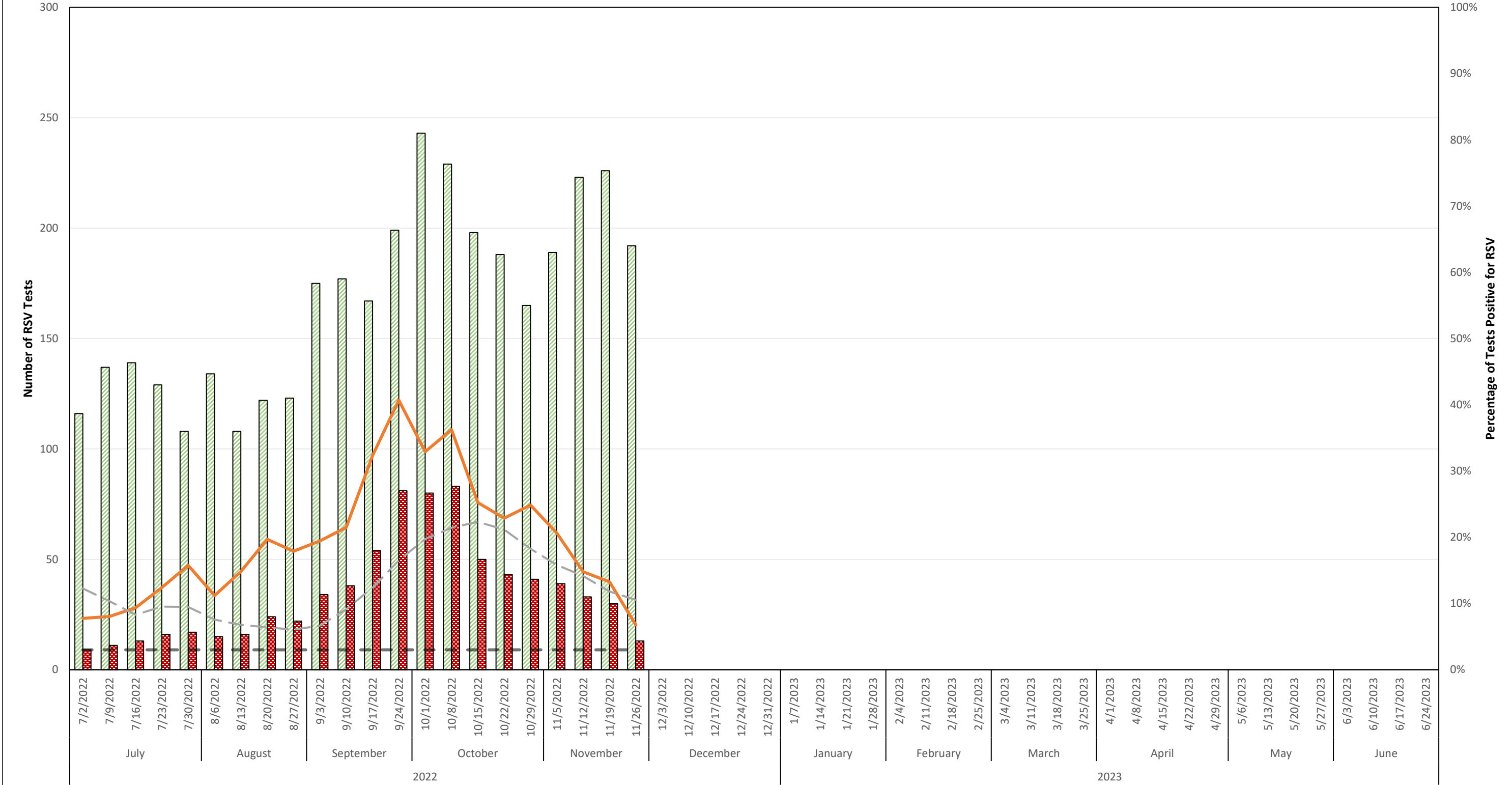
Total RSV PCR Tests, HSR910
 Total RSV Positive PCR Tests, HSR10
 % Positive RSV PCR Tests, HSR10
 % Positive RSV PCR Tests, Texas
 3% PCR Positive Threshold

Number & Percentage of Antigen Tests Positive for Respiratory Syncytial Virus (RSV) Health Service Region 11 (Lower South Texas), 2022-2023 Season



Total RSV Antigen Tests, HSR11
 Total RSV Positive Antigen Tests, HSR11
 % Positive RSV Antigen Tests, HSR11
 % Positive RSV Antigen Test, Texas
 10% Antigen Positiv Threshold

Number & Percentage of PCR Tests Positive for Respiratory Syncytial Virus (RSV) Health Service Region 11 (Lower South Texas), 2022-2023 Season



Total RSV PCR Tests, HSR911
 Total RSV Positive PCR Tests, HSR11
 % Positive RSV PCR Tests, HSR11
 % Positive RSV PCR Tests, Texas
 3% PCR Positive Threshold

Texas Weekly RSV Report

Reporting information and data caveats

The start of RSV season is the first of two consecutive weeks with $\geq 10\%$ of tests positive, and the end is the last of two consecutive weeks with $\geq 10\%$ of tests positive.

“The percentage of positive detections reflects test ordering practices and might not directly reflect disease burden.” *Centers for Disease Control and Prevention. Respiratory Syncytial Virus-United States, July 2007-June 2011. Morbidity and Mortality Weekly Report (MMWR). September 2011; 60 (35):1203-1206.*

National and state RSV analyses typically rely on antigen test data, however PCR testing is also becoming more common.

Regional-level results may not be reliable if the number of RSV tests performed each week is small or if reporting is inconsistent.

RSV is not a notifiable condition in Texas. Sentinel laboratories voluntarily enter their RSV data weekly into the CDC National Respiratory and Enteric Virus Surveillance System (NREVSS), and these data are compiled to create the Texas Weekly RSV Report.