

## Texas Influenza Surveillance Report 2023-2024 Season/ 2023 MMWR Week 52

(December 24, 2023 – December 30, 2023)  
Report produced on 1/5/2024

### Summary

\*This report excludes COVID-19 data. For information about COVID-19 in Texas, please visit [www.dshs.texas.gov/covid-19-home](http://www.dshs.texas.gov/covid-19-home).

Compared to the previous week, the percentage of specimens testing positive for influenza reported by hospital laboratories has decreased. The percentage of patient visits due to influenza-like illness (ILI) has decreased. No influenza associated pediatric deaths were reported. One influenza-associated institutional outbreak was reported in a long-term care facility.

Table 1: Summary of Texas Influenza (Flu) and Influenza-like Illness (ILI) Activity for the Current Week

Texas Surveillance Component	Change from Previous Week	Current Week	Previous Week <sup>†</sup>	Page of Report
Statewide ILINet Activity Indicator assigned by CDC (intensity of influenza-like illness)	Increase	Very High	High	-
Percentage of specimens positive for influenza by hospital laboratories	▼ 2.21%	22.67%	24.88%	1
Percentage of visits due to ILI (ILINet)	▼ 0.98%	7.37%	8.35%	4
Number of regions reporting increased flu/ILI activity	No change	4	4	6
Number of regions reporting decreased flu/ILI activity	No change	4	4	6
Number of variant/novel influenza infections	No change	0	0	6
Number of ILI/influenza outbreaks	▼ 3	1	4	6
Number of pediatric influenza deaths	▼ 1	0	1	7

<sup>†</sup>Data displayed have been updated since last week's flu report with any new reports received.

### Laboratory Results

#### Influenza

Hospital laboratories across Texas voluntarily report influenza tests (antigen, culture, and PCR) to the National Respiratory and Enteric Virus Surveillance System (NREVSS). Providers throughout Texas also submit specimens for influenza testing (PCR) to Texas public health laboratories, including the Texas Department of State Health Services (DSHS) state laboratory in Austin and the nine Texas Laboratory Response Network (LRN) laboratories. The results reported by Texas NREVSS participants and public health laboratories for the current week are summarized in the two tables below. Additional influenza test results (rapid tests, culture, PCR) and ILI activity were reported from providers and public health departments throughout the state (see county map at the end of this report).

Table 2: Influenza Testing Performed by Texas Hospital Laboratories for the Current Week

	Week 52	Season to Date Week Ending: December 30, 2023
Number of labs reporting flu tests	17	
Number of specimens tested	10326	115641
Number of positive specimens (%)	<b>2341 (22.67%)</b>	<b>13855 (11.98%)</b>
Percentage of total tests that were antigen detection tests	28.29%	
<b>Positive specimens by type/subtype [n (%)]</b>		
<b>Influenza A</b>	<b>1539 (65.74%)</b>	<b>8471 (61.14%)</b>
Subtyping performed	161 (10.46%)	1082 (12.77%)
A (H1N1)	136 (84.47%)	950 (87.80%)
A (H3N2)	25 (15.53%)	132 (12.20%)
Subtyping not performed	1378 (89.54%)	7389 (87.23%)
<b>Influenza B</b>	<b>802 (34.26%)</b>	<b>5384 (38.86%)</b>

Figure 1: Number and Percentage of Tests (Antigen, Culture, PCR) Positive for Influenza by Type and Subtype Reported by Texas Hospital Laboratories, 2023-2024 Season

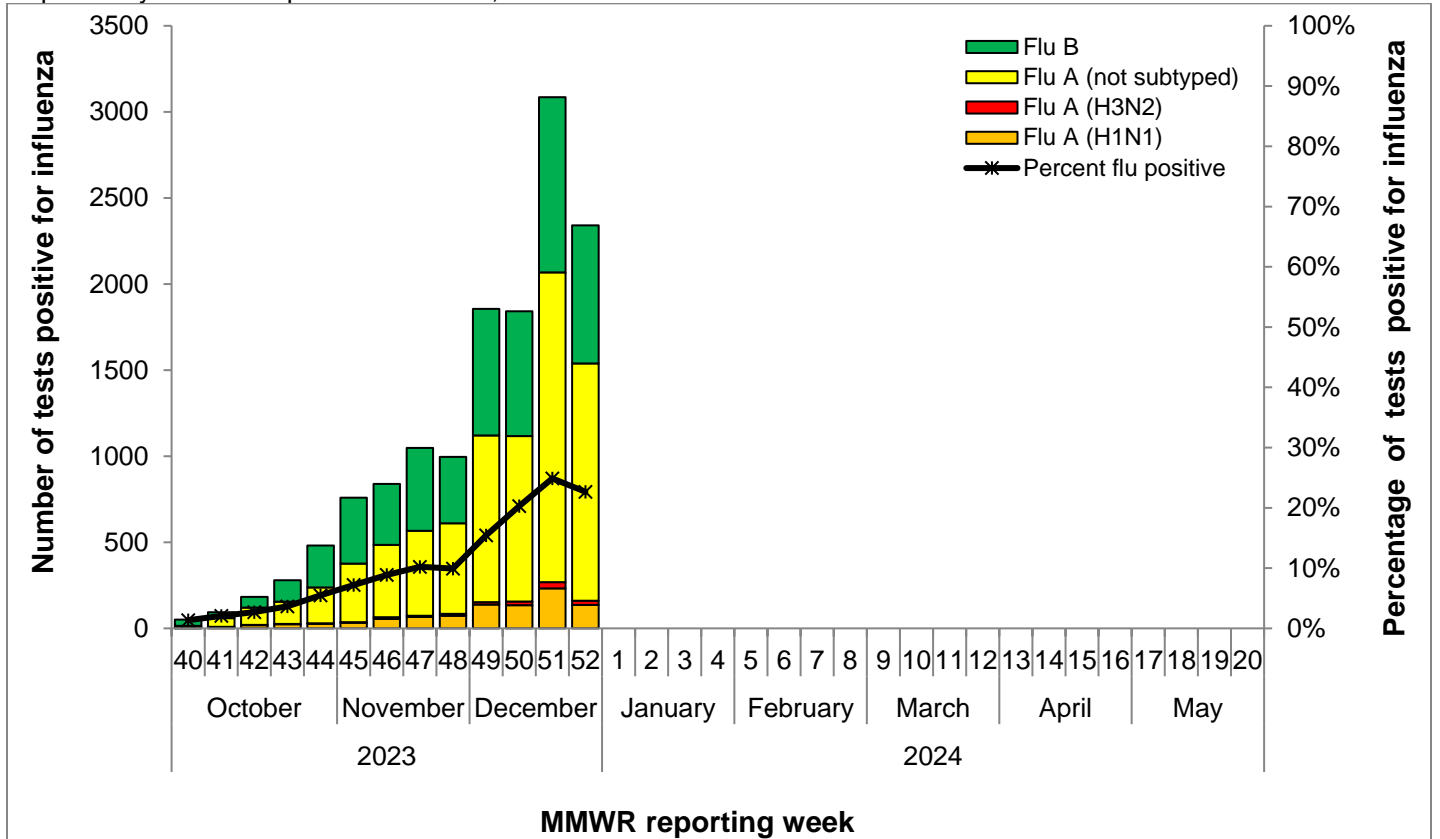
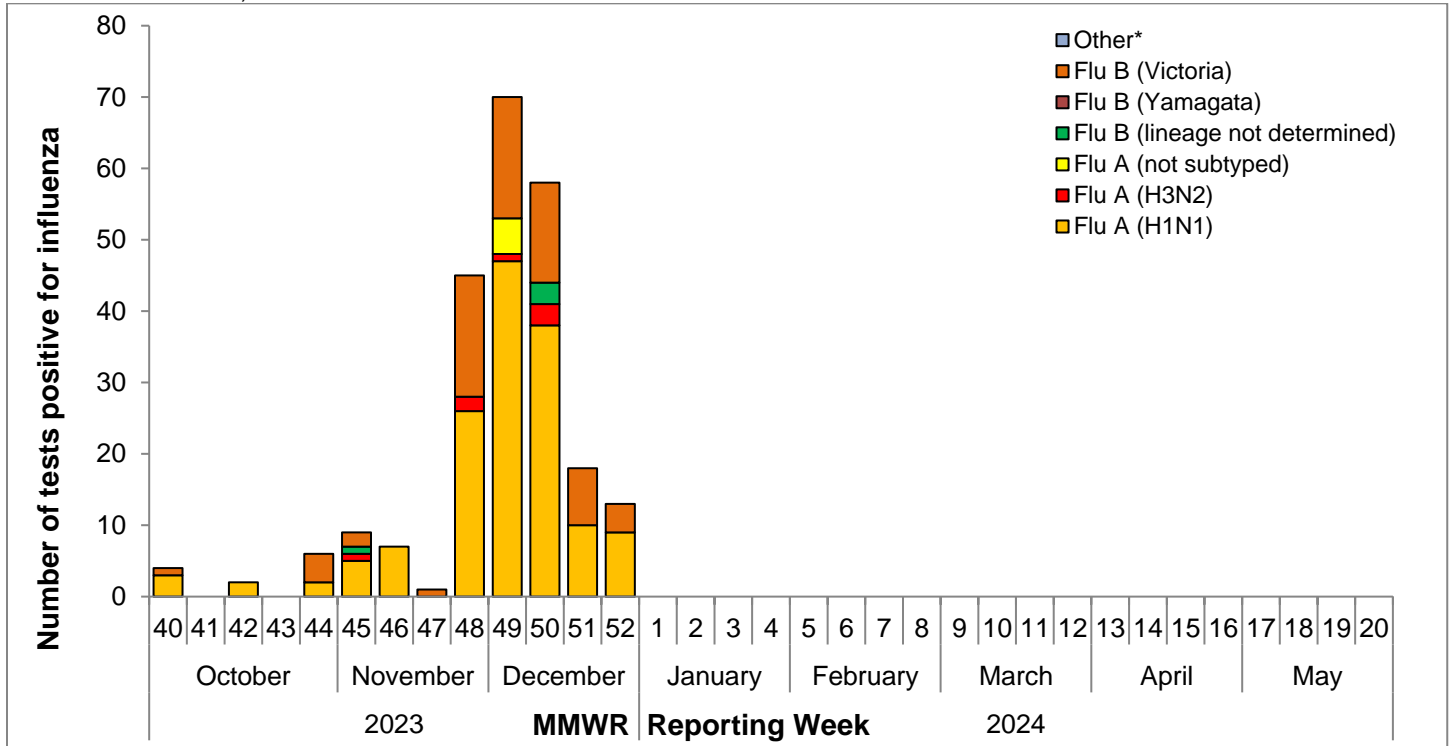


Table 3: Influenza Testing Performed by Texas Public Health Laboratories for the Current Week

	Week 52	Season to Date Week Ending: December 30, 2023
Number of labs reporting flu tests	2	
Number of specimens tested	13	742
Number of positive specimens (%)	13 (100.00%)	233 (31.40%)
<b>Positive specimens by type/subtype/lineage [n (%)]</b>		
<b>Influenza A</b>	<b>9 (69.23%)</b>	<b>161 (69.10%)</b>
Subtyping performed	9 (100.00%)	156 (96.89%)
A (H1N1)	9 (100.00%)	149 (95.51%)
A (H3N2)	0 (0.00%)	7 (4.49%)
Subtyping not performed	0 (0.00%)	5 (3.11%)
<b>Influenza B</b>	<b>4 (30.77%)</b>	<b>72 (30.90%)</b>
Lineage testing performed	4 (100.00%)	68 (94.44%)
B/Victoria	4 (100.00%)	68 (100.00%)
B/Yamagata	0 (0.00%)	0 (0.00%)
Lineage testing not performed	0 (0.00%)	4 (5.56%)
<b>Other*</b>	<b>0 (0.00%)</b>	<b>0 (0.00%)</b>

\*Other denotes specimens with coinfections (i.e. one specimen was positive for both influenza A (H1N1) and influenza A (H3N2))

Figure 2: Number of Tests (PCR) Positive for Influenza by Type, Subtype, and Lineage Reported by Texas Public Health Laboratories, 2023-2024 Season



\*Other denotes specimens with coinfections (i.e. one specimen was positive for both influenza A (H1N1) and influenza A (H3N2))

#### Other Respiratory Viruses

The NREVSS system collects information on a variety of respiratory viruses in addition to influenza including parainfluenza virus, respiratory syncytial virus (RSV), rhinovirus, human metapneumovirus (HMPV), seasonal coronavirus, and respiratory adenovirus. The results for the current week are summarized below.

Table 4: Non-Influenza Respiratory Virus Testing Performed by Texas NREVSS Laboratories for the Current Week

Virus	Number of Laboratories Testing	Tests Performed	Positive Tests	Percentage of Tests Positive
Adenovirus (respiratory)	13	2588	94	3.63%
HMPV	13	2589	85	3.28%
Parainfluenza virus	13	2589	134	5.18%
Rhino/enterovirus	13	2742	616	22.47%
RSV <sup>†</sup>	16	6432	690	10.73%
Seasonal coronavirus (does not include MERS-CoV or COVID-19)	13	2589	181	6.99%

<sup>†</sup> RSV tests displayed in the table are a combination of antigen detection, PCR, and culture tests. Some non-NREVSS reporters also contribute to the RSV data.

<sup>^</sup> Numbers and percentage may differ from the weekly RSV report. The weekly RSV report may be accessed at <https://www.dshs.state.tx.us/RSV/disease/rsv-Data.aspx>.

#### Antigenic Characterization

No antigenic characterization data for Texas specimens are currently available. The DSHS Laboratory sends a representative sample of influenza viruses to the CDC throughout the flu season.

#### Antiviral Resistance

No antiviral resistance testing data for Texas specimens are available presently.

## U.S. Outpatient Influenza-like Illness Surveillance Network (ILINet)

Table 5: Texas ILINet Reporting and Patient Visit Summary for the Current Week

	Week 52
Number of providers reporting	46
Number of providers reporting patient visits	44
Number (%) of providers with at least one ILI case	38 (86.4%)
Percentage of all visits due to ILI	7.37%
Texas ILINet baseline <sup>‡</sup> , 2023-2024	4.32%

<sup>‡</sup>The baseline is the mean percentage of patient visits for ILI during non-influenza weeks for the previous three seasons plus two standard deviations. A "non-influenza week" is defined as a week that accounted for less than 2% of the season's total number of specimens that tested positive for influenza

**Special Note:** The case definition was changed to capture respiratory pathogens causing illness, including CoVID-19, through the ILINet. The Influenza-like Illness (ILI) case definition is a patient with fever ( $\geq 100^{\circ}\text{F}$ ,  $37.8^{\circ}\text{C}$ ) AND cough and/or sore throat. There is no longer a restriction on the cause.

Table 6: Percentage of Visits for Influenza-like Illness Reported by Texas ILINet Providers (as of 1/4/2024 9:10AM)

Week	Providers Reporting	Number of ILI Cases by Age Group (Years)					Total ILI (all ages)	Total Patients	% ILI
		0-4	5-24	25-49	50-64	65+			
202340	51	343	835	360	104	70	1712	53613	3.19%
202341	52	391	832	301	114	77	1715	53193	3.22%
202342	52	455	991	374	131	82	2033	54875	3.70%
202343	53	502	1127	400	112	97	2238	55666	4.02%
202344	53	491	1209	343	105	84	2232	50967	4.38%
202345	53	631	1512	486	157	109	2895	51463	5.63%
202346	53	729	1732	526	171	112	3270	54791	5.97%
202347	54	540	1127	542	224	128	2561	41588	6.16%
202348	37	455	1274	675	252	147	2803	46522	6.03%
202349	36	465	1455	624	261	143	2948	46878	6.29%
202350	51	564	1837	695	295	161	3552	49242	7.21%
202351	34	582	1865	1016	362	224	4049	48519	8.35%
202352	46	167	673	823	338	1296	3297	44744	7.37%

Figure 3: Percentage of Visits Due to Influenza-like Illness Reported by Texas ILINet Participants, 2023-2024 Season

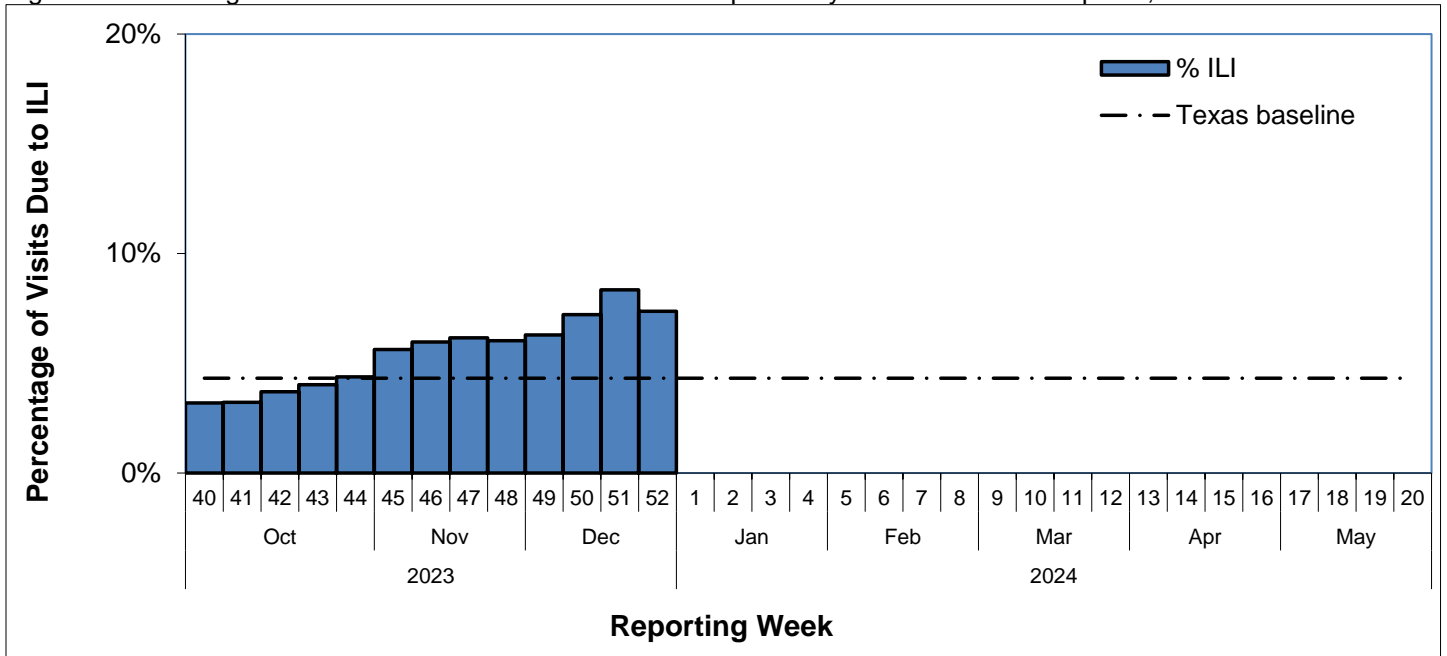
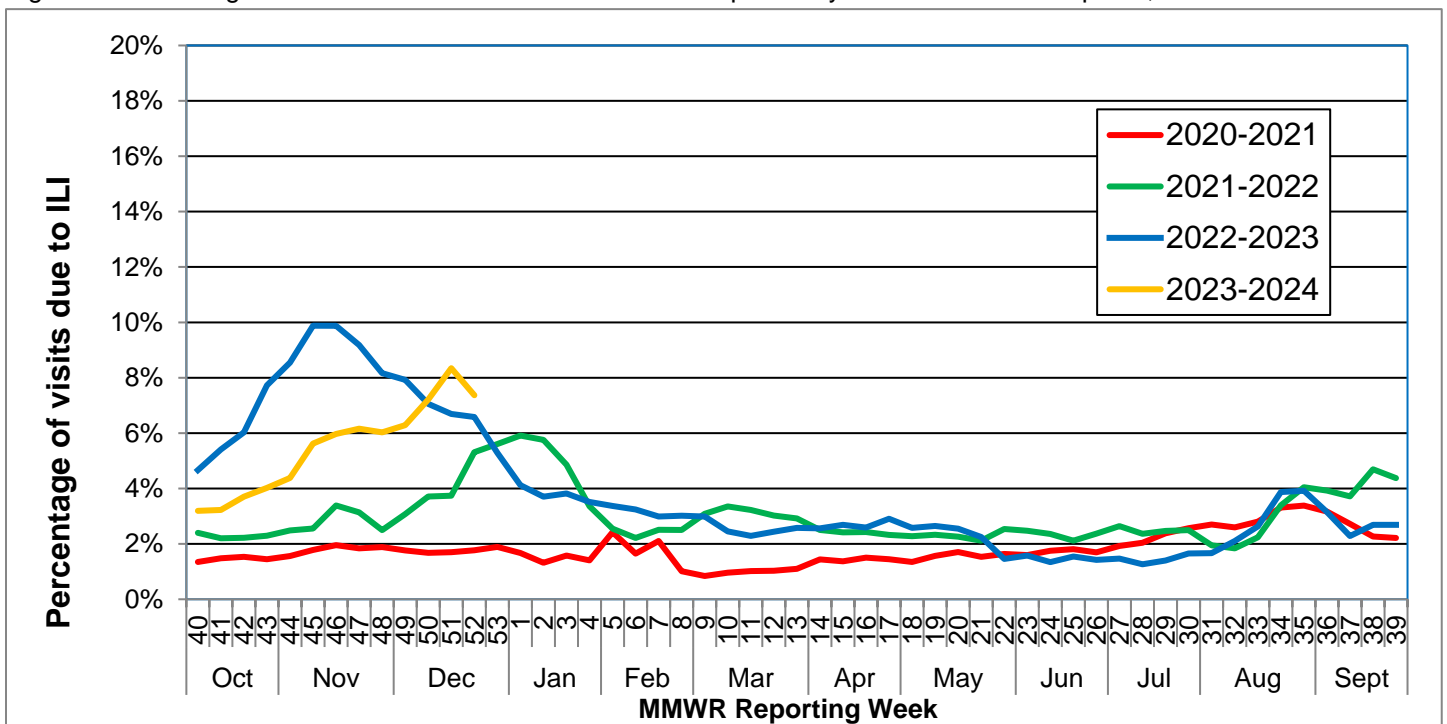


Figure 4: Percentage of Visits Due to Influenza-like Illness Reported by Texas ILINet Participants, 2020–2024 Seasons



Note: The 2020-2021 Flu Season contains MMWR week 202053. For graphical display compatibility with seasons containing 52 weeks, average values were generated using MMWR week 52 and 1.

## Reports from Health Service Regions

Reports were received from all Health Service Regions (HSRs) during week 52.

Table 7: Influenza Activity compared to week 51 by Health Service Region (HSR)

Influenza Activity Comparison	
Increased	1, 4/5N, 6/5S, 9/10
Same	
Decreased	2/3, 7, 8, 11
Unsure	

## Variant Influenza Viruses

No variant or novel influenza viruses have been detected in Texas during the 2023-2024 season.

## Institutional Outbreaks and School Closures

One respiratory disease outbreak was reported for week 52.

The outbreak was reported from a long-term care facility (LTCF) located in health service region 2/3. Testing has identified the outbreak as an influenza outbreak with no typing information currently available. Outbreak currently consists of two confirmed cases. The local health jurisdiction remains in contact with the facility to provide support and guidance when necessary.

## P&I Mortality Surveillance Data

\*Deaths due to COVID-19 may be classified as pneumonia deaths or influenza deaths (deaths due to “flu” or “flu-like illness”) in the absence of positive SARS-CoV-2 test results. Pneumonia and influenza (P&I) death data are obtained from death certificates of Texas residents whose underlying or contributing cause(s) of death is reported as pneumonia or influenza. P&I deaths are identified based on ICD-10 multiple cause of death codes. P&I deaths are based on ICD-10 pneumonia and influenza mortality codes.

Two thousand, one hundred and three (2103) P&I deaths have been reported in Texas during the 2023-2024 influenza season.

Table 8: Texas P&I Deaths Occurring October 1, 2023– December 30, 2023\* by Age

Age Category (years)	Number of P&I Deaths <sup>+</sup>	Mortality Rate (per 100,000)
0 - 4	<10	-
5 - 17	<10	-
18 - 49	120	0.86
50 - 64	355	6.7
65 +	1618	35.35
Overall	2103	6.64

\*NOTE: Data are provisional and subject to change, errors, and duplicates  
+ If the cell count is less than 10, the number of P&I deaths is suppressed and <10 is written in the cell.

Table 9: Texas P&I Deaths Occurring October 1, 2023– December 30, 2023\* by Health Service Region (HSR)

HSR	Number of P&I Deaths <sup>+</sup>	Mortality Rate (per 100,000)
1	59	6.37
2/3	569	6.16
4/5N	170	10.9
6/5S	510	5.92
7	254	6.55
8	217	6.44
9/10	114	6.65
11	210	8.79
Unknown	-	-
Overall	2103	6.64

\*NOTE: Data are provisional and subject to change, errors, and duplicates  
+ If the cell count is less than 10, the number of P&I deaths is suppressed and <10 is written in the cell.

## Influenza-Associated Pediatric Mortality

No influenza-associated pediatric mortalities were reported in week 52.

One influenza-associated pediatric mortality has been reported in Texas during the 2023-2024 influenza season. Cases of influenza-associated pediatric mortality (children <18 years of age) are reportable year-round by law in Texas.

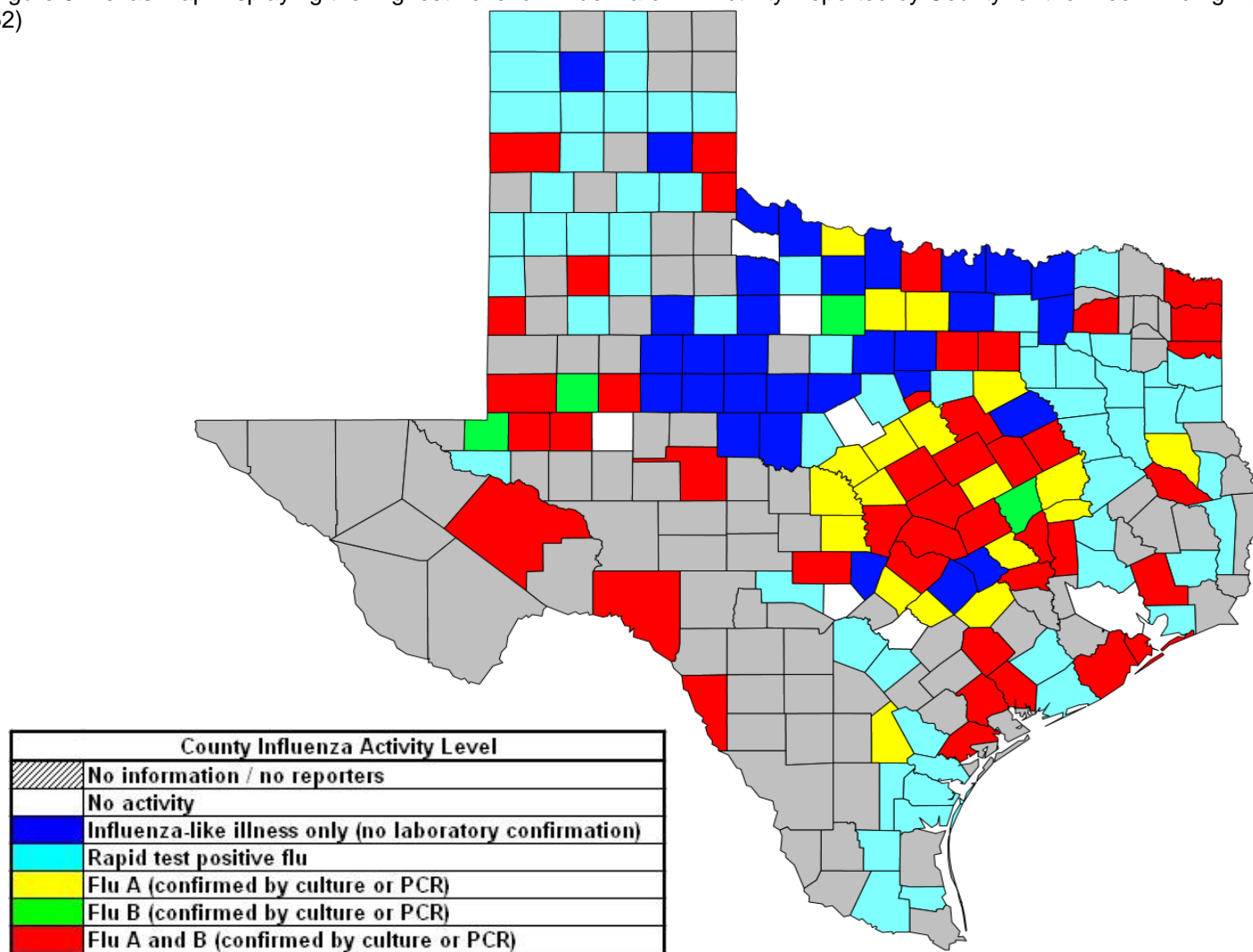
Table 10: Influenza-Associated Pediatric Deaths Reported in Texas during the 2023-2024 Season

Month of Pediatric Death	Influenza A (H1N1)	Influenza A (H3N2)	Influenza A (Not Subtyped)	Influenza B	Influenza, Not Typed / Not Differentiated	Influenza virus co-infection: A (not subtyped) and B	Total, All Influenza Types / Subtypes
<b>2023</b>							
October	0	0	0	0	0	0	0
November	0	0	0	0	0	0	0
December	0	0	0	1	0	0	1
<b>Total*</b>	<b>0</b>	<b>0</b>	<b>0</b>	<b>1</b>	<b>0</b>	<b>0</b>	<b>1</b>

\*Total count of typed cases may be adjusted as lab testing and case investigation is completed, this does not alter total count of all cases (final column).

## Statewide Influenza Activity Map

Figure 5: Texas Map Displaying the Highest Level of Influenza or ILI Activity Reported by County for the Week Ending December 30, 2023 (MMWR Week 52)



Please note: The majority of influenza cases are not reportable by law in Texas. This map contains data from sentinel sites and only displays influenza and ILI cases that were reported to public health. Positive laboratory results are reported according to specimen collection date, or date received in the laboratory if the former is unknown.



# Texas Influenza Surveillance Components and Measures

Activity codes (see <http://www.cdc.gov/flu/weekly/overview.htm>)

Statewide influenza activity level

A code reported weekly by states and territories to CDC indicating the geographic spread of influenza in the state. Levels are no activity, sporadic, local, regional, and widespread.

ILINet Activity Indicator

A statewide level of influenza-like illness intensity (on a scale of 1-10, with 1 being the lowest level) assigned to each state weekly by CDC based on data reported through ILINet.

## Morbidity

Novel/variant influenza

Thorough investigations are performed on all cases of novel/variant influenza. *This condition is reportable by law in Texas.*

Texas ILINet

Providers voluntarily report weekly to CDC's ILINet system on the number of outpatient visits for ILI and total outpatient visits. Providers may submit up to 5 specimens per month for influenza testing. See <http://www.dshs.state.tx.us/idcu/disease/influenza/surveillance/ILINet/> for information on how to become an ILINet provider.

ILI activity

Non-ILINet providers report ILI or influenza data weekly to local or regional health departments.

Outbreaks

Healthcare, schools, childcare, and correctional facilities report ILI and influenza outbreaks to health departments in Texas. *This condition is reportable by law in Texas.*

## Mortality

Pneumonia and Influenza (P&I) Mortality Surveillance

The DSHS Vital Statistics Unit collects death certificate information for all deaths on Texas residents from various partners such as funeral homes and local registrars around the state. The death certificates are then sent to the National Center for Health Statistics (NCHS) where the cause of death and underlying causes of death on the death certificates are coded with ICD-10 mortality codes. Once death certificates are coded, the information is sent back to DSHS Center for Health Statistics (CHS). CHS produces a Weekly Pneumonia and Influenza (P&I) Death Report and sends it to the State Influenza Surveillance Coordinator for inclusion in the Texas Weekly Flu Report. P&I deaths are identified based on ICD-10 multiple cause of death codes, and in particular, pneumonia and influenza mortality codes. Delays inherent in death reporting and coding practices may cause the number of reported P&I deaths to vary considerably each week.

Influenza-associated pediatric deaths

Deaths that are associated with influenza in children < 18 years of age are reported to health departments in Texas. *This condition is reportable by law in Texas.* <http://www.dshs.state.tx.us/idcu/disease/IAPM/>

## Laboratory

DSHS Austin laboratory

Providers voluntarily submit specimens to the DSHS Austin laboratory for influenza PCR testing throughout the season. Providers sign up for this program through their local health departments.

Laboratory Response Network (LRN) laboratories

Providers voluntarily submit specimens to one of the 9 Texas LRNs for influenza PCR testing throughout the season. Providers sign up for this program through their local health departments.

NREVSS

Laboratories voluntarily report influenza and other respiratory virus data weekly through the CDC's online NREVSS reporting system. **Laboratories sign up for this program by contacting DSHS.** <http://www.cdc.gov/surveillance/nrevss/>

## **Recommended Resources**

*Texas Department of State Health Services*

DSHS influenza page: <http://www.texasflu.org/>

Influenza surveillance data and reports: <http://www.dshs.state.tx.us/idcu/disease/influenza/surveillance/>

Map of Texas Health Service Regions: <http://www.dshs.state.tx.us/regions/state.shtm>

*Centers for Disease Control and Prevention*

National FluView weekly flu report: <http://www.cdc.gov/flu/weekly/>

Variant influenza viruses: <http://www.cdc.gov/flu/swineflu/variant.htm>

Avian influenza viruses: <http://www.cdc.gov/flu/avianflu/index.htm>

Swine influenza viruses: <http://www.cdc.gov/flu/swineflu/index.htm>

Infection Control in Healthcare Facilities: <http://www.cdc.gov/flu/professionals/infectioncontrol/>

Seasonal Flu Information for Schools and Childcare Providers: <http://www.cdc.gov/flu/school/index.htm>

*World Health Organization*

Influenza page: <http://www.who.int/topics/influenza/en/>

Disease Outbreak News: <http://www.who.int/csr/don/en/>