

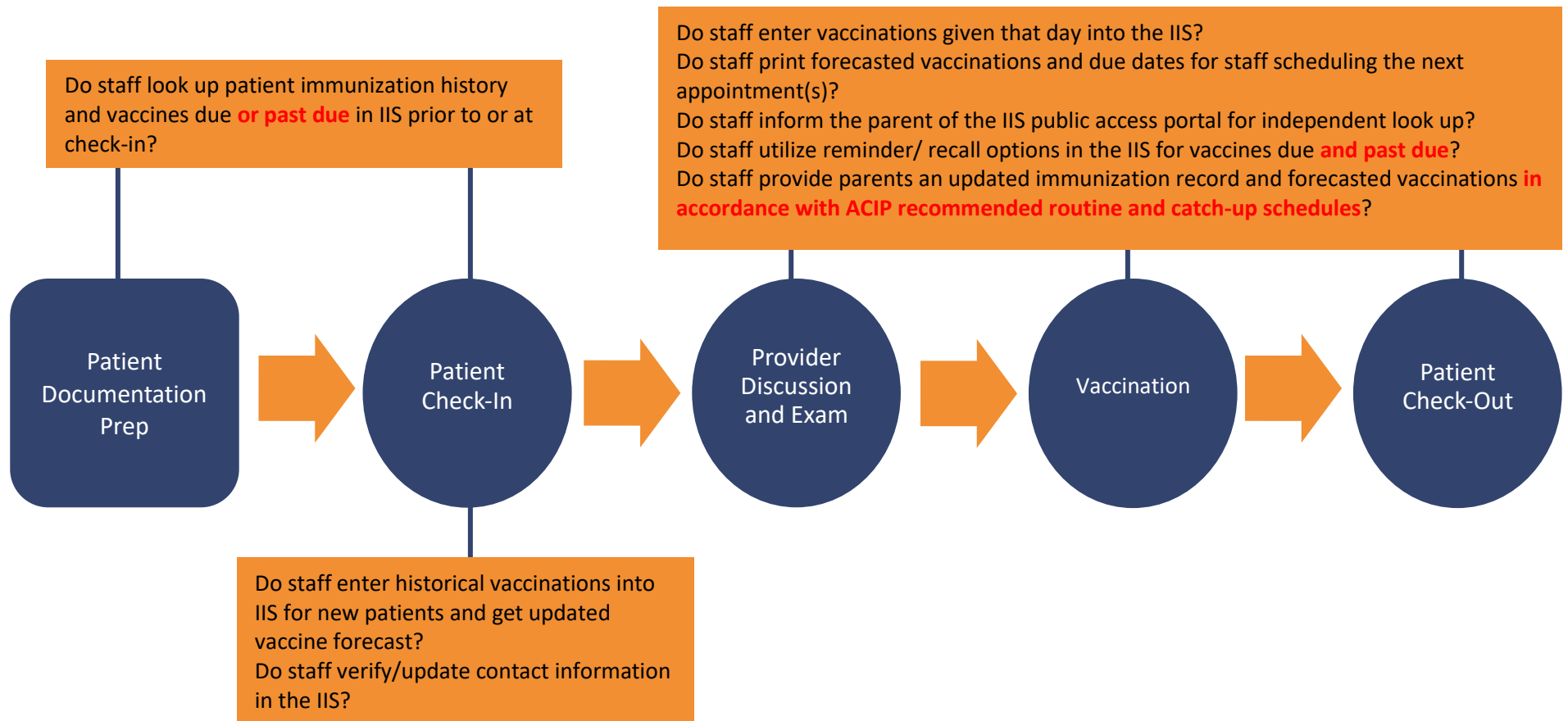
Core Strategy: Leverage IIS Functionality to Improve Immunization Practice – Direct Data

Entry – Discussion Prompts

Vaccination Restart and Catch-Up

Task	Notes
Assess patient's immunization status <i>How do staff identify which doses are due or past due?</i>	
Ensure accurate immunization record <i>How do staff gather information from the parent/ patient about any immunization record information from another provider?</i>	
Determine which vaccines are due next and the earliest date they may be given <i>Where and how do clinic staff determine future immunizations and due dates based on the ACIP recommended catch-up schedule vs. routine schedule? How is this information documented and shared with the parent?</i>	
Maintain accurate demographic and contact information <i>How do staff ensure they can contact parent/guardian easily for past due vaccines or other care issues? How is contact information verified? How frequently?</i>	
Remind/recall parent/patient about upcoming/past immunization visit(s) <i>Which methods (text, e-mail, postcard, and/or phone reminders) does clinic staff use to ensure that the patient stays up to date on their immunization schedule?</i>	
Support parent/guardian knowledge of their child's immunization status <i>Does the staff provide an updated immunization record to the parent/guardian, or tell them where/how they can access it independently? Does it include possible ACIP catch-up schedule recommendations?</i>	
Ongoing quality assurance of immunization records <i>How is staff performing quality assurance on the immunizations they report to the IIS (accuracy, completeness, timeliness of data entry)? Is staff managing patient active/inactive status in the IIS to ensure accurate assessment reports?</i>	

Assessing Processes for Leverage IIS Functionality to Improve Immunization Practice – Direct Data Entry



Data quality issues to consider:

1. Do staff routinely check to ensure the clinic is reporting immunizations to the IIS in a timely manner?
2. **Do staff routinely review coverage or patient lists for missed opportunities, invalid doses, and patients not up to date?**
3. Do staff regularly check patients' active/inactive status in the IIS and update when needed?
4. Do staff perform spot checks for completeness and accuracy of clinic immunization records in the IIS?