

Texas Reportable Conditions Reporting Process

Frequently Asked Questions

How Can I Tell What Conditions Need to be Reported?

The **Texas Notifiable Conditions List** identifies the conditions that must be reported to the DSHS and their reporting time frames. The list is available online [here](#). Or scan the QR code at right.



Texas Notifiable
Conditions List

Reporting Time Frames

1. **Report Immediately:** Call 1-800-705-8868
2. **Report within 1 workday:** Phone or Fax Report Form to DSHS*
3. **Report within 1 week:** Fax or Mail Report Form to DSHS*

*May also be submitted to DSHS as an Electronic Lab Report.

Should Notifiable Condition Reports be Sent to the DSHS Laboratory?

No. Reports must be sent to the disease reporting contact of **the patient's county of residence**. Always call 1-800-705-8868 to report "call immediately" conditions.

Fax or mail a completed Infectious Disease Report Form (EPI-1 or EPI-2) to the health department contact listed for that county.

- Notifiable Conditions Reporting contacts by county available online at <http://www.dshs.state.tx.us/idcu/investigation/conditions/contacts/>.
- EPI Reporting Forms available at <https://www.dshs.texas.gov/notifiable-conditions/reporting-forms>.

NOTE: EPI report forms are used for most reportable conditions. Refer to the reporting forms web link above to obtain reporting forms and confirm the process for chickenpox and HIV/STD reporting.

What Type of Specimens Must be Submitted to the DSHS Laboratory?

Submit **pure cultures** (or clinical specimens) to the DSHS Laboratory as they become available. (Footnote 3 of the Texas Notifiable Conditions List identifies these specimens).

- All specimens must be submitted with a **completed** DSHS specimen submission form.
- Providers must have a DSHS Submitter ID Account.
- Report forms or lab results are **not acceptable replacements** for DSHS submission forms.
- For *Haemophilus*, only isolates from normally sterile sites are accepted (e.g., blood or CSF).

Questions About . . .

Electronic Lab Reporting: Visit [Electronic Laboratory Reporting for HL7 Submitters | Texas DSHS](#) or www.dshs.texas.gov/public-health-informatics-data-exchange-unit-phid/electronic-laboratory-reporting-hl7-submitters

Specimen Submissions: (512) 776-7598 or 1-888-963-7111 ext. 7578 (toll free)

Submitter Accounts or Submission Forms: (512) 776-7578 or LabInfo@dshs.texas.gov

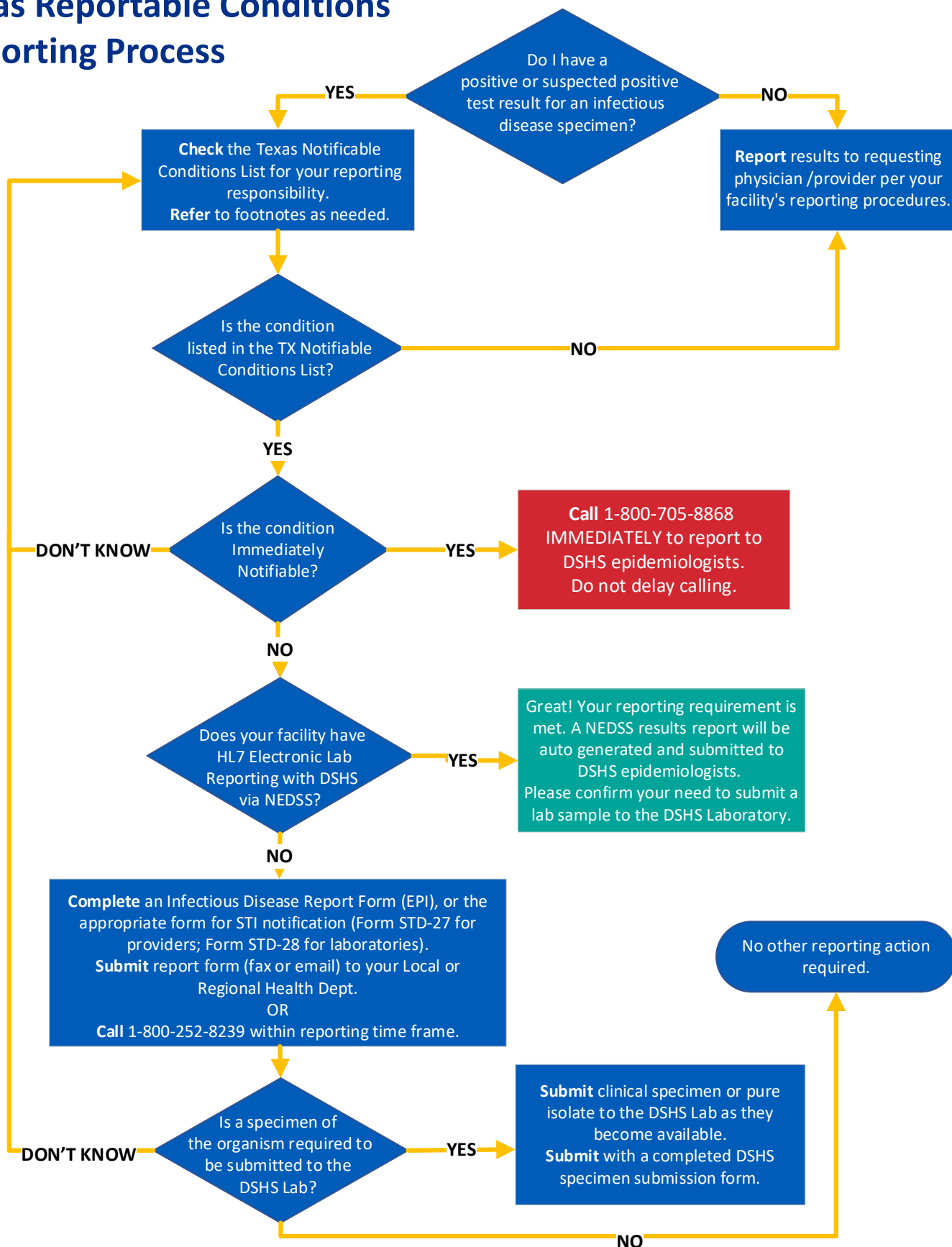


TEXAS
Health and Human
Services

Texas Department of State
Health Services

dshs.texas.gov

Texas Reportable Conditions Reporting Process



Required TX Notifiable Specimens for Submission to DSHS Laboratory

Required Isolate	Form	Reporting and Submission Form Tips
<i>Bacillus anthracis</i>	G-27A	<ul style="list-style-type: none"> Call Immediately: 1-800-705-8868 Must be shipped as Category A. Select <i>Bacillus anthracis</i> in Section 5 of G-27A.
<i>Bacillus cereus</i> that may contain anthrax toxin genes from patients with severe disease or death	G-27A	<ul style="list-style-type: none"> Call Immediately: 1-800-705-8868 Select "<i>Bacillus cereus</i> suspected of containing anthrax genes" in Section 5 of G-27A.
<i>Clostridium botulinum</i>	G-27A	<ul style="list-style-type: none"> Call Immediately: 1-800-705-8868 Must be shipped as Category A. Select appropriate boxes in Sections 3 and 4 of G-27A.
<i>Brucella</i> species	G-27A	<ul style="list-style-type: none"> Notify DSHS Within 1 Workday. Must be shipped as Category A. Select <i>Brucella</i> spp. in Section 5 of G-27A.
<i>Candida auris</i>	G-2E	<ul style="list-style-type: none"> Notify DSHS Within 1 Workday. Select "Isolates" in Section 4, Box 1 of G-2E. Select "<i>Candida</i> Identification by MALDI" in Section 4, Box 1.
<i>Corynebacterium diphtheriae</i>	G-2B	<ul style="list-style-type: none"> Call Immediately: 1-800-705-8868 Indicate in Section 2 that specimen is associated with an outbreak or for surveillance, per epidemiologist guidance. Select <i>Corynebacterium diphtheriae</i> in Section 4.1 of G-2B.
<i>Francisella tularensis</i>	G-27A	<ul style="list-style-type: none"> Call Immediately: 1-800-705-8868 Must be shipped as Category A. Select <i>Francisella tularensis</i> in Section 5 of G-27A.
<i>Haemophilus influenzae</i> (invasive) from normally sterile sites in children younger than 5 years old	G-2B	<ul style="list-style-type: none"> Submit invasive specimens from normally sterile sites in children younger than 5 years only. (e.g., blood or CSF) Indicate in Section 2 that specimen is associated with an outbreak or is for surveillance. Select <i>Haemophilus influenzae</i> in Section 4.1 of G-2B.
<i>Listeria monocytogenes</i>	G-2B	<ul style="list-style-type: none"> Indicate in Section 2 of G-2B that specimen is associated with an outbreak/for surveillance. Select <i>Listeria</i> in Section 4.1 of G-2B.
<i>Mycobacterium tuberculosis</i> complex	G-MYCO	<ul style="list-style-type: none"> Notify DSHS Within 1 Workday. Must be submitted as Category A. Check the "MTB Genotyping Only/for Compliance" option in Section 5 of G-MYCO.
<i>Neisseria meningitidis</i> from normally sterile sites or purpuric lesions	G-2B	<ul style="list-style-type: none"> Call Immediately: 1-800-705-8868 Indicate in Section 2 of G-2B that specimen is associated with an outbreak or is for surveillance. Select <i>Neisseria meningitidis</i> in Section 4.1 of G-2B.
<i>Salmonella</i> species, and specimens positive for <i>Salmonella</i> by culture independent diagnostic testing (CIDT)	G-2B	<ul style="list-style-type: none"> Indicate in Section 2 of G-2B that specimen is associated with an outbreak or is for surveillance. Select <i>Salmonella</i> in Section 4.1 of G-2B.
Shiga toxin-producing <i>Escherichia coli</i> (All <i>E. coli</i> O157:H7, and any isolates or specimens demonstrating Shiga toxin activity)	G-2B	<ul style="list-style-type: none"> Must be shipped as Category A. Indicate in Section 2 of G-2B that specimen is associated with an outbreak or is for surveillance. Select "Shiga toxin-producing <i>Escherichia coli</i>" in Section 4.1.
<i>Staphylococcus aureus</i> with a vancomycin MIC greater than 2µg/mL	G-2B	<ul style="list-style-type: none"> Indicate in Section 2 of G-2B that specimen is associated with an outbreak or is for surveillance. Select <i>Staphylococcus aureus</i> in Section 4.1 of G-2B.
<i>Streptococcus pneumoniae</i> from normally sterile sites in children younger than 5 years old	G-2B	<ul style="list-style-type: none"> Indicate in Section 2 of G-2B that specimen is associated with an outbreak or is for surveillance. Select <i>Streptococcus pneumoniae</i> in Section 4.1 of G-2B.
<i>Vibrio</i> species, and specimens positive for <i>Vibrio</i> by CIDT	G-2B	<ul style="list-style-type: none"> Notify DSHS Within 1 Workday. Indicate in Section 2 of G-2B that specimen is associated with an outbreak or is for surveillance. Select <i>Vibrio</i> sp. or <i>Vibrio cholera</i> in Section 4.1 of G-2B.
<i>Yersinia pestis</i>	G-27A	<ul style="list-style-type: none"> Call Immediately: 1-800-705-8868 Must be shipped as Category A. Select <i>Yersinia pestis</i> in Section 5 of G-27A.