

RADIOLOGICAL RESPONSE UNIT STATUS UPDATE



Current RRU Status

- The Radiological Response Unit (RRU) was established under the Texas Emergency Medical Task Force in 2024 at the request of DSHS to provide prehospital care and hospital augmentation in the event of large-scale radiological incidents.
- Initial funding has allowed us to purchase critical equipment, define overarching program objectives and mission parameters, preposition supply caches across the state, and begin operational development with work groups.
- Current lines of effort are prioritizing resources, solidifying the RRU team structure, and developing an education and training roadmap.



Equipment Cache Buildout



- RRU equipment selected by the Advisory Committee was purchased and delivered to the EMTF warehouse.
- Equipment has been divided into 8 primary and 4 supplemental caches.
- Primary equipment caches are located in each EMTF region.
- Supplemental caches are pre-positioned in EMTFs 2, 6, 7, and 8.
- An additional 20 PRDs have been procured and distributed for permanent assignment with each AMBUS.



Current RRU Cache Contents

Detection and Dosimetry

- AccuRad PRDs
- Ludlum 26-3 Friskers
- Ludlum 3001 Survey Meters
- Rapiscan TPM 905 Portal Monitors
- RadLight dosimetry watches and readers

Decon, Packaging, and PPE

- FiberTect Responder Decon Kits
- FiberTect wipe rolls
- Shuffle pits
- Lint rollers for particulate
- N95 masks and goggles
- Blankets and gowns for redress

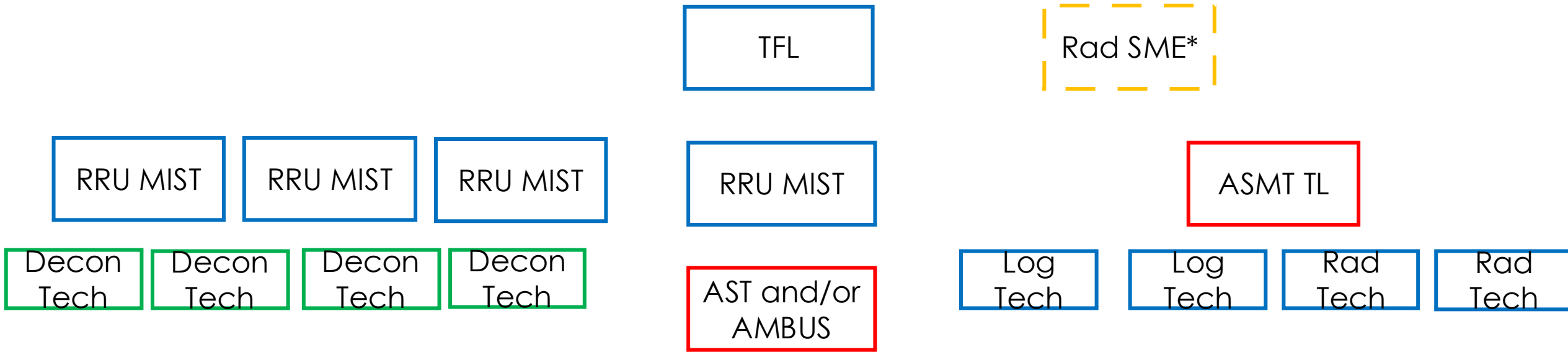


RRU Team Structure

- Focused on building an agile team structure capable of flexing to meet incident needs.
- Planned development of two team types, pre-hospital and hospital augmentation, based on Advisory Council feedback and IDRUC precedent.
- Teams will have deployed personnel with operational expertise, supported by on-call subject matter experts.
- Third team type specializing in recovery/reconstitution under consideration by RRU Work Group.
- Explore possible use of RRU personnel in PRND role for JHAT operations.



Pre-Hospital Team – Working Structure



Pre-Hospital Training Levels

Level 1 (10 hrs online)

- AWR-140-W (4 hrs)
- AWR-400-W (2 hrs)
- PER-307-W (4 hrs)

Level 2 (2 days)

Level 1 Classes Plus:

- PER-345 (4 hrs)
- PER-348 (8 hrs)
- PER-355 (4 hrs)

Level 3 (HAZMATech)

Level 2 Classes Plus:

- Decon Training (8-12 hrs?)

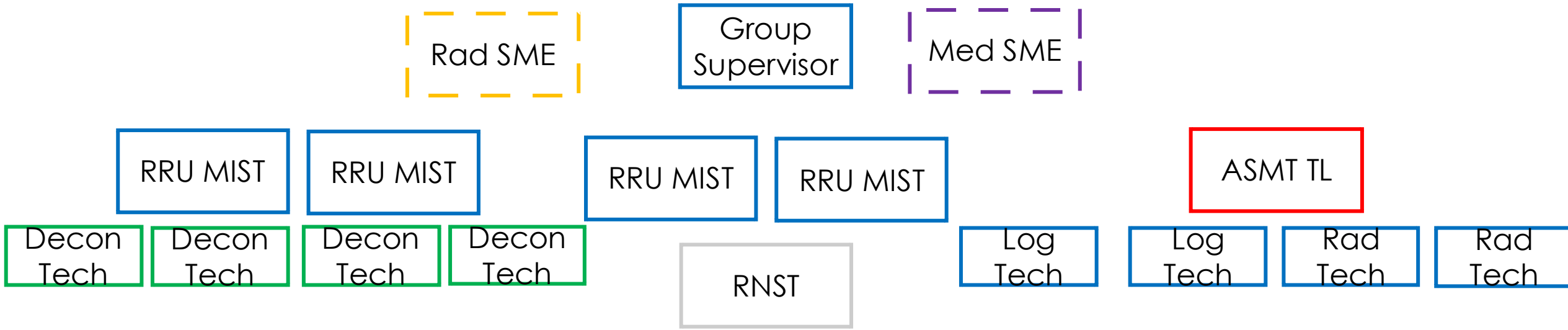
SME

Level 3 Classes Plus:

- ROSS Type 4 (4 days)



Hospital Support Team – Initial Proposed Structure



Hospital Training Levels

Level 1 (14 hrs online)

- AWR-140-W (4 hrs)
- AWR-400-W (2 hrs)
- PER-307-W (4 hrs)
- AWR-350-W (1 hr)
- AWR-410-W (1 hr)
- AWR-411-W (1 hr)
- AWR-412-W (1 hr)

Level 2 (3 days)

Level 1 Classes Plus:

- PER-345 (4 hrs)
- PER-348 (8 hrs)
- PER-355 (4 hrs)
- PER-370 (8 hrs)

Level 3 (HAZMAT Ops)

Level 2 Classes Plus:

- Decon Training (8-12 hrs?)

Medical Treatment

Level 2 Classes Plus:

- REAC/TS Radiation Emergency Medicine Course (3 days)

SME

Level 3 Classes Plus:

- ROSS Type 4 (4 days)

Medical SME

Level 2 Classes Plus:

- REAC/TS Radiation Emergency Medicine and Adv. Rad Medicine Courses (6 days)



The Road Ahead

- Member recruiting and team buildout
- Scheduling and conducting training (remote, MTT, and on-site)
- Continued operational development and team refinement
- Initial planning for future RRU components



Questions?

