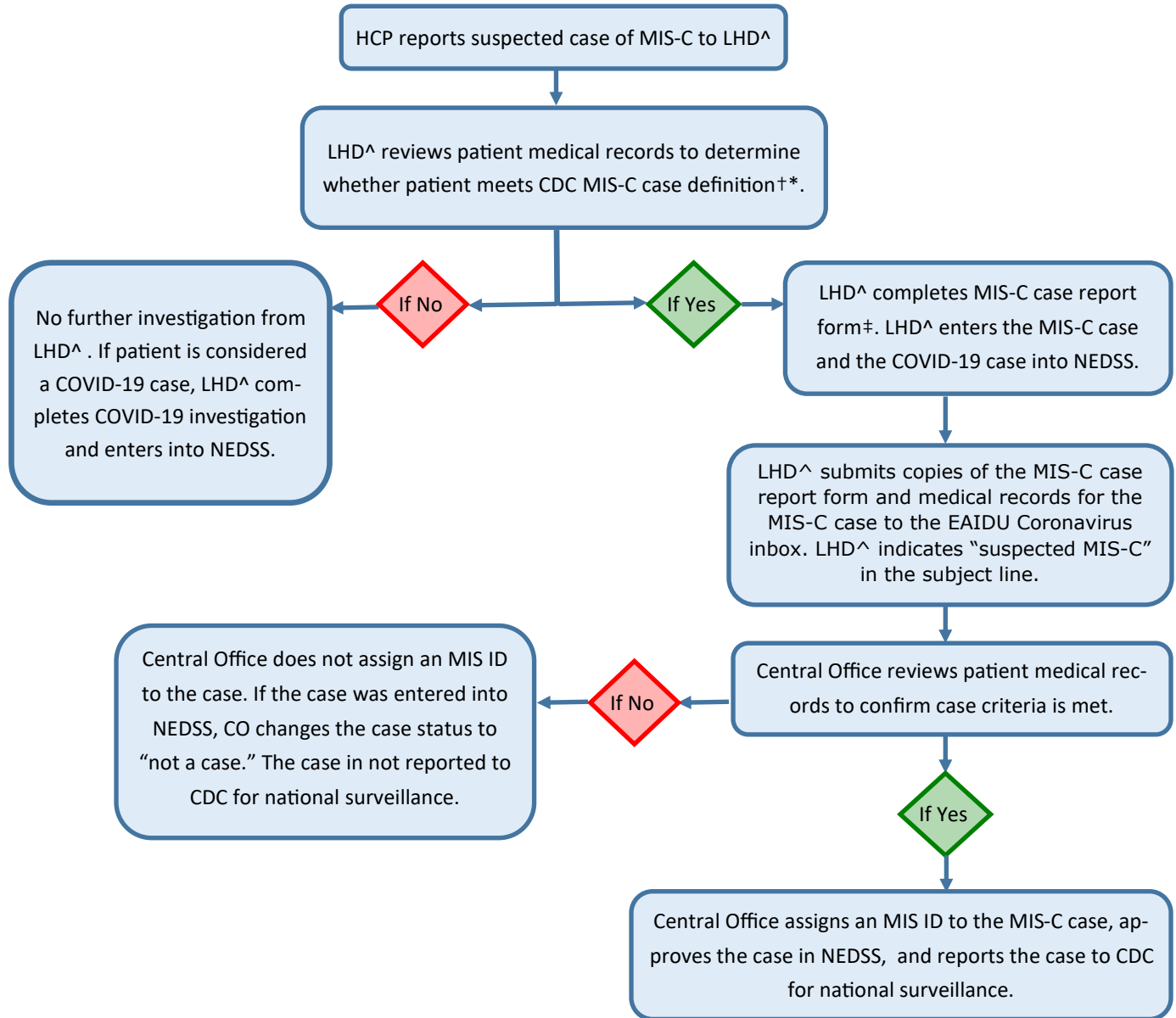




### Multisystem Inflammatory Syndrome in Children (MIS-C) Reporting Process



^ PHR will assume LHD responsibilities where PHR serves as the LHD

†MIS-C Case Definition (CDC): [https://www.cdc.gov/mis/mis-c/hcp/index.html?CDC\\_AA\\_refVal=https%3A%2F%2Fwww.cdc.gov%2Fmis%2Fhcp%2Findex.html](https://www.cdc.gov/mis/mis-c/hcp/index.html?CDC_AA_refVal=https%3A%2F%2Fwww.cdc.gov%2Fmis%2Fhcp%2Findex.html).

\*Central Office may assist with determining whether a patient meets case definition, completing the case report form, or entering the case into NEDSS, as needed.

‡CDC MIS-C Case Report Form: <https://www.cdc.gov/mis/pdfs/hcp/mis-c-form-fillable.pdf>

Acronyms:

CDC—Centers for Disease Control and Prevention

COVID-19—Coronavirus Disease 2019

HCP—Healthcare Provider

LHD— Local Health Department

MIS-C—Multisystem Inflammatory Syndrome in Children

PHR— Public Health Region

EAIDU—Emerging and Acute Infectious Disease Unit

EAIDU Coronavirus Inbox: [EAIDU-Coronavirus@dshs.texas.gov](mailto:EAIDU-Coronavirus@dshs.texas.gov)