

# COMPLIANCE SECTION

# CONSUMER SAFETY BRANCH



**TEXAS**  
Health and Human  
Services

Texas Department of State  
Health Services

# **DSHS ENVIRONMENTAL LEAD GROUP**



## **FISCAL YEAR 2025 ANNUAL ANALYSIS FINAL ENFORCEMENT ACTIONS**

Pursuant to 25 Texas Administrative Code Chapter 295

# Environment Lead Program Mission

The mission of the Environmental Lead Program is to protect the public, especially young children, from exposure to lead in their environment by assuring that persons conducting lead inspections, lead risk assessments, and lead abatements in target housing (built before 1978) and child-occupied facilities (built before 1978) are properly trained and certified and are following minimum standards that protect the health of workers and building occupants



# FOODS GROUP OPERATORS LICENSE TYPES

**Lead Abatement Workers - 276**

**Lead Abatement Supervisors - 99**

**Lead Abatement Project Designer – 32**

**Lead Risk Assessor – 234**

**Lead Inspector – 64**

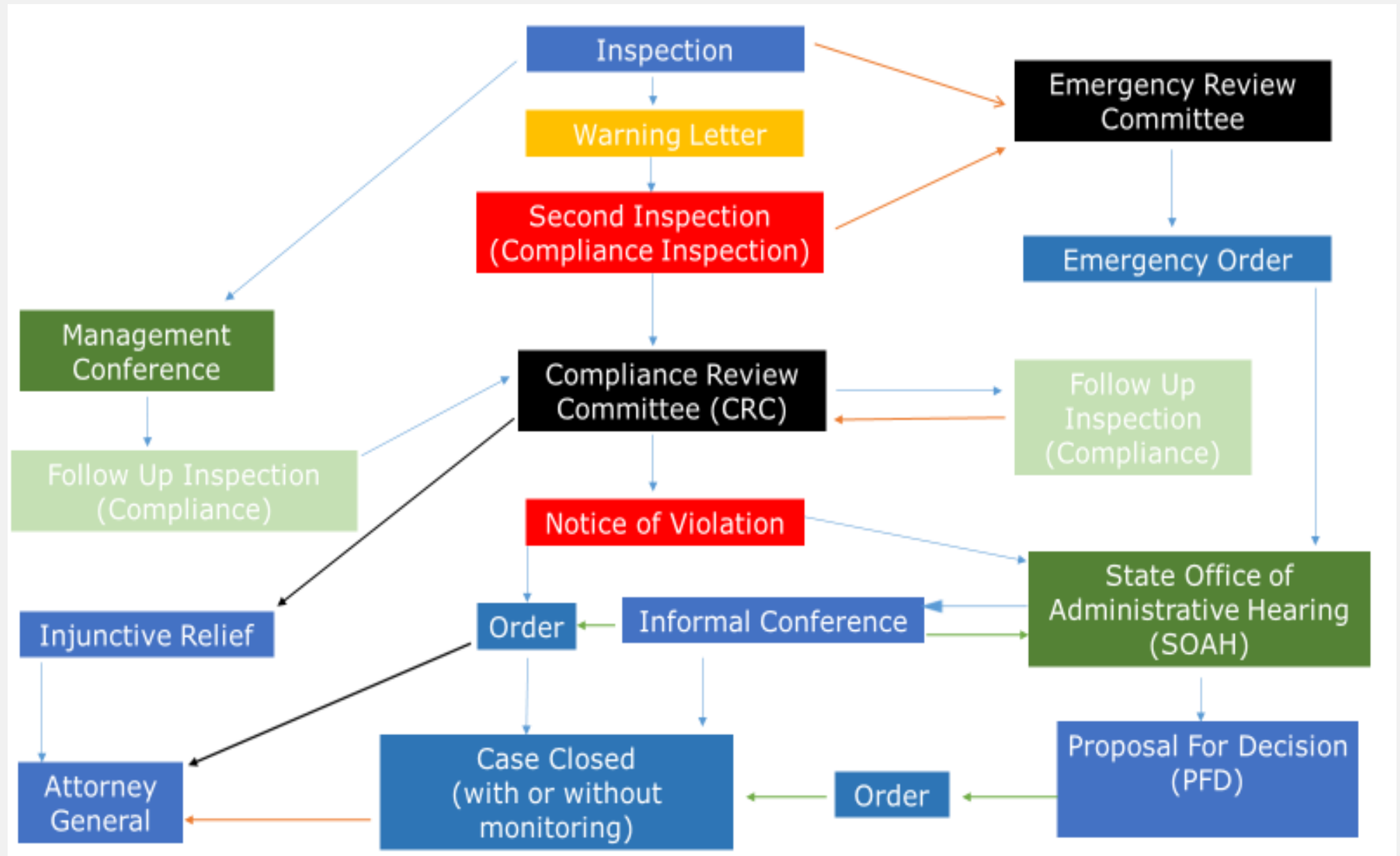
**Lead Firms – 177**

**Lead Training Provider - 12**



Texas Department of State  
Health Services

# Environmental Lead Compliance Flowchart



**TEXAS**  
Health and Human  
Services

**Texas Department of State Health Services**

# Cases referred to Compliance for Enforcement Action

## NOV's Issued

2025	2024	2023	2022
2	14	3	6



Texas Department of State  
Health Services

# Informal Conference (IC)

## Informal Conferences Held

2025	2024	2023	2022
5	2	6	2

# Case Closures

## Orders

2025	2024	2023	2022
1	2	2	3

## Withdrawn

2025	2024	2023	2022
1	2	1	0



# Cases Closed

---

**Cases with final Order are either:**

- closed with monitoring  
(terms and conditions to be met are still pending)
- closed without monitoring  
(all terms and conditions are met)

# Case Closed- Continued

## Case Closed without Monitoring

2025	2024	2023	2022
1	4	3	3



# Grand Total Penalty Amount Assessed

2025	2024	2023	2022
\$250	\$500	\$500	\$1125



Texas Department of State  
Health Services

For more information regarding Environmental Lead policies and protocols, please click on the link below:

<https://www.dshs.texas.gov/environmental-lead-program>



**TEXAS**  
Health and Human  
Services

Texas Department of State  
Health Services

# Thank You



**TEXAS**  
Health and Human  
Services

Texas Department of State  
Health Services