

Consumer Safety

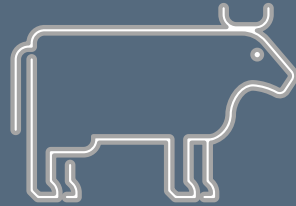
FOOD & DRUG COMPLIANCE



TEXAS
Health and Human
Services

Texas Department of State
Health Services

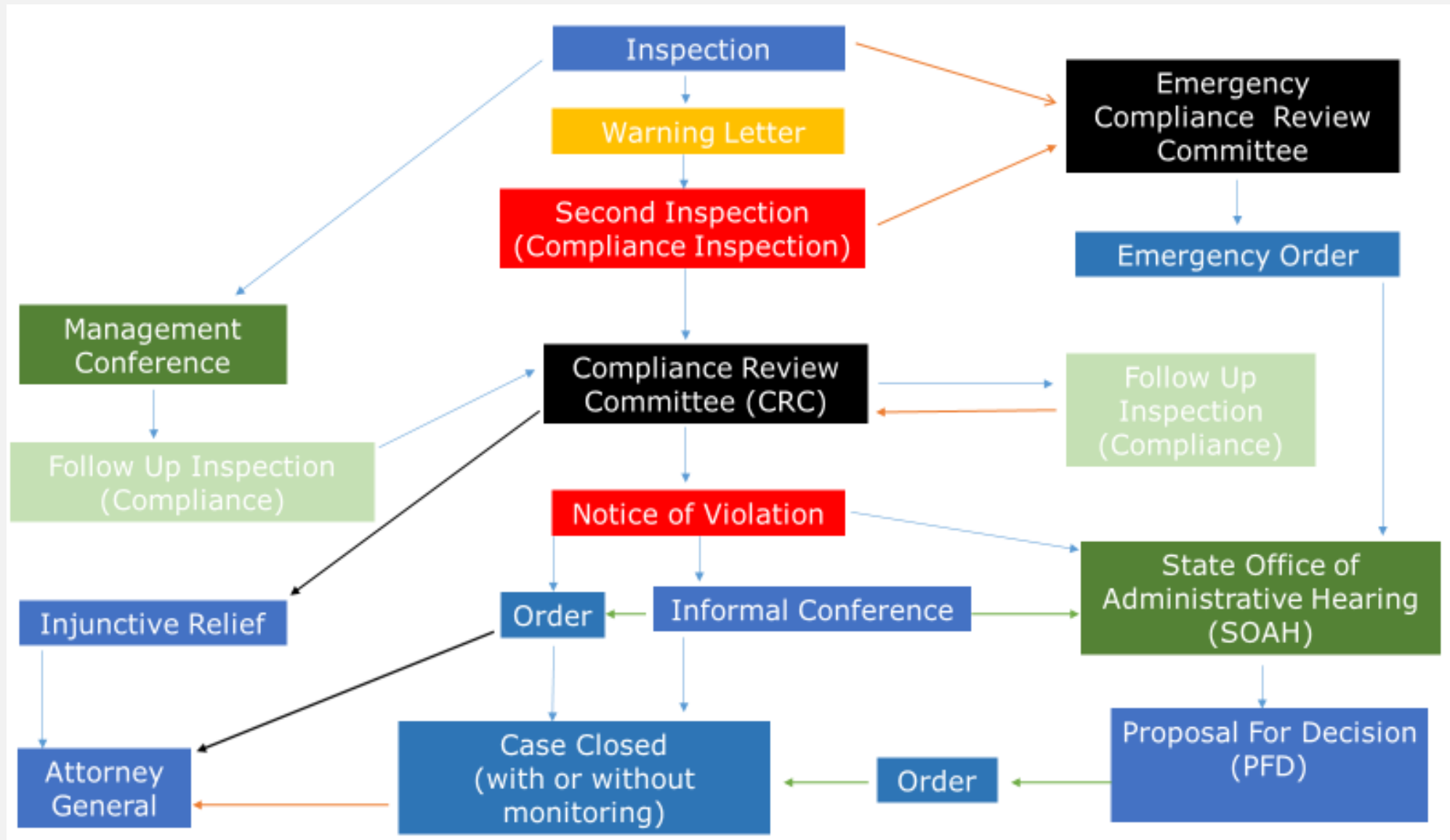
MEAT SAFETY ASSURANCE (MSA)



COMPLIANCE



Food & Drug Compliance Flowchart



Cases referred to Compliance

- Thirty (30) cases were referred in total:
 - All thirty (30) cases were triaged through Compliance Review Committee (CRC)

CRC	30
Total	30



Texas Department of State
Health Services

Outcomes

After triage at CRC:

- Twenty-eight (28) Notice of Violation (NOV) letters were cleared to be issued
- Two (2) cases were returned to program



Texas Department of State
Health Services

Informal Conference (IC)

Three (3) cases were heard at an IC:

- Two (2) cases were settled after the IC
- One (1) case proceeded to the State Office of Administrative Hearings



Texas Department of State
Health Services

State Office of Administrative Hearings (SOAH)

Compliance referred thirteen (13) cases to SOAH, either at the request of the Respondent or at Department request.

- ❖ All Respondents were offered the opportunity to have their case(s) presented before an Administrative Law Judge.

SOAH REFERRAL	13
---------------	----

Orders & Agreements Processed

- Sixteen (16) Agreed Order/ Acceptance Order (AO)
 - An Agreed Order is issued after an informal conference to document and memorialize the settlement agreement reached between a Respondent and the Department.
 - An Acceptance Order is issued when a Respondent accepts the proposed disciplinary action in the Department's Notice.
- One (1) Default Order (DO)
 - A Default Order is issued after the Respondent has not complied with the Department or has not responded to the Departments Notice.
- One (1) Attorney General (AG) Referrals
 - 1 case was referred to the AG for further administrative and/or judicial remedies on Respondents who failed to and/or refuse to comply with a final order.



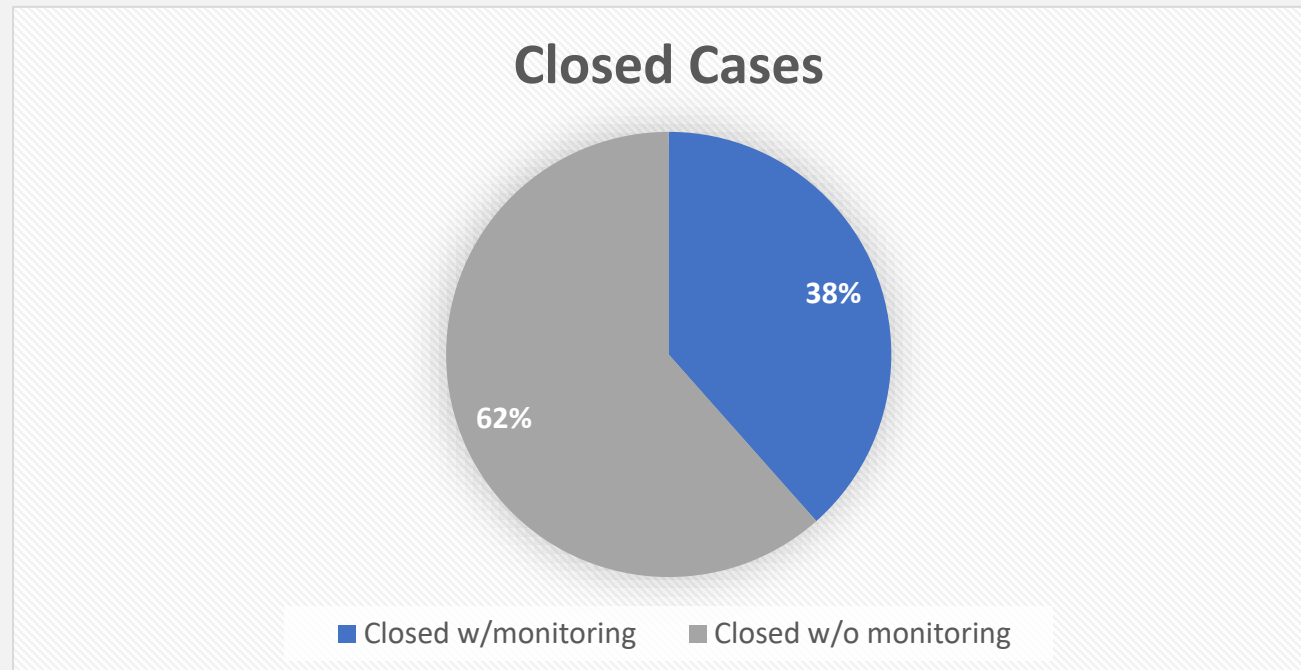
Cases Closed With or Without Monitoring

Cases that have a finalized Order or an Agreement are either:

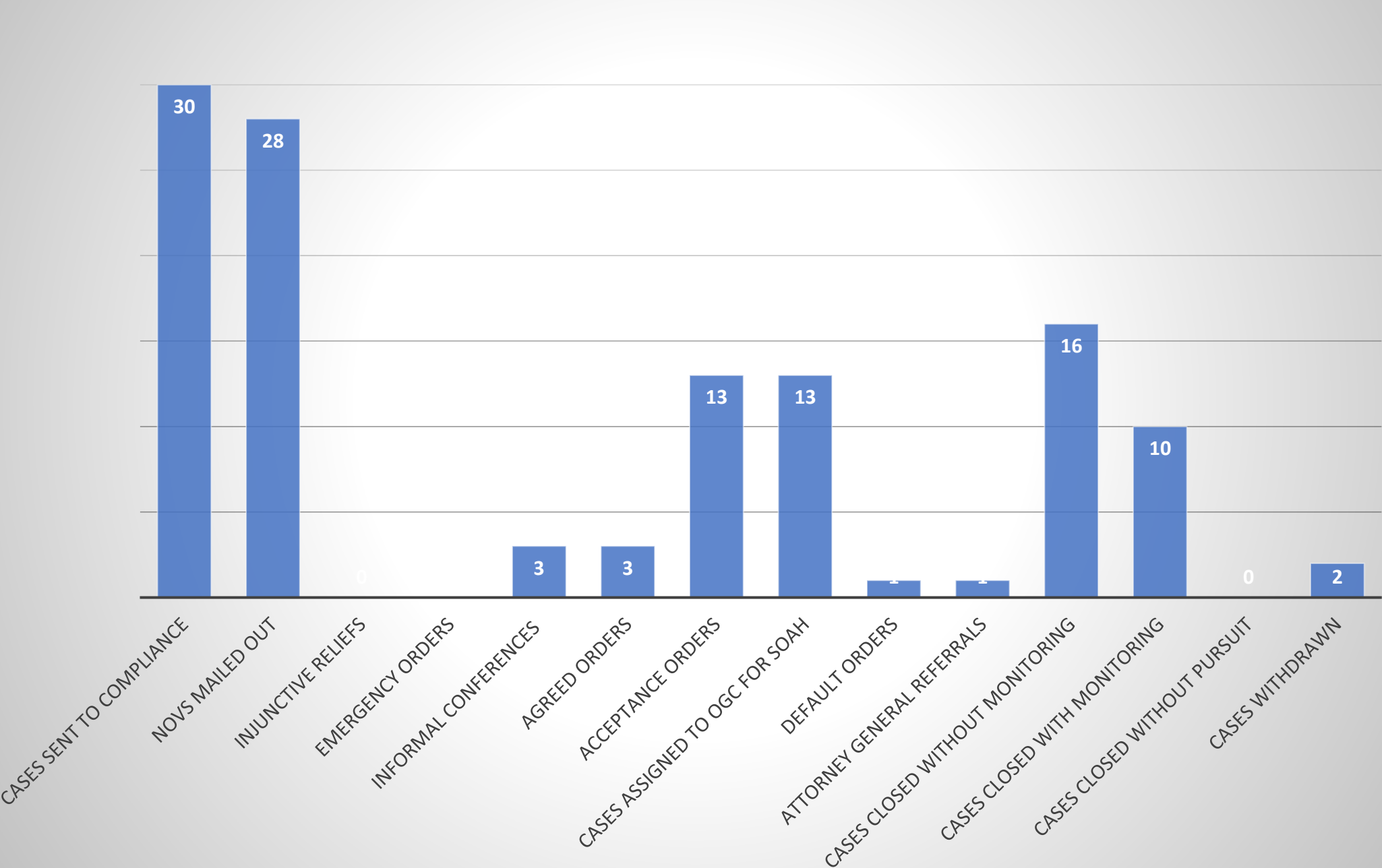
- Closed with monitoring
 - Terms and conditions to be met are still pending
- Closed without monitoring
 - All terms and conditions are met

Cases Closed With or Without Monitoring Continued

- 10 cases were closed with monitoring
- 16 cases were closed without monitoring



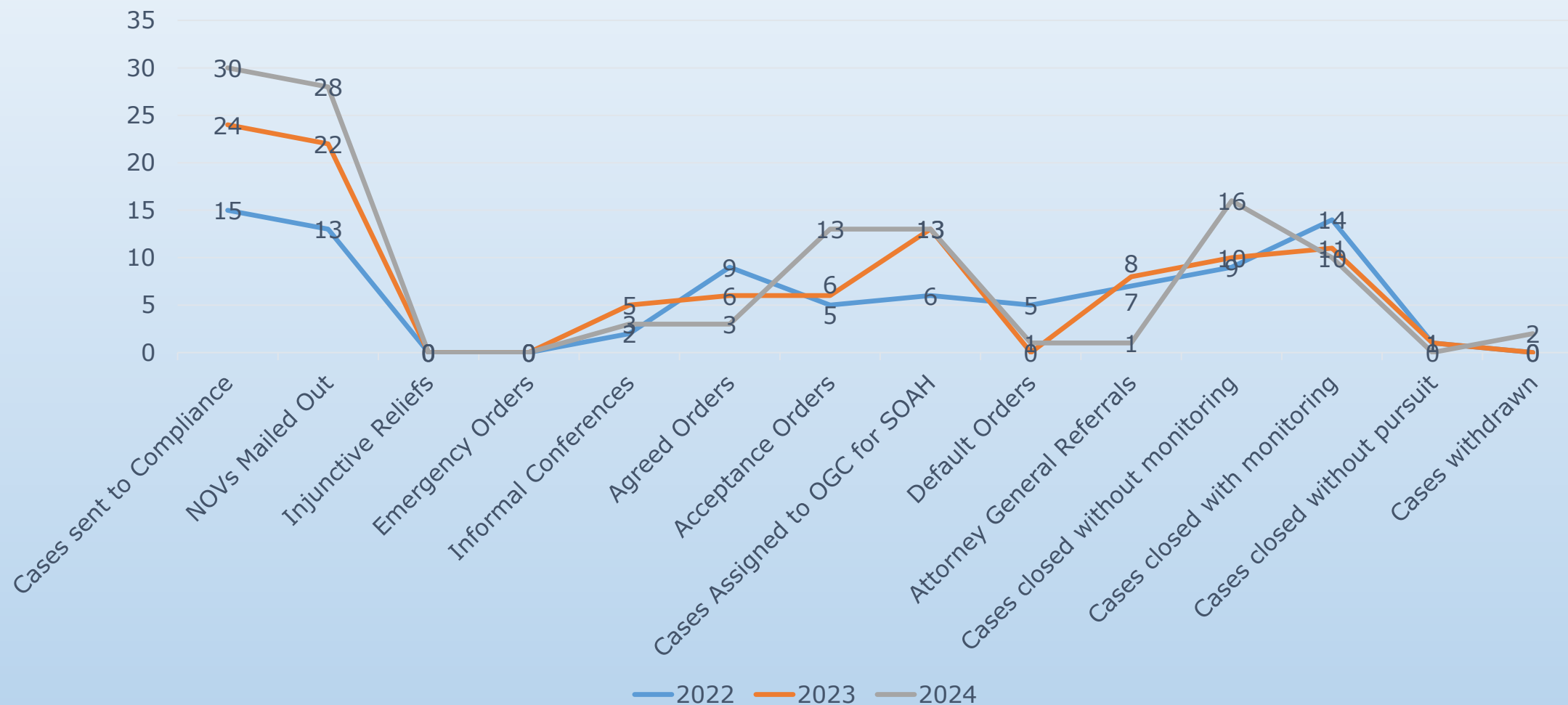
2024 MSA Cases



Texas Department of State
Health Services

Ongoing trends

Fiscal Years 2022, 2023, & 2024



For more information regarding Compliance Consumer Safety policies and protocols, please click on the link below:

[Consumer Safety Unit Procedure Manual 122123.pdf](#)



TEXAS
Health and Human
Services

Texas Department of State
Health Services

Thank You!



TEXAS
Health and Human
Services

Texas Department of State
Health Services