



TEXAS  
Health and Human  
Services

---

Texas Department of State  
Health Services

# ImmTrac2 Reporting

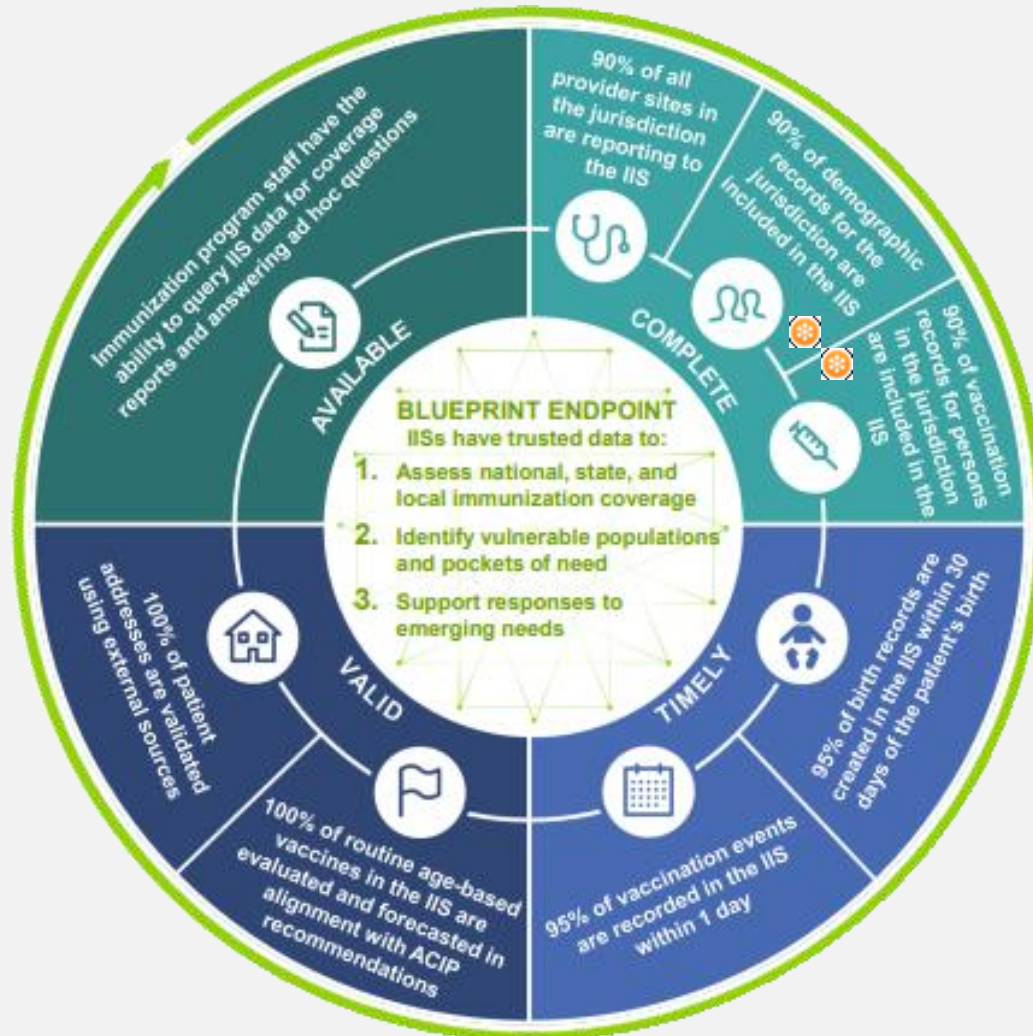
---

Texas Immunization Registry

# CDC IIS Data Quality Blueprint



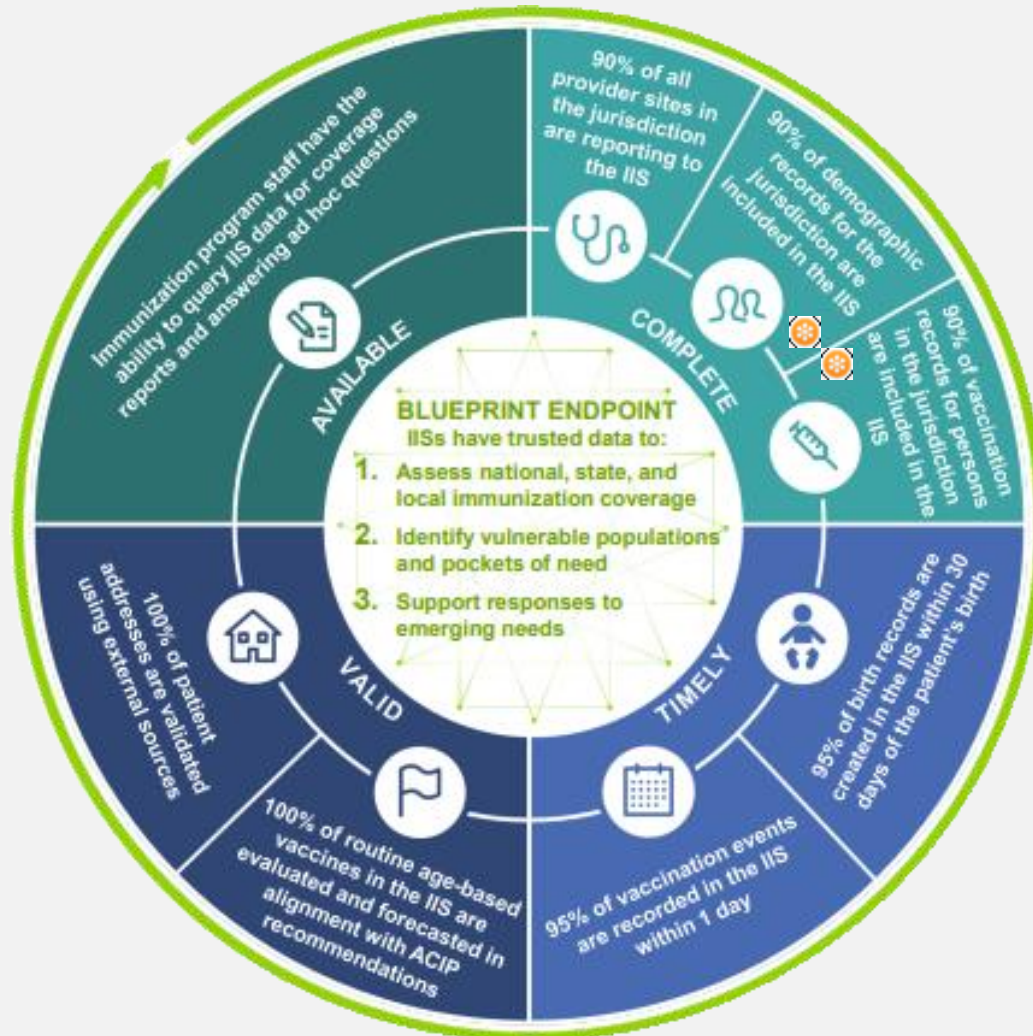
# CDC IIS Data Quality Blueprint



**Immunization Information Systems (IIS) is data source to support:**

- Coverage rates
- Identify pockets of need
- Respond to emerging needs

# CDC IIS Data Quality Blueprint



## What is the IIS Blueprint?

- Guide to address and advance data quality

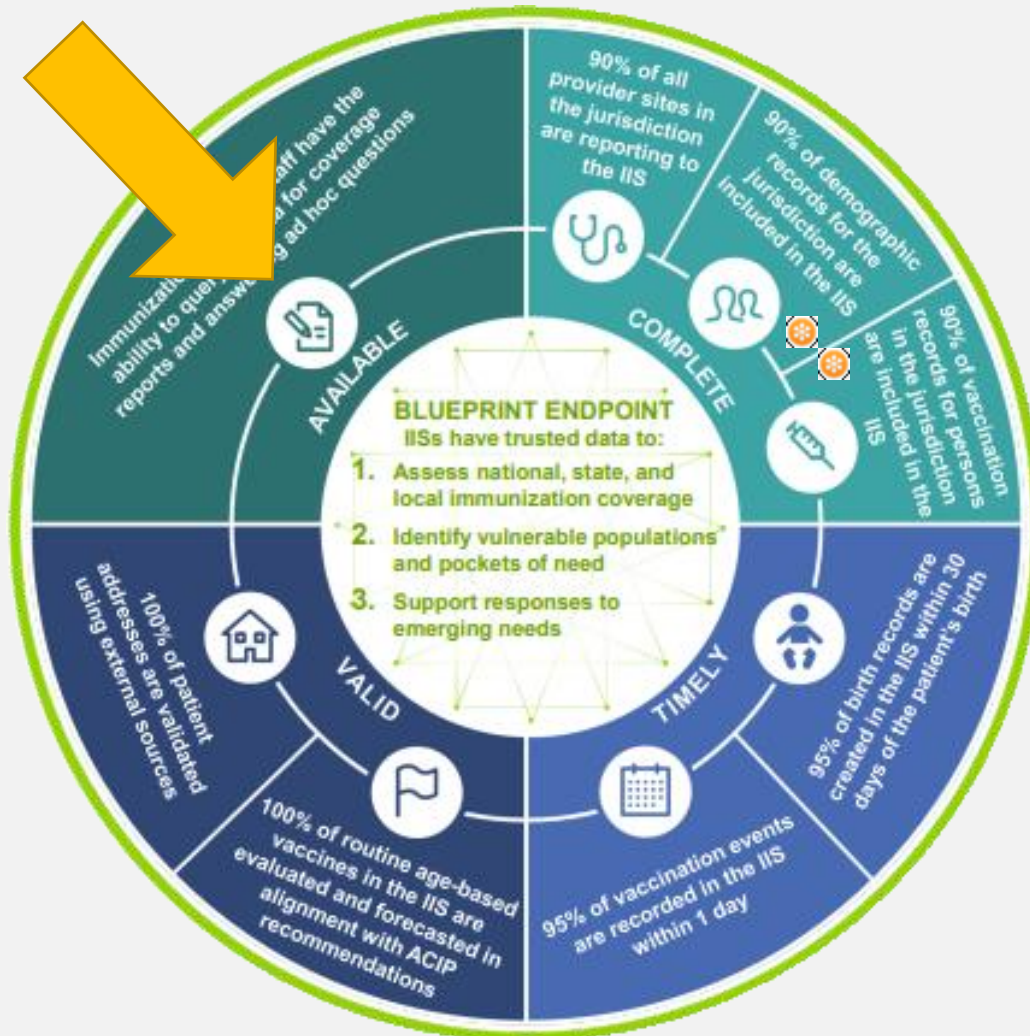
## Purpose of IIS Blueprint

- Align with CDC standards
- Increased data use
- Focus on improved data quality
- Improve clinical decision support



Texas Department of State Health Services

# CDC IIS Data Quality Blueprint



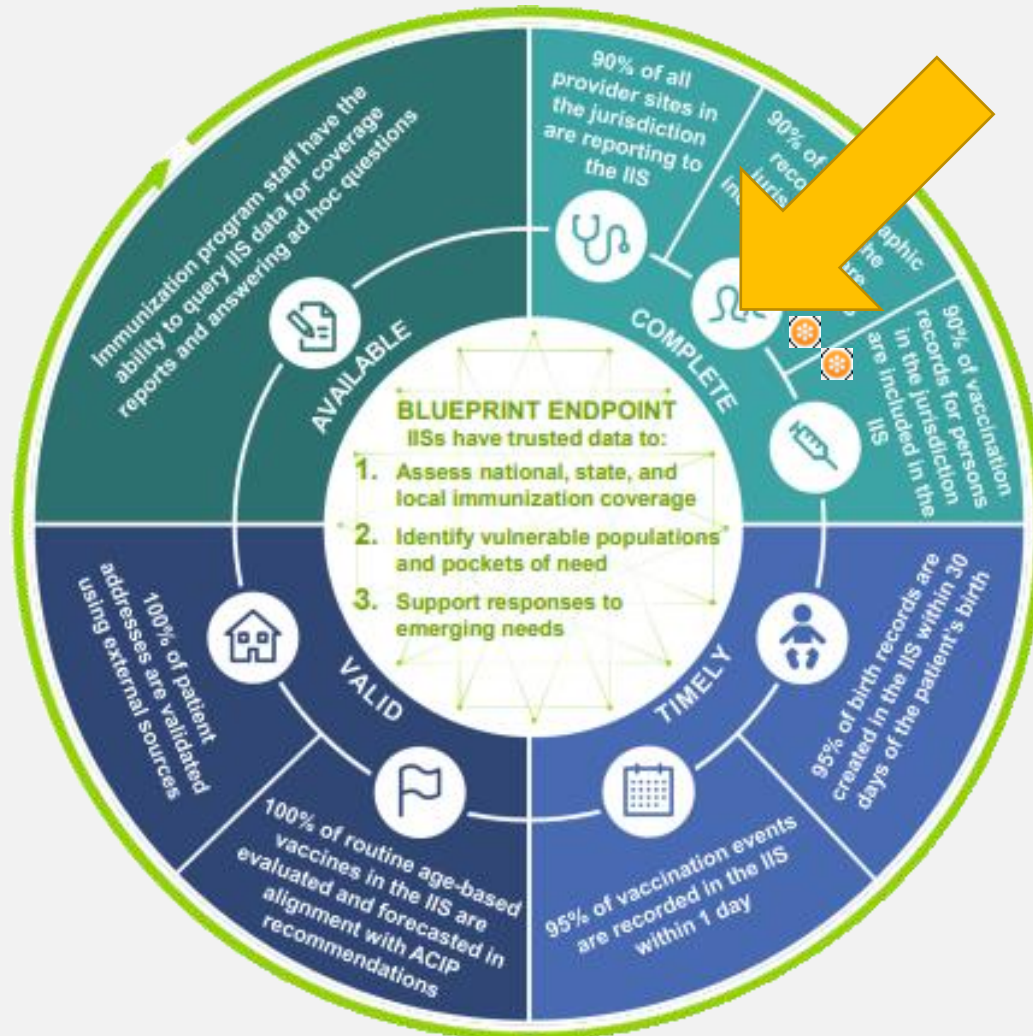
## Available Data

- ImmTrac2 Reports
- IQIP Coverage Rates
- GlobalScape Reports



Texas Department of State Health Services

# CDC IIS Data Quality Blueprint



## Complete Data

- Organizations registered and reporting to ImmTrac2
- Submit complete **client** information
- Submit complete **vaccine** information

# CDC IIS Data Quality Blueprint



## Timely Data

- Birth records within 30 days
- Vaccine events within 1 day



Texas Department of State Health Services

# CDC IIS Data Quality Blueprint



## Valid Data

- Patient information
- Vaccine data



# Texas Immunization Provider Summary (TIPS) Report

# TIPS Report - Overview

## Monthly Reporting Period: 09/2021

### User Activity Summary:

Displays the user activity for the reporting period and compares the total users versus the active users.

Total User Logins:	210			
Online Client Searches:	338	11	11	100%
Clients Served:	14,088	Total Users	Active Users	Active Users

### Online Activity:

Displays counts of clients consented, immunizations added, and reporting latency for online activity.

Clients Added:	7			
Immunizations Added:	36	3	4	N/A*
Adult:	0	Child Clients	Adult Clients	Average Entry Latency
Child:	36			

\* Average Entry Latency: In days, the amount of time taken to enter an online immunization.

### Data Exchange Activity:

Displays counts of clients consented, immunizations added, and reporting latency for data exchange activity.

Total Files Submitted:	22			
Clients Submitted:	607	77%	23%	1,540
Clients Accepted:	466	Client Accept Rate	Immunizations Accept Rate	Average Entry Latency
Clients Rejected:	136			
Immunizations Submitted:	3,830			
Immunizations	882			
Immunizations	817			

\*\* Average Entry Latency: In days, the amount of time taken to report immunizations via Data Exchange.

## User Activity

## Online Activity

## Data Exchange Activity



Texas Department of State Health Services

# TIPS Report – IIS Blueprint

## Monthly Reporting Period: 09/2021

### User Activity Summary:

Displays the user activity for the reporting period and compares the total users versus the active users.

Total User Logins:	210			
Online Client Searches:	338	11	11	100%
Clients Served:	14,088	Total Users	Active Users	Active Users

### Online Activity:

Displays counts of clients consented, immunizations added, and reporting latency for online activity.

Clients Added:	7			
Immunizations Added:	36	3	4	N/A*
Adult:	0	Child Clients	Adult Clients	Average Entry Latency
Child:	36			

\* Average Entry Latency: In days, the amount of time taken to enter an online immunization.

### Data Exchange Activity:

Displays counts of clients consented, immunizations added, and reporting latency for data exchange activity.

Total Files Submitted:	22			
Clients Submitted:	607	77%	23%	1,540
Clients Accepted:	466	Client Accept Rate	Immunizations Accept Rate	Average Entry Latency
Clients Rejected:	136			
Immunizations Submitted:	3,830			
Immunizations	882			
Immunizations	817			

\*\* Average Entry Latency: In days, the amount of time taken to report immunizations via Data Exchange.

## Availability of Data

- ImmTrac2 users have access to TIPS report for each organization they are associated to
- Used during IQIP visits to identify reporting issues and improve coverage rate



# TIPS Report – IIS Blueprint

## Monthly Reporting Period: 09/2021

### User Activity Summary:

Displays the user activity for the reporting period and compares the total users versus the active users.

Total User Logins:	210			
Online Client Searches:	338	11	11	100%
Clients Served:	14,088	Total Users	Active Users	Active Users

### Online Activity:

Displays counts of clients consented, immunizations added, and reporting latency for online activity.

Clients Added:	7			
Immunizations Added:	36	3	4	N/A*
Adult:	0	Child Clients	Adult Clients	Average Entry Latency
Child:	36			

\* Average Entry Latency: In days, the amount of time taken to enter an online immunization.

### Data Exchange Activity:

Displays counts of clients consented, immunizations added, and reporting latency for data exchange activity.

Total Files Submitted:	22			
Clients Submitted:	607	77%	23%	1,540
Clients Accepted:	466	Client Accept Rate	Immunizations Accept Rate	Average Entry Latency
Clients Rejected:	136			
Immunizations Submitted:	3,830			
Immunizations	882			
Immunizations	817			

\*\* Average Entry Latency: In days, the amount of time taken to report immunizations via Data Exchange.

## Complete Data

- Data exchange rejections

**Note:** TIPS is a high-level overview of data submitted and does not provide specific errors.



# TIPS Report – IIS Blueprint

## Monthly Reporting Period: 09/2021

### User Activity Summary:

Displays the user activity for the reporting period and compares the total users versus the active users.

Total User Logins:	210			
Online Client Searches:	338	11	11	100%
Clients Served:	14,088	Total Users	Active Users	Active Users

### Online Activity:

Displays counts of clients consented, immunizations added, and reporting latency for online activity.

Clients Added:	7			
Immunizations Added:	36	3	4	N/A*
Adult:	0	Child Clients	Adult Clients	Average Entry Latency
Child:	36			

\* Average Entry Latency: In days, the amount of time taken to enter an online immunization.

### Data Exchange Activity:

Displays counts of clients consented, immunizations added, and reporting latency for data exchange activity.

Total Files Submitted:	22			
Clients Submitted:	607	77%	23%	1,540
Clients Accepted:	466	Client Accept Rate	Immunizations Accept Rate	Average Entry Latency
Clients Rejected:	136			
Immunizations Submitted:	3,830			
Immunizations	882			
Immunizations	817			

\*\* Average Entry Latency: In days, the amount of time taken to report immunizations via Data Exchange.

## Validity of Data

- Is the data on the report, correct?
- IQIP visits – discussion with vaccine coordinator(s)



# TIPS Report – IIS Blueprint

## Monthly Reporting Period: 09/2021

### User Activity Summary:

Displays the user activity for the reporting period and compares the total users versus the active users.

Total User Logins:	210			
Online Client Searches:	338	11	11	100%
Clients Served:	14,088	Total Users	Active Users	Active Users

### Online Activity:

Displays counts of clients consented, immunizations added, and reporting latency for online activity.

Clients Added:	7			
Immunizations Added:	36	3	4	N/A*
Adult:	0	Child Clients	Adult Clients	Average Entry Latency
Child:	36			

\* Average Entry Latency: In days, the amount of time taken to enter an online immunization.

### Data Exchange Activity:

Displays counts of clients consented, immunizations added, and reporting latency for data exchange activity.

Total Files Submitted:	22			
Clients Submitted:	607	77%	23%	1,540
Clients Accepted:	466	Client Accept Rate	Immunizations Accept Rate	Average Entry Latency
Clients Rejected:	136			
Immunizations Submitted:	3,830			
Immunizations	882			
Immunizations	817			

\*\* Average Entry Latency: In days, the amount of time taken to report immunizations via Data Exchange.

## Timeliness of Data

- **Goal** = Report to ImmTrac2 within 1 day of administration



Texas Department of State Health Services

# TIPS Report - IQIP Coverage Rate

Monthly Reporting Period: 09/2021

## User Activity Summary:

Displays the user activity for the reporting period and compares the total users versus the active users.

Total User Logins:	210			
Online Client Searches:	338	11	11	100%
Clients Served:	14,088	Total Users	Active Users	Active Users

## Online Activity:

Displays counts of clients consented, immunizations added, and reporting latency for online activity.

Clients Added:	7			
Immunizations Added:	36	3	4	N/A*
Adult:	0	Child Clients	Adult Clients	Average Entry Latency
Child:	36			

\* Average Entry Latency: In days, the amount of time taken to enter an online immunization.

## Data Exchange Activity:

Displays counts of clients consented, immunizations added, and reporting latency for data exchange activity.

Total Files Submitted:	22			
Clients Submitted:	607	77%	23%	1,540
Clients Accepted:	466	Client Accept Rate	Immunizations Accept Rate	Average Entry Latency
Clients Rejected:	136			
Immunizations Submitted:	3,830			
Immunizations	882			
Immunizations	817			

\*\* Average Entry Latency: In days, the amount of time taken to report immunizations via Data Exchange.

## IQIP Coverage Rates

- Calculated based on clients served
- Use the [Manage Client Status Criteria](#) feature in ImmTrac2 to remove clients



Texas Department of State Health Services

# Dose Level Accountability





# Dose Level Accountability

Each vaccine dose is accounted for from:

- Ordering
- Arrival at provider facility
- Administration
- Reporting to ImmTrac2

Goal for all Immunization Programs

CDC IIS Data Quality Blueprint will get us there!





TEXAS  
Health and Human  
Services

Texas Department of State  
Health Services

# Thank You!

---

*Texas Immunization Registry*

# Q & A

[ImmTrac2@dshs.texas.gov](mailto:ImmTrac2@dshs.texas.gov)

Access, site registrations or renewals, etc.

[ImmTracMU@dshs.texas.gov](mailto:ImmTracMU@dshs.texas.gov)

Data exchange and promoting interoperability