



TEXAS
Health and Human
Services

**Texas Department of State
Health Services**

Emergency Medical Services and Trauma Registries (EMSTR) Program Updates and Texas Rural Trauma Deaths

Governor's EMS and Trauma Advisory Committee (GETAC)

August 22, 2025

Jia Benno. MPH

Injury Prevention Unit Director

About EMSTR and Presentation Data

- EMSTR collects reportable event data from EMS providers, hospitals, justices of the peace, medical examiners, Long Term Acute Care (LTAC) facilities, and rehabilitation facilities.
- All submitters must report all EMS responses and reportable trauma events to EMSTR under 25 Texas Administration Code, Chapter 103 within 90 days.
- Urban, rural, and frontier data was based on rural/urban criteria from the Texas Demographic Center Texas populations estimate:
 - Urban included large central metro, large fringe metro, medium metro, and small metro areas.
 - Rural included micropolitan (10,000-50,000 people) and noncore (<10,000 people) areas.
 - Frontier was defined as six or less people per square mile.
- For 2013, 2014, and 2017, the data were unavailable due to data standard changes and variable availability.

NOTE: An EMS response is a resulting action from a call for assistance where an EMS provider is dispatched to, responds to, provides care to, or transports a person.

EMSTR – 2024 to Present



TEXAS
Health and Human
Services

Texas Department of State
Health Services

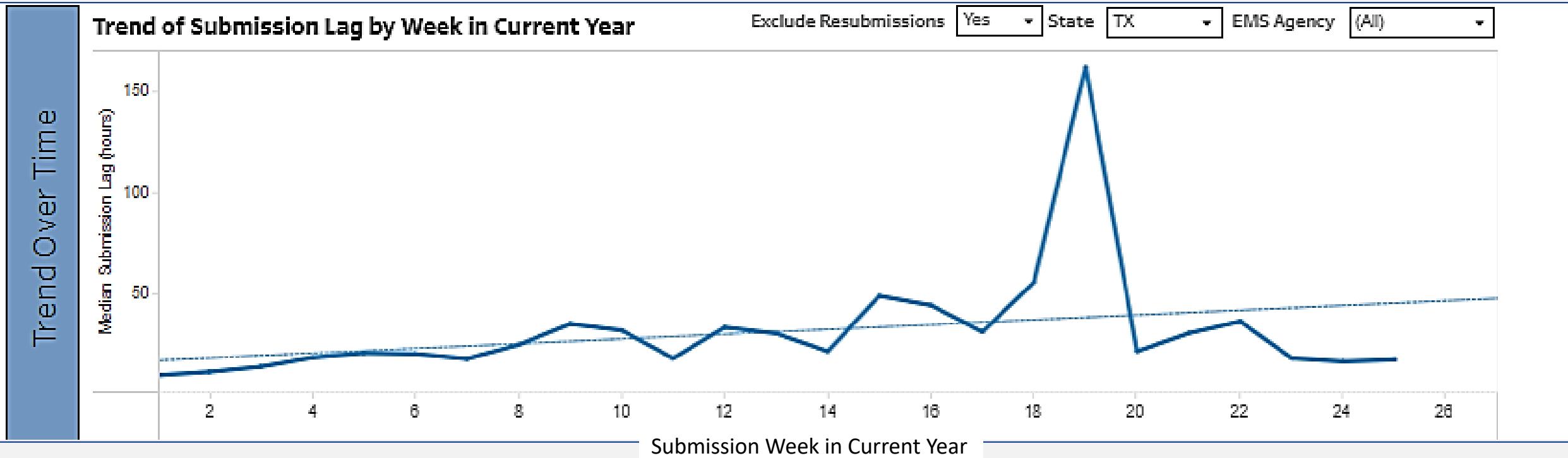
EMSTR Updates*

- 2024 EMS and trauma data closeout:
 - EMS – 4,801,876 records
 - Trauma – 183,759 records
- 2025 EMS and trauma progress:
 - EMS – 3,302,337 records
 - Trauma – 69,175 records

*As of 08/04/2025



Active Surveillance (1 of 2)



Major improvements in timeliness and **completeness**:

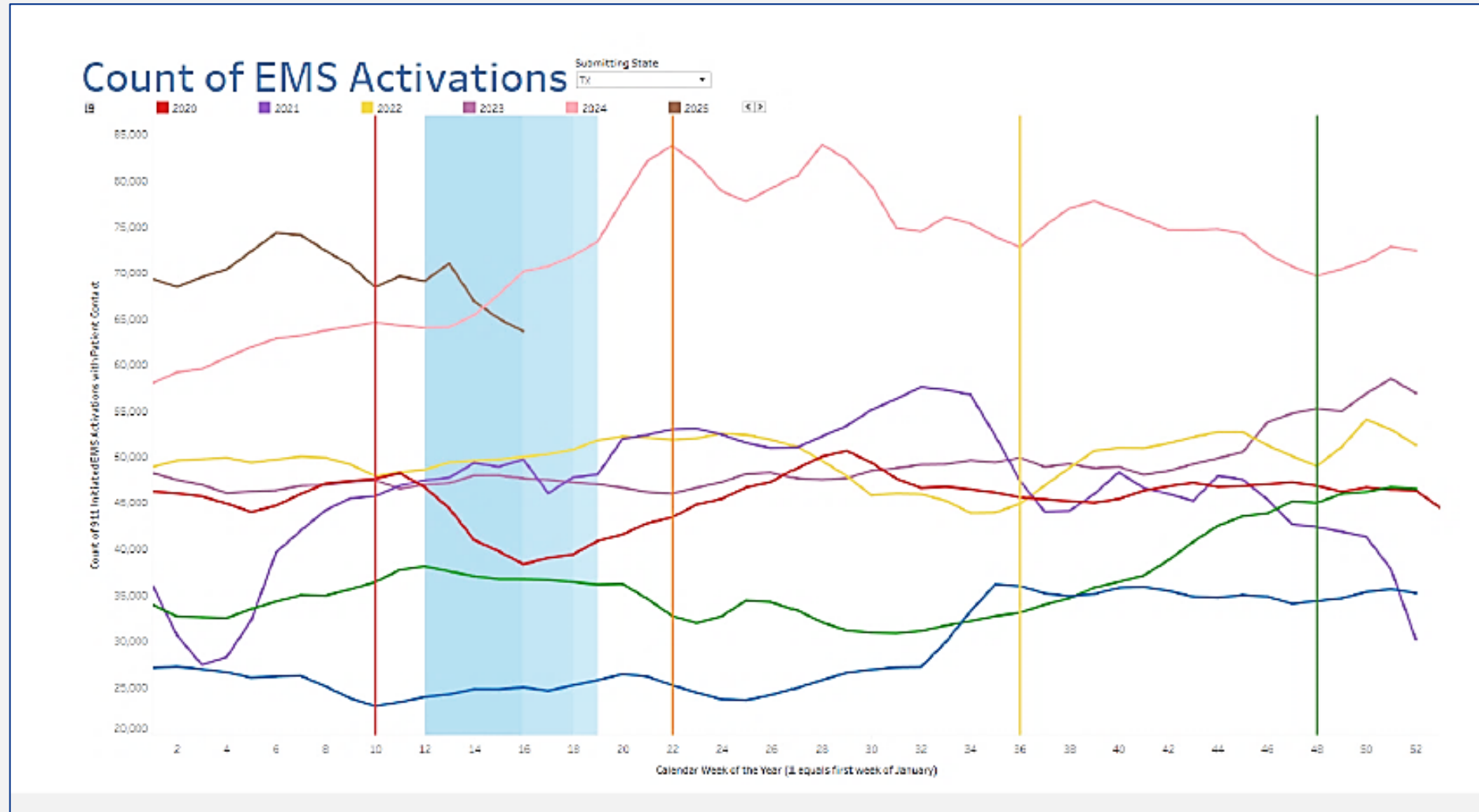
- Approximately 85 Texas EMS providers are sending data in real time.
- EMSTR recognized the top performers in the July/Summer EMS Newsletter.
- The state **submission lag** reduced from a 10-day turn-around time to 37 hours between Calendar Year (CY)2022 and CY2025 (year-to-date).

Data pulled July 2025 from the National EMS Information System (NEMIS).

Active Surveillance (2 of 2)

EMS Activation Tracking Example

- Monthly Communications: From January through July, EMSTR contacted over 200 EMS providers and 50 trauma facilities with missing data.
- 85 EMS facilities and 30 trauma centers have regained full compliance.



Data pulled July 2025 from NEMSIS.

Data Quality Webinar Series

Webinars are held every 6-8 weeks:

- EMSTR prepares trainings that focus on areas of performance improvement.
- Attendance varies between 100-150 facilities.

Hospital

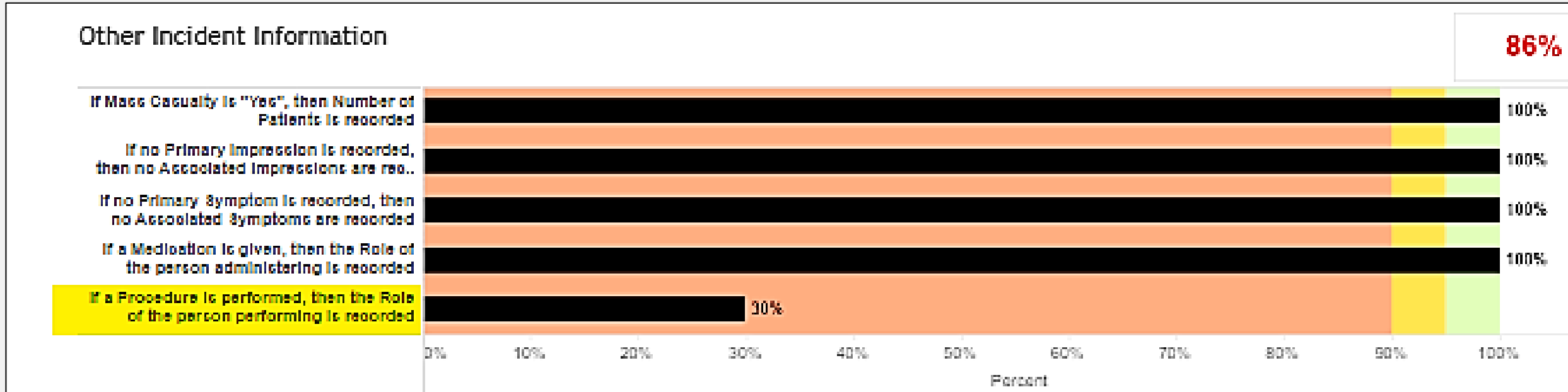
- Universal Unique Identifier (UUID), Texas Wristband, and prehospital information.
- Abbreviated Injury Score (AIS) and procedure coding improvements.

EMS

- Stroke Severity Scoring and Pre-Arrival Alert documentation.
- Blood product documentation and improving clinical times reliability.

Drilling Down on Quality Issues (1 of 4)

Example of How NEMESIS Can Help Identify Quality Issues



EMSTR:

- Can provide individual agency consultation.
- Is collaborating with third-party vendors.
- Identified and counseled approximately 120 providers with quality issues in the areas shown.

Data pulled July 2025 from NEMESIS.

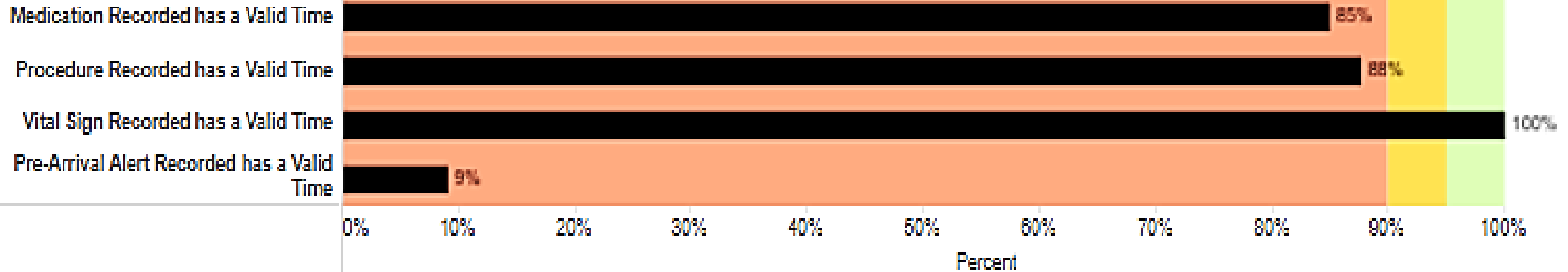
Drilling Down on Quality Issues (2 of 4)

Example of How NEMSIS Can Help Identify Quality Issues

Clinical Times Recorded

When EMS providers treat a patient, treatment times should be reported using valid values. The following chart shows the percentage of correctly completed patient care reports.

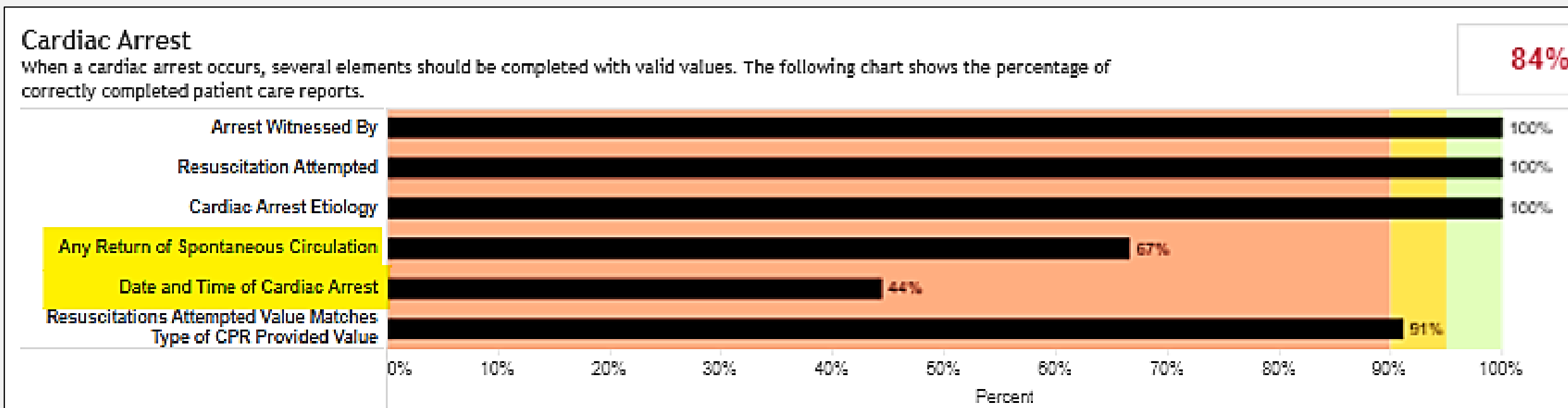
70%



Data pulled July 2025 from NEMSIS.

Drilling Down on Quality Issues (3 of 4)

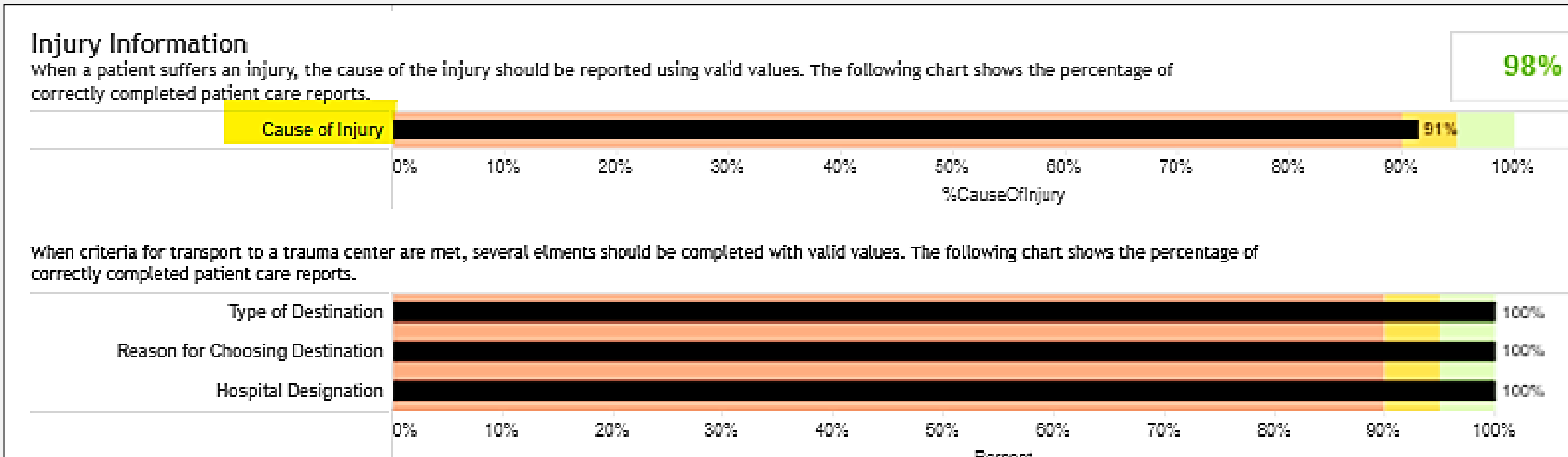
Example of How NEMESIS Can Help Identify Quality Issues



Data pulled July 2025 from NEMESIS.

Drilling Down on Quality Issues (4 of 4)

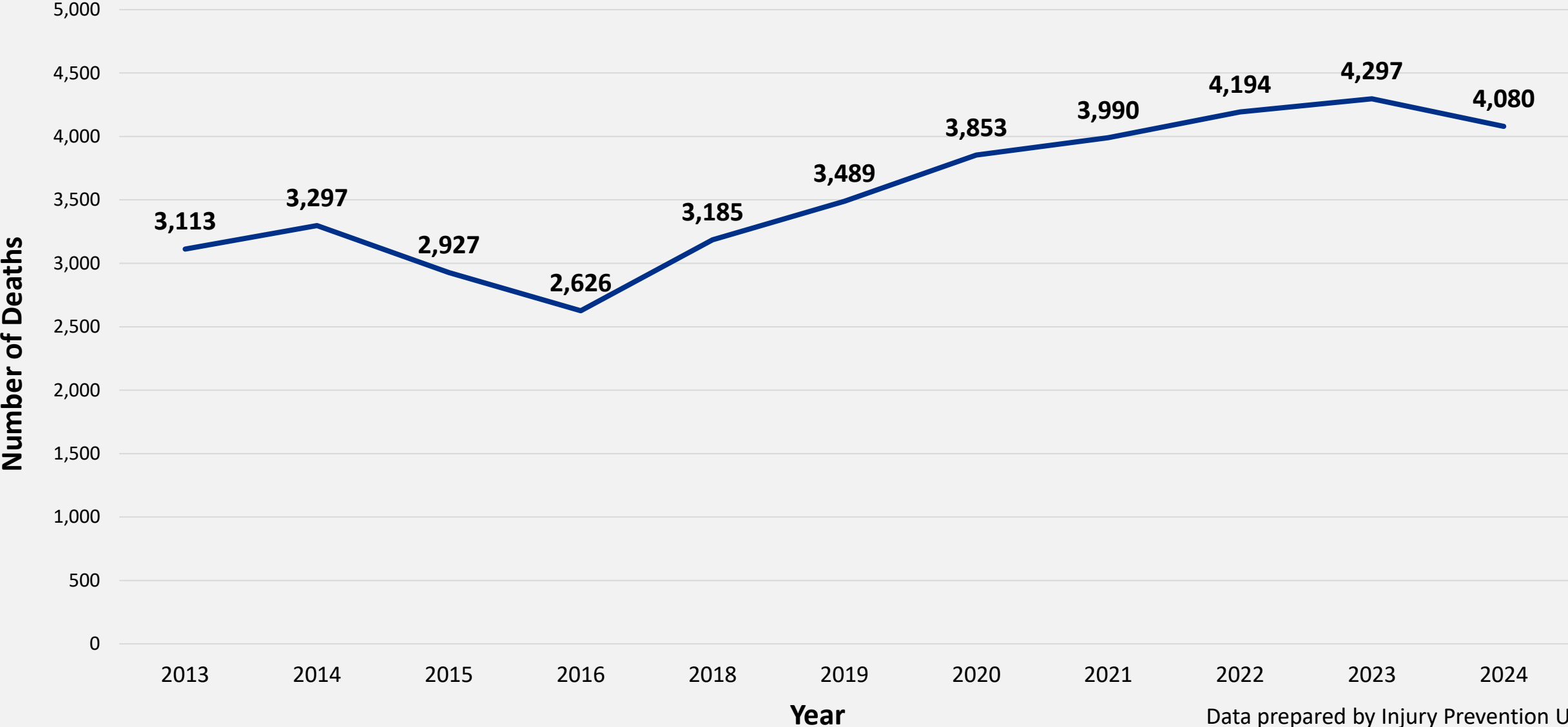
Example of How NEMESIS Can Help Identify Quality Issues



Texas Transfer Deaths Over Time 2013-2024

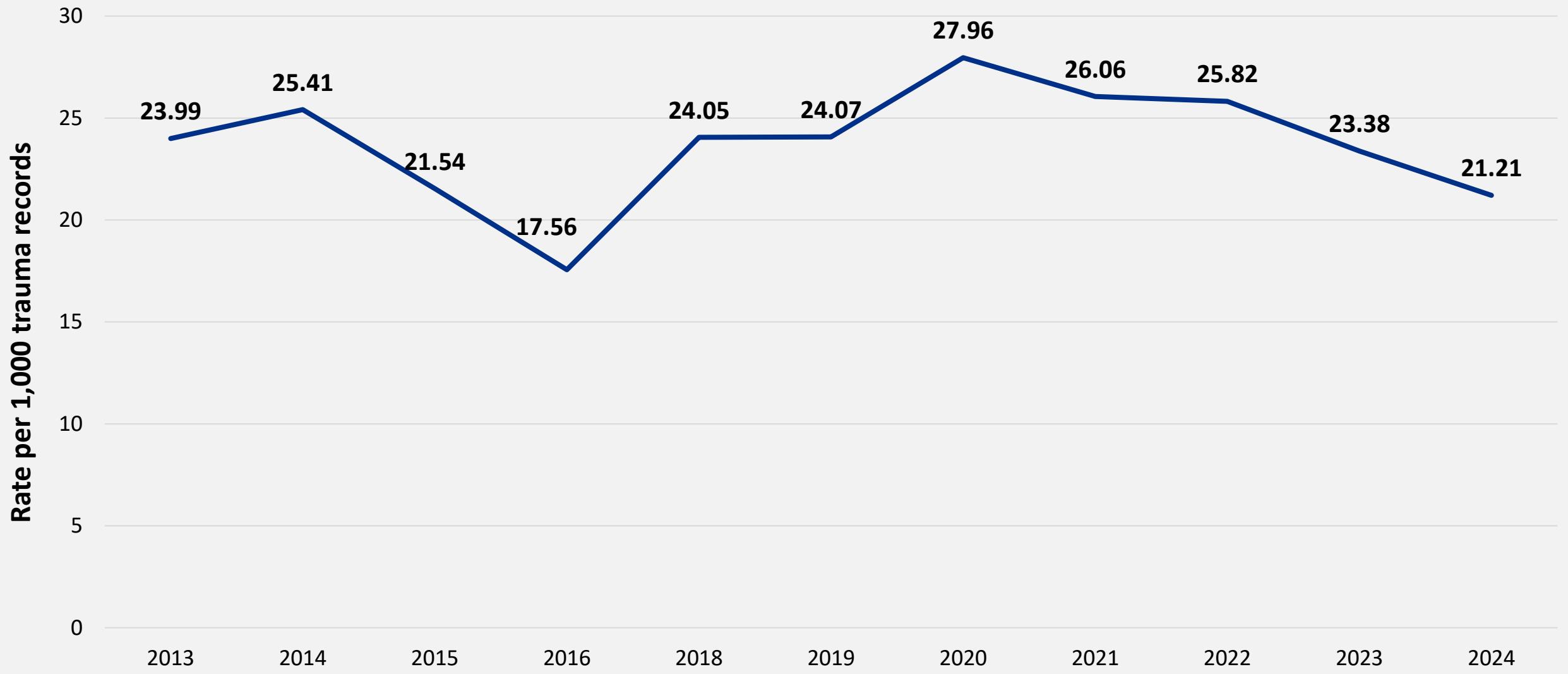


Total Trauma Deaths, Texas, 2013-2024



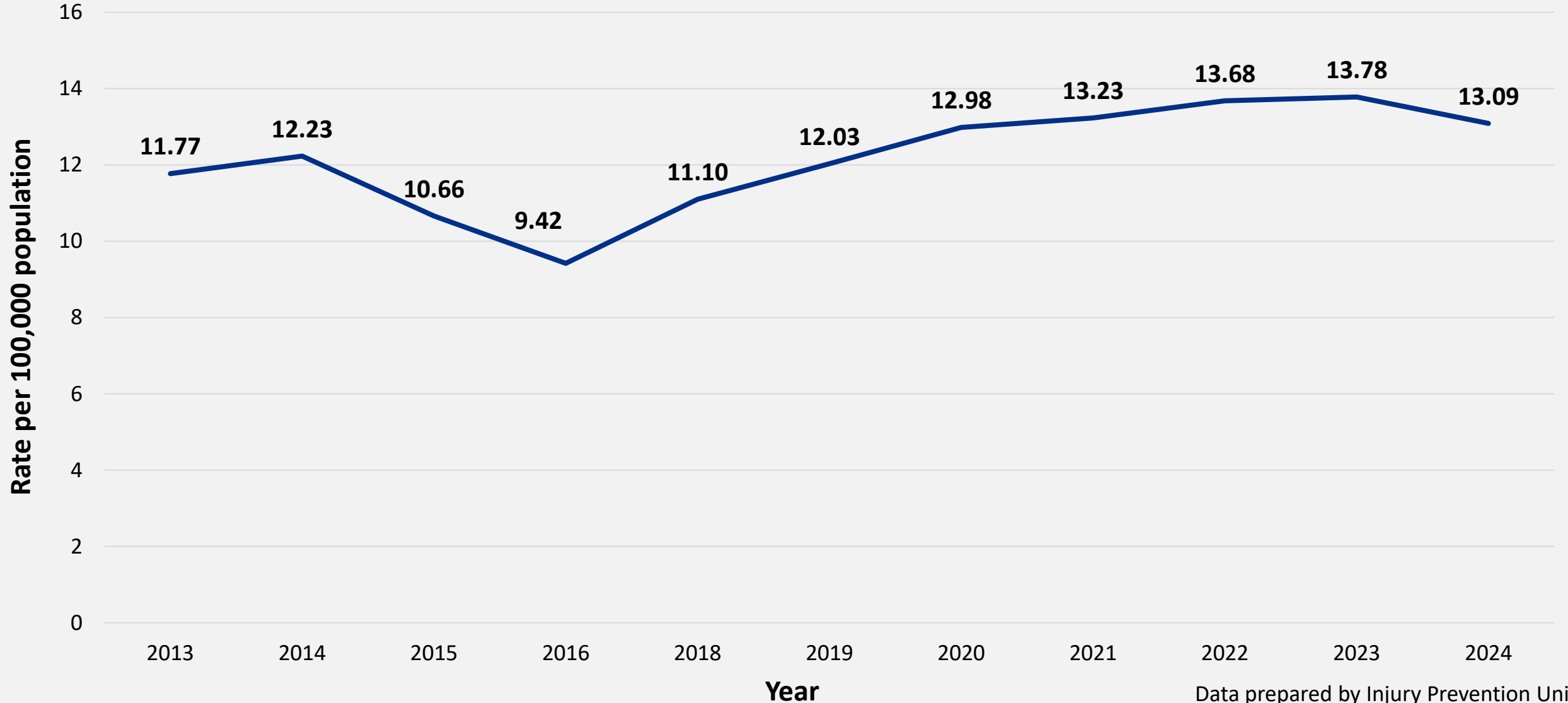
Data prepared by Injury Prevention Unit
Epidemiologists using EMSTR data, April 2025.

Trauma Death Rate by Records, Texas, 2013-2024



Data prepared by Injury Prevention Unit
Epidemiologists using EMSTR data, April 2025.

Trauma Death Rate by Population, Texas, 2013-2024



Data prepared by Injury Prevention Unit
Epidemiologists using EMSTR data, April 2025.

Trauma Deaths By Area Characterization, Texas, 2013-2024

Year	Total	Urban	Rural	Frontier
2013	3,113	2,793	154	8
2014	3,297	2,926	205	20
2015	2,927	2,531	248	22
2016	2,626	2,293	189	25
2018	3,185	2,870	117	8
2019	3,489	3,111	177	20
2020	3,853	3,474	193	10
2021	3,990	3,536	222	7
2022	4,194	3,802	172	17
2023	4,297	3,954	186	13
2024	4,080	3,767	149	19

Note: The remaining deaths were missing area characterization.

Data prepared by Injury Prevention Unit Epidemiologists using EMSTR data, April 2025.

Rural Trauma Deaths 2019-2024



TEXAS
Health and Human
Services

Texas Department of State
Health Services

Rural Trauma Deaths by Age Group

Year	Age <15	Age 15-64	Age 65+	Missing
2019	12	107	58	0
2020	15	113	65	0
2021	21	124	77	0
2022	13	102	57	0
2023	9	113	58	6
2024	11	67	51	20

Data prepared by Injury Prevention Unit
Epidemiologists using EMSTR data, April 2025.

Rural Trauma Deaths – Signs of Life

Year	Dead on Arrival	Arrived with Signs of Life	Signs of Life Missing
2019	142 (80.2%)	34 (19.2%)	*
2020	149 (77.2%)	44 (22.8%)	0
2021	182 (82.0%)	39 (17.6%)	*
2022	134 (77.9%)	38 (22.1%)	0
2023	156 (83.9%)	30 (16.1%)	0
2024	124 (83.2%)	25 (16.8%)	0

*Number suppressed <5.

Data prepared by Injury Prevention Unit
Epidemiologists using EMSTR data, April 2025.

Patient Arrived with Signs of Life by Age

Year	Age <15	Age 15-64	Age 65+
2019	*	8 (7.5%)	25 (43.1%)
2020	0 (0%)	8 (7.1%)	36 (55.4%)
2021	0 (0%)	*	36 (46.8%)
2022	0 (0%)	6 (5.9%)	32 (5.6%)
2023	0 (0%)	*	26 (44.8%)
2024	0 (0%)	*	19 (37.3%)

*Number suppressed <5.

Data prepared by Injury Prevention Unit
Epidemiologists using EMSTR data, April 2025.

Injury Severity Score

The Injury Severity Score (ISS) is an anatomical scoring system providing an overall score for patients with multiple injuries. The ISS scoring categories are:

- ISS 1-8 = mild;
- ISS 9-15 = moderate;
- ISS 16-24 = severe; or
- ISS \geq 25 = profound.



ISS - Limited to Signs of Life and 65+

	2019	2020	2021	2022	2023	2024
ISS 0	0	*	5	5	*	*
ISS 1-8	5	6	9	8	7	*
ISS 9-15	10	13	16	16	13	11
ISS 16-24	*	*	*	*	*	*
ISS 25+	*	6	5	*	*	*
Missing	6	7	0	0	0	0
Total	24	36	36	32	26	19

*Number suppressed <5.

Data prepared by Injury Prevention Unit
Epidemiologists using EMSTR data, April 2025.

Thank you!

EMSTR Program Updates and Texas Rural Trauma Deaths

Injury.web@dshs.texas.gov