

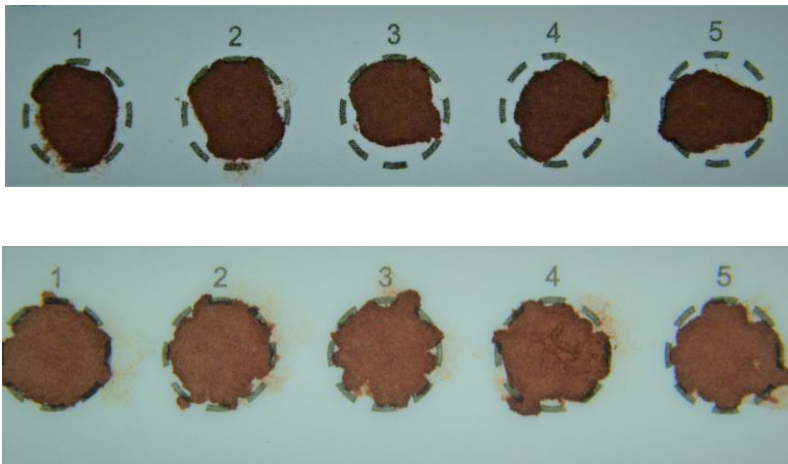
# SPOTfocus

## Newborn Screening Quality Improvement Hints

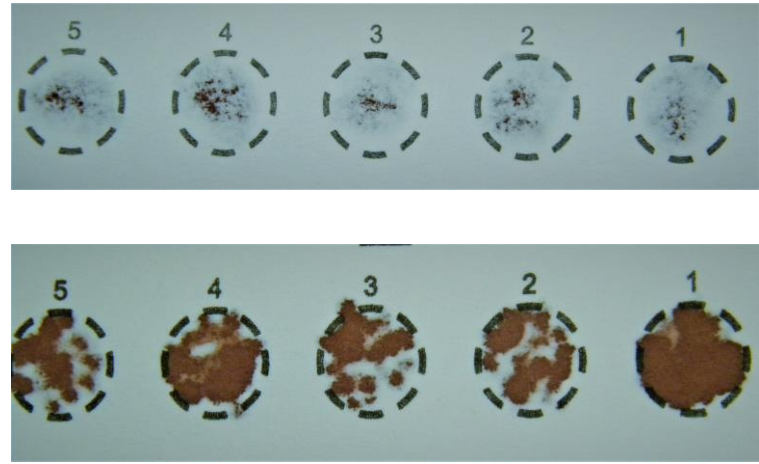
*One reason for unsatisfactory newborn screening specimens is*

## INCOMPLETE SATURATION

**Front**



**Back**



*\*These examples show both sides of the same filter paper.*

### TIPS TO ENSURE A COMPLETELY SATURATED SPECIMEN

- Use the proper sized heel lancet (<2.0 mm length).\*
- Lightly touch the filter paper with a large drop of blood while watching it **soak through completely** from the opposite side.
- Ensure that each circle is completely filled, one at a time.
- Avoid reapplying blood to filter paper circle. This often causes the blood to cake or clot.
- Store Newborn Screening kits and collected specimens away from sunlight.

*\*Guideline has changed per CLSI NBS01-ED7:2021 Dried Blood Spot Specimen Collection for Newborn Screening, 7th Edition*

In 2020, over 2,100 newborn screening specimens were rejected because the blood did not properly soak through the filter paper. All of these specimens required a recollection and caused critical delays to testing.



## Why is a specimen with incomplete saturation rejected?

The filter paper is designed to hold a specific amount of blood. Incomplete saturation will have too little blood for proper testing. An insufficient amount of blood may cause test results to be inaccurate; therefore, these specimens will be unsatisfactory for testing.

## Other Helpful Resources



**General newborn screening specimen collection questions:**

[dshs.texas.gov/lab/nbs\\_collect\\_reqs.shtm](https://dshs.texas.gov/lab/nbs_collect_reqs.shtm)



**Newborn screening collection video:**

<https://www.youtube.com/watch?v=vxshWngJ114>



**Healthcare provider resources:**

[dshs.texas.gov/lab/nbsHCRes.shtm](https://dshs.texas.gov/lab/nbsHCRes.shtm)



**DSHS Newborn Screening Laboratory Contact:**

Email: [NewbornScreeningLab@dshs.state.tx.us](mailto:NewbornScreeningLab@dshs.state.tx.us)

or call **1-888-963-7111 ext. 7333**



**Monthly newborn screening facility report cards:**

Sign up for Texas Newborn Screening Web Application (Neometrics • 

report card. Find the sign-up forms here:

[dshs.texas.gov/lab/nbsrpt.htm](https://dshs.texas.gov/lab/nbsrpt.htm)

[nbsrpt.htm](https://dshs.texas.gov/lab/nbsrpt.htm)

