

Weekly Flu Surveillance Report
Public Health Region 9/10
Week 46- November 14th- November 20th



Texas Department of State Health Services

Disclaimer

Most cases of influenza are not reportable in the state of Texas, thus the data in this report was collected from hospitals, clinics, and schools throughout the region who have agreed to voluntarily submit data.

Definitions

ILI: Influenza-Like Illness. This is an illness that resembles the flu, but has not been confirmed. **Rapid:** These tests are typically done in-house to quickly test for influenza. **PCR:** These tests are generally more precise than rapid tests and are performed at the DSHS state lab and many commercial labs to confirm a case of influenza.

Geographic Spread of Influenza in the Region

No Activity	Sporadic	Local	Regional	Widespread
-------------	----------	-------	-----------------	------------

Geographic spread is determined using the CDC's guidelines for flu activity: <http://www.cdc.gov/flu/weekly/overview.htm>.

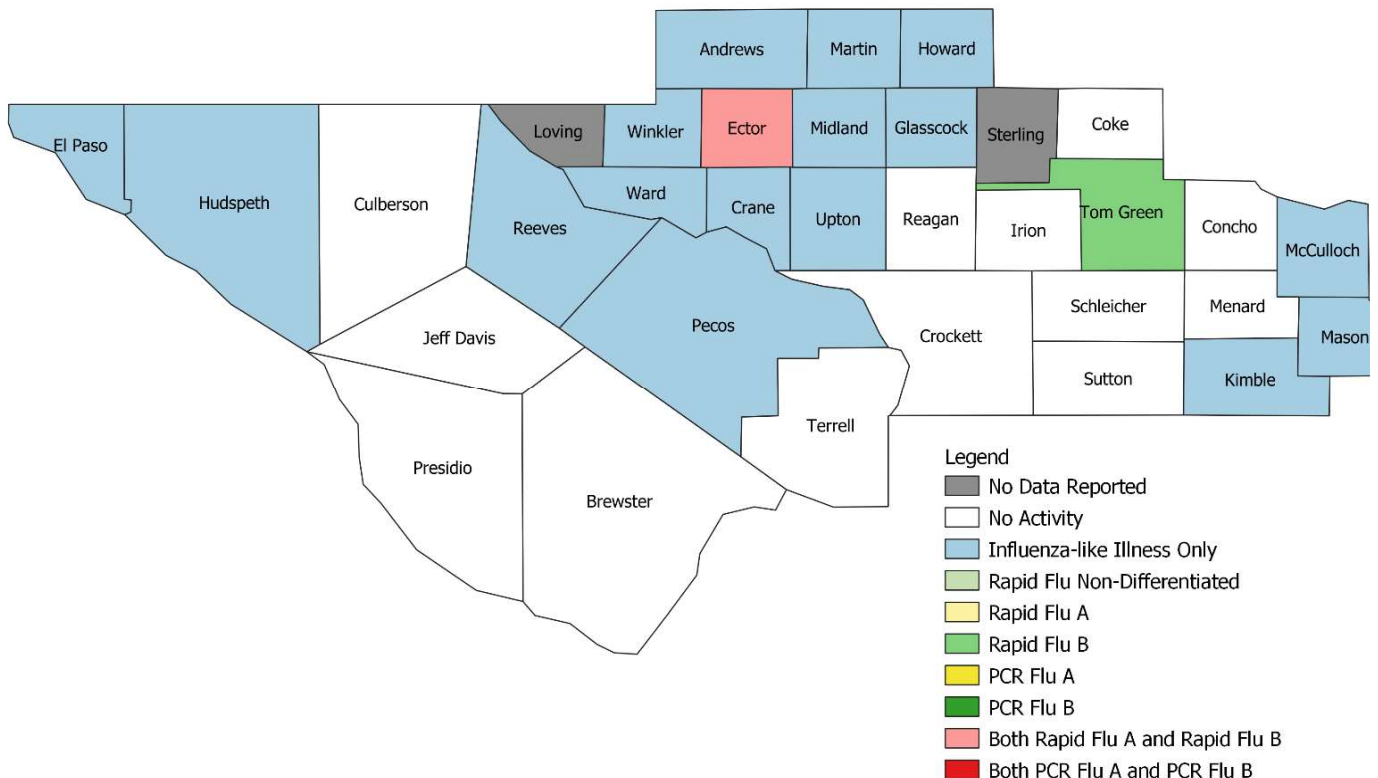
Summary Data

Condition	Week 46	Week 45	Week 44
Number of Counties Reporting (36 total)	→ 34	34	34
Number of Counties Reporting ILI	↑ 19	18	17
Number of Counties Reporting High Levels of ILI*	↓ 7	8	3
Number of Counties Reporting Flu A	↓ 1	3	4
Number of Counties Reporting Flu B	↓ 3	4	5
Number of Counties Reporting Flu A & Flu B	↓ 1	2	3

The arrows represent changes from the previous week. A sideways arrow means there was no change in that condition.

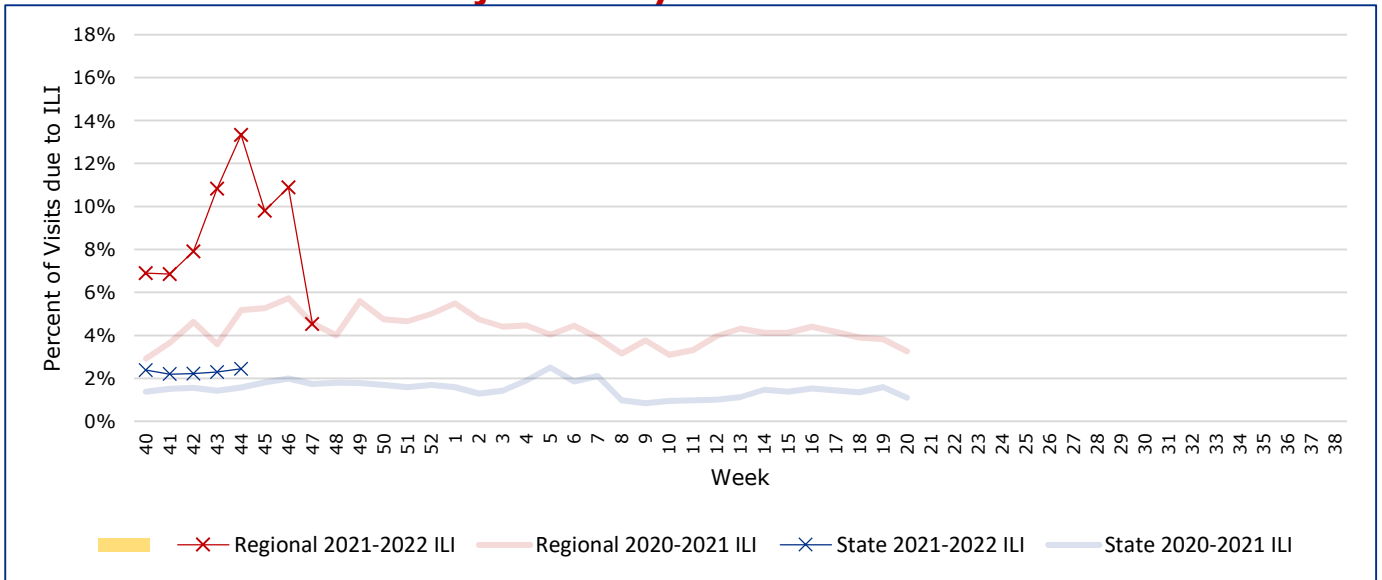
*Counties with total percent of visits due to ILI above 4.0% for the week are considered to have high/abnormal levels.

Map of Regional Flu Activity



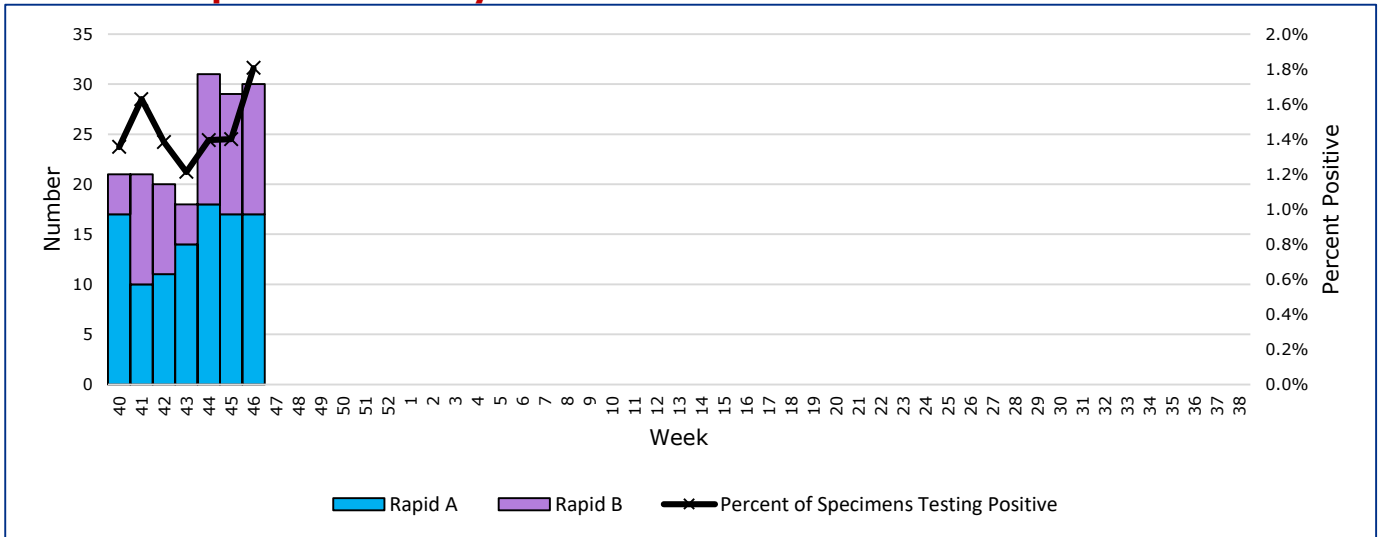
The map above depicts the previous week's reports of flu or influenza-like illness activity in each county. The legend on the bottom right of the map describes the meaning of each color.

Influenza-Like Illness Projections by Week



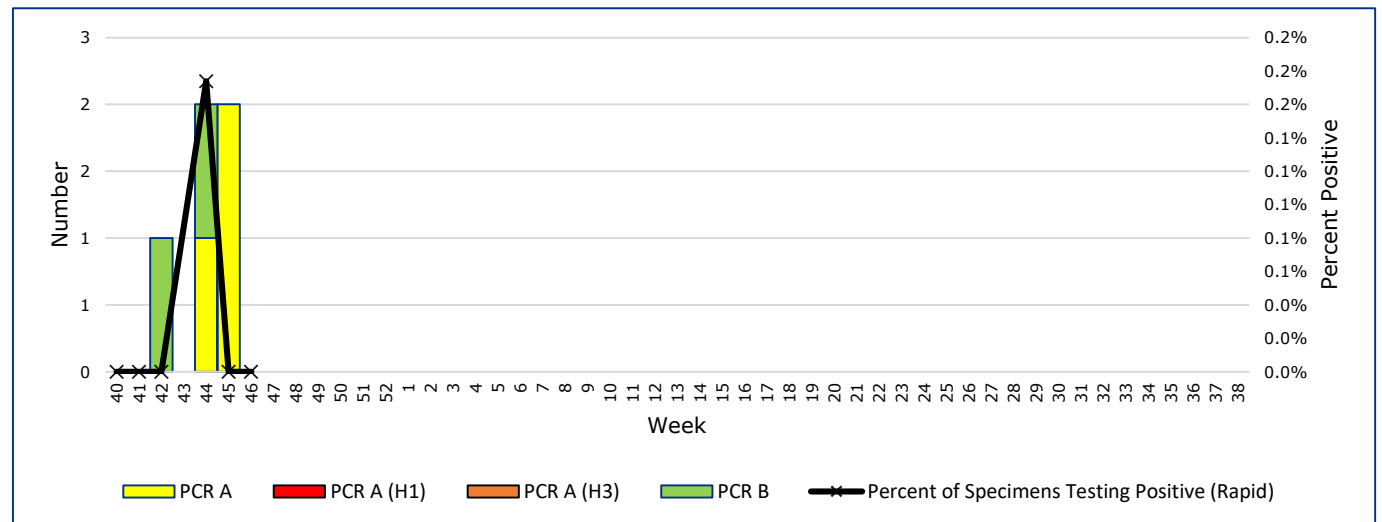
This chart documents the percentage of patient visits that were due to ILI at hospitals and clinics around the region. It compares our region's data with the state's data and also compares to last flu season.

Positive Rapid Flu Tests by Week



This chart documents the number of rapid tests that have come back positive for flu A and flu B each week throughout the region.

Positive PCR Flu Tests by Week



This chart documents the number of PCR tests that have come back positive for flu A and flu B each week throughout the region.

Flu Data by County

County	Week 46				Week 45				Week 44			
	Patient Visits	% with ILI	Flu A	Flu B	Patient Visits	% with ILI	Flu A	Flu B	Patient Visits	% with ILI	Flu A	Flu B
Andrews	499	0%	0	0	491	28%	0	0	903	30%	1	0
Brewster	74	0%	0	0	80	3%	0	0	101	3%	0	0
Coke	6	0%	0	0	6	0%	0	2	1	0%	0	0
Concho	21	0%	0	0	18	0%	0	0	19	0%	0	0
Crane	27	4%	0	0	29	3%	0	0	22	5%	0	0
Crockett	6	0%	0	0	7	0%	0	0	0		0	0
Culberson	7	0%	0	0	12	8%	0	0	8	0%	0	0
Ector	4857	18%	17	12	4662	17%	13	1	4396	15%	16	1
El Paso	9004	4%	0	0	9084	4%	5	8	7957	3%	2	10
Glasscock	7	14%	0	0	7	0%	0	0	4	0%	0	0
Howard	393	2%	0	0	377	2%	0	0	766	4%	0	0
Hudspeth	25	4%	0	0	24	8%	0	0	30	3%	0	0
Irion	1	0%	0	0	0		0	0	66	0%	0	0
Jeff Davis	10	0%	0	0	23	0%	0	0	12	0%	0	0
Kimble	129	1%	0	0	214	0%	0	0	181	0%	0	0
Loving	0		0	0	1	0%	0	0	1	0%	0	0
McCulloch	98	4%	0	0	73	5%	0	0	78	3%	0	0
Martin	491	16%	0	0	44	5%	0	0	481	3%	0	0
Mason	34	6%	0	0	17	0%	0	0	20	0%	0	0
Menard	9	0%	0	0	18	0%	0	0	10	0%	0	0
Midland	2552	28%	0	0	2628	16%	1	0	2747	14%	0	0
Pecos	129	6%	0	0	127	6%	0	0	626	43%	0	0
Presidio	46	0%	0	0	154	12%	0	0	114	0%	0	0
Reagan	15	0%	0	0	22	9%	0	0	20	0%	0	0
Reeves	182	6%	0	0	174	7%	0	0	685	41%	0	0
Schleicher	2	0%	0	0	11	64%	0	0	19	0%	0	0
Sterling	0		0	0	0		0	0	1	0%	0	0
Sutton	18	0%	0	0	17	0%	0	0	15	0%	0	1
Terrell	4	0%	0	0	8	0%	0	0	6	0%	0	0
Tom Green	1383	1%	0	1	1326	1%	0	1	1155	1%	0	1
Upton	142	26%	0	0	135	33%	0	0	145	28%	0	1
Ward	114	4%	0	0	139	1%	0	0	603	45%	0	0
Winkler	411	18%	0	0	300	22%	0	0	841	40%	0	0
Total	20966	10.6%	17	13	20506	9.5%	19	12	22287	12.7%	19	14

Flu-Associated Pediatric Deaths & Outbreaks

No flu-associated pediatric deaths have been reported in PHR 9/10 this flu season. No flu outbreaks have been reported for Week 46.