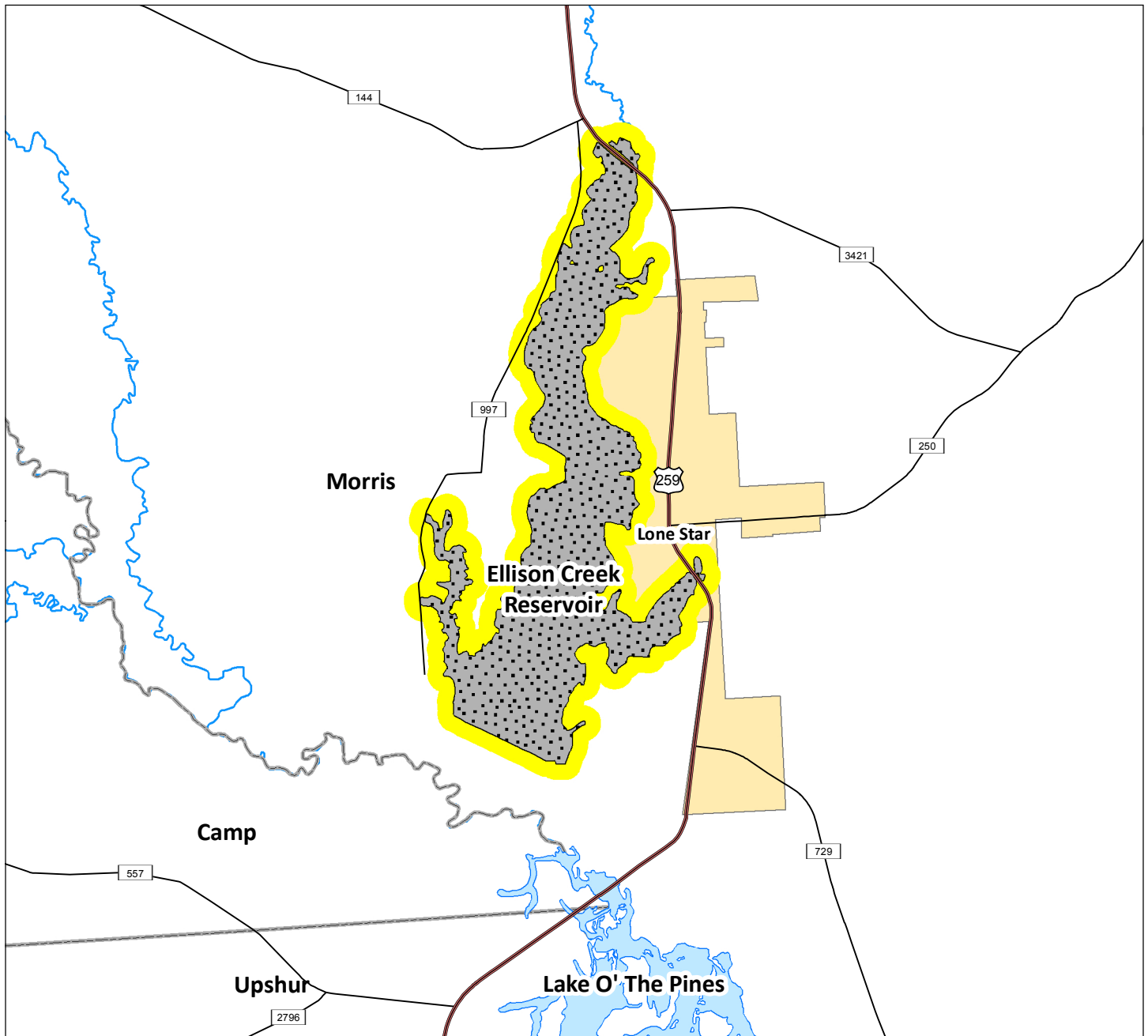


Ellison Creek Reservoir "Lone Star Lake"

Morris County

ADV-58 Issued September 29, 2016, Rescinding ADV-29 Issued December 28, 2005



Contaminants of Concern:

Dioxins and PCBs

Species Affected	Women of Childbearing Age and Children < 12 ¹	Women Past Childbearing Age and Males 12 and Older ²
Channel catfish	DO NOT EAT	1 meal/month
Common carp	DO NOT EAT	DO NOT EAT
Flathead catfish	DO NOT EAT	1 meal/month
Hybrid striped bass	DO NOT EAT	DO NOT EAT
Largemouth bass	1 meal/month	2 meals/month
Spotted gar	DO NOT EAT	1 meal/month
Sunfish Spp. (Bluegill, Green, and Redbreast)	DO NOT EAT	1 meal/month
White bass	DO NOT EAT	2 meals/month



¹ A meal is four ounces of fish.

² A meal is eight ounces of fish.