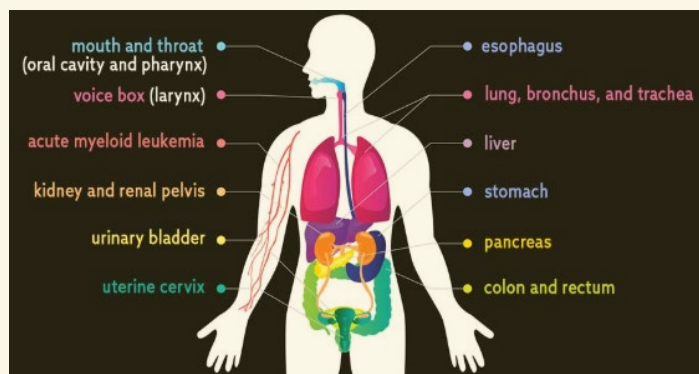


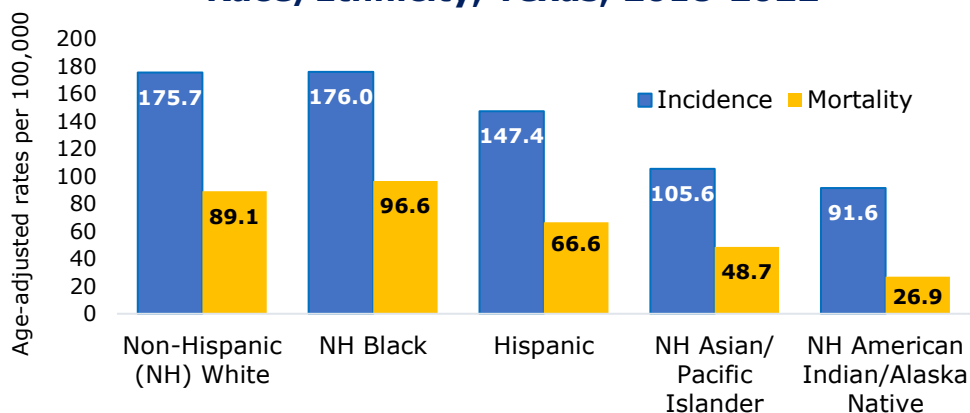
# Tobacco-Associated Cancers in Texas



**Tobacco use can cause cancer almost anywhere in the body.** It has been shown to increase the risk of developing at least **12 different types of cancers**. The cancer sites affected are shown in the diagram on the right.<sup>1</sup> Tobacco products include cigarettes, electronic cigarettes, cigars, pipes, hookah, and smokeless tobacco.

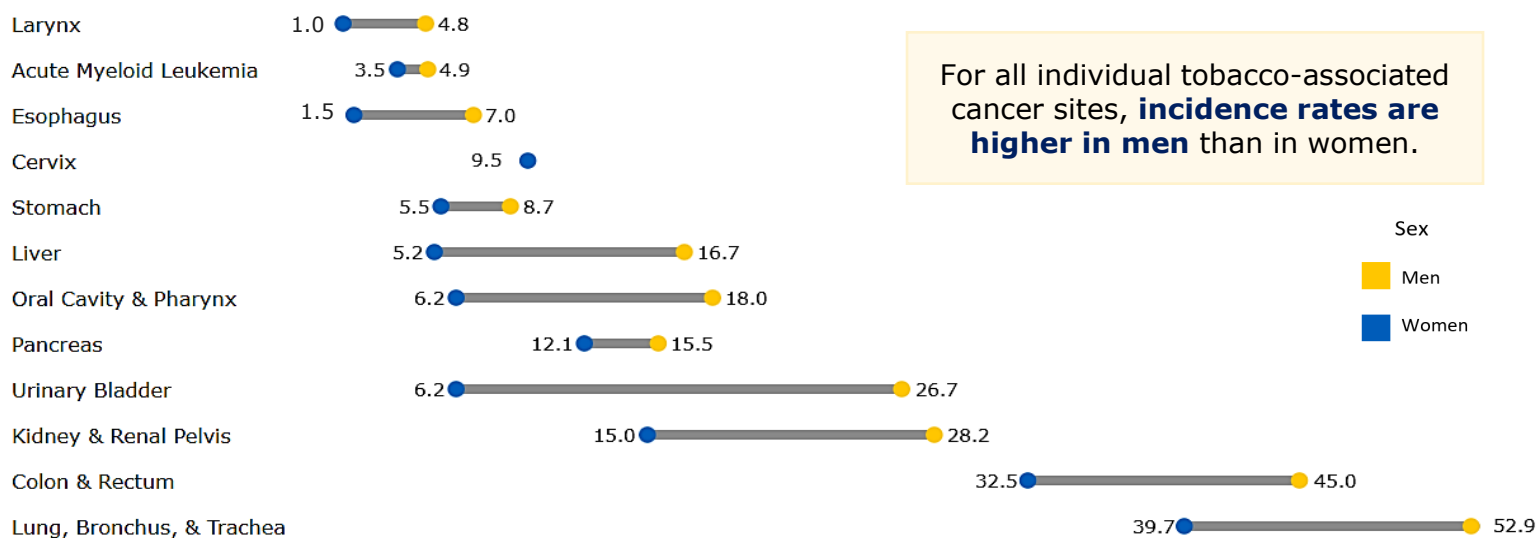


## Incidence and Mortality Rates for Tobacco-Associated Cancers, by Race/Ethnicity, Texas, 2018-2022



- Cigarette smoking accounts for about **19% of new cancer cases** in the U.S.
- Approximately **30% of cancer deaths** are attributable to cigarette smoking in the U.S.
- An estimated 11.3% of Texas adults are reported to be current smokers.
- In Texas, tobacco use caused an estimated **51,321 cancer cases in 2022**.

## Incidence Rates\* for Tobacco-Associated Cancers in Texas, by Site and Sex, 2018-2022



For all individual tobacco-associated cancer sites, **incidence rates are higher in men** than in women.

\*Rates are age-adjusted and per 100,000 population



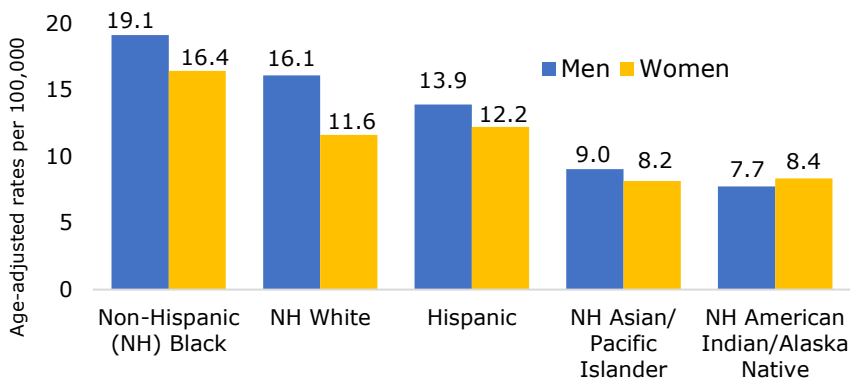
**TEXAS**  
Health and Human  
Services

Texas Department of State  
Health Services

[dshs.texas.gov](https://dshs.texas.gov)

# Tobacco-Associated Cancers in Texas: Pancreatic Cancer

## Pancreatic Cancer Incidence Rates in Texas, by Race/Ethnicity and Sex, 2018-2022

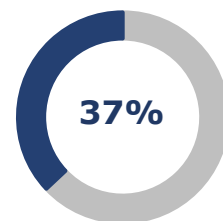


Tobacco use is an important modifiable risk factor for pancreatic cancer. Smoking doubles a person's risk for pancreatic cancer. An estimated **25% of pancreatic cancers are thought to be caused by cigarette smoking**. Smokeless tobacco products and cigar use also increase the risk of pancreatic cancer.

## Five-Year Relative Survival Percentage for Pancreatic Cancer, by Stage at Diagnosis\*

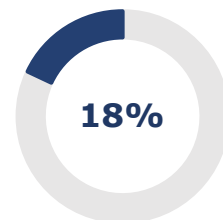
### Localized Stage

Localized cancer is limited to the place where it started, with no sign it has spread. The five-year relative survival rate for Texans diagnosed with localized pancreatic cancer is **37%**. Less than 18% of pancreatic cancers are diagnosed at this stage.



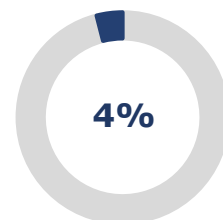
### Regional Stage

Regional cancer has spread beyond the original (primary) tumor to nearby tissues, organs, or lymph nodes. The five-year relative survival rate for Texans diagnosed with pancreatic cancer at this stage is **18%**. About 23% of pancreatic cancers are diagnosed at the regional stage.



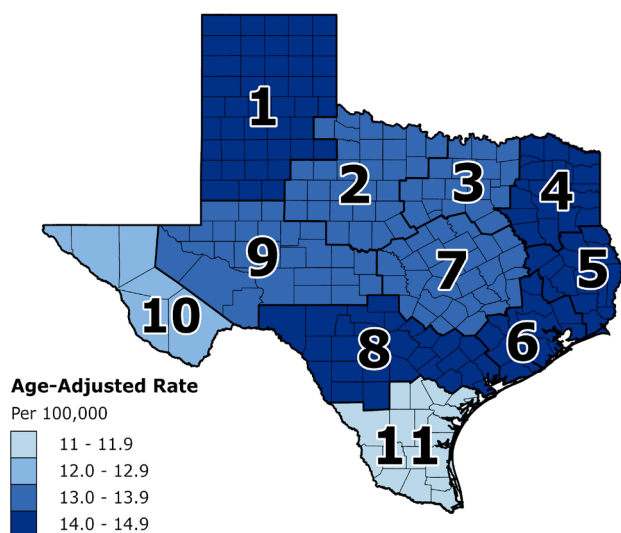
### Distant Stage

Distant cancer (distant metastasis) has spread to distant organs or lymph nodes. The five-year relative survival rate for Texans diagnosed with pancreatic cancer diagnosed at this stage is only **4%**. Nearly 46% of pancreatic cancers are diagnosed at the distant stage.



\*Based on individuals diagnosed with cancer between 2015-2021 and followed through December 31, 2022. For 13% of pancreatic cancers, there is not enough information to determine a stage at diagnosis.

## Pancreatic Cancer Incidence Rates by Texas



The map above shows a breakdown of age-adjusted pancreatic cancer incidence rates (per 100,000) in Texas by PHR. The overall pancreatic cancer incidence rate in Texas is **13.7 cases per 100,000 people**. Rates are highest in PHR 5 (14.7 cases per 100,000).



**Quitting at any age** will help you avoid getting cancer.

Call 877-937-7848 (877-YES-QUIT) or visit [yesquit.org](https://www.yesquit.org) to get started on your quit journey today.

### References:

- Centers for Disease Control and Prevention (CDC). Tobacco and Cancer. Accessed July 2025. Available at [cdc.gov/cancer/tobacco/index.htm](https://www.cdc.gov/cancer/tobacco/index.htm)
- American Cancer Society (Cancer Facts & Figures 2024). Accessed July 2025. Available at [cancer.org/research/cancer-facts-statistics/all-cancer-facts-figures/2024-cancer-facts-figures.html](https://www.cancer.org/research/cancer-facts-statistics/all-cancer-facts-figures/2024-cancer-facts-figures.html)
- Islami et al. CA Cancer J Clin. 2024;74(5):405-432.
- National Cancer Institute (NCI). Cancer Staging. Accessed July 2025. Available at [cancer.gov/about-cancer/diagnosis-staging/staging](https://www.cancer.gov/about-cancer/diagnosis-staging/staging)

### Data Sources:

- Texas Cancer Registry SEER\*Stat Database, 1995-2022 Incidence, 2024 Submission, cutoff 9/27/2024, created Feb. 2025.
- Texas Cancer Registry SEER\*Stat Database, Provisional 1990-2022 Mortality, created March 2025.

Prepared by Texas Cancer Registry, Cancer Epidemiology and Surveillance Branch, Texas Department of State Health Services, July 2025.

If you have any questions, contact us by emailing [cancerdata@dshs.texas.gov](mailto:cancerdata@dshs.texas.gov). For more information on cancer in Texas, visit the Texas Cancer Registry online at [dshs.texas.gov/tcr](https://dshs.texas.gov/tcr).