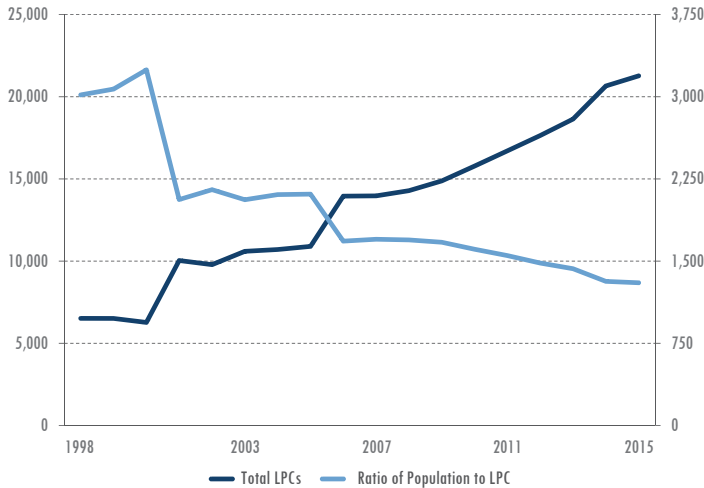




Licensed Professional Counselor Growth Trends



In 2015, there were 21,271 actively licensed professional counselors (LPC) providing direct patient care in Texas.

- This number represented a 34.8% increase since 2010 and a 95.2% increase since 2005.
- Relative to population growth, the size of the LPC workforce has improved by 38.3% over the past ten years.

Despite these improvements, Texas still had fewer licensed professional counselors than the national average.

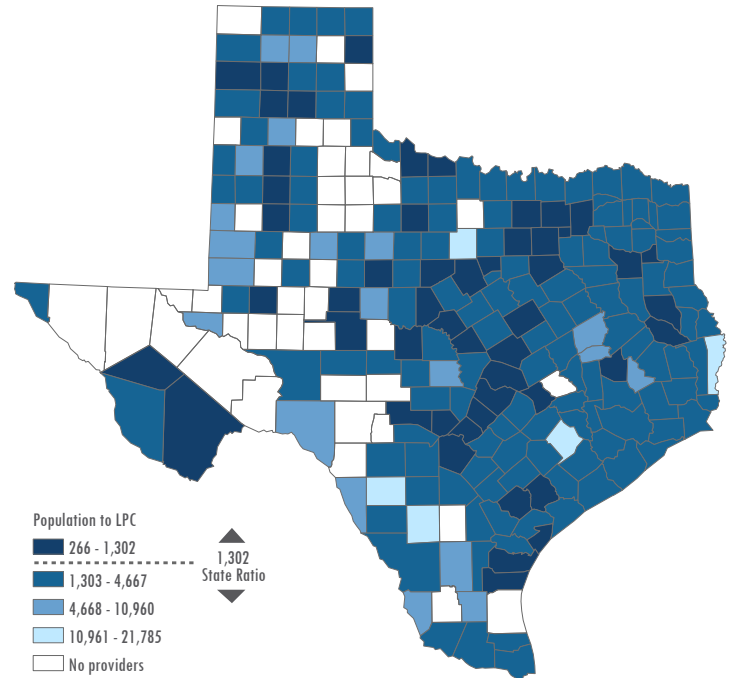
Ratio of Texas Population to LPC, by Geographic Designation

Licensed professional counselors were not evenly distributed throughout the state.

- There was a 53.5% difference between the number of LPCs in metropolitan and non-metropolitan areas even after controlling for population differences.
- Between border and non-border areas the percent difference was 68.3%.

Geographic Designation	Ratio of population to LPCs
Metropolitan	1,239
Non-metropolitan	2,145
Border	2,511
Non-border	1,233
Texas	1,302

Ratio of Texas Population to LPC, by County



Age Distribution of LPCs

Age Group	Total
≤25	107
26-30	1,857
31-35	2,817
36-40	2,495
41-45	2,523
46-50	2,194
51-55	1,983
56-60	2,119
61-65	2,231
>65	2,945
Total	21,271

13.8% of the LPC workforce are currently greater than 65 years of age and, within ten years, 35.4% of the Texas LPC workforce will be at or past retirement age.

- 10.5% of active LPCs were 61-65 years of age.
- 34.2% of LPCs were aged 40 years or younger.

